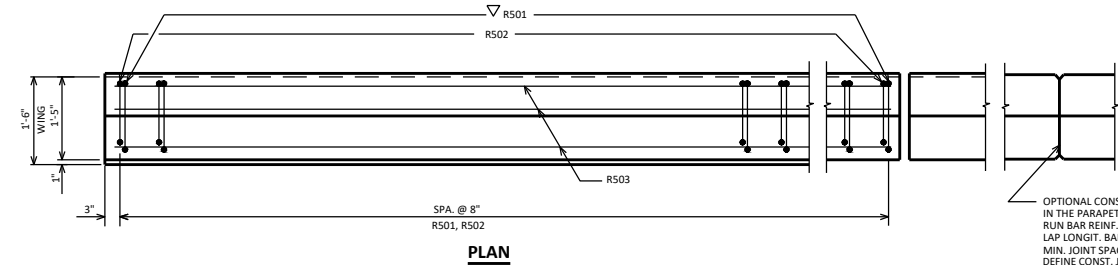
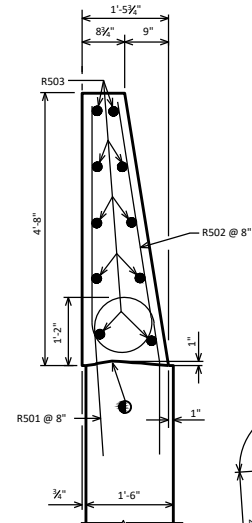


INSIDE ELEVATION
 ◆ ROADWAY OPENING OR 2½" MIN. FOR EXPANSION JOINT.
 USE ½" OPENING WITH FILLER FOR A1 ABUTMENTS

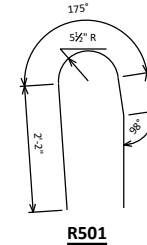


PLAN

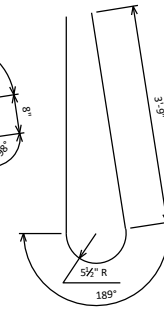
◆ BENCHMARK (WHEN SUPPLIED). AVOID PLACING BELOW A RAIL OR FENCE SYSTEM THAT IS ATTACHED TO THE TOP OF THE PARAPET.



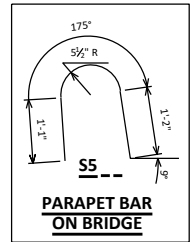
SECTION A



R501



R502



**SS
PARAPET BAR
ON BRIDGE**

OPTIONAL CONSTRUCTION JOINTS IN THE PARAPETS MAY BE USED. RUN BAR REINF. THRU THE JOINT. LAP LENGTH BARS A MIN. OF 1'-9". MIN. JOINT SPACING OF 80'-0". DEFINE CONST. JOINT WITH A ¾" - 'V' GROOVE.

DESIGNER NOTES

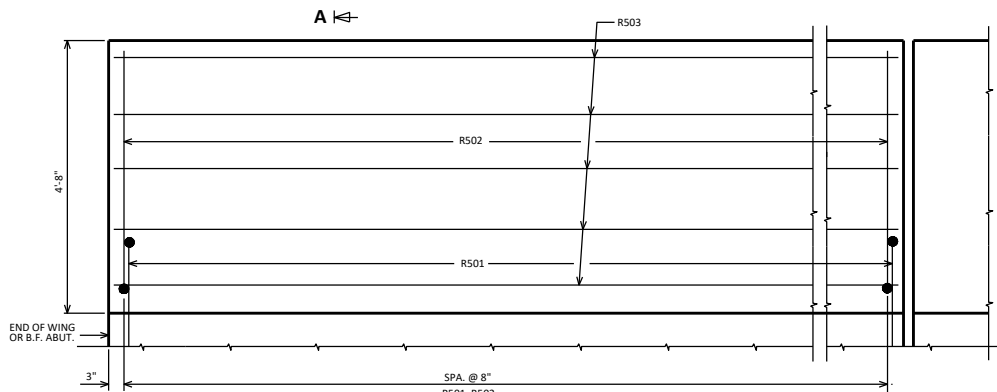
THE '56SS' PARAPET IS ONLY TO BE USED IF A 'TYPE 556' SINGLE SLOPE CONCRETE ROADWAY BARRIER ADJOINS THE END OF THE '56SS' PARAPET.

USE A 1'-6" WING WIDTH FOR WINGS PARALLEL TO THE ROADWAY.

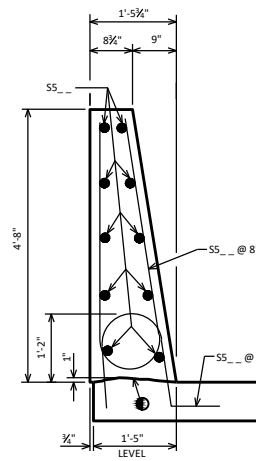
AREA = 5.16 SF
 WEIGHT = 774 LB/FT

◆ CONST. JOINT - STRIKE OFF AS SHOWN.

▽ R501 BARS TO BE TIED TO WING STEEL BEFORE WING IS POURED. DESIGNER MAY ELECT TO USE A R501 BAR IN LIEU OF A SS BAR ADJACENT TO THE PAVING NOTCH ON TYPE A1 ABUTMENTS.



OUTSIDE ELEVATION



SECTION THRU PARAPET ON BRIDGE

BILL OF BARS

FOR ABUTMENT PARAPETS

BAR MARK	COUPL	ABUT.	ABUT.	LENGTH	REINFT	LOCATION
R501	X			5-11	X	PARAPET-VERT.
R502	X			9-1	X	PARAPET-VERT.
R503	X					PARAPET HORIZ.
SS_	X			4-6	X	PARAPET-VERT.

SINGLE SLOPE PARAPET 56SS



APPROVED: *Laura Shadewald* DATE: 7-19