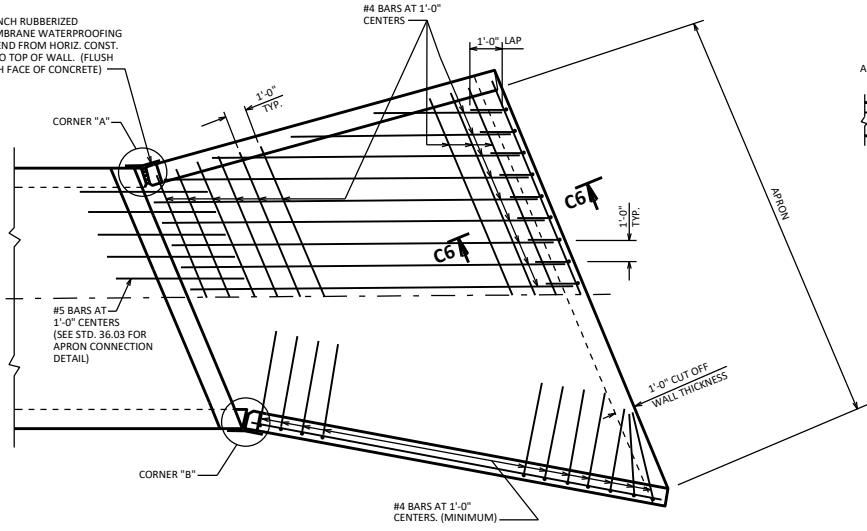
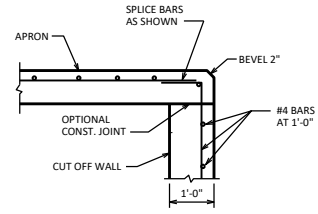


18-INCH RUBBERIZED MEMBRANE WATERPROOFING EXTEND FROM HORIZ. CONST. JT. TO TOP OF WALL. (FLUSH WITH FACE OF CONCRETE)



APRON DETAIL



SECTION C6

"H" (FT.)	"L" (FT.)
≤ 5'-0"	3'-8"
> 5'-0" - 7'-0"	5'-2"
> 7'-0" - 8'-0"	6'-1"
> 8'-0" - 9'-0"	6'-9"
> 9'-0" - 10'-0"	7'-4"
> 10'-0" - 11'-0"	7'-8"
> 11'-0" - 12'-0"	8'-0"
> 12'-0" - 13'-0"	8'-4"
> 13'-0" - 14'-0"	8'-6"

"H" IS MAX. WING WALL HEIGHT

THE AREA OF REINFORCING STEEL NOT IDENTIFIED IN SECTIONS SHALL CONFORM TO THE FOLLOWING TEMPERATURE AND SHRINKAGE REQUIREMENTS:

THICKNESS	T&S REINF.
≤ 12"	#4 @ 18"
> 12" - 18"	#4 @ 12"

NOTES

BAR STEEL REINFORCEMENT SHALL BE EMBEDDED 2" CLEAR UNLESS OTHERWISE SHOWN OR NOTED.

THE CONCRETE IN THE CUT OFF WALL MAY BE PLACED UNDERWATER IF THE EXCAVATION CANNOT BE DEWATERED.

THE "ALTERNATE CUT OFF WALL" DETAIL SHOWN ON THIS SHEET MAY BE USED IN LIEU OF THE CAST-IN-PLACE CONCRETE CUT OFF WALL. PAYMENT SHALL BE BASED ON CONCRETE CUT OFF WALLS.

LOCATE NAME PLATE ON NEAREST RIGHT WING TRAVELING UP STATION, FACE NAME PLATE UP STATION.

DESIGNER NOTES

IF PRECAST ELEMENTS ARE ALLOWED, INCLUDE THE FOLLOWING NOTE ON THE LAYOUT SHEET:

THE CONTRACTOR MAY FURNISH (INCLUDE ALLOWABLE PRECAST ELEMENTS) IN LIEU OF THE CAST-IN-PLACE BOX CULVERT WITH THE ACCEPTANCE OF THE SHOP DRAWINGS BY THE STRUCTURES MAINTENANCE SECTION. THE PRECAST CONCRETE BOX CULVERT SHALL CONFORM TO PRECAST DETAILS IN CHAPTER 36 STANDARDS OF THE CURRENT WISCONSIN DOT BRIDGE MANUAL. PAYMENT FOR THE PRECAST CULVERT SHALL BE BASED ON THE QUANTITIES AND PRICES BID FOR THE ITEMS LISTED IN THE "TOTAL ESTIMATED QUANTITIES".

ALLOWABLE PRECAST ELEMENTS INCLUDE: BOX CULVERT BARREL SECTIONS, WINGWALLS, HEADERS, AND CUTOFF WALLS. APRON FLOORS SHALL BE CAST-IN-PLACE, UNLESS DESIGNED OTHERWISE. THE DESIGNER SHALL DETERMINE IF PRECAST ELEMENTS ARE ALLOWED ON A PROJECT-BY-PROJECT BASIS. PRECAST ONLY DESIGNS REQUIRE PRIOR APPROVAL BY THE BUREAU OF STRUCTURES. WHEN PRECAST ELEMENTS HAVE BEEN DETERMINED TO BE PROHIBITED, ELEMENTS SHALL BE NOTED ACCORDINGLY ON THE PLANS (E.G. "A PRECAST WINGWALL ALTERNATIVE IS NOT ALLOWED").

PROVIDE CAST-IN-PLACE DETAILS ONLY, UNLESS SPECIAL PRECAST DETAILS ARE REQUIRED OR WHEN A PRECAST ONLY DESIGN IS PROVIDED.

PRECAST ONLY DESIGNS REQUIRE PRIOR APPROVAL BY THE BUREAU OF STRUCTURES. SEE BRIDGE MANUAL SECTIONS 36.11.4 AND 36.12 FOR ADDITIONAL INFORMATION. IF USED, PROVIDE PRECAST DETAILS FOLLOWING STANDARDS 36.05 AND 36.06 WITH THE FOLLOWING SPECIFICATIONS:

- PRECAST CONCRETE WINGWALLS (STRUCTURE) (S04.1000.S)
- PRECAST CONCRETE BOX CULVERT, (SPAN SIZE) FT X (RISE SIZE) FT (S04.2000.S)

ALL BAR STEEL FOR CAST-IN-PLACE CONCRETE BOX CULVERTS SHALL BE UNCOATED, EXCEPT WHEN THERE IS NO FILL OVER THE CULVERT, EPOXY COATED BARS SHALL BE USED FOR THE TOP AND BOTTOM BARS IN THE TOP SLAB.

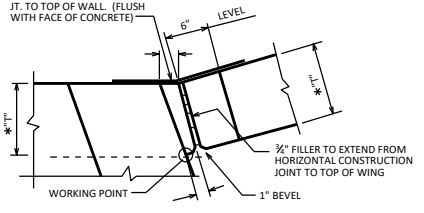
BAR STEEL FOR CAST-IN-PLACE CONCRETE APRONS SHALL BE UNCOATED AND BAR STEEL FOR WINGWALL DOWELS AND ALL WINGWALL BARS SHALL BE EPOXY COATED.

FOR "B" DESIGNATED CONCRETE BOX CULVERTS HAVING THEIR TOP SURFACE AT GRADE, HAND HELD FINISHING MACHINES MAY BE USED. NOTE THIS ON PLANS WHEN APPLICABLE.

SEE STANDARDS 9.01 AND 36.01 FOR ADDITIONAL NOTES.

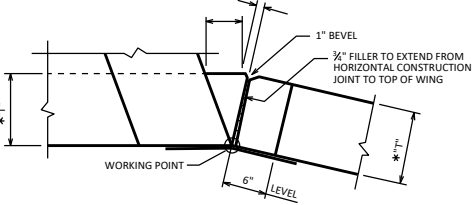
SEE STANDARDS 36.05 AND 36.06 FOR PRECAST BOX CULVERT DETAILS.

18-INCH RUBBERIZED MEMBRANE WATERPROOFING EXTEND FROM HORIZ. CONST. JT. TO TOP OF WALL. (FLUSH WITH FACE OF CONCRETE)

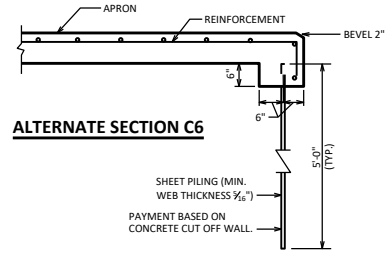


CORNER "A"

* DIMENSION "T" TO BE DETERMINED FROM BARREL DESIGN

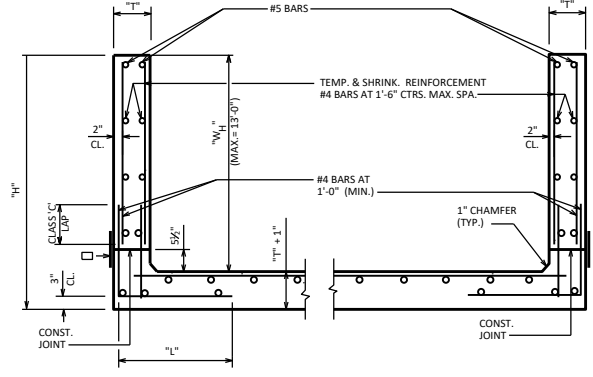


CORNER "B"



ALTERNATE SECTION C6

ALTERNATE CUT OFF WALL



SECTION THRU WINGWALLS

□ 18" MIN. WIDTH RUBBERIZED MEMBRANE WATERPROOFING ALONG HORIZ. CONST. JT. IN WING.

BOX CULVERT APRON DETAILS



APPROVED: *Laura Shadewald*

DATE: 7-23