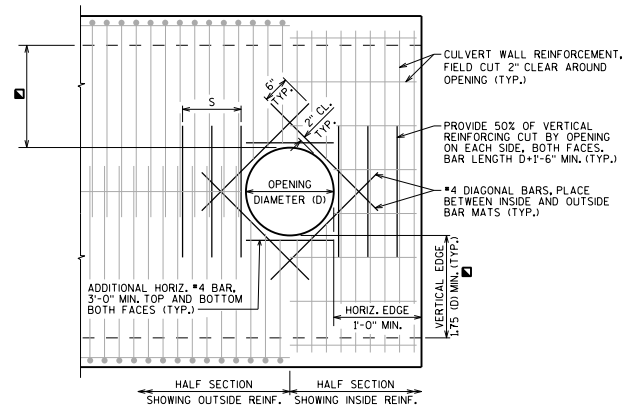


NOTES

ALL BAR STEEL REINFORCEMENT SHALL BE CUT 2" CLEAR AROUND OPENING.

DESIGNER NOTES

DETAILS SHOWN ARE FOR CAST-IN-PLACE CULVERTS. PRECAST CULVERT DETAILS TO BE SIMILAR.



ELEVATION

WHEN $D < 1'-6"$ $S = 1'-6"$
 WHEN $D > 1'-6"$ $S = 1'-6"$ MIN, D MAX

PIPE OPENING IN
 CULVERT WALL



**BUREAU OF
 STRUCTURES**

APPROVED: Bill Oliva

DATE:
 1-13