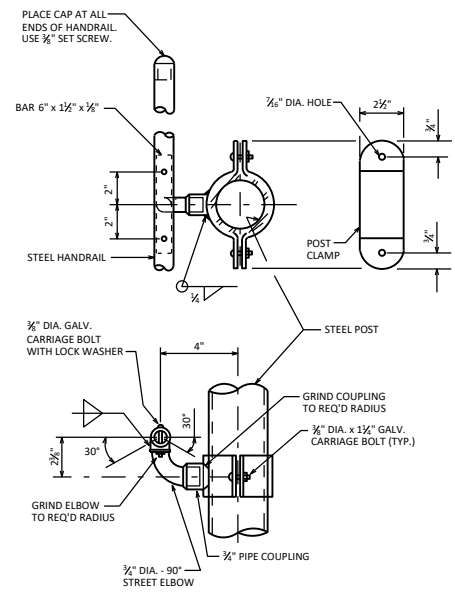


ATTACH FABRIC TO RAILS, AND TO POSTS WITHOUT TENSION BANDS, WITH TIE WIRES (ROUND, 9-GAGE) SPACED AT 1'-0".

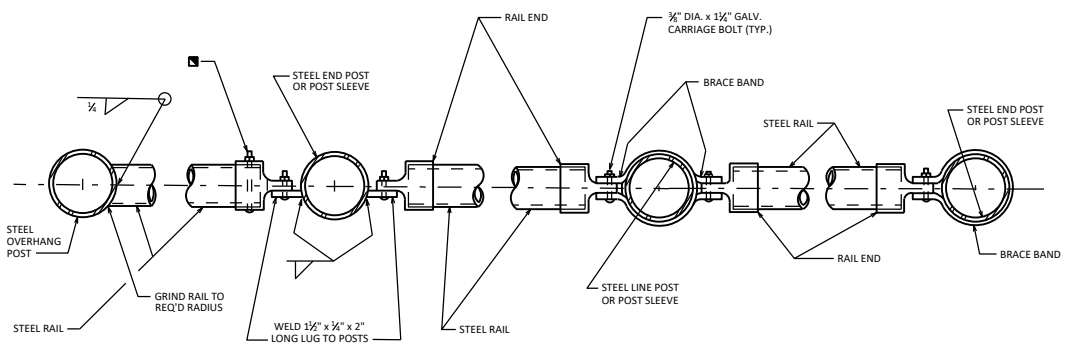
AT LAMP STANDARD

ELEVATION OF FENCE

AT EXPANSION JOINT



HANDRAIL DETAILS



WELDED CONNECTION (AT OVERHANG SECTION)

* DOUBLE CLAMP

END CLAMP

PLAN OF RAILING

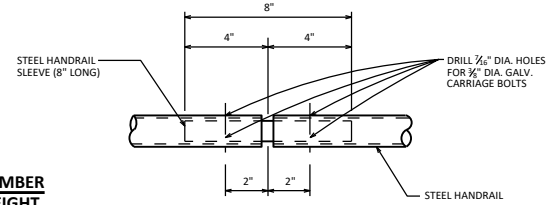
BOLT RAIL TO RAIL END TO SECURE OVERHANG SECTION. ALTERNATE IS TO WELD RAIL DIRECTLY TO END POST.

NOTE: PLACE ALL BOLT HEADS ON SIDE OF FENCE ADJACENT TO PEDESTRIANS

* ALTERNATE TO DOUBLE CLAMP: USE LINE RAIL CLAMP (BOULEVARD) OR 180° BRACE BAND, WHICH MAY BE USED WHEN THE POSTS ARE EITHER BOLTED TO THE POST SLEEVES OR DIRECTLY WELDED TO THE BASE PLATE. (AS SHOWN ON STANDARD 30.11)

FENCE MEMBER SIZE & WEIGHT

STEEL FENCE MEMBER	OUTSIDE DIAMETER (INCHES)	WEIGHT (LB/FT)
RAILS	1.660	2.27
END POST	2.375	3.65
OVERHANG POST	2.375	3.65
LINE POST	2.375	3.65
HANDRAIL	1.660	2.27
CROSS RAIL SLEEVE	1.900	2.72
HANDRAIL SLEEVE	1.315	1.68
POST SLEEVE	4.000	9.12



HANDRAIL SPLICE

PEDESTRIAN OVERPASS DETAILS

BUREAU OF STRUCTURES

APPROVED: *Laura Shadewald* DATE: 7-10