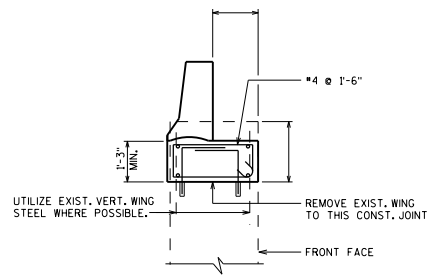
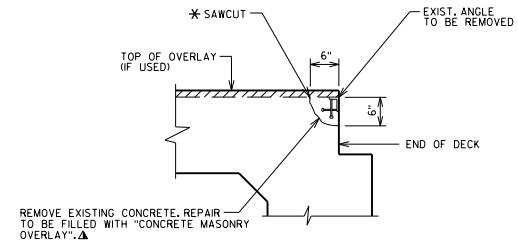


RUPTURED VOID REPAIR



SECTION THRU PARAPET ON WING

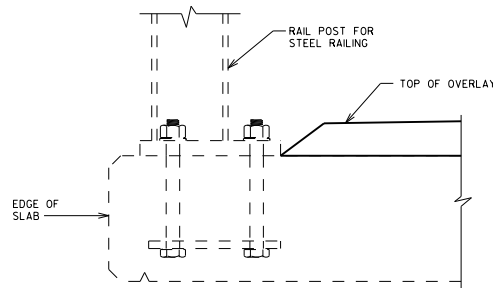


SECTION AT END OF SLAB

509.0301	PREPARATION DECKS TYPE 1	SY
509.0302	PREPARATION DECKS TYPE 2	SY
*509.0310.S	SAWING PAVEMENT DECK PREPARATION AREAS	LF
509.2000	FULL-DEPTH DECK REPAIR	SY
▲509.2500	CONCRETE MASONRY OVERLAY DECKS	CY

DESIGNER NOTES

- * "SAWING PAVEMENT DECK PREPARATION AREAS" NOT REQUIRED FOR CONCRETE OVERLAYS.
 - ▲ USE "CONCRETE MASONRY DECK REPAIR" (SPV.0035) FOR DECK REPAIRS UNDER POLYMER, ASPHALTIC, OR POLYMER MOD. ASPHALTIC OVERLAYS. USE "CONCRETE MASONRY DECK REPAIR" FOR DECK REPAIRS WITHOUT OVERLAYS.
- PROVIDE (IF AVAILABLE) THE MOST CURRENT DECK CONDITION ASSESSMENT SURVEY ON PLANS. INCLUDE SURVEY TYPE AND DATE COMPLETED. THERMOGRAPHY DATA CAN BE FOUND IN HGIS WITHIN GENERAL INVENTORY/FILE/INSPECTION/DATE/INSPECTION SPECIAL REPORT. DECK CONDITION ASSESSMENT SURVEY DATES CAN BE FOUND WITHIN INSPECTION/HISTORY UNDER THE "DEVAL" ACTIVITY TYPE.



SECTION THRU RAILING

ATTACHING PARAPETS OR RAILINGS TO BRIDGE DECKS WITH EPOXY ANCHORS IS NOT ALLOWED BY FHWA.

OVERLAY DETAILS	
	BUREAU OF STRUCTURES
APPROVED: <u>Aaron Bonk</u>	DATE: <u>7-22</u>