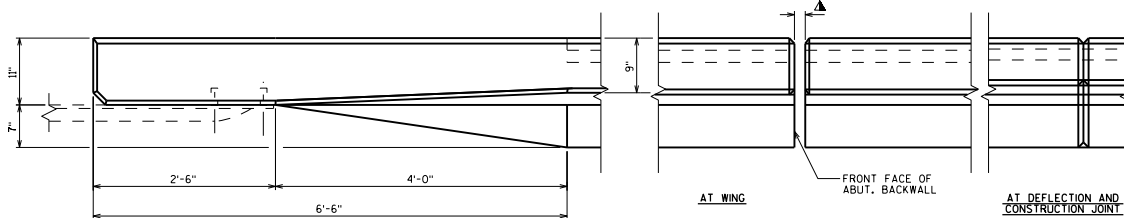
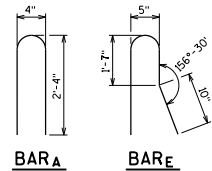


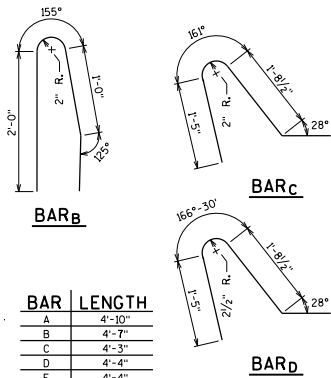
ELEVATION OF PARAPET



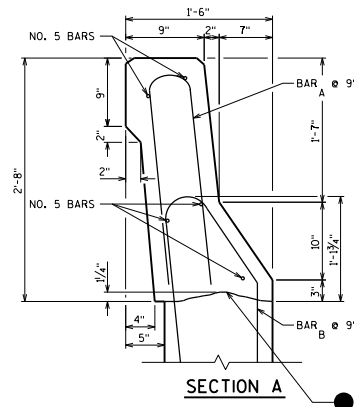
PART PLAN ON PARAPET



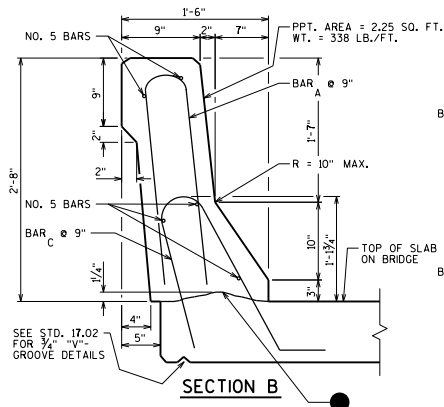
BAR A **BAR E**



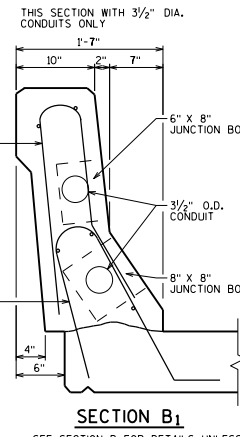
BAR	LENGTH
A	4'-10"
B	4'-7"
C	4'-3"
D	4'-4"
E	4'-4"



SECTION A



SECTION B

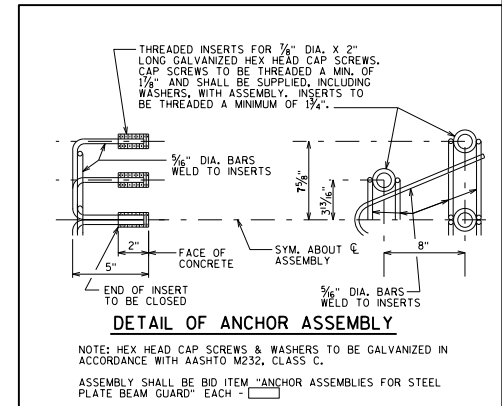


SECTION B1

NOTES

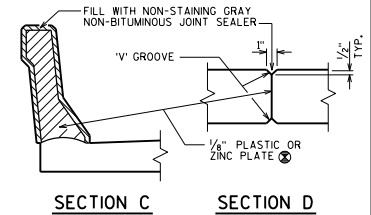
- ALL SLOPED FACE PARAPET "B" REINFORCEMENT ARE NO. 4 BARS UNLESS OTHERWISE SHOWN.
- PLATE REQUIRED WHEN DEFLECTION JOINTS ARE REQUIRED. IF CONSTRUCTION JOINTS IN PARAPETS ARE USED, PLATE SEPARATORS SHALL BE OMITTED. DEFLECTION JOINTS ARE REQUIRED ON SLAB SPAN STRUCTURES ONLY.
- OPTIONAL CONSTRUCTION JOINTS IN THE PARAPETS MAY BE USED. RUN BAR REINFORCEMENT THRU THE JOINT. LAP LONGT. BARS A MIN. OF 2'-11" MIN. JOINT SPACING OF 80'-0". DEFINE CONST. JOINT WITH A 1" V GROOVE.
- CONST. JOINT - STRIKE OFF AS SHOWN & FINISH WITH A WOODEN TROWEL.

	PARAPET
AREA	2.25 SF
WEIGHT	338 LB/FT



DETAIL OF ANCHOR ASSEMBLY

NOTE: HEX HEAD CAP SCREWS & WASHERS TO BE GALVANIZED IN ACCORDANCE WITH AASHTO M232, CLASS C.
ASSEMBLY SHALL BE BID ITEM "ANCHOR ASSEMBLIES FOR STEEL PLATE BEAM GUARD" EACH -



SECTION C

SECTION D

SLOPED FACE PARAPET 'B'



APPROVED: Bill Oliva DATE: 1-19