

★ FOR CULVERT WINGS:

WITH WING WALL THICKNESS ≥ 8" USE:
ADHESIVE ANCHORS 3/8" INCH.
EMBED 5" IN CONCRETE.
SEE DETAIL "A"

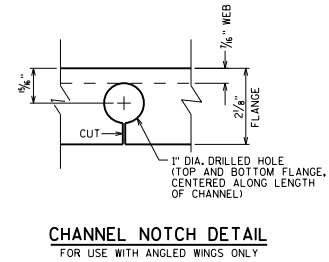
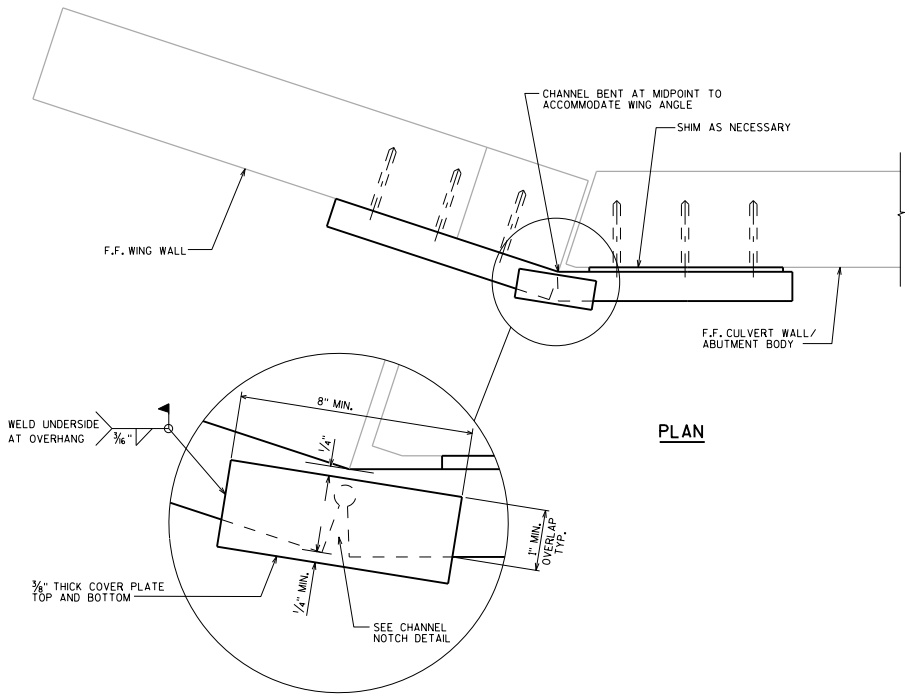
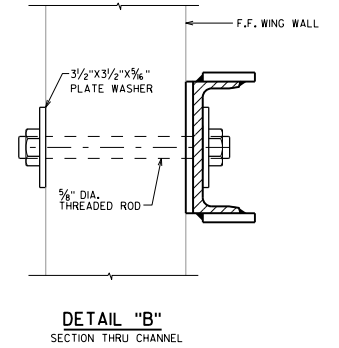
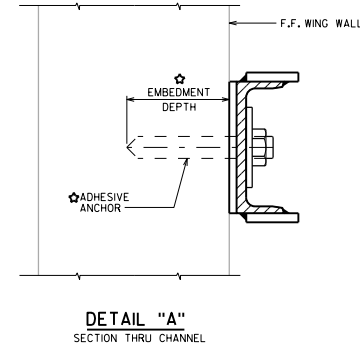
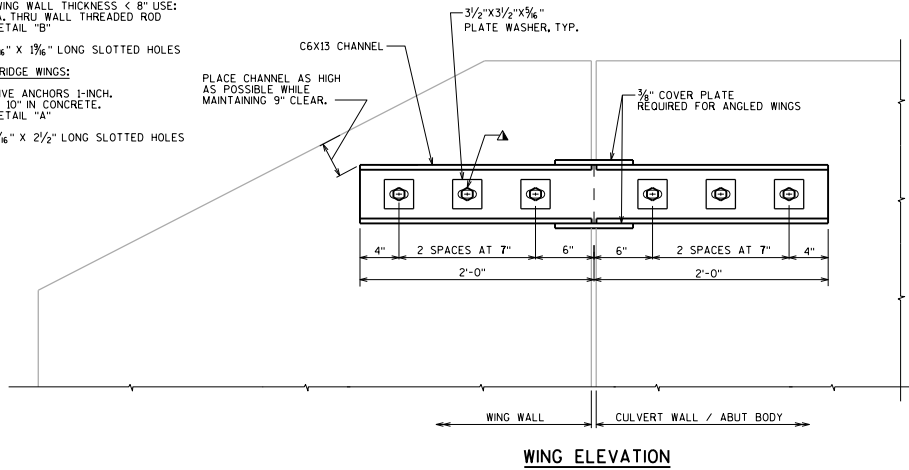
WITH WING WALL THICKNESS < 8" USE:
3/4" DIA. THRU WALL THREADED ROD
SEE DETAIL "B"

USE 1/8" X 1 3/8" LONG SLOTTED HOLES

FOR BRIDGE WINGS:


ADHESIVE ANCHORS 1-INCH.
EMBED 10" IN CONCRETE.
SEE DETAIL "A"

USE 1/8" X 2 1/2" LONG SLOTTED HOLES



NOTES

- WING STRAPPING DETAIL FOR THE PURPOSE OF MITIGATING INWARD WING TIPPING, AS AN ALTERNATIVE TO THE PREFERRED METHOD OF WING REPLACEMENT.
- BID ITEM SHALL BE "STRAPPING B-XX-XXX" WHICH INCLUDES ALL ITEMS SHOWN.
- WISDOT REGIONAL BRIDGE MAINTENANCE ENGINEER TO APPROVE USE OF DETAIL PRIOR TO INSTALLATION.
- ALL PROVIDED STEEL MATERIAL SHALL CONFORM TO ASTM A36.
- ALL STRUCTURAL STEEL SHOWN SHALL BE GALVANIZED. THREADED RODS, MASONRY ANCHORS, NUTS AND WASHERS SHALL BE GALVANIZED IN ACCORDANCE WITH ASTM A153 CLASS C.
- CUTTING AND DRILLING OF CHANNEL SHALL BE DONE IN FABRICATION SHOP, PRIOR TO GALVANIZING.
- IF WELDING COVER PLATE IN FIELD, PRIOR TO WELDING, REMOVE GALVANIZING FROM AREA TO BE WELDED. TOUCH UP WITH PAINT ALL AREAS LACKING GALVANIZING WHEN COMPLETE.
- CAULK AROUND PERIMETER OF CHANNEL AND FILL PORTION OF HOLE AROUND ANCHOR BOLT AND SHIM WITH NON-STAINING GRAY NON-BITUMINOUS JOINT SEALER.
- ADHESIVE ANCHORS SHALL CONFORM TO SECTION 502.2.12 OF THE STANDARD SPECIFICATIONS.

| | |
|---|---------------------------------|
| WING STRAPPING | |
|  | BUREAU OF STRUCTURES |
| APPROVED: <u>Bill Oliva</u> | DATE: <u>7-18</u> |