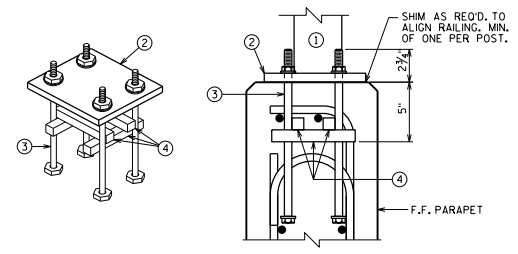


ROWLY OPENING OR 2 1/2" MIN. FOR STRIP SEAL EXP. JOINT & 1/2" OPENING FOR ABUTMENT

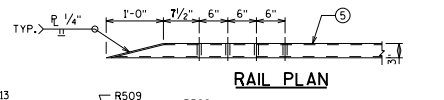


ANCHOR BOLTS FOR RAIL POSTS

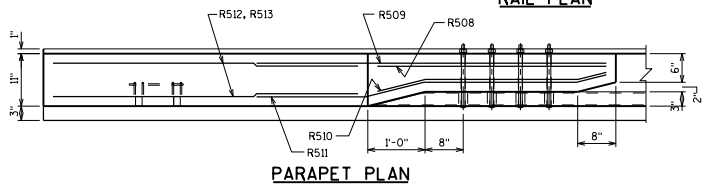
STRIP SEAL EXP. JT. @ ABUT. FOR TYPE A1 ABUT., USE 1/2" FILLER TO TOP OF PARAPET. SEE STD. 12.01/12.02

INSIDE ELEVATION

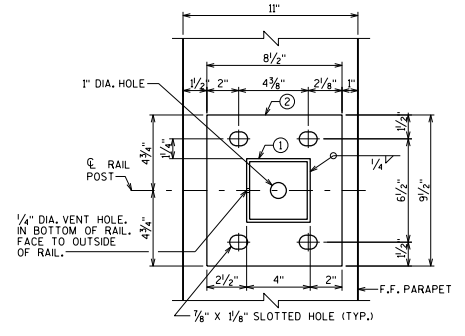
OPTIONAL CONSTRUCTION JOINTS IN THE PARAPETS MAY BE USED. RUN BAR REINF. THRU THE JOINT. LAP LONG. BARS A MIN. OF 1'-5". MIN CONSTR. JT. SPACING OF 80'-0". DEFINE CONSTR. JT. WITH A 1/4" V-GROOVE.



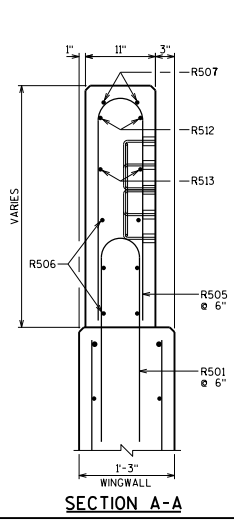
RAIL PLAN



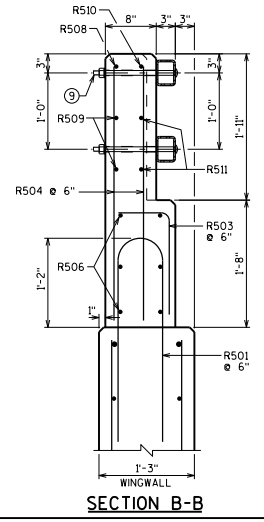
PARAPET PLAN



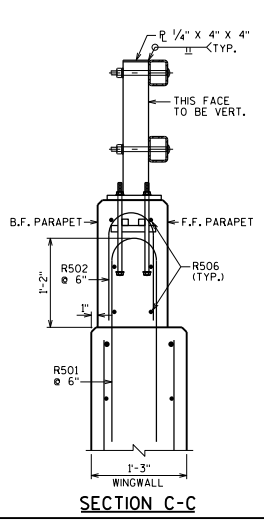
BASE PLATE



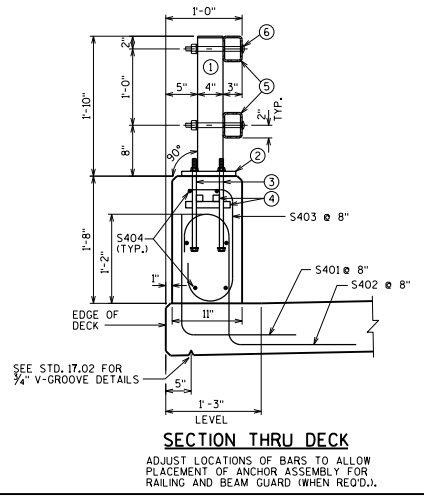
SECTION A-A



SECTION B-B



SECTION C-C



SECTION THRU DECK

ADJUST LOCATIONS OF BARS TO ALLOW PLACEMENT OF ANCHOR ASSEMBLY FOR RAILING AND BEAM GUARD (WHEN REQD.).

DESIGNER NOTES

DETAILS LIMITED TO SKEWS < 40°. SEE STANDARD 40.25 FOR RAILING DETAILS

RAILING WEIGHT = 30 LB/FT

RAILING TUBULAR TYPE 'PF'

DATE: \_\_\_\_\_  
 APPROVED: Bill Oliva 1-17