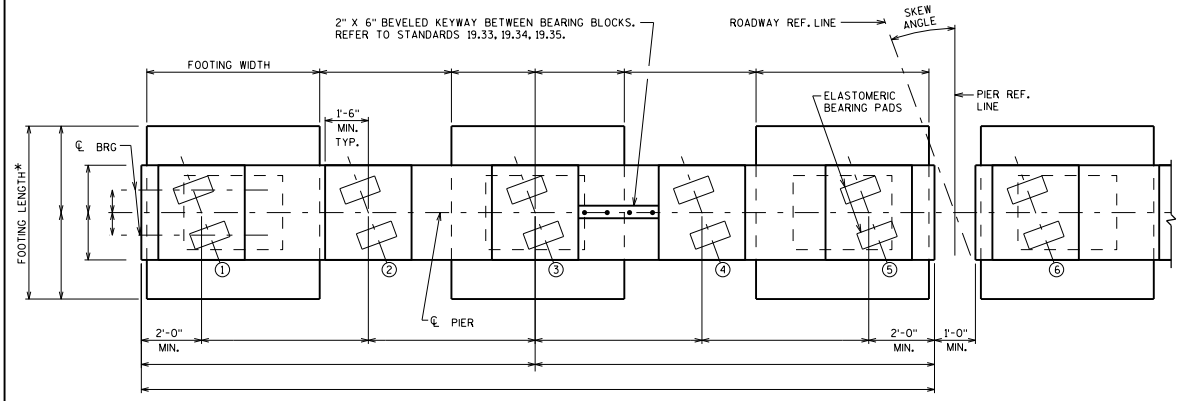


**ELEVATION**  
LOOKING UP STATION

**END VIEW**



**PLAN**

\*MAKE ALL FOOTING LENGTHS THE SAME WITHIN A GIVEN PIER

**CONTRACTOR NOTES**

- THE CONTRACTOR SHALL FOLLOW THIS STANDARD WHEN PRECAST PIERS ARE USED IN LIEU OF THE CAST-IN-PLACE PIER. THE USE OF OPTIONAL PRECAST PIER DETAILS SHALL ONLY BE USED WHEN PLANS INDICATE ALLOWANCE OR WITH APPROVAL BY THE BUREAU OF STRUCTURES.
- PROVIDE A SUITABLE LIFTING DEVICE FOR THE PRECAST CAP, COLUMN AND BEARING BLOCK UNITS.
- STIRRUPS AT THE GROUTED COUPLERS ARE SIZED BASED ON A XX" OUTER DIAMETER COUPLER SLEEVE. ADJUST STIRRUP DIMENSIONS AS REQUIRED IF THE ACTUAL COUPLER SLEEVE DIAMETER DIFFERS.
- MANUFACTURER TO DETERMINE THE PRECAST PIER COLUMN LENGTHS ASSUMING 1/2" STEEL SHIMS AT THE TOP AND BOTTOM OF THE COLUMN.
- GROUTED COUPLER SLEEVES MAY BE OVERSIZED TO ALLOW FOR ADDITIONAL LATERAL TOLERANCE IN THE FIELD. STANDARD WISDOT PRACTICE IS TO OVERSIZE COUPLER SLEEVES BY 1 BAR SIZE. ADJUST SHEAR STIRRUPS AS NECESSARY TO ACCOUNT FOR LARGER DIAMETER COUPLER SLEEVES.
- ALL PRECAST ELEMENTS AND DIAPHRAGM ITEMS PAID PER C.I.P. BID ITEMS. NO ADDITIONAL PAYMENT WILL BE PROVIDED FOR THE PRECAST PIER OPTION.
- THE FOLLOWING SPECIAL PROVISIONS SHALL BE USED:
  - GROUTED BAR COUPLERS (505,1000,S)
  - PRECAST PIER COLUMNS (SPV,0090,XXX)
  - PRECAST PIER CAPS (SPV,0090,XXX)
- THE FOLLOWING ADDITIONAL STANDARDS SHALL BE USED:
  - STANDARD 7.04 - PRECAST PIER CAP AND COLUMN DETAILS
  - STANDARD 7.06 - PRECAST BEARING BLOCKS DETAILS
- THE CONTRACTOR MAY USE PRECAST SEGMENTS AT THEIR DISCRETION (E.G. PRECAST CAP ONLY) WITH APPROVAL BY THE BUREAU OF STRUCTURES. SEE STANDARD 7.07 FOR CAST-IN-PLACE BEARING BLOCK DETAILS AND ADDITIONAL NOTES.

**DESIGNER NOTES**

INCLUDE THE FOLLOWING NOTE ON AT LEAST ONE PIER SHEET FOR EACH PIER:  
 THE CONTRACTOR MAY FURNISH A PRECAST CONCRETE PIER (INSERT ALLOWABLE PRECAST ELEMENTS) IN LIEU OF THE CAST-IN-PLACE PIER WITH THE ACCEPTANCE OF THE SHOP DRAWINGS BY THE STRUCTURES DESIGN SECTION. THE PRECAST CONCRETE PIER SHALL CONFORM TO PRECAST DETAILS IN CHAPTER 7 STANDARDS OF THE CURRENT WISCONSIN DOT BRIDGE MANUAL AND SPECIAL PROVISIONS RELATED TO PRECAST ELEMENTS WITH THE EXCEPTION OF METHOD OF PAYMENT. PAYMENT FOR THE PRECAST PIER SHALL BE BASED ON THE QUANTITIES AND PRICES BID FOR THE ITEMS LISTED IN THE "TOTAL ESTIMATED QUANTITIES" FOR THE CAST-IN-PLACE PIER.

ALLOWABLE PRECAST ELEMENTS INCLUDE COLUMNS, CAPS, AND BEARING BLOCKS THAT HAVE BEEN DETERMINED TO BE INTERCHANGEABLE BETWEEN C.I.P. AND PRECAST OPTIONS. WHEN A PIER CAP HAS BEEN DETERMINED NON-INTERCHANGEABLE "COLUMNS ONLY" MAY BE USED.

PROVIDE CAST-IN-PLACE DETAILS ONLY. PRECAST PIER REFERENCES ARE FOR DESIGNER INFORMATIONAL PURPOSES ONLY AND SHALL NOT BE PLACED ON THE PLANS. PRECAST PIER CONFIGURATION SHALL BE INTERCHANGEABLE BETWEEN C.I.P. AND PRECAST OPTIONS.

ONLY THE PIER CAP LENGTH AND COLUMN LENGTHS SHALL BE MODIFIED. ALL NOTED DIMENSIONS SHALL BE FOLLOWED.

PIERS SHALL BE SUPPORTED BY A MINIMUM OF 3 COLUMNS. WHEN MULTIPLE PIER CAPS ARE USED, EACH SEGMENT SHALL BE SUPPORTED BY A MINIMUM OF 2 COLUMNS.

PROVIDE A CONCRETE DIAPHRAGM BETWEEN PIER CAP SEGMENTS.

MULTIPLE PIER CAP SEGMENTS MAY BE SET AT DIFFERENT ELEVATIONS TO ACCOMMODATE BEARING ELEVATIONS BEYOND CONCRETE BEARING BLOCK LIMITS.

THE MAXIMUM WEIGHT OF EACH PRECAST ELEMENT SHALL BE 90 KIP.


SEE STANDARDS 7.03, 7.04, 7.06, 13.01 AND 13.07 FOR ADDITIONAL PIER NOTES AND DETAILS.

SEE 7.1.4.1.2 FOR ADDITIONAL PRECAST PIER GUIDANCE.

**LEGEND**

- ☆ STD. HOOK (TYP.) ROTATE AND STAGGER AS NEEDED.
- DIMENSION IS FROM BOTTOM OF PIER CAP TO LOW BEAM SEAT.

MATERIAL PROPERTIES:  
 CONCRETE MASONRY  $f'_c = 3,500$  P.S.I.  
 BAR REINFORCEMENT, GRADE 60  $f_y = 60,000$  P.S.I.

<b>PRECAST PIER (OPTIONAL) CAP AND COLUMNS</b>	
	<b>BUREAU OF STRUCTURES</b>
APPROVED: <u>Bill Oliva</u>	DATE: <u>1-19</u>