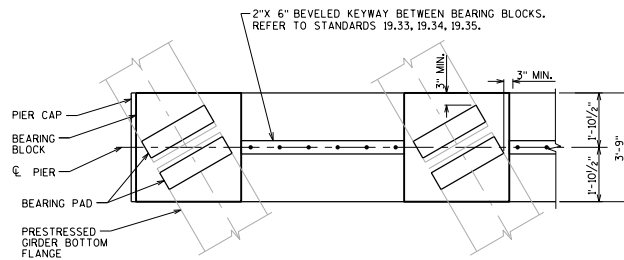
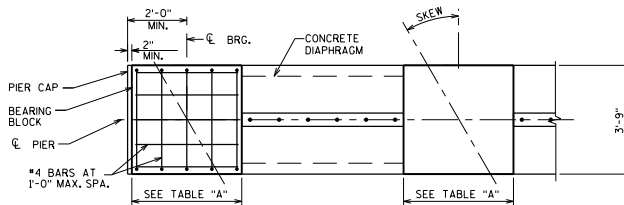


**PARTIAL TRANSVERSE SECTION  
AT DIAPHRAGM PIER**

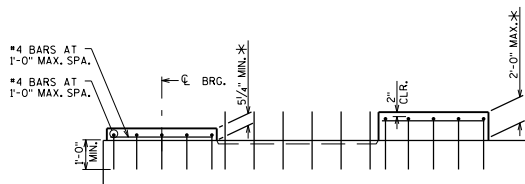
STD. 19.35 SHOWN (STD. 19.33 & 19.34 SIM.)



**PLAN**



**PLAN**



**ELEVATION**

**DESIGNER NOTE**

SEE 7.1.4.1.2 FOR ADDITIONAL PRECAST PIER GUIDANCE.

**CONTRACTOR NOTES**

THE CONTRACTOR SHALL FOLLOW THIS STANDARD WHEN PRECAST PIERS ARE USED AND WHEN CAST-IN-PLACE BEARING BLOCKS ARE USED IN LIEU OF PRECAST BEARING BLOCKS. SEE STANDARD 7.06 FOR ADDITIONAL NOTES AND DETAILS.

**CAST-IN-PLACE CONCRETE DETAIL NOTES**

CAST-IN-PLACE BEARING BLOCK DETAILS SHALL ONLY BE USED WHEN PLANS INDICATE ALLOWANCE FOR PRECAST PIERS.

\* CAST-IN-PLACE HEIGHT = VARIES (5/4\"/>

**CAST-IN-PLACE  
BEARING BLOCK DETAILS**



**BUREAU OF  
STRUCTURES**

APPROVED: Bill Oliva

DATE:  
1-18