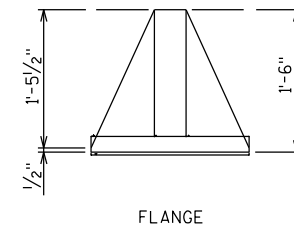
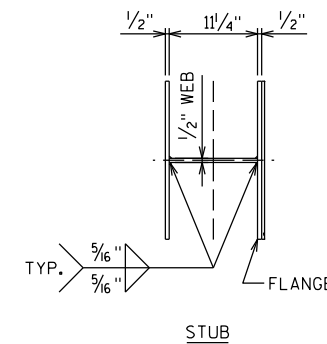
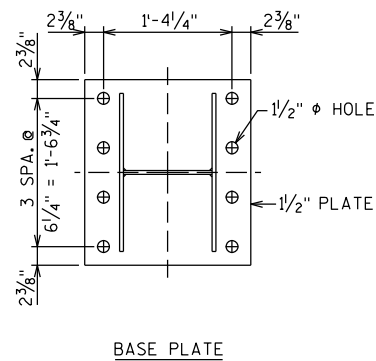
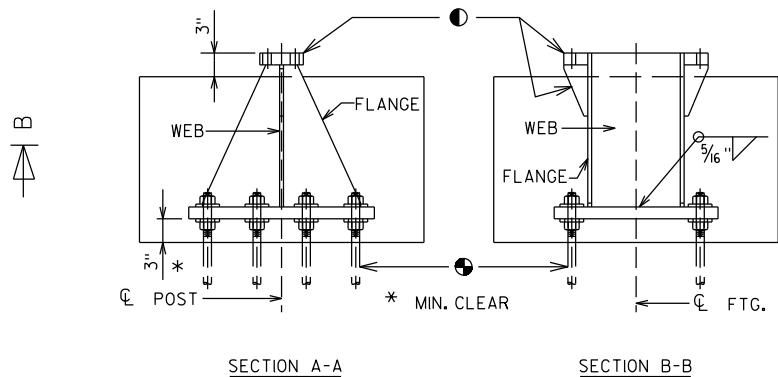
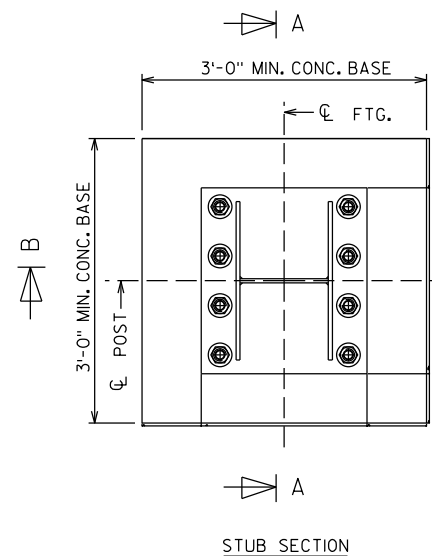


STUB AND ADHESIVE ANCHOR DETAILS



- SEE BASE CONNECTION DETAILS ON "CONNECTIONS & FOUNDATION DETAILS" SHEETS.
- ADHESIVE ANCHORS 1/4"-INCHES. ALLOWABLE PULL OUT CAPACITY = 15 KIPS. EMBED 1'-3" INTO ROCK.

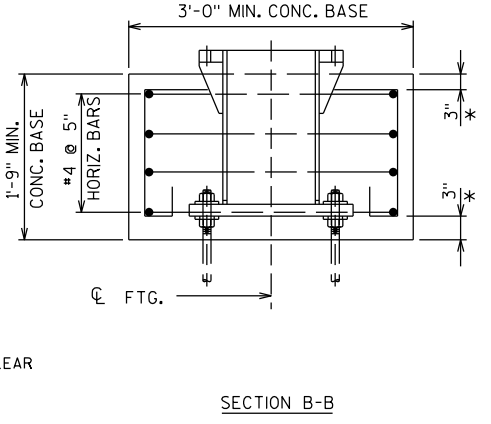
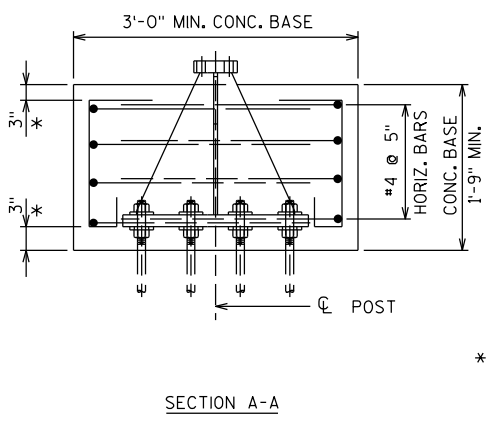
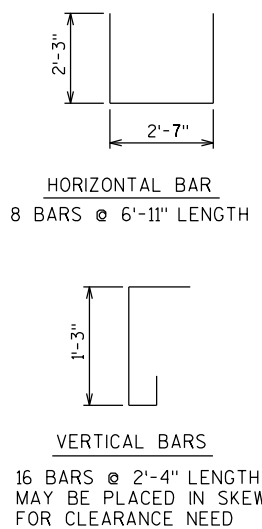
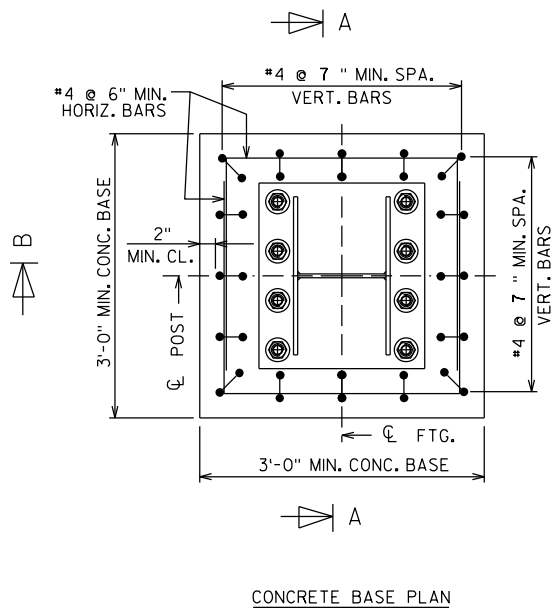
GENERAL NOTES:

QUANTITIES PER BASE:
 REINFORCING STEEL = 62 LB
 CONCRETE = 0.6 CY
 STRUCTURAL STEEL = 335 LB

ALL MATERIALS, EXCEPT FOR ANCHOR ROD, NUTS, AND WASHERS, SHALL BE ASTM A709 GRADE 50. ALL MATERIALS TO BE GALVANIZED AFTER FABRICATION.

IF ROCK IS ENCOUNTERED PRIOR TO REACHING THE MINIMUM DRILLED SHAFT EMBEDMENT DEPTH DEFINED ON THE FOUNDATION DATA TABLE OF THE "CONNECTIONS & FOUNDATION DETAILS 2 OF 2" SHEET, THE CONTRACTOR SHALL INSTALL A TEST ADHESIVE ANCHOR AND DETERMINE THE PULL-OUT CAPACITY. IF THE FIELD TEST RESULTS IN A PULL-OUT CAPACITY GREATER THAN OR EQUAL TO 15 KIPS, THE CONTRACTOR MAY INSTALL THE ALTERNATE CONCRETE BASE AND BREAK-WAY STUB PER THE DETAILS ON THIS SHEET.

CONCRETE BASE DETAILS



7

7

NO.	DATE	REVISION	BY
STATE OF WISCONSIN DEPARTMENT OF TRANSPORTATION STRUCTURES DESIGN SECTION			
STRUCTURE BTO TYPE I SIGNS			
DRAWN BY		PLANS CK'D.	
ALTERNATE BREAK-AWAY BASE ON ROCK			SHEET A3-1M.2