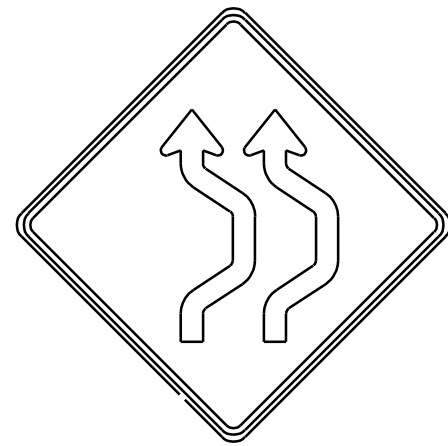
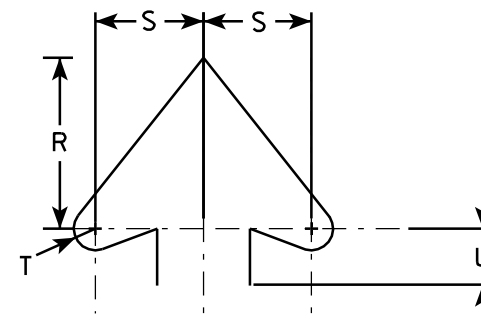
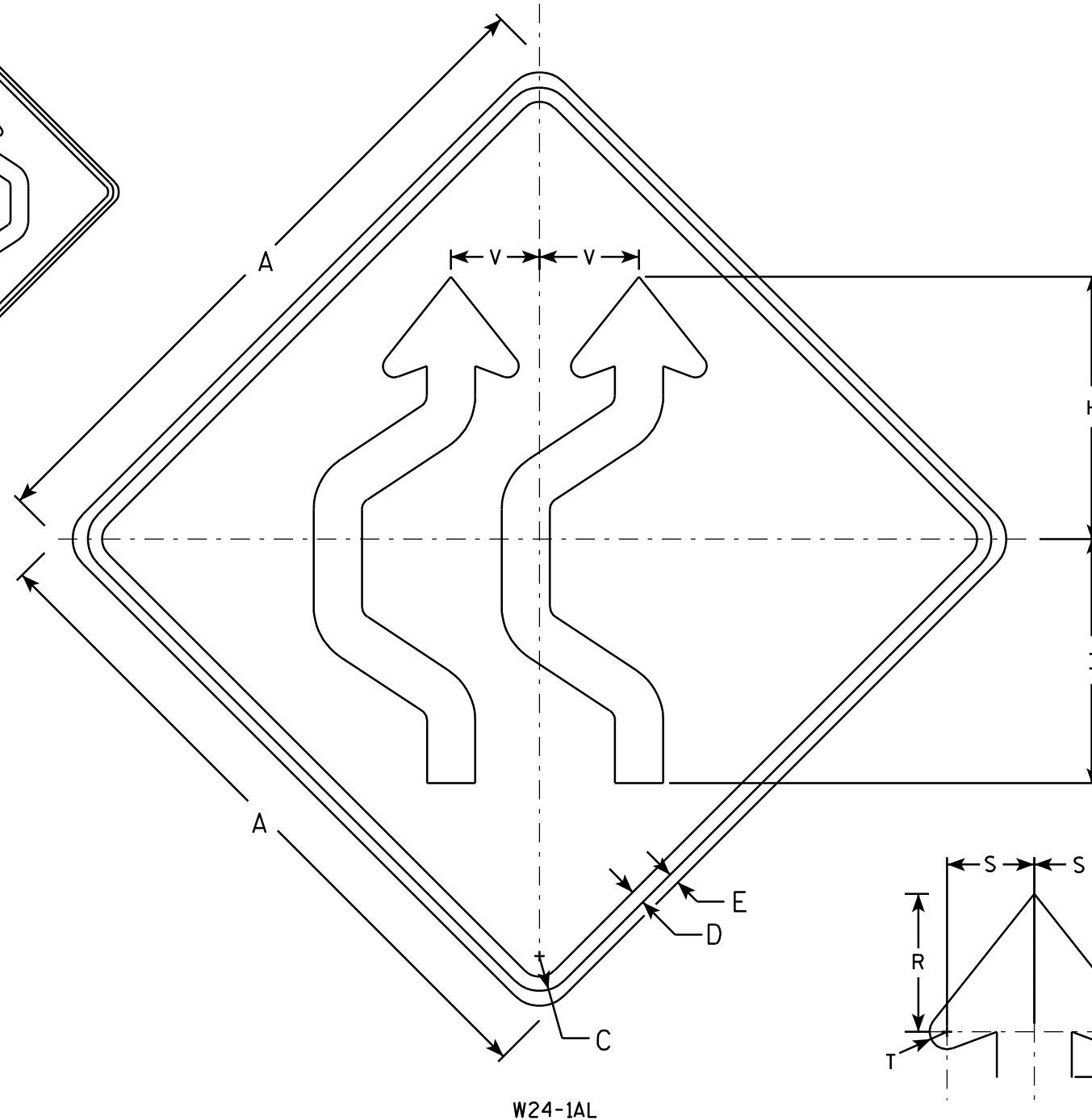


**NOTES**

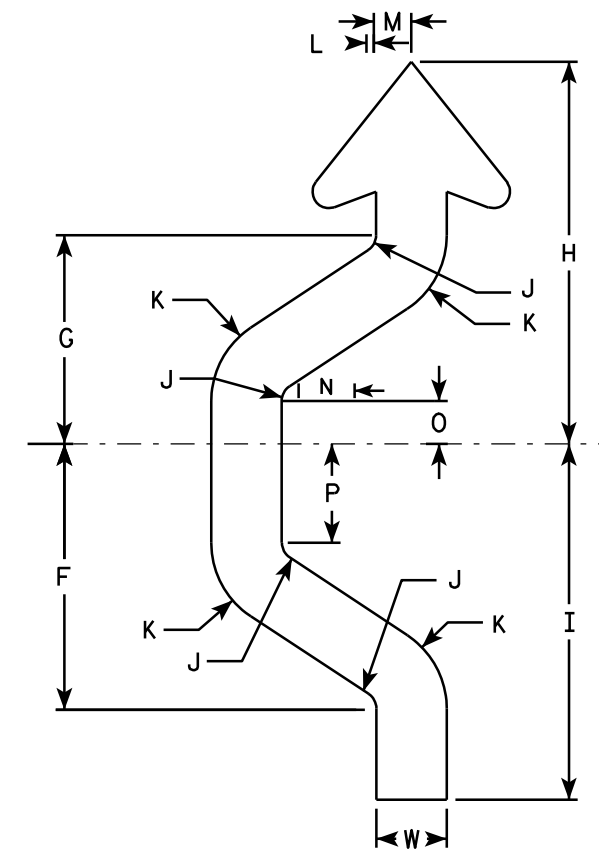
1. Sign is Type II - Type F Reflective - reference WIS DOT Standard Specification for HIGHWAY and STRUCTURE CONSTRUCTION latest edition.
2. Color:  
Background - Orange  
Message - Black
3. Corners may be square or rounded when base material is plywood but borders shall be rounded as shown. When base material is metal, the corners and borders shall be rounded.
4. W24-1R is the same as W24-1L except reversed along the vertical centerline.



W24-1AR



Arrowhead Detail



Arrow Detail

SIZE	A	B	C	D	E	F	G	H	I	J	K	L	M	N	O	P	O	R	S	T	U	V	W	X	Y	Z	Area sq. ft.
1	36		1 3/8	5/8	1/2	9 1/2	7 1/2	13 3/4	12 3/4	5/8	3 1/8	3/8	1 5/8	2 3/8	1 1/2	3 1/2		4 5/8	3	5/8	1 1/2	4 3/4	2 1/2				9
2S	48		2 1/4	1	3/4	12 7/8	10 1/8	18 1/2	17 1/4	7/8	4 1/4	3/8	2 1/8	3 1/4	2	4 3/4		6 1/4	4	3/4	2 1/8	6 1/4	3 3/8				16
2M	48		2 1/4	1	3/4	12 7/8	10 1/8	18 1/2	17 1/4	7/8	4 1/4	3/8	2 1/8	3 1/4	2	4 3/4		6 1/4	4	3/4	2 1/8	6 1/4	3 3/8				16
3	48		2 1/4	1	3/4	12 7/8	10 1/8	18 1/2	17 1/4	7/8	4 1/4	3/8	2 1/8	3 1/4	2	4 3/4		6 1/4	4	3/4	2 1/8	6 1/4	3 3/8				16
4	48		2 1/4	1	3/4	12 7/8	10 1/8	18 1/2	17 1/4	7/8	4 1/4	3/8	2 1/8	3 1/4	2	4 3/4		6 1/4	4	3/4	2 1/8	6 1/4	3 3/8				16
5	48		2 1/4	1	3/4	12 7/8	10 1/8	18 1/2	17 1/4	7/8	4 1/4	3/8	2 1/8	3 1/4	2	4 3/4		6 1/4	4	3/4	2 1/8	6 1/4	3 3/8				16

**STANDARD SIGN**  
**W24-1AL**

WISCONSIN DEPT OF TRANSPORTATION

APPROVED *Matthew R. Rauch*  
For State Traffic Engineer

DATE 3/21/11 PLATE NO. W24-1AL.2

PROJECT NO: \_\_\_\_\_ HWY: \_\_\_\_\_ COUNTY: \_\_\_\_\_ SHEET NO: **E**