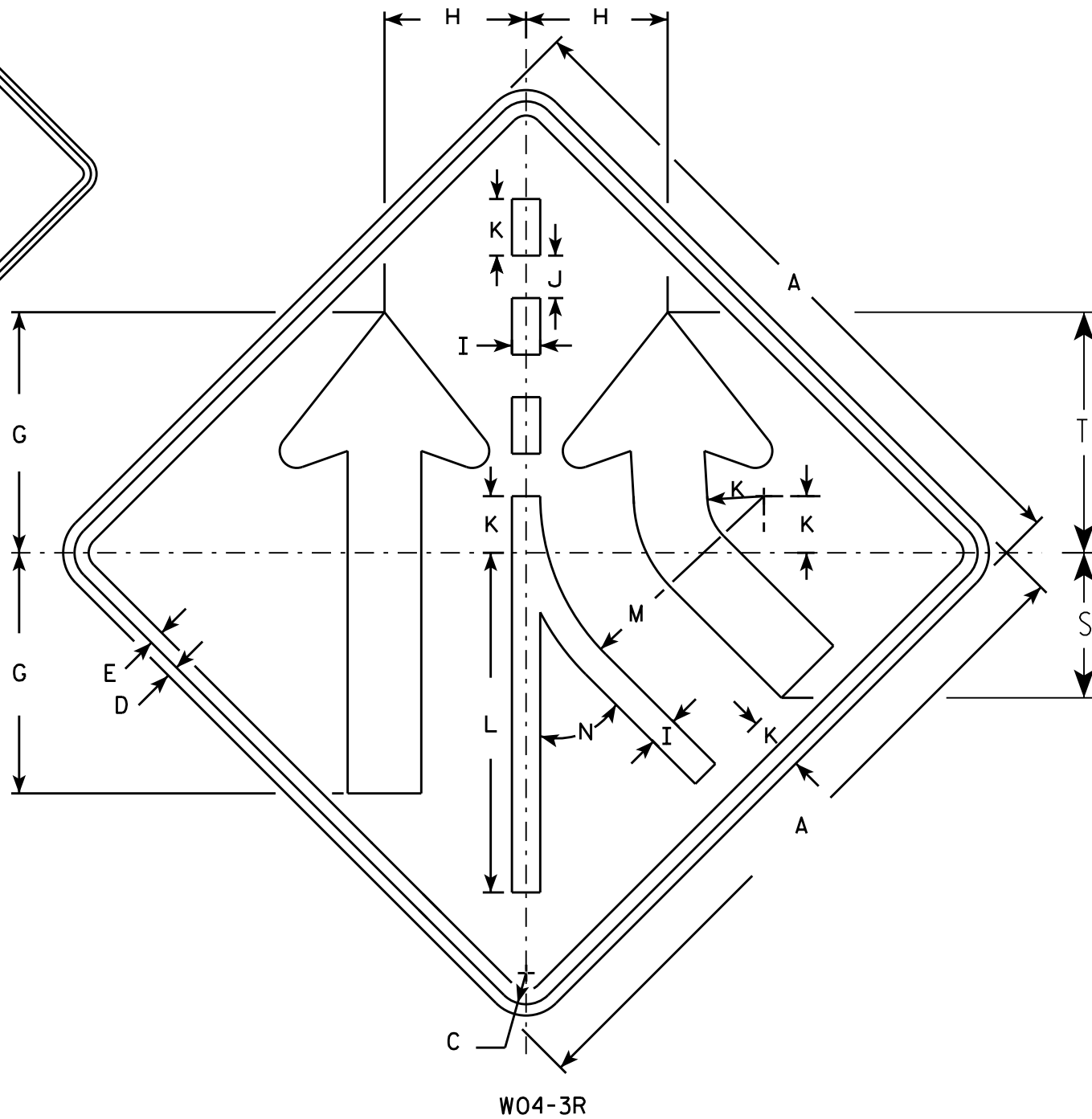


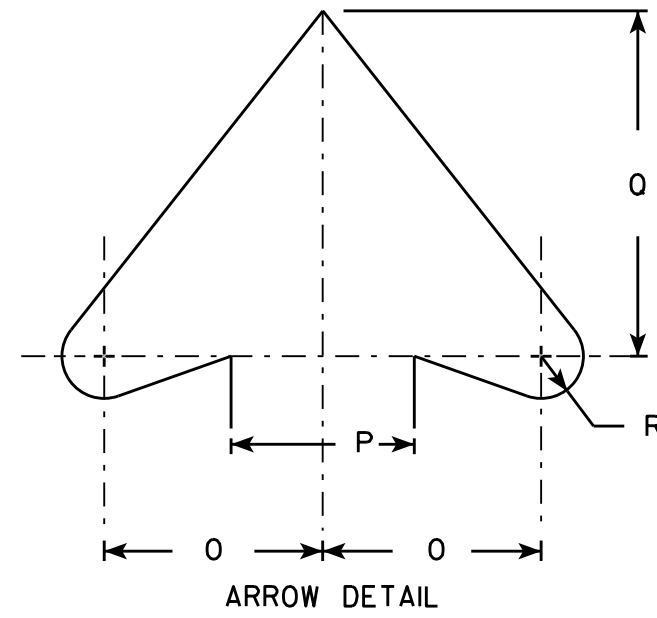
W04-3L



W04-3R

NOTES

1. Sign is Type II - Type F Reflective - reference WIS DOT Standard Specification for HIGHWAY and STRUCTURE CONSTRUCTION latest edition.
2. Color:
Background - Orange
Message - Black
3. Corners may be square or rounded when base material is plywood but borders shall be rounded as shown. When base material is metal, the corners and borders shall be rounded.
4. W04-3 L is the same as W04-3 R except the arrow is reversed along the vertical centerline.



ARROW DETAIL

SIZE	A	B	C	D	E	F	G	H	I	J	K	L	M	N	O	P	O	R	S	T	U	V	W	X	Y	Z	Area sq. ft.
1	36		1 5/8	5/8	3/4		12 3/4	7 1/2	1 1/2	2 1/4	3	18	11 7/8	45°	4 5/8	4	7 3/8	7/8	7 3/4	12 3/4							9.0
2S	48		2 1/4	3/4	1		17	10	2	3	4	24	15 3/4	45°	6 1/4	5 1/2	9 7/8	1 1/4	10 1/4	17							16.0
2M	48		2 1/4	3/4	1		17	10	2	3	4	24	15 3/4	45°	6 1/4	5 1/2	9 7/8	1 1/4	10 1/4	17							16.0
3	48		2 1/4	3/4	1		17	10	2	3	4	24	15 3/4	45°	6 1/4	5 1/2	9 7/8	1 1/4	10 1/4	17							16.0
4	48		2 1/4	3/4	1		17	10	2	3	4	24	15 3/4	45°	6 1/4	5 1/2	9 7/8	1 1/4	10 1/4	17							16.0
5	48		2 1/4	3/4	1		17	10	2	3	4	24	15 3/4	45°	6 1/4	5 1/2	9 7/8	1 1/4	10 1/4	17							16.0

STANDARD SIGN
W0433

WISCONSIN DEPT OF TRANSPORTATION

APPROVED *Matthew R. Rauch*
for State Traffic Engineer

DATE 11/20/13 PLATE NO. W04-3.1