



Wisconsin Department of Transportation

October 15, 2015

Division of Transportation Systems Development

Bureau of Project Development
 4802 Sheboygan Avenue, Rm 601
 P O Box 7916
 Madison, WI 53707-7916

NOTICE TO ALL CONTRACTORS:

Telephone: (608) 266-1631
 Facsimile (FAX): (608) 266-8459

Proposal #11: 1300-13-74
Lakefront Gateway
IH 794 Ramps at Lincoln Memorial Drive
IH 794
Milwaukee County

Letting of November 10, 2015

This is Addendum No. 01, which provides for the following:

Special Provisions

Revised Special Provisions	
Article No.	Description
4	Traffic
78	Storage Layer, ASTM No. 2 Stone, Item SPV.0035.1008
158	Strip Drains, Item SPV.0090.1009; Pre-bored Strip Drains, Item SPV.0090.1010

Added Special Provisions	
Article No.	Description
195	Removing Overhead Sign Support Item SPV.0105.1007

Schedule of Items

Revised Bid Item Quantities					
Bid Item	Item Description	Unit	Old Quantity	Revised Quantity	Proposal Total
205.0100	Excavation Common	CY	74,724	-584	74,140
305.0120	Base Aggregate Dense 1 ¼-Inch	Ton	17,474	142	17,616

Added Bid Item Quantities					
Bid Item	Item Description	Unit	Old Quantity	Revised Quantity	Proposal Total
SPV.0105.1007	Removing Overhead Sign Support S-40-191	LS	0	1	1

Deleted Bid Item Quantities					
Bid Item	Item Description	Unit	Old Quantity	Revised Quantity	Proposal Total
208.0100	Borrow Excavation	CY	1,516	0	0

Plan Sheets

Revised Plan Sheets	
Plan Sheet	Plan Sheet Title (brief description of changes to sheet)
12	Note added to plan sheet regarding EBS.
24	Notes on sheets modified to clarify the relationship between the drainage blanket and the proposed finished grade.
120	Sheet modified to correct the note identifying the size of Geotextile Fabric.
121	Sheet modified to correct the note identifying the size of Geotextile Fabric.
124	Sheet modified to identify type of base material required beneath the Dry Detention Basin.
167	Sheet modified to correct the note identifying the size of Geotextile Fabric.
168	Sheet modified to correct the note identifying the size of Geotextile Fabric.
169	Sheet modified to correct the note identifying the size of Geotextile Fabric.
390	The Earthwork summary and Base Aggregate Dense MQ tables have been revised to correct errors in the quantities.
452	MQ Table added for Removing Overhead Sign Structure bid item
890	Earthwork table modified to correct errors in quantities.
891	Earthwork table modified to correct errors in quantities.
892	Note callouts removed from table headers.
893	Note callouts removed from table headers.
894	Notes and line work added to cross sections to clarify areas of fill, foam concrete and EPS.
895	Notes and line work added to cross sections to clarify areas of fill, drainage blanket and structural backfill.
896	Notes and line work added to cross sections to clarify areas of fill, drainage blanket and structural backfill.
897	Notes and line work added to cross sections to clarify areas of fill, drainage blanket and structural backfill.
901	Notes and line work added to cross sections to clarify areas of fill, foam concrete and EPS.
902	Notes and line work added to cross sections to clarify areas of fill, foam concrete and EPS.
903	Notes and line work added to cross sections to clarify areas of fill, foam concrete and EPS.
904	Notes and line work added to cross sections to clarify areas of fill, drainage blanket and structural backfill.

Added Plan Sheets	
Plan Sheet	Plan Sheet Title (brief description of why sheet was added)
39A	Colored concrete crosswalk jointing detail sheet added to the plans to clarify additional jointing that is required for the project.
309A	Pavement marking and signing sheet added to the plans that was inadvertently omitted from the plan set.

The responsibility for notifying potential subcontractors and suppliers of these changes remains with the prime contractor.

Sincerely,

Mike Coleman

Proposal Development Specialist
Proposal Management Section

ADDENDUM NO. 1

1300-13-74

October 14, 2015

Special Provisions

4. Traffic

*Add the following after paragraph one under section titled **B Road/Ramp Closures and Lane Restrictions**:*

Full overnight closures of Van Buren Street and the IH 794 off ramp to Jackson and Van Buren Street will be required during removal of the existing structures on IH 794 EB off ramp and WB on ramp at Lincoln Memorial Drive. Full closures of these streets will also be required during the construction of the new bridge structures on the proposed realigned ramps. The following closures will be allowed unless otherwise approved by the engineer:

1. No more than two nights to remove existing structures over Van Buren Street.
2. No more than two nights for each structure for the IH 794 ramps girder erection over Van Buren Street.
3. No more than two nights for each structure for installation of formwork over Van Buren Street.
4. No more than two nights for each structure for the IH 794 realigned ramps concrete pours and removal of forms over Van Buren Street.

The local road overnight closures will be limited to the time period between 10:00 PM and 6:00 AM

*Replace paragraph four under section titled **E Local Streets** with the following:*

The existing parking lots beneath IH 794 in the project footprint will not be closed until January 1, 2016. At all times maintain access to residents, tenant parking lots and businesses on the existing local streets within the project work area except as identified in the plans or as approved by the engineer.

78. Storage Layer, ASTM No. 2 Stone, Item SPV.0035.1008

*Replace paragraph two under section titled **C Construction** with the following:*

Install 30 mil PVC liner, with 7 oz. non-woven protective geotextile fabric according to the manufacturer's recommendations. The liner is applied to the bottom and sides of the excavation. Allow for enough liner to exceed the final elevation of the surface. After completion of the surface, the excess liner should be cut flush with the finished grade.

*Replace the last paragraph under section titled **E Payment** with the following:*

Payment is full compensation for the providing and placement of the storage layer for the permeable concrete pavers and bio-filtration basins. Payment for the storage layer shall include payment for placement of 30 mil PVC liner with 7 oz. non-woven protective geotextile fabric, and placement and compaction of ASTM No. 2 Stone; and preparation of the sub-soil base. Underdrain placed beneath or above the storage layer will be paid for separately as Underdrain. Bedding for underdrain within or on top of the storage layer will be paid for as part of the storage layer. Excavation for the storage layer and other components of the permeable pavement system and bio-filtration basins will be paid for as common excavation.

158. Strip Drains, Item SPV.0090.1009; Pre-bored Strip Drains, Item SPV.0090.1010

Replace section titled D Measurement with the following:

D Measurement

The department will measure Strip Drains and Pre-bored Strip Drains by the linear foot for the full length of strip drain installed, acceptably completed. The contractor will not be paid for any more than an 18 inch length of strip drain extending above the drainage blanket. The pay items under this special provision will be measured and paid under one item or the other. No measurement or payment will be made under the bid item strip drains if the strip drain requires pre-boring.

195. Removing Overhead Sign Support Item SPV.0105.1007

A Description

Work under this item shall consist of removing the overhead sign structure and footing. The sign on the structure is paid for under a separate pay item, Removing Signs Type II. See signing plans for location.

B (Vacant)

C Construction

Remove overhead sign supports and concrete footings, backfill the resulting holes, and dispose of all materials outside of the right-of-way in accordance with Sections 204.3 and 638.3 of the Standard Specifications. Concrete footing shall be removed to 2' below the existing ground. The reinforcement shall be cut off flush with the top of the concrete. The footing shall be then covered with topsoil and seeded. This is all incidental to Remove Overhead Sign Structure.

D Measurement

The department will measure Removing Overhead Sign Support, as a single lump sum unit of work in place and accepted.

E Payment

The department will pay for the measured quantity at the contract unit price under the following bid item:

ITEM NUMBER	DESCRIPTION	UNIT
SPV.0105.1007	Removing Overhead Sign Support S-40-191	LS

Payment in full compensation for disassembling, removing, including concrete footings, backfilling, and disposal of all materials.
638-SER1 (20040405)

Schedule of Items

Attached, dated October 15, 2015, are the revised Schedule of Items Pages 6 – 9 and 57.

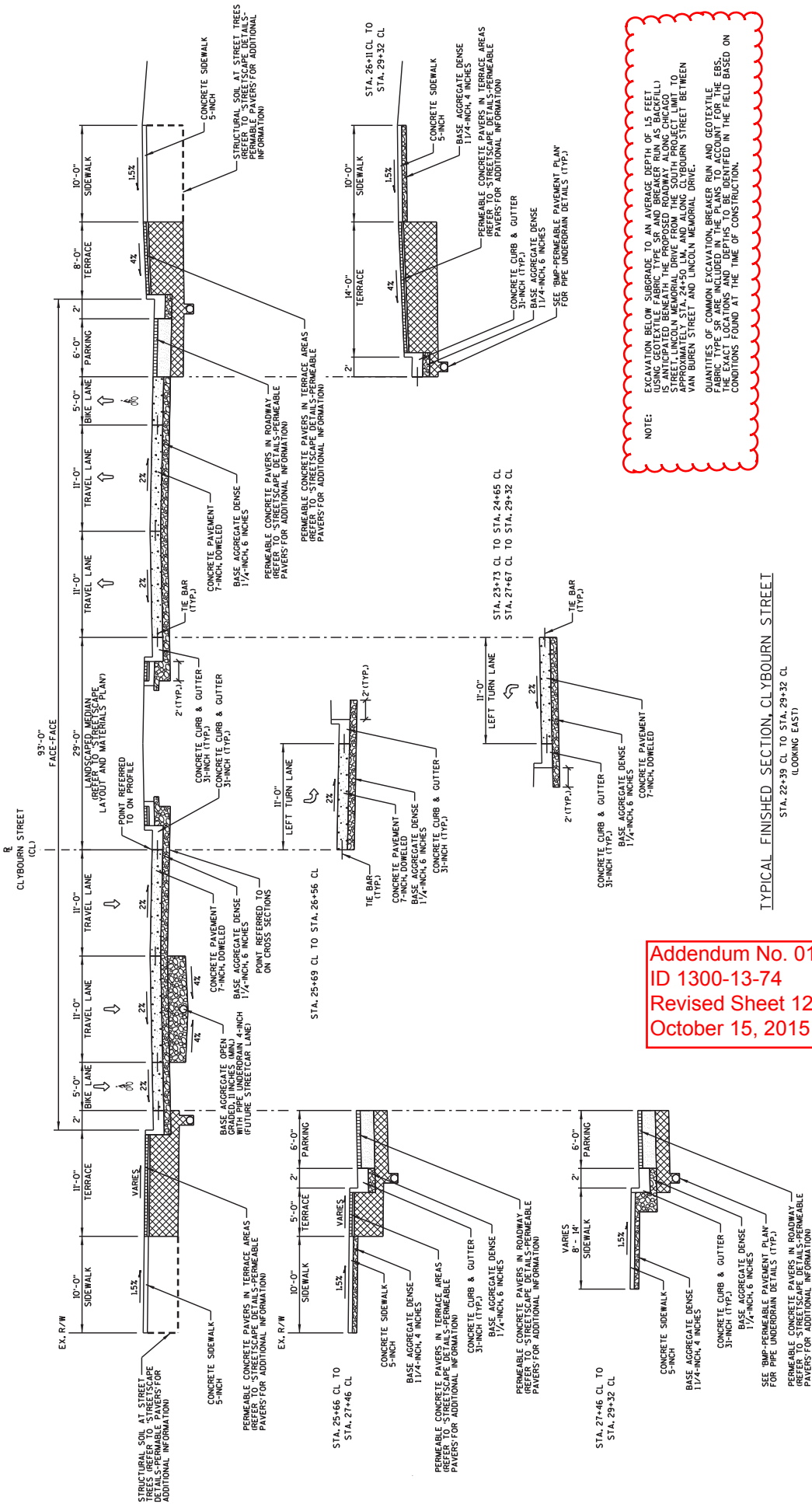
Plan Sheets

The following 8½ x 11-inch sheets are attached and made part of the plans for this proposal:

Revised: 12, 24, 120, 121, 124, 167 - 169, 390, 452, 890 – 897, and 901 - 904.

Added: 39A, 309A

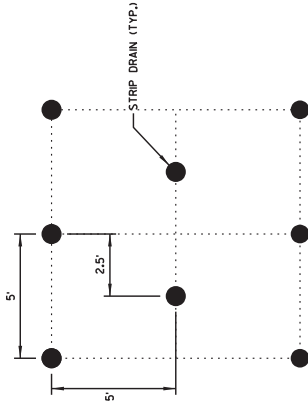
END OF ADDENDUM



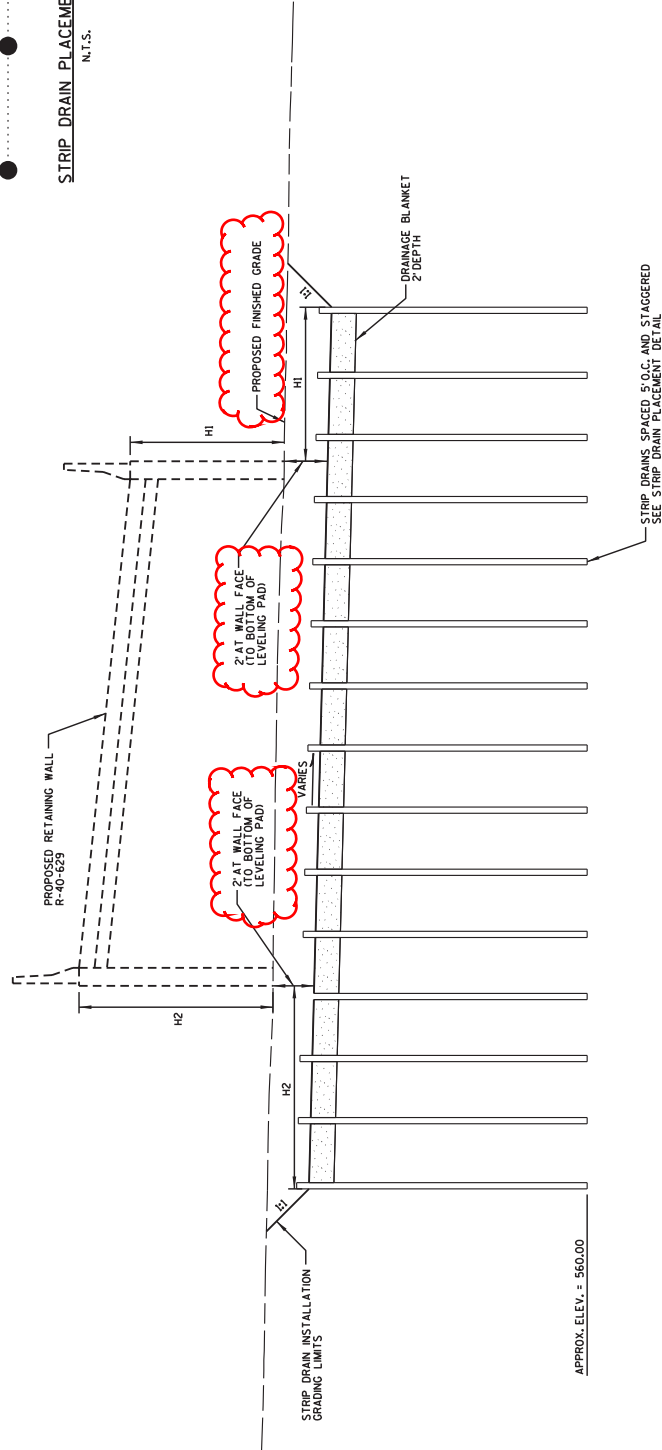
NOTE:
 EXCAVATION BELOW SUBGRADE TO AN AVERAGE DEPTH OF 1.5 FEET USING GEOTEXTILE FABRIC TYPE SR AND BREAKER RUN AS BACKFILL IS ANTICIPATED BENEATH THE PROPOSED ROADWAY ALONG CHICAGO STREET FROM APPROXIMATELY STA. 24+50 TO APPROXIMATELY STA. 24+50, L.M. AND ALONG CLYBOURN STREET BETWEEN VAN BUREN STREET AND LINCOLN MEMORIAL DRIVE.
 QUANTITIES OF COMMON EXCAVATION, BREAKER RUN AND GEOTEXTILE FABRIC TYPE SR ARE INCLUDED IN THE PLANS TO ACCOUNT FOR THE EBS. THE EXACT LOCATIONS AND DEPTHS TO BE IDENTIFIED IN THE FIELD BASED ON CONDITIONS FOUND AT THE TIME OF CONSTRUCTION.

Addendum No. 01
 ID 1300-13-74
 Revised Sheet 12
 October 15, 2015

TYPICAL FINISHED SECTION, CLYBOURN STREET
 STA. 22+39 CL TO STA. 29+32 CL
 (LOOKING EAST)

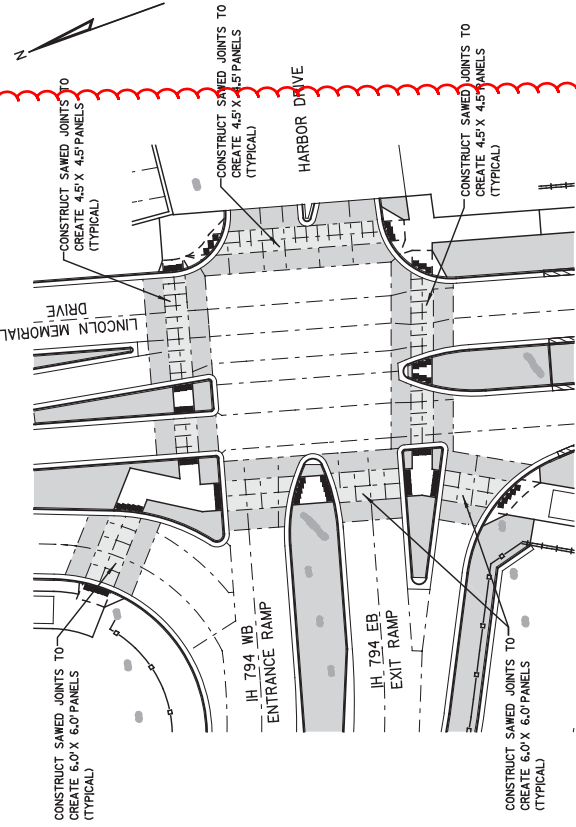


STRIP DRAIN PLACEMENT DETAIL
N.T.S.

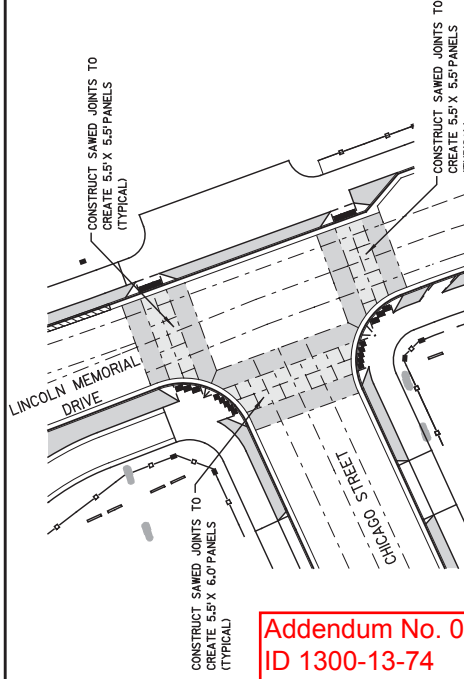


TYPICAL CROSS SECTION -
STRIP DRAIN AND DRAINAGE BLANKET INSTALLATION
(LOOKING EAST)
N.T.S.

Addendum No. 01
ID 1300-13-74
Revised Sheet 24
October 15, 2015



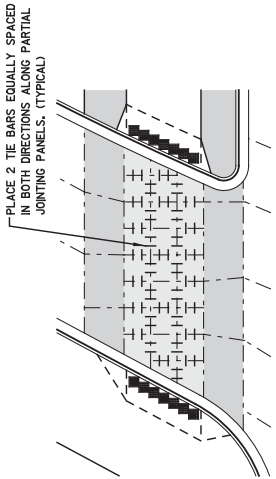
LINCOLN MEMORIAL DRIVE AT IH 794 WB ENTRANCE AND EB EXIT RAMPS



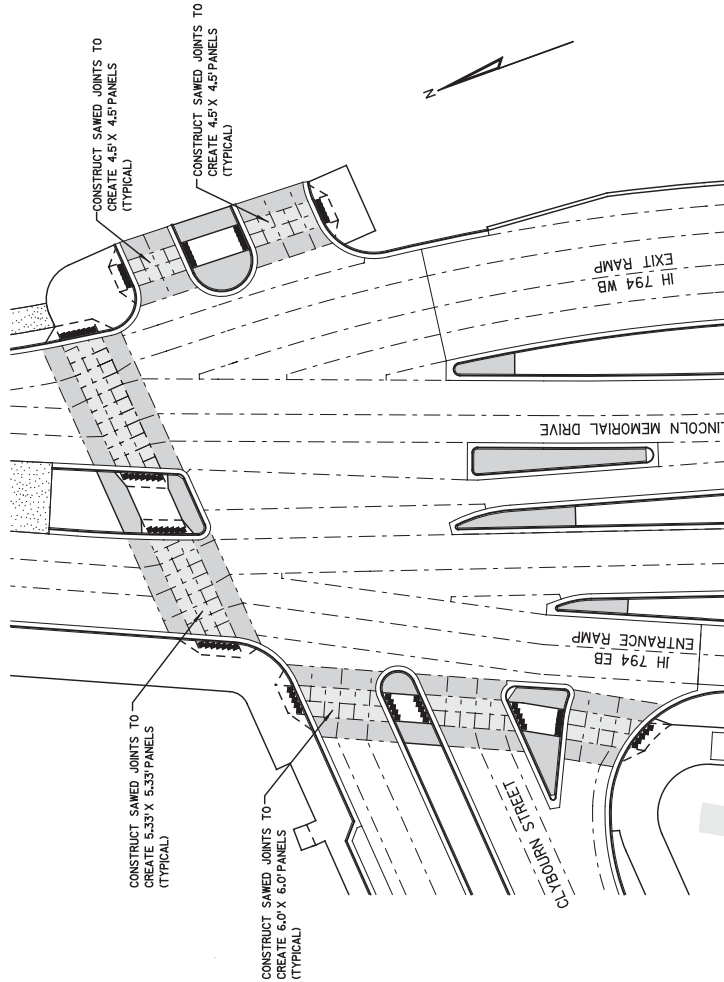
LINCOLN MEMORIAL DRIVE AT CHICAGO STREET

Addendum No. 01
 ID 1300-13-74
 Added Sheet 39A
 October 15, 2015

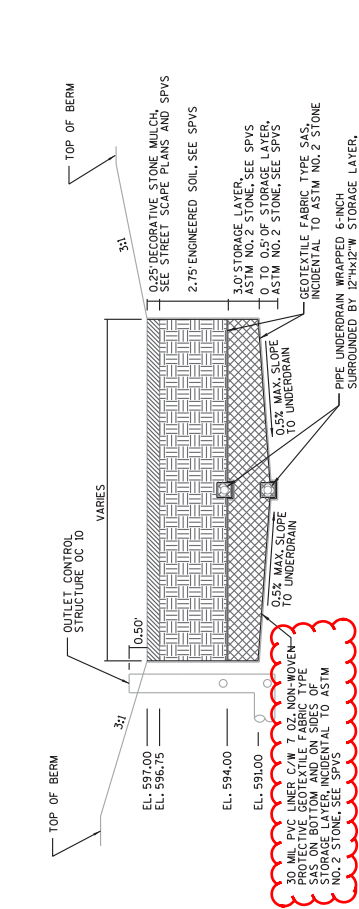
- GENERAL NOTES**
1. ADDITIONAL JOINTING & TIE BARS SHOWN WITHIN THE COLORED CROSSWALK AREAS IS CONSIDERED INCIDENTAL TO THE CONCRETE PAVEMENT ITEMS.
 2. THE FINAL LOCATION OF ALL JOINTING AND TIE BARS SHALL BE APPROVED BY THE ENGINEER.
 3. TIE BARS AND DOWEL BARS FOR STANDARD LONGITUDINAL AND TRANSVERSE JOINTING SHALL BE IN ACCORDANCE WITH THE WISDOT STANDARD DETAIL DRAWING "URBAN CONCRETE DOWELED PAVEMENT".



TIE BAR LOCATIONS FOR COLORED CONCRETE CROSSWALK PARTIAL PANELS

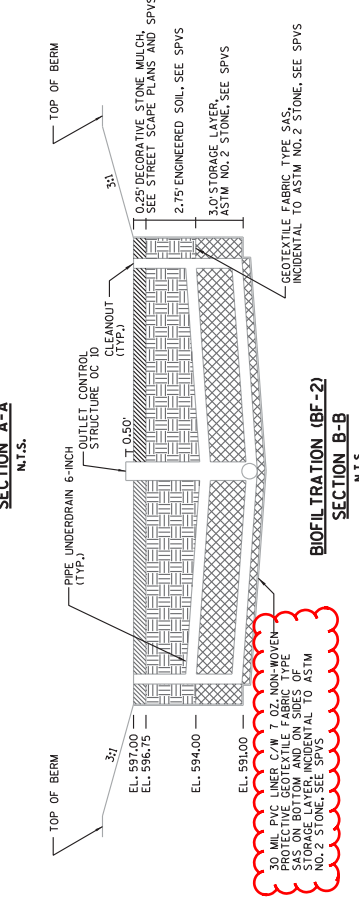


LINCOLN MEMORIAL DRIVE AT CLYBOURN STREET



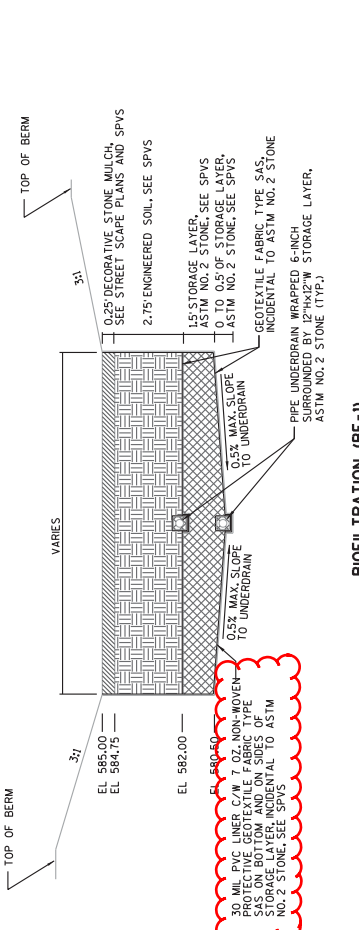
BIOFILTRATION (BF-1)
SECTION A-A
N.T.S.

30 MIL PVC LINER C/W 7 OZ. NON-MOVEN PROTECTIVE GEOTEXTILE FABRIC TYPE SAS ON BOTTOM AND ON SIDES OF STORAGE LAYER, INCIDENTAL TO ASTM NO. 2 STONE. SEE SPVS.



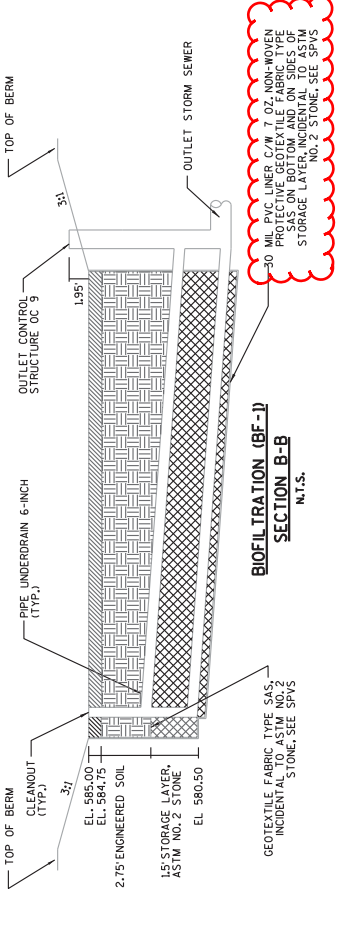
BIOFILTRATION (BF-2)
SECTION A-A
N.T.S.

30 MIL PVC LINER C/W 7 OZ. NON-MOVEN PROTECTIVE GEOTEXTILE FABRIC TYPE SAS ON BOTTOM AND ON SIDES OF STORAGE LAYER, INCIDENTAL TO ASTM NO. 2 STONE. SEE SPVS.



BIOFILTRATION (BF-1)
SECTION B-B
N.T.S.

30 MIL PVC LINER C/W 7 OZ. NON-MOVEN PROTECTIVE GEOTEXTILE FABRIC TYPE SAS ON BOTTOM AND ON SIDES OF STORAGE LAYER, INCIDENTAL TO ASTM NO. 2 STONE. SEE SPVS.

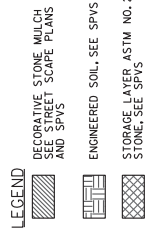


BIOFILTRATION (BF-2)
SECTION B-B
N.T.S.

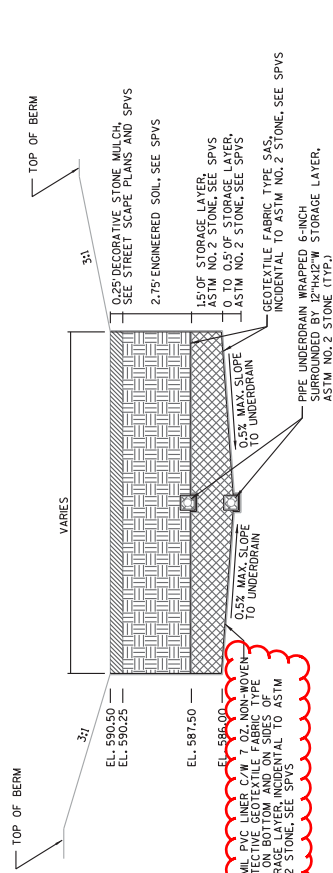
30 MIL PVC LINER C/W 7 OZ. NON-MOVEN PROTECTIVE GEOTEXTILE FABRIC TYPE SAS ON BOTTOM AND ON SIDES OF STORAGE LAYER, INCIDENTAL TO ASTM NO. 2 STONE. SEE SPVS.

GENERAL NOTES

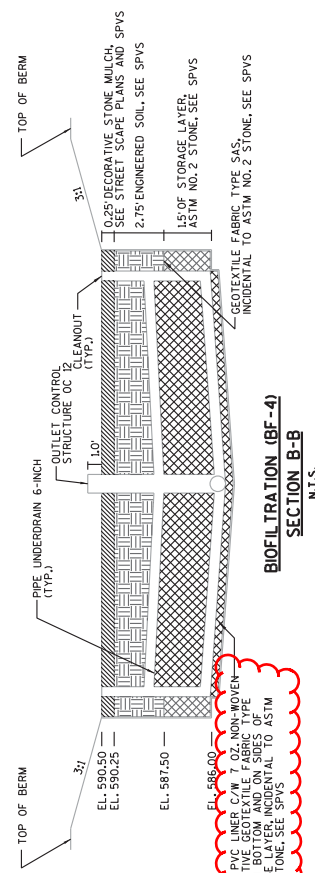
1. SEE OVERALL BMP SHEET FOR ADDITIONAL GENERAL BMP NOTES.
2. SEE STORM SEWER PLANS AND GRADING SHEETS FOR LAYOUT AND ELEVATIONS.
3. COVER FILTER FABRIC WITH 2 INCHES OF STORAGE COVER, ASTM NO. 2 STONE, BEFORE INSTALLING UNDERDRAIN WRAPPED-6 INCH, CLEANOUTS, AND STAND PIPES.
4. FOR STAND PIPE AND CLEANOUT DETAILS, SEE CONSTRUCTION DETAILS.
5. VARY DEPTH OF ENGINEERED SOIL LAYER AND STORAGE LAYER, ASTM NO. 2 BASED ON SLOPE OF UNDERDRAIN SYSTEM AS SHOWN ON PLANS.
6. USE 6" PVC CLEANOUT FOR UNDERDRAIN COLLECTORS IN BIOFILTRATION.
7. IMPERMEABLE LINER SHALL FOLLOW THE OUTSIDE LAYOUT OF BIOFILTRATION BASIN.
8. GEOTEXTILE FABRIC, TYPE SAS, SHALL BE WRAPPED AROUND UNDERDRAIN PIPES, INSTALLED BETWEEN ENGINEERED SOIL, STORAGE LAYER, AND IMPERMEABLE LINER, BETWEEN STORAGE LAYER AND IMPERMEABLE LINER.



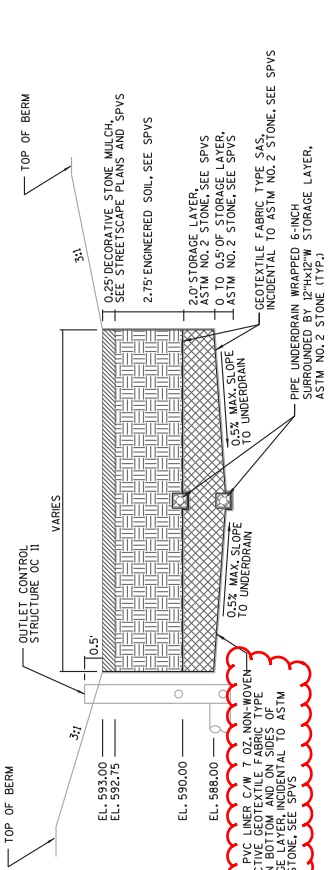
Addendum No. 01
ID 1300-13-74
Revised Sheet 120
October 15, 2015



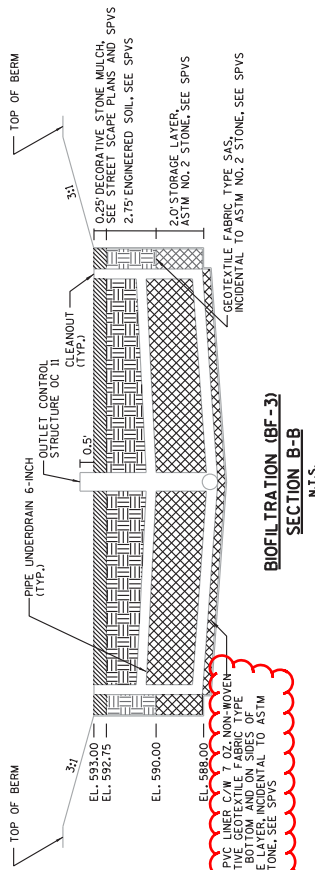
BIOFILTRATION (BF-3)
SECTION A-A
N.T.S.



BIOFILTRATION (BF-4)
SECTION A-A
N.T.S.



BIOFILTRATION (BF-3)
SECTION B-B
N.T.S.



BIOFILTRATION (BF-4)
SECTION B-B
N.T.S.

GENERAL NOTES

1. SEE OVERALL BMP SHEET FOR ADDITIONAL GENERAL BMP NOTES.
2. SEE STORM SEWER PLANS AND GRADING SHEETS FOR LAYOUT AND ELEVATIONS.
3. COVER FILTER FABRIC WITH 2 INCHES OF STORAGE COVER ASTM NO. 2 STONE BEFORE INSTALLING UNDERDRAIN WRAPPED-6 INCH CLEANOUTS, AND STAND PIPES.
4. FOR STAND PIPE AND CLEANOUT DETAILS, SEE CONSTRUCTION DETAILS.
5. VARY DEPTH OF ENGINEERED SOIL LAYER AND STORAGE LAYER, ASTM NO. 2 BASED ON SLOPE OF UNDERDRAIN SYSTEM AS SHOWN ON PLANS.
6. USE 6" PVC CLEANOUT FOR UNDERDRAIN COLLECTORS IN BIOFILTRATION.
7. IMPERMEABLE LINER SHALL FOLLOW THE OUTSIDE LAYOUT OF BIOFILTRATION BASIN.
8. GEOTEXTILE FABRIC, TYPE SAS, SHALL BE WRAPPED AROUND UNDERDRAIN PIPES, INSTALLED BETWEEN UNDERDRAIN PIPES, AND BETWEEN UNDERDRAIN AND IMPERMEABLE LINER, BETWEEN STORAGE LAYER AND IMPERMEABLE LINER.



Addendum No. 01
ID 1300-13-74
Revised Sheet 121
October 15, 2015

TOTAL ESTIMATED WEIGHT = 3,270 lb

Dry Detention Basin - BILL OF MATERIALS				BAR BENT	LOCATION
MARK	COATED	NO. REQ'D	LENGTH	SERIES	
A401	X	208	2'-9"	X	FOOTING DOWELS
A402	X	35	2'-7"		WEST WALL - VERTICAL
A403	X	68	1'-9"		NORTH & SOUTH WALLS - VERTICAL
A404	X	62	2'-2"		WEST WALL & FOOTING - HORIZONTAL
A405	X	4	11'-5"		WEST WALL & FOOTING - HORIZONTAL
A406	X	4	40'-0"		EAST WALL & FOOTING - HORIZONTAL
A407	X	4	18'-4"		NORTH & SOUTH WALL & FOOTING - HORIZONTAL
A408	X	20	40'-0"		NORTH WALL & FOOTING - HORIZONTAL
A409	X	8	22'-5"		SOUTH WALL & FOOTING - HORIZONTAL
A410	X	29	2'-0"		SOUTH WALL DISCHARGE PIPE OPENING
A411	X	4	2'-0"		SLAB WELDED WIRE FABRIC
WWF	X	*	*	*	

THE FIRST DIGIT OR FIRST TWO DIGITS OF A BAR MARK INDICATES THE BAR SIZE.

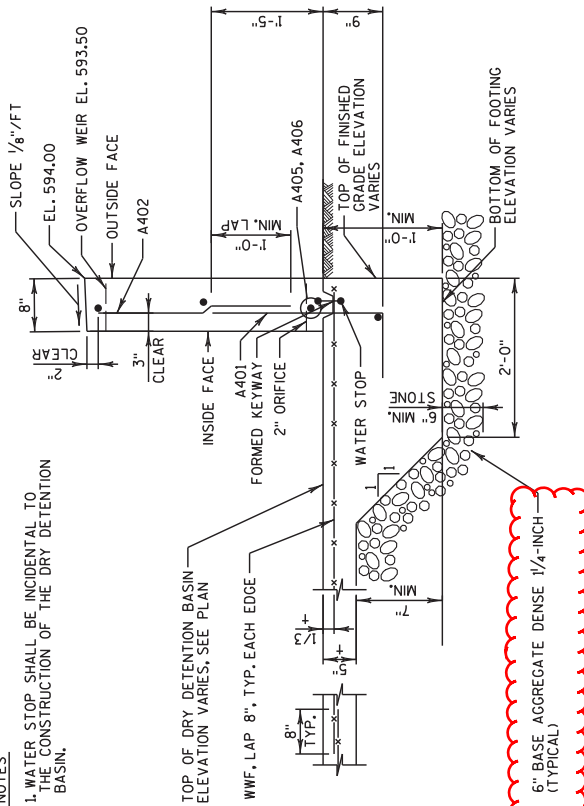
ALL DIMENSIONS IN THE BAR BENDS ARE OUT TO OUT.

* = CONCRETE SLAB PLAN AREA = 3,840 FT² (EDGE TO EDGE)

7'-6" x 29'-0" WELDED WIRE FABRIC SHEETS ASSUMED, ESTIMATED WEIGHT = 1,800 lbs

NOTES

- 1. WATER STOP SHALL BE INCIDENTAL TO THE CONSTRUCTION OF THE DRY DETENTION BASIN.



SECTION A-A

PROJECT NO: 1300-13-74

HWY: IH 794

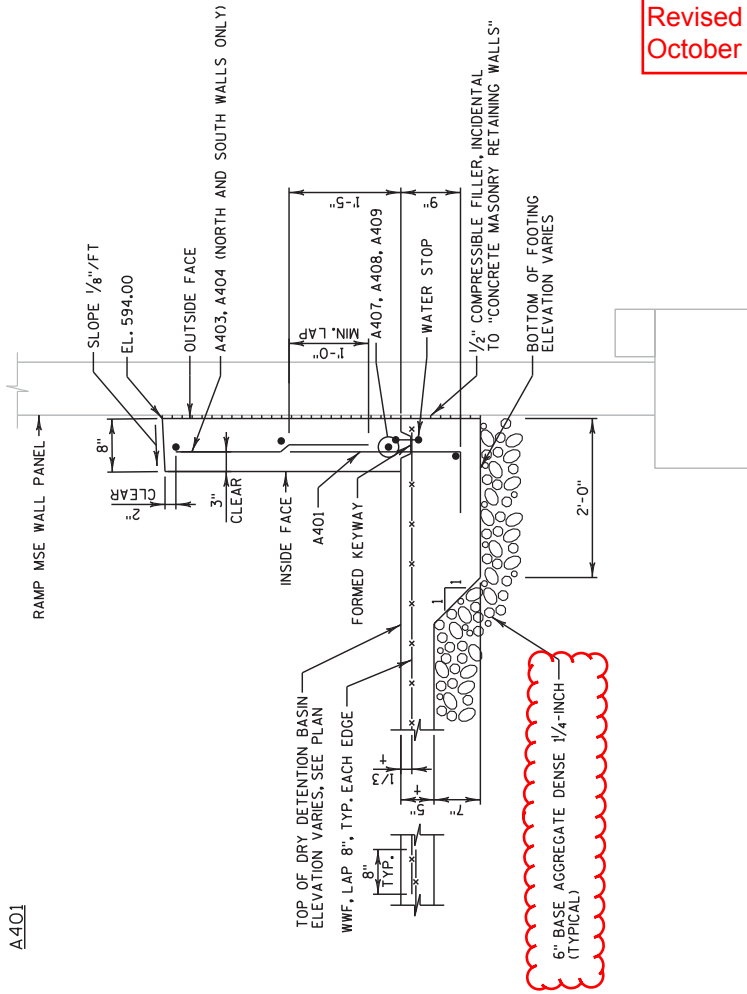
COUNTY: MILWAUKEE

CONCRETE DRY BASIN DETAILS

SHEET 124

E WISDOT/CADD SHEET 42

Addendum No. 01
ID 1300-13-74
Revised Sheet 124
October 15, 2015



SECTION B-B

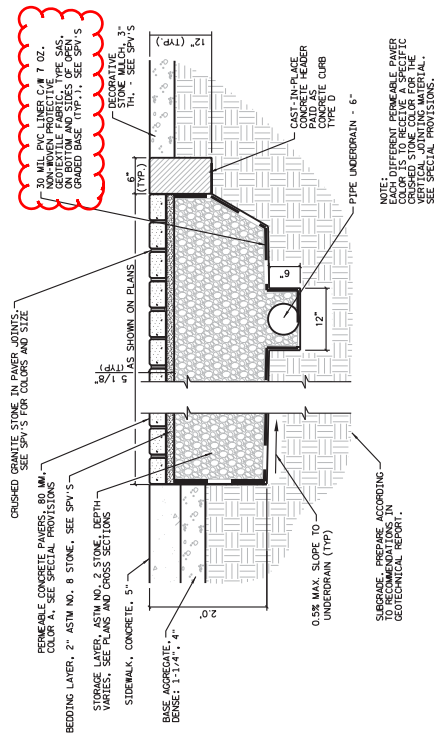
PLOT DATE : 10/13/2015

PLOT BY : 1178

PLOT SCALE : 1:1.5625

FILE NAME : 022603b-ss.cgp

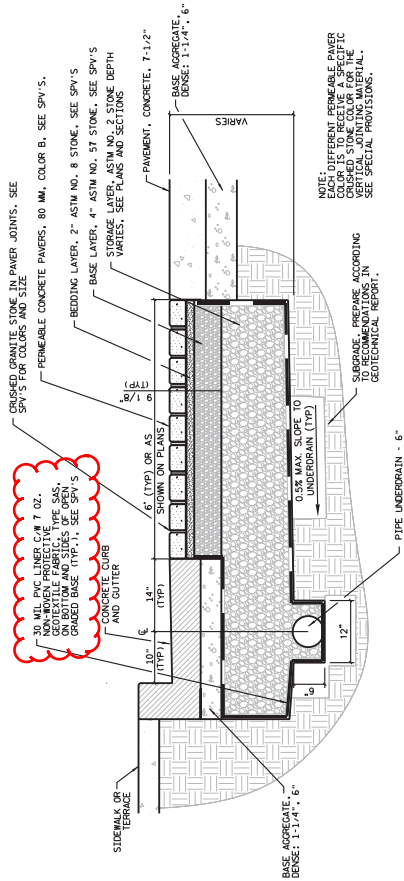
Addendum No. 01
ID 1300-13-74
Revised Sheet 167
October 15, 2015



11 TYPICAL SECTION - PERMEABLE CONCRETE PAVERS IN PLAZA

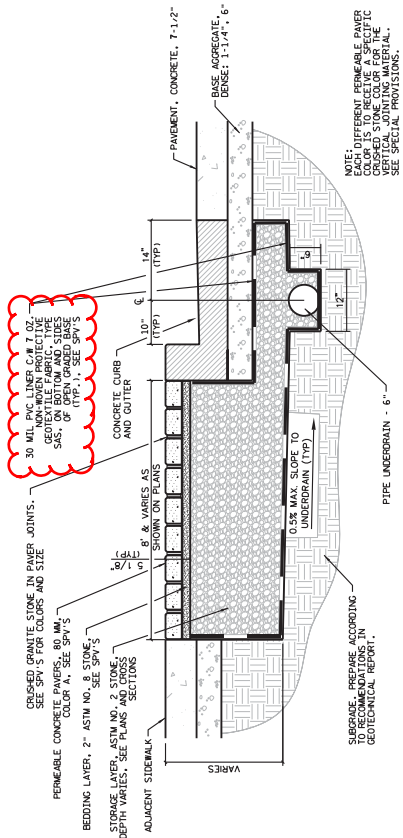
13 NOT USED

N.T.S.



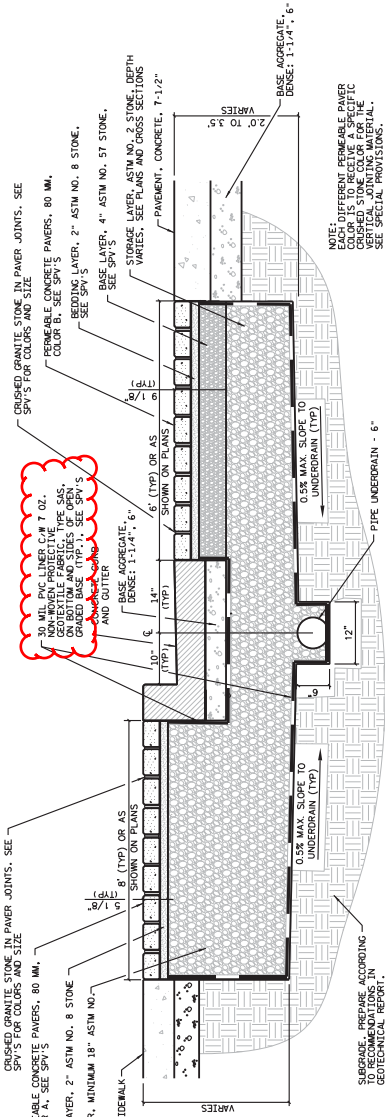
12 TYPICAL SECTION - PERMEABLE CONCRETE PAVERS IN ROADWAY

N.T.S.



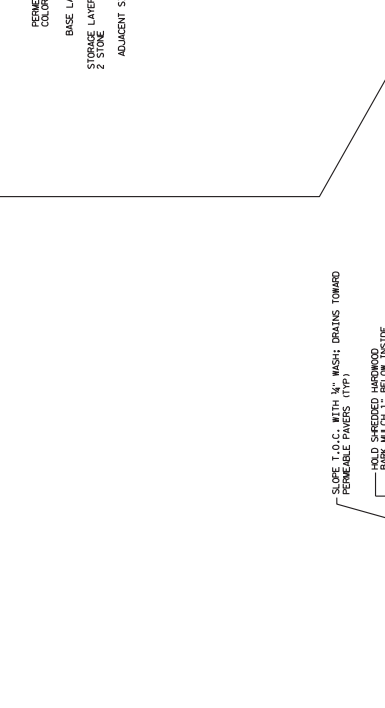
14 TYPICAL SECTION - PERMEABLE CONCRETE PAVERS IN TERRACE AREAS

N.T.S.



TYPICAL SECTION - PERMEABLE CONCRETE PAVERS IN ROADWAY AND ADJACENT TERRACE AREAS

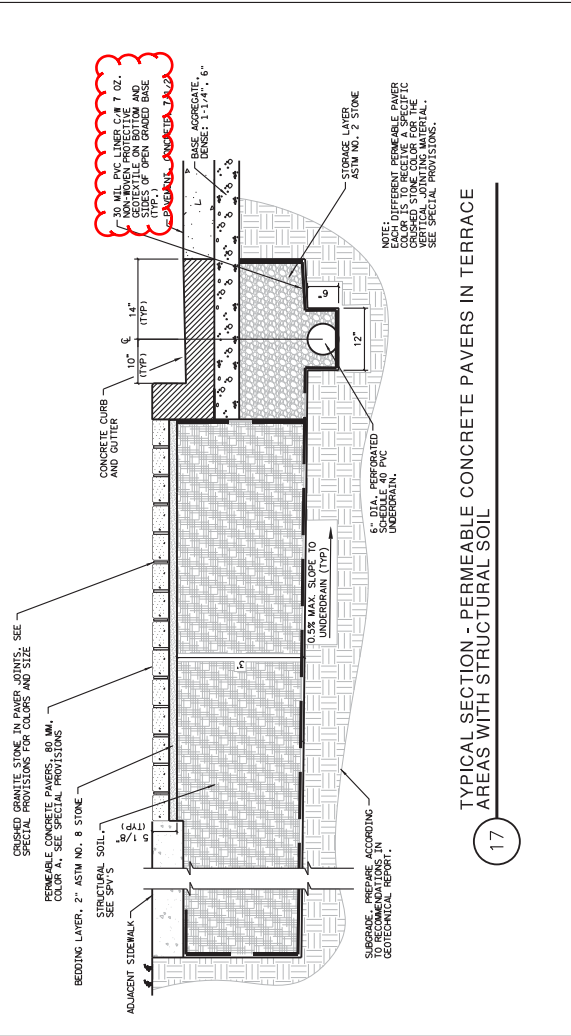
N.T.S.



TYPICAL SECTION - PERMEABLE CONCRETE PAVERS AT CAST-IN-PLACE CONCRETE SALT LIP CURB AND STRUCTURAL SOIL

N.T.S.

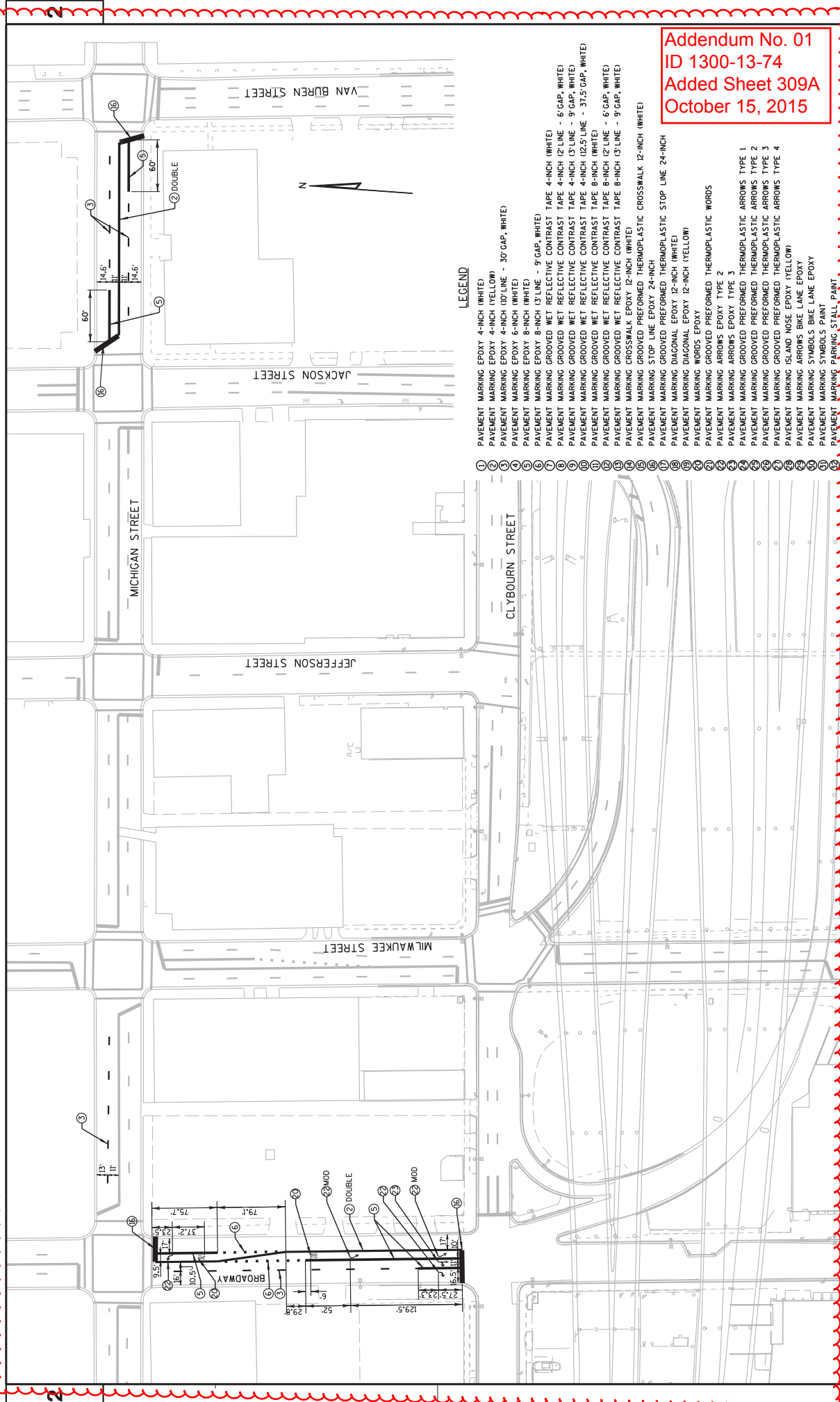
Addendum No. 01
 ID 1300-13-74
 Revised Sheet 168
 October 15, 2015



TYPICAL SECTION - PERMEABLE CONCRETE PAVERS IN TERRACE AREAS WITH STRUCTURAL SOIL

17

Addendum No. 01
ID 1300-13-74
Revised Sheet 169
October 15, 2015



Addendum No. 01
 ID 1300-13-74
 Added Sheet 309A
 October 15, 2015

LEGEND

- ① PAVEMENT MARKING EPOXY 4-INCH (WHITE)
- ② PAVEMENT MARKING EPOXY 4-INCH (YELLOW)
- ③ PAVEMENT MARKING EPOXY 4-INCH (0.1" LINE - 30" GAP, WHITE)
- ④ PAVEMENT MARKING EPOXY 6-INCH (WHITE)
- ⑤ PAVEMENT MARKING EPOXY 8-INCH (WHITE)
- ⑥ PAVEMENT MARKING EPOXY 8-INCH (3" LINE - 9" GAP, WHITE)
- ⑦ PAVEMENT MARKING GROOVED WET REFLECTIVE CONTRAST TAPE 4-INCH (2" LINE - 6" GAP, WHITE)
- ⑧ PAVEMENT MARKING GROOVED WET REFLECTIVE CONTRAST TAPE 4-INCH (12" LINE - 9" GAP, WHITE)
- ⑨ PAVEMENT MARKING GROOVED WET REFLECTIVE CONTRAST TAPE 4-INCH (13" LINE - 9" GAP, WHITE)
- ⑩ PAVEMENT MARKING GROOVED WET REFLECTIVE CONTRAST TAPE 4-INCH (12.5" LINE - 37.5" GAP, WHITE)
- ⑪ PAVEMENT MARKING GROOVED WET REFLECTIVE CONTRAST TAPE 8-INCH (WHITE)
- ⑫ PAVEMENT MARKING GROOVED WET REFLECTIVE CONTRAST TAPE 8-INCH (12" LINE - 6" GAP, WHITE)
- ⑬ PAVEMENT MARKING GROOVED WET REFLECTIVE CONTRAST TAPE 8-INCH (13" LINE - 9" GAP, WHITE)
- ⑭ PAVEMENT MARKING GROOVED WET REFLECTIVE CONTRAST TAPE 8-INCH (12" LINE - 9" GAP, WHITE)
- ⑮ PAVEMENT MARKING GROOVED WET REFLECTIVE CONTRAST TAPE 12-INCH (WHITE)
- ⑯ PAVEMENT MARKING STOP LINE EPOXY 24-INCH
- ⑰ PAVEMENT MARKING GROOVED PREFERRED THERMOPLASTIC STOP LINE 24-INCH
- ⑱ PAVEMENT MARKING DIAGONAL EPOXY 12-INCH (WHITE)
- ⑲ PAVEMENT MARKING DIAGONAL EPOXY 12-INCH (YELLOW)
- ⑳ PAVEMENT MARKING WORDS EPOXY
- ㉑ PAVEMENT MARKING GROOVED PREFERRED THERMOPLASTIC WORDS
- ㉒ PAVEMENT MARKING ARROWS EPOXY TYPE 2
- ㉓ PAVEMENT MARKING ARROWS EPOXY TYPE 3
- ㉔ PAVEMENT MARKING GROOVED PREFERRED THERMOPLASTIC ARROWS TYPE 1
- ㉕ PAVEMENT MARKING GROOVED PREFERRED THERMOPLASTIC ARROWS TYPE 2
- ㉖ PAVEMENT MARKING GROOVED PREFERRED THERMOPLASTIC ARROWS TYPE 3
- ㉗ PAVEMENT MARKING GROOVED PREFERRED THERMOPLASTIC ARROWS TYPE 4
- ㉘ PAVEMENT MARKING ISLAND NOSE EPOXY (YELLOW)
- ㉙ PAVEMENT MARKING ARROWS BIKE LANE EPOXY
- ㉚ PAVEMENT MARKING SYMBOLS BIKE LANE EPOXY
- ㉛ PAVEMENT MARKING SYMBOLS PAINT
- ㉜ PAVEMENT MARKING PARKING STALL PAINT

EARTHWORK SUMMARY

Division	From/To Station	Location	Excavation Common (1)		(1) Salvaged/Unusable Material (4)	Excavation for Available Structures (5)	Unexpanded FILL	Expanded FILL (7) Factor: 1.20	Mass Ordinate +/- (8)	Waste	Borrow	Comment:
			Cut (2)	Excavation (3)								
CATEGORY 0010	209+50 to 209+74 LE 105+00 to 110+50 LW Undistributed	Mainline Mainline	3924 3512	0 0	0 0	0 0	2207 1456	2648 1747	1276 1765	0 0	0 0	
CATEGORY 0010 SUBTOTAL			7438		0	0	3682	4395	3041	3960	0	
CATEGORY 0020	22+00 to 26+23 CL 11+00 to 14+40 LW 424+03 to 431+00 LW Chicago Street Van Buren Street Site Grading	Mainline Mainline Mainline Mainline EBS	5520 2450 14164 724 47	0 0 528 0 0	1044 0 66 208 35	0 0 3138 0 0	4406 3852 17258 0 12 2233	41 4623 363 618 8 2680	4455 18891 18891 618 4 10927	4555 18891 18891 618 4 10927	0 0 0 0 0 0	8376
CATEGORY 0020 SUBTOTAL			7208		2321	3138	59397	6431	7717	51680	60058	0
PROJECT TOTALS			66016		2321	3138	66833	10093	12112	54721	64016	0

- 1) Excavation Common is the sum of the Cut and EBS Excavation column. Item number 205.0100.
- 2) Salvaged/Unusable Pavement Material is included in Cut Volumes.
- 3) EBS Excavation to be backfilled with Breaker Run. See quantities elsewhere for item number 311.0110
- 4) Salvaged/Unusable Pavement Material
- 5) Excavation for Structures areas (where applicable) are shown on the cross section sheets. This quantity (Volume) is included and paid for as part of the Lump Sum pay item for the applicable retaining wall.
- 6) Available Material = Cut + Excavation for Structures - Salvaged/Unusable Pavement Material
- 7) Expanded Fill: Factor = 1.20; Expanded Fill = Unexpanded Fill * Fill Factor
- 8) The Mass Ordinate = or - Qty calculated for the Division. Plus quantity indicates an excess of material within the Division. Minus indicates a shortage of material within the Division.
- 9) NOTE: THE VOLUME OF MATERIALS SHOWN IN THE PLANS FOR MANAGEMENT OF SOLID WASTE AND EXCAVATION, HULLING AND DISPOSAL OF CONTAMINATED SOIL ARE ACCOUNTED FOR IN THE EXCAVATION COMMON VOLUME IN THE TABLE ABOVE.

BASE AGGREGATE

LOCATION	FROM	TO	TON	CAT. 0010	CAT. 0020	CAT. 0020
LINCOLN MEMORIAL DRIVE	12+00	14+00	1088	305.0120	310.0110	310.0110
CLYBOURN STREET	21+00	24+00	279	305.0120	310.0110	310.0110
IN 794 WB ENTRANCE RAMP	105+53	110+06	748	305.0120	310.0110	310.0110
IN 794 WB EXIT RAMP	424+58	431+30	1159	305.0120	310.0110	310.0110
IN 794 EB ENTRANCE RAMP	327+91	330+21	253	305.0120	310.0110	310.0110
IN 794 EB EXIT RAMP	204+58	209+77	2204	305.0120	310.0110	310.0110
DRY DETENTION BASIN	204+90	206+07	142	305.0120	310.0110	310.0110
PROJECT TOTALS			3092	14524	543	

CONCRETE PAVEMENT APPROACH SLAB

LOCATION	FROM	TO	OFFSET	CAT. 0020	CAT. 0010	CAT. 0020
IN 794 WB EXIT RAMP	424+59	424+06	LN	415.0410	415.0410	415.0410
IN 794 EB ENTRANCE RAMP	327+92	328+06	LS	CONCRETE PAVEMENT APPROACH SLAB	CONCRETE PAVEMENT APPROACH SLAB	CONCRETE PAVEMENT APPROACH SLAB
PROJECT TOTAL			291	291	291	

LOCATION	FROM	TO	OFFSET	CAT. 0020	CAT. 0010	CAT. 0020
LINCOLN MEMORIAL DRIVE	12+00	14+15	LW	SPV.0035.1011	SPV.0035.1011	SPV.0035.1012
CLYBOURN STREET	22+20	31+05	CL	SPV.0035.1011	SPV.0035.1011	SPV.0035.1012
IN 794 WB ENTRANCE RAMP	105+64	110+89	LW	SPV.0035.1011	SPV.0035.1011	SPV.0035.1012
IN 794 EB EXIT RAMP	204+81	210+05	LE	SPV.0035.1011	SPV.0035.1011	SPV.0035.1012
CHICAGO STREET	51+00	52+35	CH	SPV.0035.1011	SPV.0035.1011	SPV.0035.1012
PROJECT TOTALS			124	28	144	

SURVEY PROJECT

CAT. 0010	CAT. 0020
SPV.0105.1003	SPV.0105.1003
SURVEY PROJECT	SURVEY PROJECT
LS	LS
PROJECT NUMBER	
1300-13-74	0.5
	0.5
PROJECT TOTALS	0.5
	0.5

Addendum No. 01
ID 1300-13-74
Revised Sheet 452
October 15, 2015

CONCRETE PAVEMENT JOINT LAYOUT

CATEGORY 0020
SPV.0105.1004
CONCRETE PAVEMENT
JOINT LAYOUT
LS
PROJECT
1300-13-74
PROJECT TOTAL
1

PAVEMENT CLEANUP PROJECT

CATEGORY 0020
SPV.0105.1005
PAVEMENT CLEANUP
PROJECT
LS
PROJECT
1300-13-74
PROJECT TOTAL
1

GEOTECHNICAL INSTRUMENTATION

CATEGORY 0010
SPV.0105.1006
GEOTECHNICAL
INSTRUMENTATION
LS
PROJECT
1300-13-74
PROJECT TOTAL
1

REMOVING OVERHEAD SIGN SUPPORT

CATEGORY 0020
SPV.0105.1007
REMOVING OVERHEAD
SIGN SUPPORT
S-40-101
LS
LOCATION
STATION
LINCOLN MEMORIAL DRIVE
31+08 LM
PROJECT TOTAL
1

PROJECT NO: 1300-13-74

HWY: IH 794

COUNTY: MILWAUKEE

MISCELLANEOUS QUANTITIES

SHEET 452

E

Addendum No. 01
 ID 1300-13-74
 Revised Sheet 890
 October 15, 2015

STATION	Real Station	Distance	AREA (SF)		Incremental Vol (CY) (Unadjusted)			Cumulative Vol (CY)		Mass Ordinate
			Cut	Salvaged/Unusable Pavement Material	Fill	Cut	Salvaged/Unusable Pavement Material	Fill	Cut 1.00	
204+40.00	20440									
204+50.00	20450	10	543	0	12	0	0	201	0	0
205+00.00	20500	50	543	0	189	0	186	942	5	196
205+50.00	20550	50	237	0	741	0	741	229	229	714
206+00.00	20600	50	185	0	359	0	359	113	113	389
206+50.00	20650	50	185	0	218	0	218	1768	1768	613
207+00.00	20700	50	202	0	379	0	379	2125	1720	405
207+50.00	20750	50	178	0	287	0	468	2476	2244	233
208+00.00	20800	50	75	0	185	0	437	2665	2548	117
208+50.00	20850	50	77	0	88	0	253	2975	2647	328
209+00.00	20900	50	158	0	1	0	83	3322	2648	674
209+50.00	20950	50	216	0	0	0	346	3738	2648	1090
209+74.00	20974	24	233	0	0	0	416	3924	2648	1276
			186	0	0	0	186			
Column totals			3924	0	2207					

Note: No deduction from cut volume has been taken for structure excavation.

STATION	Real Station	Distance	AREA (SF)		Incremental Vol (CY) (Unadjusted)			Cumulative Vol (CY)		Mass Ordinate
			Cut	Salvaged/Unusable Pavement Material	Fill	Cut	Salvaged/Unusable Pavement Material	Fill	Cut 1.00	
105+40.00	10540									
105+50.00	10550	10	600	0	133	0	49	222	59	163
106+00.00	10600	50	290	0	133	0	157	1046	247	799
106+50.00	10650	50	285	0	36	0	63	1579	323	1256
107+00.00	10700	50	258	0	32	0	62	2081	397	1684
107+50.00	10750	50	166	0	300	0	309	2474	788	1705
108+00.00	10800	50	141	0	197	0	386	2868	1639	1250
108+50.00	10850	50	30	0	89	0	265	2917	1742	1174
109+00.00	10900	50	30	0	0	0	86	3059	1747	1312
109+50.00	10950	50	123	0	0	0	142	3312	1747	1565
110+00.00	11000	50	151	0	0	0	254	3512	1747	1765
110+50.00	11050	50	65	0	0	0	200			
Column totals			3512	0	1456					

Note: No deduction from cut volume has been taken for structure excavation.

Addendum No. 01
 ID 1300-13-74
 Revised Sheet 891
 October 15, 2015

NR Ramp

STATION	Real Station	Distance	AREA (SF)			Incremental Vol (CY) (Unadjusted)			Cumulative Vol (CY)			Mass Ordinate				
			Cut	Salvaged/Unusable Pavement Material	Fill	Excavation for Structures	EBS	Cut	Salvaged/Unusable Pavement Material	Fill	Excavation for Structures		EBS	Cut 1.00	Expanded Fill for Structures 1.2	Excavation for Structures
424+63.00			1916	27	0	133	94	0	0	0	0	0	0	0	0	
425+00.00		37	1501	21	0	130	54	2341	33	0	180	102	2341	-98	180	2406
425+50.00		50	1084	7	0	139	53	2393	26	0	249	99	4734	-193	429	4868
426+00.00		50	1182	0	0	146	52	2098	7	0	256	97	6832	-286	693	7052
426+50.00		50	1280	0	0	153	51	1595	0	0	365	94	10285	-395	365	10679
427+00.00		50	830	0	0	189	48	1563	0	0	366	91	10285	-461	1385	10679
427+50.00		50	675	0	0	193	45	1393	0	0	322	45	11678	-504	1767	12116
428+00.00		50	278	0	0	246	0	882	0	0	374	0	12560	-492	2081	12987
428+50.00		50	220	0	0	177	0	460	0	0	391	0	13020	-465	2473	13420
429+00.00		50	177	0	0	121	0	367	0	0	276	0	13388	-427	2749	13748
429+50.00		50	138	0	0	74	0	291	0	0	180	0	13679	-378	2929	13991
430+00.00		50	108	0	0	47	0	227	0	0	112	0	13906	-330	3041	14170
430+50.00		50	69	0	0	29	0	103	0	0	70	0	14184	-341	3111	14325
431+00.00		50	14	0	0	137	0	96	0	0	133	0	14184	-141	3118	14260
			Column totals			14184	66	304	3138	528						

Note: The Excavation for Structures volume identified in the table above is not included in the Cut volume shown. Refer to Earthwork Summary table and cross sections for additional information.

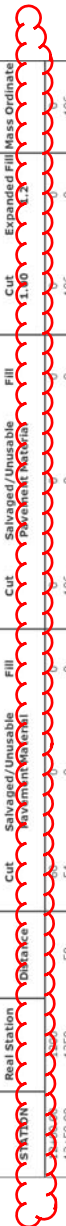
Chybourg Street

STATION	Real Station	Distance	AREA (SF)			Incremental Vol (CY) (Unadjusted)			Cumulative Vol (CY)			Mass Ordinate				
			Cut	Salvaged/Unusable Pavement Material	Fill	Cut	Salvaged/Unusable Pavement Material	Fill	Cut 1.00	Expanded Fill for Structures 1.2	Excavation for Structures					
234+00.00			189	52	2	133	54	0	0	0	0	0	0	0	0	
234+50.00		50	176	51	1	137	53	375	96	3	180	102	375	4	180	275
235+00.00		50	138	51	1	130	52	338	95	3	173	7	514	7	514	375
235+50.00		50	185	51	1	179	52	94	27	1	806	8	806	8	806	581
236+00.00		50	217	52	2	268	53	268	69	2	1074	11	1074	11	1074	777
236+50.00		50	240	52	3	367	54	367	96	4	1441	16	1441	16	1441	1043
237+00.00		50	204	51	2	204	42	156	42	1	1597	18	1597	18	1597	1155
237+50.00		50	181	52	0	156	42	200	53	0	1796	18	1796	18	1796	1301
238+00.00		50	186	51	0	186	42	186	52	0	1982	18	1982	18	1982	1495
238+50.00		50	168	52	0	168	42	168	53	0	2150	18	2150	18	2150	1649
239+00.00		50	260	54	0	260	42	260	97	0	2733	18	2733	18	2733	2046
239+50.00		50	272	53	1	272	43	602	98	1	3413	20	3413	20	3413	2625
240+00.00		50	165	43	8	165	30	404	89	9	3817	30	3817	30	3817	2931
240+50.00		50	146	57	6	146	37	104	34	5	3921	36	3921	36	3921	2995
241+00.00		50	312	272	0	312	27	272	44	4	4193	40	4193	40	4193	2995
241+50.00		50	187	17	0	187	8	138	8	0	4330	40	4330	40	4330	3348
242+00.00		50	280	17	0	280	17	348	24	0	4678	40	4678	40	4678	3671
242+50.00		50	280	17	0	280	17	348	24	0	4922	40	4922	40	4922	4324
243+00.00		50	290	17	0	290	17	358	32	0	5180	41	5180	41	5180	4362
243+50.00		50	114	17	1	114	8	63	8	0	5495	41	5495	41	5495	4417
244+00.00		50	112	17	1	112	7	46	7	0	5540	41	5540	41	5540	4455
244+50.00		50	112	17	1	112	7	46	7	0	5540	41	5540	41	5540	4455
			Column totals			5540	1044	34								

Addendum No. 01
 ID 1300-13-74
 Revised Sheet 892
 October 15, 2015

Lincoln Memorial Drive & SB Ramp

Station	Real Station	Area (SF)	Incremental Vol (CY) (Unadjusted)		Cumulative Vol (CY)	
			Cut	Fill	Cut	Fill
12+50.00	1250	54	106	0	106	0
13+00.00	1300	50	100	0	206	0
13+50.00	1350	50	94	0	300	0
14+00.00	1400	73	39	0	339	0
14+50.00	1450	90	152	0	491	0
15+00.00	1500	160	232	0	723	0
15+50.00	1550	130	259	0	982	0
16+00.00	1600	135	246	0	1228	0
16+50.00	1650	129	238	0	1466	0
17+00.00	1700	50	218	0	1684	0
17+50.00	1750	50	203	0	1887	0
18+00.00	1800	129	293	0	2180	0
18+50.00	1850	60	175	0	2355	0
19+00.00	1900	122	168	0	2523	0
19+50.00	1950	128	231	0	2754	0
20+00.00	2000	173	278	0	3032	0
20+50.00	2050	50	346	0	3378	0
21+00.00	2100	195	367	0	3745	0
21+50.00	2150	200	355	0	4100	0
22+00.00	2200	186	359	0	4459	0
22+50.00	2250	186	359	0	4818	0
23+00.00	2300	50	424	0	5242	0
23+50.00	2350	33	281	0	5523	0
24+00.00	2400	36	63	0	5586	0
24+50.00	2450	744	11	57	5697	57
25+00.00	2500	852	41	722	6005	119
25+50.00	2550	1051	140	1479	6145	194
26+00.00	2600	1129	1762	0	7907	194
26+50.00	2650	1129	2058	0	9965	194
27+00.00	2700	906	1786	0	11751	194
27+50.00	2750	50	1481	0	13232	194
28+00.00	2800	609	1206	0	14438	194
28+50.00	2850	873	1373	0	15811	194
29+00.00	2900	50	1566	0	17377	194
29+50.00	2950	575	1290	0	18667	194
30+00.00	3000	74	602	0	19269	194
30+50.00	3050	18	419	0	19688	194
31+00.00	3100	18	419	0	20107	194
31+50.00	3150	12	28	0	20135	194
32+00.00	3200	86	91	0	20226	194
32+50.00	3250	74	149	0	20375	194
33+00.00	3300	114	174	0	20549	194
33+50.00	3350	122	218	0	20767	194
34+00.00	3400	104	209	0	20976	194
34+50.08	3445	106	175	0	21151	194
Column totals			24477	970	25447	3852



Addendum No. 01
 ID 1300-13-74
 Revised Sheet 893
 October 15, 2015

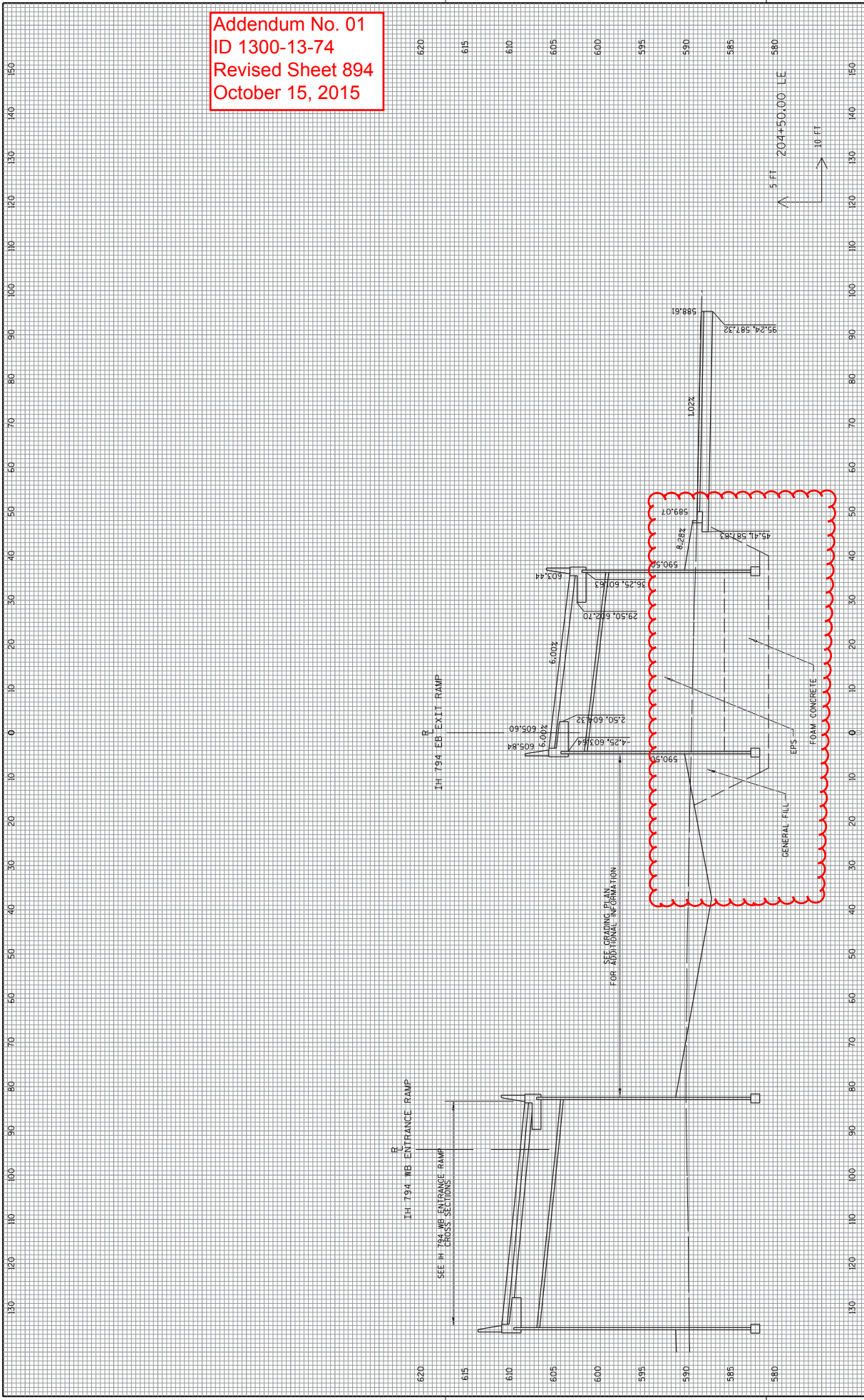
Chicago Street

Real Station	AREA (SF)		Incremental Vol (CY) (Unadjusted)			Cumulative Vol (CY)			
	Cut	Salvaged/Unusable	Fill	Cut	Salvaged/Unusable	Fill	Cut	Expanded Fill	Mass Ordinate
51+50.00	196	38	0	161	70	0	161	0	31
51+50.00	196	37	0	208	52	0	208	0	238
52+00.00	190	37	0	84	16	0	444	0	306
52+50.00	112	37	0	280	68	0	724	0	518
				724	206	0			

Van Buren Street

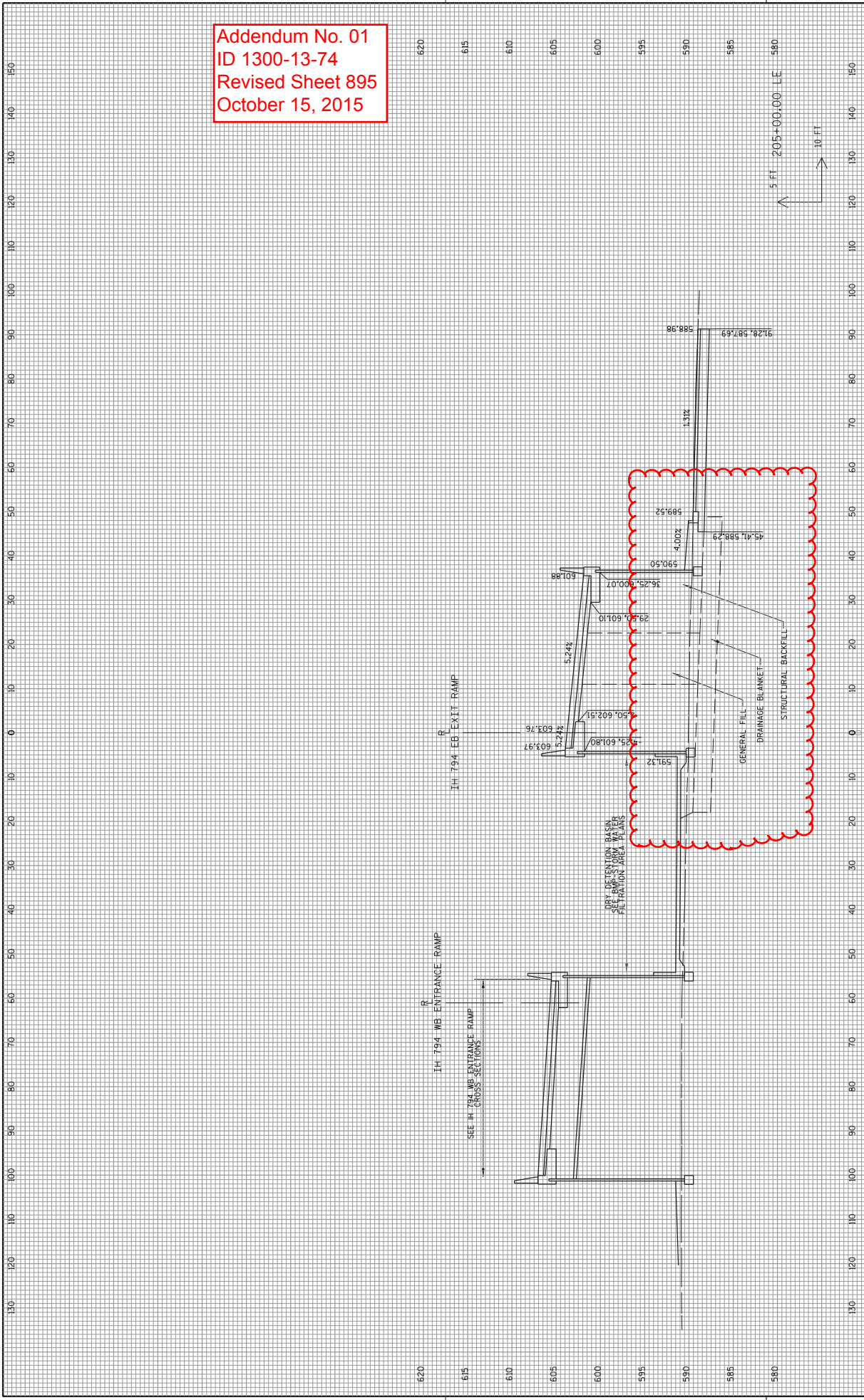
Real Station	AREA (SF)		Incremental Vol (CY) (Unadjusted)			Cumulative Vol (CY)			
	Cut	Salvaged/Unusable	Fill	Cut	Salvaged/Unusable	Fill	Cut	Expanded Fill	Mass Ordinate
63+00.00	14	9	0	16	17	0	16	0	-1
63+50.00	17	9	6	29	17	6	44	7	4
63+54.00	4	9	6	2	1	1	47	8	4
Column totals				47	35	7			

Addendum No. 01
 ID 1300-13-74
 Revised Sheet 894
 October 15, 2015

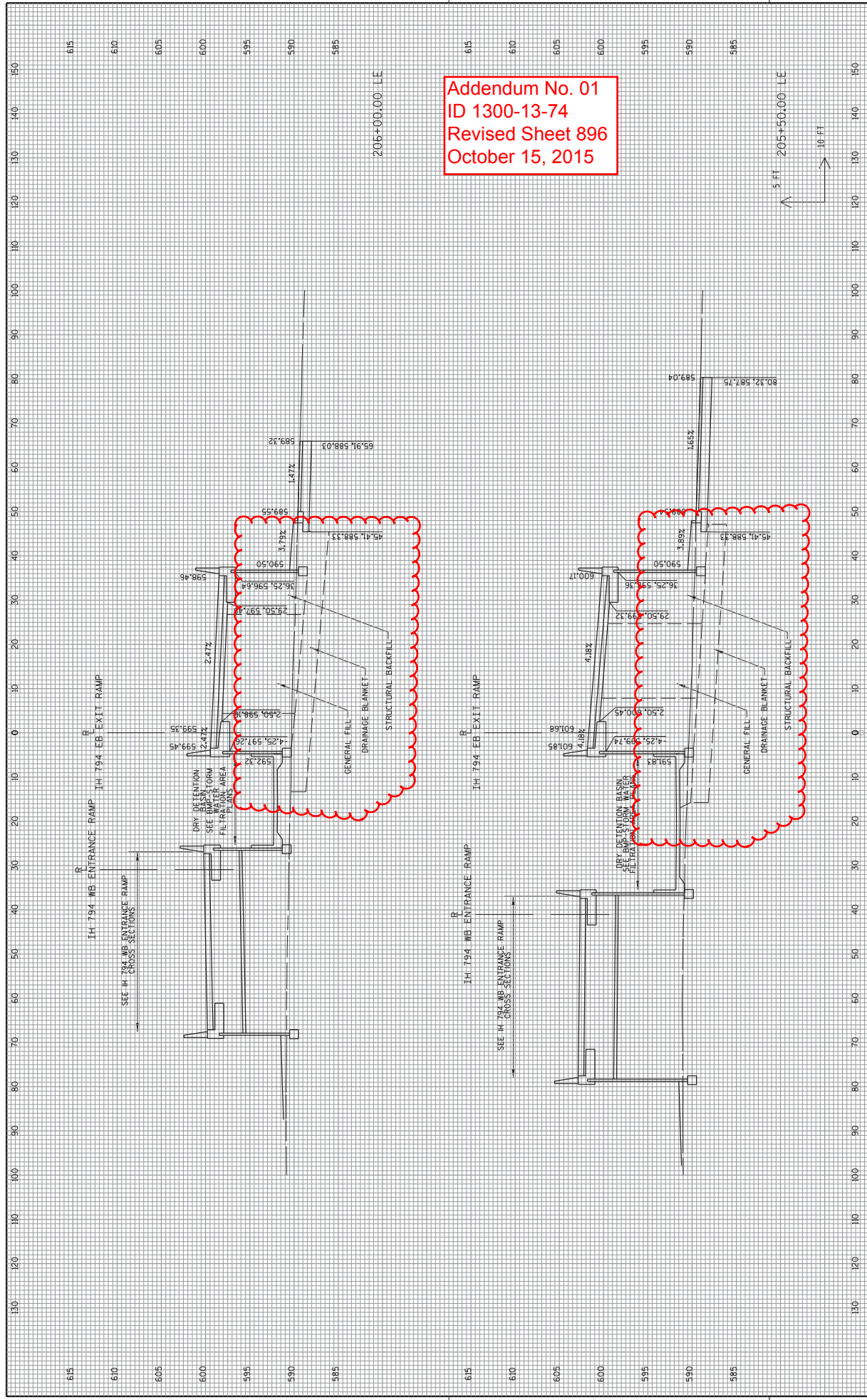


PROJECT NO: 1300-13-74
 COUNTY: MILWAUKEE
 HWY: IH 794
 SHEET 894
 CROSS SECTIONS: IH 794 EB EXIT RAMP
 PLOT BY: GRAEF
 PLOT DATE: 10/9/2015
 PLOT SCALE: 20,000 SF / 1" = 100 FT
 WISDOT/CADD SHEET 21

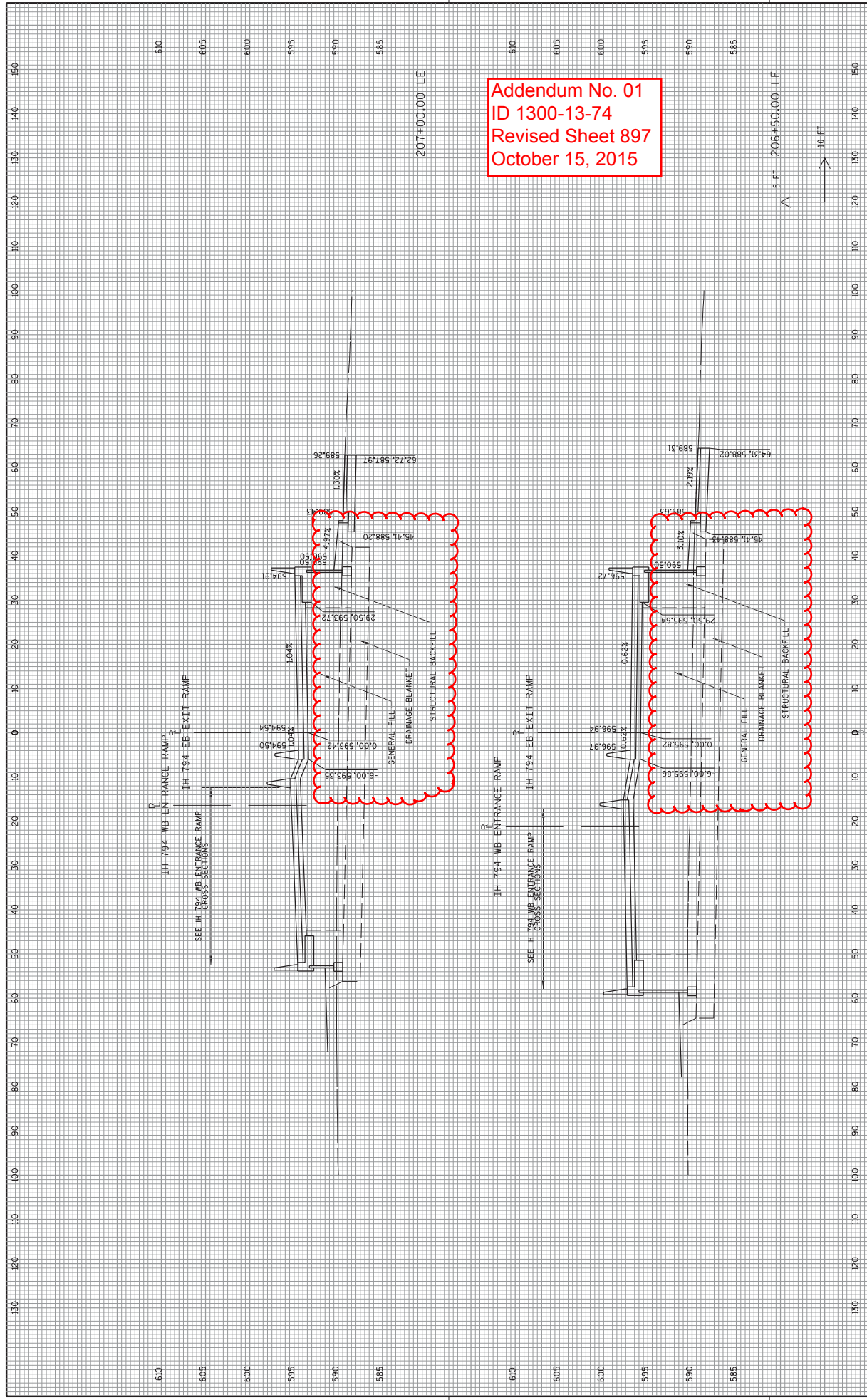
Addendum No. 01
 ID 1300-13-74
 Revised Sheet 895
 October 15, 2015



PROJECT NO: 1300-13-74
 COUNTY: MILWAUKEE
 HWY: IH 794
 CROSS SECTIONS: IH 794 EB EXIT RAMP
 SHEET 895
 FILE NAME : L:\Jobs2013\20131794\CAD\Site\Gpr\00\090201_xs_Ramp.E.dgn
 PLOT BY : GRAEF
 PLOT DATE : 10/9/2015
 PLOT SCALE : 20,0000 sf / in.
 WISDOT/CADD SHEET 21

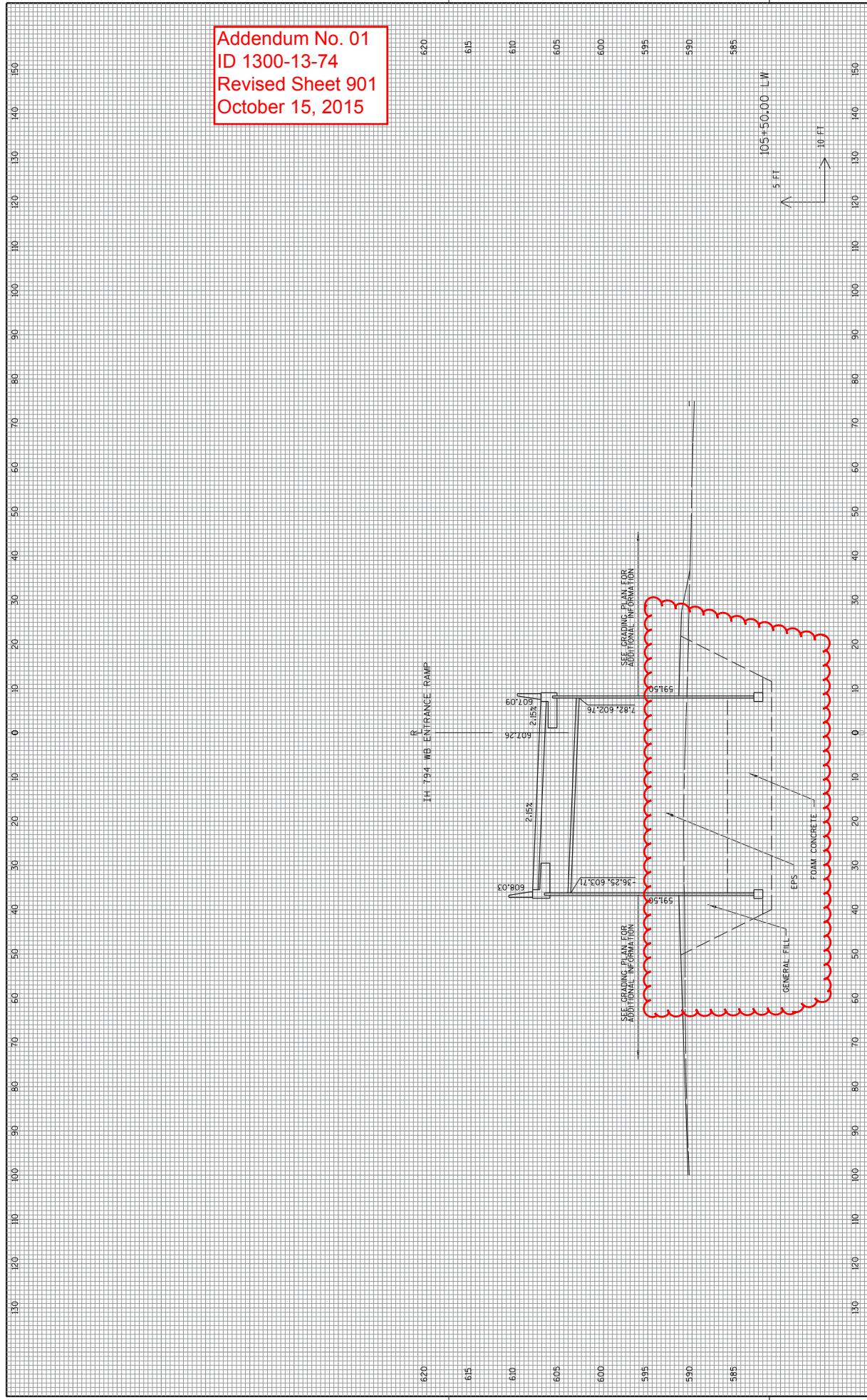


Addendum No. 01
 ID 1300-13-74
 Revised Sheet 896
 October 15, 2015

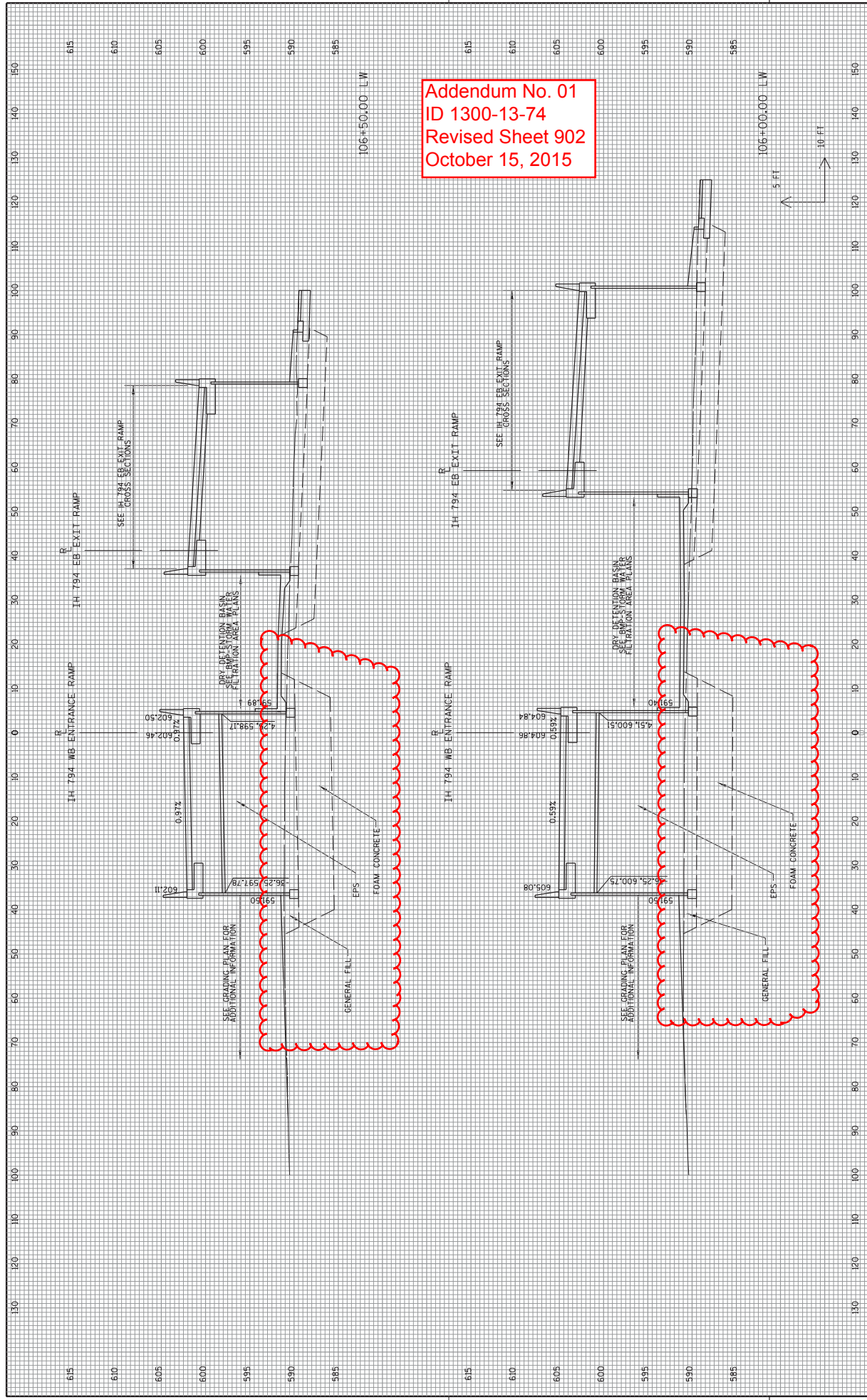


Addendum No. 01
 ID 1300-13-74
 Revised Sheet 897
 October 15, 2015

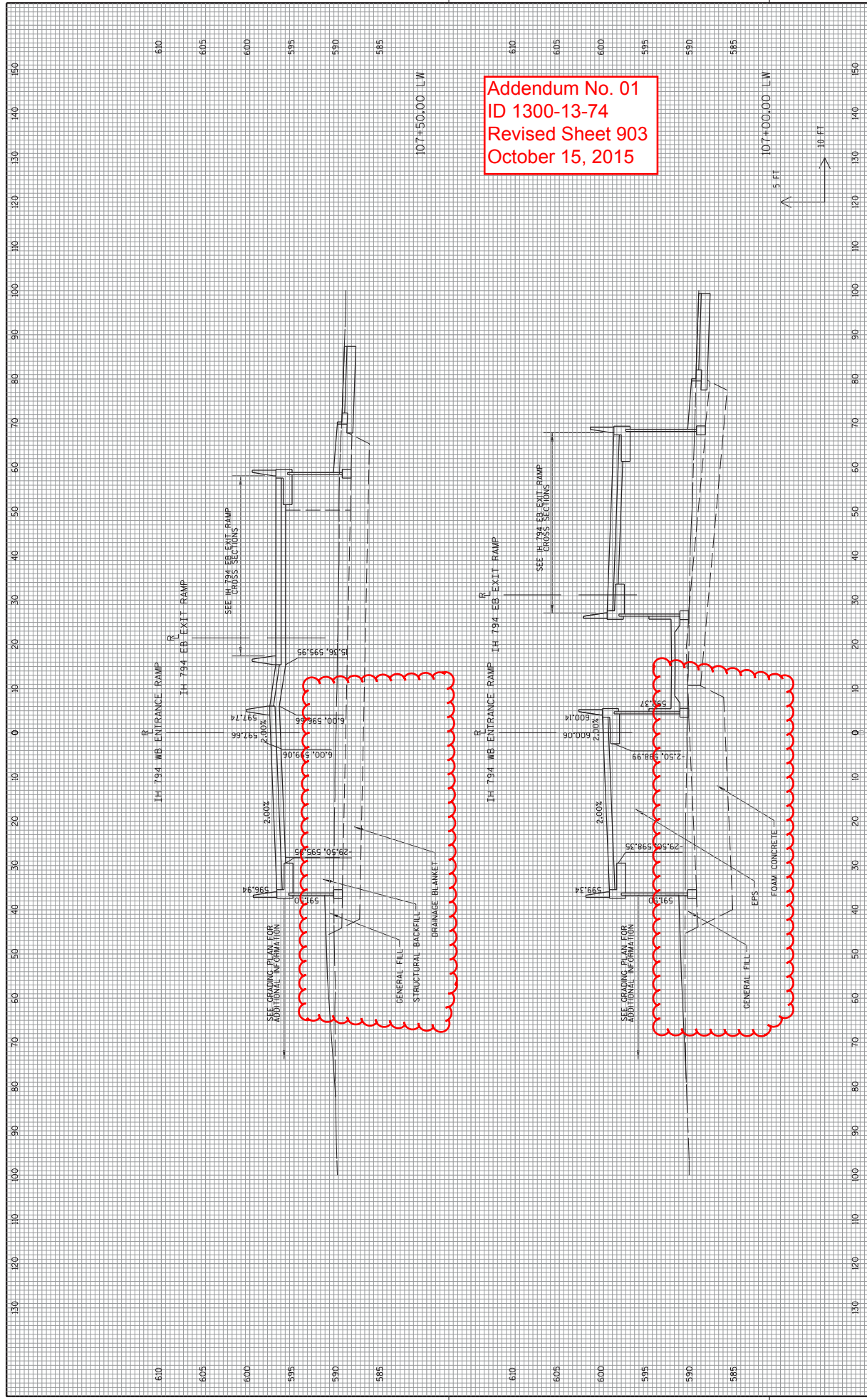
Addendum No. 01
 ID 1300-13-74
 Revised Sheet 901
 October 15, 2015



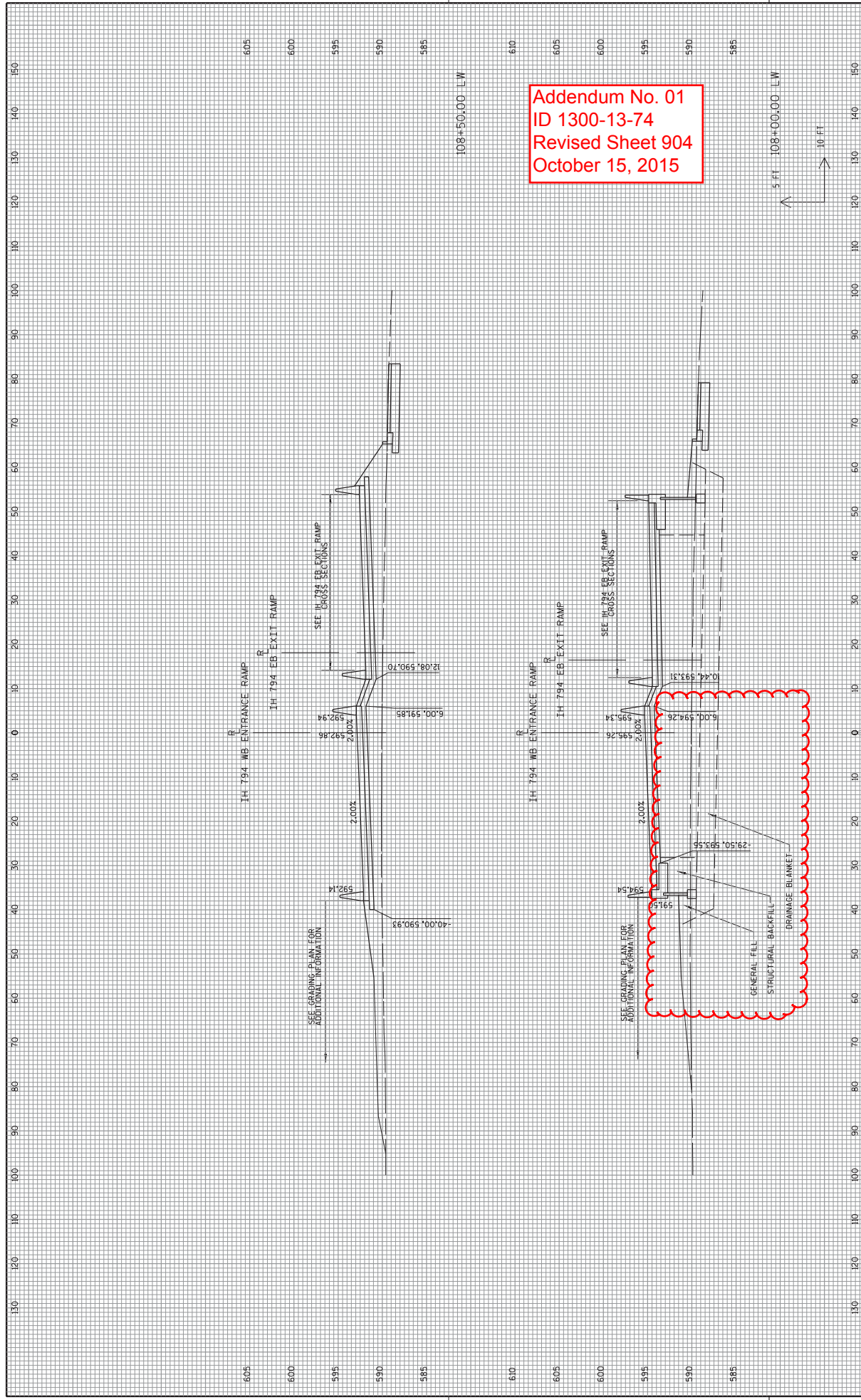
PROJECT NO: 1300-13-74
 COUNTY: MILWAUKEE
 HWY: IH 794
 CROSS SECTIONS: IH 794 WB ENTRANCE RAMP
 SHEET 901 E
 FILE NAME : L:\Jobs2013\20131794\CAD\SI\T&E\Gpr\00\090202_xs_Ramp.W_dgn
 PLOT DATE : 10/9/2015
 PLOT NAME :
 PLOT SCALE : 20,0000 sf / in.
 WISDOT/CADD SHEET 21



Addendum No. 01
 ID 1300-13-74
 Revised Sheet 902
 October 15, 2015



Addendum No. 01
 ID 1300-13-74
 Revised Sheet 903
 October 15, 2015



SCHEDULE OF ITEMS

REVISED:

CONTRACT:
20151110011PROJECT(S):
1300-13-74FEDERAL ID(S):
N/A

CONTRACTOR : _____

LINE NO	ITEM DESCRIPTION	APPROX. QUANTITY AND UNITS	UNIT PRICE		BID AMOUNT	
			DOLLARS	CTS	DOLLARS	CTS
0510	204.9060.S Removing (item description) 0002. TRAFFIC CONTROL SIGNS FIXED MESSAGE LEFT IN PLACE BY OTHERS	6.000 EACH
0520	204.9090.S Removing (item description) 0003. CONCRETE BARRIER TEMPORARY PRECAST LEFT IN PLACE BY OTHERS	87.500 LF
0530	205.0100 Excavation Common	74,140.000 CY
0540	205.0501.S Excavation, Hauling, and Disposal of Petroleum Contaminated Soil	9,369.000 TON
0550	205.2000.S Settlement Gauges	2.000 EACH
0560	206.1000 Excavation for Structures Bridges (structure) 2001. B-40-915	LUMP	LUMP	.	.	.
0570	206.1000 Excavation for Structures Bridges (structure) 2002. B-40-916	LUMP	LUMP	.	.	.
0590	213.0100 Finishing Roadway (project) 0001. 1300-13-74	1.000 EACH
0600	305.0120 Base Aggregate Dense 1 1/4-Inch *** ***	17,616.000 TON

SCHEDULE OF ITEMS

REVISED:

CONTRACT:
20151110011PROJECT(S):
1300-13-74FEDERAL ID(S):
N/A

CONTRACTOR : _____

LINE NO	ITEM DESCRIPTION	APPROX. QUANTITY AND UNITS	UNIT PRICE		BID AMOUNT	
			DOLLARS	CTS	DOLLARS	CTS
0610	310.0110 Base Aggregate Open Graded	543.000 TON
0620	311.0110 Breaker Run	14,624.000 TON
0630	415.0070 Concrete Pavement 7-Inch **p**	5,339.000 SY
0640	415.0075 Concrete Pavement 7 1/2-Inch **p**	8,698.000 SY
0650	415.0080 Concrete Pavement 8-Inch **p**	15,760.000 SY
0660	415.0085 Concrete Pavement 8 1/2-Inch **p**	323.000 SY
0670	415.0210 Concrete Pavement Gaps	10.000 EACH
0680	415.0410 Concrete Pavement Approach Slab **p**	291.000 SY
0690	416.0170 Concrete Driveway 7-Inch	1,016.000 SY
0700	416.0610 Drilled Tie Bars	77.000 EACH
0710	416.0620 Drilled Dowel Bars	64.000 EACH

SCHEDULE OF ITEMS

REVISED:

CONTRACT:
20151110011PROJECT(S):
1300-13-74FEDERAL ID(S):
N/A

CONTRACTOR : _____

LINE NO	ITEM DESCRIPTION	APPROX. QUANTITY AND UNITS	UNIT PRICE		BID AMOUNT	
			DOLLARS	CTS	DOLLARS	CTS
0720	416.1010 Concrete Surface Drains	4.000 CY	.		.	
0730	440.4410.S Incentive IRI Ride	5,400.000 DOL	1.00000		5400.00	
0740	455.0605 Tack Coat	168.000 GAL	.		.	
0750	465.0105 Asphaltic Surface	1,318.000 TON	.		.	
0760	465.0125 Asphaltic Surface Temporary	407.000 TON	.		.	
0770	465.0310 Asphaltic Curb	270.000 LF	.		.	
0780	502.0100 Concrete Masonry Bridges **p**	927.000 CY	.		.	
0790	502.0717.S Crack Sealing Epoxy	30.000 LF	.		.	
0800	502.3100 Expansion Device (structure) 2001. B-40-400-6D	LUMP	LUMP		.	
0810	502.3100 Expansion Device (structure) 2002. B-40-915	LUMP	LUMP		.	
0820	502.3100 Expansion Device (structure) 2003. B-40-916	LUMP	LUMP		.	

SCHEDULE OF ITEMS

REVISED:

CONTRACT:
20151110011PROJECT(S):
1300-13-74FEDERAL ID(S):
N/A

CONTRACTOR : _____

LINE NO	ITEM DESCRIPTION	APPROX. QUANTITY AND UNITS	UNIT PRICE		BID AMOUNT	
			DOLLARS	CTS	DOLLARS	CTS
0830	502.3200 Protective Surface Treatment ***	7,498.000 SY
0840	502.3210.S Pigmented Protective Surface Treatment	1,714.000 SY
0850	502.6500 Protective Coating Clear	3.000 GAL
0860	503.0136 Prestressed Girder Type I 36-Inch ***	354.000 LF
0870	504.0500 Concrete Masonry Retaining Walls ***	1,198.000 CY
0880	505.0405 Bar Steel Reinforcement HS Bridges ***	52,550.000 LB
0890	505.0605 Bar Steel Reinforcement HS Coated Bridges ***	447,560.000 LB
0900	505.0615 Bar Steel Reinforcement HS Coated Retaining Walls ***	132,350.000 LB
0910	505.0800.S Bar Steel Reinforcement HS Stainless Structures ***	1,520.000 LB
0920	506.0605 Structural Steel HS ***	1,391,929 LB

SCHEDULE OF ITEMS

REVISED:

CONTRACT:
20151110011PROJECT(S):
1300-13-74FEDERAL ID(S):
N/A

CONTRACTOR : _____

LINE NO	ITEM DESCRIPTION	APPROX. QUANTITY AND UNITS	UNIT PRICE		BID AMOUNT	
			DOLLARS	CTS	DOLLARS	CTS
5680	SPV.0165 Special 1002. PERMEABLE CONCRETE PAVERS - 80MM, COLOR A	7,503.000 SF	.		.	
5690	SPV.0165 Special 1003. PERMEABLE CONCRETE PAVERS - 80MM, COLOR B	4,366.000 SF	.		.	
5700	SPV.0165 Special 1004. IRRIGATION ZONES - DRIP	41,760.000 SF	.		.	
5710	SPV.0165 Special 1005. IRRIGATION ZONES - SPRAY	5,740.000 SF	.		.	
5720	SPV.0165 Special 2001. PRESTRESSED PRECAST CONCRETE WALL PANEL **P**	12,386.000 SF	.		.	
5730	SPV.0165 Special 2002. WALL CONCRETE PANEL MECHANICALLY STABILIZED EARTH LRFD/QMP **P**	17,130.000 SF	.		.	
5740	SPV.0165 Special 2003. WALL WIRE FACED MECHANICALLY STABILIZED EARTH LRFD/QMP **P**	5,722.000 SF	.		.	
5750	SPV.0180 Special 1001. SHREDDED HARDWOOD BARK MULCH	3,672.000 SY	.		.	
5760	SPV.0195 Special 1001. MANAGEMENT OF SOLID WASTE	28,553.000 TON	.		.	
5770	SPV.0105 Special 1007. Removing Overhead Sign Support S-40-191	LUMP	LUMP		.	
	SECTION 0001 TOTAL				.	
	TOTAL BID				.	