



Wisconsin Department of Transportation

November 4, 2015

Division of Transportation Systems Development

Bureau of Project Development
4802 Sheboygan Avenue, Rm 601
P O Box 7916
Madison, WI 53707-7916

Telephone: (608) 266-1631
Facsimile (FAX): (608) 266-8459

NOTICE TO ALL CONTRACTORS:

Proposal #19: 1420-22-71, WISC 2015 578
Fond du Lac Bypass
CTH V Interchange
USH 151
Fond du Lac County

Letting of November 10, 2015

This is Addendum No. 01, which provides for the following:

Special Provisions

Revised Special Provisions	
Article No.	Description
3	Prosecution and Progress

Added Special Provisions	
Article No.	Description
57	Other Contracts

Schedule of Items

Revised Bid Item Quantities					
Bid Item	Item Description	Unit	Old Quantity	Revised Quantity	Proposal Total
601.0409	Concrete Curb and Gutter 30-inch Type A	LF	1,111	-229	882
601.0452	Concrete Curb and Gutter Integral 30-inch Type D	LF	432	231	663

Plan Sheets

Revised Plan Sheets	
Plan Sheet	Plan Sheet Title (brief description of changes to sheet)
40	Paving Detail – CTH V – added label for CGI-30D
46	Paving Detail – Frontage Road – added label for CGI-30D
266	MQ – Concrete Curb and Gutter Items – revised quantity for 601.0409 and 601.0452

Added Plan Sheets	
Plan Sheet	Plan Sheet Title (brief description of why sheet was added)
22A	Construction Detail – PVD Location Detail

The responsibility for notifying potential subcontractors and suppliers of these changes remains with the prime contractor.

Sincerely,

Mike Coleman

Proposal Development Specialist
Proposal Management Section

ADDENDUM NO. 01

1420-22-71

November 4, 2015

Special Provisions

3. Prosecution and Progress.

Replace entire article language with the following:

Begin work within ten calendar days after the engineer issues a written notice to do so.

Provide the start date to the engineer in writing within a month after executing the contract but at least 14 calendar days before the preconstruction conference. Upon approval, the engineer will issue the notice to proceed within ten calendar days before the approved start date.

To revise the start date, submit a written request to the engineer at least two weeks before the intended start date. The engineer will approve or deny that request based on the conditions cited in the request and its effect on the department's scheduled resources.

The contract time for completion is based on the expedited work schedule and may require extraordinary forces and equipment.

Do not initiate Stage V3 closure of the southbound USH 151 left turn lane to CTH V before March 14, 2016.

Definitions

A weekday is a calendar day from Monday 6:00 AM to Friday 12:00 PM.

A weekend day is a calendar day from Friday 12:01 PM to Monday 5:59 AM.

Interim Liquidated Damages

USH 45

Close USH 45 for a maximum of 30 calendar days to construct the intersection of Frontage Road with USH 45. Do not reopen until completing the following work: HMA pavement, pavement marking, and permanent signing.

If the contractor fails to complete the work necessary to reopen USH 45 to traffic within 30 calendar days, the department will assess the contractor \$1,500 in interim liquidated damages for each calendar day the contract work remains incomplete beyond 30 calendar days. An entire calendar day will be charged for any period of time within a calendar day that the road remains closed beyond 12:01 AM.

If contract time expires prior to completing all work specified in the contract, additional liquidated damages will be fixed according to standard spec 108.11.

CTH V Construction Activities

The control of construction will be based on the results of monitoring geotechnical instrumentation in the field. Do not begin construction until instrumentation indicates that excess pore water pressures have been significantly dissipated and significant consolidation of the underlying soft soils has occurred in the bridge approach fills as determined by the department. Pre-fabricated vertical drains (PVDs) were installed. The PVDs were installed under the 1420-23-71 contract and are shown on the plans for information only. These conditions are anticipated by March 14, 2016.

After the written approval of the project engineer, construction can begin. Field verify existing in place subgrade elevations prior to placing additional borrow. The project engineer may stop construction operations at any time if instrumentation monitoring indicates impending movement or instability of the embankment fill.

Cooperate with the department and its representatives in the monitoring and protection of the geotechnical instrumentation in the embankment. Conduct construction activities such that the department has reasonable access to the terminal boxes and other geotechnical instrumentation. Take all necessary precautions to ensure that all geotechnical instrumentation is not damaged, displaced, or misaligned by contractor activities. The geotechnical instrumentation is approximately located as follows:

Piezometer (PZ): A vibrating wire piezometer constructed in a borehole.

Station	Offset
129'NB'+30	23.5' RT
129'NB'+30	23.5' RT
133'NB'+40	23.5' RT
133'NB'+40	23.5' RT
286'VAA'+00	7.5' LT
286'VAA'+00	7.5' LT

Settlement Gauges

Station	Offset
129'NB'+30	23.5' RT
133'NB'+40	23.5' RT
286'VAA'+00	7.5' LT

If a geotechnical instrument is damaged by construction operations, the contractor shall pay for the repair of the geotechnical instrument, or if necessary, the replacement and installation of a new geotechnical instrument.

Clearing and Grubbing

Northern Long-eared Bats (*Myotis septentrionalis*) (NLEB) have potential to inhabit the project limits.

There shall be no Clearing for this contract, from April 1 to September 30 both dates inclusive, in order to avoid adverse impacts upon the NLEBs.

Notify Project Leader 14 days in advance of any work on box culverts or bridges to allow time for department to complete the Bats Presence Structure Inspection Form.

Submit a schedule and description of Clearing and Grubbing operations to the department 14 days prior to any Clearing operations. The department will determine, based on schedule and scope of work, what erosion control shall be implemented prior to the start of Clearing operations.

57. Other Contracts.

The following projects will be under construction concurrently with the work under this contract:

Project 1420-23-71, USH 151, CTH T Overpass, Fond du Lac County, Wisconsin under a department contract.

Project 1009-00-83, STH 23/USH 151 Interchange, Fond du Lac County, Wisconsin under a department contract. The anticipated start to the project is in July of 2016. This project involves OSOW intersection modifications.

Schedule of Items

Attached, dated November 4, 2015, are the revised Schedule of Items Page 9.

Plan Sheets

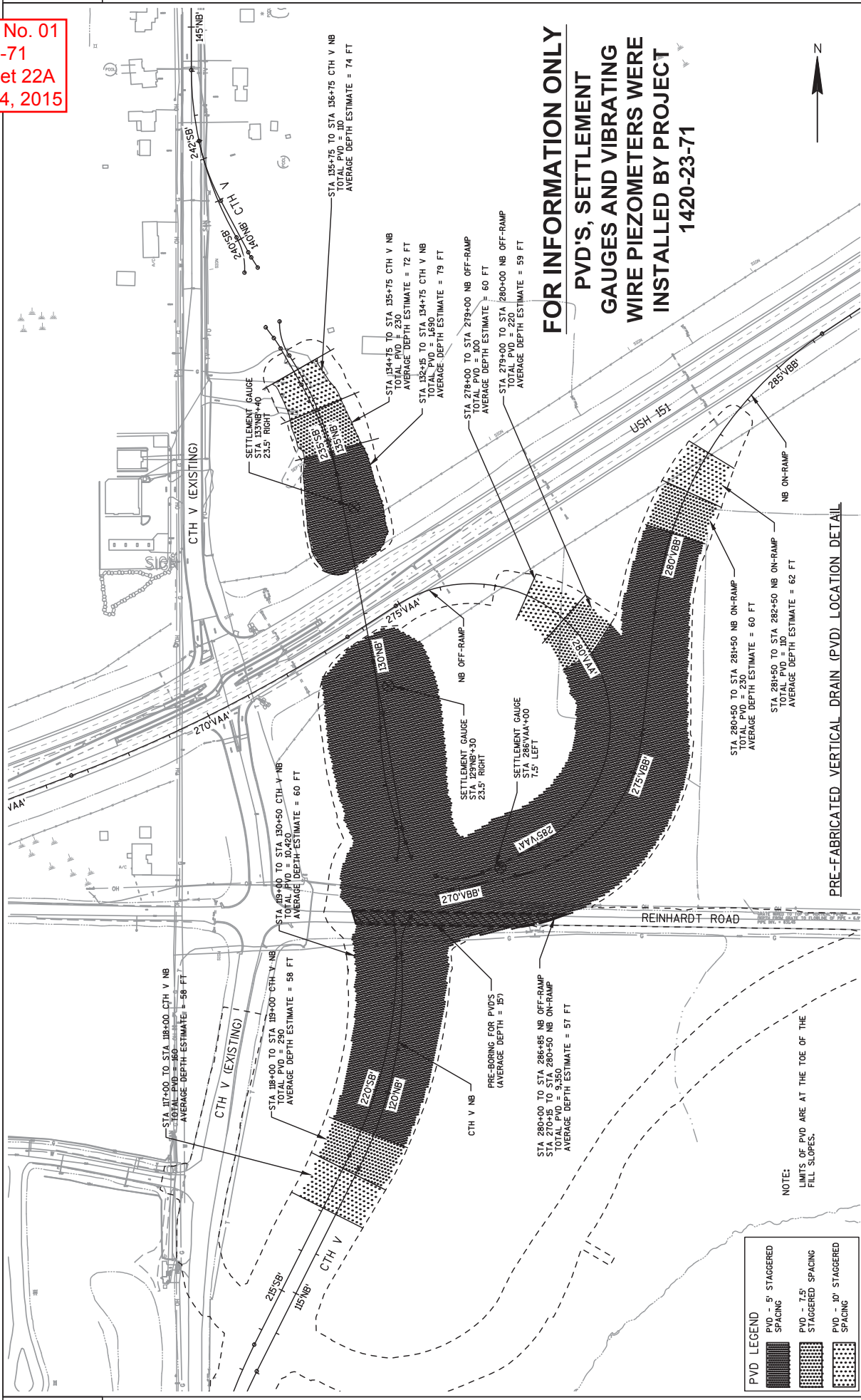
The following 8½ x 11-inch sheets are attached and made part of the plans for this proposal:

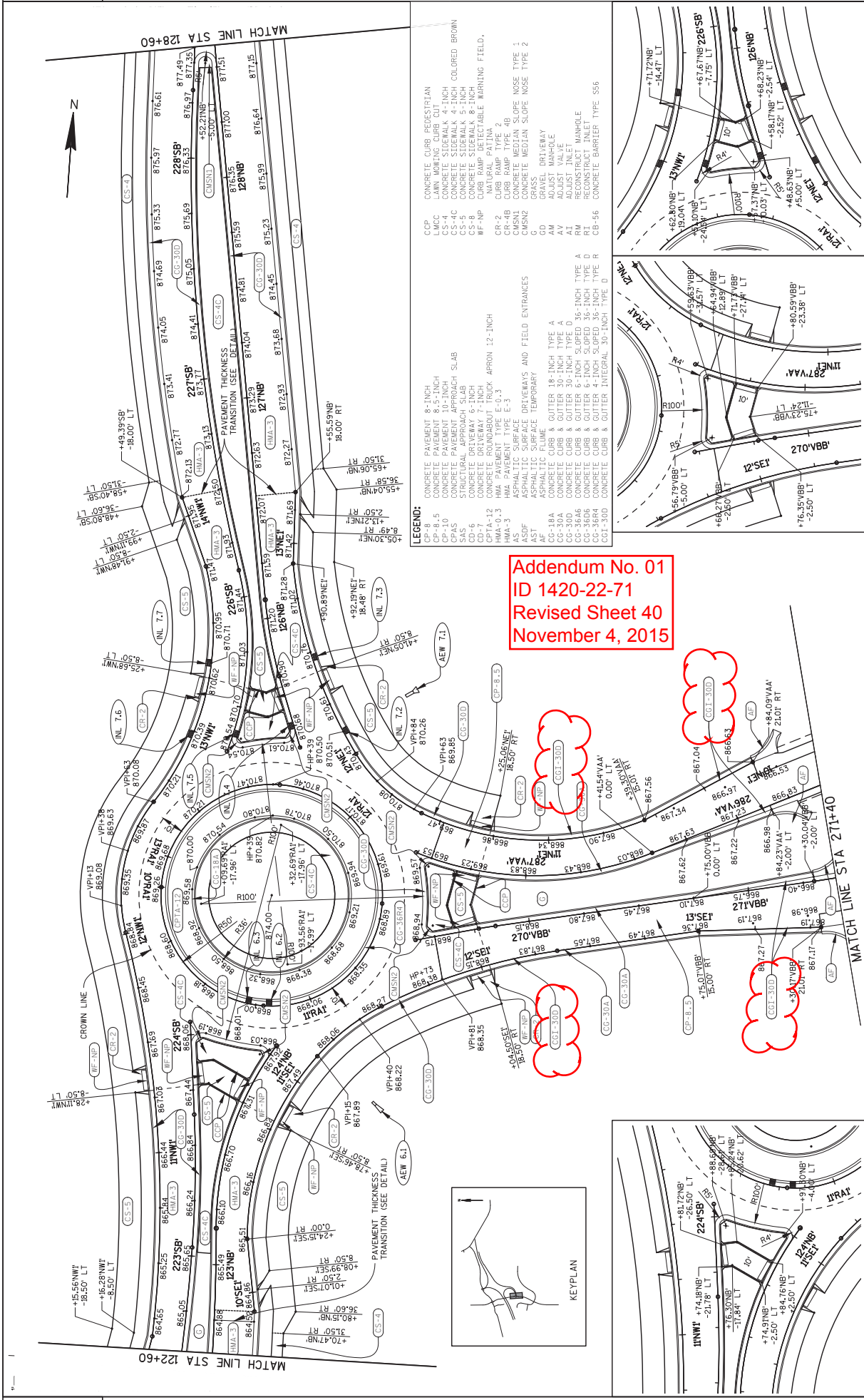
Revised: 46, 46 and 266.

Added: 22A

END OF ADDENDUM

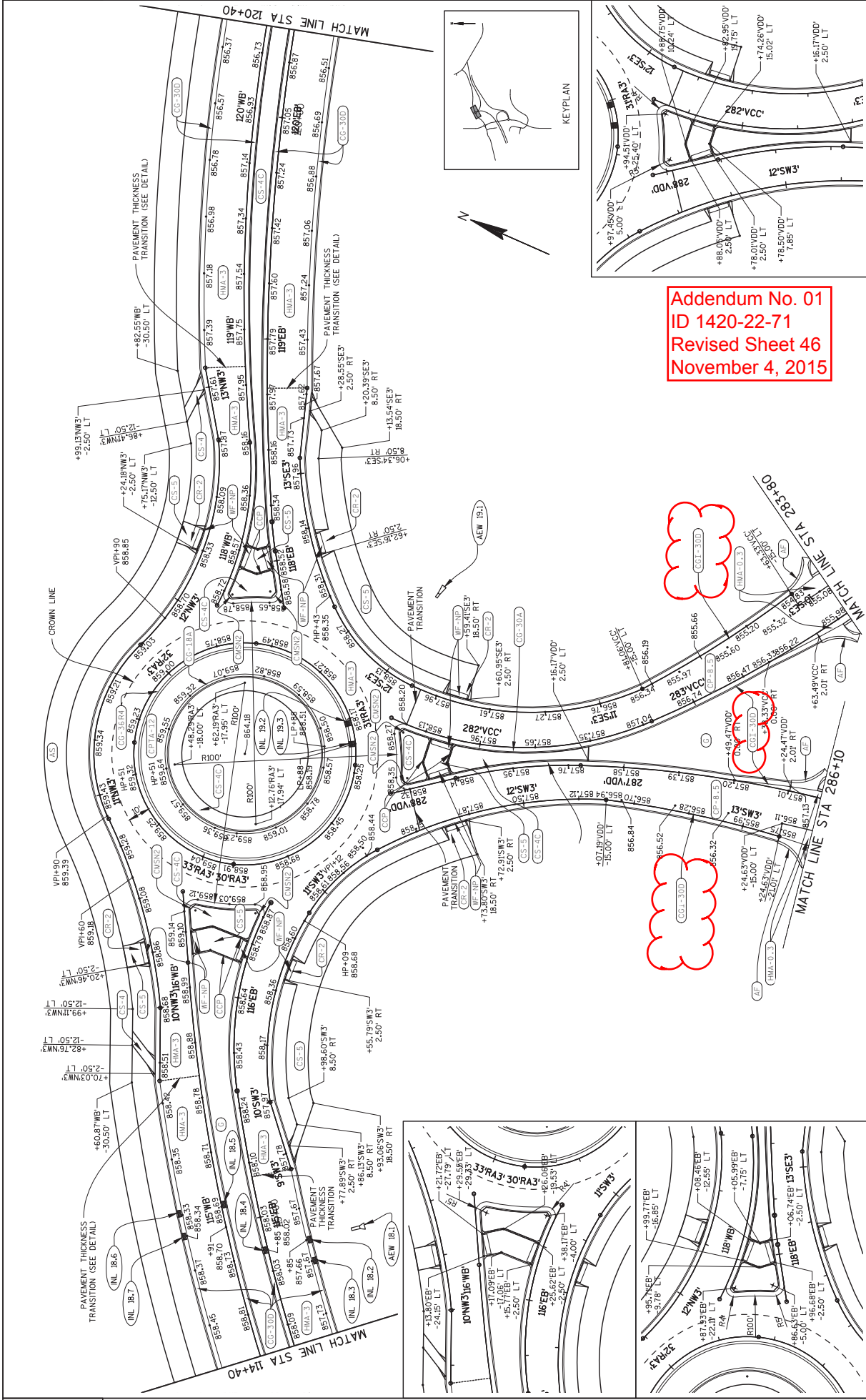
Addendum No. 01
 ID 1420-22-71
 Added Sheet 22A
 November 4, 2015





Addendum No. 01
 ID 1420-22-71
 Revised Sheet 40
 November 4, 2015

- LEGEND:**
- CONCRETE PAVEMENT 8-INCH
 - CP-8.5 CONCRETE PAVEMENT 8.5-INCH
 - CP-9.5 CONCRETE PAVEMENT 9.5-INCH
 - CPAS CONCRETE PAVEMENT APPROACH SLAB
 - CS-4C STRUCTURAL APPROACH SLAB
 - CS-5 CONCRETE DRIVEWAY 5-INCH
 - CS-8 CONCRETE DRIVEWAY 8-INCH
 - CS-12 CONCRETE DRIVEWAY 12-INCH
 - CPTA-12 CONCRETE DRIVEWAY 12-INCH
 - HMA-0.3 HMA PAVEMENT TYPE E-0.3
 - HMA-3 HMA PAVEMENT TYPE E-3
 - ASPH CONCRETE DRIVEWAYS AND FIELD ENTRANCES
 - ASPH ASPHALTIC SURFACE
 - AST ASPHALTIC SURFACE TEMPORARY
 - AF ASPHALTIC FLUME
 - CG-38A CONCRETE CURB & GUTTER 38-INCH TYPE A
 - CG-38B CONCRETE CURB & GUTTER 38-INCH TYPE B
 - CG-38C CONCRETE CURB & GUTTER 38-INCH TYPE C
 - CG-38D CONCRETE CURB & GUTTER 38-INCH TYPE D
 - CG-36A6 CONCRETE CURB & GUTTER 36-INCH TYPE A
 - CG-36B6 CONCRETE CURB & GUTTER 36-INCH TYPE B
 - CG-36C6 CONCRETE CURB & GUTTER 36-INCH TYPE C
 - CG-36D6 CONCRETE CURB & GUTTER 36-INCH TYPE D
 - CG-38R4 CONCRETE CURB & GUTTER 38-INCH TYPE R
 - CG-38R4 CONCRETE CURB & GUTTER 38-INCH TYPE R
 - CG-38B CONCRETE CURB & GUTTER 38-INCH TYPE B
 - CG-38D CONCRETE CURB & GUTTER 38-INCH TYPE D
 - CC-300 CONCRETE DRIVEWAY 30-INCH TYPE S56
 - CC-308 CONCRETE DRIVEWAY 30-INCH TYPE S56
 - CR-2 CURB RAMP TYPE 2
 - CR-4B CURB RAMP TYPE 4B
 - CR-4C CURB RAMP TYPE 4C
 - CMSN3 CONCRETE MEDIAN SLOPE NOSE TYPE 3
 - CMSN2 CONCRETE MEDIAN SLOPE NOSE TYPE 2
 - G GRASS
 - GD GRAVEL DRIVEWAY
 - AM ADJUST MANHOLE
 - ADJ INLET
 - ADJUST INLET
 - RM RECONSTRUCT MANHOLE
 - RI RECONSTRUCT INLET
 - CB-56 CONCRETE BARRIER TYPE S56



Addendum No. 01
 ID 1420-22-71
 Revised Sheet 46
 November 4, 2015

CONCRETE CURB AND GUTTER

STATION TO STATION	DIR	LOCATION	601.0409	601.0409	601.0409	601.0452	601.0555	601.0557	601.0580	601.0600
PROJECT 1420-22-71	CATEGORY 0010		18-INCH TYPE A LF	30-INCH TYPE A LF	30-INCH TYPE D LF	INTEGRAL 30-INCH TYPE D LF	9-INCH SLOPED TYPE A LF	6-INCH SLOPED TYPE D LF	4-INCH SLOPED TYPE R LF	CONCRETE CURB PED. LF
285+84 - 287+43	LT & RT	USH 151 NB OFF-RAMP	204	---	---	103	---	---	---	---
269+57 - 271+30	LT & RT	USH 151 NB ON-RAMP	182	---	---	164	---	---	---	---
281+66 - 283+63	LT & RT	USH 151 SB OFF-RAMP	175	---	---	206	---	---	---	---
286+24 - 287+97	LT & RT	USH 151 SB ON-RAMP	149	---	---	190	---	---	---	---
115+00 - 122+80	LT & RT	CTH V	3,006	---	---	---	---	---	---	---
122+80 - 126+56	LT & RT	CTH V ROUNDABOUT	1,361	---	---	---	---	---	---	---
126+56 - 130+15	LT & RT	CTH V	86	1,001	---	---	---	---	---	---
132+39 - 136+75	LT & RT	CTH V	86	816	---	---	---	---	---	---
136+75 - 140+55	LT & RT	CTH V ROUNDABOUT	220	---	---	---	---	---	---	---
140+55 - 144+85	LT & RT	CTH V	---	1,786	---	---	---	---	---	---
10+00 - 15+50	LT & RT	OLD CTH V NORTH	---	1,275	---	---	---	---	---	---
104+47 - 106+00	LT & RT	PARK AVE	---	243	---	---	---	---	---	---
109+36 - 115+18	LT & RT	FRONTAGE ROAD	---	2,367	---	---	---	---	---	---
118+78 - 142+81	LT & RT	FRONTAGE RD ROUNDABOUT	220	---	---	---	---	---	---	---
389+63 - 397+03	RT	USH 45	---	5,367	---	---	---	---	---	---
PROJECT TOTALS			660	882	709	906	357	---	---	---

CONCRETE SIDEWALK AND RAMPS

STATION TO STATION	DIR	LOCATION	SPV.0035.04	602.0405	602.0410	SPV.0165.03	602.0515
PROJECT 1420-22-71			COLORING CONCRETE BROWN CY	CONCRETE SIDEWALK 4-INCH SF	CONCRETE SIDEWALK 5-INCH SF	CONCRETE SIDEWALK 8-INCH SF	DETECTABLE CURB RAMP WARNING FIELD NATURAL PATINA SF
CATEGORY 0010							
215+08 - 222+20	LT	CTH V SB	---	3,506	---	---	---
115+00 - 122+70	RT	CTH V NB	---	3,924	---	---	---
122+24 - 126+65	LT & RT	CTH V RA SOUTH	---	176	9,265	---	216
226+58 - 229+89	LT	CTH V SB	---	1,521	---	---	---
126+65 - 130+17	RT	CTH V NB	---	1,655	---	---	---
132+37 - 236+70	LT	CTH V SB	---	2,007	---	---	---
132+56 - 136+65	RT	CTH V NB	---	1,973	---	---	---
136+65 - 140+69	LT & RT	CTH V RA NORTH	---	394	11,478	---	288
140+69 - 149+07	LT	CTH V	---	3,434	---	---	---
140+53 - 149+06	RT	CTH V	---	3,749	---	---	---
104+47 - 105+59	RT	PARK AVE	---	319	---	---	---
10+00 - 15+41	LT	OLD CTH V NORTH	---	2,735	---	---	---
115+21 - 118+85	LT & RT	FRONTAGE RD RA	---	228	4,097	---	216
127+13 - 142+68	LT & RT	FRONTAGE RD	---	807	473	---	36
10+90 - 111+47	LT & RT	TEMP TRAIL EAST	---	147	---	---	---
CATEGORY 0010 SUBTOTALS			0	26,802	25,460	517	800
CATEGORY 0020							
123+05 - 128+50	LT & RT	CTH V	---	68	5,512	---	---
136+57 - 139+75	LT & RT	CTH V	---	44	3,602	---	---
116+26 - 121+42	LT & RT	FRONTAGE RD	---	55	4,427	---	---
CATEGORY 0020 SUBTOTALS			167	13,541	0	0	0
PROJECT TOTALS			167	40,343	25,460	517	800

CONCRETE BARRIER TEMPORARY PRECAST

603.8000	DELIVERED LF	900
603.8125	INSTALLED LF	900
PROJECT 1420-22-71 CATEGORY 0010		USH 151
STAGE V3		900
PROJECT TOTALS		900

CONCRETE BARRIER

STATION TO STATION	DIR	LOCATION	603.1156	603.3559	603.3535	603.3213
PROJECT 1420-22-71			CONCRETE BARRIER TYPE 556 LF	CONCRETE BARRIER TRANSITION TYPE S42 TO S56 EACH	CONCRETE BARRIER TRANSITION TYPE S36 TO S42 EACH	CONCRETE BARRIER TRANSITION TYPE F32SF TO S36 EACH
CATEGORY 0010						
307+75 - 316+00	---	USH 151 SB OFF RAMP	825	---	---	---
316+00 - 316+25	---	USH 151 SB OFF RAMP	---	1	---	---
316+25 - 316+35	---	USH 151 SB OFF RAMP	---	1	---	---
316+35 - 316+50	---	USH 151 SB OFF RAMP	---	---	1	---
PROJECT TOTALS			825	1	1	1

CONCRETE BARRIER

603.8000	DELIVERED LF	900
603.8125	INSTALLED LF	900
PROJECT 1420-22-71 CATEGORY 0010		USH 151
STAGE V3		900
PROJECT TOTALS		900

Addendum No. 01
 ID 1420-22-71
 Revised Sheet 266
 November 4, 2015

SCHEDULE OF ITEMS

REVISED:

CONTRACT:
20151110019PROJECT(S):
1420-22-71FEDERAL ID(S):
WISC 2015578

CONTRACTOR : _____

LINE NO	ITEM DESCRIPTION	APPROX. QUANTITY AND UNITS	UNIT PRICE		BID AMOUNT	
			DOLLARS	CTS	DOLLARS	CTS
0850	601.0409 Concrete Curb & Gutter 30-Inch Type A	882.000 LF
0860	601.0411 Concrete Curb & Gutter 30-Inch Type D	19,062.000 LF
0870	601.0452 Concrete Curb & Gutter Integral 30-Inch Type D	663.000 LF
0880	601.0555 Concrete Curb & Gutter 6-Inch Sloped 36-Inch Type A	32.000 LF
0890	601.0557 Concrete Curb & Gutter 6-Inch Sloped 36-Inch Type D	709.000 LF
0900	601.0580 Concrete Curb & Gutter 4-Inch Sloped 36-Inch Type R	906.000 LF
0910	601.0600 Concrete Curb Pedestrian	357.000 LF
0920	602.0405 Concrete Sidewalk 4-Inch	40,343.000 SF
0930	602.0410 Concrete Sidewalk 5-Inch	25,460.000 SF
0940	602.0515 Curb Ramp Detectable Warning Field Natural Patina	800.000 SF
0950	603.1156 Concrete Barrier Type S56	825.000 LF