



Wisconsin Department of Transportation

December 3, 2015

Division of Transportation Systems Development

Bureau of Project Development
4802 Sheboygan Avenue, Rm 601
P O Box 7916
Madison, WI 53707-7916

Telephone: (608) 266-1631
Facsimile (FAX): (608) 266-8459

NOTICE TO ALL CONTRACTORS:

**Proposal #18: 6414-00-78, WISC 2015 660
Village of Plover, Post Road
Green Drive to Springville Drive
Business 51
Portage County**

**6414-00-88
Village of Plover, Post Road
Green Drive to Springville Drive
Business 51
Portage County
Local Utility**

Letting of December 8, 2015

This is Addendum No. 01, which provides for the following:

Special Provisions

Revised Special Provisions	
Article No.	Description
3	Prosecution and Progress
4	Other Contracts
41	Grit Chamber, Type A, Item SPV.0060.01; Type C, Item SPV.0060.02; Type I, Item SPV.0060.03
42	Inlet Covers Type Special, Item SPV.0060.04
49	Cleanout, Item SPV.0060.12
50	6-Inch PVC Plug, Item SPV .0060.13
75	PVC Pipe 8-Inch, Item SPV.0090.03
76	Schedule 40 PVC 6-Inch, Item SPV.0090.04
77	Schedule 40 PVC Perforated 6-Inch, Item SPV.0090.05
79	Steel Casing Pipe 66-Inch, Item SPV.0090.07

Added Special Provisions	
Article No.	Description
101	Removing Buildings Parcel 13

Deleted Special Provisions	
Article No.	Description
21	QMP Base Aggregate Dense 1 ¼-Inch Compaction Item 371.1000.S

Schedule of Items

Revised Bid Item Quantities					
Bid Item	Item Description	Unit	Old Quantity	Revised Quantity	Proposal Total
415.0090	Concrete Pavement 9-Inch	SY	36,130	2,002	38,132
415.1090	Concrete Pavement HES 9-Inch	SY	9,587	531	10,118

Plan Sheets

Revised Plan Sheets	
Plan Sheet	Plan Sheet Title (brief description of changes to sheet)
228	Miscellaneous Quantities (updates to quantities of Concrete Pavement)
266 & 267	Plan Profile Sheets (added note for location of buildings to be razed)

Added Plan Sheets	
Plan Sheet	Plan Sheet Title (brief description of why sheet was added)
436A	Missing cross section sheet

The responsibility for notifying potential subcontractors and suppliers of these changes remains with the prime contractor.

Sincerely,

Mike Coleman

Proposal Development Specialist
Proposal Management Section

ADDENDUM NO. 01
6414-00-78 & 6414-00-88
December 3, 2015

Special Provisions

3. Prosecution and Progress

Replace entire article language with the following:

Begin work within ten calendar days after the engineer issues a written notice to do so.

Provide the start date to the engineer in writing within a month after executing the contract but at least 14 calendar days before the preconstruction conference. Upon approval, the engineer will issue the notice to proceed within ten calendar days before the approved start date.

To revise the start date, submit a written request to the engineer at least two weeks before the intended start date. The engineer will approve or deny that request based on the conditions cited in the request and its effect on the department's scheduled resources.

Northern Long-eared Bat (*Myotis septentrionalis*)

Northern Long-eared Bats (NLEB) have the potential to inhabit the project limits because they roost in trees and structures (bridges, culverts, buildings). Roosts may not have been observed on this project, but conditions to support the species exist. The species and all active roosts are protected by the Federal Endangered Species Act.

In order to avoid adverse impacts upon the NLEBs, no vegetation clearing and grubbing within the identified clearing and grubbing limits will be allowed from April 1 to September 30, both dates inclusive.

If the required clearing and removal is not completed by March 31, the department will suspend all clearing and associated work directly impacted by clearing. The department will issue a notice to proceed with clearing and associated work directly impacted by clearing after consulting with the United States Fish and Wildlife Service (USFWS).

Submit a schedule and description of Clearing and/or Grubbing operations with the ECIP 14 days prior to any Clearing operations. The department will determine, based on schedule and scope of work, what additional erosion control measures shall be implemented prior to the start of Clearing operations, and list those additional measures in the ECIP.

Place the lower layer of asphaltic pavements on side roads before the upper surface layer of asphaltic pavements are placed on the mainline adjacent to the side road.

Place the upper surface layer of asphaltic pavement on the side roads within seven calendar days after the upper surface layer of asphaltic pavement is placed on the mainline.

The contractor will be allowed to close the parking lot area along Chestnut Drive at the Plover Post Office for a maximum period of two weeks. The parking lot must be completed and re-opened to public use within two weeks after the commencement of work. The contractor must coordinate the construction of the temporary exit only driveway onto Chestnut Street during Stage 2a and 2b with the Postmaster. Access at Sta. 497+89 RT must remain open at all times.

The commercial building at 2820 Post Road will not be ready for asbestos removal until March 31, 2016.

4. Other Contracts

Remove paragraph three. Project 6290-05-75 has been delayed.

21. DELETED

41. Grit Chamber, Type A, Item SPV.0060.01; Type C, Item SPV.0060.02; Type I, Item SPV.0060.03

*Replace paragraph one under section titled **B Materials** with the following:*

B Materials

Furnish precast 6-foot by 6-foot or 8-foot by 8-foot box culvert sections and end sections that when assembled will achieve the required length for grit chambers as shown in the plans. Box culvert sections shall be constructed to meet AASHTO HS-25 loadings.

42. Inlet Covers Type Special, Item SPV.0060.04.

*Replace entire section titled **C Construction** with the following:*

C Construction

Carefully remove the existing casting to avoid damage to the existing storm sewer structure. Remove rings, flat tops, and structure walls as required to install Inlet Covers Type Special on the existing storm structure to the required elevation. Backfill trenches according to standard spec 608.3.5.

49. Cleanout, Item SPV.0060.12.

*Replace entire section titled **C Construction** with the following:*

C Construction

Construct according to the plan details. Backfill trenches according to standard spec 608.3.5.

50. 6-Inch PVC Plug, Item SPV .0060.13.

*Replace entire section titled **C Construction** with the following:*

C Construction

Glue polyvinyl chloride plug to end of infiltration trench pipe. Install minimum 3-foot by 3-foot concrete thrust block or cast in place thrust block of equal square footage. Backfill trenches according to standard spec 608.3.5.

75. PVC Pipe 8-Inch, Item SPV.0090.03.

*Replace paragraph five under section titled **C Construction** with the following:*

Backfill trenches according to Standard spec 608.3.5.

76. Schedule 40 PVC 6-Inch, Item SPV.0090.04.

Replace paragraph five under section titled C Construction with the following:

Backfill trenches according to Standard spec 608.3.5.

77. Schedule 40 PVC Perforated 6-Inch, Item SPV.0090.05.

Replace paragraph five under section titled C Construction with the following:

Backfill trenches according to Standard spec 608.3.5.

79. Steel Casing Pipe 66-Inch, Item SPV.0090.07.

Replace paragraph two under section titled C Construction with the following:

Backfill trenches according to Standard spec 608.3.5.

101. Removing Buildings Parcel 13.

Perform this work in accordance with the pertinent requirements of standard spec 204 and as hereinafter provided.

Marsha Meurette, License Number ALL-3634, inspected the garage and commercial building structures at 2820 Post Road for asbestos on August 28, 2015. Regulated Asbestos Containing Material (RACM) was found in the commercial building at the following locations and quantities:

1. The north entrance exterior gray cementitious transite soffit panels: A total of 320 sf.
2. The brown 9"x9" floor tile located over concrete in the compressor room and the electrical hallway: A total of 345 sf.
3. The tan 12"x12" floor tile located over concrete in the freezer room, the grocery room, the distribution area, the storage area and the front entrance: A total of 8,050 sf.
4. The gray fibrous light fixture paper located in the ceiling of the compressor room: A total of 0.25 sf.

The RACM in this structure must be abated by a licensed abatement contractor. A copy of the inspection report is available from Jeffery Stewart (715) 421 - 8376. In accordance with NR447 and DHS159, ensure that DNR or DHS receives a completed Notification of Demolition and/or Renovation (DNR Form 4500-113 (R 4/11), or subsequent revision) via U.S. mail, hand-delivery, or using the online notification system at least 10 working days prior to beginning any construction or demolition. Pay all associated fees. Provide a copy of the completed 4500-113 form and the abatement report to Jeffery Stewart (715) 421 - 8376 and DOT BTS-ESS attn: Hazardous Materials Specialist PO Box 7965, Madison, WI. 53707-7965. In addition, comply with all local or municipal asbestos requirements.

Use the following information to complete WisDNR form 4500-113:

- Site Name: Parcel 13 Interfaith Food Pantry
- Site Address: 2820 Post Road, Plover, WI 54467
- Ownership Information: WisDOT Transportation North Central Region, Wisconsin Rapids Office, 1681 Second Avenue South, Wisconsin Rapids, WI 54495
- Contact: Dan Holloway
- Phone: (715) 421 – 7305

If asbestos not previously identified is found or previously non-friable asbestos becomes crumbled, pulverized, or reduced to a powder, stop work immediately, notify the engineer, and the engineer will notify the department's Bureau of Technical Services at 608-266-1476 for an emergency response in accordance to standard spec 107.24. Keep material wet until it is abated or until it is determined to be non-asbestos containing material.

Schedule of Items

Attached, dated December 3, 2015, are the revised Schedule of Items Pages 3 and 4.

Plan Sheets

The following 8 ½ x 11-inch plan sheets are attached and made part of the plans for this proposal:

Revised Sheets: 228, 266, 267

Added Sheet: 436A

END OF ADDENDUM

BASE AGGREGATE

STATION - STATION	LOCATION	BASE AGGREGATE DENSE 3/4-INCH TON	BASE AGGREGATE DENSE 1 1/4-INCH TON	623.0200 DUST CONTROL SURFACE TREATMENT SY
STAGE 1A				
122+84-128+30.55	SIDEWALK	84	228	1025
128+90-211-131+37	SIDEWALK	43	171	770
128+90-211-131+37	DRIVEWAYS / PARKING LOTS	56	171	770
139+50-150+66	SIDEWALK	79	177	795
156+67-170+84	SIDEWALK	141	323	1555
171+19-173+88	SIDEWALK	27	35	160
SUB-TOTAL		400	990	4555
STAGE 1B				
152+90-155+24	MAINLINE	125	27	125
156+67-158+66	MAINLINE	44	44	200
175+41-179+50	MAINLINE	80	80	360
175+41-179+50	MAINLINE	80	80	360
SUB-TOTAL		0	184	835
STAGE 1C				
128+30.55-128+90.21	RAILROAD	73	73	175
SUB-TOTAL		0	73	175
STAGE 2A				
120+40-121+62	MAINLINE	40	845	120
122+84-128+30.55	DRIVEWAYS / PARKING LOTS	41	450	2535
128+90-211-131+37	DRIVEWAYS / PARKING LOTS	43	482	1230
143+28-174+58	DRIVEWAYS / PARKING LOTS	433	482	14585
176+07-178+07	DRIVEWAYS / PARKING LOTS	124	333	1000
178+07-181+62.87	DRIVEWAYS / PARKING LOTS	6	1210	1815
18+93-19+14	WILLOW DR	59	59	90
28+80-29+12	CEEDAR DR	280	280	420
43+32-44+16	GILMAN DR	18	189	285
46+30-49+17	BEA JAY LN	15	203	305
SUB-TOTAL		1184	9962	26985
STAGE 2B				
121+62-122+64	MAINLINE	148	348	445
131+56-133+00	MAINLINE	1020	941	1020
142+18-143+28	MAINLINE	240	720	2385
174+58-176+07	MAINLINE	398	1195	1195
13+25-14+13	GREEN DR	244	365	800
497+05-498+90	CHESNUT DR	534	505	800
32+90-34+10	RIVER DR	28	335	505
46+30-49+17	PLOVER SPRINGS DR	29	330	505
SUB-TOTAL		210	3148	6410
STAGE 3A				
122+84-128+30.55	DRIVEWAYS / PARKING LOTS	27	795	2385
128+90-211-131+37	DRIVEWAYS / PARKING LOTS	93	429	1285
132+76-138+55	DRIVEWAYS / PARKING LOTS	108	938	2815
139+50-150+66	DRIVEWAYS / PARKING LOTS	696	1981	5945
152+90-155+24	DRIVEWAYS / PARKING LOTS	375	512	1535
156+67-172+39	DRIVEWAYS / PARKING LOTS	238	2796	8390
175+61-179+00	DRIVEWAYS / PARKING LOTS	7	1335	1335
20+58-20+83	WILLOW DR	466	466	130
25+59-26+00	SUMAC LN	21	112	170
35+65-37+22	SERVICE ENTRANCE	1665	575	860
SUB-TOTAL		1665	9538	25490
STAGE 3B				
131+37-132+76	MAINLINE	348	348	1045
150+66-152+90	MAINLINE	316	950	950
172+39-173+61	DRIVEWAYS / PARKING LOTS	200	689	2005
40+81-41+29	SCHOOL DR	150	225	1450
SUB-TOTAL		221	3349	7275
STAGE 3C				
121+75-122+84	MAINLINE	131	395	395
138+55-139+50	MAINLINE	165	555	555
155+24-156+67	GREEN DR	324	970	970
15+63-16+00	GREEN DR	103	155	155
600+74-603+50	ROOSEVELT DR	982	1480	4085
SUB-TOTAL		41	2082	4085
STAGE 4				
121+75-125+26	DRIVEWAYS / PARKING LOTS	948	2845	2845
ITEM TOTAL		3621	30275	78655

BASE AGGREGATE OPEN GRADED

STATION	LOCATION	TON	COMMENT
STAGE 2A			
BUSINESS 51			
163+43.00 - 164+99.34	58.5' LT	284	INFILTRATION TRENCH
164+99.34 - 170+23.16	58.5' LT	931	INFILTRATION TRENCH
170+23.16 - 174+58.00	58.5' - 63.6' LT	765	INFILTRATION TRENCH
176+07.75 - 176+27.26	59.0' - 58.5' LT	42	INFILTRATION TRENCH
176+27.26 - 181+09.00	58.5' LT	878	INFILTRATION TRENCH
STAGE 2A SUBTOTAL		2900	
STAGE 2B			
BUSINESS 51			
174+58.00 - 176+07.75	63.6' - 59.0' LT	270	INFILTRATION TRENCH
STAGE 2B SUBTOTAL		270	
STAGE 3A			
BUSINESS 51			
163+43.00 - 165+00.13	34.5' RT	284	INFILTRATION TRENCH
165+00.13 - 170+23.16	34.5' RT	932	INFILTRATION TRENCH
170+23.16 - 172+37.85	34.5' - 38.7' RT	375	INFILTRATION TRENCH
175+60.92 - 176+27.26	38.3' - 34.5' RT	122	INFILTRATION TRENCH
176+27.26 - 181+09.00	34.5' - 49.9' RT	847	INFILTRATION TRENCH
STAGE 3A SUBTOTAL		2560	
STAGE 3A			
BUSINESS 51			
172+37.85 - 175+60.92	38.3' - 48.5' RT	290	INFILTRATION TRENCH
STAGE 3A SUBTOTAL		290	
ITEM TOTAL		6020	

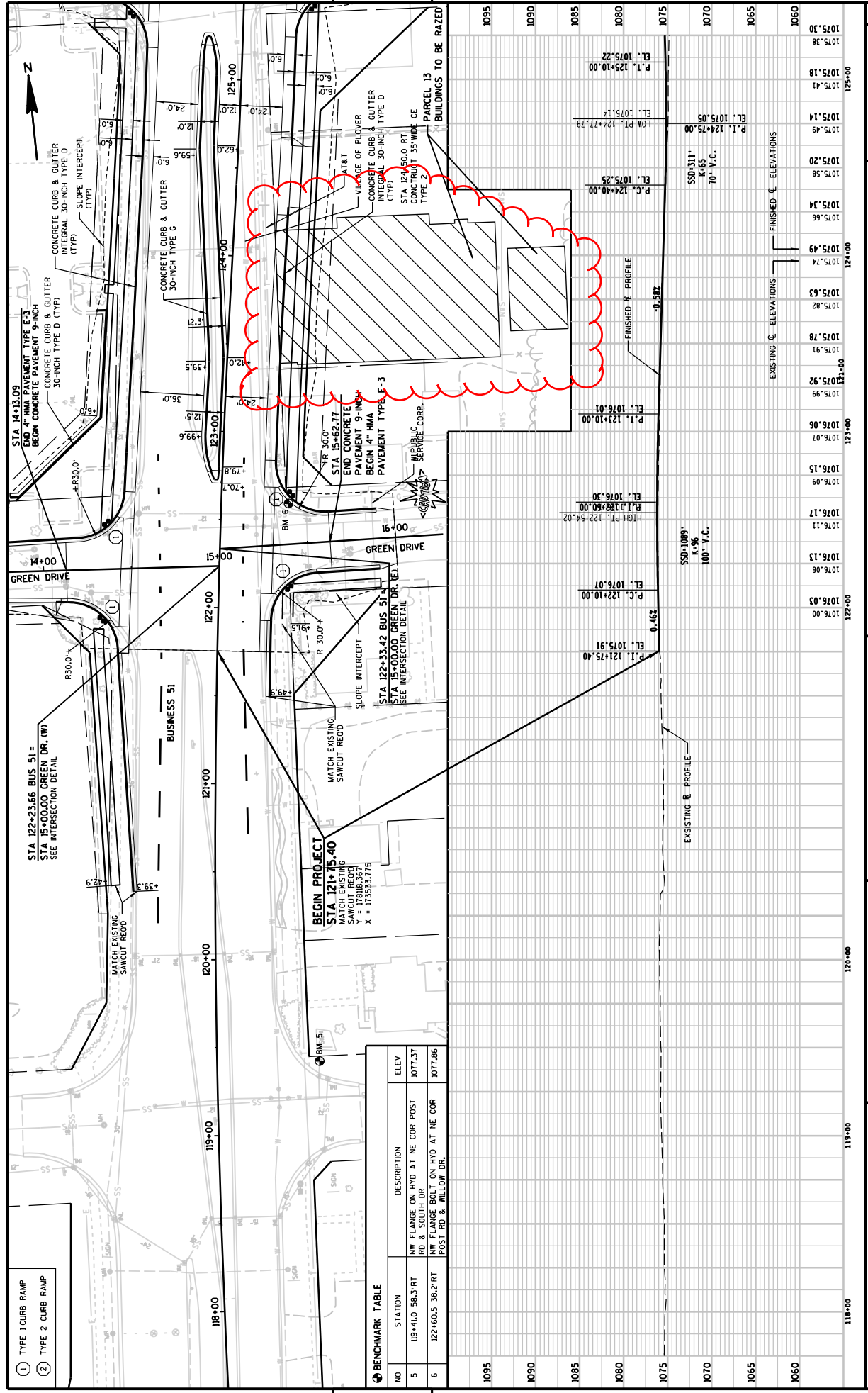
CONCRETE PAVEMENT

STATION - STATION	LOCATION	9-INCH SY	9-INCH SY
STAGE 2A			
120+40-121+62	MAINLINE	73	73
122+84-128+30.55	MAINLINE	2164	2164
128+90-211-131+37	MAINLINE	1106	1106
133+00-142+16	MAINLINE	153	153
139+50-150+66	MAINLINE	1206	1206
152+90-155+24	MAINLINE	1003	1003
156+67-172+39	MAINLINE	21285	21285
SUB-TOTAL		0	0
STAGE 2B			
121+62-122+64	GREEN DR INTERSECTION	433	433
131+56-133+00	CHESNUT DR INTERSECTION	564	564
142+18-143+28	RIVER DR INTERSECTION	708	708
174+58-176+07	PLOVER SPRINGS INTERSECTION	1186	1186
SUB-TOTAL		0	2891
STAGE 3A			
122+84-128+30.55	MAINLINE	1815	1815
128+90-211-131+37	MAINLINE	950	950
132+76-138+55	MAINLINE	2148	2148
139+50-150+66	MAINLINE	4215	4215
152+90-155+24	MAINLINE	1146	1146
156+67-172+39	MAINLINE	5638	5638
175+61-179+00	MAINLINE	957	957
SUB-TOTAL		16867	16867
STAGE 3C			
131+37-132+76	CHESNUT DR INTERSECTION	1016	1016
150+66-152+90	SCHOOL DR INTERSECTION	898	898
172+39-173+61	PLOVER SPRINGS INTERSECTION	4284	4284
SUB-TOTAL		0	4284
STAGE 3C			
121+75-122+84	GREEN DR INTERSECTION	359	359
138+55-139+50	CEEDAR DR INTERSECTION	533	533
155+24-156+67	ROOSEVELT DR INTERSECTION	1849	1849
SUB-TOTAL		0	1084
STAGE 4			
121+75-125+26	MAINLINE	38132	10118
ITEM TOTAL		38132	10118

NOTE: ALL ITEMS AND QUANTITIES ON THIS SHEET ARE FOR ENGINEER USE ONLY. PLEASE NOTE UNLESS OTHERWISE NOTED.

Addendum No. 01
ID 6414-00-78/88
Revised Sheet 228
December 3, 2015

Addendum No. 01
 ID 6414-00-78/88
 Revised Sheet 266
 December 3, 2015



- ① TYPE 1 CURB RAMP
- ② TYPE 2 CURB RAMP

BENCHMARK TABLE

NO.	STATION	DESCRIPTION	ELEV.
5	119+41.0	NW FLANGE ON HYD AT NE COR POST	1077.37
6	122+60.5	NW FLANGE BOT I ON HYD AT NE COR POST, RD & WILLOW DR.	1077.86

SCHEDULE OF ITEMS

REVISED:

CONTRACT:
20151208018PROJECT(S):
6414-00-78
6414-00-88FEDERAL ID(S):
WISC 2015660
N/A

CONTRACTOR : _____

LINE NO	ITEM DESCRIPTION	APPROX. QUANTITY AND UNITS	UNIT PRICE		BID AMOUNT	
			DOLLARS	CTS	DOLLARS	CTS
0210	204.0245 Removing Storm Sewer (size) 08. 48-Inch	498.000 LF	.		.	
0220	204.0245 Removing Storm Sewer (size) 09. 54-Inch	1,896.000 LF	.		.	
0230	204.0280 Sealing Pipes	2.000 EACH	.		.	
0240	205.0100 Excavation Common	40,450.000 CY	.		.	
0250	213.0100 Finishing Roadway (project) 01. 6414-00-78	1.000 EACH	.		.	
0260	305.0110 Base Aggregate Dense 3/4-Inch	3,621.000 TON	.		.	
0270	305.0120 Base Aggregate Dense 1 1/4-Inch	30,275.000 TON	.		.	
0280	310.0110 Base Aggregate Open Graded	6,020.000 TON	.		.	
0290	371.1000.S QMP Base Aggregate Dense 1 1/4-Inch Compaction	30,275.000 TON	.		.	
0300	415.0090 Concrete Pavement 9-Inch	38,132.000 SY	.		.	
0310	415.0210 Concrete Pavement Gaps	24.000 EACH	.		.	

SCHEDULE OF ITEMS

REVISED:

CONTRACT:
20151208018PROJECT(S):
6414-00-78
6414-00-88FEDERAL ID(S):
WISC 2015660
N/A

CONTRACTOR : _____

LINE NO	ITEM DESCRIPTION	APPROX. QUANTITY AND UNITS	UNIT PRICE		BID AMOUNT	
			DOLLARS	CTS	DOLLARS	CTS
0320	415.1090 Concrete Pavement HES 9-Inch	10,118.000 SY	.		.	
0330	416.0260 Concrete Driveway HES 6-Inch	1,490.000 SY	.		.	
0340	416.0610 Drilled Tie Bars	62.000 EACH	.		.	
0350	440.4410 Incentive IRI Ride	8,400.000 DOL	1.00000		8400.00	
0360	455.0120 Asphaltic Material PG64-28	155.000 TON	.		.	
0370	455.0605 Tack Coat	1,984.000 GAL	.		.	
0380	460.1103 HMA Pavement Type E-3	2,785.000 TON	.		.	
0390	460.2000 Incentive Density HMA Pavement	1,800.000 DOL	1.00000		1800.00	
0400	465.0120 Asphaltic Surface Driveways and Field Entrances	1,099.000 TON	.		.	
0410	465.0125 Asphaltic Surface Temporary	1,190.000 TON	.		.	
0420	465.0310 Asphaltic Curb	2,627.000 LF	.		.	