



# Wisconsin Department of Transportation

December 1, 2015

## Division of Transportation Systems Development

Bureau of Project Development  
4802 Sheboygan Avenue, Rm 601  
P O Box 7916  
Madison, WI 53707-7916

### NOTICE TO ALL CONTRACTORS:

Telephone: (608) 266-1631  
Facsimile (FAX): (608) 266-8459

**Proposal #26: 8180-02-70, WISC 2015 018**  
**Ladysmith - Ojibwa**  
**Thornapple River Bridge B-54-0120**  
**STH 27**  
**Rusk County**

### Letting of December 8, 2015

This is Addendum No. 01, which provides for the following:

#### Special Provisions

Revised Special Provisions	
Article No.	Description
3	Prosecution and Progress

#### Schedule of Items

Deleted Bid Item Quantities					
Bid Item	Item Description	Unit	Old Quantity	Revised Quantity	Proposal Total
460.2000	Incentive Density HMA Pavement	DOL	1040	-1040	0

#### Plan Sheets

Revised Plan Sheets	
Plan Sheet	Plan Sheet Title (brief description of changes to sheet)
2	General Notes (Changed HMA Pavement to Asphaltic Surface Special)
3	Typical Sections (Changed HMA Pavement to Asphaltic Surface Special)
4	Construction Details (Changed HMA Pavement to Asphaltic Surface Special)

The responsibility for notifying potential subcontractors and suppliers of these changes remains with the prime contractor.

Sincerely,

*Mike Coleman*

Proposal Development Specialist  
Proposal Management Section

**ADDENDUM NO. 01**

**8180-02-70**

**December 1, 2015**

**Special Provisions**

**3. Prosecution and Progress**

*Add the following:*

**Northern Long-eared Bat (*Myotis septentrionalis*)**

Northern Long-eared Bats (NLEB) have the potential to inhabit the project limits because they roost in trees and structures (bridges, culverts, buildings). Roosts may not have been observed on this project, but conditions to support the species exist. The species and all active roosts are protected by the Federal Endangered Species Act.

In order to avoid adverse impacts upon the NLEBs, no vegetation clearing and grubbing within the identified clearing and grubbing limits will be allowed from June 1 to July 31, both dates inclusive.

If the required clearing and removal is not completed by May 31, the department will suspend all clearing and associated work directly impacted by clearing. The department will issue a notice to proceed with clearing and associated work directly impacted by clearing after consulting with the United States Fish and Wildlife Service (USFWS).

Submit a schedule and description of Clearing and/or Grubbing operations with the ECIP 14 days prior to any Clearing operations. The department will determine, based on schedule and scope of work, what additional erosion control measures shall be implemented prior to the start of Clearing operations, and list those additional measures in the ECIP.

Notify the Project Leader 14 days in advance of any work on box culverts or bridges between April 1 and September 30 to allow time for department to complete the Bat Presence Structure Inspection Form.

If bats or evidence of bats are not found during the inspection, construction may proceed.

If bats or evidence of bats are found during the inspection, construction activities affecting the structure's roosting potential must stop until the WisDOT Regional Environmental Coordinator completes consultation with the Wisconsin Department of Natural Resources (WDNR) and/or United States Fish and Wildlife Service (USFWS).

**Schedule of Items**

Attached, dated December 1, 2015, are the revised Schedule of Items Pages 2 and 3.

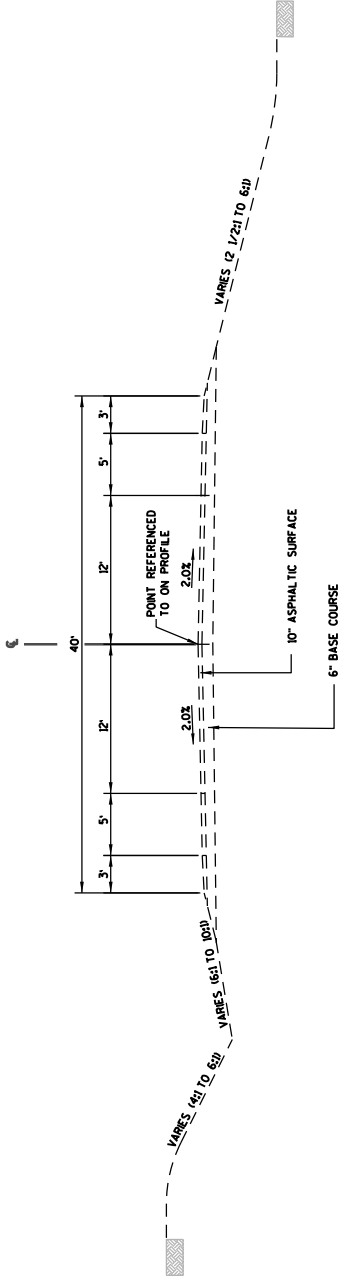
**Plan Sheets**

The following 8½ x 11-inch sheets are attached and made part of the plans for this proposal:

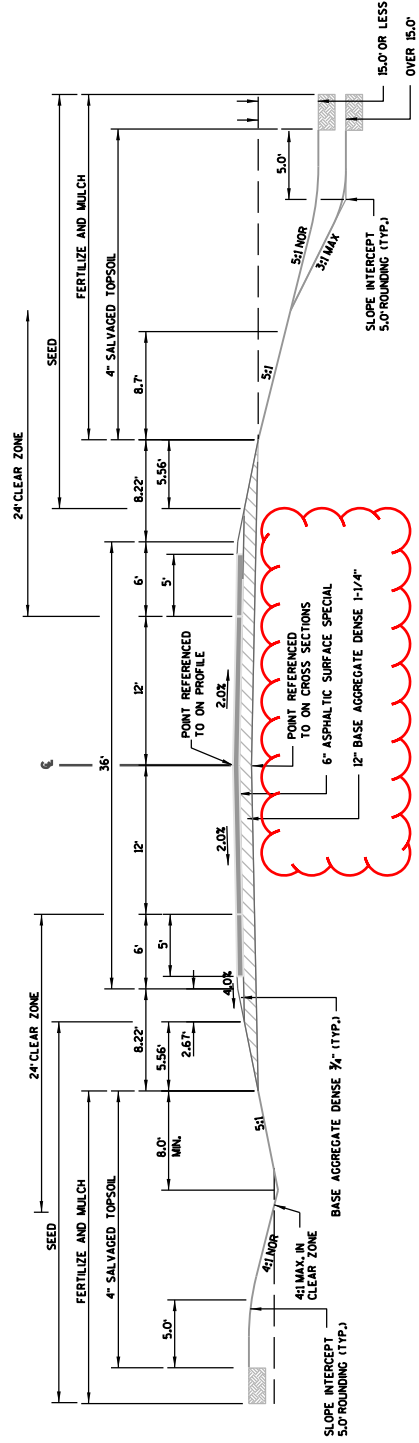
Revised: 2, 3, and 4.

END OF ADDENDUM





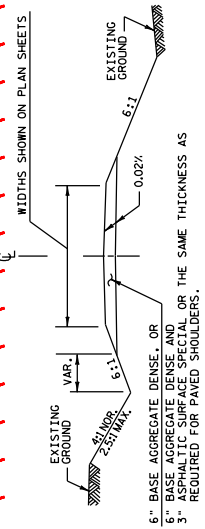
EXISTING TYPICAL SECTION - STH 27



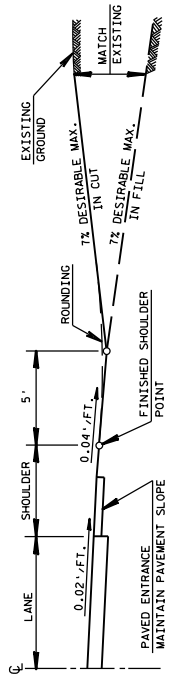
FINISHED TYPICAL SECTION - STH 27

STA 3+00 TO STA 9+37.47  
STA 10+62.53 TO STA 16+50

Addendum No. 01  
ID 8180-02-70  
Revised Sheet 3  
December 1, 2015

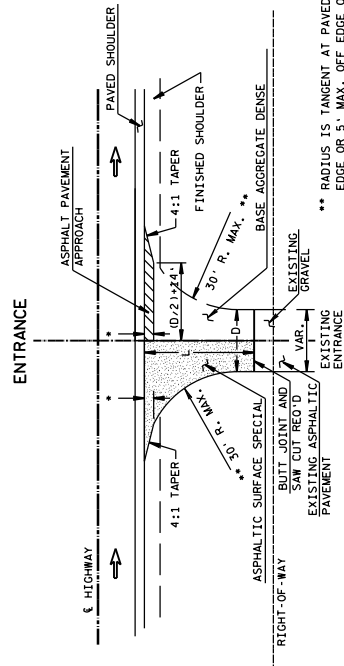


TYPICAL CROSS SECTION



PROFILE VIEW

Addendum No. 01  
ID 8180-02-70  
Revised Sheet 4  
December 1, 2015

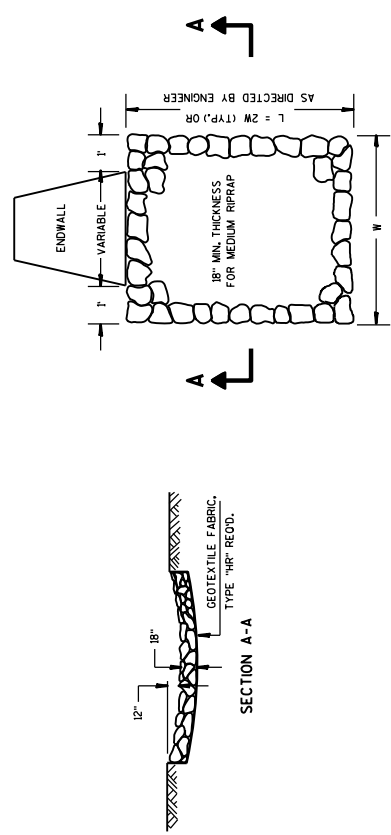


L\*VARIABLE, EXACT LENGTH TO BE DETERMINED  
IN THE FIELD BY THE ENGINEER.  
BLEND BACK ON THE ENTRANCE FAR  
ENOUGH TO GET A SMOOTH PROFILE.  
D-ORTRIEWAY WIDTH  
D-20 TYP. (PE'S & FE'S) (16'-MIN.-24' MAX.)

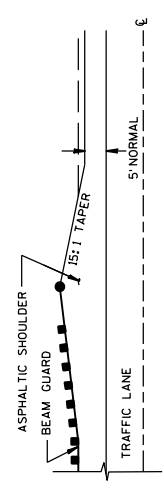
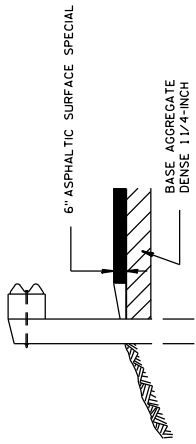
\*\* RADIUS IS TANGENT AT PAVED SHOULDER  
EDGE OR 5' MAX. OFF EDGE OF MAIN LINE  
PAVEMENT WHICH EVER IS LESS.  
\* 3' MAX. OR TO FINISHED SHOULDER  
WHICH EVER IS LESS.

PLAN VIEW

RURAL DRIVEWAY INTERSECTION DETAIL  
(PE'S, FE'S & CE'S)  
(FOR NEW CONSTRUCTION)



MEDIUM RIPRAP TREATMENT AT CULVERTS



DETAIL FOR ASPHALTIC SHOULDER AT BEAM GUARD

## SCHEDULE OF ITEMS

REVISED:

CONTRACT:  
20151208026PROJECT(S):  
8180-02-70FEDERAL ID(S):  
WISC 2015018

CONTRACTOR : \_\_\_\_\_

LINE NO	ITEM DESCRIPTION	APPROX. QUANTITY AND UNITS	UNIT PRICE		BID AMOUNT	
			DOLLARS	CTS	DOLLARS	CTS
0100	210.0100 Backfill Structure	290.000 CY	.	.	.	.
0110	213.0100 Finishing Roadway (project) 02. 8180-02-70	1.000 EACH	.	.	.	.
0120	305.0110 Base Aggregate Dense 3/4-Inch	230.000 TON	.	.	.	.
0130	305.0120 Base Aggregate Dense 1 1/4-Inch	4,350.000 TON	.	.	.	.
0140	415.0410 Concrete Pavement Approach Slab	130.000 SY	.	.	.	.
0150	416.1010 Concrete Surface Drains	22.000 CY	.	.	.	.
0160	455.0605 Tack Coat	490.000 GAL	.	.	.	.
0180	465.0315 Asphaltic Flumes	20.000 SY	.	.	.	.
0190	502.0100 Concrete Masonry Bridges	629.000 CY	.	.	.	.
0200	502.3200 Protective Surface Treatment	700.000 SY	.	.	.	.
0210	505.0405 Bar Steel Reinforcement HS Bridges	6,000.000 LB	.	.	.	.

## SCHEDULE OF ITEMS

REVISED:

CONTRACT:  
20151208026PROJECT(S):  
8180-02-70FEDERAL ID(S):  
WISC 2015018

CONTRACTOR : \_\_\_\_\_

LINE NO	ITEM DESCRIPTION	APPROX. QUANTITY AND UNITS	UNIT PRICE		BID AMOUNT	
			DOLLARS	CTS	DOLLARS	CTS
0220	505.0605 Bar Steel Reinforcement HS Coated Bridges	110,440.000 LB	.	.	.	.
0230	516.0500 Rubberized Membrane Waterproofing	22.000 SY	.	.	.	.
0240	521.0124 Culvert Pipe Corrugated Steel 24-Inch	148.000 LF	.	.	.	.
0250	521.1024 Apron Endwalls for Culvert Pipe Steel 24-Inch	8.000 EACH	.	.	.	.
0260	522.0136 Culvert Pipe Reinforced Concrete Class III 36-Inch	164.000 LF	.	.	.	.
0270	522.1036 Apron Endwalls for Culvert Pipe Reinforced Concrete 36-Inch	4.000 EACH	.	.	.	.
0280	550.1100 Piling Steel HP 10-Inch X 42 Lb	2,700.000 LF	.	.	.	.
0290	606.0200 Riprap Medium	48.000 CY	.	.	.	.
0300	606.0300 Riprap Heavy	590.000 CY	.	.	.	.
0310	612.0406 Pipe Underdrain Wrapped 6-Inch	180.000 LF	.	.	.	.