



Wisconsin Department of Transportation

Division of Transportation Systems Development

Bureau of Project Development
4822 Madison Yards Way, 4th Floor South
Madison, WI 53705

Telephone: (608) 266-1631
Facsimile (FAX): (608) 266-8459

September 10, 2018

NOTICE TO ALL CONTRACTORS:

Proposal #06: 2984-38-71, WISC 2018 376
Various Highways
Various Bridges B40-378, 579, 580
Var Hwy
Milwaukee County

Letting of September 11, 2018

This is Addendum No. 01, which provides for the following:

Plan Sheets:

Revised Plan Sheets	
Plan Sheet	Plan Sheet Title (brief description of changes to sheet)
134-140	Structure B-40-378, sheets 1 thru 7 of 7

Added Plan Sheets	
Plan Sheet	Plan Sheet Title (brief description of why sheet was added)
139A	Structure B-40-378, Cover Plate Details

Plan Sheets

The following 8½ x 11-inch sheets are attached and made part of the plans for this proposal:

Revised: 134, 135, 136, 137, 138, 139, and 140.

Added: 139A.

The responsibility for notifying potential subcontractors and suppliers of these changes remains with the prime contractor.

Sincerely,

Mike Coleman

Proposal Development Specialist
Proposal Management Section

END OF ADDENDUM

TOTAL ESTIMATED QUANTITIES

BID ITEM NUMBER	BID ITEMS	UNIT	QUANTITY
203.0200	REMOVING OLD STRUCTURE (55-42)	LS	1
203.0225.5.03	DEBRIS CONTAINMENT B-40-378	LS	1
502.0100	CONCRETE MASONRY BRIDGES	CY	4
502.3100	EXPANSION DEVICES B-40-378	LS	1
502.3200	PROTECTIVE SURFACE TREATMENT	SY	3080
502.3210	PIGMENTED SURFACE SEALER	SY	165
502.4204	ADHESIVE ANCHORS NO. 4 BAR	EACH	40
502.4205	ADHESIVE ANCHORS NO. 5 BAR	EACH	174
502.4206	ADHESIVE ANCHORS NO. 6 BAR	EACH	88
505.0600	BAR STEEL REINFORCEMENT HS COATED STRUCTURES	LB	6640
505.0904	BAR COUPLERS NO. 4	EACH	36
505.0905	BAR COUPLERS NO. 6	EACH	12
505.0906	BAR COUPLERS NO. 5	EACH	40
509.0301	PREPARATION DECKS TYPE 1	SY	10
509.0302	PREPARATION DECKS TYPE 2	SY	1
509.0310	SAWING PAVEMENT DECK PREPARATION AREAS	LF	100
509.0500	CLEANING DECKS	SY	2657
509.1000	JOINT REPAIR	SY	77
509.2000	CURB REPAIR	LF	2
509.1500	CONCRETE SURFACE REPAIR	SF	17
509.2000	FULL-DEPTH DECK REPAIR	SY	1
509.2500	CONCRETE MASONRY OVERLAY DECKS	CY	138
517.8005.01	STRUCTURE REPAINTING RECYCLED ABRASIVE B-40-378	LS	1
517.8005.01	STRUCTURE OVERCOATING AND PRIMING B-40-378	LS	1
517.8005.01	CONTAINMENT AND COLLECTION OF WASTE MATERIALS B-40-378	LS	1
517.8005.01	NEGATIVE PRESSURE CONTAINMENT AND COLLECTION OF WASTE MATERIALS B-40-378	LS	1
517.6001.5	PORTABLE DECONTAMINATION FACILITY	EACH	1
652.0225	CONDUIT RIGID NONMETALLIC SCHEDULE 40, 2-INCH	LF	28
653.0222	JUNCTION BOXES BX2X6-INCH	EACH	2
657.6005	ANCHOR ASSEMBLIES LIGHT POLES ON STRUCTURES	EACH	2

ALL ITEMS ARE CATEGORY 0020.



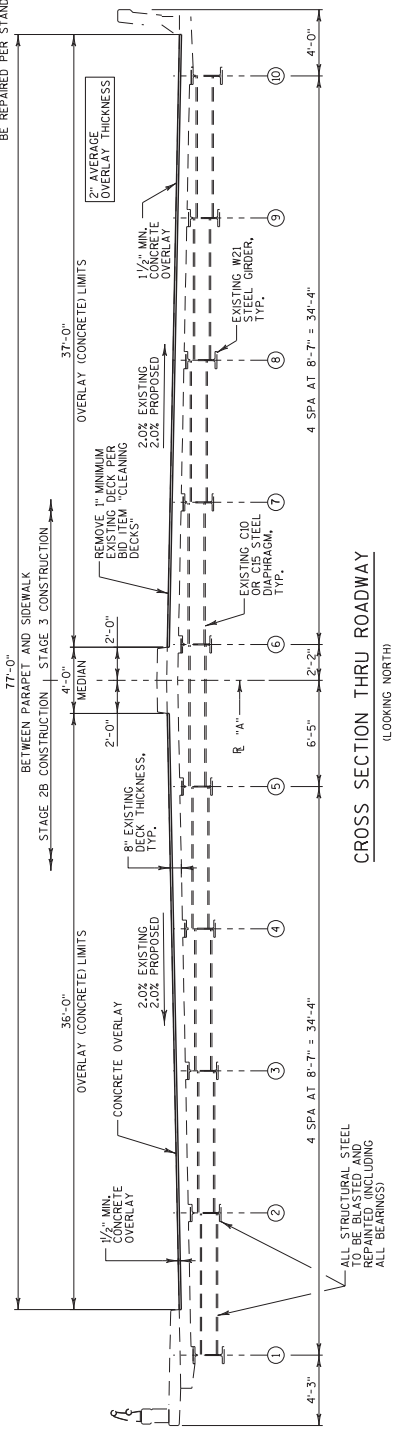
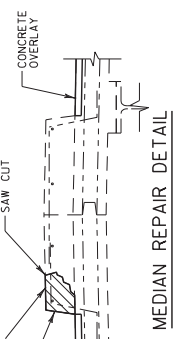
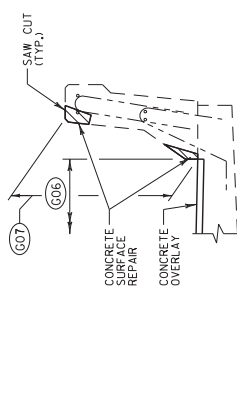
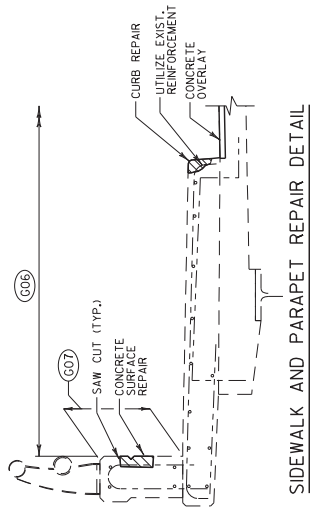
GENERAL NOTES

DRAWINGS SHALL NOT BE SCALED.
 BAR STEEL REINFORCEMENT SHALL BE EMBEDDED 2" CLEAR UNLESS OTHERWISE SHOWN OR NOTED.
 THE FIRST OR FIRST TWO DIGITS OF THE BAR MARK SIGNIFIES THE BAR SIZE.
 DIMENSIONS SHOWN ARE BASED ON THE ORIGINAL STRUCTURE PLANS AND SUBSEQUENT NEW SUPERSTRUCTURE PLANS.
 "PROTECTIVE SURFACE TREATMENT" SHALL BE APPLIED TO THE ENTIRE TOP SURFACE OF THE NEW CONCRETE OVERLAY, THE CONCRETE MEDIUM AND THE CONCRETE SIDEWALK.
 UTILIZE EXISTING BAR STEEL REINFORCEMENT WHERE SHOWN AND EXTEND 24 BAR DIAMETERS INTO NEW WORK UNLESS SPECIFIED OTHERWISE.
 "PREPARATION DECKS TYPE 1" AND "PREPARATION DECKS TYPE 2" AND "FULL-DEPTH DECK REPAIR" AREAS ARE BASED ON THE PLANS AND AS DETERMINED BY THE ENGINEER. DECK PREPARATION AND FULL-DEPTH DECK REPAIRS SHALL BE FILLED WITH "CONCRETE MASONRY OVERLAY DECKS".
 "PREPARATION DECKS TYPE 1" SHALL BE DEFINED BY A SAW CUT.
 A MINIMUM OF 1-INCH OF CONCRETE SHALL BE REMOVED FROM THE ENTIRE BRIDGE DECK UNDER THE BID ITEM "CLEANING DECKS".
 ALL CONCRETE REMOVAL NOT COVERED WITH A CONCRETE OVERLAY SHALL BE DEFINED BY A 1-INCH DEEP SAW CUT.
 AT "CURB REPAIR" EXPOSED EXISTING REINFORCEMENT A MINIMUM OF 1/2" CLEAR BEYOND REINFORCING. EXPANSION JOINT ASSEMBLY INCLUDING ANCHOR STUDS AND HARDWARE SHALL BE PAID FOR IN THE LUMP SUM PRICE, BID AS "EXPANSION DEVICE B-40-378".
 PROFILE GRADE SHALL BE DETERMINED IN THE FIELD BASED ON A MINIMUM OVERLAY THICKNESS OF 1/2" MINIMUM ABOVE THE SURFACE AFTER "CLEANING DECKS". IF EXPECTED GRADE OVERLAY THICKNESS IS EXCEEDED BY MORE THAN 1/2", CONTACT THE STRUCTURES DESIGN SECTION.
 MEDIUM SHALL BE CLEANED PRIOR TO APPLICATION OF "PROTECTIVE SURFACE TREATMENT". CLEANING OF MEDIUM SHALL BE PAID UNDER BID ITEM "PROTECTIVE SURFACE TREATMENT". CLEANING OF PARAPETS SHALL BE PAID UNDER BID ITEM "PIGMENTED SURFACE SEALER". CLEANING OF PARAPETS SHALL BE PAID UNDER BID ITEM "PIGMENTED SURFACE SEALER".
 CONCRETE QUANTITY NEEDED FOR BID ITEMS "JOINT REPAIR", "CURB REPAIR" AND "FULL-DEPTH DECK REPAIR" SHALL BE PAID UNDER BID ITEM "CONCRETE MASONRY OVERLAY DECKS".
 THE EXISTING STRUCTURE B-40-378 IS A 6-SPAN STEEL GIRDER STRUCTURE WITH AN OVERALL BRIDGE LENGTH OF 377'-0". THE EXISTING BRIDGE DECK IS 37'-0" WIDE. THE EXISTING BRIDGE DECK SHALL BE PREPARED FOR A NEW CONCRETE OVERLAY. THE EXPANSION JOINTS AT BOTH ABUTMENTS SHALL BE REPLACED. ALL BEARINGS AT BOTH ABUTMENTS SHALL BE CLEANED AND ABUTMENT CONCRETE SURFACE REPAIRS SHALL BE PERFORMED AS DIRECTED BY THE FIELD ENGINEER. ALL STEEL ELEMENTS OF THE SUPERSTRUCTURE SHALL BE PAINTED AS DETAILED ON THE PLANS.
 THE BID ITEM "STRUCTURE REPAINTING RECYCLED ABRASIVE B-40-378" INCLUDES CLEANING AND PAINTING ALL STEEL ELEMENTS INCLUDING GIRDERS, BRACING ELEMENTS AND EXISTING BRIDGES.
 THE COLOR OF THE FINISH PAVEMENT TOP COAT ON THE STEEL GIRDERS AND CONNECTING STRUCTURAL STEEL SHALL BE REDDISH-BROWN FEDERAL STANDARD COLOR NO. 20054.
 ANY EXCAVATION NECESSARY TO COMPLETE THE JOINT REPAIR AT THE ABUTMENTS IS TO BE CONSIDERED INCIDENTAL TO THE BID ITEM "CONCRETE MASONRY OVERLAY DECKS".
 REFER TO ROADWAY PLANS FOR TRAFFIC CONTROL PLANS AND STAGED CONSTRUCTION DETAILS.
 THE ROADWAY SHALL BE OPEN TO TRAFFIC THROUGHOUT THE PROJECT. THE ROADWAY SHALL BE OPEN TO TRAFFIC THROUGHOUT THE PROJECT. THE ROADWAY SHALL BE OPEN TO TRAFFIC THROUGHOUT THE PROJECT.
 FOR SOUTHBOUND LANES, REPAIRS SHALL BE DONE DURING STAGE 2B. REPAIR WORK FOR NORTHBOUND LANES AND EAST PARAPET SHALL BE DONE DURING STAGE 3.
 REFERENCE LINE "A" REPRESENTS THE CENTER LINE OF BRIDGE B-40-378 AND IS A TANGENT LINE TO REFERENCE LINE 5TH 181 AT STATION 56+12.18 (R/L 5TH 181) AND STATION 56+12.26 (R/L "A").
 1993 PLANS INDICATE THE EXISTING DECK AND PARAPETS HAVE COATED REINFORCEMENT. ANY AREAS OF CORROSION, MISSING COATING OR DAMAGED COATING CAUSED BY CONTRACTOR OPERATIONS SHALL BE REPAIRED PER STANDARD SPECIFICATION SECTION 509.3.1.

STATE PROJECT NUMBER
2984-38-71

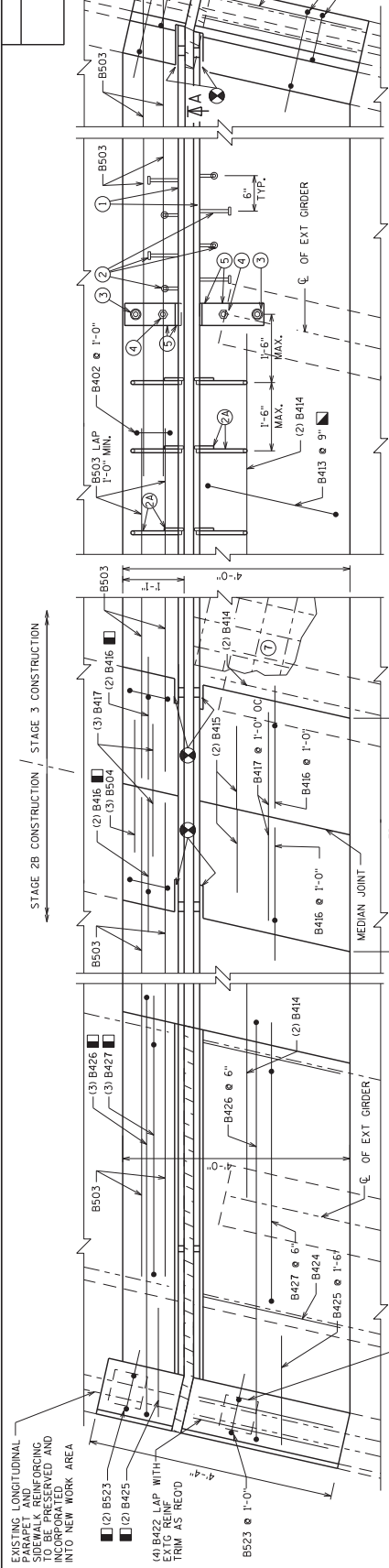
ADDED COVER PLATE DETAILS S-J-G
 NO. DATE REVISION BY
 STATE OF WISCONSIN
 DEPARTMENT OF TRANSPORTATION
 STRUCTURE B-40-378
 SECTION, NOTES AND QUANTITIES
 SHEET 2 OF 8
135

Addendum No. 01
ID 2984-38-71
Revised Sheet 135
September 10, 2018

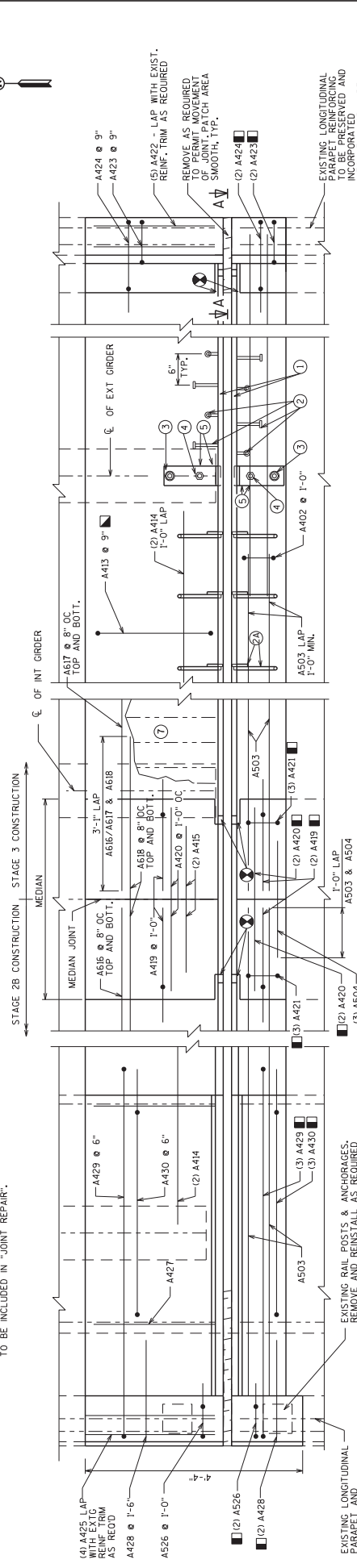


CROSS SECTION THRU ROADWAY
 (LOOKING NORTH)

ALL STRUCTURAL STEEL TO BE BLASTED AND REPAINTED (INCLUDING ALL BEARINGS)



NORTH ABUTMENT EXPANSION JOINT PART PLAN



SOUTH ABUTMENT EXPANSION JOINT PART PLAN

- LEGEND**
- ① NEOPRENE STRIP SEAL (4 - INCH AND STEEL EXTRUSIONS.
 - ② STUDS 5/8" x 6 3/8" LONG AT 6" ALTERNATE CENTERS.
 - ③ 1/2" THICK ANCHOR PLATE WITH 5/8" ROD OR PLATE WELD STRIP SEAL ANCHOR WELD ROD TO ANCHOR PLATE WELD ANCHOR PLATE TO NO. 1 AT 1'-6" CENTERS BETWEEN GRIDDERS.
 - ④ 3/4" x 3/4" THREADED ROD WITH 2 NUTS AND PLATE WASHERS ON GRIDER SIDE WELD THREADED ROD TO TOP FLANGE OR ATTACH BY BOLTING THRU FLANGE, ON ABUTMENT SIDE GROUT THREADED ROD INTO FIELD DRILLED HOLES IN ABUTMENT BACKWALL AS SHOWN.
 - ⑤ 3/4" THREADED ROD WITH NUT, TACK WELD NUT TO NO. 5.
 - ⑥ FABRICATE SUPPORT FROM 3" x 1/2" BAR L.S. SHOWN OR EQUIVALENT ONE PER GRIDER PER SIDE FIELD OR SHOP WELD TO NO. 1 IF FIELD WELDED, COVER WELDED AREAS WITH EPOXY-COATING MATERIAL. PROVIDE 1 1/2" x 1/2" HOLE FOR NO. 3 & 1" HOLE FOR NO. 4.
 - ⑦ ADHESIVE ANCHORS NO. 5 BAR, EMBED 1'-0" IN CONCRETE. SPACE AT 1'-0". TURN HORIZONTAL LEG AS NECESSARY TO FIT.
 - ⑧ EXISTING LONGITUDINAL DECK REINFORCEMENT (LONGITUDINAL AND TRANSVERSE AT NORTH ABUTMENT) TO BE PRESERVED AND INCORPORATED INTO JOINT REPAIR AREA
 - ⑨ BLOCK OUT CONCRETE 2" EACH SIDE OF JOINT OPENING.
 - ⑩ DIMENSIONS GIVEN ARE NORMAL TO C. OF SUBSTRUCTURE UNIT.
 - ⑪ BARS PLACED PARALLEL TO GRIDDERS, SPACING PERPENDICULAR TO C. GRIDDERS.
 - ⑫ EQUALLY SPACE BARS WITHIN LIMITS OF NEW CONSTRUCTION.

EXISTING LONGITUDINAL PARAPET REINFORCING TO BE PRESERVED AND INCORPORATED INTO NEW WORK AREA

EXISTING RAIL POSTS & ANCHORAGES. REMOVE AND REINSTALL AS REQUIRED. EXISTING ANCHORAGES CONTRACTOR MAY FURNISH 3/4" DIA. ADHESIVE ANCHOR. ALL WORK AND HARDWARE TO BE INCLUDED IN "JOINT REPAIR".

EXISTING LONGITUDINAL PARAPET REINFORCING TO BE PRESERVED AND INCORPORATED INTO NEW WORK AREA

REMOVE AS REQUIRED REINFORCING TO PERMIT MOVEMENT OF JOINT, PATCH AREA SMOOTH, TYP.

REMOVE AS REQUIRED REINFORCING TO PERMIT MOVEMENT OF JOINT, PATCH AREA SMOOTH, TYP.

EXISTING LONGITUDINAL PARAPET REINFORCING TO BE PRESERVED AND INCORPORATED INTO NEW WORK AREA

NO.	DATE	REVISION	BY
①	9/7/18	ADDED COVER PLATE DETAILS	S.J.G

STATE OF WISCONSIN
DEPARTMENT OF TRANSPORTATION

STRUCTURE B-40-378

EXPANSION JOINT PLANS

SHEET 3 OF 3

136



Addendum No. 01
ID 2984-38-71
Revised Sheet 136
September 10, 2018

William C. DeLue
09/10/18

GENERAL NOTES

ONE FIELD SPlice PERMITTED IN STEEL EXTRUSIONS. IF USED, DETAILS SHALL BE SUBMITTED FOR APPROVAL. NO SPlicing PERMITTED IN NEOPRENE STRIP SEAL. AFTER FABRICATION, BUT BEFORE SHIPMENT, STRAIGHTEN STEEL EXTRUSIONS SUCH THAT THEY SHALL BE FREE FROM WARP, TWIST & SWEEP. FABRICATOR SHALL PROVIDE MEANS OF KEEPING GALVANIZED EXTRUSIONS CLEAN & SMOOTH DURING SHIPMENT AND PRIOR TO APPLYING LUBRICANT ADHESIVE FOR NEOPRENE GLAND INSTALLATION. SANDBLAST PLATES & EXTRUSIONS AFTER FABRICATION IN ACCORDANCE WITH SSPC SP-6 "COMMERCIAL BLAST CLEANING". AFTER BLAST CLEANING THE PLATES & EXTRUSIONS SHALL BE NOT DIPPED GALVANIZED. STRIP SEAL EXPANSION JOINT ASSEMBLY, INCLUDING ANCHOR STUDS & HARDWARE WILL BE PAID FOR AT THE LUMP SUM PRICE BID FOR "EXPANSION DEVICE B-40-37B".

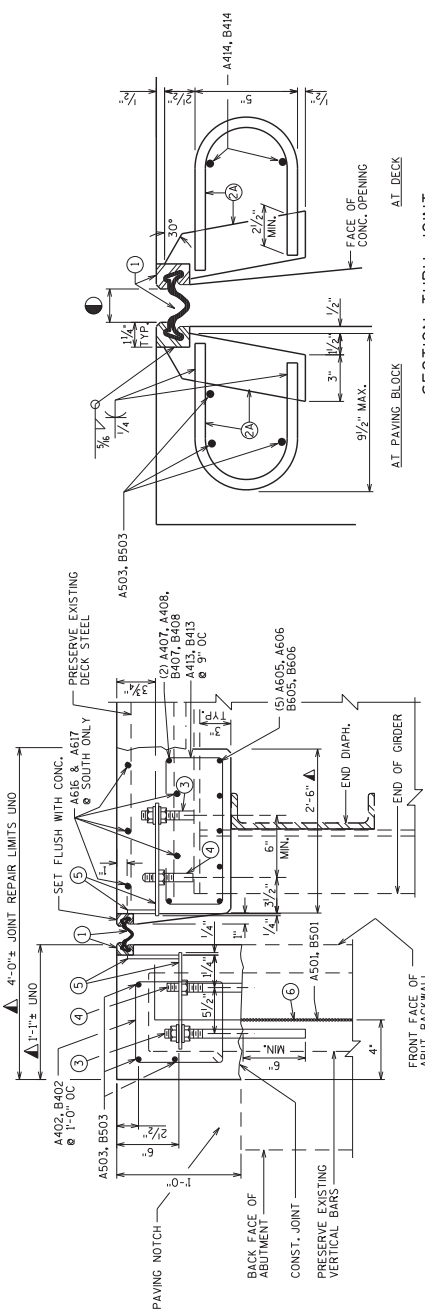
TEMPERATURE TABLE

SHADED UNDERSIDE DECK TEMP. (°F)	DIM. MEASURED NORMAL TO JOINT OPENING
90	1 1/4"
80	2"
70	2 1/2"
60	2 3/4"
50	2 1/4"
40	2 1/4"
30	2 3/4"

Addendum No. 01
ID 2984-38-71
Revised Sheet 137
September 10, 2018

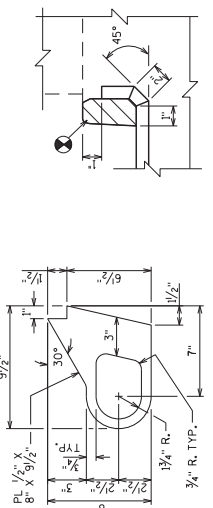
LEGEND

- NEOPRENE STRIP SEAL (4 - INCH AND STEEL EXTRUSIONS.
- STUDS 3/8" X 6 3/8" LONG AT 6" ALTERNATE CENTERS. WELD TO EXTRUSIONS & BEND AS SHOWN AFTER WELDING.
- 1/2" THICK ANCHOR PLATE WITH 3/8" ROD OR ALTERNATE STRIP SEAL ANCHOR. WELD ROD TO ANCHOR PLATE. WELD ANCHOR PLATE TO NO. 1 AT 1'-6" CENTERS BETWEEN ORDERS.
- 3/4" φ THREADED ROD WITH 2 NUTS AND PLATE WASHERS. ON ORDER SIDE WELD THREADED ROD TO TOP FLANGE OR ATTACH BY WELDING TO ANCHOR PLATE. THE OTHER END OF THE ROD INTO FIELD DRILLED HOLES IN ABUTMENT BACKWALL AS SHOWN.
- 3/4" φ THREADED ROD WITH NUT, TACK WELD NUT TO NO. 5.
- FABRICATE SUPPORT FROM 3" X 1/2" BAR AS SHOWN OR EQUIVALENT, ONE PER ORDER PER SIDE. FIELD OR SHOP WELD TO NO. 1. IF FIELD WELDED, COVER WELDED AREAS WITH EPOXY. USE ANCHOR MATERIAL. PROVIDE 1/2" φ HOLE FOR NO. 3 & 1" φ HOLE FOR NO. 4.
- ADHESIVE ANCHORS NO. 5 BAR, EMBED 1'-0" IN CONCRETE. SPACE AT 1'-0". TURN HORIZONTAL LEG AS NECESSARY TO FIT.
- BLOCK OUT CONCRETE 2" EACH SIDE OF JOINT OPENING.
- DIMENSIONS GIVEN ARE NORMAL TO C. OF SUBSTRUCTURE UNIT.
- BAR PLACED PARALLEL TO ORDERS. SPACING PERPENDICULAR TO C. ORDERS.
- EQUALLY SPACE BARS WITHIN LIMITS OF NEW CONSTRUCTION.
- DIMENSION MEASURED NORMAL TO JOINT OPENING. REFER TO TEMPERATURE TABLE ON THIS SHEET.

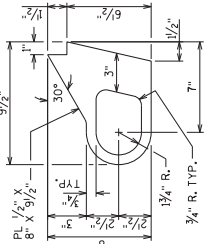


SECTION THRU JOINT AT ABUTMENT
NORMAL TO C. SUBSTRUCTURE

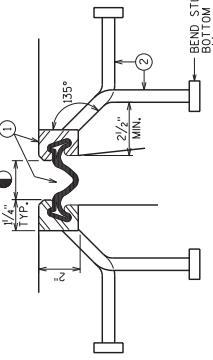
SECTION THRU JOINT
ROADWAY TRAFFIC AREA BETWEEN EXTERIOR ORDERS.



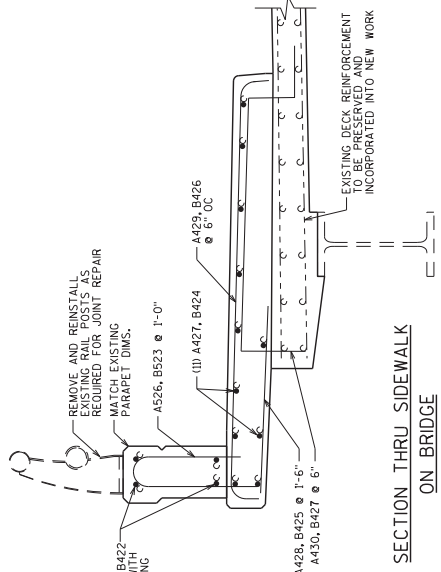
ALTERNATE STRIP SEAL ANCHOR



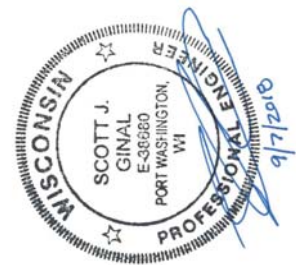
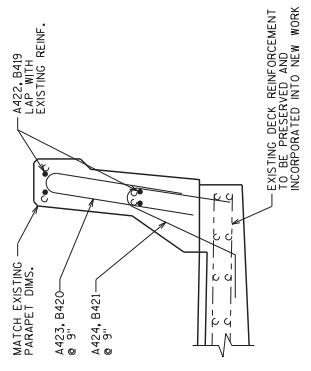
SECTION THRU JOINT
EXTERIOR ORDER TO EDGE OF SLAB & AT PARAPETS, MEDIANS & SIDEWALKS



SECTION THRU SIDEWALK
ON BRIDGE



SECTION THRU PARAPET
ON BRIDGE



William C. Decker
09/10/18

9/7/18	ADDED COVER PLATE DETAILS	S.J.G.
NO. DATE	REVISION	BY
STATE OF WISCONSIN DEPARTMENT OF TRANSPORTATION		
STRUCTURE B-40-378		
DESIGN	PREPARED	S.J.G.
JAD	CHKD.	
EXPANSION JOINT		SHEET 4 OF 1
DETAILS		137

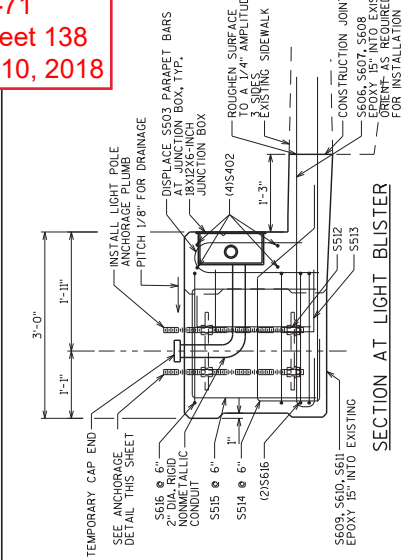
GENERAL NOTES

STEEL SPLICE (COUPLER) ASSEMBLY SHALL BE AN APPROVED TYPE AND SHALL DEVELOP IN TENSION AT LEAST 125% OF THE YIELD STRENGTH OF THE SPLICE. REINFORCEMENT BARS FOR SPLICES SHALL BE OF MINIMUM 60 KSI YIELD STRENGTH AND HAVE TENSILE STRENGTH AREA EQUAL OR GREATER THAN THAT OF THE LAPPED REINFORCEMENT BARS. DOWEL BAR SPLICES SHALL MEET THE DEFORMATION REQUIREMENTS FOR STANDARD ASTM DEFORMED REINFORCING BARS. FOR DOWEL BAR SPLICES, ALL REINFORCEMENT BARS SHALL BE LAPPED AND TIED TO THE SPLICE BARS. SPLICE COUPLER ASSEMBLY IN THE SLAB SHALL BE EPOXY COATED IN ACCORDANCE WITH THE REQUIREMENTS FOR REINFORCEMENT BARS. OTHER SYSTEMS OF SIMILAR DESIGN MAY BE SUBMITTED TO THE ENGINEER FOR APPROVAL. APPROVAL SHALL BE BASED ON CERTIFIED TEST RESULTS FROM AN APPROVED TESTING LABORATORY THAT THE PROPOSED SPLICE (COUPLER) ASSEMBLY SATISFIES THE FOLLOWING REQUIREMENT:
MINIMUM CAPACITY = 1.25 X F_y X AREA OF SPLICED REINFORCEMENT BAR.
WHERE F_y = YIELD STRENGTH OF SPLICED REINFORCEMENT BARS.

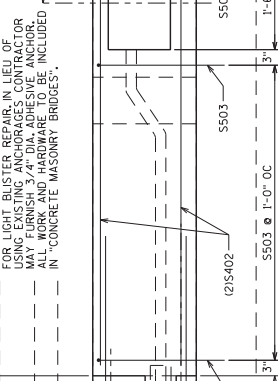
LEGEND

⑧ 1/2" DIA. THREADED ANCHOR BOLTS AS TYP. A449 OR ASSHP. A 314-90 INCLUDING NUTS & WASHERS. PROVIDE ENLARGED THREAD ON NUTS FOR PROPER FIT AFTER GALVANIZING. PROVIDE DOUBLE FLAT WASHERS & NUTS.

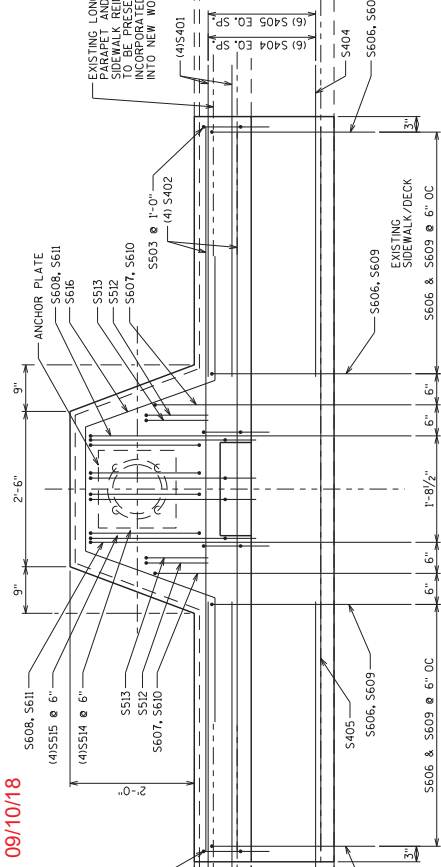
Addendum No. 01
ID 2984-38-71
Revised Sheet 138
September 10, 2018



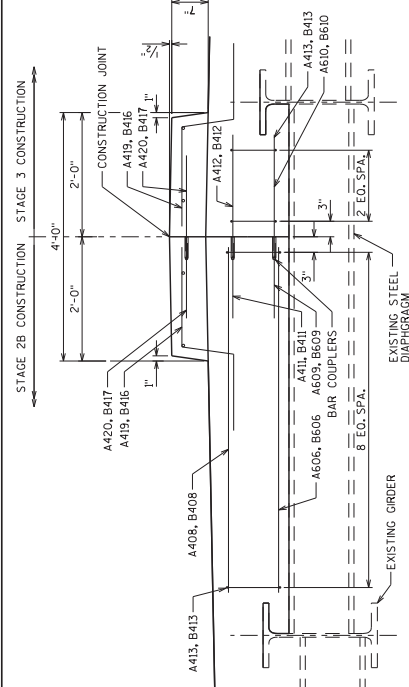
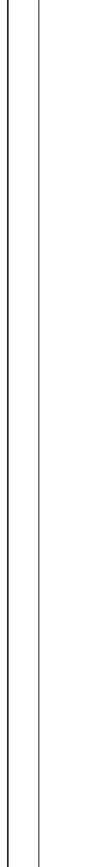
SECTION AT LIGHT BLISTER



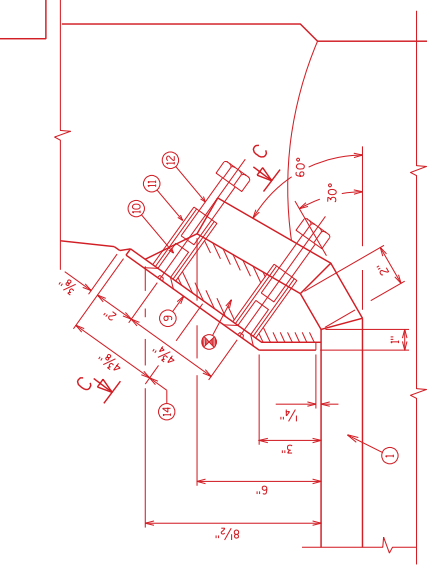
ELEVATION AT LIGHT BLISTER
(LOOKING AT INSIDE FACE OF PARAPET)



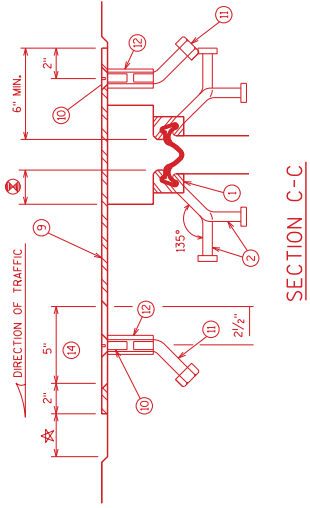
PLAN AT LIGHT BLISTER



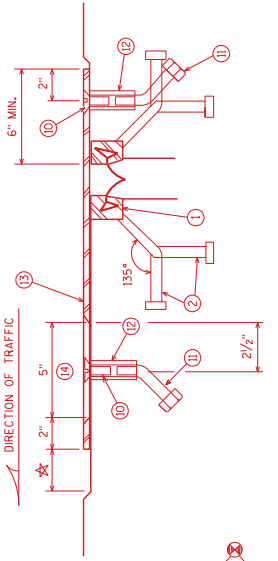
Addendum No. 01
ID 2984-38-71
Added Sheet 139A
September 10, 2018



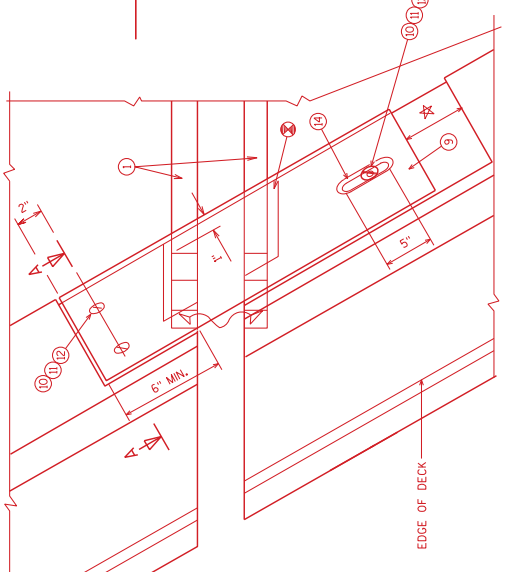
SECTION A-A
SLOPED FACE PARAPET



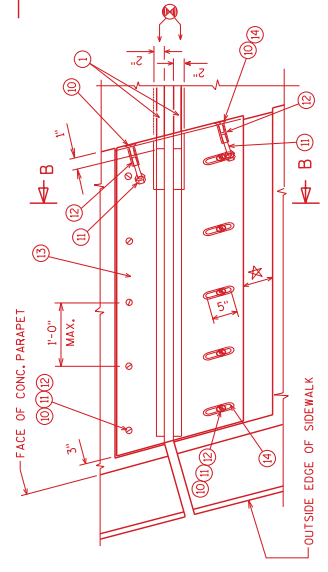
SECTION C-C



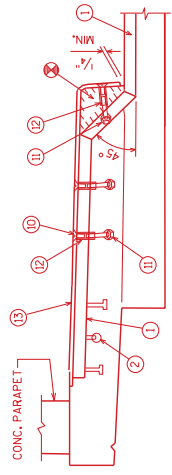
SECTION B-B



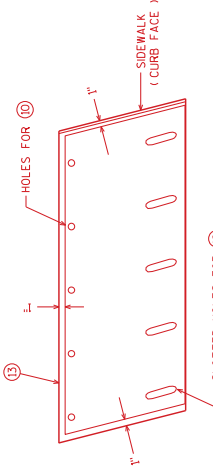
PLAN AT PARAPET
SLOPED FACE PARAPET



PLAN AT SIDEWALK



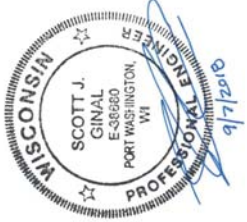
SECTION AT SIDEWALK



VIEW OF PARAPET PLATES
FROM ROADWAY
SLOPED FACE PARAPET

- LEGEND**
- 9 GALVANIZED PLATE 3/8" X 10 1/2" X 12'-2" LONG FOR SKEWS TO BE BENT 45° ALONG FOR SKEWS > 45° WITH HOLES FOR NO. 10, BEND AS SHOWN.
 - 10 3/4" DIA. X 1 1/2" STAINLESS STEEL SOCKET FLAT HEAD SCREWS RECESS 1/8" BELOW PLATE SURFACE.
 - 11 3/4" DIA. X 4" GALVANIZED HEX HEAD BOLT, BEND 45°.
 - 12 3/4" DIA. X 2 1/2" GALVANIZED THREADED COUPLING.
 - 13 SIDEWALK COVER PLATE 3/4" X 12'-0" WIDE FOR SKEWS TO BE BENT 45° WIDE FOR SKEWS > 45°. LIMITS SHOWN BENEATH FACE OF SIDEWALK WITH HOLES FOR NO. 10. GALVANIZE PLATE AFTER SLIP-RESISTANT SURFACE IS APPLIED.
 - 14 1" X 5" SLOTTED COUNTERSUNK HOLE FOR NO. 10. PLACE SLOT PARALLEL TO DIRECTION OF MOVEMENT.
 - ★ BLOCK OUT CONCRETE 2" EACH SIDE OF JOINT OPENING.
 - ☆ JOINT OPENING DIM. ALONG SKEW PLUS 1/2".

REFER TO LEGEND ON SHEET 4 FOR ADDITIONAL CALL-OUTS.



William C. Dehn
09/10/18

APPROVED SLIP-RESISTANT APPLIED SURFACES FOR STEEL PLATES	
PRODUCT	MANUFACTURER
SLIPNOT GRADE 2, STEEL ALGRP, STEEL	W. S. MOLNAR COMPANY ROSS TECHNOLOGY CORP.
CONTACT AT	1-800-SLIPNOT 1-800-345-8170

NO.	DATE	ADDED COVER PLATE DETAILS	S/J	BY
1	9/7/18			

STATE OF WISCONSIN DEPARTMENT OF TRANSPORTATION	
STRUCTURE B-40-378	
DESIGNED BY	DATE
W. S. MOLNAR	9/7/2018
S/J	
SHEET 7 OF 8	
COVER PLATE DETAILS	
139A	



NOTES

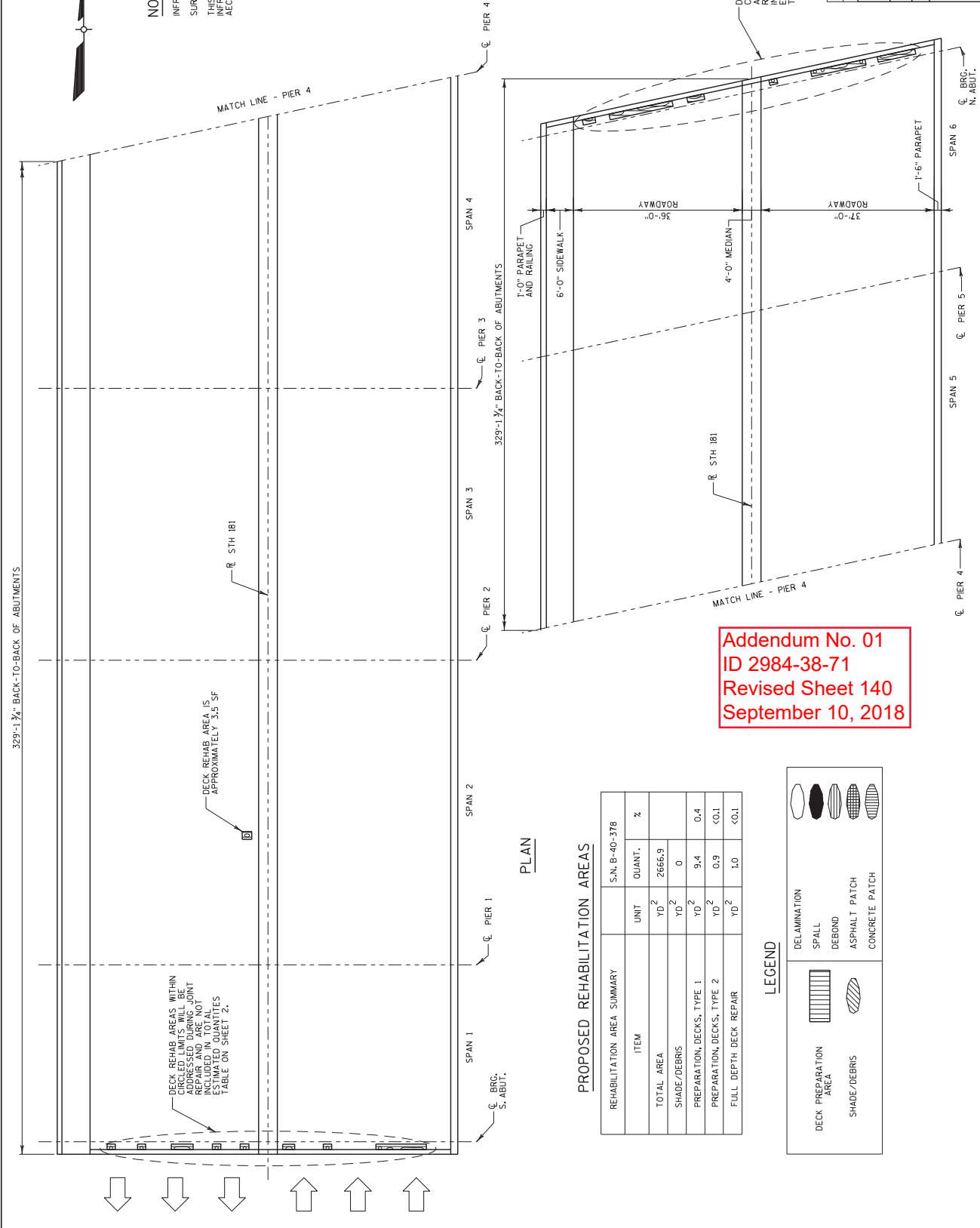
INFRARED INSPECTION DATE: 11/20/17
SURFACE TYPE: CONCRETE - NO OVERLAY
THIS DRAWING IS ADAPTED FROM ORIGINAL INFRARED DECK SURVEY PLANS PROVIDED BY ACCOM DATED 12/8/17.

William C. Decker
09/10/18



DECK REHAB AREAS WITHIN
THIS DRAWING HAVE BEEN
ADDRESSED DURING JOINT
REPAIR AND ARE NOT
INCLUDED IN TOTAL
REHAB AREAS LISTED
TABLE ON SHEET 2.

NO.	DATE	ADDED COVER PLATE DETAILS	S.J.G.
1	9/7/18		
STATE OF WISCONSIN DEPARTMENT OF TRANSPORTATION			
STRUCTURE B-40-378			
DESIGNED BY	JAD	CHECKED BY	S.J.G.
SHEET 8 OF 8			140



Addendum No. 01
ID 2984-38-71
Revised Sheet 140
September 10, 2018

PLAN

PROPOSED REHABILITATION AREAS

REHABILITATION AREA SUMMARY	ITEM	UNIT	S.N. B-40-378	
			QUANT.	%
TOTAL AREA	YD ²	2666.9		
SHADE/DEBRIS	YD ²	0		
PREPARATION, DECKS, TYPE 1	YD ²	9.4		0.4
PREPARATION, DECKS, TYPE 2	YD ²	0.9		<0.1
FULL DEPTH DECK REPAIR	YD ²	1.0		<0.1

LEGEND

	DECK PREPARATION AREA		DELAMINATION
	SHADE/DEBRIS		SPALL
			DEBOND
			ASPHALT PATCH
			CONCRETE PATCH

