



# Wisconsin Department of Transportation

## Division of Transportation Systems Development

Bureau of Project Development  
4822 Madison Yards Way, 4<sup>th</sup> Floor South  
Madison, WI 53705

Telephone: (608) 266-1631  
Facsimile (FAX): (608) 266-8459

November 20, 2018

### NOTICE TO ALL CONTRACTORS:

**Proposal #28: 1633-06-74, WISC 2019 016**  
**Galesville - Whitehall**  
**Branch North Fk Beaver Cr B-61-0238**  
**USH 53**  
**Trempealeau County**

### Letting of December 11, 2018

This is Addendum No. 01, which provides for the following:

#### Plan Sheets:

Revised Plan Sheets	
Plan Sheet	Plan Sheet Title (brief description of changes to sheet)
115-129	Structure B-61-0238 (online plans are unreadable)

#### **Plan Sheets**

The following 8½ x 11-inch sheets are attached and made part of the plans for this proposal:  
Revised: 115 - 129

The responsibility for notifying potential subcontractors and suppliers of these changes remains with the prime contractor.

Sincerely,

*Mike Coleman*

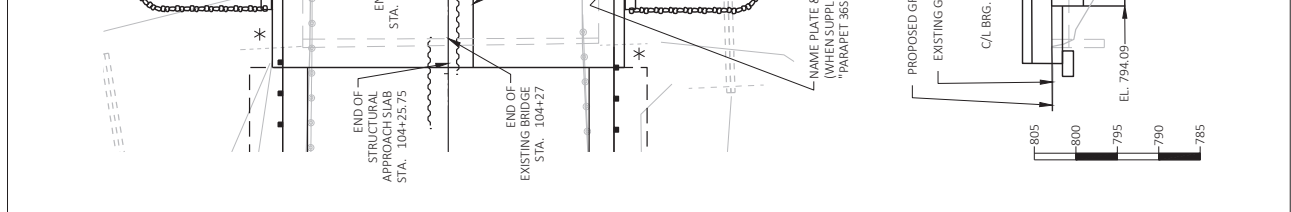
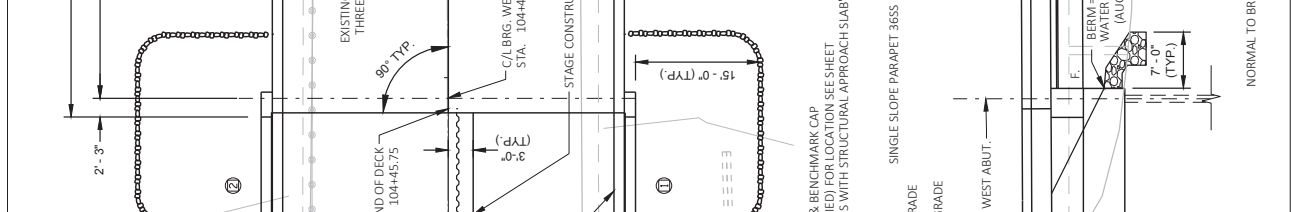
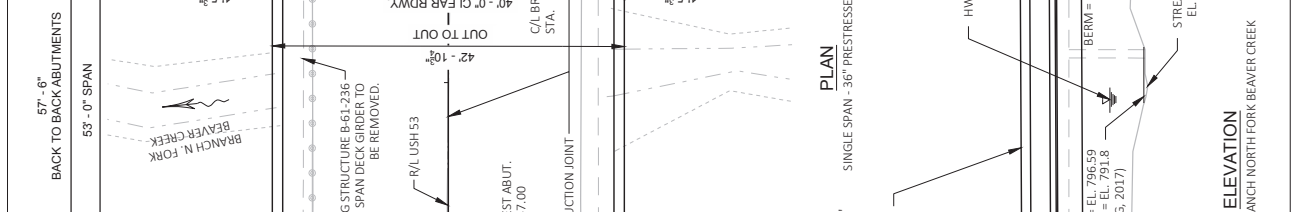
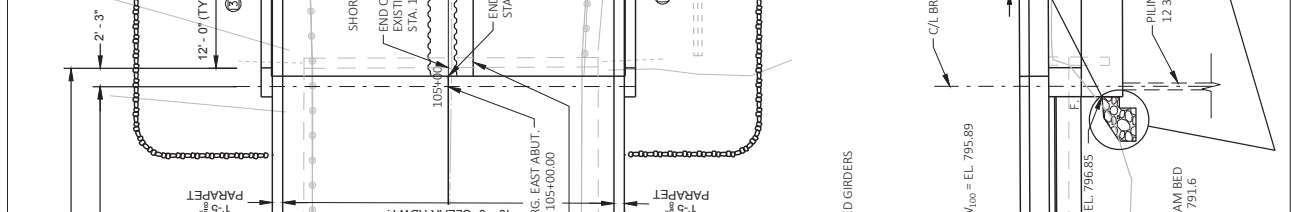
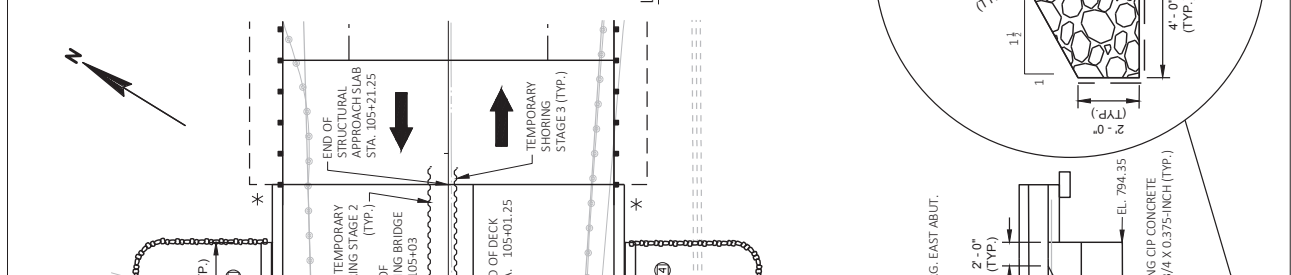
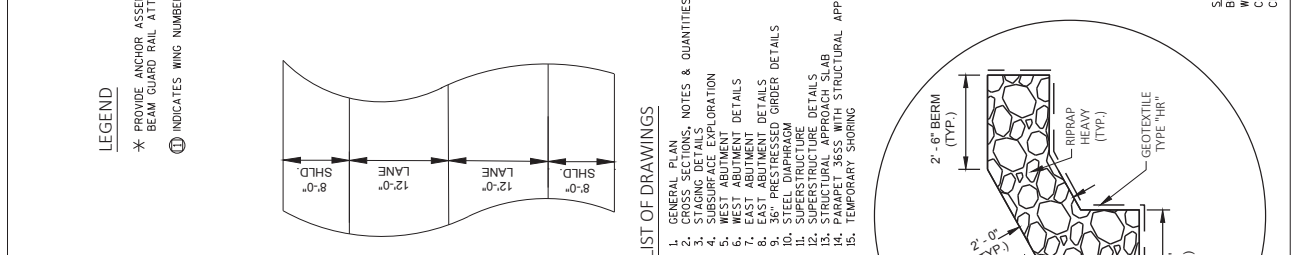
Proposal Development Specialist  
Proposal Management Section

END OF ADDENDUM

**Addendum No. 01**  
**ID 1633-06-74**  
**Revised Sheet 115**  
**November 20, 2018**

STATE PROJECT NUMBER 1633-06-74	
<b>DESIGN DATA</b> LIVE LOAD: HL-93 DESIGN CONCRETE STRENGTH: F <sub>c</sub> = 4,000 P.S.I. OPERATING FACTOR: RF=1.5 WISCONSIN STANDARD PERMIT VEHICLE (WIS-SPV) = 220 KIPS STRUCTURE IS DESIGNED FOR A FUTURE WEARING SURFACE OF 20 POUNDS PER SQUARE FOOT. <b>MATERIAL PROPERTIES:</b> CONCRETE MASONRY SUPERSTRUCTURE.....F <sub>c</sub> = 4,000 P.S.I. CONCRETE MASONRY SUBSTRUCTURE.....F <sub>c</sub> = 3,000 P.S.I. 60% STEEL FIBER CONCRETE.....F <sub>c</sub> = 4,000 P.S.I. 36" PRESTRESSED CONCRETE MASONRY.....F <sub>c</sub> = 8,000 P.S.I. STRANDS-0.5" DIA. WITH U.L.T. TENSILE STRENGTH OF 270,000 P.S.I.	
<b>TRAFFIC VOLUME</b> USH 53 A.A.D.T. = 5,700 (2040) RDS = 60 MPH	
<b>HYDRAULIC DATA</b> 100-YEAR FREQUENCY Q <sub>100</sub> = 440 C.F.S. V <sub>100</sub> = 5.9 F.P.S. H.W. = ELEV. 795.89 WATERWAY AREA = 74 SQ. FT. DRAINAGE AREA = 117 SQ. MI. SCOUR CRITICAL CODE = 5	
<b>FOUNDATION DATA</b> ABUTMENTS TO BE SUPPORTED ON PILING CAP CONCRETE 18 3/4" X 0.315-INCH DIAMETER PILES WITH 100-TONS OF FORMALIN ESTIMATED 95-FT LONG AT WEST ABUTMENT AND 75-FT LONG AT EAST ABUTMENT. ** THE FACTORED AXIAL RESISTANCE OF PILES IN COMPRESSION USED FOR DESIGN OF 0.60 USING MODIFIED GATES TO DETERMINE DRIVEN PILE CAPACITY.	

<b>LEGEND</b> * PROVIDE ANCHOR ASSEMBLY FOR THREE BEAM GUARD RAIL ATTACHMENT (1) INDICATES WING NUMBER	
<b>LIST OF DRAWINGS</b> 1. GENERAL PLAN 2. STAGING DETAILS 3. SUBSURFACE EXPLORATION 4. WEST ABUTMENT DETAILS 5. EAST ABUTMENT DETAILS 6. WEST ABUTMENT DETAILS 7. EAST ABUTMENT DETAILS 8. WEST ABUTMENT DETAILS 9. 36" PRESTRESSED GIRDER DETAILS 10. STEEL DIAPHRAGM DETAILS 11. SUPERSTRUCTURE DETAILS 12. SUPERSTRUCTURE DETAILS 13. STRUCTURAL APPROACH SLAB 14. PARAPET 36SS WITH STRUCTURAL APPROACH SLAB 15. TEMPORARY SHORING	



NO. DATE	REVISION	BY
8		

**Engineering**  
 STATE OF WISCONSIN  
 DEPARTMENT OF TRANSPORTATION  
 ACCEPTED: *William D. Decker* DATE: 08/02/18  
 CHIEF STRUCTURES DESIGN ENGINEER  
 STRUCTURE B-61-238  
 COUNTY TREMPEALEAU TOWN/SHIP/WENOME ETTRICK  
 DESIGN SPEC U5H 53 OVER BRANCH N. FORK BEAVER CREEK  
 AASHO LRFD DESIGN SPEC BR/MS  
 APPROVED CDH (RCD) CAH (BY) BR/MS  
 CDH (RCD) JAL (CD) CDH  
 SHEET 1 OF 15  
 GENERAL PLAN 115

STRUCTURE DESIGN CONTACTS  
 WILLIAM DREGER  
 CONSULTANT: (608) 266-8489  
 CHAD HALVERSON (608) 663-1218

PROFESSORIAL ENGINEER  
 CHAD D. HALVERSON  
 E-34364  
 MADISON, WI  
 JUNE 19, 2018  
 PLOT DATE: 6/19/2018 7:30 AM  
 PLOT BY: KLE ENGINEERING  
 FILE NAME: G:\WDOT\CO\16048\2018\DESIGN\WO\16048-00\T\LEVEL\SD\STRUCTURE CAD\0601-01-0P.DWG

**GENERAL NOTES**

DRAWINGS SHALL NOT BE SCALED.  
BAR STEEL REINFORCEMENT SHALL BE EMBEDDED 2" CLEAR UNLESS OTHERWISE SHOWN OR NOTED.  
THE FIRST OR FIRST TWO DIGITS OF THE BAR MARK SIGNIFIES THE BAR SIZE.

▲ AT THE BACKFACE OF ABUTMENT ALL VOLUME (WITHIN THE PAY LIMITS SHOWN BELOW) WHICH CANNOT BE PLACED BEFORE ABUTMENT CONSTRUCTION AND IS NOT OCCUPIED BY THE NEW STRUCTURE SHALL BE BACKFILLED WITH STRUCTURAL BACKFILL.

ELASTOMERIC BEARINGS NEED NOT BE INDIVIDUALLY MOLDED PROVIDED THE CUT EDGES ARE SMOOTH AND TRUE.

PROTECTIVE SURFACE TREATMENT TO BE APPLIED TO THE ENTIRE TOP OF DECK SURFACE AND STRUCTURAL APPROACH SLABS.

PIGMENTED SURFACE SEALER TO BE APPLIED TO THE FRONT FACE AND TOP OF THE PARAPETS.

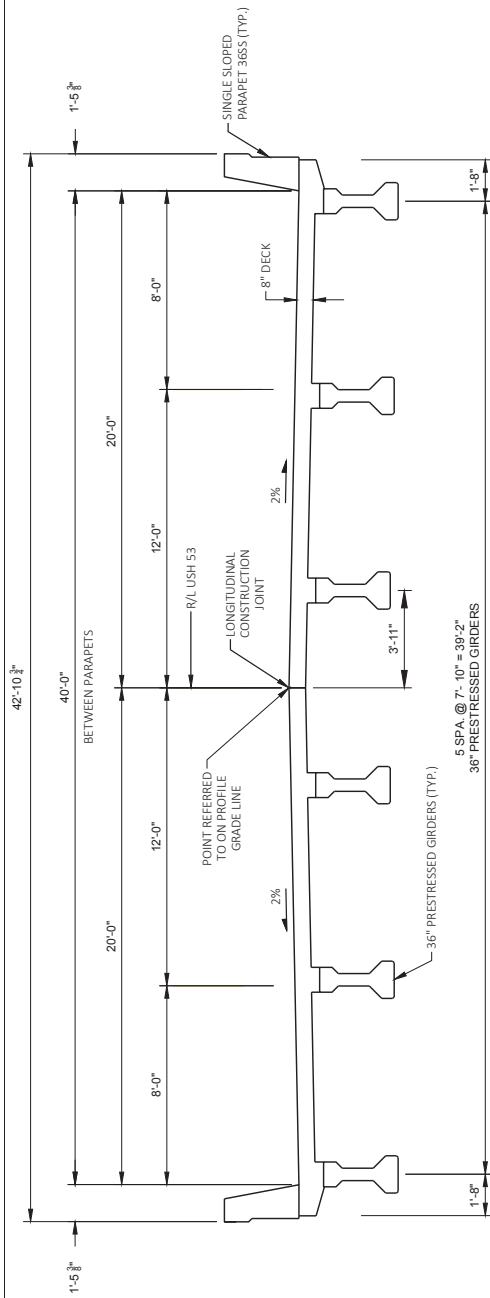
THE SLOPE OF THE FILL IN FRONT OF THE ABUTMENTS SHALL BE COVERED WITH HEAVY RIPRAP AND GEOTEXTILE TYPE "HR" TO THE EXTENT SHOWN ON SHEET 1 AND IN THE ABUTMENT DETAILS.

THE EXISTING STRUCTURE B-61-236, IS A THREE-SPAN DECK GIRDER BRIDGE WITH A WIDTH OF 36 FT AND A LENGTH OF 76 FT IS TO BE REMOVED.

ALL FIELD CONNECTIONS SHALL BE MADE WITH 3/4" DIAMETER FRICTION TYPE HIGH-TENSILE STRENGTH BOLTS UNLESS SHOWN OR NOTED OTHERWISE.

THE HAUNCH CONCRETE QUANTITY IS BASED ON THE AVERAGE HAUNCH SHOWN ON THE PRESTRESSED GIRDER SHEET.

THE EXISTING GROUND LINE SHALL BE THE UPPER LIMITS OF THE EXCAVATION FOR STRUCTURES.



**PROPOSED CROSS SECTION**  
(LOOKING EAST)

**BENCHMARK TABLE**

NO.	STATION	OFFSET	DESCRIPTION	ELEV.
BM-1	105+46	38.9' LT	SURVEY NAIL IN PPOL #15742	802.97
BM-2	105+55	61.0' RT	SURVEY NAIL IN PPOL	804.50
BM-20	99+07	36.7' LT	RR SPIKE IN WOOD POST W/METER	802.49
BM-21	109+18	41.7' LT	RR SPIKE IN PPOL #15741	804.70

**TOTAL ESTIMATED QUANTITIES**

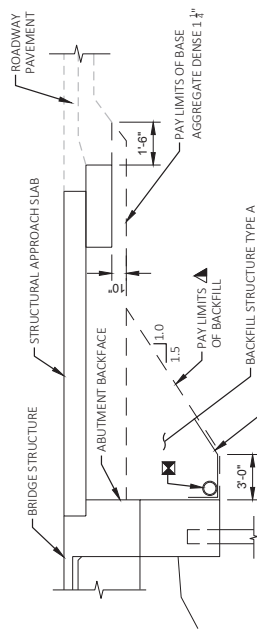
ITEM NUMBER	ITEM DESCRIPTION	UNIT	E. ABUT	W. ABUT	SUPER.	STRUCT. APPR. SLAB	TOTAL
203.0210.S	ABATEMENT OF ASBESTOS CONTAINING MATERIAL B-61-236	LS	---	---	---	---	1
203.0600.S	REMOVING OLD STRUCTURE OVER WATERWAY WITH MINIMAL DEBRIS 104+66	LS	---	---	---	---	1
206.0000	EXCAVATION FOR STRUCTURES BRIDGES B-61-238	LS	---	---	---	---	1
210.1600	BACKFILL STRUCTURE TYPE A	TON	128	128	---	---	256
305.0120	BASE AGGREGATE DENSE 1 1/4-INCH	TON	---	---	266	---	266
502.0100	CONCRETE MASONRY BRIDGES	CY	48	49	110	---	324
502.3200	PROTECTIVE SURFACE TREATMENT	SY	---	---	269	---	269
502.3210	PIGMENTED SURFACE SEALER	SY	---	---	50	---	86
503.0136	PRESTRESSED GIRDER TYPE I, 36-INCH	LF	---	---	324	---	324
505.0400	BAR STEEL REINFORCEMENT HS STRUCTURES	LB	2,710	2,710	5,420	---	5,420
505.0600	BAR STEEL REINFORCEMENT HS COATED STRUCTURES	LB	1,700	1,700	20,470	20,130	44,000
505.0800.S	BAR STEEL REINFORCEMENT HS STAINLESS STRUCTURES	LB	---	---	1,470	---	1,470
505.0905	BAR COUPLERS NO. 5	EACH	---	---	205	---	289
505.0906	BAR COUPLERS NO. 6	EACH	18	18	20	---	56
505.0908	BAR COUPLERS NO. 8	EACH	---	---	---	24	24
505.2605	BEARING PADS ELASTOMERIC NON-LAMINATED	EACH	---	---	---	---	12
505.4000	STEEL DIAPHRAGMS B-61-238	EACH	---	---	5	---	5
511.1200	TEMPORARY SHORING B-61-238	SF	281	237	---	---	518
516.0500	RUBBERIZED MEMBRANE WATERPROOFING	SY	13	13	---	---	26
550.2126	PILING CIP CONCRETE 12.3/4 X 0.375 INCH	LF	450	570	---	---	1,020
606.0300	RRAP HEAVY	CY	94	94	---	---	188
612.0406	PIPE UNDERDRAIN WRAPPED 6-INCH	LF	115	115	---	---	230
614.0150	ANCHOR ASSEMBLY FOR STEEL PLATE BEAM GUARD	EACH	---	---	---	4	4
645.0111	GEOTEXTILE TYPE DF SCHEDULE A	SY	35	35	---	---	70
645.0120	GEOTEXTILE TYPE HR	SY	164	164	---	---	328
	FILLER	SIZE					1/2" & 3/4"

**LEGEND**

▲ BACKFILL PAY LIMITS, BACKFILL BEHIND BACKFILL PAY LIMITS SHALL BE INCIDENTAL TO EXCAVATION FOR STRUCTURES. LIMITS OF EXCAVATION SHALL BE DETERMINED BY THE CONTRACTOR.

☒ PIPE UNDERDRAIN WRAPPED (6-INCH), SLOPE 0.5% MIN. TO SUITABLE DRAINAGE. ATTACH RODENT SHIELD AT ENDS OF PIPE UNDERDRAIN.

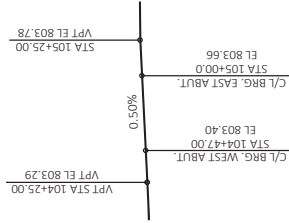
**PROPOSED CROSS SECTION**  
(LOOKING EAST)



**Addendum No. 01**  
**ID 1633-06-74**  
**Revised Sheet 116**  
**November 20, 2018**

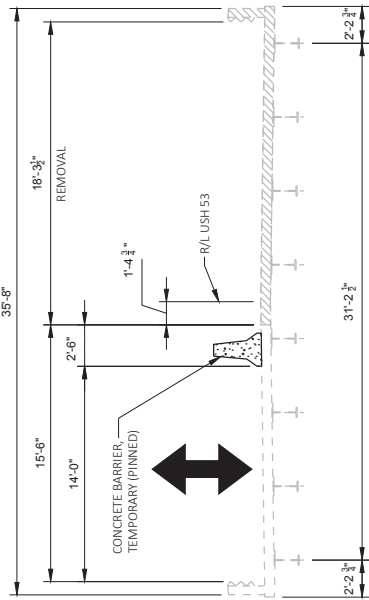
**TYPICAL SECTION THRU ABUTMENT**

"GEOTEXTILE TYPE DF SCHEDULE A" LIMITS, EXTEND 2'-0" ABOVE BOTTOM OF ABUTMENT FOR THE ENTIRE ABUTMENT BODY LENGTH.

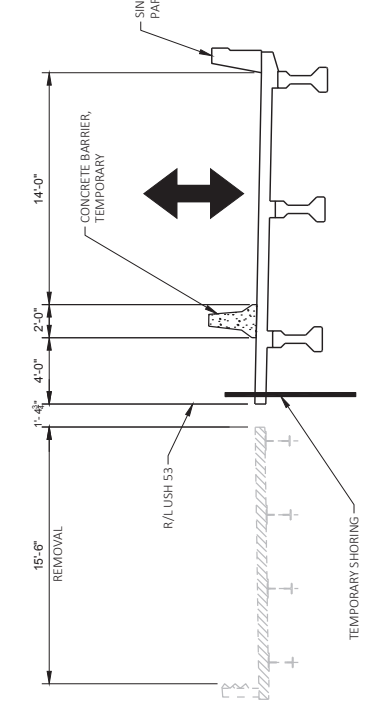


**PROFILE GRADE LINE R/L USH 53**

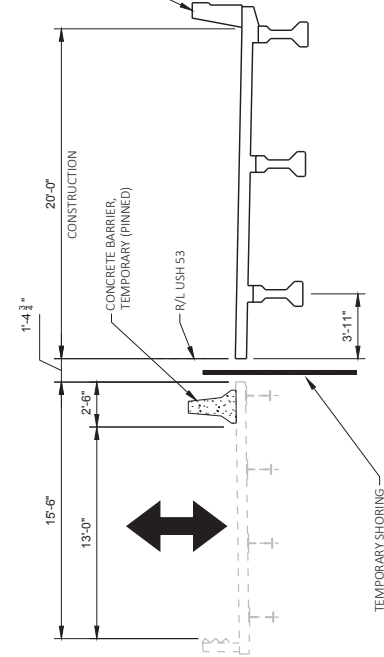
NO.	DATE	REVISION	BY
		STATE OF WISCONSIN DEPARTMENT OF TRANSPORTATION	
		STRUCTURE B-61-238	
		DESIGNED BY: JAL	CDH
		CHECKED BY: JAL	CDH
		CROSS SECTIONS, NOTES & QUANTITIES	
		SHEET 2 OF 15	
		116	



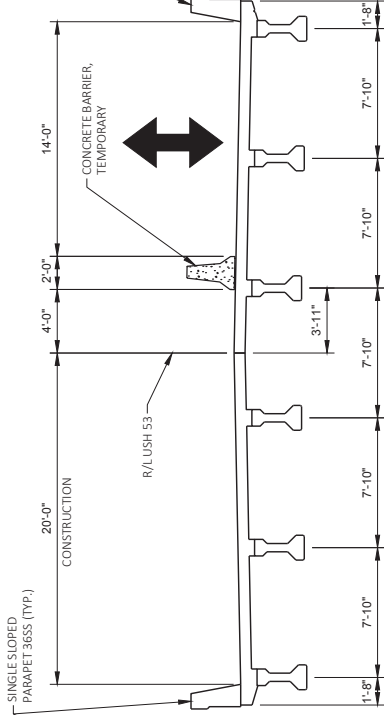
STAGE 2 - REMOVAL  
(LOOKING EAST)



STAGE 3 - REMOVAL  
(LOOKING EAST)



STAGE 2 - CONSTRUCTION  
(LOOKING EAST)



STAGE 3 - CONSTRUCTION  
(LOOKING EAST)

Addendum No. 01  
ID 1633-06-74  
Revised Sheet 117  
November 20, 2018

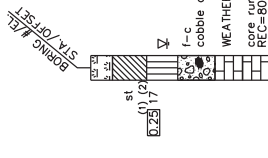
NO.	DATE	REVISION	BY
STATE OF WISCONSIN DEPARTMENT OF TRANSPORTATION			
STRUCTURE B-61-238			
DRAWN BY: JAL		CHECKED BY: CDH	
STAGING DETAILS			SHEET 3 OF 15
			117

STATE PROJECT NUMBER  
1633-06-74

**MATERIAL SYMBOLS**

ASPHALT	CONCRETE	SAND	boulders or cobbles	shale
TOPSOIL	FILL	CLAY	LIMESTONE	SANDSTONE
PEAT	GRAVEL	SILT	BEDROCK (unknown)	IGNEOUS/meta

**LEGEND OF BORING**

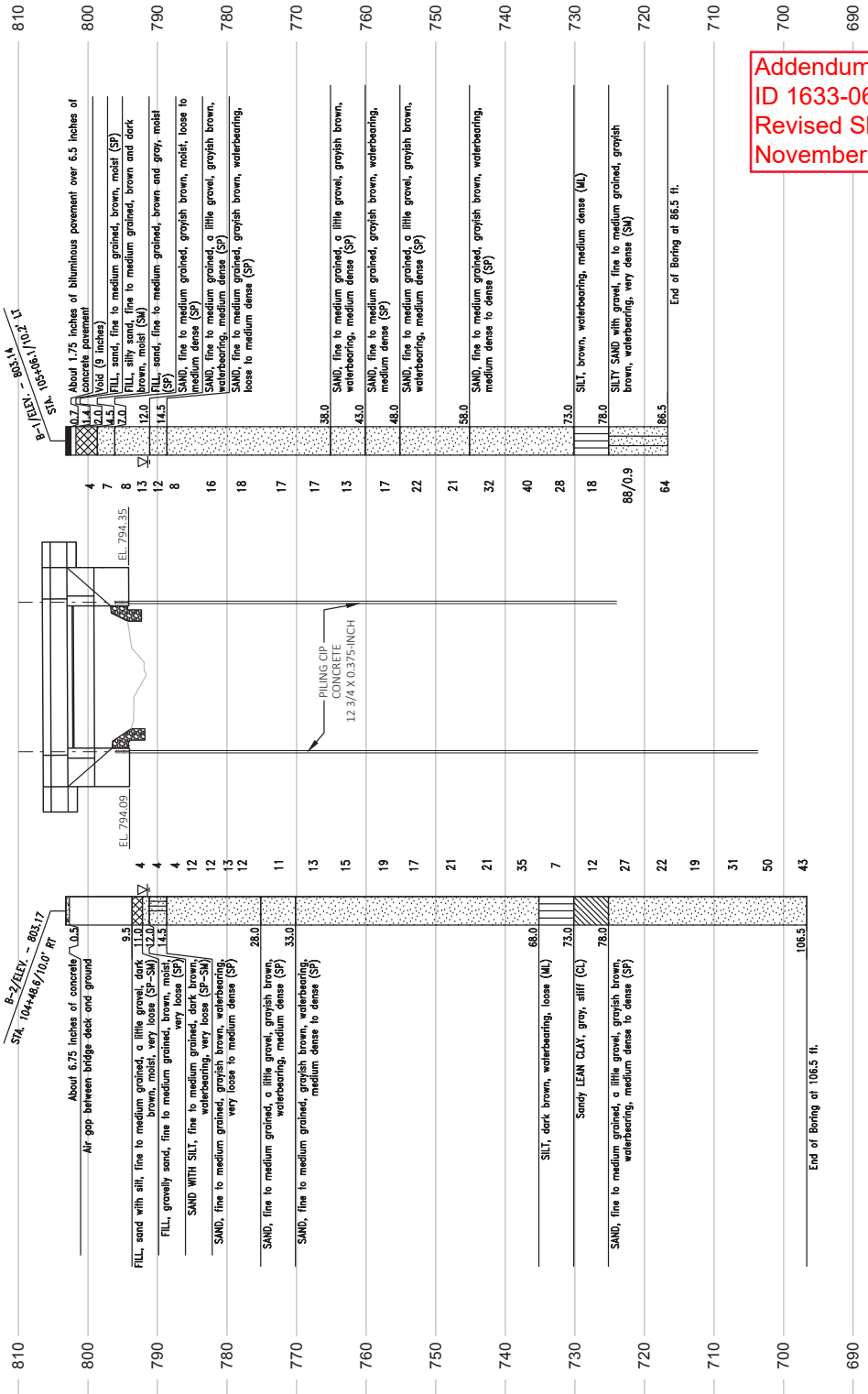
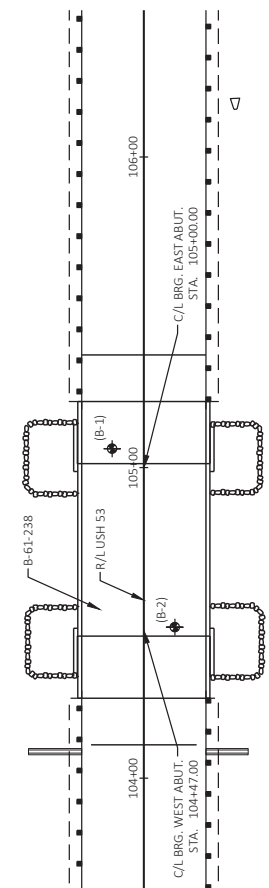
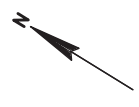


(1) Unconfined STRENGTH, as determined by a pocket penetrometer (psi)  
 (2) UNLESS OTHERWISE SPECIFIED THE SPT "N" VALUE IS BASED ON A 140 LB. HAMMER AND STANDARD PENDRUM. THE SPT "N" VALUE HAS BEEN CORRECTED FOR OVERBURDEN PRESSURE OR HAMMER EFFICIENCY.  
 around water elevation  
 ▽ at time of drilling  
 ▽ end of drilling  
 ▽ after drilling

ABBREVIATIONS  
 F—Fine M—Medium C—Coarse st—shelby tube  
 SUBSURFACE EXPLORATION FOR FOUNDATION DESIGN AND BIDDERS INFORMATION

Borings were completed at points approximately as indicated on this drawing to obtain information on the subsurface conditions. Because the investigated depths are limited and the area of the borings is very small in relation to the entire site, these borings do not warrant similar subsurface conditions below, or beyond these borings. Variations in soil conditions should be expected and fluctuations in groundwater levels may occur.

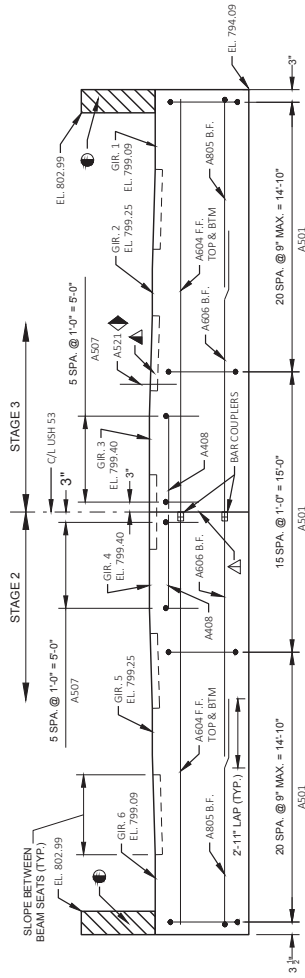
NO. DATE	REVISION	BY
STATE OF WISCONSIN DEPARTMENT OF TRANSPORTATION		
STRUCTURE B-61-238		
DRAWN BY: JAL CHECKED BY: CDH		
SHEET: 4 OF 15		
SUBSURFACE EXPLORATION		118



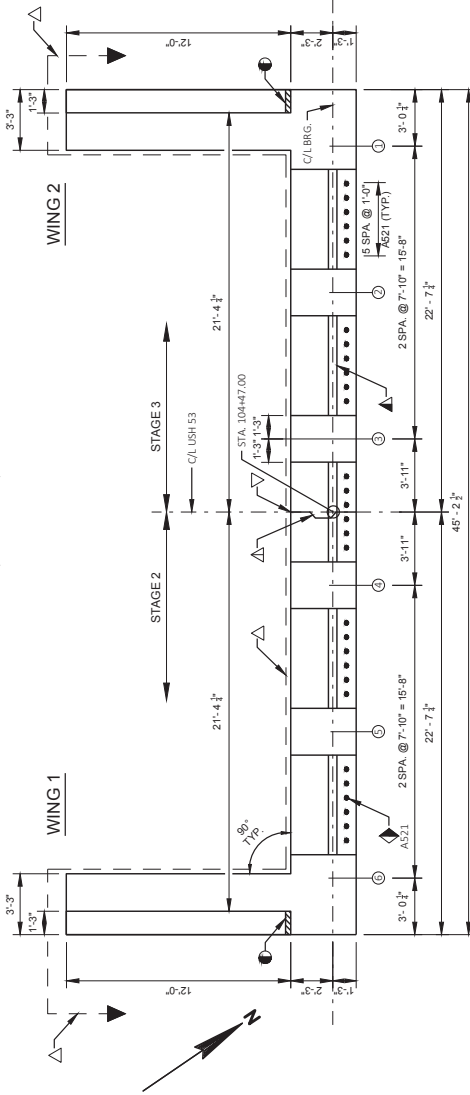
Addendum No. 01  
ID 1633-06-74  
Revised Sheet 118  
November 20, 2018

BORING #	DATE COMPLETED	NORTHING (Y)	EASTING (X)
B-1	9/22/2017	378497.40	875892.60
B-2	9/21/2017	378450.03	875854.26

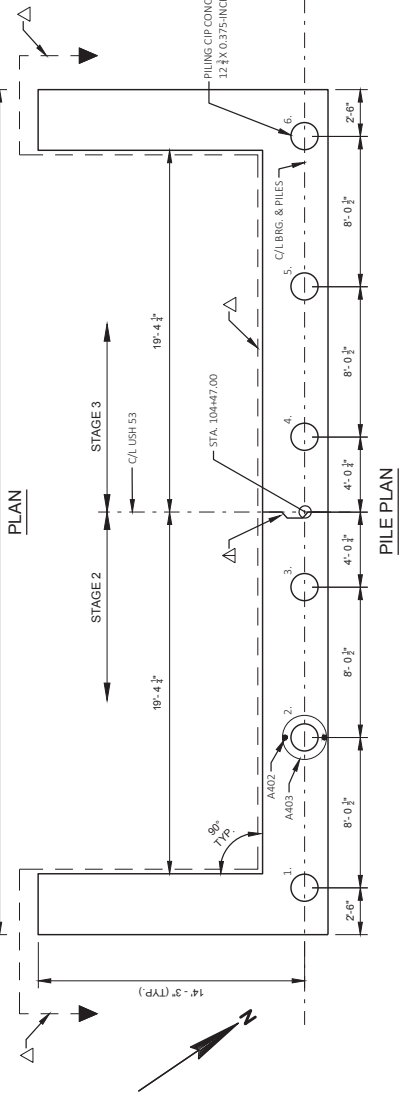
REPORT COMPLETED BY: AMERICAN ENGINEERING TESTING, INC.  
 ALL COORDINATES REFERENCED TO WCCS NAD TREMPALEAU COUNTY



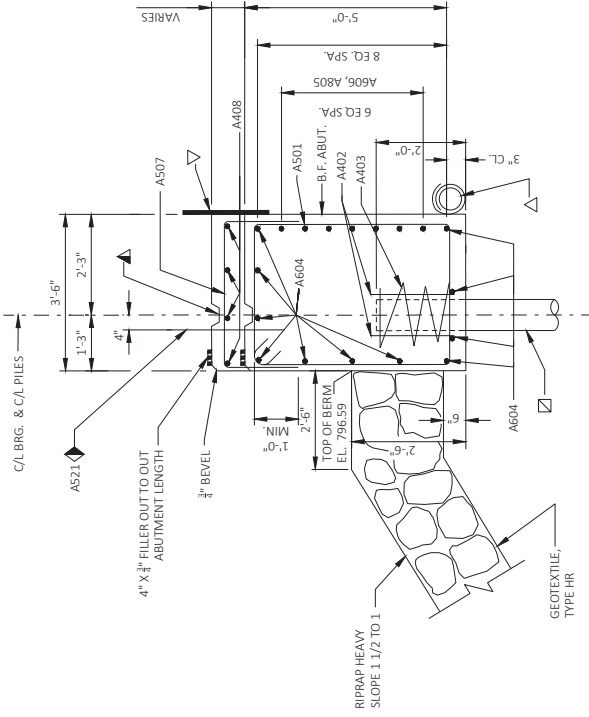
ELEVATION  
(LOOKING WEST)



PLAN



PILE PLAN



SECTION THRU BODY

LEGEND

- ▲ A521 BARS (COATED AT 11.0") (24.0" LONG) THESE BARS MAY BE PLACED AFTER CONCRETE IS POURED BUT BEFORE INITIAL SET HAS TAKEN PLACE.
- ▲ KEVED CONSTRUCTION JOINT FORMED BY A BEVELED 2" X 6"
- ▲ VERT. CONSTRUCTION JOINT: KEYWAY FORMED BY A BEVELED 2" X 8". 3/4" "V" GROOVE @ THE FRONT FACE AND 18" R.M.W. @ BACKFACE.
- ▣ ABUTMENTS TO BE SUPPORTED ON PILING CIP CONCRETE 12 X 14 X 0.375 INCH DRIVEN TO REQUIRED DRIVING RESISTANCE OF 210 TONS PER PILE AS DETERMINED BY THE MODIFIED GATES DYNAMIC FORMULA. ESTIMATED 95- FT LONG AT WEST ABUTMENT.
- △ PIPE UNDER DRAIN WRAPPED (6-INCH). SLOPE 0.5% MIN. TO SUITABLE DRAINAGE. RODENT SCREEN REQUIRED. SEE DETAIL ON "EAST ABUTMENT DETAILS" SHEET.
- 1/2" FILLER (INCLUDED IN WING LENGTH); SEAL ALL EXPOSED HORIZ. & VERT. SURFACES OF 1/2" FILLER WITH NON-STAINING GRAY NON BITUMINOUS JOINT SEALER. (1" DEEP AND HOLD 1/8" BELOW SURFACE OF CONCRETE). EXTEND SEALER 3" BELOW GUTTER LINE AT INSIDE FACE.
- ▽ 18" (R/W) RUBBERIZED MEMBRANE WATERPROOFING SEAL ALL HORIZ. & VERT. JOINTS AT BACKFACE.

Addendum No. 01  
ID 1633-06-74  
Revised Sheet 119  
November 20, 2018

NO.	DATE	REVISION	BY
STATE OF WISCONSIN DEPARTMENT OF TRANSPORTATION			
STRUCTURE B-61-238			
		DESIGNED BY	JKANS
		DRAWN BY	JAL
		CHECKED BY	CDH
		SHEET	5 OF 15
		<b>119</b>	
		WEST ABUTMENT	

STATE PROJECT NUMBER  
1633-06-74

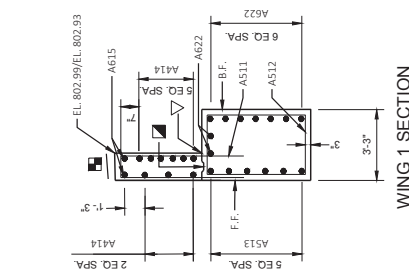
TOTAL COATED = 1,700 LBS  
TOTAL UNCOATED = 2,710 LBS

Addendum No. 01  
ID 1633-06-74  
Revised Sheet 120  
November 20, 2018

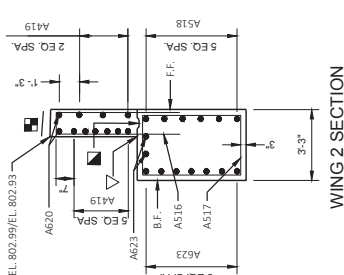
W. ABUT BILL OF BARS

BAR MARK	NO. REQD.		LENGTH	CONT.	STAINLESS STEEL	BENT	BAR SERIES	LOCATION
	STAGE 2	STAGE 3						
A501	28	28	16'-0"			X	BODY - STIRRUPS	
A402	6	6	2'-3"			X	PILES - 2 PER BODY PILE	
A403	3	3	28'-0"			X	PILES - 1 PER BODY PILE	
A604	11	11	22'-5"			X	ABUT BODY - HORIZ. - TOP F.F. BTM	
A605	7	7	13'-2"			X	ABUT BODY - HORIZ. - B.F.	
A606	7	7	13'-4"			X	ABUT BODY - HORIZ. - B.F.	
A507	6	6	5'-11"			X	ABUT BODY - VERT. - TOP	
A408	4	4	5'-0"			X	ABUT BODY - HORIZ. - TOP	
A409	4	4	4'-6"			X	ABUT BODY - VERT. - ENDS	
A511	17	--	12'-4"	X		X	WING 1 - VERTICAL	
A512	13	--	15'-8"	X		X	WING 1 - STIRRUP	
A513	6	--	15'-0"	X		X	WING 1 - HORIZONTAL	
A414	9	--	11'-7"	X		X	WING 1 - HORIZONTAL	
A615	2	--	11'-7"	X		X	WING 1 - HORIZONTAL TOP	
A516	--	17	12'-4"	X		X	WING 2 - VERTICAL	
A517	--	13	15'-8"	X		X	WING 2 - STIRRUP	
A518	--	6	15'-0"	X		X	WING 2 - HORIZONTAL	
A419	--	9	11'-7"	X		X	WING 2 - HORIZONTAL	
A620	--	2	11'-7"	X		X	WING 2 - HORIZONTAL TOP	
A521	15	15	2'-0"	X		X	ABUT. VERT. DOWEL	
A622	9	--	14'-0"	X		X	WING 1 - HORIZONTAL	
A623	--	9	14'-0"	X		X	WING 2 - HORIZONTAL	

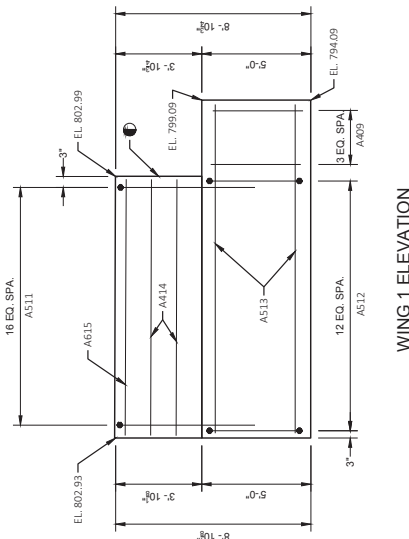
BENDING DIMENSIONS ARE OUT TO OUT OF BARS.



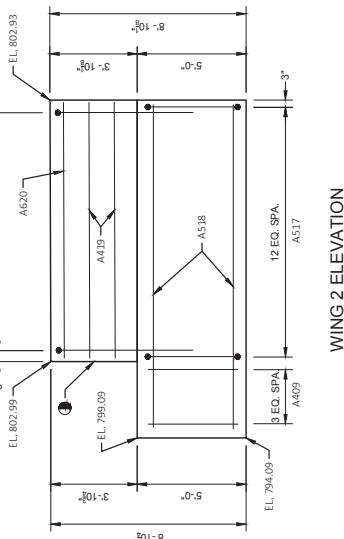
WING 1 SECTION



WING 2 SECTION



WING 1 ELEVATION



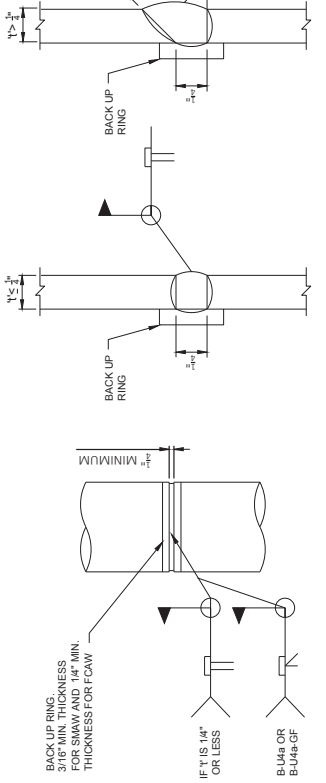
WING 2 ELEVATION

LEGEND

- ▣ SLOPE 2% FOR DRAINAGE
- ◀ BAR LENGTH HAS BEEN COMPUTED TO THE C/C OF CONSTRUCTION JOINT AND THE C/C OF CONSTRUCTION JOINT FOR MANUFACTURE RECOMMENDATIONS.
- ◉ 1/2" (RMW) RUBBERIZED MEMBRANE WATERPROOFING SEAL ALL HORIZ. & VERT. JOINTS AT BACKFACE.
- OPTIONAL CONST. JOINT: KEYWAY FORMED BY A BEVELED 2" X 6" (R.M.W. @ BACKFACE & 3/4" X 6" GROOVE @ FRONTFACE IF JOINT IS USED).
- ◉ 1/2" FILLER (INCLUDED IN WING LENGTH): SEAL ALL EXPOSED HORIZ. & VERT. SURFACES OF 1/2" FILLER WITH 18" (RMW) RUBBERIZED MEMBRANE SEALER (1" DEEP HOLD 1/8" BELOW SURFACE OF CONCRETE). EXTEND SEALER 3" BELOW GUTTER LINE AT INSIDE FACE.

NOTES

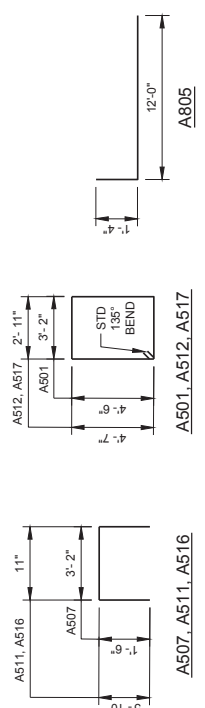
ABUTMENTS TO BE SUPPORTED ON PILING CIP CONCRETE 12-3/4 X 0.375-INCH DRIVEN TO A REQUIRED DRIVING RESISTANCE OF 210 TONS\*\* PER PILE AS DETERMINED BY THE MODIFIED GATES DYNAMIC FORMULA. ESTIMATED 95-FEET LONG AT WEST ABUTMENT.



C.I.P. PILE WELD DETAIL

CAST-IN-PLACE PIPE PILE

PILE DETAILS



A501, A512, A517

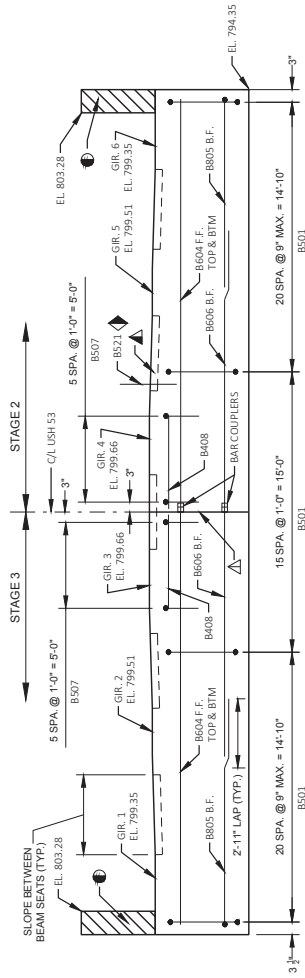
A511, A516

A507

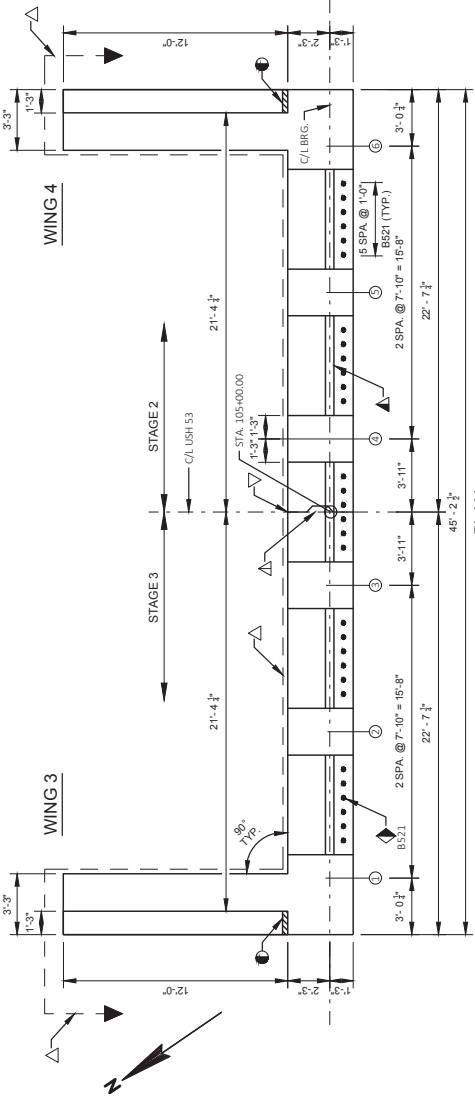
PLOT BY: KL ENGINEERING

PLOT DATE: 6/18/2018 2:10 PM

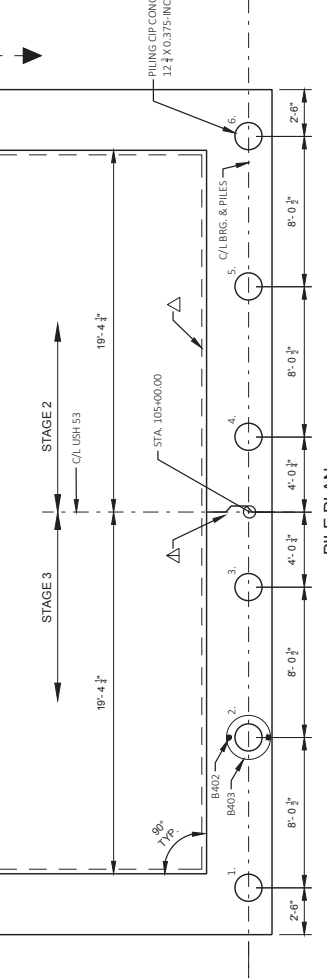
FILE NAME: G:\WDDT001\16048\16048-2018\DESIGN\W01\16048-00\LOVE\STRUCTURE\CAD\060106-WABUT-DET.DWG



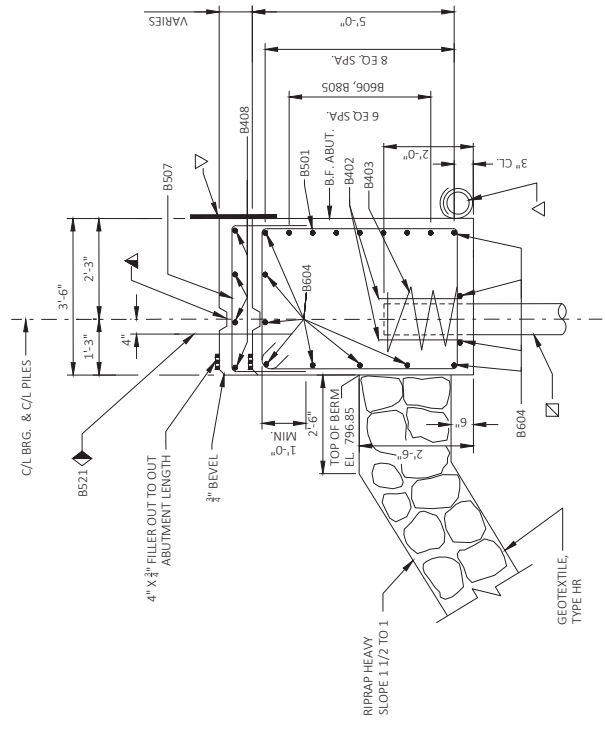
ELEVATION  
(LOOKING EAST)



PLAN



PILE PLAN



SECTION THRU BODY

Addendum No. 01  
ID 1633-06-74  
Revised Sheet 121  
November 20, 2018

LEGEND

- ◆ B521 BARS (COATED AT 1'-0" (2'-0" LONG) THESE BARS MAY BE PLACED AFTER CONCRETE IS POURED BUT BEFORE INITIAL SET HAS TAKEN PLACE.
- ▲ KEVED CONSTRUCTION JOINT FORMED BY A BEVELED 2" X 6"
- △ VERT. CONSTRUCTION JOINT. KEYWAY FORMED BY A BEVELED 2" X 8", 3/4" X 1/2" GROOVE @ THE FRONT FACE AND 18" R.M.W. @ BACKFACE.
- ◻ ABUTMENTS TO BE SUPPORTED ON PILING CIP CONCRETE 12 3/4 X 0.375-INCH DRIVEN TO A REQUIRED DRIVING RESISTANCE OF 210 TONS PER PILE AS DETERMINED BY THE MODIFIED GATES DYNAMIC ABUTMENT.
- △ PIPE UNDER DRAIN WRAPPED (6-INCH). SLOPE 0.5% MIN. TO SUITABLE DRAINAGE. RODENT SCREEN REQUIRED. SEE DETAIL ON "EAST ABUTMENT DETAILS" SHEET.
- 1/2" FILLER (INCLUDED IN WING LENGTH); SEAL ALL EXPOSED HORIZ. & VERT. SURFACES OF 1/2" FILLER WITH NON-STAINING GRAY NON-BITUMINOUS JOINT SEALER (1" DEEP AND HOLD 1/8" BELOW SURFACE OF CONCRETE). EXTEND SEALER 3" BELOW GUTTER LINE AT INSIDE FACE.
- ▽ 18" (RMW) RUBBERIZED MEMBRANE WATERPROOFING SEAL ALL HORIZ. & VERT. JOINTS AT BACKFACE.

NO.	DATE	REVISION	BY
STATE OF WISCONSIN DEPARTMENT OF TRANSPORTATION			
STRUCTURE B-61-238			
		DESIGNED BY	TEKANS
		DRAWN BY	JAL / CKD / CDH

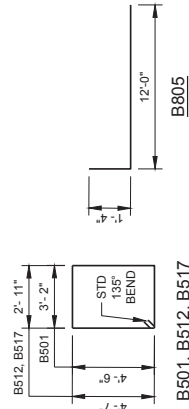
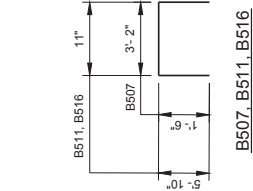
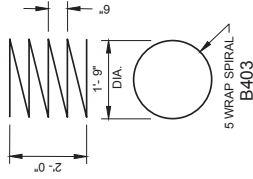
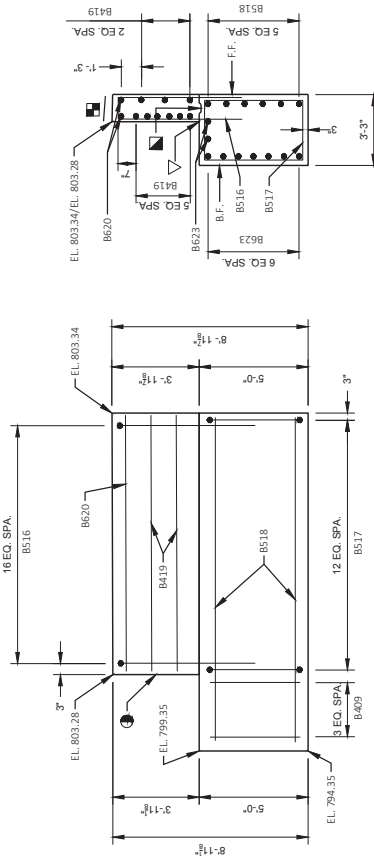
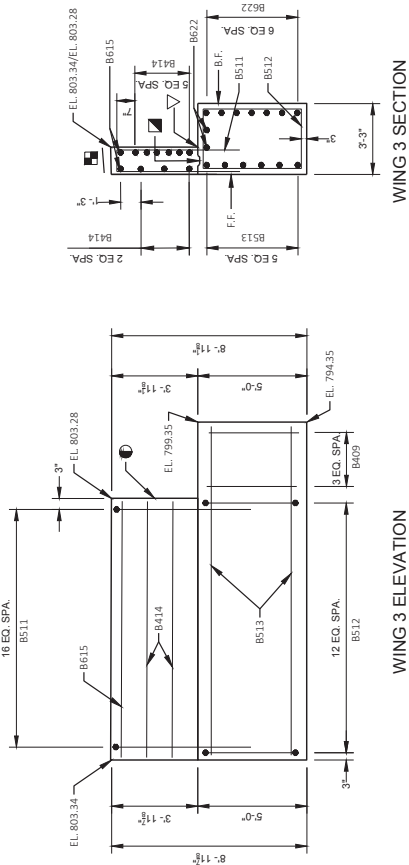


STATE PROJECT NUMBER  
1633-06-74

**E. ABUT**  
**BILL OF BARS**  
TOTAL UNCOATED = 1,700 LBS  
TOTAL UNCOATED = 2,710 LBS

BAR MARK	NO. REQ'D.		LENGTH	COAT	STAINLESS STEEL	BENT	BAR SERIES	LOCATION
	STAGE 2	STAGE 3						
B501	28	28	16'-0"			X		BODY - STIRRUPS
B402	6	6	2'-3"					PILES - 2 PER BODY PILE
B403	3	3	28'-0"			X		PILES - 1 PER BODY PILE
B604	11	11	22'-5"			X		ABUT BODY - HORIZ. - TOP F.F. BTM
B805	7	7	13'-2"			X		ABUT BODY - HORIZ. - B.F.
B507	6	6	5'-11"			X		ABUT BODY - VERT. - TOP
B408	4	4	5'-0"			X		ABUT BODY - HORIZ. - TOP
B409	4	4	4'-6"			X		ABUT BODY - VERT. - ENDS
B511	--	17	12'-4"	X				WING 3 - VERTICAL
B512	--	13	15'-8"	X		X		WING 3 - STIRRUP
B513	--	6	15'-0"	X		X		WING 3 - HORIZONTAL
B414	--	9	11'-7"	X		X		WING 3 - HORIZONTAL
B615	--	2	11'-7"	X		X		WING 3 - HORIZONTAL TOP
B516	17	--	12'-4"	X		X		WING 4 - VERTICAL
B517	13	--	15'-8"	X		X		WING 4 - STIRRUP
B518	6	--	15'-0"	X		X		WING 4 - HORIZONTAL
B419	9	--	11'-7"	X		X		WING 4 - HORIZONTAL
B620	2	--	11'-7"	X		X		WING 4 - HORIZONTAL TOP
B521	15	15	2'-0"	X		X		ABUT. VERT. DOWEL
B622	--	9	14'-0"	X		X		WING 3 - HORIZONTAL
B623	9	--	14'-0"	X		X		WING 4 - HORIZONTAL

BENDING DIMENSIONS ARE OUT TO OUT OF BARS.



WING 3 ELEVATION

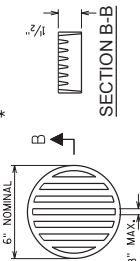
WING 4 SECTION

LEGEND

NOTES

- ▣ SLOPE 2% FOR DRAINAGE
- ◆ BAR LENGTH HAS BEEN COMPUTED TO THE CL OF CONSTRUCTION JOINT AND SHALL BE MODIFIED TO BAR COUPLER MANUFACTURE RECOMMENDATIONS.
- ◻ OPTIONAL CONST. JOINT. KEYWAY FORMED BY A REVELED 2" X 6" (R.M.W. @ BACKFACE & 3/4" V" GROOVE @ FRONTFACE IF DINT IS USED).
- 1/2" FILLER (INCLUDED IN WING LENGTH). SEAL ALL EXPOSED HORIZ. & VERT. SURFACES OF 1/2" FILLER WITH NON-STAINING GRAY NON BITUMINOUS JOINT SEALER. (1" DEEP AND HOLD 1/8" BELOW SURFACE OF CONCRETE). EXTEND SEALER 3" BELOW GUTTER LINE AT INSIDE FACE.
- ▽ 18" (RMW) RUBBERIZED MEMBRANE WATERPROOFING SEAL ALL HORIZ. & VERT. JOINTS AT BACKFACE.

ABUTMENTS TO BE SUPPORTED ON PILING CIP CONCRETE 12 3/4 X 0.375-INCH DRIVEN TO A REQUIRED DRIVING RESISTANCE OF 210 TONS\*\* PER PILE AS DETERMINED BY THE MODIFIED GATES DYNAMIC FORMULA. ESTIMATED 75-FT LONG AT EAST ABUTMENT.



**RODENT SHIELD DETAIL**  
\*DIMENSIONS ARE APPROXIMATE. THE GRATE IS SIZED TO FIT INTO A PIPE COUPLING. ORIENT SO SLOTS ARE VERTICAL. THE RODENT SHIELD, PIPE COUPLING AND SCREWS SHALL BE CONSIDERED INCIDENTAL TO THE BID ITEM "PIPE UNDERDRAIN WRAPPED 6-INCH". THE RODENT SHIELD SHALL BE A PVC GRATE. SIMILAR TO THE ONE SHOWN IN THE ATTACHED DRAWING. THE PIPE UNDERDRAIN SHALL BE 18" DIA. THE RODENT SHIELD SHALL BE FASTENED TO THE PIPE COUPLING WITH TWO OR MORE NO. 10 X 1/2 INCH STAINLESS STEEL SHEET METAL SCREWS.

Addendum No. 01  
ID 1633-06-74  
Revised Sheet 122  
November 20, 2018

NO.	DATE	REVISION	BY
STATE OF WISCONSIN DEPARTMENT OF TRANSPORTATION			
STRUCTURE B-61-238			
DRAWN BY		JAL	
CHECKED BY		CDH	
SHEET		8 OF 15	
DETAILS		122	

**NOTES**

TOP OF GIRDER TO BE ROUGH FLOATED AND BROOMED TRANSVERSELY EXCEPT THE OUTSIDE 2" OF GIRDER. CONCRETE SEALER SHALL BE APPLIED TO ALL SMOOTH SURFACES INCLUDING THE OUTSIDE 2" OF THE TOP FLANGE.

DO NOT APPLY CONCRETE SEALER OR EPOXY TO SURFACES RECEIVING APPLICATION OF CONCRETE STAINING.

THE GIRDERS SHALL BE PROVIDED WITH A SUITABLE LIFTING DEVICE FOR HANDLING AND ERECTING THE GIRDERS. SEE SECT. 503.3.3 OF STANDARD SPECIFICATIONS FOR GUIDANCE.

STRANDS SHALL BE FLUSH WITH END OF GIRDER. FOR GIRDER ENDS EMBEDDED COMPLETELY IN CONCRETE, END OF STRANDS SHALL BE COATED WITH NON-BITUMINOUS JOINT SEALER. (CONCRETE SEALER SHALL NOT BE APPLIED TO COAT THE GIRDER ENDS EXPOSED STRAND ENDS AND ALL NON-BONDING SURFACES WITHIN 2 FEET OF THE GIRDER ENDS WITH A NON-PHENOLIC EPOXY CONFORMING TO AASHTO M318. THE SEALER SHALL BE APPLIED AT LEAST 3 DAYS AFTER MOIST CURING HAS CEASED AND PRIOR TO THE APPLICATION OF THE SEALER. ALL GIRDERS SHALL BE CAST FULL LENGTH AS SHOWN.

SPACING SHOWN FOR #4 STIRRUPS IS FOR GRADE 60 REINFORCEMENT.

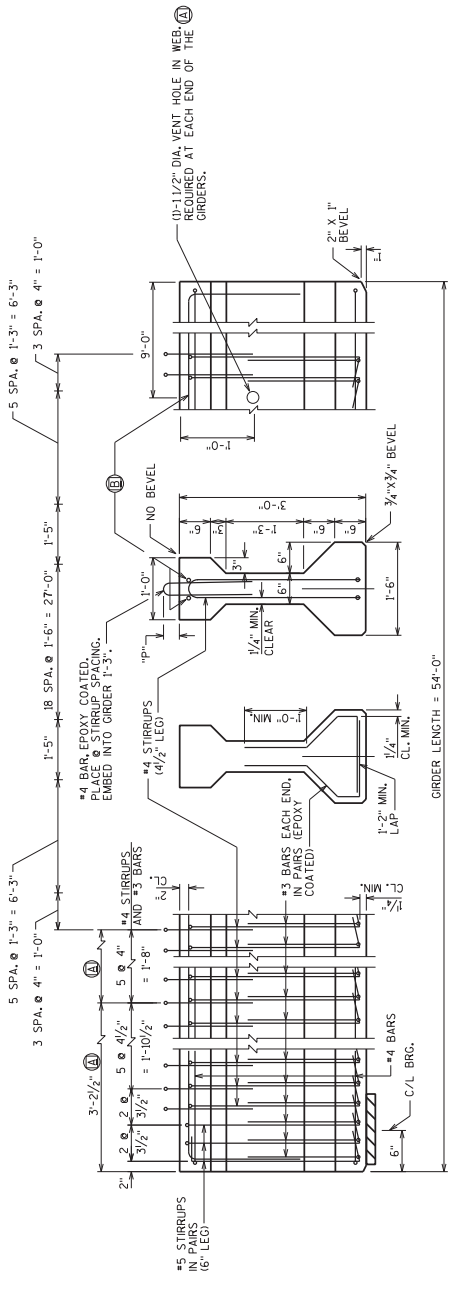
AN ALTERNATE EQUIVALENT OF WELDED WIRE FABRIC (WWF) REINFORCEMENT SHALL BE PERMITTED UPON APPROVAL OF THE STRUCTURES DEVELOPMENT SECTION.

PRESTRESSING STRANDS SHALL BE 0.51" DIA. 7 WIRE LOW-RELAXATION STRANDS WITH AN ULTIMATE STRENGTH OF 270,000 PSI.

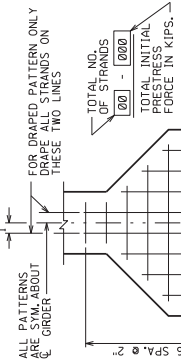
BEND EACH END OF #4 STIRRUPS 4 1/2" AND #5 STIRRUPS 6".

FOR DIAPHRAGM INSERT & CONNECTION DETAILS SEE "STEEL DIAPHRAGM" SHEET.

**Addendum No. 01  
ID 1633-06-74  
Revised Sheet 123  
November 20, 2018**

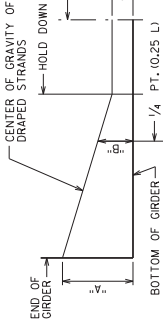
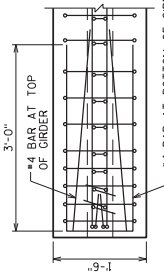


**SIDE VIEW & TYPICAL SECTION IN SPAN** (A) DETAIL TYP. AT EACH END (B) 2-#5 BARS BEND DOWN MIN. 16 BAR DIA. AT ENDS. LAP 2'-11" MIN.

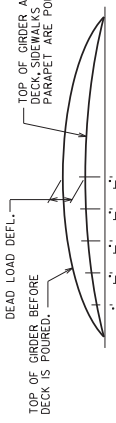


**TYP. STRAND PATTERN**

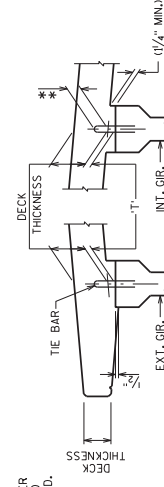
**TOP VIEW OF GIRDER ENDS**



**DRAPED STRAND PROFILE**



**DEAD LOAD DEFLECTION**



**DECK HAUNCH DETAIL**

IF 1/2" MINIMUM HAUNCH HEIGHT AT EDGE OF GIRDER CANNOT BE MAINTAINED, THE GRADE LINE MAY BE REVISED BY THE ENGINEER AT THE OPTION OF THE CONTRACTOR. THE PLAN DECK THICKNESS SHALL BE HELD. NOTIFY THE STRUCTURES SECTION IF THE GRADE LINE IS RAISED FROM THE PLAN PROFILE BY MORE THAN 1/2" OR.

\*\* IF 3" MINIMUM DECK EMBEDMENT OF TIE BAR CANNOT BE OBTAINED, TO DETERMINE 'T', ELEV. OF TOP OF GIRDS. AT 1/4 OF SUBSTRUCTURE UNITS & AT 1/10 POINTS OF EACH SPAN SHALL BE TAKEN. THEN FOLLOW THIS PROCESS:

TOP OF DECK ELEV. AT FINAL GRADE  
 - TOP OF GIRDER ELEVATION  
 - DECK THICKNESS  
 = HAUNCH HEIGHT 'T'

NOTE: AN AVERAGE HAUNCH (T) OF 2.5" WAS USED IN THE QUANTITY "CONCRETE MASONRY BRIDGES".

**GIRDER DATA**

SPAN (FEET)	GIRDER LENGTH (FEET)	CONC. STRENGTH (P.S.I.)		ENHANCED (P.S.I.)		ENHANCED (P.S.I.)		ENHANCED (P.S.I.)		ENHANCED (P.S.I.)		ENHANCED (P.S.I.)		ENHANCED (P.S.I.)		ENHANCED (P.S.I.)		ENHANCED (P.S.I.)		ENHANCED (P.S.I.)		ENHANCED (P.S.I.)		
		%	%	%	%	%	%	%	%	%	%	%	%	%	%	%	%	%	%	%	%	%	%	
59-0'	1-6	54-0'	0.15	0.28	0.39	0.45	0.47	0.45	0.39	0.28	0.15	8000	6"	6"	6"	6"	6"	6"	6"	6"	6"	6"	6"	6"

**DRAPED PATTERN**

**UNDRAPED PATTERN**

0.5% STRANDS

0.5% STRANDS

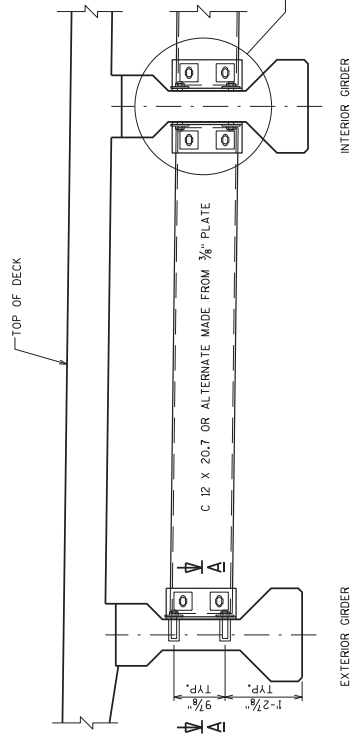
NO. DATE	REVISION	BY
STATE OF WISCONSIN DEPARTMENT OF TRANSPORTATION		
STRUCTURE B-61-238		
DRAWN BY JAL PLANS CDH		
36" PRESTRESSED GIRDER DETAILS		
SHEET 9 OF 15		
123		

STATE PROJECT NUMBER

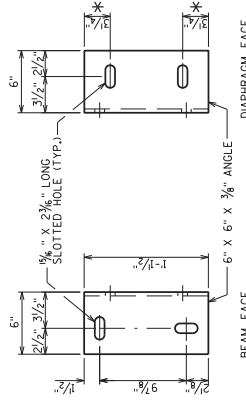
1633-06-74

**NOTES**

ALL DIAPHRAGM MATERIAL NOT EMBEDDED IN THE CONCRETE GIRDER SHALL BE PAID FOR AT THE UNIT PRICE BID FOR "STEEL DIAPHRAGMS B-61-238", EACH.  
 EACH DIAPHRAGM BETWEEN GIRDERS SHALL CONSTITUTE ONE UNIT.  
 ALL DIAPHRAGM STRUCTURAL STEEL SHALL BE ASTM A709 GRADE 36. ALL DIAPHRAGM MATERIAL INCLUDING BOLTS, NUTS AND WASHERS SHALL BE GALVANIZED AFTER FABRICATION.  
 STEEL DIAPHRAGM TO CONCRETE WEB CONNECTION SHALL BE SNUG-TIGHT PLUS 1/4 TURN, UNLESS NOTED OTHERWISE. HIGH STRENGTH BOLTS FOR WEB CONNECTION SHALL MEET THE REQUIREMENTS FOR ASTM A325 OR ASTM A449.

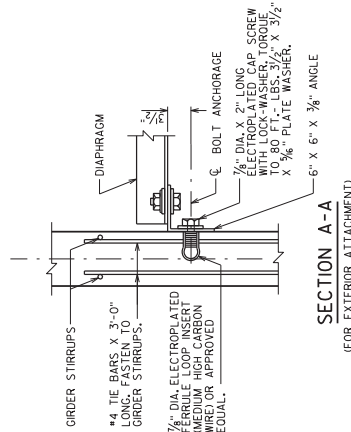


**PART TRANSVERSE SECTION AT DIAPHRAGM**

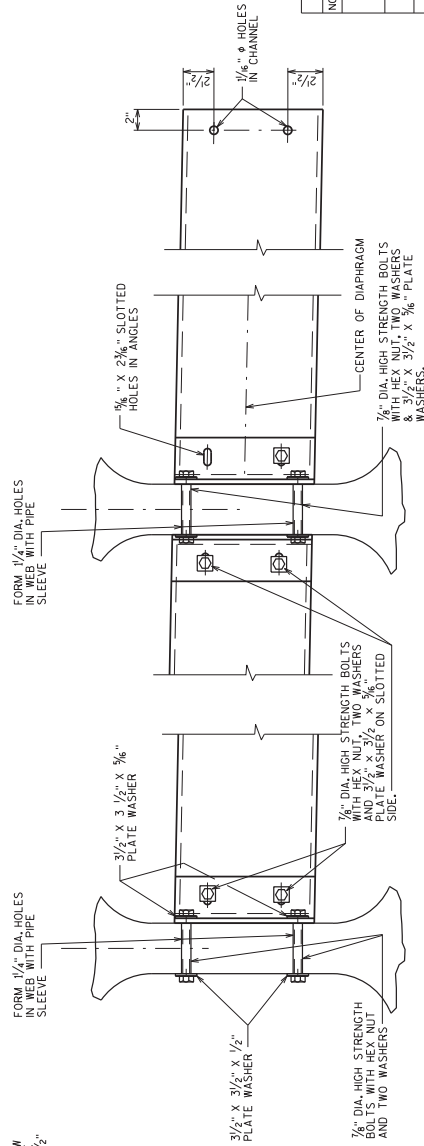


**DIAPHRAGM SUPPORT**  
 \* 2/2" FOR ALTERNATE PLATE DIAPHRAGM

**SECTION THRU ALTERNATE DIAPHRAGM**



**SECTION A-A**  
 (FOR EXTERIOR ATTACHMENT)



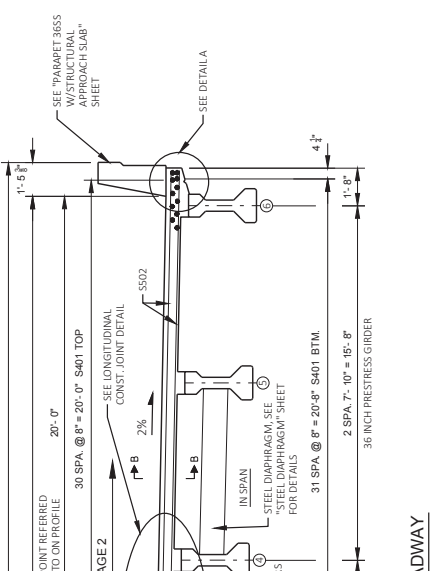
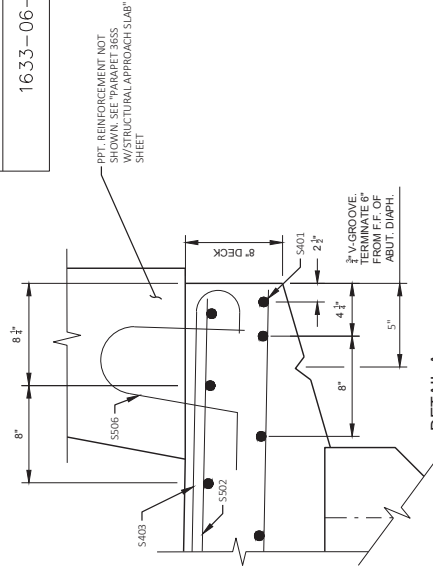
**DETAIL B**  
 (FOR STAGGERED DIAPHRAGM)

**DETAIL B**  
 (FOR CONTINUOUS LINE OF DIAPHRAGMS)

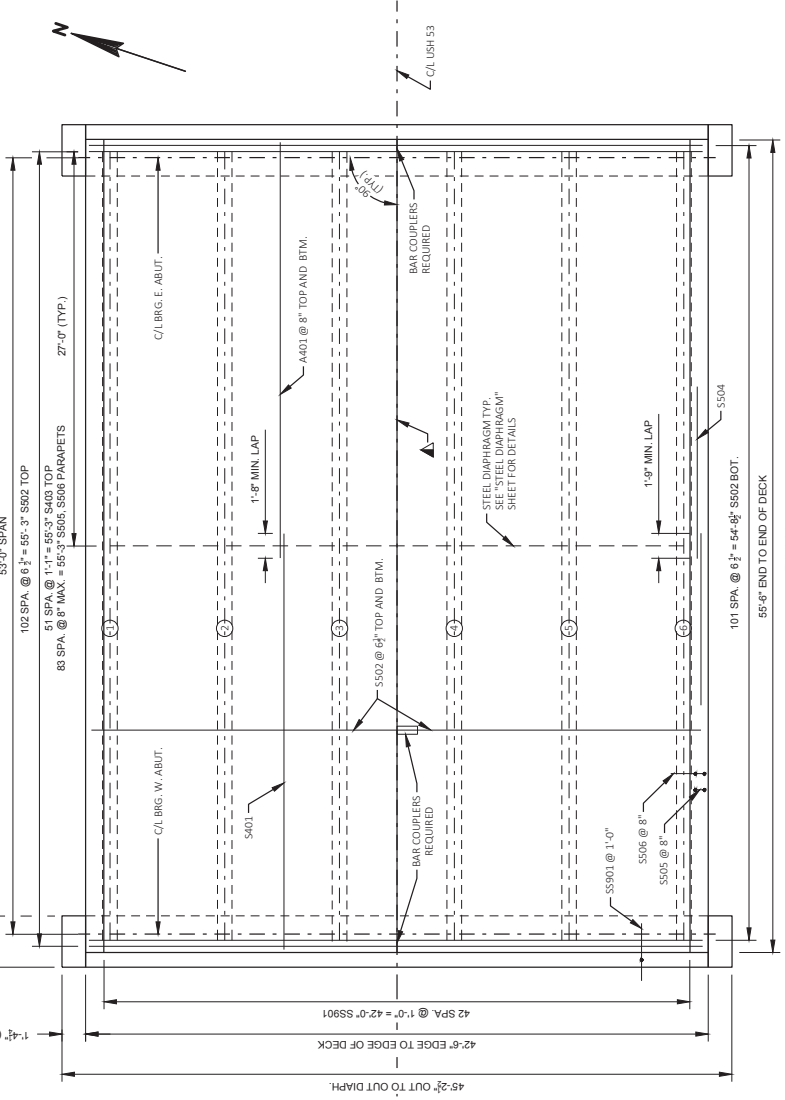
Addendum No. 01  
 ID 1633-06-74  
 Revised Sheet 124  
 November 20, 2018

NO.	DATE	REVISION	BY
STATE OF WISCONSIN DEPARTMENT OF TRANSPORTATION			
STRUCTURE		B-61-238	PLANS CDH
DRAWN BY		JAL	CDH
SHEET NO. OF		15	
STEEL DIAPHRAGM		124	

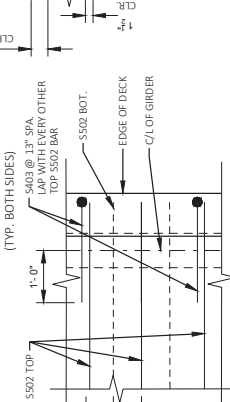
STATE PROJECT NUMBER  
1633-06-74



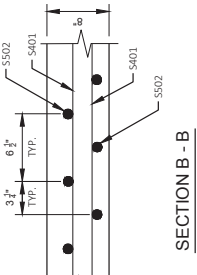
CROSS SECTION THRU ROADWAY  
(LOOKING EAST)



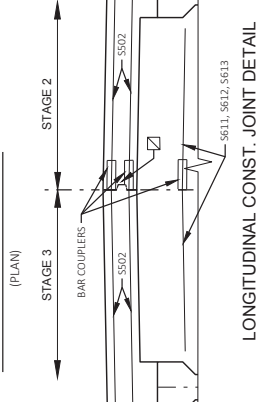
DETAIL A  
(TYP. BOTH SIDES)



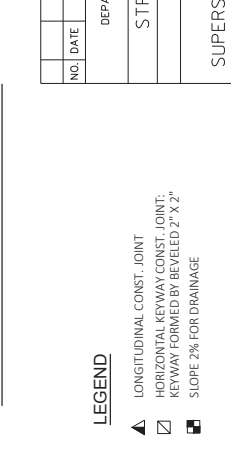
SECTION B - B



ADDITIONAL OVERHANG  
REINFORCEMENT DETAIL  
(PLAN)



LONGITUDINAL CONST. JOINT DETAIL



LEGEND

- ▲ LONGITUDINAL CONST. JOINT
- ▣ HORIZONTAL KEYWAY CONST. JOINT; KEYWAY FORMED BY BEVELED 2" X 2"
- ▣ SLOPE 2% FOR DRAINAGE

PLAN

SUPERSTRUCTURE  
SHEET 11 OF 15  
125

Addendum No. 01  
ID 1633-06-74  
Revised Sheet 125  
November 20, 2018

NO.	DATE	REVISION	BY
STATE OF WISCONSIN DEPARTMENT OF TRANSPORTATION			
STRUCTURE B-61-238			
DRAWN BY		JAL CKD CDH	

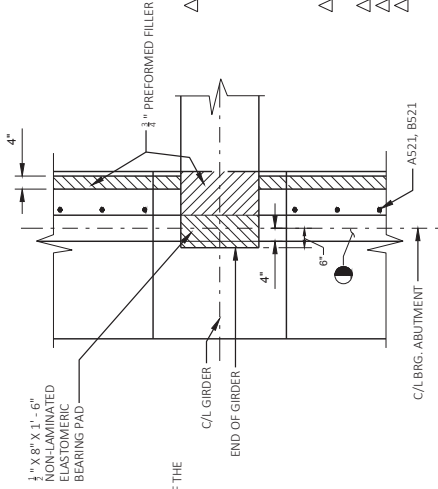
**SUPERSTRUCTURE  
BILL OF BARS**

TOTAL STAINLESS = 1,410 LBS  
TOTAL COATED = 20,470 LBS

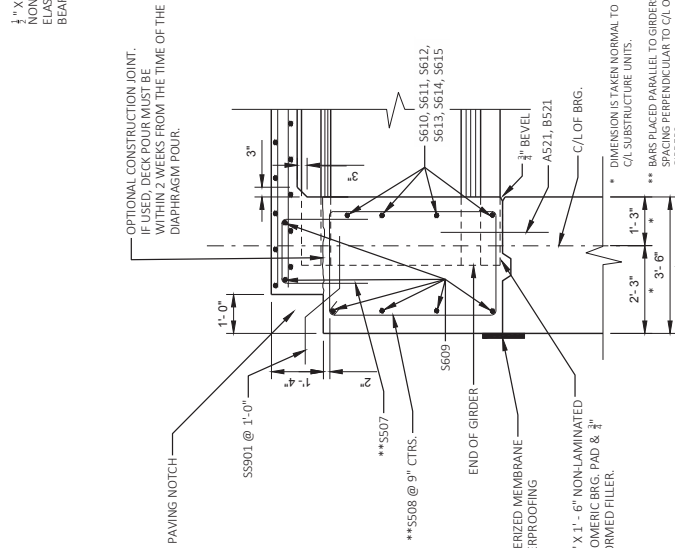
BAR MARK	NO. REQD.		LENGTH	COAT	STAINLESS STEEL	BENT	LOCATION
	STAGE 2	STAGE 3					
S401	132	132	28'-5"	X			DECK - LONGITUDINAL - TOP & BOTTOM
S402	205	205	21'-1"	X			DECK - TRANSVERSE - TOP & BOTTOM
S403	52		3'-0"	X	X		DECK - TRANSVERSE - TOP EDGES
S504	16	16	28'-6"	X			PARAPET 36SS - HORIZONTAL
S505	84	84	5'-8"	X	X		PARAPET 36SS - VERT
S506	84	84	4'-5"	X	X		PARAPET 36SS - VERT
S507	53	53	6'-7"	X	X		ABUT. DIAPHRAGM - VERT
S508	53	53	11'-6"	X	X		ABUT. DIAPHRAGM - STIRRUP
S609	12	12	22'-5"	X			ABUT. DIAPHRAGM - HORIZ. B.F.
S610	32	32	5'-3"	X			ABUT. DIAPHRAGM - HORIZ. FF
S611	4	4	3'-6"	X			ABUT. DIAPHRAGM - HORIZ. FF @ CONSTR. JOINT
S612	2	2	3'-3"	X			ABUT. DIAPHRAGM - HORIZ. FF @ CONSTR. JOINT
S613	2	2	3'-0"	X			ABUT. DIAPHRAGM - HORIZ. FF @ CONSTR. JOINT
S614	4	4	4'-7"	X	X		ABUT. DIAPHRAGM - HORIZ. - ENDS
S615	4	4	5'-1"	X	X		ABUT. DIAPHRAGM - HORIZ. - ENDS
SS901	43	43	5'-0"		X		ABUT. DIAPH. TO APPROACH SLAB

THE FIRST TWO DIGITS OF THE BAR MARK SIGNIFIES THE BAR SIZE

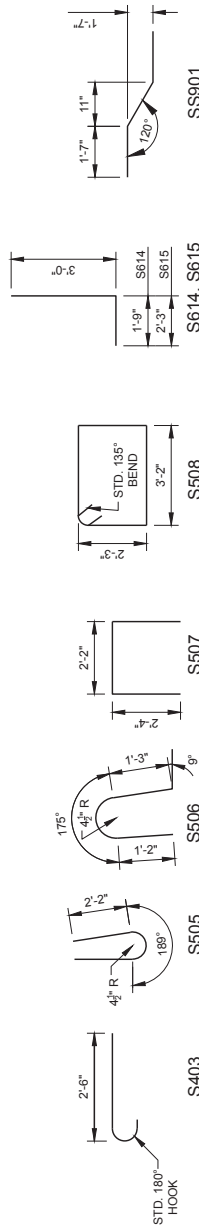
BENDING DIMENSIONS ARE TO OUT OF BARS.



**BEARING PAD DETAIL**



**PART LONGITUDINAL SECTION**



**LEGEND**

△ BAR COUPLER REQUIRED. BAR LENGTH HAS BEEN CALCULATED TO THE C/L JOINT.  
BARS MUST ACCOMMODATE THE BAR COUPLER MANUFACTURER'S SPECIFICATIONS.  
● KEVED CONSTRUCTION JOINT FORMED BY A BEVELED 2" X 6".

**TOP OF DECK ELEVATIONS**

TOP OF DECK GRADES	W. Abut	1/10	2/10	3/10	4/10	5/10	6/10	7/10	8/10	9/10	E. Abut
Station	104+47.00	104+52.30	104+57.60	104+62.90	104+68.20	104+73.50	104+78.80	104+84.10	104+89.40	104+94.70	105+00.00
Flow Line/Outside Edge of Deck	803.00	803.03	803.05	803.06	803.11	803.13	803.16	803.19	803.21	803.24	803.26
Girder 1	803.01	803.04	803.06	803.09	803.12	803.14	803.17	803.20	803.22	803.25	803.27
Girder 2	803.17	803.20	803.22	803.25	803.28	803.30	803.33	803.36	803.38	803.41	803.43
Girder 3	803.32	803.35	803.37	803.40	803.43	803.45	803.48	803.51	803.53	803.56	803.58
Crown/Stage Line	803.40	803.43	803.45	803.48	803.51	803.53	803.56	803.59	803.61	803.64	803.66
Girder 4	803.32	803.35	803.37	803.40	803.43	803.45	803.48	803.51	803.53	803.56	803.58
Girder 5	803.17	803.20	803.22	803.25	803.28	803.30	803.33	803.36	803.38	803.41	803.43
Girder 6	803.01	803.04	803.06	803.09	803.12	803.14	803.17	803.20	803.22	803.25	803.27
Flow Line/Outside Edge of Deck	803.00	803.03	803.05	803.08	803.11	803.13	803.16	803.19	803.21	803.24	803.26

Addendum No. 01  
ID 1633-06-74  
Revised Sheet 126  
November 20, 2018

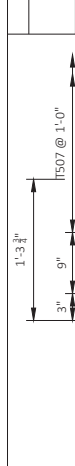
NO.	DATE	REVISION	BY

STATE OF WISCONSIN  
DEPARTMENT OF TRANSPORTATION

STRUCTURE B-61-238  
DRAWN BY: JAL  
CHECKED BY: CDH

SUPERSTRUCTURE  
DETAILS

SHEET 12 OF 15  
126

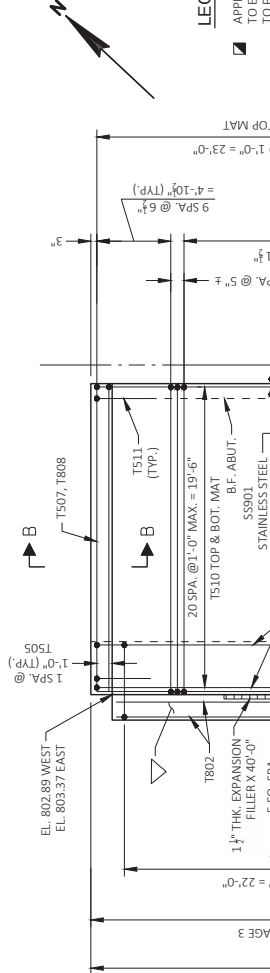
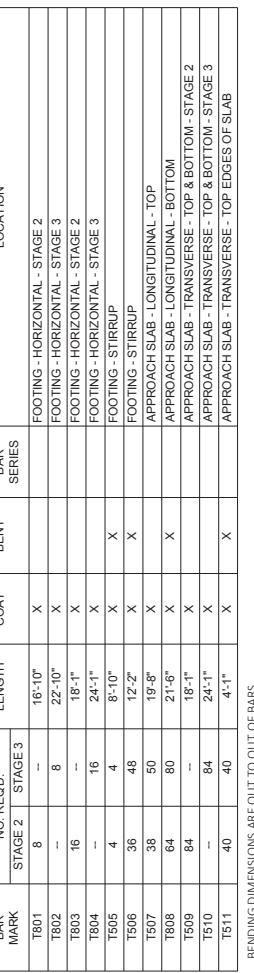


**APPROACH SLAB BILL OF BARS**

BAR MARK	NO. REQD.	STAGE	LENGTH	COAT	BENT	BAR SERIES	LOCATION
T801	8	STAGE 3	16'-10"	X			FOOTING - HORIZONTAL - STAGE 3
T802	--	--	22'-10"	X			FOOTING - HORIZONTAL - STAGE 2
T803	16	--	18'-4"	X			FOOTING - HORIZONTAL - STAGE 2
T804	--	--	24'-1"	X			FOOTING - HORIZONTAL - STAGE 3
T505	4		8'-10"	X	X		FOOTING - STIRRUP
T506	36		12'-2"	X	X		FOOTING - STIRRUP
T507	38		19'-8"	X	X		APPROACH SLAB - LONGITUDINAL - TOP
T808	64		21'-6"	X	X		APPROACH SLAB - LONGITUDINAL - BOTTOM
T509	84		18'-4"	X			APPROACH SLAB - TRANSVERSE - TOP & BOTTOM - STAGE 2
T510	84		24'-1"	X			APPROACH SLAB - TRANSVERSE - TOP & BOTTOM - STAGE 3
T511	40		4'-1"	X	X		APPROACH SLAB - TRANSVERSE - TOP EDGES OF SLAB

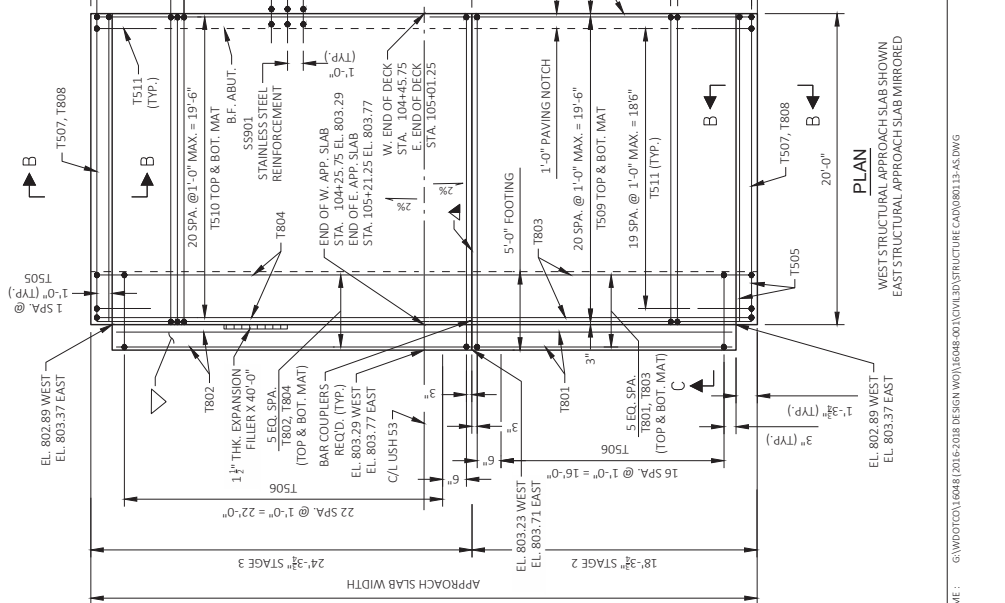
TOTAL COATED WEIGHT = 17,900 LBS

Addendum No. 01  
ID 1633-06-74  
Revised Sheet 127  
November 20, 2018

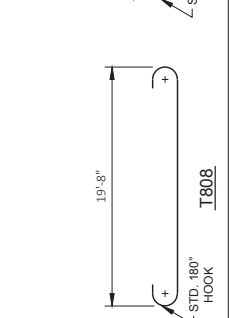
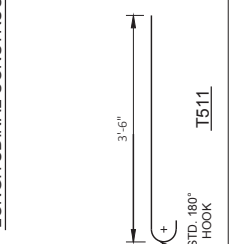


**LEGEND**

- APPLY PROTECTIVE SURFACE TREATMENT TO ENTIRE PAVING NOTCH SURFACE PRIOR TO PAVING THE STRUCTURAL APPROACH SLAB.
- LONGITUDINAL CONST. JOINT
- \*\* DIMENSION MEASURED NORMAL TO ABUTMENT BODY
- CONST. JOINT - STRIKE OFF AS SHOWN
- BAR LENGTH HAS BEEN COMPUTED TO C/L OF CONSTRUCTION JOINT AND SHALL BE MODIFIED TO BAR COUPLER MANUFACTURER RECOMMENDATIONS.
- SEAL ALL EXPOSED HORIZONTAL AND VERTICAL SURFACES OF F FILLER WITH NON-STAINING GREAT NON-BITUMINOUS JOINT SEALER. (1" DEEP AND HOLD 3/8" BELOW SURFACE OF CONCRETE)
- STEEL TROWEL TOP SURFACE OF FOOTING AND PLACE MULTIPLE LAYERS (0.03" MIN.) TOTAL THK. OF POLYETHYLENE SHEETS OVER THE ENTIRE TOP OF FOOTING.
- PLACE MULTIPLE LAYERS (0.03" MIN.) TOTAL THK. OF POLYETHYLENE SHEETS OVER THE ENTIRE TOP OF SUBGRADE BENEATH SLAB.
- HORIZONTAL KEYWAY CONSTRUCTION JOINT FORMED BY BEVELED 2" X 2"



NO.	DATE	REVISION	BY
STATE OF WISCONSIN DEPARTMENT OF TRANSPORTATION			
STRUCTURE B-61-238			
DRAWN BY: STD CDH			
CHECKED BY: STD CDH			
SHEET 13 OF 15			
STRUCTURAL APPROACH SLAB			
127			



STATE PROJECT NUMBER

1633-06-74

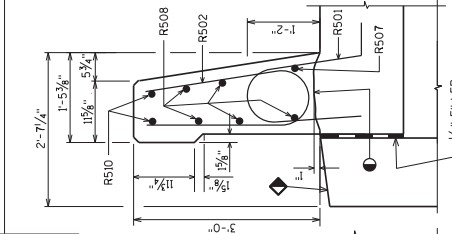
APPROACH SLAB PARAPET

BILL OF BARS

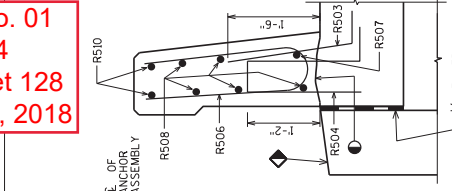
FOR STRUCTURAL APPROACH SLAB PARAPETS

BAR MARK	NO. REQ'D.	STAGE			LOCATION
		1	2	3	
R501	36	X	X	X	PARAPET VERT.
R502	36	X	X	X	PARAPET VERT.
R503	24	X	X	X	PARAPET VERT.
R504	34	X	X	X	PARAPET VERT.
R505	12	X	X	X	PARAPET VERT.
R506	12	X	X	X	PARAPET VERT.
R507	2	X	X	X	PARAPET HORIZ.
R508	10	X	X	X	PARAPET HORIZ.
R509	10	X	X	X	PARAPET VERT.
R510	4	X	X	X	PARAPET HORIZ.

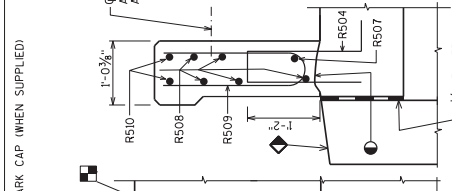
TOTAL COATED WEIGHT = 2,230 LBS



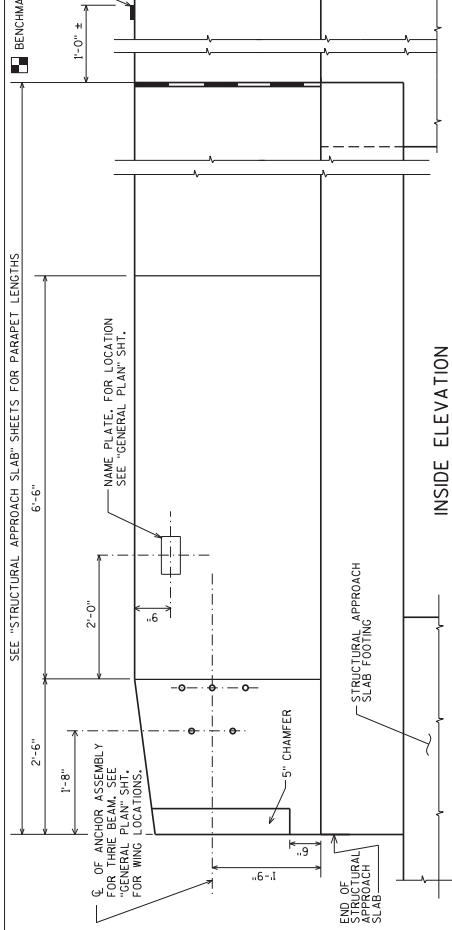
SECTION A-A



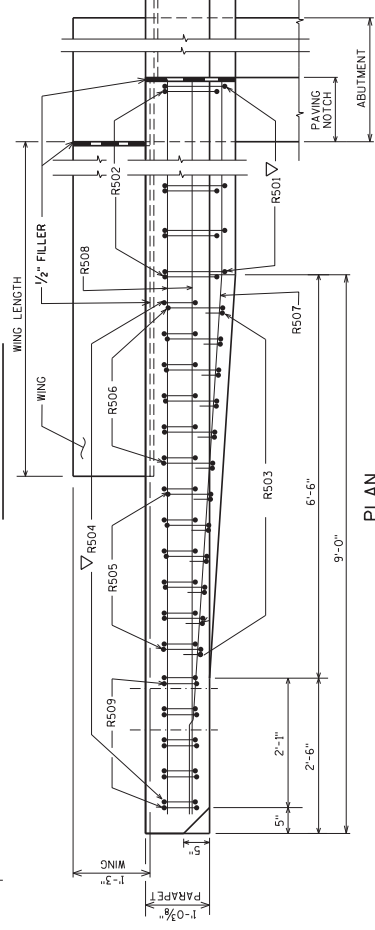
SECTION B-B



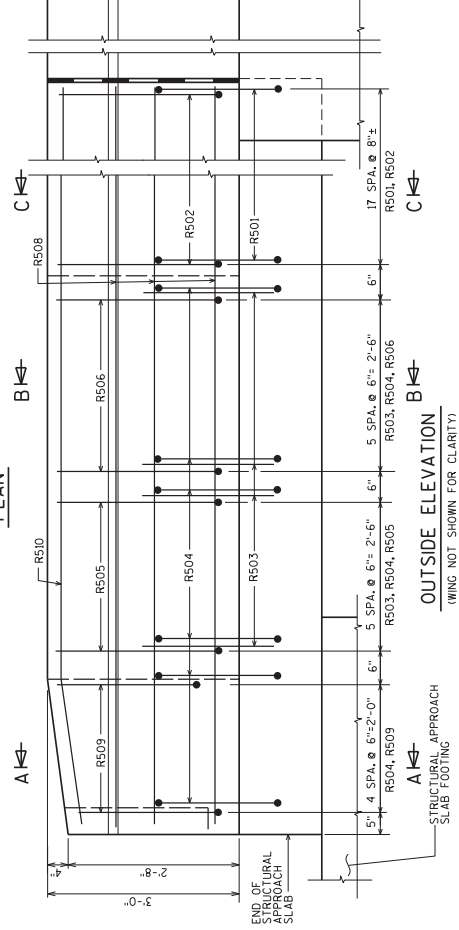
SECTION C-C



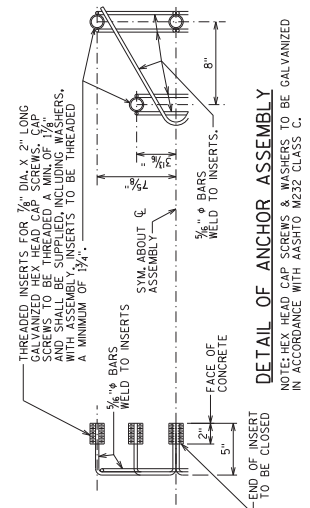
INSIDE ELEVATION



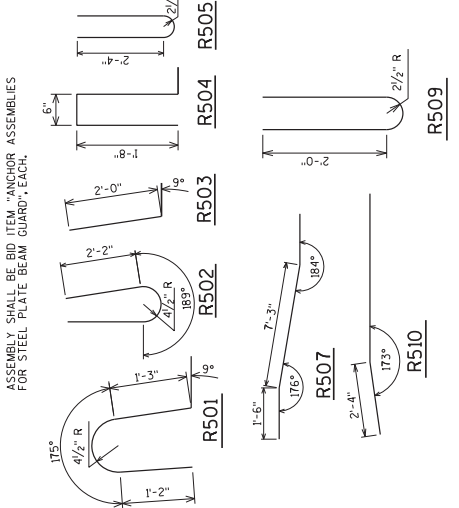
PLAN



OUTSIDE ELEVATION



DETAIL OF ANCHOR ASSEMBLY



SECTION THRU PARAPET ON BRIDGE

LEGEND

- CONST. JOINT - STRIKE OFF AS SHOWN.
- SLOPE 2% FOR DRAINAGE
- R501 AND R504 BARS TO BE TIED TO STRUCTURAL APPROACH SLAB STEEL BEFORE STRUCTURAL APPROACH SLAB IS POURED.

Addendum No. 01  
 ID 1633-06-74  
 Revised Sheet 128  
 November 20, 2018

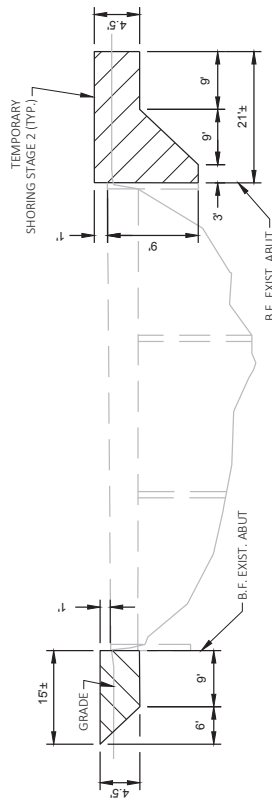
NO.	DATE	REVISION	BY
		STATE OF WISCONSIN DEPARTMENT OF TRANSPORTATION	

STRUCTURE B-61-238

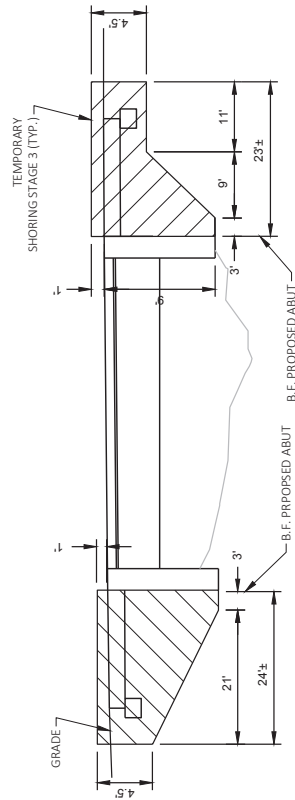
PARAPET 36SS WITH STRUCTURAL APPROACH SLAB

SHEET 14 OF 15

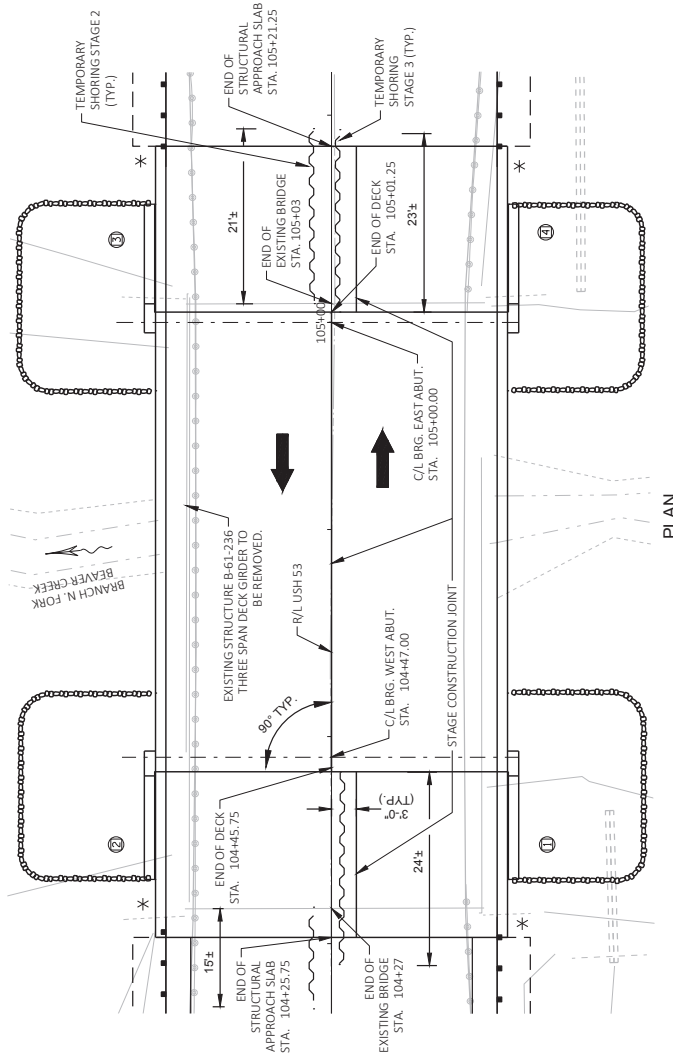
128



EXISTING STRUCTURE - STAGE 2  
(LOOKING NORTH)



EXISTING STRUCTURE - STAGE 3  
(LOOKING NORTH)



PLAN

NOTES

SEE STAGING DETAILS SHEET FOR ADDITIONAL INFORMATION.

Addendum No. 01  
ID 1633-06-74  
Revised Sheet 129  
November 20, 2018

NO.	DATE	REVISION	BY
STATE OF WISCONSIN DEPARTMENT OF TRANSPORTATION			
STRUCTURE B-61-238		DESIGNED BY	CDH
TEMPORARY SHORING		DRAWN BY	JAL
SHEET 15 OF 15		CHECKED BY	CDH
129		DATE	