



# Wisconsin Department of Transportation

## Division of Transportation Systems Development

Bureau of Project Development  
4822 Madison Yards Way, 4<sup>th</sup> Floor South  
Madison, WI 53705

January 10, 2019

Telephone: (608) 266-1631  
Facsimile (FAX): (608) 266-8459

### NOTICE TO ALL CONTRACTORS:

**Proposal #14: 1100-36-70, WISC 2019 074**  
**Milwaukee - Fond du Lac**  
**Milwaukee Co Ln to**  
**Washington Co Ln NB, Rdwy**  
**IH 41**  
**Waukesha County**

**1100-36-71, WISC 2019 075**  
**Milwaukee - Fond du Lac**  
**Milwaukee Co Ln to**  
**Washington Co Ln SB, Rdwy**  
**IH 41**  
**Waukesha County**

### Letting of January 15, 2019

This is Addendum No. 02, which provides for the following:

#### Schedule of Items:

Revised Bid Item Quantities					
Bid Item	Item Description	Unit	Old Quantity	Revised Quantity	Proposal Total
204.0125	Removing Asphaltic Surface Milling	TON	72,160	290	72,450
460.7223	HMA Pavement 3 HT 58-28 S	TON	41,930	115	42,045
460.7624	HMA Pavement 4 HT 58-28 V	TON	28,075	175	28,250
SPV.0060.002	HMA Percent Within Limits (PWL) Test Strip Volumetrics *	EACH	6	0	6
SPV.0060.003	HMA Percent Within Limits (PWL) Test Strip Density *	EACH	6	0	6

\* Bid Items SPV.0060.002 and SPV.0060.003 had pre-established bid prices. The pre-established bid price has been removed and the bid items should be bid accordingly.

Added Bid Item Quantities					
Bid Item	Item Description	Unit	Old Quantity	Revised Quantity	Proposal Total
660.0100	High Mast Lighting Foundation (location) 101. HML-67-131	LS	0	1	1
660.0100	High Mast Lighting Foundation (location) 102. HML-67-132	LS	0	1	1
660.0100	High Mast Lighting Foundation (location) 103. HML-67-133	LS	0	1	1
660.0100	High Mast Lighting Foundation (location) 104. HML-67-134	LS	0	1	1
660.0100	High Mast Lighting Foundation (location) 105. HML-67-135	LS	0	1	1

660.0200	High Mast Lighting Tower (location) 101. HML-67-131	LS	0	1	1
660.0200	High Mast Lighting Tower (location) 102. HML-67-132	LS	0	1	1
660.0200	High Mast Lighting Tower (location) 103. HML-67-133	LS	0	1	1
660.0200	High Mast Lighting Tower (location) 104. HML-67-134	LS	0	1	1
660.0200	High Mast Lighting Tower (location) 105. HML-67-135	LS	0	1	1

<b>Deleted Bid Item Quantities</b>					
Bid Item	Item Description	Unit	Old Quantity	Revised Quantity	Proposal Total
660.0100	High Mast Lighting Foundation (location) 101. HML-67-003	LS	1	-1	0
660.0100	High Mast Lighting Foundation (location) 102. HML-67-004	LS	1	-1	0
660.0100	High Mast Lighting Foundation (location) 103. HML-67-005	LS	1	-1	0
660.0100	High Mast Lighting Foundation (location) 104. HML-67-006	LS	1	-1	0
660.0100	High Mast Lighting Foundation (location) 105. HML-67-007	LS	1	-1	0
660.0200	High Mast Lighting Tower (location) 101. HML-67-003	LS	1	-1	0
660.0200	High Mast Lighting Tower (location) 102. HML-67-004	LS	1	-1	0
660.0200	High Mast Lighting Tower (location) 103. HML-67-005	LS	1	-1	0
660.0200	High Mast Lighting Tower (location) 104. HML-67-006	LS	1	-1	0
660.0200	High Mast Lighting Tower (location) 105. HML-67-007	LS	1	-1	0

**Plan Sheets:**

<b>Revised Plan Sheets – 1100-36-70</b>	
Plan Sheet	Plan Sheet Title (brief description of changes to sheet)
148	Lighting Plan – Proposed (updated HML number)
149	Lighting Plan – Schematic (updated HML number)
150	Lighting Plan – Proposed (updated HML number)
151	Lighting Plan – Schematic (updated HML number)
152	Lighting Plan – Proposed (updated HML number)
153	Lighting Plan – Schematic (updated HML number)
261	Miscellaneous Quantities (updated bid item names for updated HML numbers)

<b>Revised Plan Sheets – 1100-36-71</b>	
Plan Sheet	Plan Sheet Title (brief description of changes to sheet)
203	Miscellaneous Quantities – Updated Removing Asphaltic Surface Milling quantity to incorporate wedges.
209	Miscellaneous Quantities – Updated two asphalt quantities to incorporate wedges.

210	Miscellaneous Quantities – Updated two asphalt quantities to incorporate wedges.
101	Miscellaneous Quantities – Updated Removing Asphaltic Surface Milling quantity to incorporate wedges.
104	Miscellaneous Quantities – Updated two asphalt quantities to incorporate wedges.
105	Miscellaneous Quantities – Updated two asphalt quantities to incorporate wedges.

<b>Added Plan Sheets – 1100-36-70</b>	
Plan Sheet	Plan Sheet Title (brief description of changes to sheet)
487A	HML Foundations
487B	Subsurface investigations
487C	Subsurface investigations

**Schedule of Items**

Attached, dated January 10, 2019, are the revised Schedule of Items Pages 1, 4, and 16 – 20.

**Plan Sheets**

The following 8½ x 11-inch sheets are attached and made part of the plans for this proposal:

Revised Plan Sheets

ID 1100-36-70 sheet 148, 149, 150, 151, 152, 153, 203, 209, 210, 261

ID 1100-36-71 sheet 101, 104, 105

Added Plan Sheets

ID 1100-36-70 sheet 487A, 487B, 487C

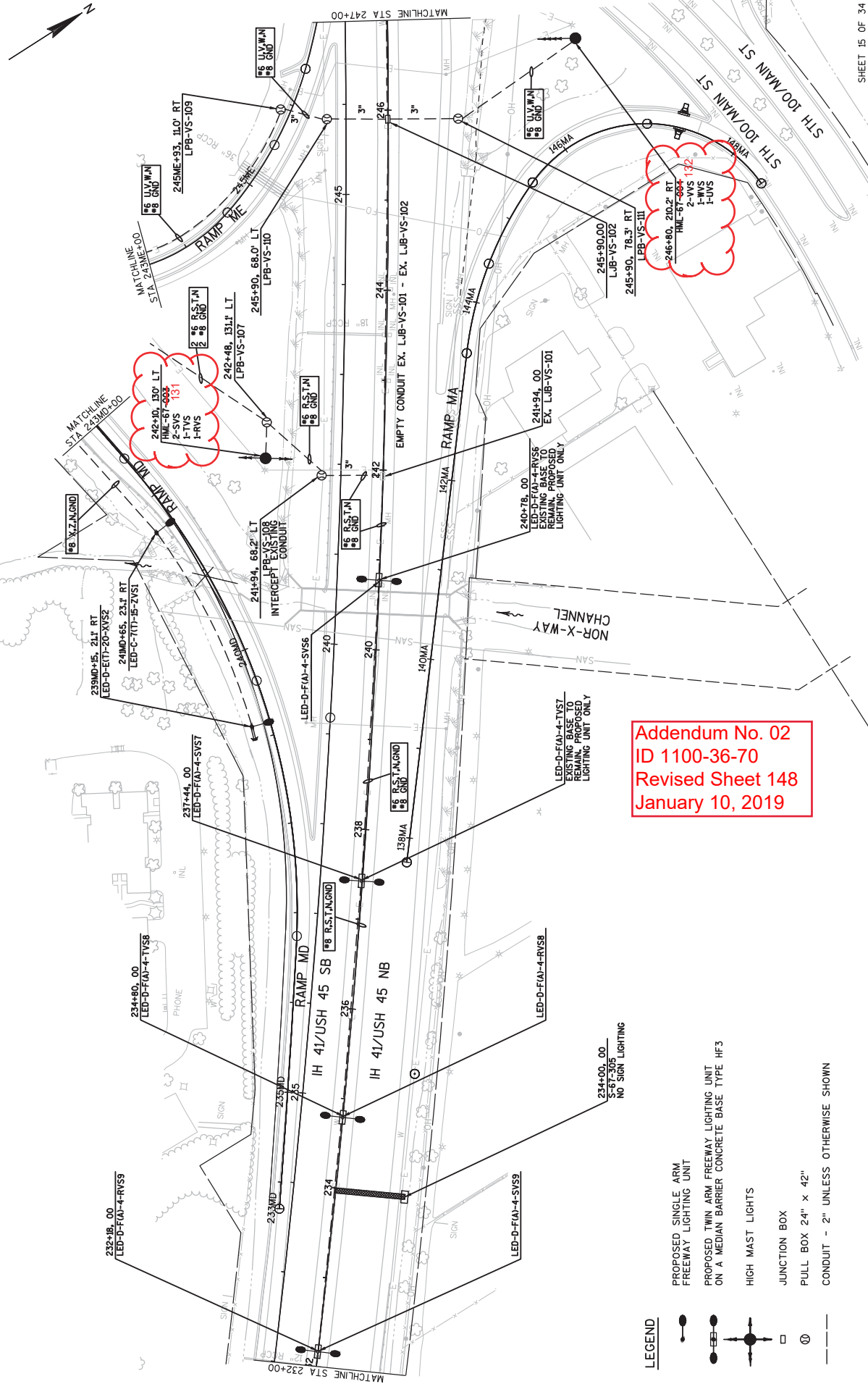
The responsibility for notifying potential subcontractors and suppliers of these changes remains with the prime contractor.

Sincerely,

*Mike Coleman*

Proposal Development Specialist  
Proposal Management Section

END OF ADDENDUM



**Addendum No. 02**  
**ID 1100-36-70**  
**Revised Sheet 148**  
**January 10, 2019**

**LEGEND**

- PROPOSED SINGLE ARM FREEMAT LIGHTING UNIT
- PROPOSED TWIN ARM FREEMAT LIGHTING UNIT ON A MEDIAN BARRIER CONCRETE BASE TYPE HF3
- HIGH MAST LIGHTS
- JUNCTION BOX
- PULL BOX 24" x 42"
- CONDUIT - 2" UNLESS OTHERWISE SHOWN

PROJECT NO: 1100-36-70

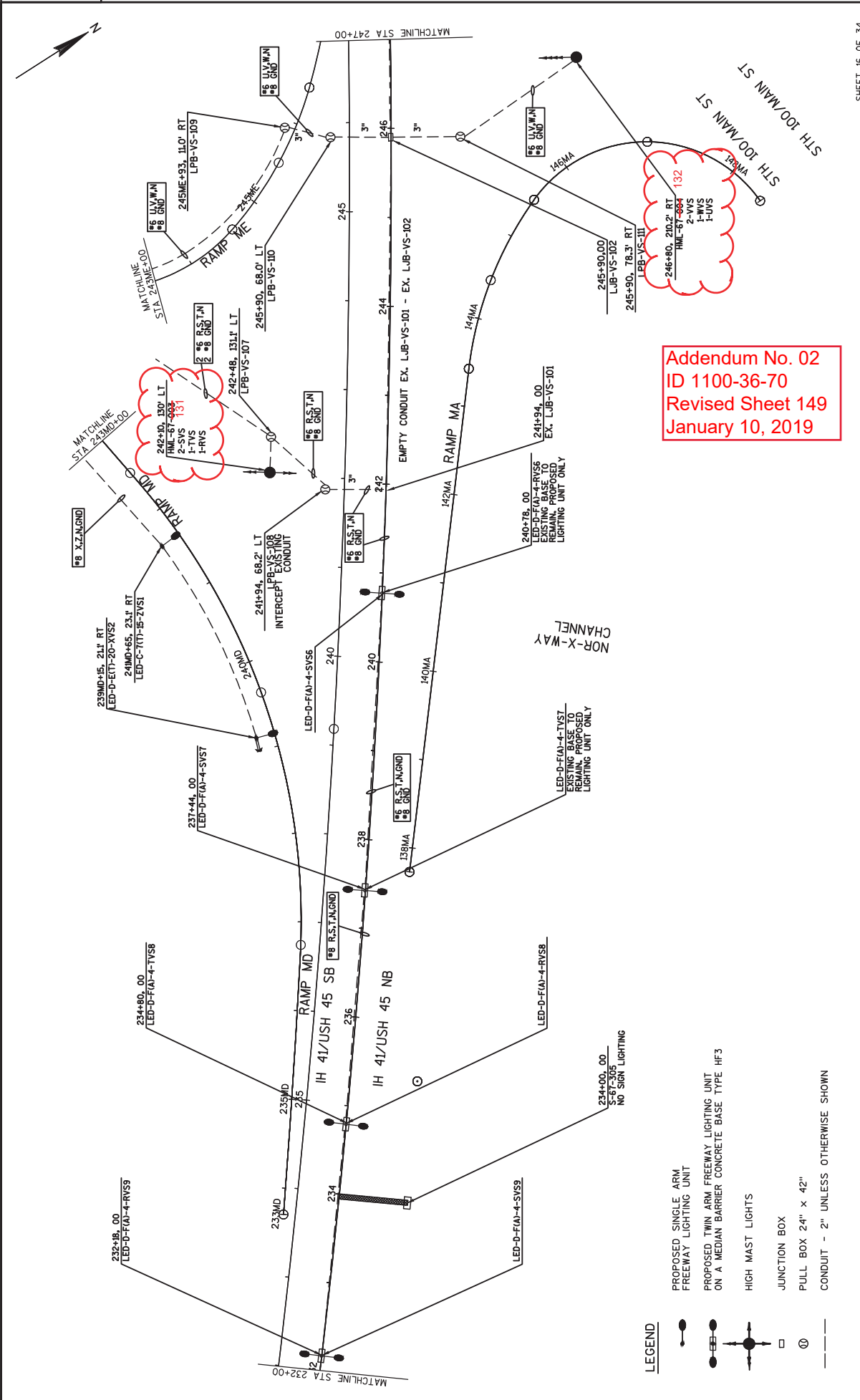
HWY: IH 41/USH 45

COUNTY: WAUKESHA

LIGHTING PLANS - PROPOSED

SHEET 148








E



Addendum No. 02  
 ID 1100-36-70  
 Revised Sheet 149  
 January 10, 2019

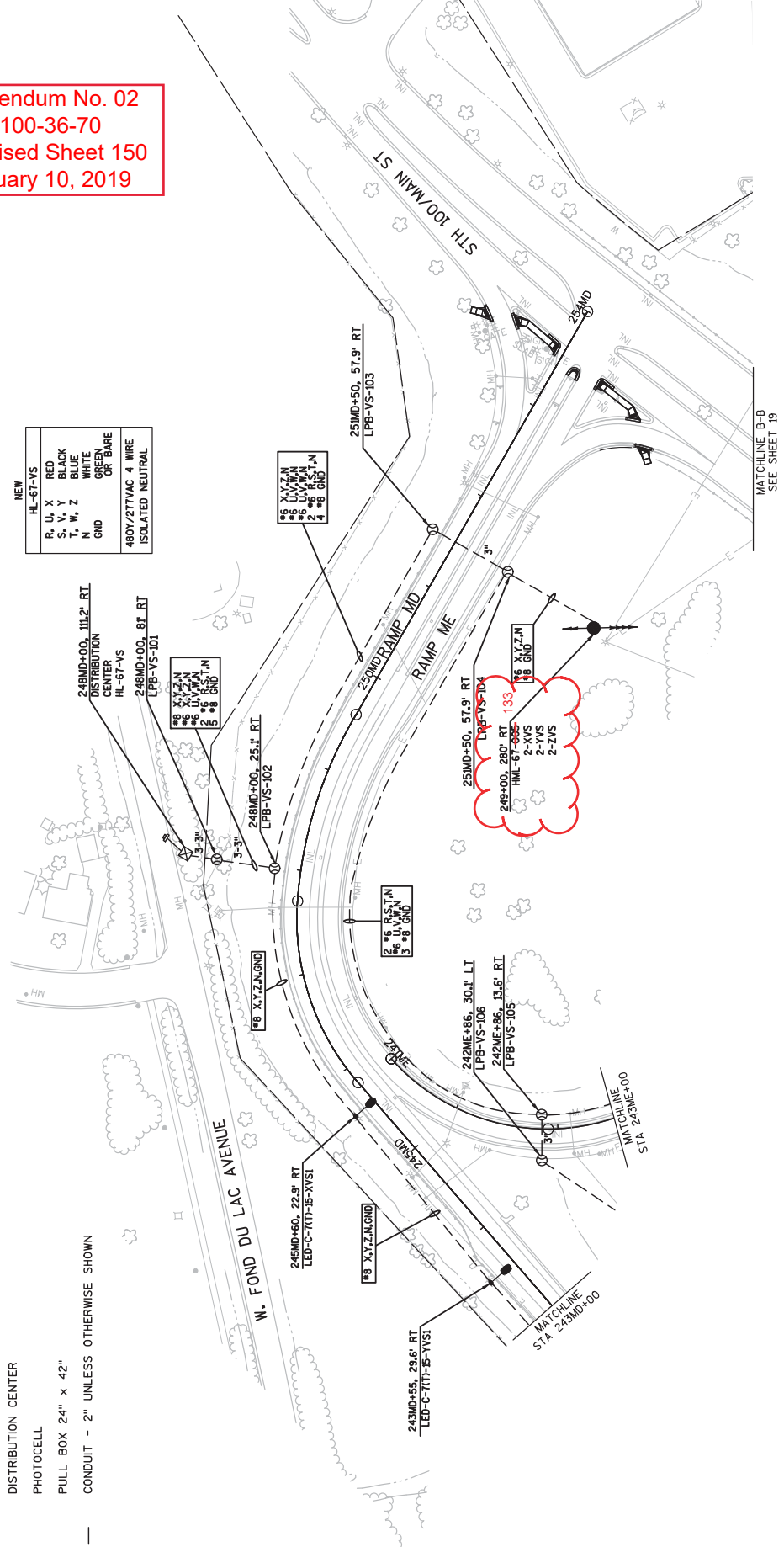
- LEGEND**
- PROPOSED SINGLE ARM FREEMAT LIGHTING UNIT
  - PROPOSED TWIN ARM FREEMAT LIGHTING UNIT ON A MEDIAN BARRIER CONCRETE BASE TYPE HF3
  - ⊙ HIGH MAST LIGHTS
  - JUNCTION BOX
  - ⊕ PULL BOX 24" x 42"
  - CONDUIT - 2" UNLESS OTHERWISE SHOWN

LEGEND

-  PROPOSED SINGLE ARM FREEWAY LIGHTING UNIT
-  HIGH MAST LIGHTS
-  ELECTRIC METER SOCKET
-  DISTRIBUTION CENTER
-  PHOTOCELL
-  PULL BOX 24" x 42"
-  CONDUIT - 2" UNLESS OTHERWISE SHOWN

Addendum No. 02  
 ID 1100-36-70  
 Revised Sheet 150  
 January 10, 2019

NEW	
HL-67-VS	RED
R, U, X	BLACK
S, V, Y	WHITE
T, W, Z	GREEN
N	GR BARE
GND	ISOLATED NEUTRAL
480Y/277VAC 4 WIRE	





Addendum No. 02  
ID 1100-36-70  
Revised Sheet 151  
January 10, 2019

LEGEND

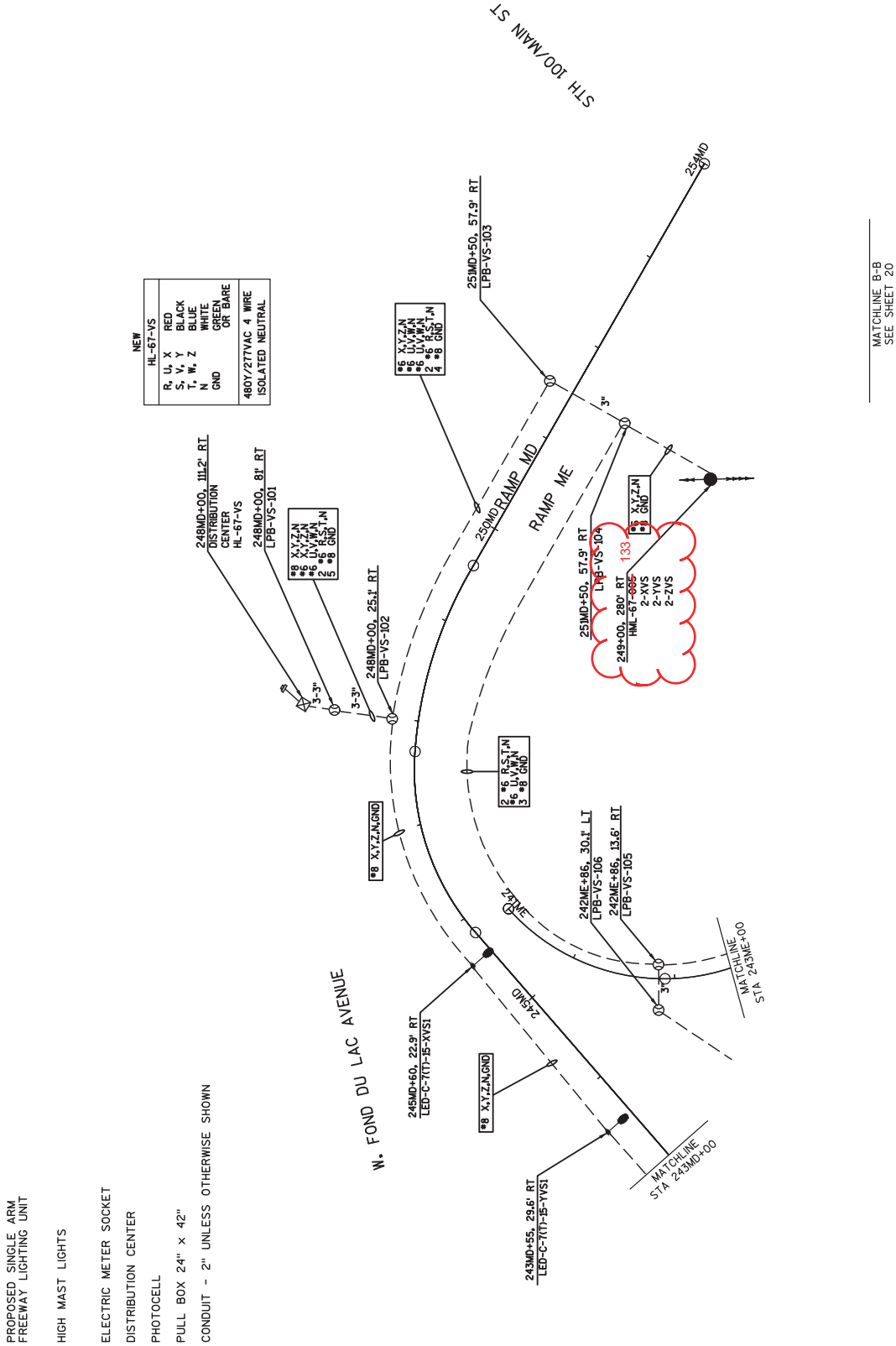
- PROPOSED SINGLE ARM FREEWAY LIGHTING UNIT
- HIGH MAST LIGHTS
- ELECTRIC METER SOCKET
- DISTRIBUTION CENTER
- PHOTOCCELL
- 
- 

NEW	
HL-67-VS	RED
R, U, X	BLACK
S, V, Y	BLUE
T, W, Z	WHITE
N	GREEN
GND	GR BARE
480Y/277VAC 4 WIRE ISOLATED NEUTRAL	

CONDUIT - 2" UNLESS OTHERWISE SHOWN

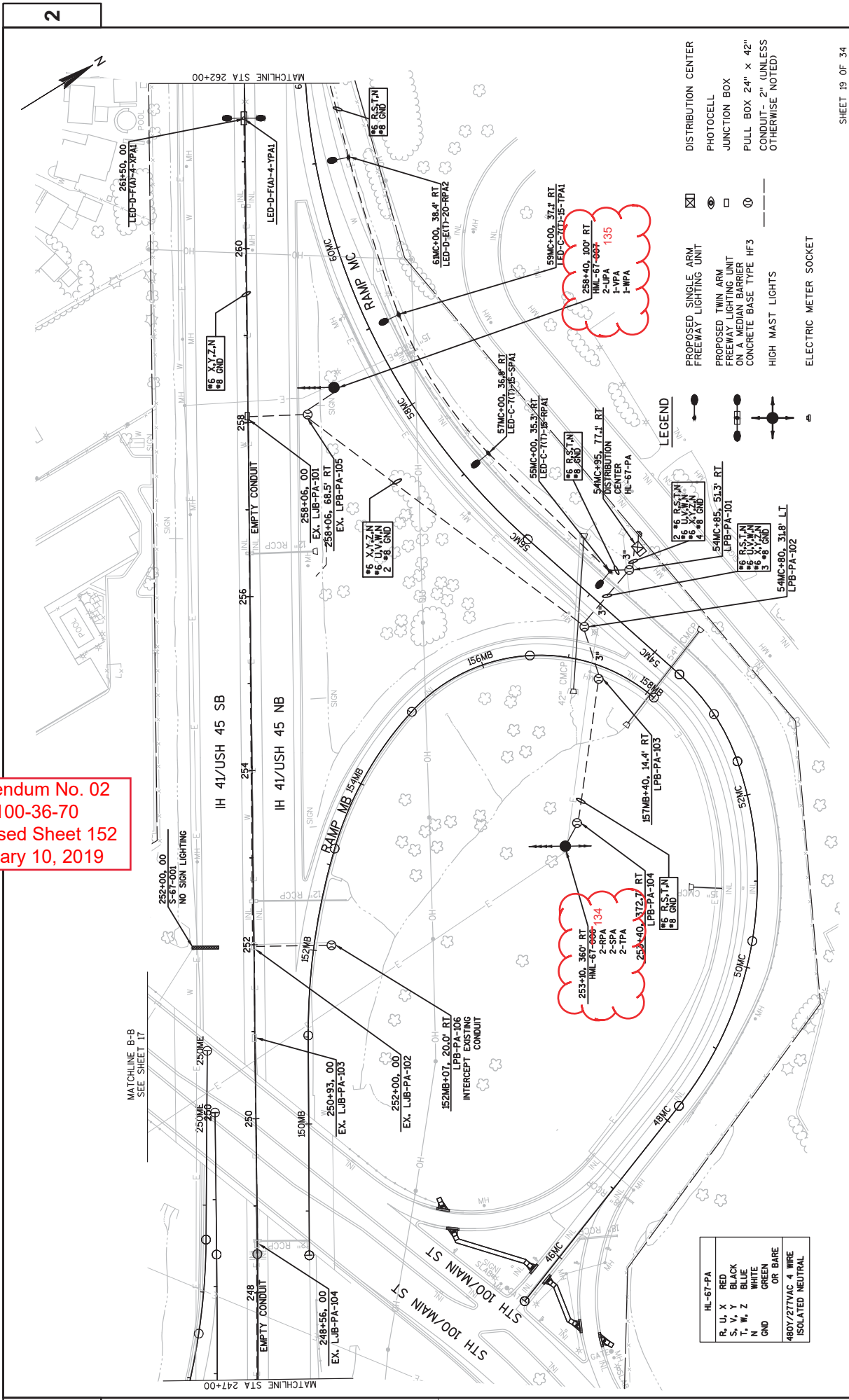
W. FOND DU LAC AVENUE

STH 100 MAIN ST



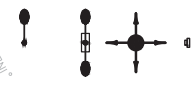
MATCHLINE B-B  
SEE SHEET 20

Addendum No. 02  
 ID 1100-36-70  
 Revised Sheet 152  
 January 10, 2019



- PROPOSED SINGLE ARM FREEWAY LIGHTING UNIT
- PROPOSED TWIN ARM FREEWAY LIGHTING UNIT
- CONCRETE BASE TYPE HF3
- HIGH MAST LIGHTS
- ELECTRIC METER SOCKET
- DISTRIBUTION CENTER
- PHOTOCELL
- JUNCTION BOX
- PULL BOX 24" x 42"
- CONDUIT- 2" (UNLESS OTHERWISE NOTED)

LEGEND

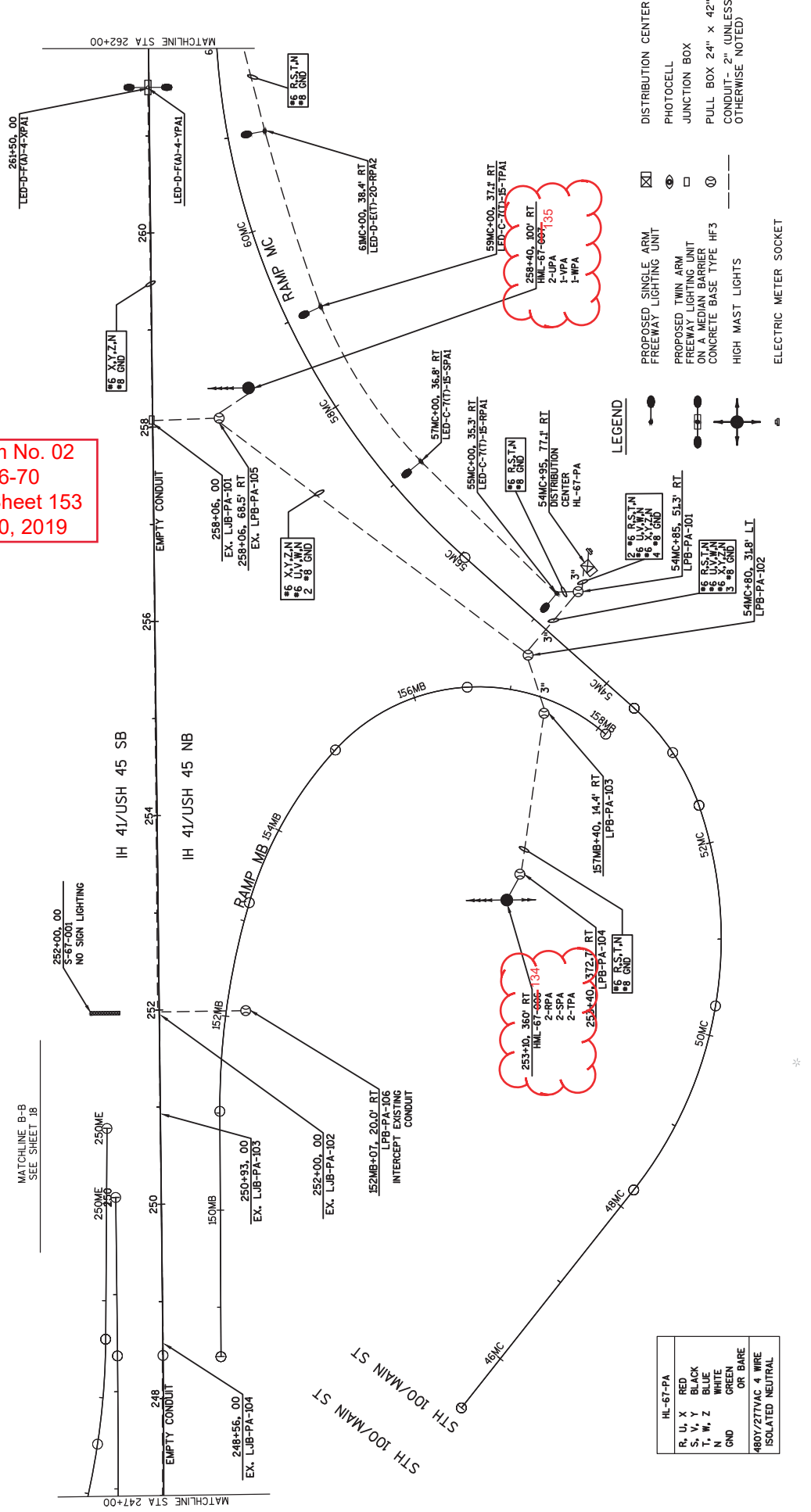


HL-67-PA	RED
R, U, X	BLACK
S, V, Y	BLUE
T, W, Z	WHITE
N	GREEN
GND	OR BARE
480Y/277VAC 4 WIRE	ISOLATED NEUTRAL





Addendum No. 02  
ID 1100-36-70  
Revised Sheet 153  
January 10, 2019



- PROPOSED SINGLE ARM FREEWAY LIGHTING UNIT
- PROPOSED TWIN ARM FREEWAY LIGHTING UNIT
- PROPOSED FREE ARM LIGHTING UNIT
- CONCRETE MEDIAN BARRIER
- CONCRETE BASE TYPE HF3
- HIGH MAST LIGHTS
- ELECTRIC METER SOCKET
- PHOTOCELL
- JUNCTION BOX
- PULL BOX 24" x 42"
- CONDUIT - 2" (UNLESS OTHERWISE NOTED)

LEGEND

HL-67-PA	
R, U, X	RED
S, V, Y	BLACK
T, W, Z	BLUE
N	WHITE
GND	GREEN
OR BARE	OR BARE
480Y/277VAC 4 WIRE	ISOLATED NEUTRAL

REMOVING ASPHALTIC SURFACE MILLING

CATEGORY	LOCATION	STA TO STA	TON	REMARKS	204.0125 TON	REMARKS	
1000	H 417USH 45 NB	158+00 - 158+00 158+00 - 246+00 158+08 - 197+50 167+87 - 180+62 170+63 - 240+00 197+50 - 200+29 200+29 - 206+58 206+58 - 209+03 209+03 - 275+00 228+63 - 239+99 240+00 - 318+00 240+00 - 288+73 244+13 - 251+69 265+97 - 276+20 275+00 - 318+00 280+24 - 287+30 288+73 - 294+70 294+70 - 345+00 308+35 - 322+34 318+00 - 345+00 318+00 - 345+00 327+43 - 332+82 327+43 - 332+82	5 150 5,800 400 1,900 200 400 150 4,400 350 5,500 1,350 250 350 2,750 250 300 1,400 450 1,800 2,000 200	INSIDE SHOULDER AND INSIDE LANE WEDGES MIDDLE LANE AND OUTSIDE LANE INSIDE SHOULDER AND INSIDE LANE AUXILIARY LANE OUTSIDE SHOULDER OUTSIDE SHOULDER INSIDE SHOULDER AND INSIDE LANE INSIDE SHOULDER AND INSIDE LANE INSIDE SHOULDER AND INSIDE LANE INSIDE SHOULDER AND INSIDE LANE AUXILIARY LANE MIDDLE LANE AND OUTSIDE LANE OUTSIDE SHOULDER AUXILIARY LANE INSIDE SHOULDER AND INSIDE LANE AUXILIARY LANE OUTSIDE SHOULDER OUTSIDE SHOULDER AUXILIARY LANE INSIDE SHOULDER AND INSIDE LANE MIDDLE LANE AND OUTSIDE LANE AUXILIARY LANE AUXILIARY LANE RIGHT TURN TO IH41 NB RIGHT TURN TO MAIN STREET			
	RAMP MA	141MA+09 - 146MA+71 146MA+71 - 147MA+54	250 50				
	RAMP MB	151MB+74 - 157MB+60	250				
	RAMP MC	45MC+36 - 47MC+00 45MC+36 - 47MC+00 45MC+36 - 47MC+00 47MC+00 - 54MC+24 54MC+24 - 55MC+46	100 50 100 750 450				
1000	RAMP PA	11PA+42 - 17PA+07	300				
	RAMP PB	187PB+31 - 191PB+27	150				
	RAMP PC	88PC+75 - 103PC+78 103PC+78 - 118PC+34	200 600				
	RAMP QA	332QA+83 - 334QA+92 334QA+92 - 339QA+00 339QA+00 - 345QA+84	200 300 1,155				
	TOTALS		38,160				

Addendum No. 02  
ID 1100-36-70  
Revised Sheet 203  
January 10, 2019

Addendum No. 02  
 ID 1100-36-70  
 Revised Sheet 209  
 January 10, 2019

ASPHALT PAVEMENT ITEMS

CATEGORY	LOCATION	STA	TO	STA	450.4000 HMA COLD WEATHER PAVING		460.2000 HMA DENSITY HMA PAVEMENT		460.2005 INCENTIVE		460.2223 HMA PAVEMENT 3 HT 58-28 S		460.7224 HMA PAVEMENT 4 HT 58-28 V		465.0125 ASPHALTIC SURFACE TEMPORARY		SPV.0060.002 HMA PAVEMENT PWL TEST STRIP			
					TON	GAL	DOL	DOL	DOL	DOL	DOL	DOL	TON	TON	TON	TON	TON	EACH	EACH	DENSITY
1000	INSIDE LANE	158+00	-	158+08	--	--	--	--	--	--	--	--	--	--	--	--	--	0.10	0.10	
		158+08	-	197+50	340	1,390	3,154	840	550	640	550	0.10	0.10	0.10	0.10	0.10	0.10	0.10	0.10	
		197+50	-	200+29	20	90	223	55	35	85	0.10	0.10	0.10	0.10	0.10	0.10	0.10	0.10	0.10	
		200+29	-	206+58	55	220	503	135	85	0.10	0.10	0.10	0.10	0.10	0.10	0.10	0.10	0.10	0.10	
		206+58	-	209+03	20	80	196	80	565	0.10	0.10	0.10	0.10	0.10	0.10	0.10	0.10	0.10	0.10	
		209+03	-	249+76	355	1,435	3,258	870	350	540	0.10	0.10	0.10	0.10	0.10	0.10	0.10	0.10	0.10	
		249+76	-	275+00	220	890	2,019	540	130	420	0.10	0.10	0.10	0.10	0.10	0.10	0.10	0.10	0.10	
		275+00	-	285+15	80	330	812	200	645	375	0.10	0.10	0.10	0.10	0.10	0.10	0.10	0.10	0.10	
		285+15	-	318+00	265	1,065	2,628	645	375	0.10	0.10	0.10	0.10	0.10	0.10	0.10	0.10	0.10	0.10	
		318+00	-	345+00	235	950	2,160	575	0.10	0.10	0.10	0.10	0.10	0.10	0.10	0.10	0.10	0.10	0.10	
MIDDLE LANE	MIDDLE LANE	158+00	-	249+76	735	3,575	7,344	2,395	1,180	0.25	0.25	0.25	0.25	0.25	0.25	0.25	0.25	0.25		
		158+00	-	345+00	285	1,380	2,831	860	420	0.25	0.25	0.25	0.25	0.25	0.25	0.25	0.25	0.25		
		249+76	-	285+15	265	1,280	2,628	860	375	0.25	0.25	0.25	0.25	0.25	0.25	0.25	0.25	0.25		
		285+15	-	318+00	235	1,140	2,160	765	0.25	0.25	0.25	0.25	0.25	0.25	0.25	0.25	0.25	0.25		
		318+00	-	345+00	235	1,140	2,160	765	0.25	0.25	0.25	0.25	0.25	0.25	0.25	0.25	0.25	0.25		
		158+00	-	345+00	1,350	5,570	11,440	3,405	2,165	0.33	0.33	0.33	0.33	0.33	0.33	0.33	0.33	0.33	0.33	
OUTSIDE LANE	OUTSIDE LANE	158+00	-	249+76	735	3,535	7,344	2,355	1,180	0.33	0.33	0.33	0.33	0.33	0.33	0.33	0.33	0.33		
		249+76	-	285+15	285	1,365	2,831	910	455	0.33	0.33	0.33	0.33	0.33	0.33	0.33	0.33	0.33		
		285+15	-	345+00	480	2,305	4,788	1,535	770	0.34	0.34	0.34	0.34	0.34	0.34	0.34	0.34	0.34		
		158+00	-	345+00	1,350	5,570	11,440	3,405	2,165	0.34	0.34	0.34	0.34	0.34	0.34	0.34	0.34	0.34		
AUX. LANE	AUX. LANE	167+87	-	180+62	100	445	--	280	165	--	--	--	--	--	--	--	--	--	--	
		228+63	-	239+99	90	395	--	250	145	--	--	--	--	--	--	--	--	--	--	
		244+13	-	251+69	60	260	--	165	95	--	--	--	--	--	--	--	--	--	--	
		265+97	-	276+20	80	355	--	225	130	--	--	--	--	--	--	--	--	--	--	
		280+24	-	287+30	55	245	--	155	90	--	--	--	--	--	--	--	--	--	--	
		306+14	-	322+34	130	565	--	365	210	--	--	--	--	--	--	--	--	--	--	
		327+43	-	332+62	45	190	--	120	70	--	--	--	--	--	--	--	--	--	--	
		140MA+00	-	146MA+71	105	218	--	170	170	--	--	--	--	--	--	--	--	--	--	--
		146MA+71	-	147MA+54	10	26	--	20	20	--	--	--	--	--	--	--	--	--	--	--
		151MB+74	-	157MB+60	85	179	--	140	140	--	--	--	--	--	--	--	--	--	--	--

CONTINUED ON NEXT PAGE

ASPHALT PAVEMENT ITEMS CONT.

CATEGORY	LOCATION	STA	TO	STA	TON	WEATHER PAVING	455.0605 HMA COLD	460.2000 COAT	460.2005 DENSITY PAVEMENT	460.2007 INCENTIVE	460.2010 DENSITY PAVEMENT	460.2010 AIR VOIDS	460.7223 HMA PAVEMENT	460.7224 HMA PAVEMENT	460.7624 HMA PAVEMENT	465.0125 ASPHALTIC SURFACE	SPV.0060.002 HMA PAVEMENT	SPV.0060.003 HMA PAVEMENT	DENSITY	
																				DOL
1000	RAMP MC	45MC+36	-	47MC+00	--	15	--	--	--	--	--	--	--	20	20	--	--	--	--	--
		47MC+00	-	54MC+24	--	240	--	--	--	--	--	--	--	385	385	--	--	--	--	--
		54MC+24	-	59MC+46	--	145	--	--	--	--	--	--	--	235	235	--	--	--	--	--
		59MC+46	-	66MC+00	--	115	--	--	--	--	--	--	--	180	180	--	--	--	--	--
		47+00MC	-	Right turn to 41N	--	25	--	--	--	--	--	--	--	45	45	--	--	--	--	--
		47+00MC	-	Right turn to Main st	--	25	--	--	--	--	--	--	--	40	40	--	--	--	--	--
	RAMP PA	11PA+42	-	18PA+37	--	110	--	--	--	--	--	--	--	180	180	--	--	--	--	--
	RAMP PB	187PB+31	-	191PB+27	--	50	--	--	--	--	--	--	--	75	75	--	--	--	--	--
	RAMP PC	98PC+75	-	103PC+78	--	80	--	--	--	--	--	--	--	130	130	--	--	--	--	--
		103PC+78	-	116PC+14	--	190	--	--	--	--	--	--	--	305	305	--	--	--	--	--
	RAMP OA	332OA+83	-	334OA+92	--	30	--	--	--	--	--	--	--	50	50	--	--	--	--	--
		334OA+92	-	339OA+00	--	55	--	--	--	--	--	--	--	85	85	--	--	--	--	--
		339OA+00	-	344OA+50	--	165	--	--	--	--	--	--	--	265	265	--	--	--	--	--
		344OA+50	-	345OA+84	--	25	--	--	--	--	--	--	--	40	40	--	--	--	--	--
		344OA+50	-	Right turn to CTH Q	--	15	--	--	--	--	--	--	--	20	20	--	--	--	--	--
TOTALS					5,570	9,210	3,060	23,485	44,880	34,320	21,900	2,385	14,885	640	3	3				

JOINT AND CRACK REPAIR

CATEGORY	ROADWAY	STA	TO	STA	TON
1000	IH41USH45 NB	158+08	-	197+50	144
		200+29	-	206+58	23
		209+03	-	275+00	242
		318+00	-	345+00	99
TOTAL					508

PATCHING ITEMS

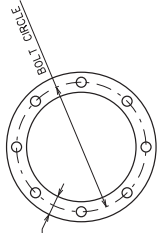
CATEGORY	ROADWAY	TON
1000	PROJECT ID 1100-36-70	50
TOTALS		50

Addendum No. 02  
ID 1100-36-70  
Revised Sheet 210  
January 10, 2019

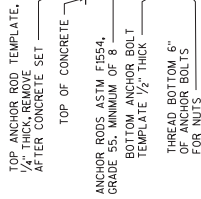
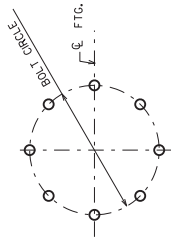


**GENERAL NOTES**

DRAWINGS SHALL NOT BE SCALED.  
 ALTERNATE FOUNDATION DESIGNS ARE NOT ALLOWED.  
 ALL STRUCTURAL STEEL MEMBERS, PLATES, ANCHOR RODS, H.S., BOLTS, NUTS AND WASHERS SHALL BE GALVANIZED PER SECTION 660 OF THE WISDOT STANDARD SPECIFICATIONS.  
 CONTRACTOR SHALL VERIFY DIMENSIONS PRIOR TO FABRICATION OF STRUCTURE.  
 WELD TEST AS PER AWS D11.  
 EXACT LOCATION OF HIGH MAST LIGHT BASE SHALL BE DETERMINED BY THE REGION LIGHTING ENGINEER.  
 CONTRACTOR SHALL VERIFY UTILITY CONFLICTS PRIOR TO CONSTRUCTION OF FOOTINGS.  
 POLE AND ANCHOR RODS TO BE DESIGNED TO AASHTO STANDARD SPECS. FOR HIGHWAY SIGNS, LUMINAIRES, AND TRAFFIC SIGNALS, 6TH ED WITH 2015 INTERIMS.  
 POLE FABRICATOR TO DESIGN AND SUPPLY POLE AND ANCHOR RODS IN ACCORDANCE WITH THE PLANS AND STANDARD SPECIFICATIONS.  
 OUTSIDE DIA. OF DRILLED SHAFT AT TOP IS DEPENDENT ON ANCHOR BOLT SIZE REQUIRED FOR POLE. MAINTAIN 4" MIN. COVER OF REINFORCEMENT.  
 INSTALL STRUCTURE ID PLAQUE PER S.D.D. ID A 4-3  
 SEE HIGH MAST LIGHT ELECTRICAL SHEETS FOR LUMINAIRE AND HARDWARE INFORMATION.



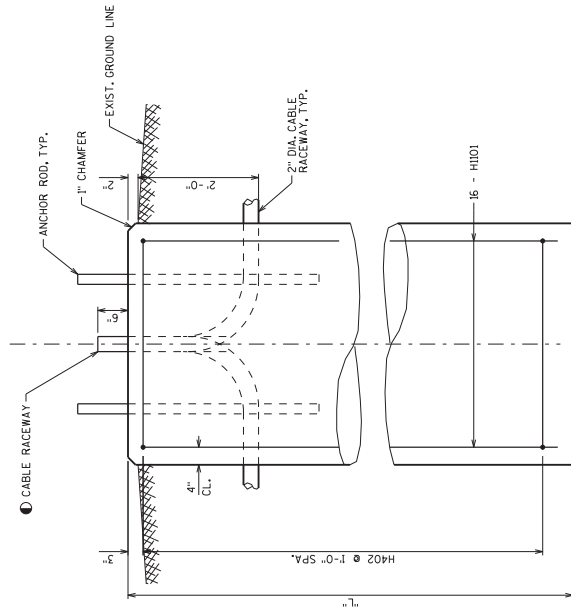
**TOP VIEW OF TOP & BOTTOM TEMPLATES**



**ANCHOR ROD DETAILS**

**DRILLED SHAFT PLAN**

REINFORCEMENT TO CLEAR ANCHOR BOLTS BY 1/2" MIN.



**DRILLED SHAFT ELEVATION**

SHAFT CASINGS, IF USED, SHALL BE REMOVED CONCURRENTLY WITH PLACING OF CONCRETE.  
 SEE HIGHMAST LIGHTING AND ELECTRICAL SHEETS FOR ORIENTATION OF CABLE RACEWAY.

**MATERIAL PROPERTIES:**  
 CONCRETE MASONRY  $f_c = 3,500$  P.S.I.  
 BAR STEEL REINFORCEMENT:  $f_y = 60,000$  P.S.I.  
 STRUCTURAL CARBON STEEL:  $f_y = 36,000$  P.S.I.  
 ANCHOR RODS, ASTM F1554, GRADE 55  $f_y = 55,000$  P.S.I.  
 ASTM A563A HEAVY HEX NUTS, AND ASTM F436 WASHERS.

**Addendum No. 02**  
**ID 1100-36-70**  
**Added Sheet 487A**  
**January 10, 2019**

STRUCTURE DESIGN CONTACTS:  
 STEVEN DOOCY (608) 261-6063  
 LAURA SHAREWALD (608) 267-9592

NO. DATE REVISION BY

**BUREAU OF STRUCTURES**  
 ACCEPTED *William L. Decker* 1/9/19  
 CHIEF STRUCTURES DESIGN ENGINEER DATE

**HIGH MAST LIGHT QUANTITIES**

TOWER NUMBER	POLE HEIGHT (FT)	"L" FEET	"DIA." FEET	H101	H402	CONCRETE MASONRY C.Y.	HIGH STRENGTH BAR STEEL REINFORCEMENT (LBS.)
L-67-131	150	35'-0"	4'-6"	34'-6"	13'-5"	21	3250
L-67-132	150	35'-0"	4'-6"	34'-6"	13'-5"	21	3250
L-67-133	150	35'-0"	4'-6"	34'-6"	13'-5"	21	3250
L-67-134	150	35'-0"	4'-6"	34'-6"	13'-5"	21	3250
L-67-135	150	35'-0"	4'-6"	34'-6"	13'-5"	21	3250
TOTAL						105	16250

High Mast Lighting, USH 41/45 - Main St. Interchange, Waukesha Co.

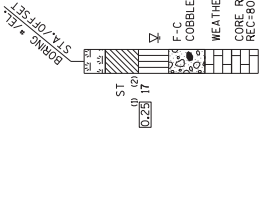
STATE PROJECT NUMBER

1100-36-70

MATERIAL SYMBOLS

	ASPHALT		TOPSOIL		PEAT
	CONCRETE		FILL		GRAVEL
	SAND		CLAY		SILT
	BOULDERS		LIMESTONE		BEDROCK (UNKNOWN)
	COBBLES		SANDSTONE		IGNEOUS/META
	SHALE				

LEGEND OF BORING



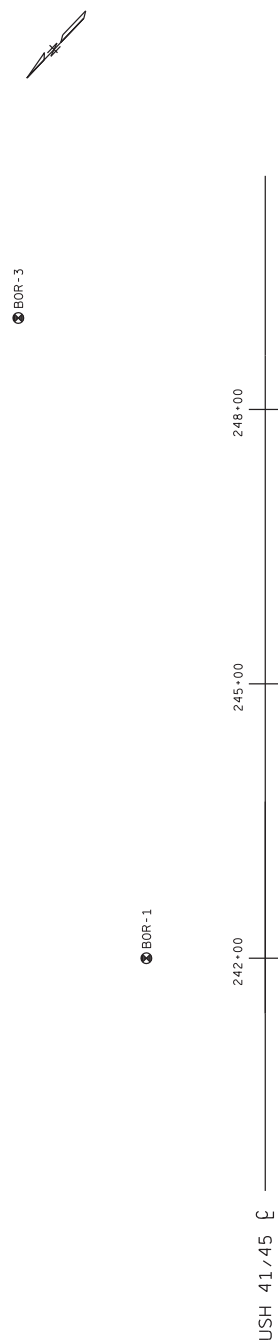
(1) UNCONFINED STRENGTH, AS DETERMINED BY A POCKET PENETROMETER (1/5")  
 (2) UNLESS OTHERWISE SPECIFIED, THE SPT 'N' VALUE IS BASED ON A 60 LB. HAMMER WITH AN ANVIL THAT HAS NOT BEEN CORRECTED FOR OVERBURDEN PRESSURE OR HAMMER EFFICIENCY.

▽ AT TIME OF DRILLING  
 ▼ END OF DRILLING  
 ▼ AFTER DRILLING

F-FINE M-MEDIUM C-COARSE ST-SHELBY TUBE

SUBSURFACE EXPLORATION FOR FOUNDATION DESIGN AND BIDDERS INFORMATION  
 BORINGS WERE MADE TO A DEPTH OF 670 FEET. UNLESS OTHERWISE INDICATED, THIS INFORMATION IS FOR INFORMATIONAL PURPOSES ONLY. THE CHARACTER OF SUBSURFACE MATERIALS FOUND AT THE SITE, BECAUSE THE INVESTIGATION IS VERY SMALL IN RELATION TO THE ENTIRE SITE, THE WISCONSIN DEPARTMENT OF TRANSPORTATION DOES NOT WARRANT THE ACCURACY OF THESE BORINGS. VARIATIONS IN SOIL CONDITIONS SHOULD BE EXPECTED AND FLUCTUATIONS IN GROUNDWATER LEVELS MAY OCCUR.

Addendum No. 02  
 ID 1100-36-70  
 Added Sheet 487B  
 January 10, 2019



ELEVATION	BOR-1 SIT 24200 20' LT OF CL		BOR-2 SIT 24500 200' RT OF CL		BOR-3 SIT 24800 20' LT OF CL	
	DESIGN VALUES C <sub>best</sub> / φ <sub>best</sub>	TEST VALUES SPT / SPT	DESIGN VALUES C <sub>best</sub> / φ <sub>best</sub>	TEST VALUES SPT / SPT	DESIGN VALUES C <sub>best</sub> / φ <sub>best</sub>	TEST VALUES SPT / SPT
770						
760						
750						
740						
730						
720						
710						
700						
690						
680						
670						

NO.	DATE	REVISION	BY
STATE OF WISCONSIN DEPARTMENT OF TRANSPORTATION STRUCTURES DESIGN SECTION			
STRUCTURE L-67-131 TO 135			
DRAWN BY		CHECKED BY	
LLS		LLS	
SUBSURFACE EXPLORATION			SHEET 2
487B			

High Mast Lighting, USH 41/45 - Main St. Interchange, Waukesha Co.



Addendum No. 02  
ID 1100-36-70  
Added Sheet 487C  
January 10, 2019

● BOR-4

● BOR-5

ELEVATION	DEPTH (ft)	SOIL TYPE	DESIGN VALUES	
			C <sub>best</sub>	φ <sub>best</sub>
770	0	TOPSOIL		
760	10	F	1000	20
750	20	F	2000	0
740	30	F	0	32
730	40	F		
720	50	F		
710	60	F	0	35
700	70	F	0	38
690	80	F		
680	90	F		

STATE PROJECT NUMBER  
**1100-36-70**

**MATERIAL SYMBOLS**

ASPHALT	TOPSOIL	PEAT
CONCRETE	FILL	GRAVEL
SAND	CLAY	SILT
BOULDERS	LIMESTONE	BEDROCK (UNKNOWN)
COBBLES	SANDSTONE	IGNEOUS/META
SHALE		

LEGEND OF BORING

UNCONFINED STRENGTH, AS DETERMINED BY A POCKET PENETROMETER (15F)

UNLESS OTHERWISE SPECIFIED THE SPT 'N' VALUE IS BASED ON THE 40T 'N' VALUE. PRESENTED HAS NOT BEEN CORRECTED FOR OVERBURDEN PRESSURE OR HAMMER EFFICIENCY.

GROUND WATER ELEVATION

▽ AT TIME OF DRILLING  
▽ AFTER DRILLING

ABBREVIATIONS  
F-FINE M-MEDIUM C-COARSE ST-SHELBY TUBE

SUBSURFACE EXPLORATION FOR FOUNDATION DESIGN AND BIDDERS INFORMATION

BORINGS WERE MADE TO A DEPTH OF APPROXIMATELY 90 FEET TO OBTAIN INFORMATION CONCERNING THE CHARACTER OF SUBSURFACE MATERIALS FOUND AT THE SITE. BECAUSE THE INVESTIGATED AREA IS VERY SMALL IN RELATION TO THE ENTIRE SITE, THE WISCONSIN DEPARTMENT OF TRANSPORTATION DOES NOT GUARANTEE THE ACCURACY OF THESE BORINGS. CONDITIONS BELOW OR BEYOND THESE BORINGS, VARIATIONS IN SOIL CONDITIONS SHOULD BE EXPECTED AND FLUCTUATIONS IN GROUNDWATER LEVELS MAY OCCUR.

NO. DATE REVISION BY

STATE OF WISCONSIN  
DEPARTMENT OF TRANSPORTATION  
STRUCTURES DESIGN SECTION

STRUCTURE L-67-131 TO 135

DESIGNED BY: BRANN SAO/CED. LLS  
CHECKED BY: LLS

SUBSURFACE EXPLORATION SHEET 3  
**487C**



REMOVING ASPHALTIC SURFACE MILLING ITEMS

CATEGORY	LOCATION	STA. TO STA.	REMARKS	TON	REMARKS
1000	H41/USH45 SB	172+00 - 172+57	INSIDE SHOULDER AND INSIDE LANE	50	
		172+00 - 217+01	MIDDLE LANE AND OUTSIDE LANE	3,500	
		172+00 - 284+03	OUTSIDE SHOULDER	2,500	
		172+00 - 182+38	AUXILIARY LANE	350	
		172+57 - 178+88	INSIDE SHOULDER AND INSIDE LANE	400	
		172+00 - 346+00	INSIDE SHOULDER AND INSIDE LANE	140	
		178+88 - 180+28	INSIDE SHOULDER AND INSIDE LANE	100	
		180+28 - 181+66	INSIDE SHOULDER AND INSIDE LANE	100	
		181+66 - 188+15	INSIDE SHOULDER AND INSIDE LANE	400	
		188+15 - 189+28	INSIDE SHOULDER AND INSIDE LANE	50	
		189+28 - 194+81	INSIDE SHOULDER AND INSIDE LANE	350	
		194+81 - 195+63	INSIDE SHOULDER AND INSIDE LANE	50	
		195+63 - 200+00	INSIDE SHOULDER AND INSIDE LANE	300	
		200+00 - 201+05	INSIDE SHOULDER AND INSIDE LANE	50	
		201+05 - 209+46	INSIDE SHOULDER AND INSIDE LANE	500	
		209+46 - 210+76	INSIDE SHOULDER AND INSIDE LANE	100	
		210+46 - 221+04	INSIDE SHOULDER AND INSIDE LANE	650	
		217+01 - 217+98	MIDDLE LANE AND OUTSIDE LANE	50	
		217+98 - 223+20	MIDDLE LANE AND OUTSIDE LANE	400	
		221+04 - 221+40	INSIDE SHOULDER AND INSIDE LANE	25	
		221+40 - 224+04	INSIDE SHOULDER AND INSIDE LANE	150	
		223+20 - 223+84	MIDDLE LANE AND OUTSIDE LANE	50	
		223+84 - 284+03	MIDDLE LANE AND OUTSIDE LANE	4,650	
		224+04 - 224+81	INSIDE SHOULDER AND INSIDE LANE	50	
		224+10 - 233+71	AUXILIARY LANE	350	
		234+81 - 233+67	INSIDE SHOULDER AND INSIDE LANE	550	
		233+67 - 234+00	INSIDE SHOULDER AND INSIDE LANE	20	
		234+00 - 279+88	INSIDE SHOULDER AND INSIDE LANE	2,850	
		249+50 - 274+60	AUXILIARY LANE	850	
		279+88 - 280+08	INSIDE SHOULDER AND INSIDE LANE	15	
		280+08 - 285+99	INSIDE SHOULDER AND INSIDE LANE	350	
		284+03 - 293+00	MIDDLE LANE AND OUTSIDE LANE	700	
		284+50 - 293+00	AUXILIARY LANE	300	
		285+99 - 286+23	INSIDE SHOULDER AND INSIDE LANE	15	
		286+23 - 287+57	INSIDE SHOULDER AND INSIDE LANE	100	
		286+51 - 293+00	OUTSIDE SHOULDER	200	
		287+57 - 287+89	INSIDE SHOULDER AND INSIDE LANE	20	
		287+89 - 295+63	INSIDE SHOULDER AND INSIDE LANE	500	
		293+00 - 346+00	MIDDLE LANE AND OUTSIDE LANE	4,100	
		293+00 - 346+00	OUTSIDE SHOULDER	1,550	
		295+63 - 296+00	INSIDE SHOULDER AND INSIDE LANE	25	
		296+00 - 300+75	INSIDE SHOULDER AND INSIDE LANE	300	
		300+75 - 302+42	INSIDE SHOULDER AND INSIDE LANE	100	
		302+42 - 304+39	INSIDE SHOULDER AND INSIDE LANE	100	
		304+39 - 304+64	INSIDE SHOULDER AND INSIDE LANE	20	
		304+64 - 319+29	INSIDE SHOULDER AND INSIDE LANE	900	
		319+29 - 321+39	INSIDE SHOULDER AND INSIDE LANE	150	
		321+39 - 324+53	INSIDE SHOULDER AND INSIDE LANE	200	
		323+84 - 337+00	AUXILIARY LANE	450	
		324+53 - 334+85	INSIDE SHOULDER AND INSIDE LANE	670	
1000	H41/USH45 SB	334+85 - 337+24	INSIDE SHOULDER AND INSIDE LANE	150	
		337+24 - 344+75	INSIDE SHOULDER AND INSIDE LANE	490	
		339+42 - 341+89	AUXILIARY LANE	100	
		344+75 - 346+00	INSIDE SHOULDER AND INSIDE LANE	100	
		233MD+70 - 240MD+00		300	
		241MD+70 - 245MD+79		200	
		245MD+79 - 249MD+58		250	
		249MD+58 - 253MD+55		350	
		241ME+21 - 247ME+97		250	
		104PD+05 - 106PD+23		150	
		106PD+23 - 108PD+49		150	
		108PD+49 - 111PD+32		150	
		111PD+32 - 116PD+87		200	
		3FE+58 - 6FE+40		100	
		341QB+79 - 353QB+83		1,000	
		TOTALS		34,290	

Addendum No. 02  
ID 1100-36-71  
Revised Sheet 101  
January 10, 2019

Addendum No. 02  
ID 1100-36-71  
Revised Sheet 104  
January 10, 2019

ASPHALT PAVEMENT ITEMS

CATEGORY	LOCATION	STA	TO STA	WEATHER PAVING	450.4000 HMA COLD			460.2000 HMA COLD			460.2005 INCENTIVE			460.2223 HMA			460.7624 HMA			460.7624 HMA			SPV 0.060.002	SPV 0.060.002	SPV 0.060.003	PWL TEST STRIP	DENSITY									
					TACK COAT	DENSITY HMA	PAVEMENT	DENSITY PVL HMA	PAVEMENT	DENSITY HMA	PAVEMENT	DENSITY HMA	PAVEMENT	DENSITY HMA	PAVEMENT	DENSITY HMA	PAVEMENT	DENSITY HMA	PAVEMENT	DENSITY HMA	PAVEMENT	DENSITY HMA						PAVEMENT	DENSITY HMA	PAVEMENT	DENSITY HMA	PAVEMENT	DENSITY HMA	PAVEMENT	DENSITY HMA	PAVEMENT
1000	<u>INSIDE LANE</u>																																			
	172+00		172+57			5		15	46		15	46	15		10	10					5		5		5		0.02	0.02								
	172+57		178+88			55		225	505		225	505	225		135	135					90		90		90		0.02	0.02								
	178+88		180+28			10		50	112		50	112	50		30	30					20		20		20		0.02	0.02								
	180+28		181+66			10		50	110		50	110	50		30	30					20		20		20		0.02	0.02								
	181+66		188+15			50		215	519		215	519	215		130	130					85		85		85		0.02	0.02								
	188+15		189+28			10		40	90		40	90	40		25	25					15		15		15		0.02	0.02								
	189+28		194+81			45		180	442		180	442	180		70	70					55		55		55		0.02	0.02								
	194+81		195+53			5		25	58		25	58	25		10	10					10		10		10		0.02	0.02								
	195+53		200+00			35		145	358		145	358	145		90	90					55		55		55		0.02	0.02								
	200+00		201+05			10		35	84		35	84	35		20	20					15		15		15		0.02	0.02								
	201+05		209+46			65		275	673		275	673	275		165	165					110		110		110		0.02	0.02								
	209+46		210+76			10		50	104		50	104	50		30	30					20		20		20		0.02	0.02								
	210+76		221+04			80		335	822		335	822	335		205	205					130		130		130		0.02	0.02								
	221+04		221+40			5		15	29		15	29	15		10	10					5		5		5		0.02	0.02								
	221+40		224+04			20		85	211		85	211	85		50	50					35		35		35		0.03	0.03								
	224+04		224+81			5		25	62		25	62	25		15	15					10		10		10		0.03	0.03								
	224+81		233+67			70		290	709		290	709	290		175	175					115		115		115		0.03	0.03								
	233+67		234+00			5		10	26		10	26	10		5	5					5		5		5		0.03	0.03								
	234+00		249+76			125		510	1,261		510	1,261	510		310	310					200		200		200		0.03	0.03								
	249+76		279+88			240		980	2,410		980	2,410	980		595	595					385		385		385		0.03	0.03								
	279+88		280+08			10		10	16		10	16	10		5	5					5		5		5		0.03	0.03								
	280+08		285+99			45		190	473		190	473	190		75	75					75		75		75		0.03	0.03								
	285+99		286+23			10		19	19		10	19	10		5	5					5		5		5		0.03	0.03								
	286+23		287+57			10		40	107		40	107	40		25	25					15		15		15		0.03	0.03								
	287+57		287+89			5		10	26		10	26	10		5	5					5		5		5		0.03	0.03								
	287+89		295+63			60		255	619		255	619	255		155	155					100		100		100		0.03	0.03								
	295+63		296+00			5		10	30		10	30	10		5	5					5		5		5		0.03	0.03								
	296+00		300+75			40		155	380		155	380	155		95	95					60		60		60		0.03	0.03								
	300+75		302+42			15		60	134		60	134	60		35	35					25		25		25		0.03	0.03								
	302+42		304+39			15		65	158		65	158	65		40	40					25		25		25		0.03	0.03								
	304+39		304+64			10		10	20		10	20	10		5	5					5		5		5		0.03	0.03								
304+64		319+29			115		490	1,172		490	1,172	490		290	290					200		200		200		0.03	0.03									
319+29		321+39			20		75	168		75	168	75		45	45					30		30		30		0.03	0.03									
321+39		324+53			25		100	251		100	251	100		60	60					40		40		40		0.03	0.03									
324+53		334+85			90		365	826		365	826	365		220	220					145		145		145		0.03	0.03									
334+85		337+24			20		75	191		75	191	75		45	45					30		30		30		0.03	0.03									
337+24		344+75			65		265	601		265	601	265		160	160					105		105		105		0.03	0.03									
344+75		346+00			10		40	100		40	100	40		25	25					15		15		15		0.03	0.03									
<u>MIDDLE LANE</u>																																				
172+00		249+76			620		3,050	6,221		3,050	6,221	3,050		2,040	2,040					1,010		1,010		1,010		0.33	0.33									
172+00		346+00			285		1,380	2,831		1,380	2,831	1,380		855	855					455		455		455		0.33	0.33									
249+76		285+15			485		2,380	4,868		2,380	4,868	2,380		1,600	1,600					780		780		780		0.34	0.34									
285+15		346+00			360		1,745	3,601		1,745	3,601	1,745		1,165	1,165					580		580		580		0.14	0.14									
346+00		217+01			10		40	78		40	78	40		25	25					15		15		15		0.14	0.14									
217+01		217+98			40		200	418		200	418	200		135	135					65		65		65		0.14	0.14									
217+98		223+20			5		30	51		30	51	30		10	10					10		10		10		0.14	0.14									
223+20		223+84			205		1,000	2,074		1,000	2,074	1,000		665	665					335		335		335		0.14	0.14									
223+84		249+76			285		1,365	2,831		1,365	2,831	1,365		910	910					455		455		455		0.15	0.15									
249+76		285+15			485		2,350	4,868		2,350	4,868	2,350		1,570	1,570					780		780		780		0.15	0.15									
285+15		346+00			360		1,745	3,601		1,745	3,601	1,745		1,165	1,165					580		580		580		0.14	0.14									
346+00		217+01			10		40	78		40	78	40		25	25					15		15		15		0.14	0.14									
217+01		217+98			40		200	418		200	418	200		135	135					65		65		65		0.14	0.14									
217+98		223+20			5		30	51		30	51	30		10	10					10		10		10		0.14	0.14									
223+20		223+84			205		1,000	2,074		1,000	2,074	1,000		665	665					335		335		335		0.14	0.14									
223+84		249+76			285		1,365	2,831		1,365	2,831	1,365		9																						

ASPHALT PAVEMENT ITEMS CONT.

CATEGORY	LOCATION	STA	TO	STA	450.4000 HMA COLD WEATHER PAVING		455.0805 TACK COAT		460.2000 DENSITY HMA PAVEMENT		460.2005 DENSITY PWL HMA PAVEMENT		460.2007 INCENTIVE		460.2010 AIRVOIDS HMA PAVEMENT		460.7222 HMA PAVEMENT 3 HT 58-28 S 4 HT 58-28 V		460.7624 HMA PAVEMENT 4 HT 58-28 V		SPV.0060.002 HMA PAVEMENT		SPV.0060.003 HMA PAVEMENT		
					TON	GAL	DOL	DOL	DOL	DOL	DOL	DOL	DOL	DOL	TON	TON	TON	TON	TON	TON	EACH	EACH	EACH	EACH	DENSITY
1000	INSIDE SHLD	172+00	-	346+00	5,190	1,255	--	--	--	5,190	3,165	--	--	2,025	--	--	--	--	--	--	--	--	--	--	--
	OUTSIDE SHLD	172+00	-	186+81	--	100	--	--	430	270	--	--	--	160	--	--	--	--	--	--	--	--	--	--	--
		186+81	-	189+56	--	20	--	--	85	55	--	--	--	30	--	--	--	--	--	--	--	--	--	--	--
		189+56	-	2477+98	--	390	--	--	1,695	1,070	--	--	--	625	--	--	--	--	--	--	--	--	--	--	--
		274+60	-	284+03	--	65	--	--	275	175	--	--	--	100	--	--	--	--	--	--	--	--	--	--	--
		284+03	-	284+50	--	--	--	--	10	5	--	--	--	5	--	--	--	--	--	--	--	--	--	--	--
		286+51	-	326+00	--	265	--	--	1,145	725	--	--	--	420	--	--	--	--	--	--	--	--	--	--	--
		326+00	-	339+42	--	100	--	--	430	270	--	--	--	160	--	--	--	--	--	--	--	--	--	--	--
		339+42	-	341+89	--	10	--	--	40	25	--	--	--	15	--	--	--	--	--	--	--	--	--	--	--
		341+89	-	346+00	--	25	--	--	120	75	--	--	--	45	--	--	--	--	--	--	--	--	--	--	--
	AUX LANE	172+00	-	182+38	--	85	--	--	365	230	--	--	--	135	--	--	--	--	--	--	--	--	--	--	--
		224+00	-	233+71	--	80	--	--	340	215	--	--	--	125	--	--	--	--	--	--	--	--	--	--	--
		247+98	-	274+60	--	215	--	--	925	565	--	--	--	340	--	--	--	--	--	--	--	--	--	--	--
		284+50	-	293+00	--	70	--	--	295	185	--	--	--	110	--	--	--	--	--	--	--	--	--	--	--
		323+84	-	337+00	--	105	--	--	460	290	--	--	--	170	--	--	--	--	--	--	--	--	--	--	--
		337+00	-	339+42	--	20	--	--	85	55	--	--	--	30	--	--	--	--	--	--	--	--	--	--	--
		339+42	-	341+89	--	20	--	--	85	55	--	--	--	30	--	--	--	--	--	--	--	--	--	--	--
	RAMP MD	233MD+70	-	241MD+11	--	125	--	--	269	210	--	--	--	210	--	--	--	--	--	--	--	--	--	--	--
		241MD+11	-	243MD+96	--	45	--	--	96	75	--	--	--	75	--	--	--	--	--	--	--	--	--	--	--
		243MD+96	-	245MD+79	--	45	--	--	90	70	--	--	--	70	--	--	--	--	--	--	--	--	--	--	--
		245MD+79	-	249MD+58	--	105	--	--	211	165	--	--	--	165	--	--	--	--	--	--	--	--	--	--	--
		249MD+58	-	251MD+69	--	75	--	--	160	125	--	--	--	125	--	--	--	--	--	--	--	--	--	--	--
		251MD+69	-	252MD+41	--	15	--	--	26	20	--	--	--	20	--	--	--	--	--	--	--	--	--	--	--
		252MD+41	-	253MD+55	--	30	--	--	64	50	--	--	--	50	--	--	--	--	--	--	--	--	--	--	--
		252MD+55	-	Right turn	--	20	--	--	38	30	--	--	--	30	--	--	--	--	--	--	--	--	--	--	--
		Right turn	-	to 41N	--	25	--	--	51	40	--	--	--	40	--	--	--	--	--	--	--	--	--	--	--
		to 41N	-	Right turn	--	--	--	--	--	--	--	--	--	--	--	--	--	--	--	--	--	--	--	--	--
		Right turn	-	to Main st	--	--	--	--	--	--	--	--	--	--	--	--	--	--	--	--	--	--	--	--	--
	RAMP ME	241ME+21	-	247ME+97	--	85	--	--	173	135	--	--	--	135	--	--	--	--	--	--	--	--	--	--	--
	RAMP PD	104PD+05	-	106PD+23	--	50	--	--	109	85	--	--	--	85	--	--	--	--	--	--	--	--	--	--	--
		106PD+23	-	108PD+49	--	60	--	--	128	100	--	--	--	100	--	--	--	--	--	--	--	--	--	--	--
		108PD+49	-	111PD+32	--	60	--	--	122	95	--	--	--	95	--	--	--	--	--	--	--	--	--	--	--
		111PD+32	-	116PD+87	--	55	--	--	115	90	--	--	--	90	--	--	--	--	--	--	--	--	--	--	--
	RAMP RE	3PE+58	-	6PE+40	--	40	--	--	77	60	--	--	--	60	--	--	--	--	--	--	--	--	--	--	--
	RAMP QB	341QB+79	-	353QB+56	--	390	--	--	819	640	--	--	--	640	--	--	--	--	--	--	--	--	--	--	--
		353QB+56	-	353QB+83	--	5	--	--	13	10	--	--	--	10	--	--	--	--	--	--	--	--	--	--	--
	TOTALS				5,190	8,235	2,560	21,880	41,760	31,300	20,055	2,000	13,385	3											

Addendum No. 02  
ID 1100-36-71  
Revised Sheet 105  
January 10, 2019



Proposal Schedule of Items

Proposal ID: 20190115014 Project(s): 1100-36-70, 1100-36-71

Federal ID(s): WISC 2019074, WISC 2019075

SECTION: 0001

Contract Items

Alt Set ID:

Alt Mbr ID:

Proposal Line Number	Item ID Description	Approximate Quantity and Units	Unit Price	Bid Amount
0002	203.0100 Removing Small Pipe Culverts	1.000 EACH	_____.	_____.
0004	203.0200 Removing Old Structure (station) 001. Station 154+35	LS	LUMP SUM	_____.
0006	204.0100 Removing Pavement	2,710.000 SY	_____.	_____.
0008	204.0125 Removing Asphaltic Surface Milling	72,450.000 TON	_____.	_____.
0010	204.0150 Removing Curb & Gutter	770.000 LF	_____.	_____.
0012	204.0155 Removing Concrete Sidewalk	200.000 SY	_____.	_____.
0014	204.0157 Removing Concrete Barrier	1,164.000 LF	_____.	_____.
0016	204.0165 Removing Guardrail	93.000 LF	_____.	_____.
0018	204.0170 Removing Fence	270.000 LF	_____.	_____.
0020	204.0195 Removing Concrete Bases	52.000 EACH	_____.	_____.
0022	204.0220 Removing Inlets	1.000 EACH	_____.	_____.
0024	204.0245 Removing Storm Sewer (size) 001. 12- Inch	8.000 LF	_____.	_____.
0026	204.0245 Removing Storm Sewer (size) 002. 15- Inch	53.000 LF	_____.	_____.
0028	204.0245 Removing Storm Sewer (size) 003. 24- Inch	35.000 LF	_____.	_____.
0030	204.9060.S Removing (item description) 101. Distribution Center	5.000 EACH	_____.	_____.



Proposal Schedule of Items

Proposal ID: 20190115014 Project(s): 1100-36-70, 1100-36-71

Federal ID(s): WISC 2019074, WISC 2019075

SECTION: 0001

Contract Items

Alt Set ID:

Alt Mbr ID:

Proposal Line Number	Item ID Description	Approximate Quantity and Units	Unit Price	Bid Amount
0090	416.1710 Concrete Pavement Repair	50.000 SY	_____	_____
0092	416.1715 Concrete Pavement Repair SHES	25.000 SY	_____	_____
0094	416.1725 Concrete Pavement Replacement SHES	170.000 SY	_____	_____
0096	450.4000 HMA Cold Weather Paving	10,760.000 TON	_____	_____
0098	455.0605 Tack Coat	17,445.000 GAL	_____	_____
0100	460.2000 Incentive Density HMA Pavement	5,690.000 DOL	1.00000	5,690.00
0102	460.2005 Incentive Density PWL HMA Pavement	45,495.000 DOL	1.00000	45,495.00
0104	460.2007 Incentive Density HMA Pavement Longitudinal Joints	86,640.000 DOL	1.00000	86,640.00
0106	460.2010 Incentive Air Voids HMA Pavement	65,770.000 DOL	1.00000	65,770.00
0108	460.7223 HMA Pavement 3 HT 58-28 S	42,045.000 TON	_____	_____
0110	460.7224 HMA Pavement 4 HT 58-28 S	4,385.000 TON	_____	_____
0112	460.7624 HMA Pavement 4 HT 58-28 V	28,250.000 TON	_____	_____
0114	465.0110 Asphaltic Surface Patching	100.000 TON	_____	_____
0116	465.0125 Asphaltic Surface Temporary	640.000 TON	_____	_____
0118	495.1000.S Cold patch	20.000 TON	_____	_____
0120	502.0100 Concrete Masonry Bridges	5.000 CY	_____	_____



Proposal Schedule of Items

Proposal ID: 20190115014 Project(s): 1100-36-70, 1100-36-71

Federal ID(s): WISC 2019074, WISC 2019075

SECTION: 0001

Contract Items

Alt Set ID:

Alt Mbr ID:

Proposal Line Number	Item ID Description	Approximate Quantity and Units	Unit Price	Bid Amount
0466	658.0500 Pedestrian Push Buttons	2.000 EACH	_____.	_____.
0468	658.5069 Signal Mounting Hardware (location) 301. USH 41/45 SB Ramp/Fond Du Lac Ave. & STH 145	LS	LUMP SUM	_____.
0470	659.0400 Luminaires High Mast Lighting LED	24.000 EACH	_____.	_____.
0472	659.0600 Underdeck Lighting (location) 101. CTH Q - EB	LS	LUMP SUM	_____.
0474	659.0600 Underdeck Lighting (location) 102. CTH Q - WB	LS	LUMP SUM	_____.
0476	659.1125 Luminaires Utility LED C	38.000 EACH	_____.	_____.
0478	659.1130 Luminaires Utility LED D	133.000 EACH	_____.	_____.
0480	659.1215 Luminaires Underdeck LED C	4.000 EACH	_____.	_____.
0482	659.2230 Lighting Control Cabinets 240/480 30- Inch	2.000 EACH	_____.	_____.
0504	662.6020.S Ramp Closure Barricade Rack 2-Unit	2.000 EACH	_____.	_____.
0506	690.0150 Sawing Asphalt	410.000 LF	_____.	_____.
0508	690.0250 Sawing Concrete	39,930.000 LF	_____.	_____.
0510	715.0415 Incentive Strength Concrete Pavement	1,220.000 DOL	1.00000	1,220.00
0512	715.0502 Incentive Strength Concrete Structures	500.000 DOL	1.00000	500.00
0514	740.0440 Incentive IRI Ride	44,865.000 DOL	1.00000	44,865.00



Proposal Schedule of Items

Proposal ID: 20190115014 Project(s): 1100-36-70, 1100-36-71

Federal ID(s): WISC 2019074, WISC 2019075

SECTION: 0001

Contract Items

Alt Set ID:

Alt Mbr ID:

Proposal Line Number	Item ID Description	Approximate Quantity and Units	Unit Price	Bid Amount
0516	ASP.1T0A On-the-Job Training Apprentice at \$5.00/HR	4,800.000 HRS	5.00000	24,000.00
0518	ASP.1T0G On-the-Job Training Graduate at \$5.00/HR	9,000.000 HRS	5.00000	45,000.00
0520	SPV.0060 Special 001. Repair and Regrout Structure Pipe Holes	5.000 EACH	_____.	_____.
0522	SPV.0060 Special 002. HMA Percent Within Limits (PWL) Test Strip Volumetrics	6.000 EACH	_____.	_____.
0524	SPV.0060 Special 003. HMA Percent Within Limits (PWL) Test Strip Density	6.000 EACH	_____.	_____.
0526	SPV.0060 Special 004. Traffic Control Local Road Lane Closures	10.000 EACH	_____.	_____.
0528	SPV.0060 Special 005. Traffic Control Close-Open Freeway Entrance Ramp	600.000 EACH	_____.	_____.
0530	SPV.0060 Special 006. Field Facilities Office Space	1.000 EACH	_____.	_____.
0532	SPV.0060 Special 007. Sand Bags	200.000 EACH	_____.	_____.
0534	SPV.0060 Special 101. Poles Wood 60-FT	6.000 EACH	_____.	_____.
0536	SPV.0060 Special 102. Poles Wood 35-FT	2.000 EACH	_____.	_____.
0538	SPV.0060 Special 103. Wood Pole Lighting 60-FT	55.000 EACH	_____.	_____.
0540	SPV.0060 Special 104. Wood Pole Lighting 35-FT	3.000 EACH	_____.	_____.
0542	SPV.0060 Special 105. Luminaires Utility HPS 1000 Watts Floodlight	55.000 EACH	_____.	_____.



Proposal Schedule of Items

Proposal ID: 20190115014 Project(s): 1100-36-70, 1100-36-71

Federal ID(s): WISC 2019074, WISC 2019075

SECTION: 0001

Contract Items

Alt Set ID:

Alt Mbr ID:

Proposal Line Number	Item ID Description	Approximate Quantity and Units	Unit Price	Bid Amount
0544	SPV.0060 Special 106. Luminaires Utility HPS 400 Watts Floodlight	3.000 EACH	_____.	_____.
0546	SPV.0060 Special 107. Lighting Units Salvaged	1.000 EACH	_____.	_____.
0548	SPV.0060 Special 108. Concrete Bases Type HF3	59.000 EACH	_____.	_____.
0550	SPV.0060 Special 109. Poles Type F	63.000 EACH	_____.	_____.
0552	SPV.0060 Special 110. Luminaire Arms Single Member 4-Inch Clamp 4-FT	126.000 EACH	_____.	_____.
0554	SPV.0060 Special 111. Lighting Control Cabinets 277/480 VAC	3.000 EACH	_____.	_____.
0556	SPV.0060 Special 112. Concrete Bases Type B	5.000 EACH	_____.	_____.
0558	SPV.0060 Special 201. Salvage and Reinstall Fiber Optic Junction Box	1.000 EACH	_____.	_____.
0560	SPV.0060 Special 301. Traffic Signal Electrical Riser	1.000 EACH	_____.	_____.
0562	SPV.0075 Special 001. Pavement Cleanup Project 1100-36-70	100.000 HRS	_____.	_____.
0564	SPV.0075 Special 002. Pavement Cleanup Project 1100-36-71	100.000 HRS	_____.	_____.
0566	SPV.0090 Special 001. Concrete Barrier, Single Faced 32-Inch, Special	165.000 LF	_____.	_____.
0568	SPV.0090 Special 002. Concrete Barrier, Double Faced 51-Inch, Special	660.000 LF	_____.	_____.
0570	SPV.0090 Special 101. Cable In Duct 3-4 AWG, 1-8 AWG	650.000 LF	_____.	_____.





Proposal Schedule of Items

Proposal ID: 20190115014 Project(s): 1100-36-70, 1100-36-71

Federal ID(s): WISC 2019074, WISC 2019075

SECTION: 0001

Contract Items

Alt Set ID:

Alt Mbr ID:

Proposal Line Number	Item ID Description	Approximate Quantity and Units	Unit Price	Bid Amount
0572	SPV.0090 Special 102. Cable In Duct 3-2 AWG, 1-8 AWG	650.000 LF	_____.	_____.
0574	SPV.0090 Special 103. Cable Aerial Aluminum 6 AWG Quadruplex	4,490.000 LF	_____.	_____.
0576	SPV.0090 Special 104. Cable Aerial Aluminum 4 AWG Quadruplex	8,050.000 LF	_____.	_____.
0578	SPV.0090 Special 105. Cable Aerial Aluminum 2 AWG Quadruplex	6,240.000 LF	_____.	_____.
0580	SPV.0090 Special 106. Cable Aerial Aluminum 6 AWG Triplex	1,440.000 LF	_____.	_____.
0582	SPV.0090 Special 107. Cable Aerial Aluminum 4 AWG Triplex	7,885.000 LF	_____.	_____.
0584	SPV.0090 Special 201. Pipe Underdrain Wrapped 6-Inch Special	1,128.000 LF	_____.	_____.
0586	SPV.0105 Special 001. Survey Project 1100-36-70	LS	LUMP SUM	_____.
0588	SPV.0105 Special 002. Survey Project 1100-36-71	LS	LUMP SUM	_____.
0590	SPV.0105 Special 101. Maintenance of Lighting System	LS	LUMP SUM	_____.
0592	SPV.0105 Special 102. Lighting System Integrator	LS	LUMP SUM	_____.
0594	SPV.0105 Special 103. Lighting System Survey	LS	LUMP SUM	_____.
0596	SPV.0165 Special 001. Concrete Barrier Surface Repair	385.000 SF	_____.	_____.
0598	SPV.0180 Special 001. Concrete Drainage Outlet	100.000 SY	_____.	_____.



Proposal Schedule of Items

Proposal ID: 20190115014 Project(s): 1100-36-70, 1100-36-71

Federal ID(s): WISC 2019074, WISC 2019075

SECTION: 0001

Contract Items

Alt Set ID:

Alt Mbr ID:

Proposal Line Number	Item ID Description	Approximate Quantity and Units	Unit Price	Bid Amount
0600	SPV.0195 Special 001. Joint and Crack Repair	646.000 TON		
0602	660.0100 High Mast Foundation (location) 101. HML-67-131	LS	LUMP SUM	
0604	660.0100 High Mast Foundation (location) 102. HML-67-132	LS	LUMP SUM	
0606	660.0100 High Mast Foundation (location) 103. HML-67-133	LS	LUMP SUM	
0608	660.0100 High Mast Foundation (location) 104. HML-67-134	LS	LUMP SUM	
0610	660.0100 High Mast Foundation (location) 105. HML-67-135	LS	LUMP SUM	
0612	660.0200 High Mast Lighting Tower (location) 101. HML-67-131	LS	LUMP SUM	
0614	660.0200 High Mast Lighting Tower (location) 102. HML-67-132	LS	LUMP SUM	
0616	660.0200 High Mast Lighting Tower (location) 103. HML-67-133	LS	LUMP SUM	
0618	660.0200 High Mast Lighting Tower (location) 104. HML-67-134	LS	LUMP SUM	
0620	660.0200 High Mast Lighting Tower (location) 105. HML-67-135	LS	LUMP SUM	

Section: 0001

Total: \_\_\_\_\_

Total Bid: \_\_\_\_\_