



Wisconsin Department of Transportation

Division of Transportation Systems Development

Bureau of Project Development
4822 Madison Yards Way, 4th Floor South
Madison, WI 53705

Telephone: (608) 266-1631
Facsimile (FAX): (608) 266-8459

November 4, 2019

NOTICE TO ALL CONTRACTORS:

Proposal #03: 1070-04-75, WISC 2019 673
La Crosse - Sparta
STH 157 Interchange
IH 90
La Crosse County

Letting of November 12, 2019

This is Addendum No. 01, which provides for the following:

Plan Sheets:

Revised Plan Sheets	
Plan Sheet	Plan Sheet Title (brief description of changes to sheet)
57	Show Pedestrian Push Buttons and associated R10-3ER signs on SB14 and SB22. Show Pedestrian Signal Face 16-Inch on SB3 and SB14.
66	Show R10-3EL sign on SB401

Plan Sheets

The following 8½ x 11-inch sheets are attached and made part of the plans for this proposal:
Revised: 57 and 66.

The responsibility for notifying potential subcontractors and suppliers of these changes remains with the prime contractor.

Sincerely,

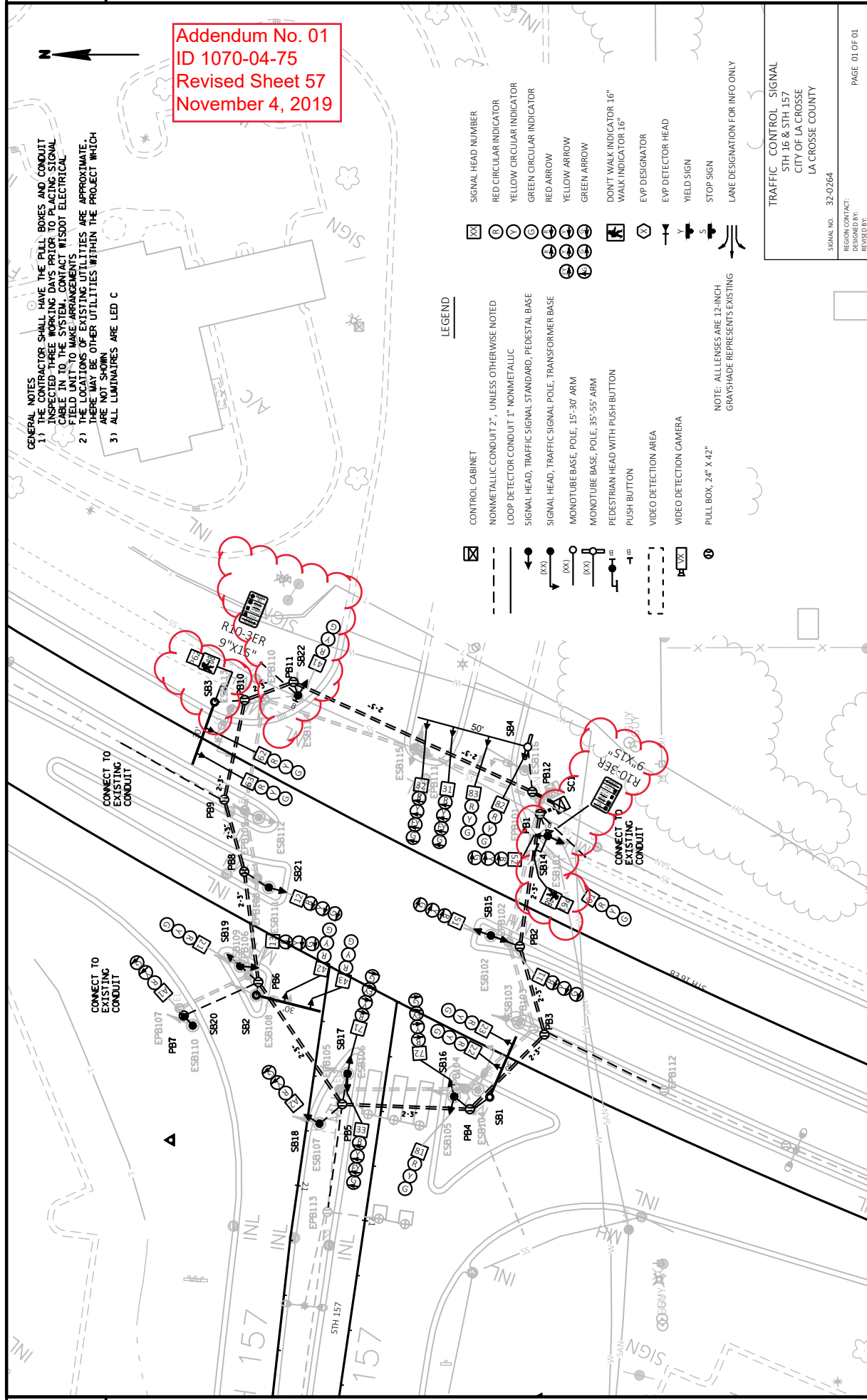
Mike Coleman

Proposal Development Specialist
Proposal Management Section

END OF ADDENDUM

Addendum No. 01
ID 1070-04-75
Revised Sheet 57
November 4, 2019

GENERAL NOTES
1) THE CONTRACTOR SHALL HAVE THE PULL BOXES AND CONDUIT INSPECTED THREE WORKING DAYS PRIOR TO PLACING SIGNAL FIELD IN TO THE SYSTEM. CONTACT WISDOT ELECTRICAL FOR MORE INFORMATION.
2) THE LOCATIONS OF EXISTING UTILITIES ARE APPROXIMATE. THERE MAY BE OTHER UTILITIES WITHIN THE PROJECT WHICH ARE NOT SHOWN.
3) ALL LUMINAIRES ARE LED C.

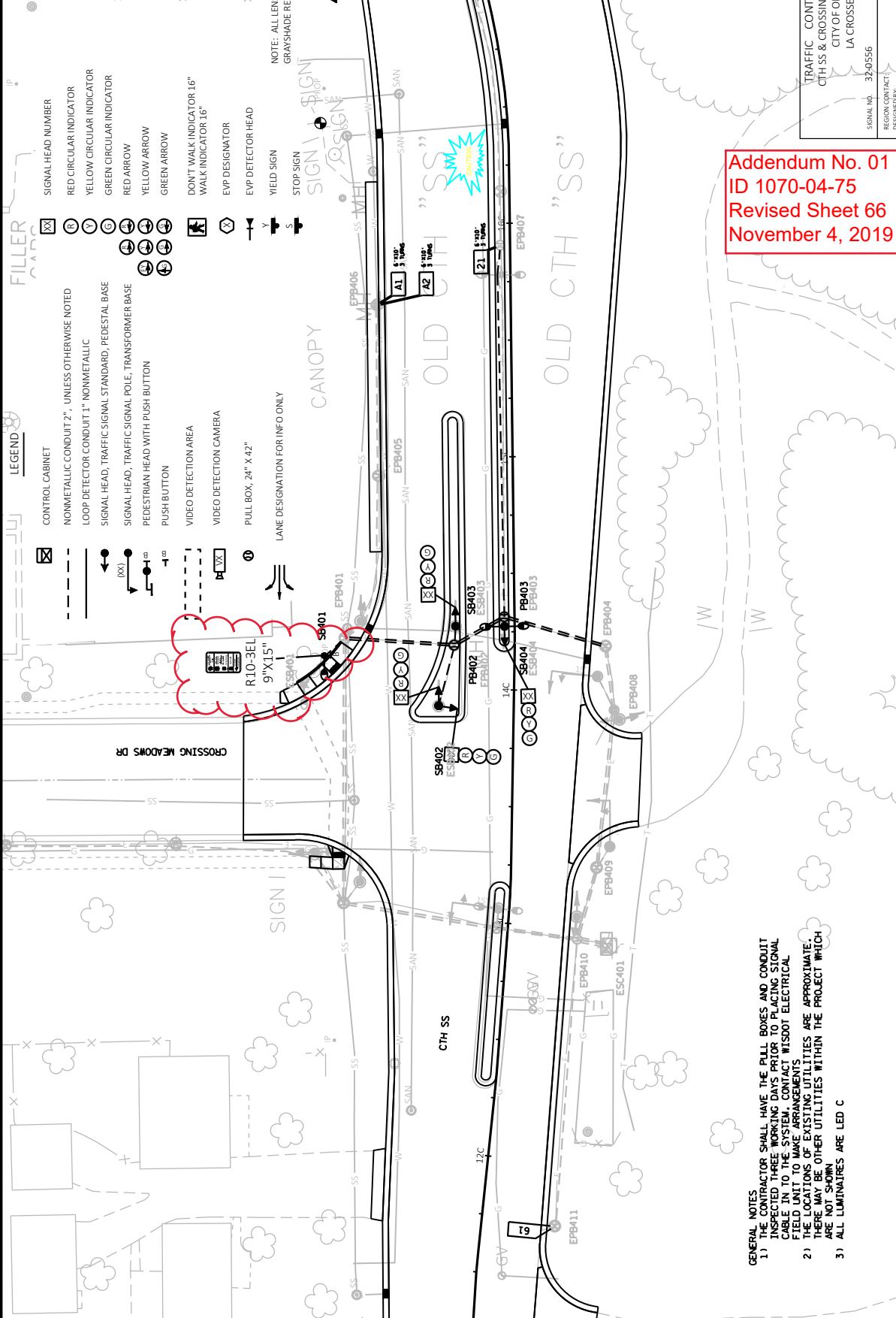


LEGEND

- CONTROL CABINET
 - NONMETALLIC CONDUIT 2"
 - LOOP DETECTOR CONDUIT 1" NONMETALLIC
 - SIGNAL HEAD, TRAFFIC SIGNAL STANDARD, PEDESTAL BASE
 - SIGNAL HEAD, TRAFFIC SIGNAL POLE, TRANSFORMER BASE
 - MONOTUBE BASE, POLE, 15'-30' ARM
 - MONOTUBE BASE, POLE, 35'-55' ARM
 - PEDESTRIAN HEAD WITH PUSH BUTTON
 - PUSH BUTTON
 - VIDEO DETECTION AREA
 - VIDEO DETECTION CAMERA
 - PULL BOX, 24" X 42"
 - NOTE: ALL LENSES ARE 12-INCH GRAYSHADE REPRESENTS EXISTING
- SIGNAL HEAD NUMBER
 - RED CIRCULAR INDICATOR
 - YELLOW CIRCULAR INDICATOR
 - GREEN CIRCULAR INDICATOR
 - RED ARROW
 - YELLOW ARROW
 - GREEN ARROW
 - DON'T WALK INDICATOR 16"
 - WALK INDICATOR 16"
 - EVP DESIGNATOR
 - EVP DETECTOR HEAD
 - YIELD SIGN
 - STOP SIGN
 - LANE DESIGNATION FOR INFO ONLY

TRAFFIC CONTROL SIGNAL
5TH 16 & 5TH 157
CITY OF LA CROSSE
LA CROSSE COUNTY

SIGNAL NO. 32-0264
REGION CONTRACT DESIGNED BY:
REVISED BY:



- LEGEND**
- CONTROL CABINET
 - NONMETALLIC CONDUIT 2" UNLESS OTHERWISE NOTED
 - LOOP DETECTOR CONDUIT 1" NONMETALLIC
 - SIGNAL HEAD, TRAFFIC SIGNAL STANDARD, PEDESTAL BASE
 - SIGNAL HEAD, TRAFFIC SIGNAL POLE, TRANSFORMER BASE
 - PEDESTRIAN HEAD WITH PUSH BUTTON
 - PUSH BUTTON
 - VIDEO DETECTION AREA
 - VIDEO DETECTION CAMERA
 - PULL BOX, 24" X 42"
 - LANE DESIGNATION FOR INFO ONLY

- SIGNAL HEAD NUMBER
- RED CIRCULAR INDICATOR
- YELLOW CIRCULAR INDICATOR
- GREEN CIRCULAR INDICATOR
- RED ARROW
- YELLOW ARROW
- GREEN ARROW
- DON'T WALK INDICATOR 16"
- WALK INDICATOR 16"
- EVP DESIGNATOR
- EVP DETECTOR HEAD
- YIELD SIGN
- STOP SIGN

NOTE: ALL LENSES ARE 12-INCH
GRAY SHADE REPRESENTS EXISTING

Addendum No. 01
ID 1070-04-75
Revised Sheet 66
November 4, 2019

- GENERAL NOTES**
- 1) THE CONTRACTOR SHALL HAVE THE PULL BOXES AND CONDUIT INSPECTED THREE WORKING DAYS PRIOR TO PLACING SIGNAL CABLE IN TO THE SYSTEM. CONTACT WISDOT ELECTRICAL FIELD UNIT TO MAKE ARRANGEMENTS
 - 2) THE LOCATIONS OF EXISTING UTILITIES ARE APPROXIMATE. THERE MAY BE OTHER UTILITIES WITHIN THE PROJECT WHICH ARE NOT SHOWN
 - 3) ALL LUMINAIRES ARE LED C

TRAFFIC CONTROL SIGNAL
CTH SS & CROSSING MEADOWS DR
CITY OF ONALASKA
LA CROSSE COUNTY

SIGNAL NO. 32-0556
REGION CONTACT
DESIGNED BY:
REVISED BY:

