



Wisconsin Department of Transportation

March 2, 2020

Division of Transportation Systems
Development
Bureau of Project Development
4822 Madison Yards Way, 4th Floor South
Madison, WI 53705

NOTICE TO ALL CONTRACTORS:

Telephone: (608) 266-1631
Facsimile (FAX): (608) 266-8459

Proposal #11: 1360-00-76
West Fond Du Lac Avenue
6 Highway Intersections
STH 145
Milwaukee County

2595-03-73, WISC 2020073
N 60th Street
West Capitol Drive to W Hampton Ave
Local Street
Milwaukee County

Letting of March 10, 2020

This is Addendum No. 02, which provides for the following:

Special Provisions:

Revised Special Provisions	
Article No.	Description
4	Traffic

Plan Sheets:

Revised Plan Sheets	
Plan Sheet	Plan Sheet Title (brief description of changes to sheet)
242	Legend Revision: 8-1/2 INCH REINF. CONC PAV'T to 8.5 - INCH DOWELED CONC PAV'T
244	Legend Revision: 8-1/2 INCH REINF. CONC PAV'T to 8.5 - INCH DOWELED CONC PAV'T
246	Legend Revision: 8-1/2 INCH REINF. CONC PAV'T to 8.5 - INCH DOWELED CONC PAV'T
248	Legend Revision: 8-1/2 INCH REINF. CONC PAV'T to 8.5 - INCH DOWELED CONC PAV'T
250	Legend Revision: 8-1/2 INCH REINF. CONC PAV'T to 8.5 - INCH DOWELED CONC PAV'T
252	Legend Revision: 8-1/2 INCH REINF. CONC PAV'T to 8.5 - INCH DOWELED CONC PAV'T
254	Legend Revision: 8-1/2 INCH REINF. CONC PAV'T to 8.5 - INCH DOWELED CONC PAV'T
256	Legend Revision: 8-1/2 INCH REINF. CONC PAV'T to 8.5 - INCH DOWELED CONC PAV'T
258	DELETE INCORRECT GRADE 82.17 AT STATION 58+25 ON T/L LINE
258	Legend Revision: 8-1/2 INCH REINF. CONC PAV'T to 8.5 - INCH DOWELED CONC PAV'T
260	Legend Revision: 8-1/2 INCH REINF. CONC PAV'T to 8.5 - INCH DOWELED CONC PAV'T

The responsibility for notifying potential subcontractors and suppliers of these changes remains with the prime contractor.

Sincerely,

Mike Coleman

Proposal Development Specialist
Proposal Management Section

ADDENDUM NO. 02
1360-00-76 & 2595-03-73
March 2, 2020

Special Provisions

4. Traffic

Replace paragraph two with the following:

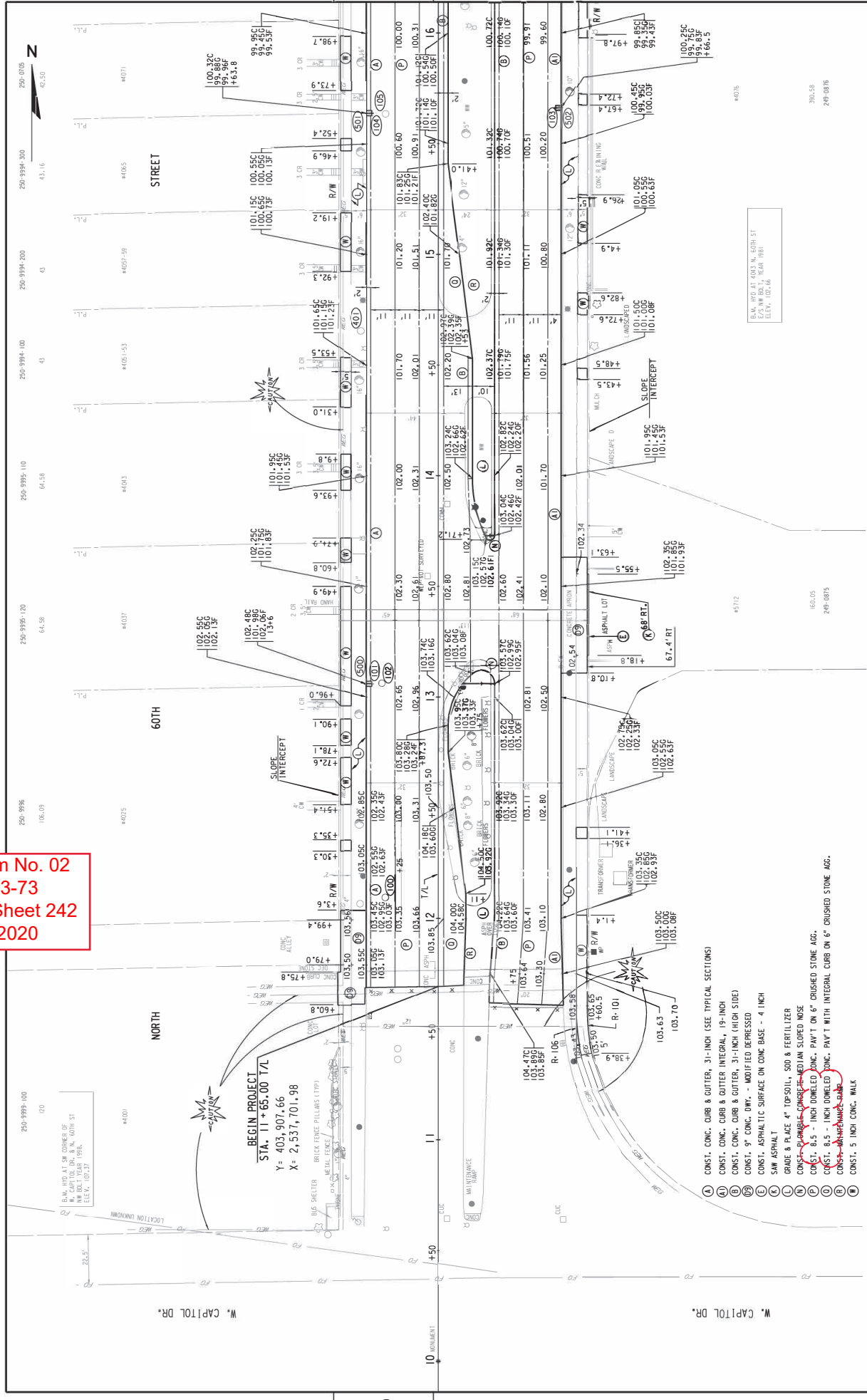
The City of Milwaukee will provide all posting of parking restrictions to facilitate construction operations. Contact Mr. Cameron Potter, (414) 286-3276, at least three working days prior to the start of construction operations.

Plan Sheets

The following 8½ x 11-inch sheets are attached and made part of the plans for this proposal:
Revised: 242, 244, 246, 248, 250, 252, 254, 256, 258, 260

END OF ADDENDUM

Addendum No. 02
 ID 2595-03-73
 Revised Sheet 242
 March 2, 2020



STATE PROJECT NUMBER 2595-03-73

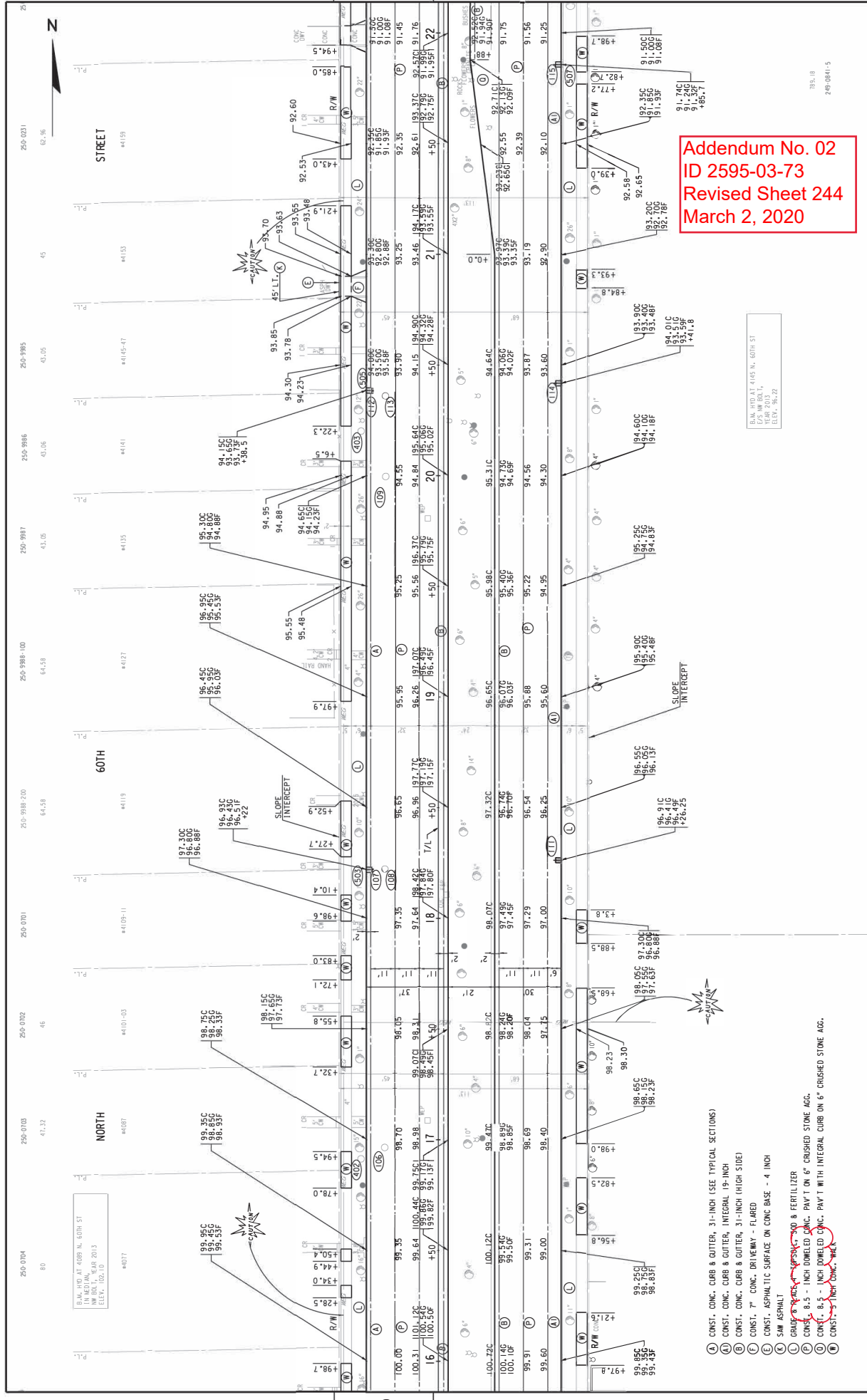
HWY: LOCAL STREET COUNTY: MILWAUKEE PLAN

SCALE FEET 0' 40'

SHEET NO: 242

REVISIONS:

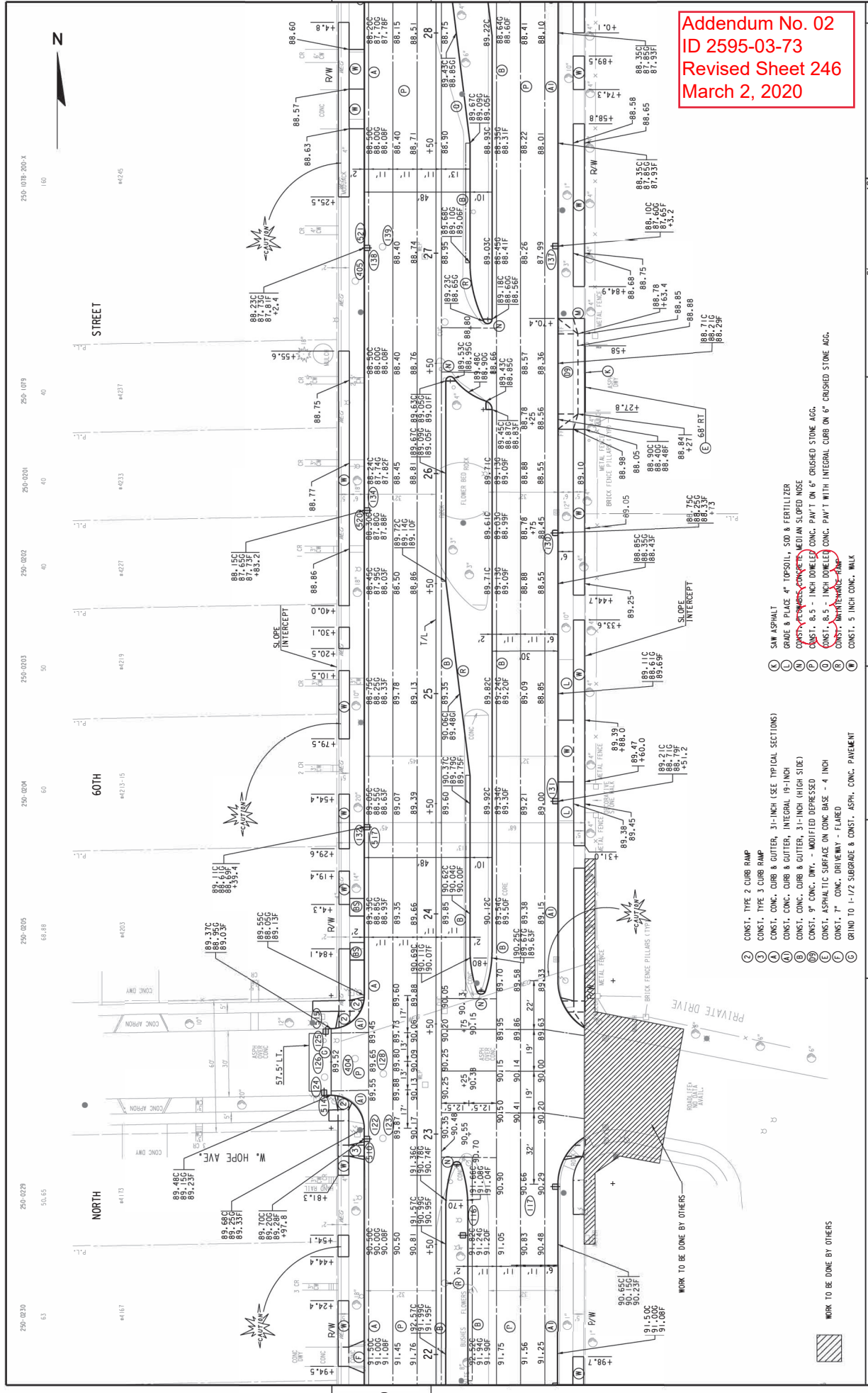
- 1. 03.15.00
- 2. 03.15.00
- 3. 03.15.00
- 4. 03.15.00
- 5. 03.15.00
- 6. 03.15.00
- 7. 03.15.00
- 8. 03.15.00
- 9. 03.15.00
- 10. 03.15.00
- 11. 03.15.00
- 12. 03.15.00
- 13. 03.15.00
- 14. 03.15.00
- 15. 03.15.00
- 16. 03.15.00
- 17. 03.15.00
- 18. 03.15.00
- 19. 03.15.00
- 20. 03.15.00
- 21. 03.15.00
- 22. 03.15.00
- 23. 03.15.00
- 24. 03.15.00
- 25. 03.15.00
- 26. 03.15.00
- 27. 03.15.00
- 28. 03.15.00
- 29. 03.15.00
- 30. 03.15.00
- 31. 03.15.00
- 32. 03.15.00
- 33. 03.15.00
- 34. 03.15.00
- 35. 03.15.00
- 36. 03.15.00
- 37. 03.15.00
- 38. 03.15.00
- 39. 03.15.00
- 40. 03.15.00
- 41. 03.15.00
- 42. 03.15.00
- 43. 03.15.00
- 44. 03.15.00
- 45. 03.15.00
- 46. 03.15.00
- 47. 03.15.00
- 48. 03.15.00
- 49. 03.15.00
- 50. 03.15.00
- 51. 03.15.00
- 52. 03.15.00
- 53. 03.15.00
- 54. 03.15.00
- 55. 03.15.00
- 56. 03.15.00
- 57. 03.15.00
- 58. 03.15.00
- 59. 03.15.00
- 60. 03.15.00
- 61. 03.15.00
- 62. 03.15.00
- 63. 03.15.00
- 64. 03.15.00
- 65. 03.15.00
- 66. 03.15.00
- 67. 03.15.00
- 68. 03.15.00
- 69. 03.15.00
- 70. 03.15.00
- 71. 03.15.00
- 72. 03.15.00
- 73. 03.15.00
- 74. 03.15.00
- 75. 03.15.00
- 76. 03.15.00
- 77. 03.15.00
- 78. 03.15.00
- 79. 03.15.00
- 80. 03.15.00
- 81. 03.15.00
- 82. 03.15.00
- 83. 03.15.00
- 84. 03.15.00
- 85. 03.15.00
- 86. 03.15.00
- 87. 03.15.00
- 88. 03.15.00
- 89. 03.15.00
- 90. 03.15.00
- 91. 03.15.00
- 92. 03.15.00
- 93. 03.15.00
- 94. 03.15.00
- 95. 03.15.00
- 96. 03.15.00
- 97. 03.15.00
- 98. 03.15.00
- 99. 03.15.00
- 100. 03.15.00



Addendum No. 02
 ID 2595-03-73
 Revised Sheet 244
 March 2, 2020

B.M. HD 4145 N. 60TH ST
 C.P. W. END T.
 ELEV. 96.72

- (A) CONST. CONC. CURB & GUTTER, 31-INCH (SEE TYPICAL SECTIONS)
- (B) CONST. CONC. CURB & GUTTER, INTEGRAL 19-INCH
- (C) CONST. CONC. CURB & GUTTER, 31-INCH (HIGH SIDE)
- (D) CONST. 7" CONC. DRIVEWAY - FLARED
- (E) CONST. ASPHALTIC SURFACE ON CONC. BASE - 4 INCH
- (F) SAND ASPHALT
- (G) GROUP 3 GRANULAR FILL & FERTILIZER
- (H) CONST. 8.5 - INCH DOMELED CONC. PAV'T ON 6" CRUSHED STONE AGG.
- (I) CONST. 8.5 - INCH DOMELED CONC. PAV'T WITH INTEGRAL CURB ON 6" CRUSHED STONE AGG.
- (J) CONST. 11" CONC. CURB



Addendum No. 02
ID 2595-03-73
Revised Sheet 246
March 2, 2020

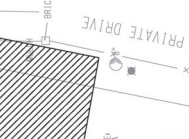
STATE PROJECT NUMBER **2595-03-73** COUNTY: **MILWAUKEE** PLAN **SCALE FEET 1" = 40'** SHEET NO: **246**

FILENAME: W:\SPR\60TH CAPITOL TO HAMPTON\DESIGN\28.28.DGN REVISED DATE: 02-27-2020 BY: JC

- (A) CONST. TYPE 2 CURB RAMP
- (B) CONST. TYPE 3 CURB RAMP
- (C) CONST. CONC. CURB & GUTTER, 31-INCH (SEE TYPICAL SECTIONS)
- (D) CONST. CONC. CURB & GUTTER, INTEGRAL 19-INCH
- (E) CONST. CONC. CURB & GUTTER, 31-INCH (HIGH SIDE)
- (F) CONST. 9" CONC. D.W.Y. - MODIFIED DERESSED
- (G) CONST. ASPHALTIC SURFACE ON CONC. BASE - 4 INCH
- (H) CONST. 7" CONC. DRIVEWAY - FLARE
- (I) GRIND TO 1-1/2 SUBGRADE & CONST. ASPH. CONC. PAVEMENT
- (J) SAW ASPHALT
- (K) GRADE & PLACE 4" TOPSOIL, SOD & FERTILIZER
- (L) CONST. CONC. CONCRETE MEDIAN SLOPED NOSE
- (M) CONST. 8.5 - INCH DOWELED CONC. PAV'T ON 6" CRUSHED STONE AGG.
- (N) CONST. 8.5 - INCH DOWELED CONC. PAV'T WITH INTEGRAL CURB ON 6" CRUSHED STONE AGG.
- (O) CONST. 5 INCH CONC. WALK

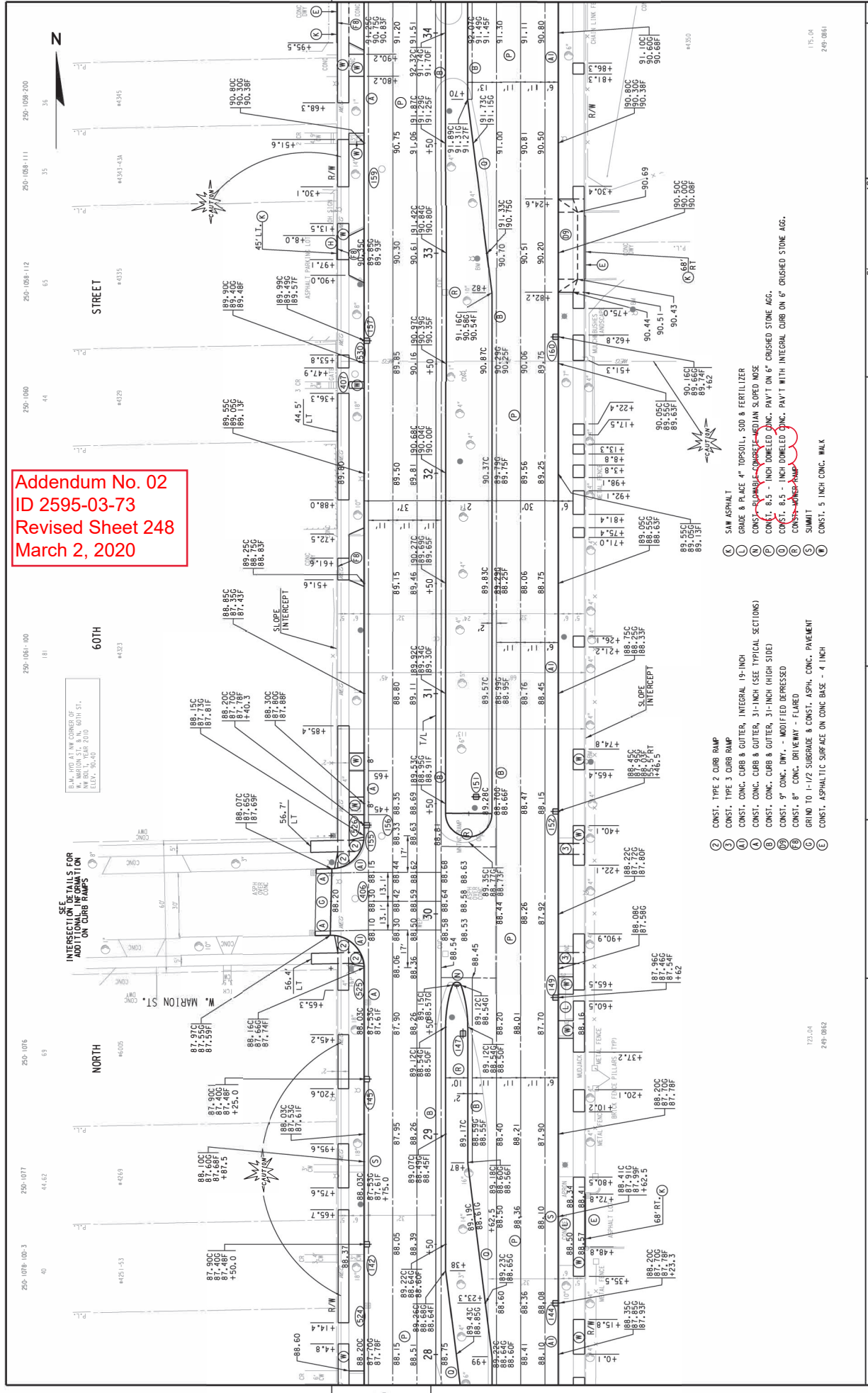
WORK TO BE DONE BY OTHERS

WORK TO BE DONE BY OTHERS



WORK TO BE DONE BY OTHERS

Addendum No. 02
ID 2595-03-73
Revised Sheet 248
March 2, 2020

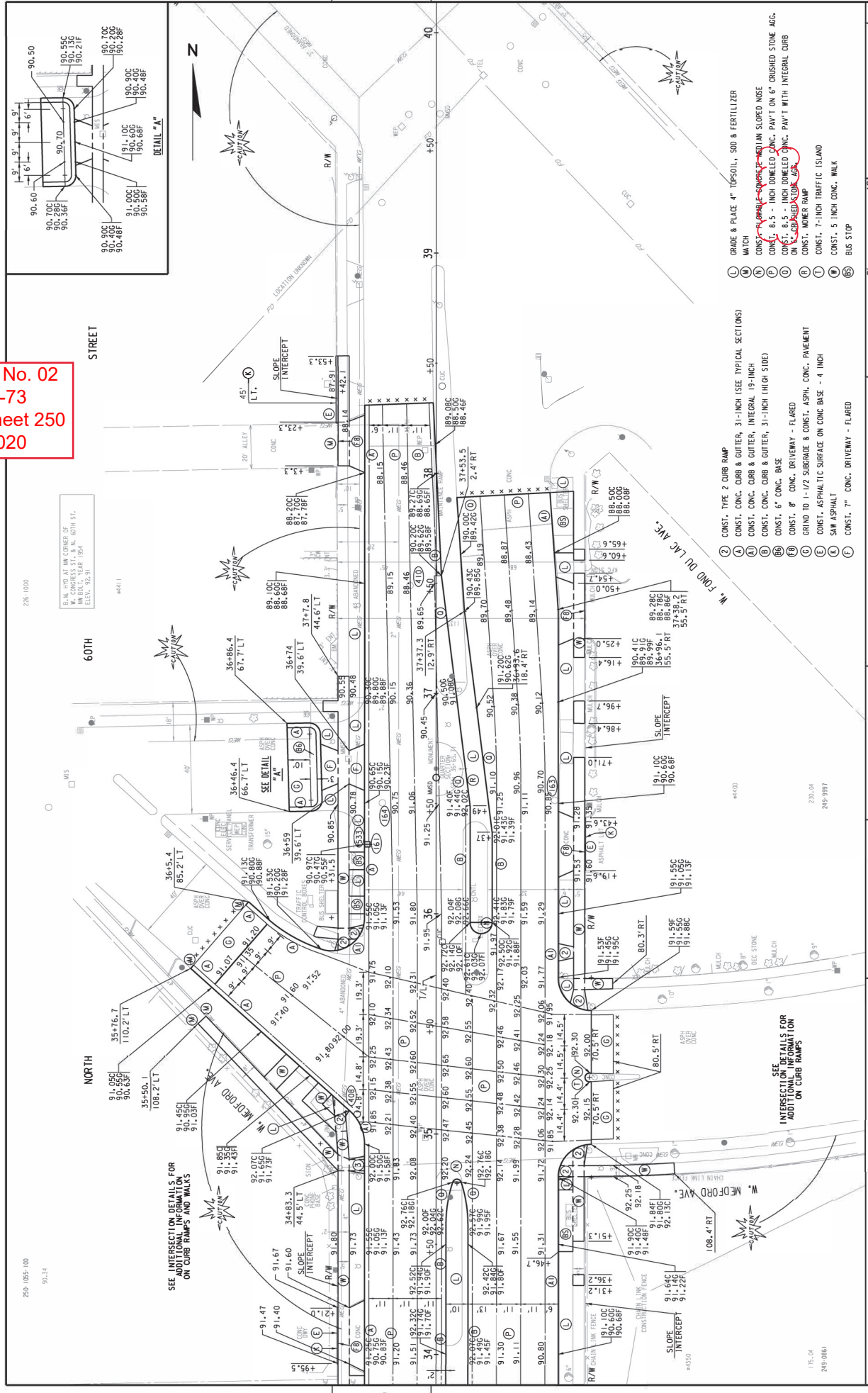


SEE
**INTERSECTION DETAILS FOR
 ADDITIONAL INFORMATION
 ON CURB RAMPS**

PLAN, INFO. AT THE CORNER OF
 W. MARION ST. & N. 60TH ST.,
 EAST, 2019.

- (K) SAW ASPHALT
- (L) GRADE & PLACE 4" TOPSOIL, SOD & FERTILIZER
- (M) CONSTRUCTION - CONCRETE-MEDIUM SLOPED SIDE
- (N) CONC. 8.5 - INCH DOMELED CONC. PAVT ON 6" CRUSHED STONE AGG.
- (O) CONC. 8.5 - INCH DOMELED CONC. PAVT WITH INTEGRAL CURB ON 6" CRUSHED STONE AGG.
- (P) CONSTRUCTION - ASPHALT
- (Q) SUMMIT
- (R) CONST. 5 INCH CONC. WALK
- (S) CONST. TYPE 2 CURB RAMP
- (T) CONST. TYPE 3 CURB RAMP
- (U) CONST. CONC. CURB & GUTTER, INTEGRAL 19-INCH
- (V) CONST. CONC. CURB & GUTTER, 31-INCH (SEE TYPICAL SECTIONS)
- (W) CONST. CONC. CURB & GUTTER, 31-INCH (HIGH SIDE)
- (X) CONST. 9" CONC. DWT. - MODIFIED DERESSED
- (Y) CONST. 8" CONC. DRIVEWAY - FLARED
- (Z) GRIND TO 1-1/2 SUBGRADE & CONST. ASPH. CONC. PAVEMENT
- (AA) CONST. ASPHALTIC SURFACE ON CONC. BASE - 4 INCH

Addendum No. 02
 ID 2595-03-73
 Revised Sheet 250
 March 2, 2020



250-1000

1/4" = 1'0" AS SHOWN
 NW CORNER OF
 N. 60TH ST.
 ELEV. 92.91

STREET

60TH

NORTH

250-1005-100

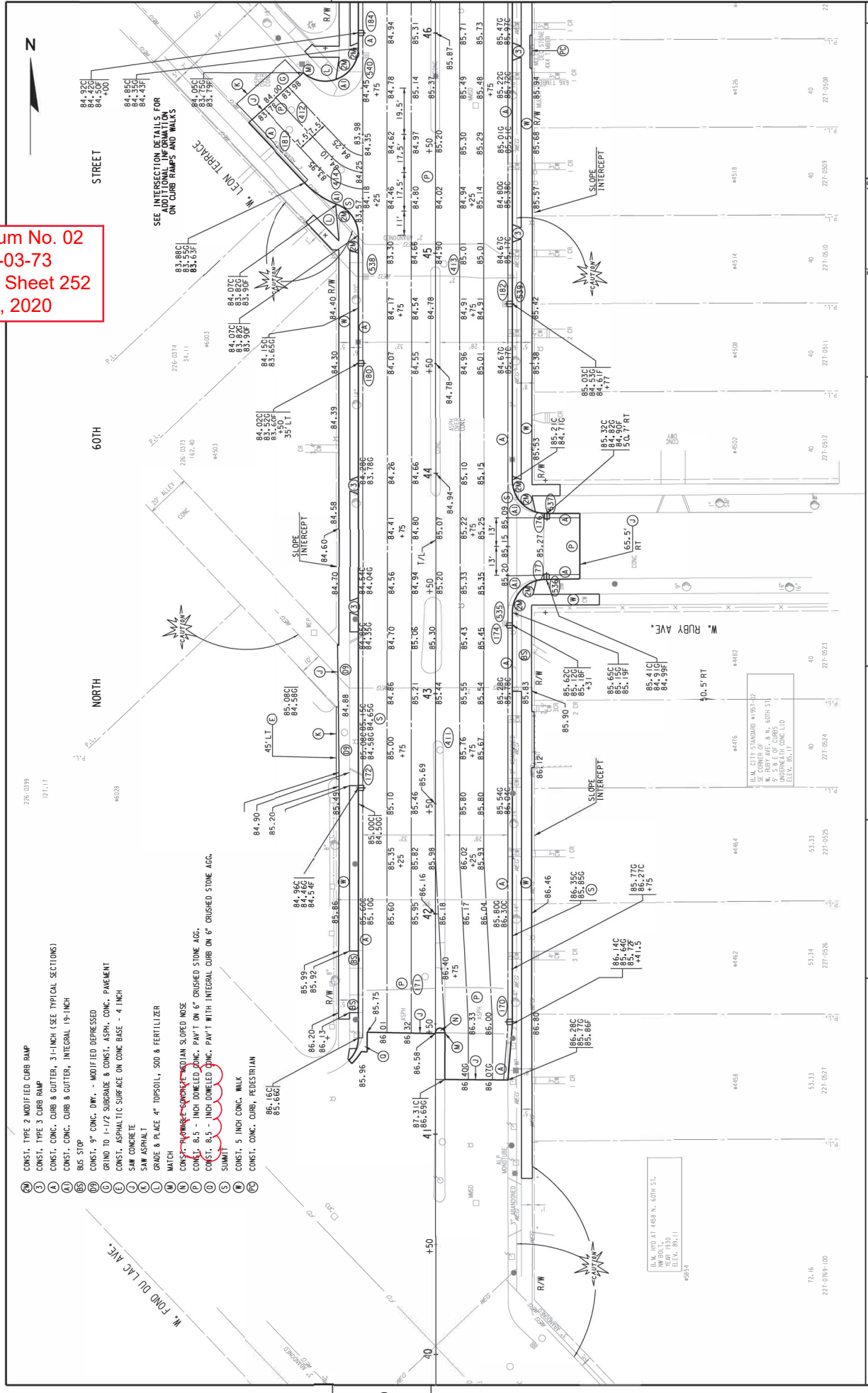
90.34

SEE INTERSECTION DETAILS FOR
 ADDITIONAL INFORMATION
 ON CURB RAMPS AND WALKS

SEE
 INTERSECTION DETAILS FOR
 ADDITIONAL INFORMATION
 ON CURB RAMPS

- (L) GRADE & PLACE 4" TOPSOIL, SOD & FERTILIZER MATCH
- (M) CONST. CONC. CURB & GUTTER, 3-1/2" (SEE TYPICAL SECTIONS)
- (A) CONST. CONC. CURB & GUTTER, INTEGRAL 19-INCH
- (U) CONST. CONC. CURB & GUTTER, 3-1/2" (HIGH SIDE)
- (BB) CONST. 6" CONC. BASE
- (BB) CONST. 8" CONC. DRIVEWAY - FLARED
- (E) GRIND TO 1-1/2" SUBGRADE & CONST. ASPH. CONC. PAVEMENT
- (C) CONST. ASPHALTIC SURFACE ON CONC. BASE - 4 INCH SAW ASPHALT
- (F) CONST. 7" CONC. DRIVEWAY - FLARED
- (Z) CONST. TYPE 2 CURB RAMP
- (P) CONST. 8.5 - INCH DOMELED CONC. PAV'T ON 6" CRUSHED STONE AGG. ON 4" GRADED STONE AGG.
- (O) CONST. 8.5 - INCH DOMELED CONC. PAV'T WITH INTEGRAL CURB ON 4" GRADED STONE AGG.
- (R) CONST. MONER RAMP
- (T) CONST. 7-INCH TRAFFIC ISLAND
- (S) CONST. 5 INCH CONC. WALK
- (BS) BUS STOP

Addendum No. 02
 ID 2595-03-73
 Revised Sheet 252
 March 2, 2020



- (A) CONST. TYPE 2 MODIFIED CURB RAMP
- (B) CONST. TYPE 3 CURB RAMP
- (C) CONST. CONC. CURB & CUTTER, 3 1/2" INCH (SEE TYPICAL SECTIONS)
- (D) CONST. CONC. CURB & CUTTER, INTEGRAL 19" INCH
- (E) BUS STOP
- (F) CONST. 9" CONC. D.W.K. - MODIFIED DEPRESSED
- (G) GRIND TO 1/2" SUBGRADE & CONST. ASPH. CONC. PAVEMENT
- (H) CONST. ASPHALTIC SURFACE ON CONC. BASE - 4" INCH
- (I) SAW CONCRETE
- (J) SAW ASPHALT
- (K) GRADE & PLACE 4" TOPSOIL, SOD & FERTILIZER
- (L) MATCH
- (M) CONST. CONC. CURB ON SLOPED NOSE
- (N) CONST. 8.5" INCH DOWELED CONC. PAV'T ON 6" CRUSHED STONE AGG.
- (O) CONST. 8.5" INCH DOWELED CONC. PAV'T WITH INTEGRAL CURB ON 6" CRUSHED STONE AGG.
- (P) SUMMIT
- (Q) CONST. 5 INCH CONC. WALK
- (R) CONST. CONC. CURB, PEDESTRIAN

256-0226

256-0228

256-0229

256-0227

256-0225

256-0223

256-0224

256-0222

256-0221

256-0220

256-0219

256-0218

256-0217

256-0216

256-0215

256-0214

256-0213

256-0212

40

50

60

70

80

90

100

110

120

130

140

150

160

170

180

190

200

210

220

230

240

250

260

270

280

290

300

310

320

330

340

350

360

370

380

390

400

410

420

430

440

450

460

470

480

490

500

510

520

530

540

550

560

570

580

590

600

610

620

630

640

650

660

670

680

690

700

710

720

730

740

750

760

770

780

790

800

810

820

830

840

850

860

870

880

890

900

910

920

930

940

950

960

970

980

990

1000

1010

1020

1030

1040

1050

1060

1070

1080

1090

1100

1110

1120

1130

1140

1150

1160

1170

1180

1190

1200

1210

1220

1230

1240

1250

1260

1270

1280

1290

1300

1310

1320

1330

1340

1350

1360

1370

1380

1390

1400

1410

1420

1430

1440

1450

1460

1470

1480

1490

1500

1510

1520

1530

1540

1550

1560

1570

1580

1590

1600

1610

1620

1630

1640

1650

1660

1670

1680

1690

1700

1710

1720

1730

1740

1750

1760

1770

1780

1790

1800

1810

1820

1830

1840

1850

1860

1870

1880

1890

1900

1910

1920

1930

1940

1950

1960

1970

1980

1990

2000

2010

2020

2030

2040

2050

2060

2070

2080

2090

2100

2110

2120

2130

2140

2150

2160

2170

2180

2190

2200

2210

2220

2230

2240

2250

2260

2270

2280

2290

2300

2310

2320

2330

2340

2350

2360

2370

2380

2390

2400

2410

2420

2430

2440

2450

2460

2470

2480

2490

2500

2510

2520

2530

2540

2550

2560

2570

2580

2590

2600

2610

2620

2630

2640

2650

2660

2670

2680

2690

2700

2710

2720

2730

2740

2750

2760

2770

2780

2790

2800

2810

2820

2830

2840

2850

2860

2870

2880

2890

2900

2910

2920

2930

2940

2950

2960

2970

2980

2990

3000

3010

3020

3030

3040

3050

3060

3070

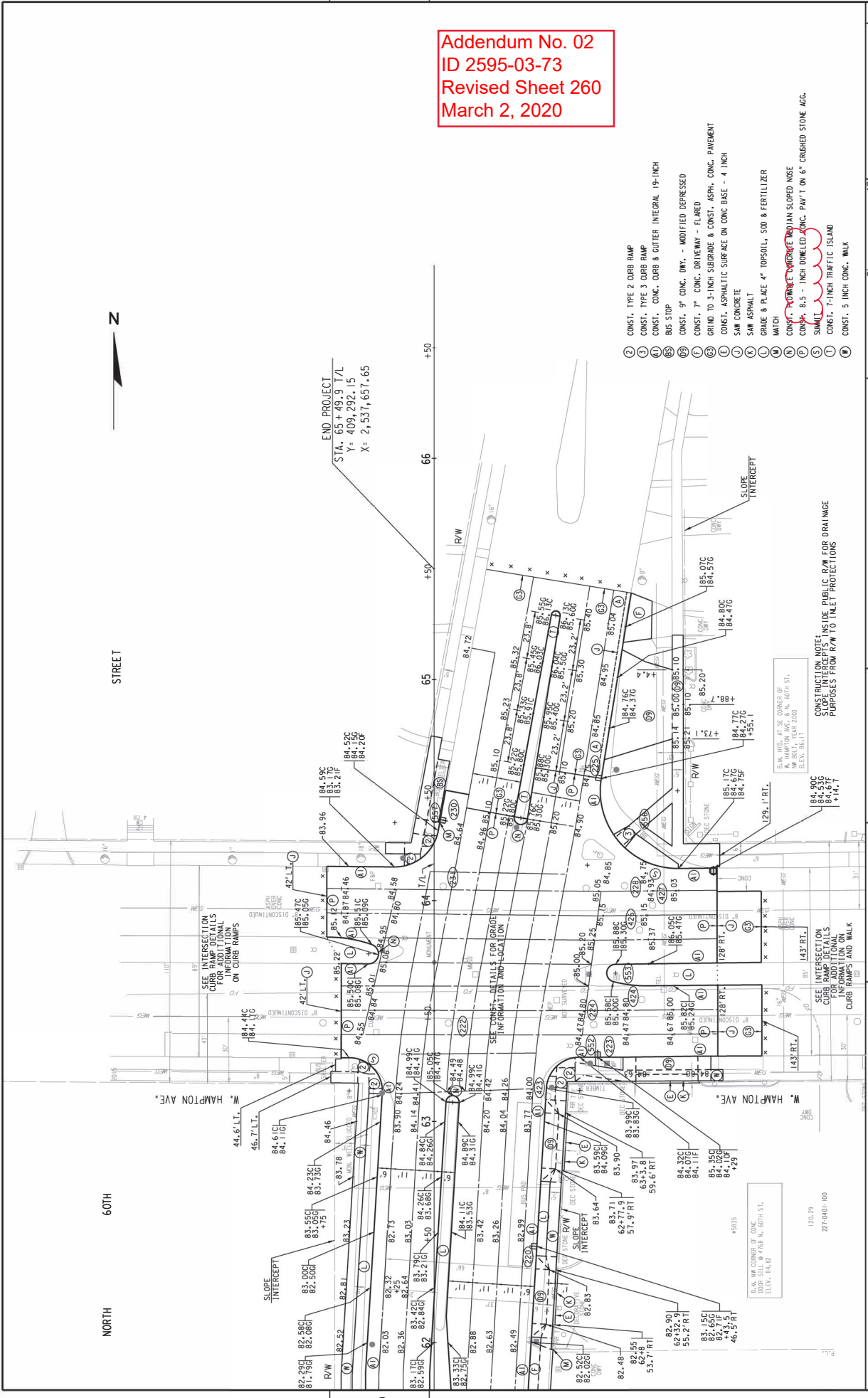
3080

3090

3100

3110

Addendum No. 02
 ID 2595-03-73
 Revised Sheet 260
 March 2, 2020



END PROJECT
 STA. 65 + 49.9 T/L
 Y = 409,292.15
 X = 2,537,657.65

- (Z) CONST. TYPE 2 CURB RAMP
- (3) CONST. TYPE 3 CURB RAMP
- (A) CONST. CONC. CURB & CUTTER INTEGRAL 19-INCH
- (B) BUS STOP
- (C) CONST. 9" CONC. DTY. - MODIFIED DEPRESSED
- (L) CONST. 7" CONC. DRIVEWAY - FLARED
- (E) GRIND TO 3-INCH SUBGRADE & CONST. ASPH. CONC. PAVEMENT
- (J) CONST. ASPHALTIC SURFACE ON CONC. BASE - 4 INCH SAW CONCRETE
- (K) SAW ASPHALT
- (G) GRADE & PLACE 4" TOPSOIL, SOD & FERTILIZER
- (M) MACH
- (N) CONST. 8.5 - 10 INCH CONCRETE MEDIAN SLOPED NOSE
- (P) CONST. 8.5 - 10 INCH DOMELED CONC. PAW/T ON 6" CRUSHED STONE AGG.
- (S) SMALL
- (T) CONST. 7-INCH TRAFFIC ISLAND
- (4) CONST. 5 INCH CONC. WALK

S.M. INFO. AT SE CORNER OF
 DOWD ST. @ 418 N. 60TH ST.
 NW 1/4, YEAR 2020
 ELEV. 84.17

CONSTRUCTION NOTE:
 SLOPE INTERCEPTS INSIDE PUBLIC R/W FOR DRAINAGE
 PURPOSES FROM R/W TO INLET PROTECTIONS
 +14.7