



Wisconsin Department of Transportation

May 26, 2020

Division of Transportation Systems Development

Bureau of Project Development
4822 Madison Yards Way, 4th Floor South
Madison, WI 53705

Telephone: (608) 266-1631
Facsimile (FAX): (608) 266-8459

NOTICE TO ALL CONTRACTORS:

**Proposal #03: 1640-04-60, WISC 2020 331
Westby - Readstown
Rusk Avenue to Kickapoo River
USH 14
Vernon County**

Letting of June 9, 2020

This is Addendum No. 01, which provides for the following:

Schedule of Items:

Revised Bid Item Quantities					
Bid Item	Item Description	Unit	Old Quantity	Revised Quantity	Proposal Total
649.0105	Temporary Marking Line Paint 4-Inch	LF	5,000	21,040	26,040

Plan Sheets:

Revised Plan Sheets	
Plan Sheet	Plan Sheet Title (brief description of changes to sheet)
40-57	Pavement Marking (Note updated to reflect where temporary paint to be placed)
60	Miscellaneous Quantities (Temporary Paint 4-Inch quantity updated)

Schedule of Items

Attached, dated May 26, 2020, are the revised Schedule of Items Page 3.

Plan Sheets

The following 8½ x 11-inch sheets are attached and made part of the plans for this proposal:
Revised: 40 – 57 and 60

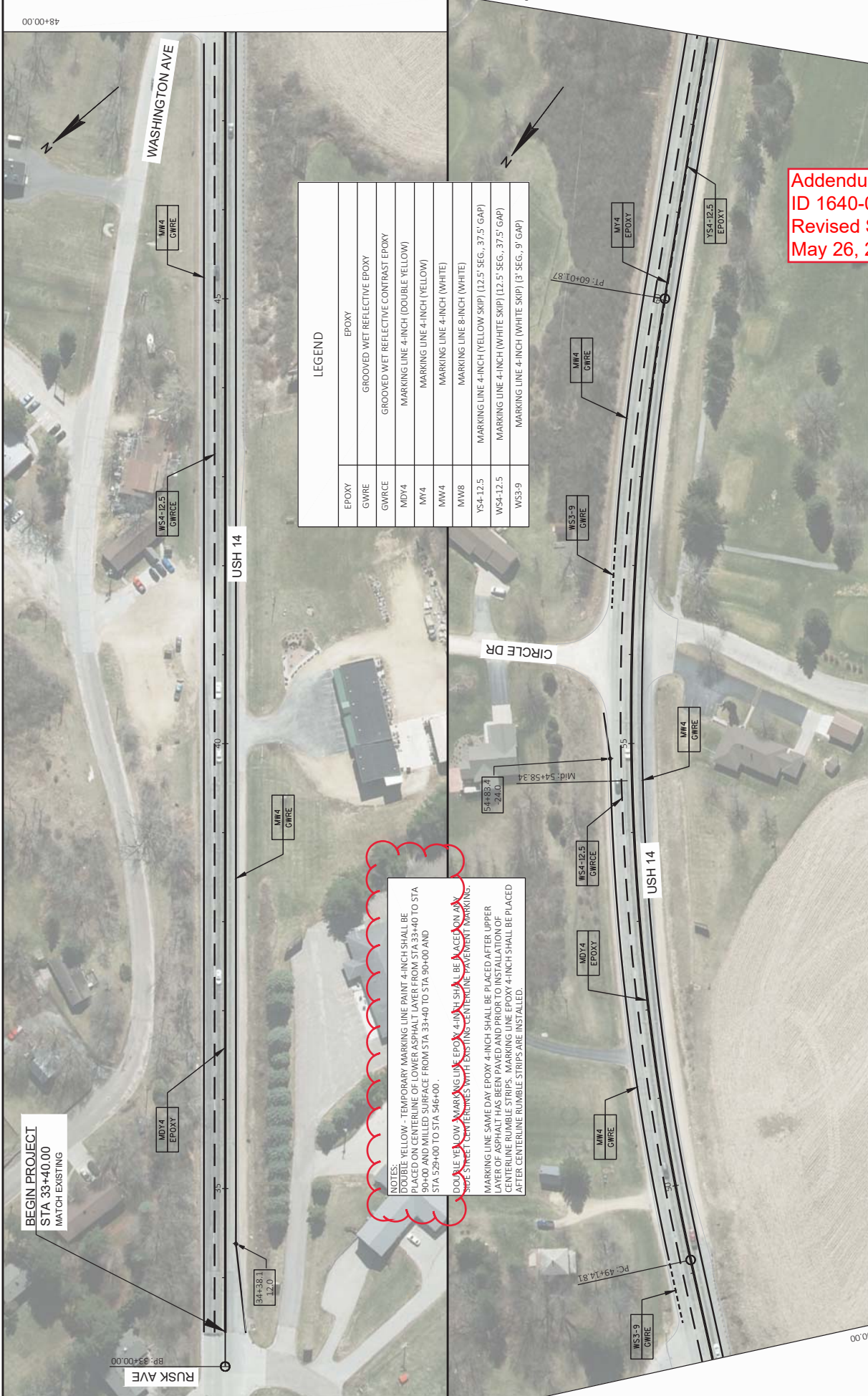
The responsibility for notifying potential subcontractors and suppliers of these changes remains with the prime contractor.

Sincerely,

Mike Coleman

Proposal Development Specialist
Proposal Management Section

END OF ADDENDUM

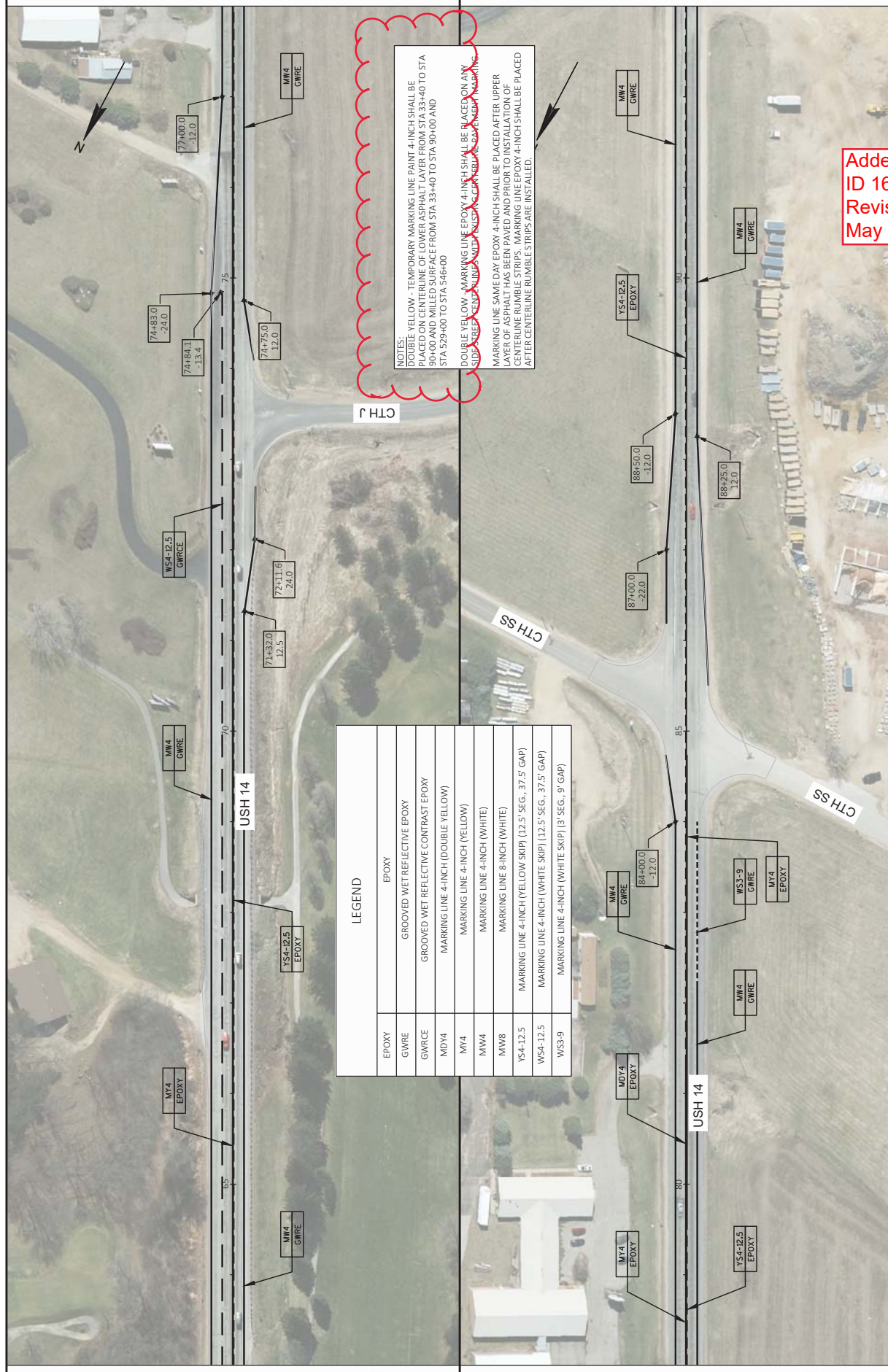


BEGIN PROJECT
STA 33+40.00
MATCH EXISTING

LEGEND	
EPOXY	EPOXY
GWRE	GROOVED WET REFLECTIVE EPOXY
GWRCE	GROOVED WET REFLECTIVE CONTRAST EPOXY
MDY4	MARKING LINE 4-INCH (DOUBLE YELLOW)
MW4	MARKING LINE 4-INCH (YELLOW)
MW4	MARKING LINE 4-INCH (WHITE)
MW8	MARKING LINE 8-INCH (WHITE)
YS4-12.5	MARKING LINE 4-INCH (YELLOW SKIP) (12.5' SEG., 37.5' GAP)
WS4-12.5	MARKING LINE 4-INCH (WHITE SKIP) (12.5' SEG., 37.5' GAP)
WS3-9	MARKING LINE 4-INCH (WHITE SKIP) (3' SEG., 9' GAP)

NOTES:
DOUBLE YELLOW - TEMPORARY MARKING LINE PAINT 4-INCH SHALL BE PLACED ON CENTERLINE OF LOWER ASPHALT LAYER FROM STA 33+40 TO STA 34+00 AND WIDENED SURFACE FROM STA 33+40 TO STA 36+00 AND STA 32+00 TO STA 34+00.
DOUBLE YELLOW MARKING LINE EPOXY 4-INCH SHALL BE PLACED ON UPPER LAYER OF ASPHALT AFTER THE CENTERLINE PAVEMENT MARKINGS.
MARKING LINE SAME DAY EPOXY 4-INCH SHALL BE PLACED AFTER UPPER LAYER OF ASPHALT HAS BEEN PAVED AND PRIOR TO INSTALLATION OF CENTERLINE RUMBLE STRIPS. MARKING LINE EPOXY 4-INCH SHALL BE PLACED AFTER CENTERLINE RUMBLE STRIPS ARE INSTALLED.

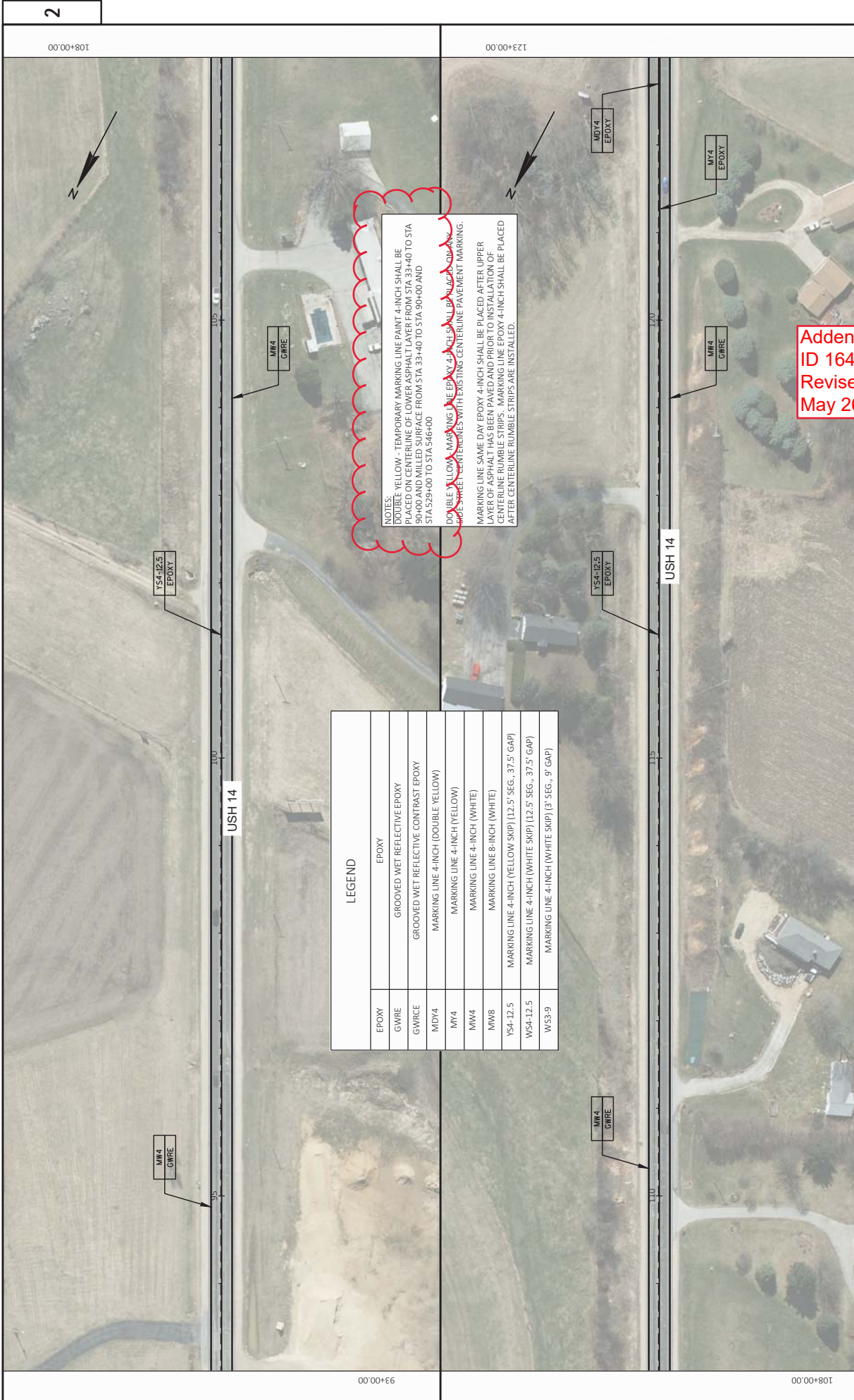
Addendum No. 01
ID 1640-04-60
Revised Sheet 40
May 26, 2020



NOTES:
 DOUBLE YELLOW - TEMPORARY MARKING LINE PAINT 4-INCH SHALL BE PLACED ON CENTERLINE OF LOWER ASPHALT LAYER FROM STA 33+40 TO STA 90+00 AND MILLED SURFACE FROM STA 33+40 TO STA 90+00 AND STA 529+00 TO STA 546+00
 DOUBLE YELLOW - MARKING LINE 4-INCH SHALL BE PLACED ON ANY SURFACE WITHIN 10' OF CENTERLINE
 MARKING LINE SAME DAY EPOXY 4-INCH SHALL BE PLACED AFTER UPPER ASPHALT LAYER IS PLACED
 CENTERLINE RUMBLE STRIP MARKING LINE EPOXY 4-INCH SHALL BE PLACED AFTER CENTERLINE RUMBLE STRIPS ARE INSTALLED.

LEGEND	
EPOXY	EPOXY
GWRE	GROOVED WET REFLECTIVE EPOXY
GWRC	GROOVED WET REFLECTIVE CONTRAST EPOXY
MDY4	MARKING LINE 4-INCH (DOUBLE YELLOW)
MY4	MARKING LINE 4-INCH (YELLOW)
MW4	MARKING LINE 4-INCH (WHITE)
MW8	MARKING LINE 8-INCH (WHITE)
YS4-12.5	MARKING LINE 4-INCH (YELLOW SKIP) (12.5' SEG., 37.5' GAP)
WS4-12.5	MARKING LINE 4-INCH (WHITE SKIP) (12.5' SEG., 37.5' GAP)
WS3-9	MARKING LINE 4-INCH (WHITE SKIP) (3' SEG., 9' GAP)

Addendum No. 01
 ID 1640-04-60
 Revised Sheet 41
 May 26, 2020

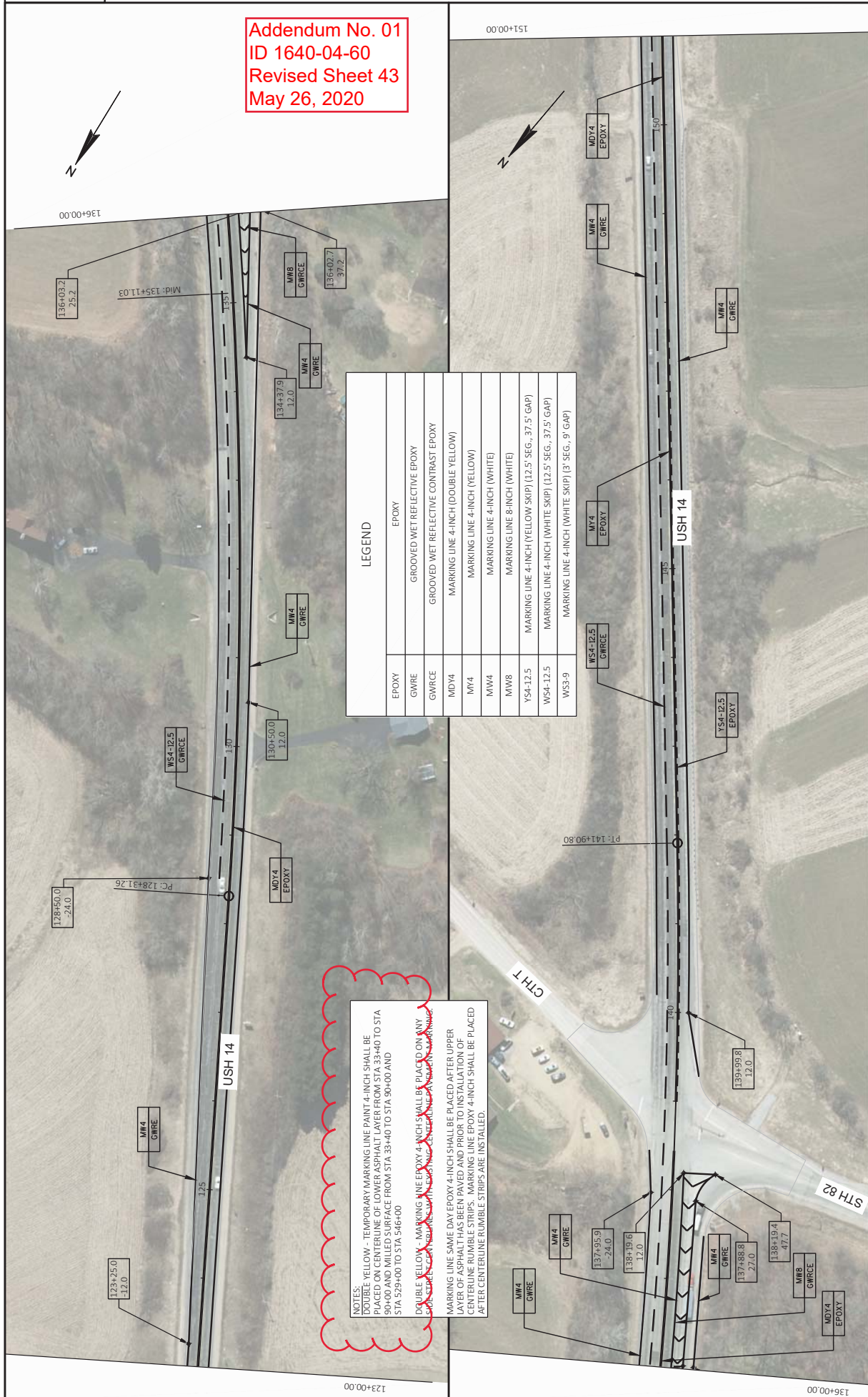


LEGEND	
EPOXY	EPOXY
GWRE	GROOVED WET REFLECTIVE EPOXY
GWRC	GROOVED WET REFLECTIVE CONTRAST EPOXY
MDY4	MARKING LINE 4-INCH (DOUBLE YELLOW)
MW4	MARKING LINE 4-INCH (YELLOW)
MW4	MARKING LINE 4-INCH (WHITE)
MW8	MARKING LINE 8-INCH (WHITE)
YS4-12.5	MARKING LINE 4-INCH (YELLOW SKIP) (12.5' SEG., 37.5' GAP)
WS4-12.5	MARKING LINE 4-INCH (WHITE SKIP) (12.5' SEG., 37.5' GAP)
WS3-9	MARKING LINE 4-INCH (WHITE SKIP) (9' SEG., 9' GAP)

NOTES:
 DOUBLE YELLOW - TEMPORARY MARKING LINE PAINT 4-INCH SHALL BE PLACED ON CENTERLINE OF LOWER ASPHALT LAYER FROM STA 33+40 TO STA 90+00 AND MILLED SURFACE FROM STA 33+40 TO STA 90+00 AND STA 329+60 TO STA 346+00
 DOUBLE YELLOW MARKING LINE EPOXY 4-INCH SHALL BE PLACED ON UPPER ASPHALT LAYER WITH EXISTING CENTERLINE PAVEMENT MARKING.
 MARKING LINE SAME DAY EPOXY 4-INCH SHALL BE PLACED AFTER UPPER LAYER OF ASPHALT HAS BEEN PAVED AND PRIOR TO INSTALLATION OF CENTERLINE RUMBLE STRIPS. MARKING LINE EPOXY 4-INCH SHALL BE PLACED AFTER CENTERLINE RUMBLE STRIPS ARE INSTALLED.

Addendum No. 01
 ID 1640-04-60
 Revised Sheet 42
 May 26, 2020

Addendum No. 01
ID 1640-04-60
Revised Sheet 43
May 26, 2020



LEGEND	
EPOXY	EPOXY
GWRCE	GROOVED WET REFLECTIVE EPOXY
GWRCE	GROOVED WET REFLECTIVE CONTRAST EPOXY
MDY4	MARKING LINE 4-INCH (DOUBLE YELLOW)
MW4	MARKING LINE 4-INCH (YELLOW)
MW4	MARKING LINE 4-INCH (WHITE)
MW8	MARKING LINE 8-INCH (WHITE)
YS4-12.5	MARKING LINE 4-INCH (YELLOW SKIP) (12.5' SEG., 37.5' GAP)
WS4-12.5	MARKING LINE 4-INCH (WHITE SKIP) (12.5' SEG., 37.5' GAP)
WS3-9	MARKING LINE 4-INCH (WHITE SKIP) (3' SEG., 9' GAP)

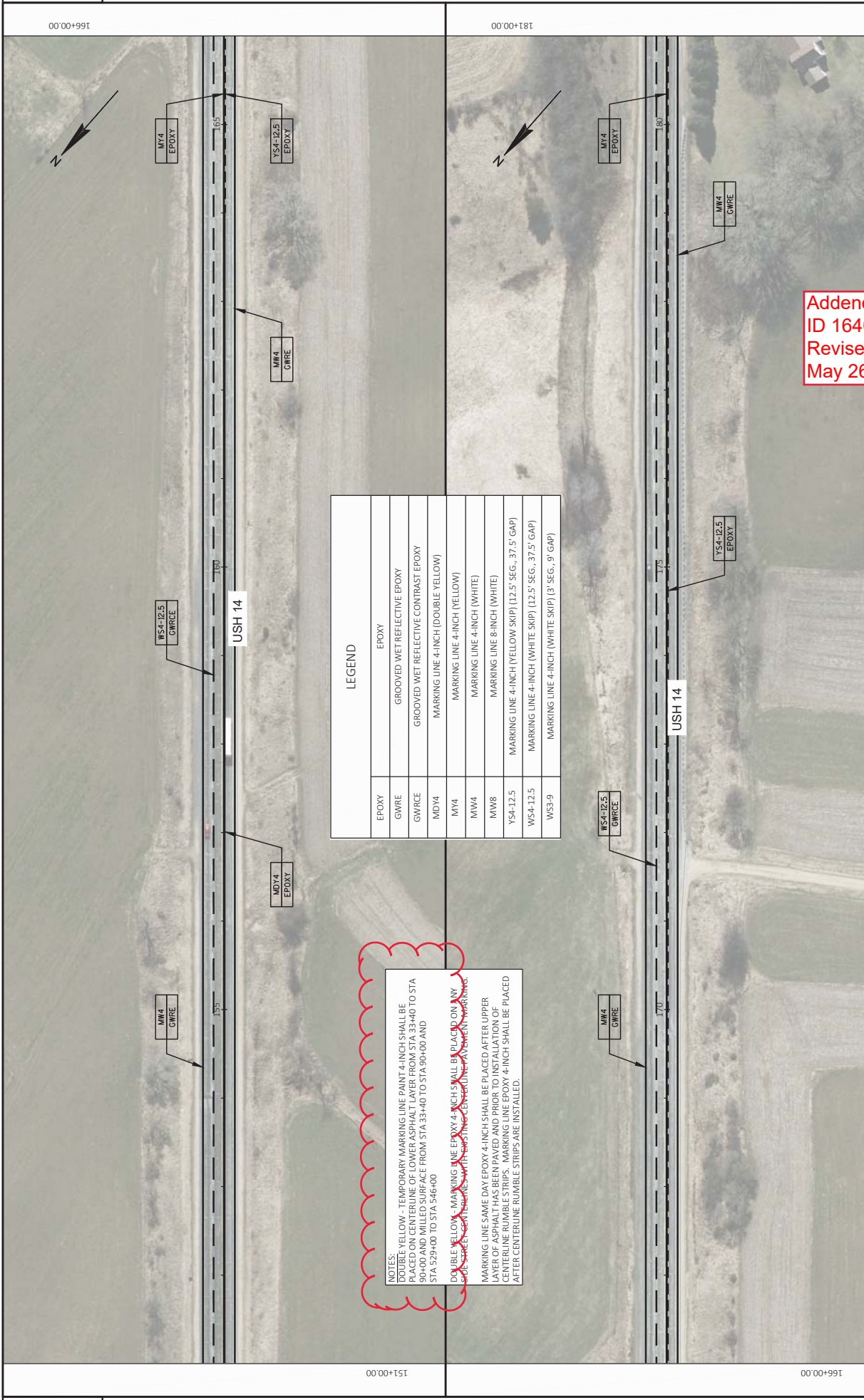
NOTES:

DOUBLE YELLOW - TEMPORARY MARKING LINE PAINT 4-INCH SHALL BE PLACED ON CENTERLINE OF LOWER ASPHALT LAYER FROM STA. 33+40 TO STA. 90+00 AND MILLED SURFACE FROM STA. 33+40 TO STA. 90+00 AND STA. 529+00 TO STA. 546+00

DOUBLE YELLOW - MARKING LINE EPOXY 4-INCH SHALL BE PLACED ON ANY SURFACE WHERE THE MILLING IS NOT APPLICABLE.

MARKING LINE SAME DAY EPOXY 4-INCH SHALL BE PLACED AFTER UPPER ASPHALT LAYER IS PLACED AND THE SURFACE IS FINISHED.

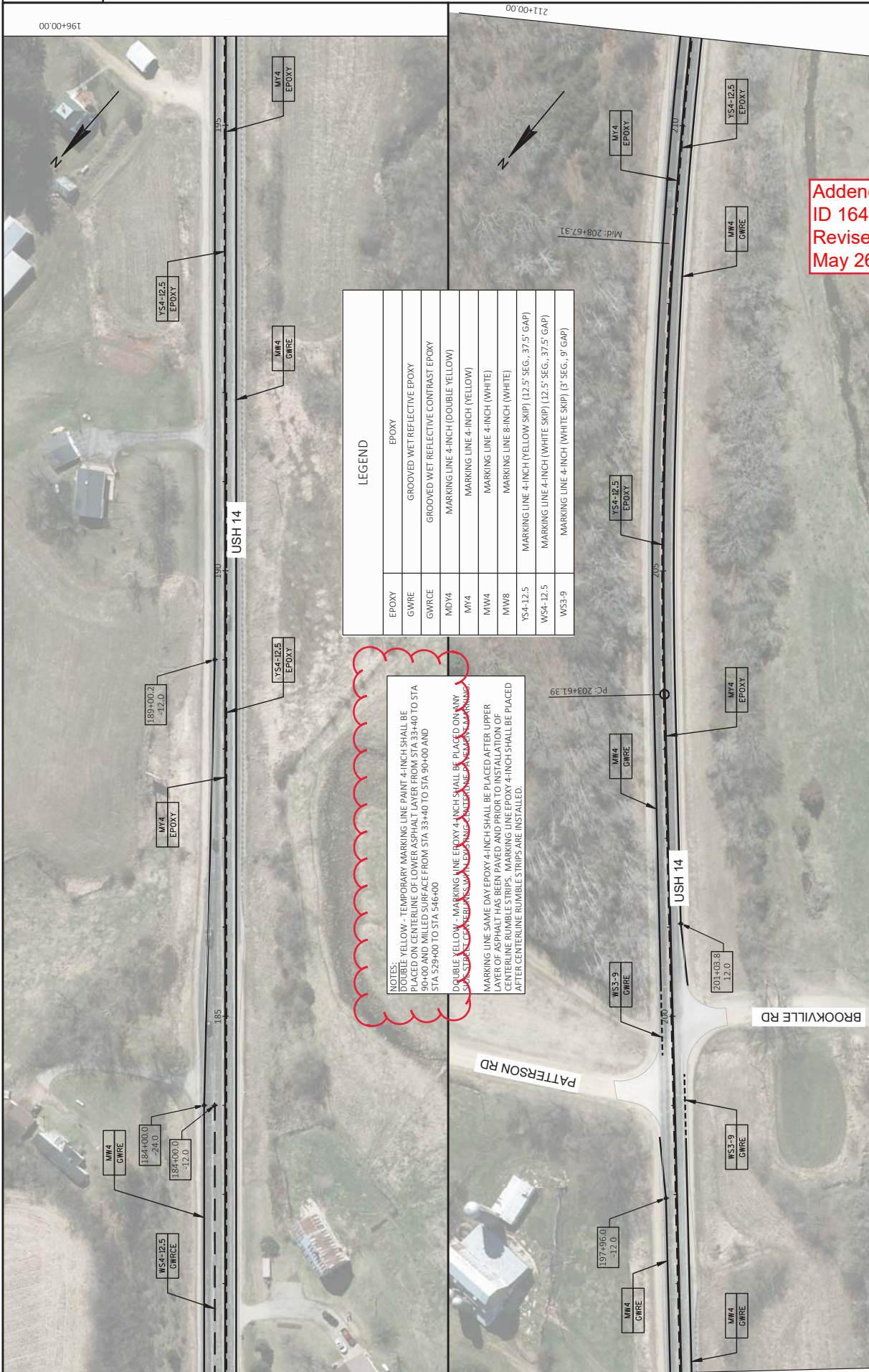
CENTERLINE RUMBLE STRIPS - MARKING LINE EPOXY 4-INCH SHALL BE PLACED AFTER CENTERLINE RUMBLE STRIPS ARE INSTALLED.



LEGEND	
EPOXY	EPOXY
GWR	GROOVED WET REFLECTIVE EPOXY
GWRCE	GROOVED WET REFLECTIVE CONTRAST EPOXY
MDY4	MARKING LINE 4-INCH (DOUBLE YELLOW)
MY4	MARKING LINE 4-INCH (YELLOW)
MW4	MARKING LINE 4-INCH (WHITE)
MW8	MARKING LINE 8-INCH (WHITE)
YS4-12.5	MARKING LINE 4-INCH (YELLOW SKIP) (12.5' SEG., 37.5' GAP)
WS4-12.5	MARKING LINE 4-INCH (WHITE SKIP) (12.5' SEG., 37.5' GAP)
WS3-9	MARKING LINE 4-INCH (WHITE SKIP) (3' SEG., 9' GAP)

NOTES:
 DOUBLE YELLOW - TEMPORARY MARKING LINE PAINT 4-INCH SHALL BE PLACED ON CENTERLINE OF LOWER ASPHALT LAYER FROM STA 33+40 TO STA 34+00 AND SHALL BE PLACED ON CENTERLINE OF UPPER ASPHALT LAYER FROM STA 35+40 TO STA 36+00 AND STA 529+00 TO STA 546+00
 DOUBLE YELLOW - MARKING LINE EPOXY 4-INCH SHALL BE PLACED ON ANY SURFACE WITH THE EXISTING EPOXY MARKINGS
 MARKING LINE SAME DAY EPOXY 4-INCH SHALL BE INSTALLED AFTER UPPER LAYER OF ASPHALT HAS BEEN PAVED AND PRIOR TO INSTALLATION OF CENTERLINE RUMBLE STRIPS. MARKING LINE EPOXY 4-INCH SHALL BE PLACED AFTER CENTERLINE RUMBLE STRIPS ARE INSTALLED.

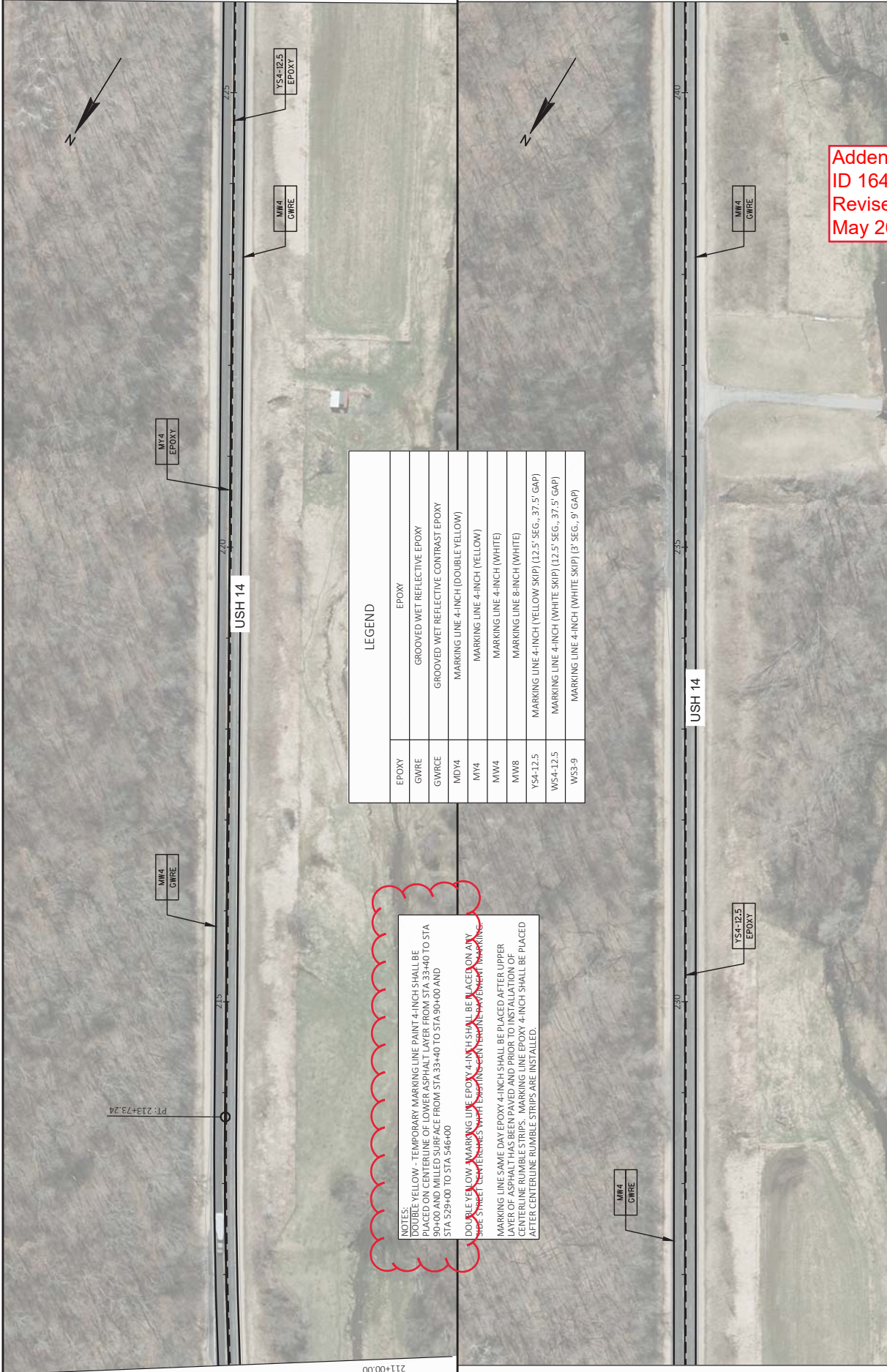
Addendum No. 01
 ID 1640-04-60
 Revised Sheet 44
 May 26, 2020



LEGEND	
EPOXY	EPOXY
GWRE	GROOVED WET REFLECTIVE EPOXY
GWRC	GROOVED WET REFLECTIVE CONTRAST EPOXY
MDY4	MARKING LINE 4-INCH (DOUBLE YELLOW)
MY4	MARKING LINE 4-INCH (YELLOW)
MW4	MARKING LINE 4-INCH (WHITE)
MW8	MARKING LINE 8-INCH (WHITE)
YS4-12.5	MARKING LINE 4-INCH (YELLOW SKIP) (12.5' SEG., 37.5' GAP)
WS4-12.5	MARKING LINE 4-INCH (WHITE SKIP) (12.5' SEG., 37.5' GAP)
WS3-9	MARKING LINE 4-INCH (WHITE SKIP) (3' SEG., 9' GAP)

NOTES:
 DOUBLE YELLOW - TEMPORARY MARKING LINE PAINT 4-INCH SHALL BE PLACED ON THE SAME DAY AS THE ASPHALT LAYER. SPALLS SHALL BE PATCHED FROM STA 33+40 TO STA 39+00 AND MILLED SURFACE FROM STA 33+40 TO STA 39+00 AND STA 529+00 TO STA 546+00.
 DOUBLE YELLOW - MARKING LINE EPOXY 4-INCH SHALL BE PLACED ON ANY SPALLS OR PATCHES. LEAVING A MINIMUM 2-INCH GAP BETWEEN MARKING LINES.
 MARKING LINE SAME DAY EPOXY 4-INCH SHALL BE PLACED AFTER UPPER LAYER OF ASPHALT HAS BEEN PAVED AND PRIOR TO INSTALLATION OF CENTERLINE RUMBLE STRIPS. MARKING LINE EPOXY 4-INCH SHALL BE PLACED AFTER CENTERLINE RUMBLE STRIPS ARE INSTALLED.

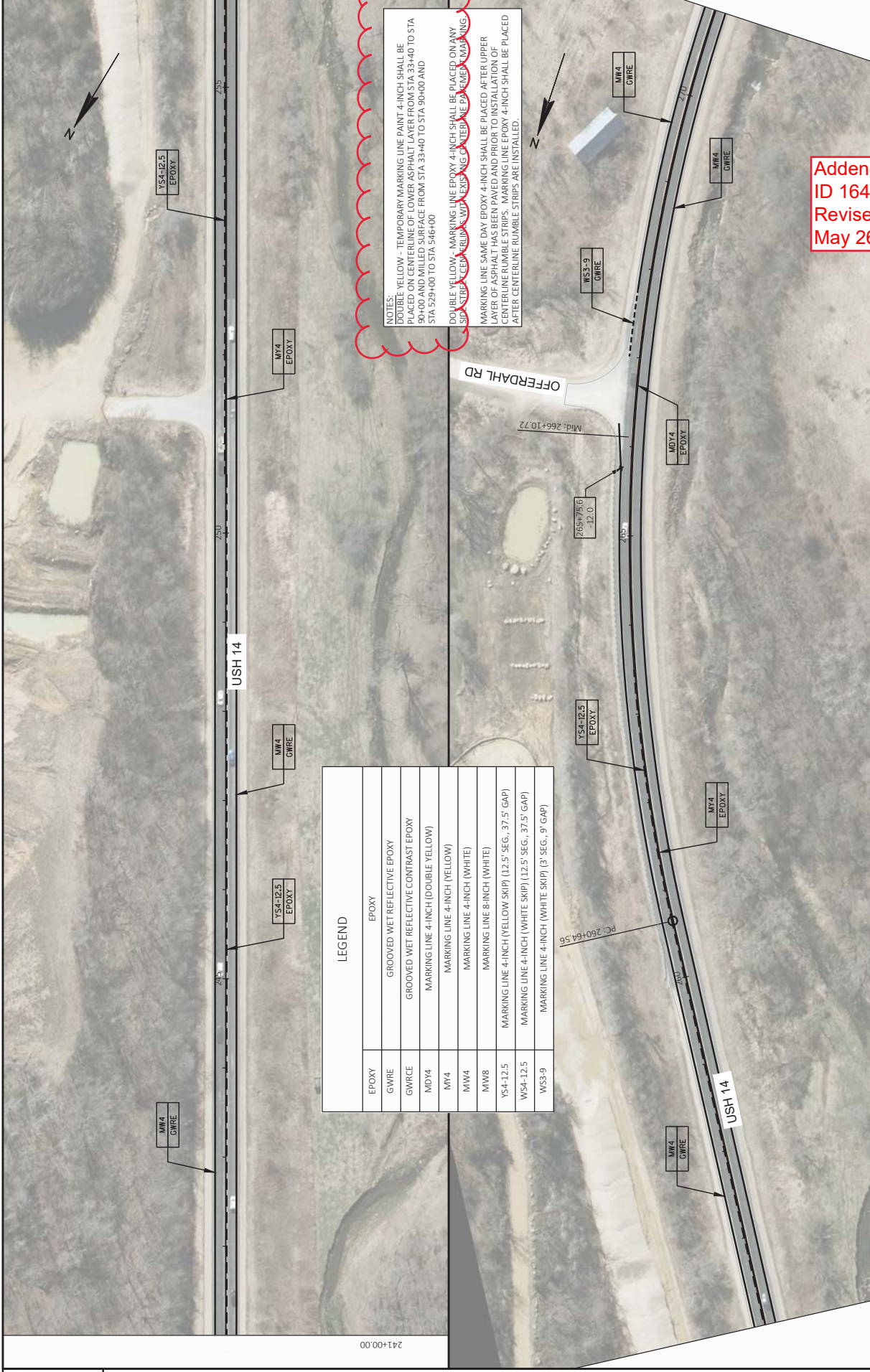
Addendum No. 01
ID 1640-04-60
Revised Sheet 45
May 26, 2020



LEGEND	
EPOXY	EPOXY
GWRE	GROOVED WET REFLECTIVE EPOXY
GWRC	GROOVED WET REFLECTIVE CONTRAST EPOXY
MDY4	MARKING LINE 4-INCH (DOUBLE YELLOW)
MY4	MARKING LINE 4-INCH (YELLOW)
MW4	MARKING LINE 4-INCH (WHITE)
MW8	MARKING LINE 8-INCH (WHITE)
YS4-12.5	MARKING LINE 4-INCH (YELLOW SKIP) (12.5' SEG., 37.5' GAP)
WS4-12.5	MARKING LINE 4-INCH (WHITE SKIP) (12.5' SEG., 37.5' GAP)
WS3-9	MARKING LINE 4-INCH (WHITE SKIP) (3' SEG., 9' GAP)

NOTES:
 DOUBLE YELLOW - TEMPORARY MARKING LINE PAINT 4-INCH SHALL BE PLACED ON CENTERLINE OF LOWER ASPHALT LAYER FROM STA 33+40 TO STA 90+00 AND MILLED SURFACE FROM STA 33+40 TO STA 90+00 AND STA 529+00 TO STA 546+00
 DOUBLE YELLOW MARKING LINE EPOXY 4-INCH SHALL BE PLACED ON ANY SIDE STREET CENTERLINE WITH EXISTING CENTERLINE YELLOW MARKINGS
 MARKING LINE SAME DAY EPOXY 4-INCH SHALL BE PLACED AFTER UPPER LAYER OF ASPHALT HAS BEEN PAVED AND PRIOR TO INSTALLATION OF CENTERLINE RUMBLE STRIPS. MARKING LINE EPOXY 4-INCH SHALL BE PLACED AFTER CENTERLINE RUMBLE STRIPS ARE INSTALLED.

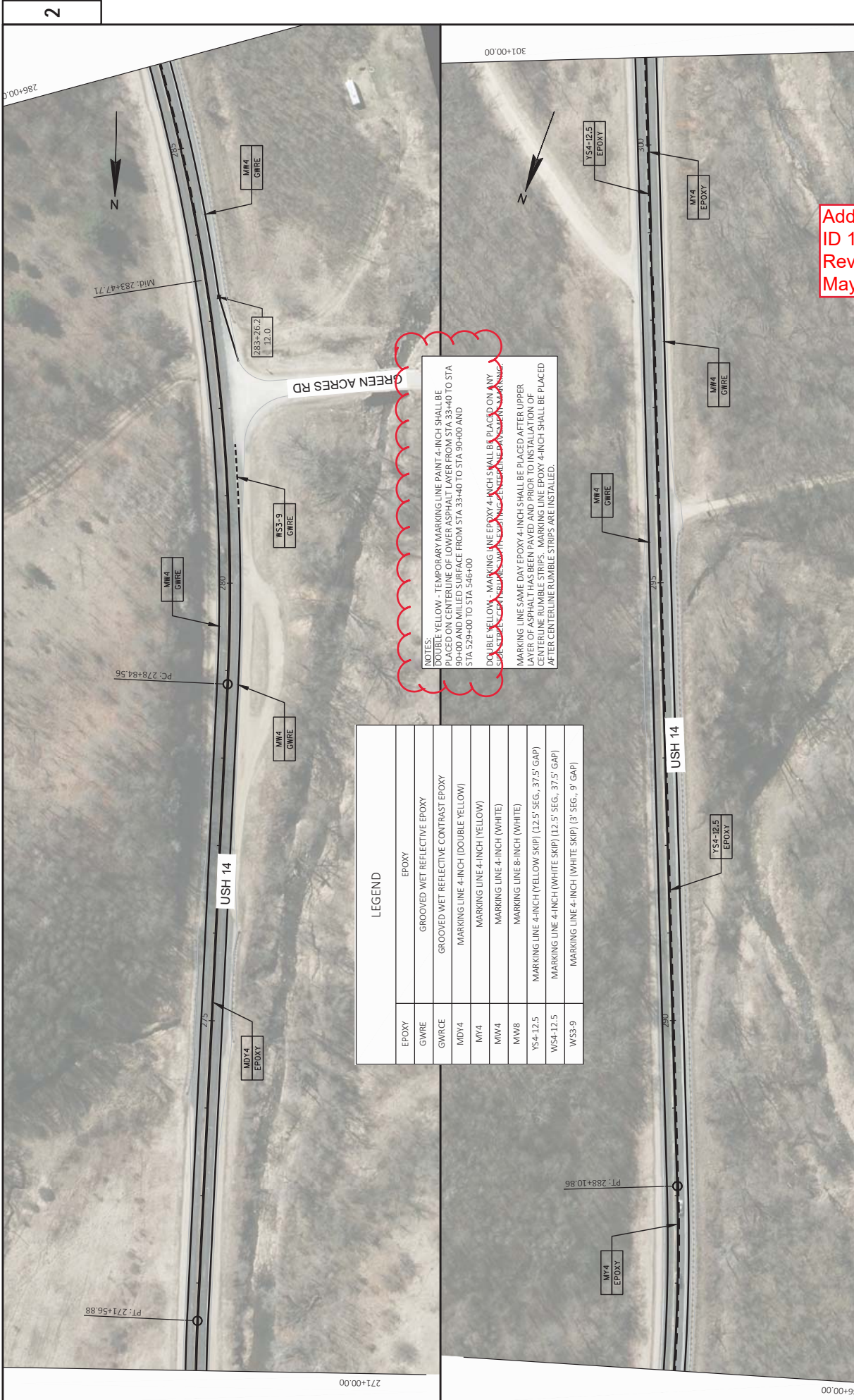
Addendum No. 01
 ID 1640-04-60
 Revised Sheet 46
 May 26, 2020



LEGEND	
EPOXY	EPOXY
GWRE	GROOVED WET REFLECTIVE EPOXY
GWRC	GROOVED WET REFLECTIVE CONTRAST EPOXY
MDY4	MARKING LINE 4-INCH (DOUBLE YELLOW)
MW4	MARKING LINE 4-INCH (YELLOW)
MW4	MARKING LINE 4-INCH (WHITE)
MW8	MARKING LINE 8-INCH (WHITE)
YS4-12.5	MARKING LINE 4-INCH (YELLOW SKIP) (12.5' SEG., 37.5' GAP)
WS4-12.5	MARKING LINE 4-INCH (WHITE SKIP) (12.5' SEG., 37.5' GAP)
WS3-9	MARKING LINE 4-INCH (WHITE SKIP) (3' SEG., 9' GAP)

NOTES:
 DOUBLE YELLOW - TEMPORARY MARKING LINE PAINT 4-INCH SHALL BE PLACED ON CENTERLINE OF LOWER ASPHALT LAYER FROM STA 33+40 TO STA 90+00 AND MILLED SURFACE FROM STA 33+40 TO STA 90+00 AND STA 529+00 TO STA 546+00
 DOUBLE YELLOW - MARKING LINE EPOXY 4-INCH SHALL BE PLACED ON ANY SIDE STRIP, CENTERLINE, AND EXISTING CENTERLINE MARKING
 MARKING LINE SAME DAY EPOXY 4-INCH SHALL BE PLACED AFTER UPPER LAYER OF ASPHALT HAS BEEN PAVED AND PRIOR TO INSTALLATION OF CENTERLINE RUMBLE STRIPS. MARKING LINE EPOXY 4-INCH SHALL BE PLACED AFTER CENTERLINE RUMBLE STRIPS ARE INSTALLED.

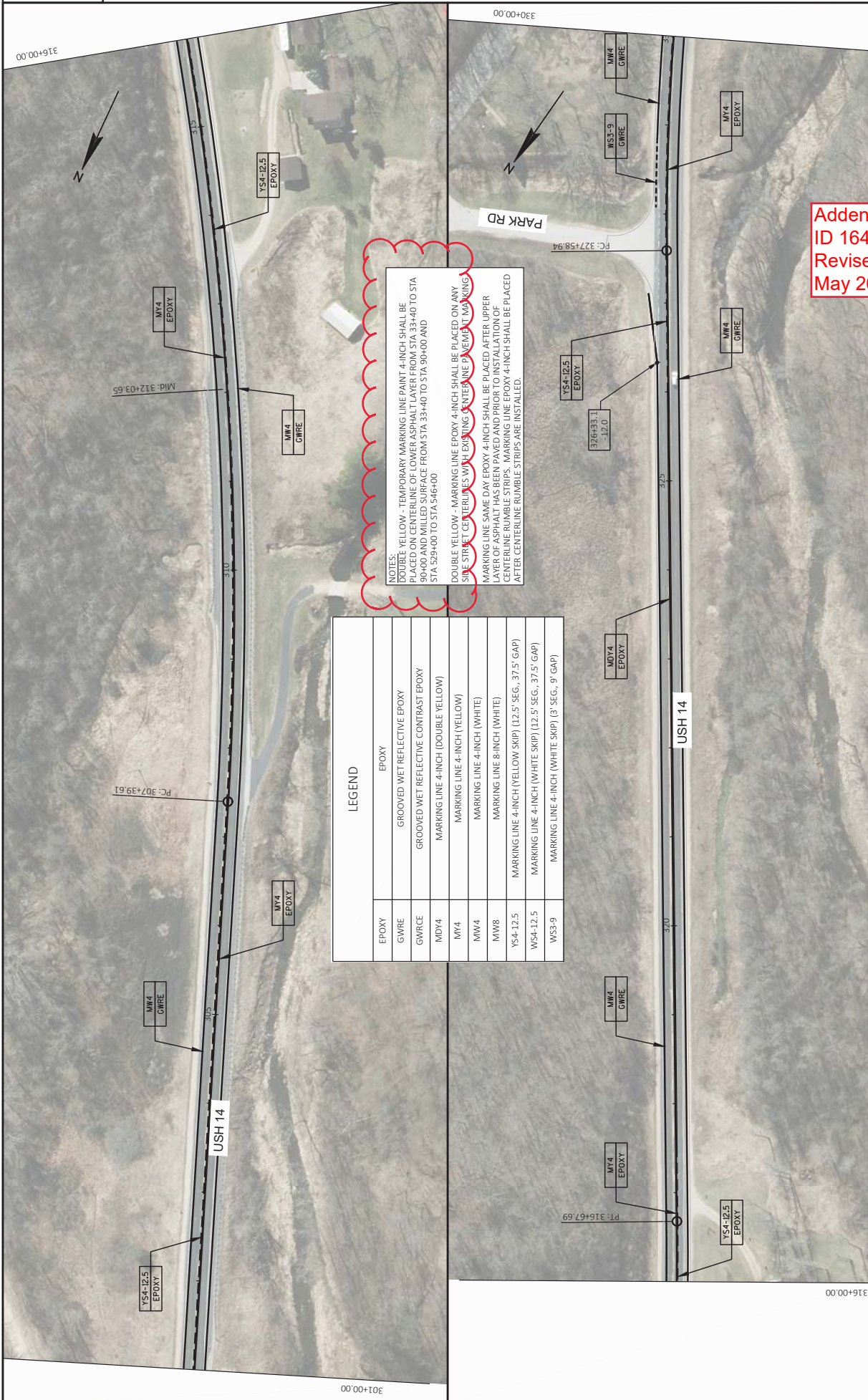
Addendum No. 01
 ID 1640-04-60
 Revised Sheet 47
 May 26, 2020



NOTES:
 DOUBLE YELLOW - TEMPORARY MARKING LINE PAINT 4-INCH SHALL BE PLACED ON CENTERLINE OF LOWER ASPHALT LAYER FROM STA 33+40 TO STA 90+00 AND MILLED SURFACE FROM STA 33+40 TO STA 90+00 AND STA 529+00 TO STA 546+00
 DOUBLE YELLOW MARKING LINE EPOXY 4-INCH SHALL BE PLACED ON ANY SURFACE WITH CONC RET OR ASPHALT SURFACE
 MARKING LINE SAME ONLY EPOXY 4-INCH SHALL BE PLACED AFTER UPPER LAYER OF ASPHALT IS COMPLETED
 AFTER CENTERLINE RUMBLE STRIPS, MARKING LINE EPOXY 4-INCH SHALL BE PLACED AFTER CENTERLINE RUMBLE STRIPS ARE INSTALLED.

LEGEND	
EPOXY	EPOXY
GWRE	GROOVED WET REFLECTIVE EPOXY
GWRC	GROOVED WET REFLECTIVE CONTRAST EPOXY
MDV4	MARKING LINE 4-INCH (DOUBLE YELLOW)
MV4	MARKING LINE 4-INCH (YELLOW)
MW4	MARKING LINE 8-INCH (WHITE)
MW8	MARKING LINE 8-INCH (WHITE)
YS4-12.5	MARKING LINE 4-INCH (YELLOW SKIP) (12.5' SEG., 37.5' GAP)
WS4-12.5	MARKING LINE 4-INCH (WHITE SKIP) (12.5' SEG., 37.5' GAP)
WS3-9	MARKING LINE 4-INCH (WHITE SKIP) (37' SEG., 9' GAP)

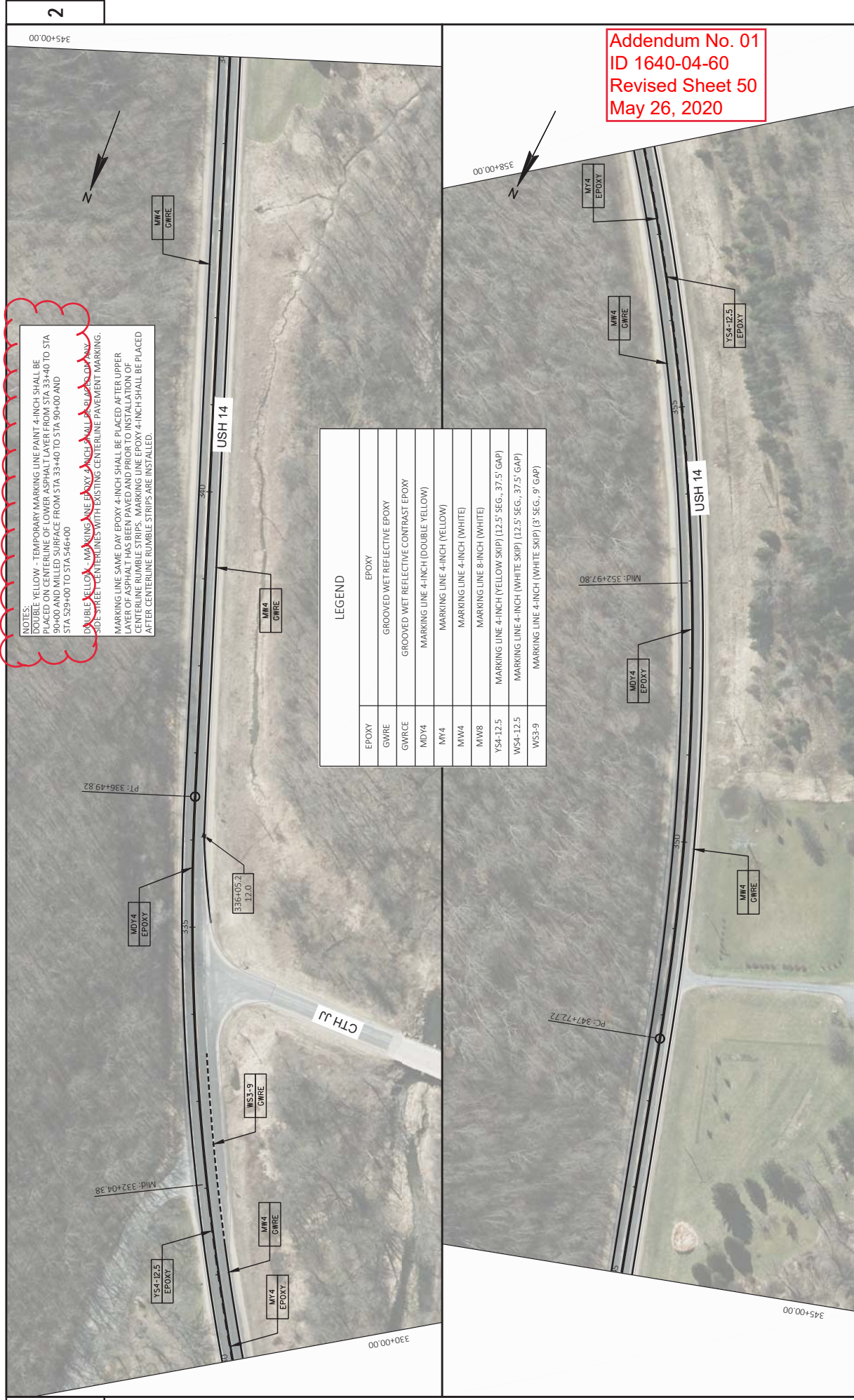
Addendum No. 01
 ID 1640-04-60
 Revised Sheet 48
 May 26, 2020



NOTES:
 1. YELLOW - TEMPORARY MARKING LINE PAINT 4-INCH SHALL BE PLACED ON CENTERLINE OF LOWER ASPHALT LAYER FROM STA 33+40 TO STA 90+00 AND MILLED SURFACE FROM STA 33+40 TO STA 90+00 AND STA 529+00 TO STA 546+00
 2. DOUBLE YELLOW - MARKING LINE EPOXY 4-INCH SHALL BE PLACED ON ANY SIDE STREET CENTERLINES WITH EXISTING CENTERLINE PAVEMENT MARKING
 3. MARKING LINE SAME DAY EPOXY 4-INCH SHALL BE PLACED AFTER UPPER LAYER OF ASPHALT HAS BEEN PAVED AND PRIOR TO INSTALLATION OF CENTERLINE RUMBLE STRIPS. MARKING LINE EPOXY 4-INCH SHALL BE PLACED AFTER CENTERLINE RUMBLE STRIPS ARE INSTALLED.

LEGEND	
EPOXY	EPOXY
GWRE	GROOVED WET REFLECTIVE EPOXY
GWRC	GROOVED WET REFLECTIVE CONTRAST EPOXY
MDY4	MARKING LINE 4-INCH (DOUBLE YELLOW)
MW4	MARKING LINE 4-INCH (YELLOW)
MW4	MARKING LINE 4-INCH (WHITE)
MW8	MARKING LINE 8-INCH (WHITE)
YS4-12.5	MARKING LINE 4-INCH (YELLOW SKIP) (12.5' SEG., 37.5' GAP)
WS4-12.5	MARKING LINE 4-INCH (WHITE SKIP) (12.5' SEG., 37.5' GAP)
WS3-9	MARKING LINE 4-INCH (WHITE SKIP) [3' SEG., 9' GAP]

Addendum No. 01
 ID 1640-04-60
 Revised Sheet 49
 May 26, 2020

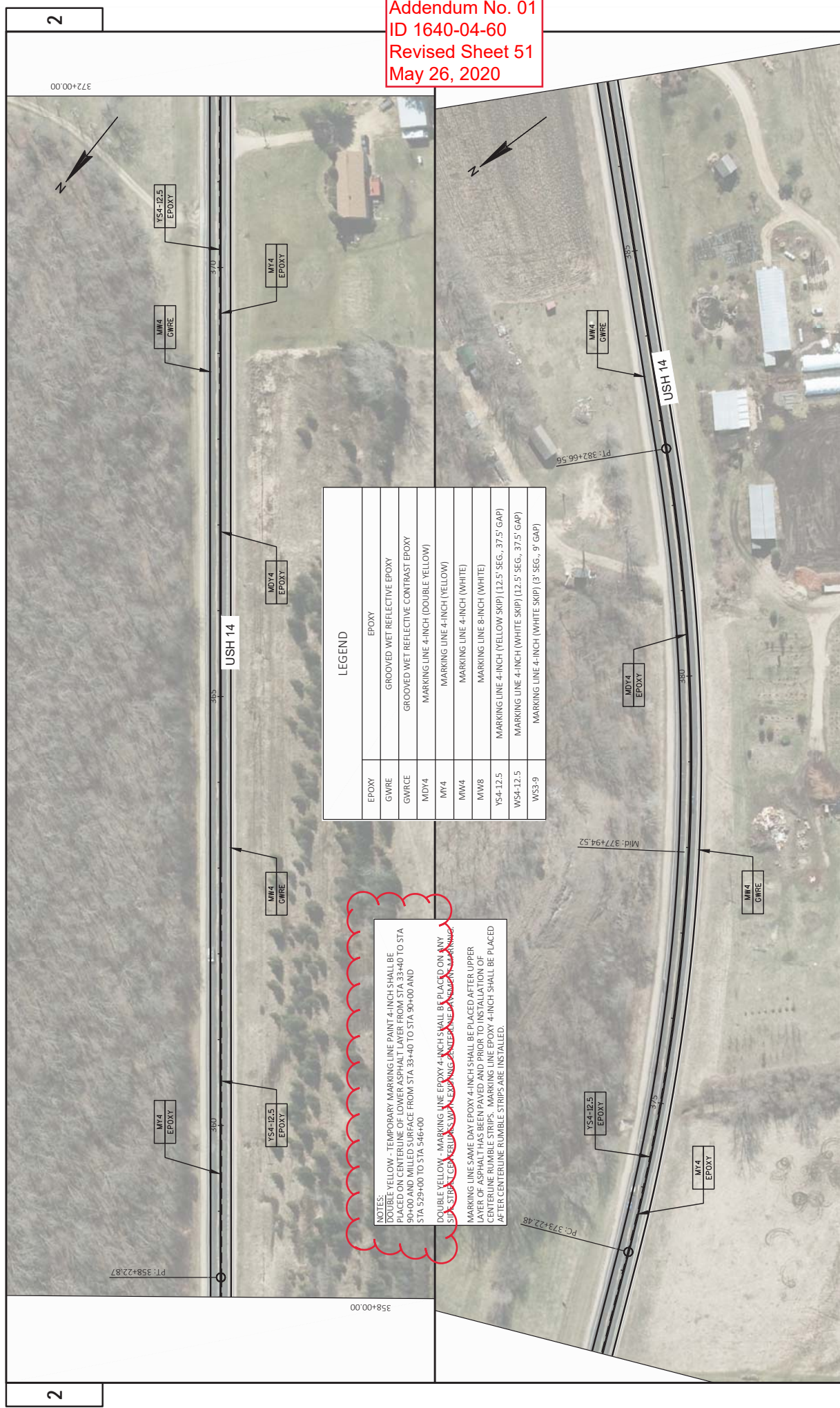


NOTES:
 DOUBLE YELLOW - TEMPORARY MARKING LINE PAINT 4-INCH SHALL BE PLACED ON CENTERLINE OF LOWER ASPHALT LAYER FROM STA 33+40 TO STA 90+00 AND MILLED SURFACE FROM STA 33+40 TO STA 90+00 AND STA 529+00 TO STA 546+00
 DOUBLE YELLOW - MARKING LINE EPOXY 4-INCH SHALL BE PLACED ON SIDE STREET CENTERLINES WITH EXISTING CENTERLINE PAVEMENT MARKING.
 MARKING LINE SAME DAY EPOXY 4-INCH SHALL BE PLACED AFTER UPPER CENTERLINE RUMBLE STRIPS. MARKING LINE EPOXY 4-INCH SHALL BE PLACED AFTER CENTERLINE RUMBLE STRIPS ARE INSTALLED.

LEGEND	
EPOXY	EPOXY
GWRCE	GROOVED WET REFLECTIVE EPOXY
GWRCE	GROOVED WET REFLECTIVE CONTRAST EPOXY
MDY4	MARKING LINE 4-INCH (DOUBLE YELLOW)
MP4	MARKING LINE 4-INCH (YELLOW)
MW4	MARKING LINE 4-INCH (WHITE)
MW8	MARKING LINE 8-INCH (WHITE)
YS4-12.5	MARKING LINE 4-INCH (YELLOW SKIP) (12.5' SEG., 37.5' GAP)
WS4-12.5	MARKING LINE 4-INCH (WHITE SKIP) (12.5' SEG., 37.5' GAP)
WS3-9	MARKING LINE 4-INCH (WHITE SKIP) (3' SEG., 9' GAP)

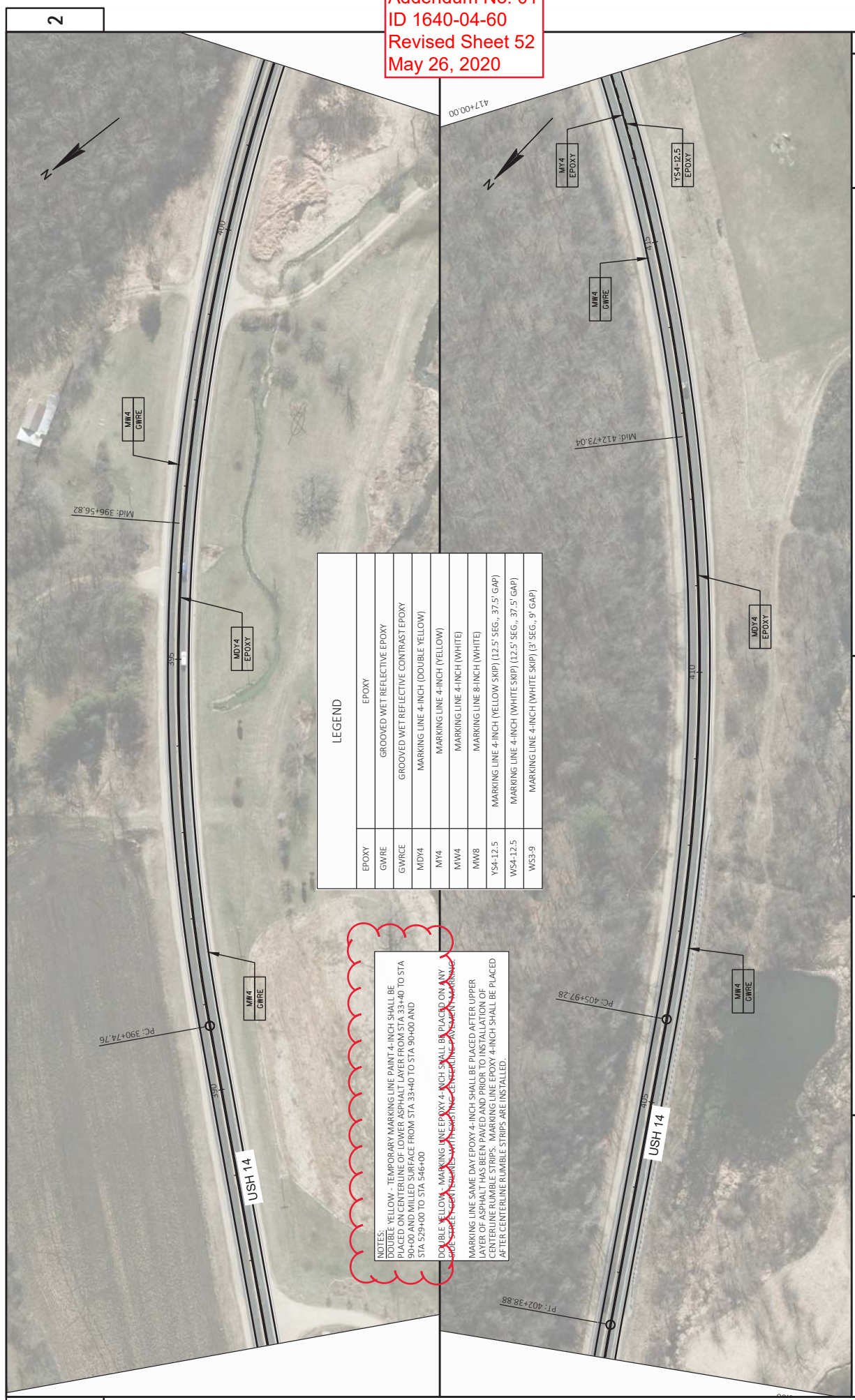
Addendum No. 01
 ID 1640-04-60
 Revised Sheet 50
 May 26, 2020

Addendum No. 01
 ID 1640-04-60
 Revised Sheet 51
 May 26, 2020



LEGEND	
EPOXY	EPOXY
GWRCE	GROOVED WET REFLECTIVE EPOXY
GWRCE	GROOVED WET REFLECTIVE CONTRAST EPOXY
MDY4	MARKING LINE 4-INCH (DOUBLE YELLOW)
MW4	MARKING LINE 4-INCH (YELLOW)
MW4	MARKING LINE 4-INCH (WHITE)
MW8	MARKING LINE 8-INCH (WHITE)
Y54-12.5	MARKING LINE 4-INCH (YELLOW SKIP) (12.5' SEG., 37.5' GAP)
W54-12.5	MARKING LINE 4-INCH (WHITE SKIP) (12.5' SEG., 37.5' GAP)
W53-9	MARKING LINE 4-INCH (WHITE SKIP) (3' SEG., 9' GAP)

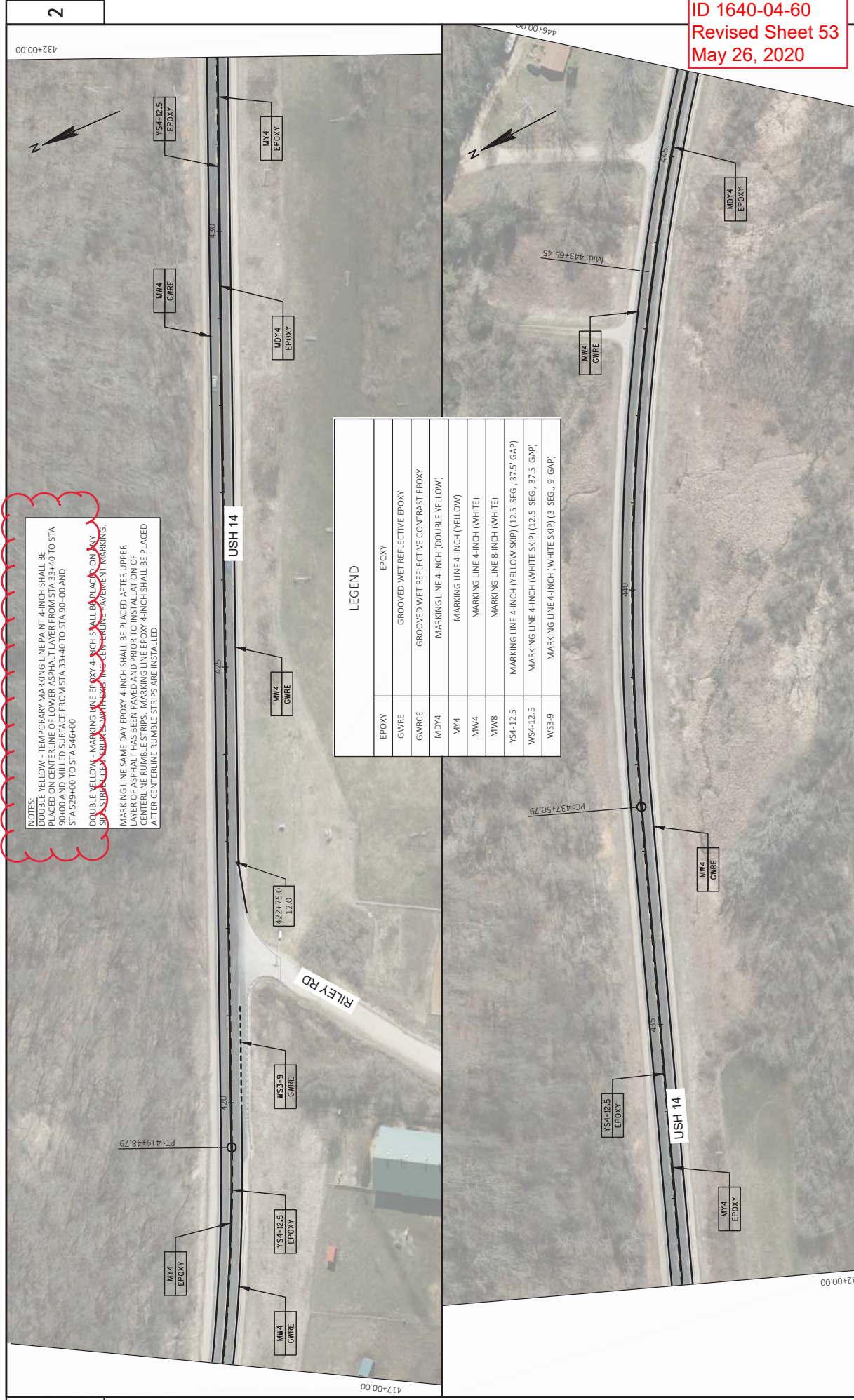
NOTES:
 DOUBLE YELLOW - TEMPORARY MARKING LINE PAINT 4-INCH SHALL BE PLACED ON CENTERLINE OF LOWER ASPHALT LAYER FROM STA 33+40 TO STA 90+00 AND MILLED SURFACE FROM STA 33+40 TO STA 90+00 AND STA 529+00 TO STA 546+00
 DOUBLE YELLOW - MARKING LINE EPOXY 4-INCH SHALL BE PLACED ON ANY SURFACE AFTER THE LOWER ASPHALT LAYER IS PLACED AND THE MARKING LINE SAME DAY EPOXY 4-INCH SHALL BE PLACED AFTER UPPER LAYER OF ASPHALT HAS BEEN PAVED AND PRIOR TO INSTALLATION OF CENTERLINE MARKING LINE EPOXY 4-INCH SHALL BE PLACED AFTER CENTERLINE RUMBLE STRIPS ARE INSTALLED.



LEGEND

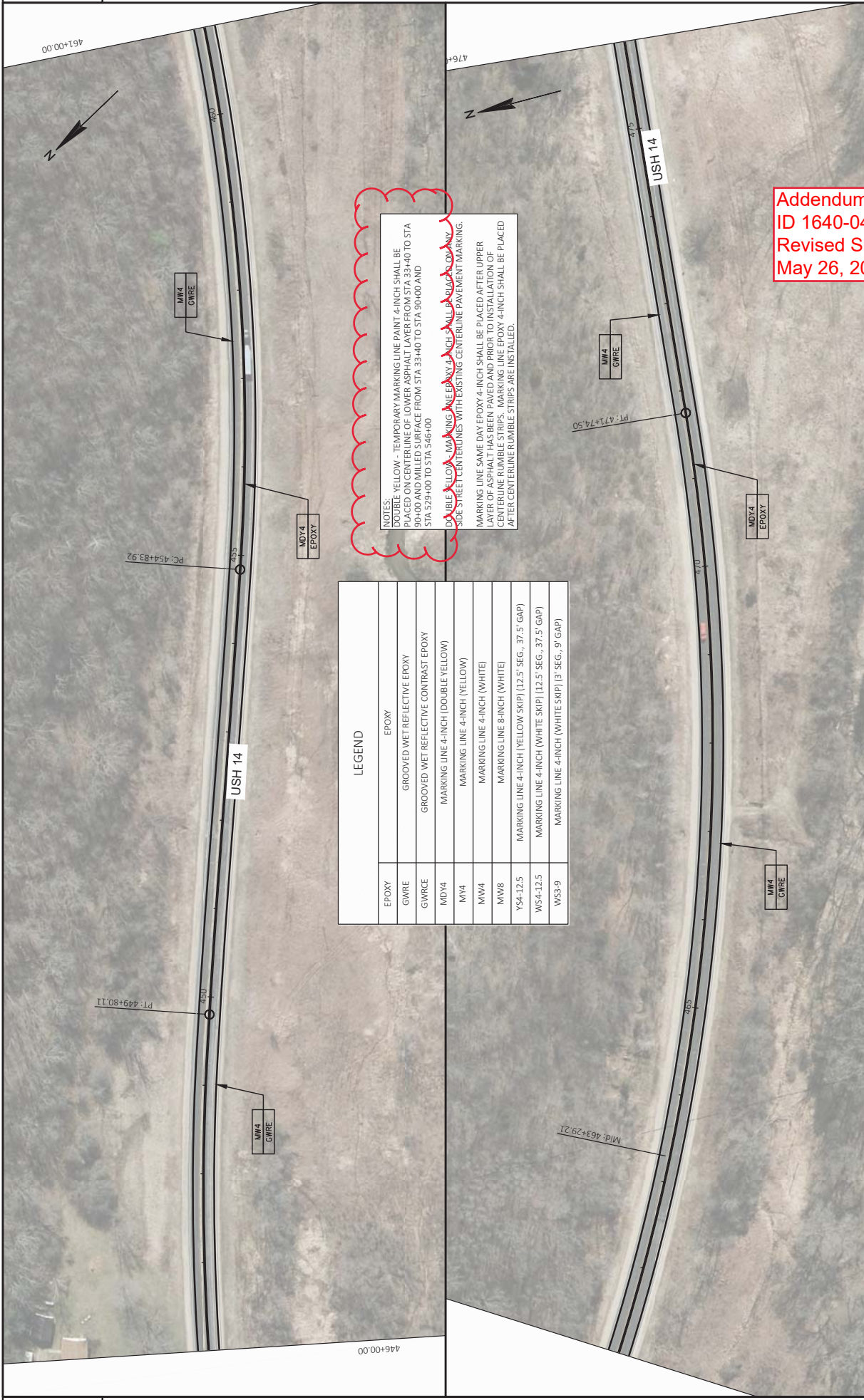
EPOXY	EPOXY
GWIRE	GROOVED WET REFLECTIVE EPOXY
GWRC	GROOVED WET REFLECTIVE CONTRAST EPOXY
MDY4	MARKING LINE 4-INCH (DOUBLE YELLOW)
MY4	MARKING LINE 4-INCH (YELLOW)
MW4	MARKING LINE 4-INCH (WHITE)
MW8	MARKING LINE 8-INCH (WHITE)
YS4-12.5	MARKING LINE 4-INCH (YELLOW SKIP) (12.5' SEG., 37.5' GAP)
WS4-12.5	MARKING LINE 4-INCH (WHITE SKIP) (12.5' SEG., 37.5' GAP)
WS3-9	MARKING LINE 4-INCH (WHITE SKIP) (3' SEG., 9' GAP)

NOTES:
 DOUBLE YELLOW - TEMPORARY MARKING LINE PAINT 4-INCH SHALL BE PLACED ON CENTERLINE OF LOWER ASPHALT LAYER FROM STA 33+40 TO STA 90+00 AND MILLED SURFACE FROM STA 33+40 TO STA 90+00 AND STA 529+00 TO STA 546+00
 DOUBLE YELLOW - MARKING LINE EPOXY 4-INCH SHALL BE PLACED ON ANY 4-INCH YELLOW MARKING LINE AFTER RUMBLE STRIPS ARE INSTALLED.
 MARKING LINE SAME DAY EPOXY 4-INCH SHALL BE PLACED AFTER UPPER LAYER OF ASPHALT HAS BEEN PAVED AND PRIOR TO INSTALLATION OF CENTERLINE RUMBLE STRIPS. MARKING LINE EPOXY 4-INCH SHALL BE PLACED AFTER CENTERLINE RUMBLE STRIPS ARE INSTALLED.



NOTES:
 DOUBLE YELLOW - TEMPORARY MARKING LINE PAINT 4-INCH SHALL BE PLACED ON CENTERLINE OF LOWER ASPHALT LAYER FROM STA. 33+40 TO STA. 90+00 AND MILLED SURFACE FROM STA. 33+40 TO STA. 90+00 AND STA. 329+00 TO STA. 346+00
 DOUBLE YELLOW - MARKING LINE EPOXY 4-INCH SHALL BE PLACED ON RUMBLE STRIPS 3' CENTERLINE RUMBLE STRIPS AND CENTERLINE PAVEMENT MARKINGS.
 MARKING LINE SAME DAY EPOXY 4-INCH SHALL BE PLACED AFTER UPPER LAYER OF ASPHALT HAS BEEN PAVED AND PRIOR TO INSTALLATION OF CENTERLINE RUMBLE STRIPS. MARKING LINE EPOXY 4-INCH SHALL BE PLACED AFTER CENTERLINE RUMBLE STRIPS ARE INSTALLED.

LEGEND	
EPOXY	EPOXY
GWRE	GROOVED WET REFLECTIVE EPOXY
GWRCE	GROOVED WET REFLECTIVE CONTRAST EPOXY
MDY4	MARKING LINE 4-INCH (DOUBLE YELLOW)
MY4	MARKING LINE 4-INCH (YELLOW)
MW4	MARKING LINE 4-INCH (WHITE)
MW8	MARKING LINE 8-INCH (WHITE)
YS4-12.5	MARKING LINE 4-INCH (YELLOW SKIP) (12.5' SEG., 37.5' GAP)
WS4-12.5	MARKING LINE 4-INCH (WHITE SKIP) (12.5' SEG., 37.5' GAP)
W53-9	MARKING LINE 4-INCH (WHITE SKIP) (3' SEG., 9' GAP)



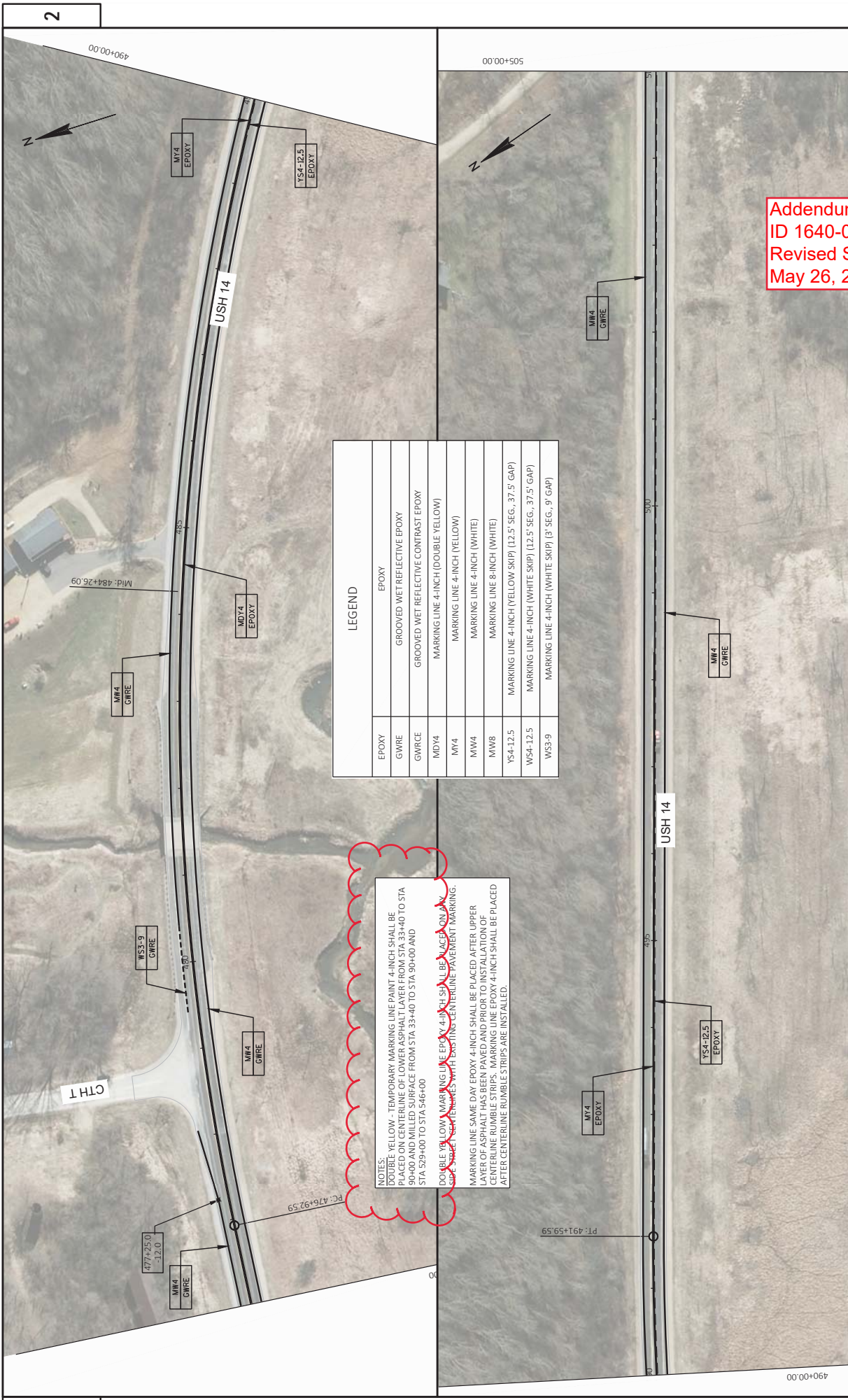
LEGEND	
EPOXY	EPOXY
GWRE	GROOVED WET REFLECTIVE EPOXY
GWRC	GROOVED WET REFLECTIVE CONTRAST EPOXY
MDY4	MARKING LINE 4-INCH (DOUBLE YELLOW)
MY4	MARKING LINE 4-INCH (YELLOW)
MW4	MARKING LINE 4-INCH (WHITE)
MW8	MARKING LINE 8-INCH (WHITE)
YS4-12.5	MARKING LINE 4-INCH (YELLOW SKIP) (12.5' SEG., 37.5' GAP)
WS4-12.5	MARKING LINE 4-INCH (WHITE SKIP) (12.5' SEG., 37.5' GAP)
WS3-9	MARKING LINE 4-INCH (WHITE SKIP) (3' SEG., 9' GAP)

NOTES: DOUBLE YELLOW - TEMPORARY MARKING LINE PAINT 4-INCH SHALL BE PLACED ON CENTERLINE OF LOWER ASPHALT LAYER FROM STA 33+40 TO STA 90+00 AND MILLED SURFACE FROM STA 33+40 TO STA 90+00 AND STA 529+00 TO STA 546+00

DOUBLE YELLOW MARKING LINE EPOXY 4-INCH SHALL BE PLACED ON LOWER SIDE STREET CENTERLINES WITH EXISTING CENTERLINE PAVEMENT MARKING.

MARKING LINE SAME DAY EPOXY 4-INCH SHALL BE PLACED AFTER UPPER LAYER OF ASPHALT HAS BEEN PAVED AND PRIOR TO INSTALLATION OF CENTERLINE RUMBLE STRIPS. MARKING LINE EPOXY 4-INCH SHALL BE PLACED AFTER CENTERLINE RUMBLE STRIPS ARE INSTALLED.

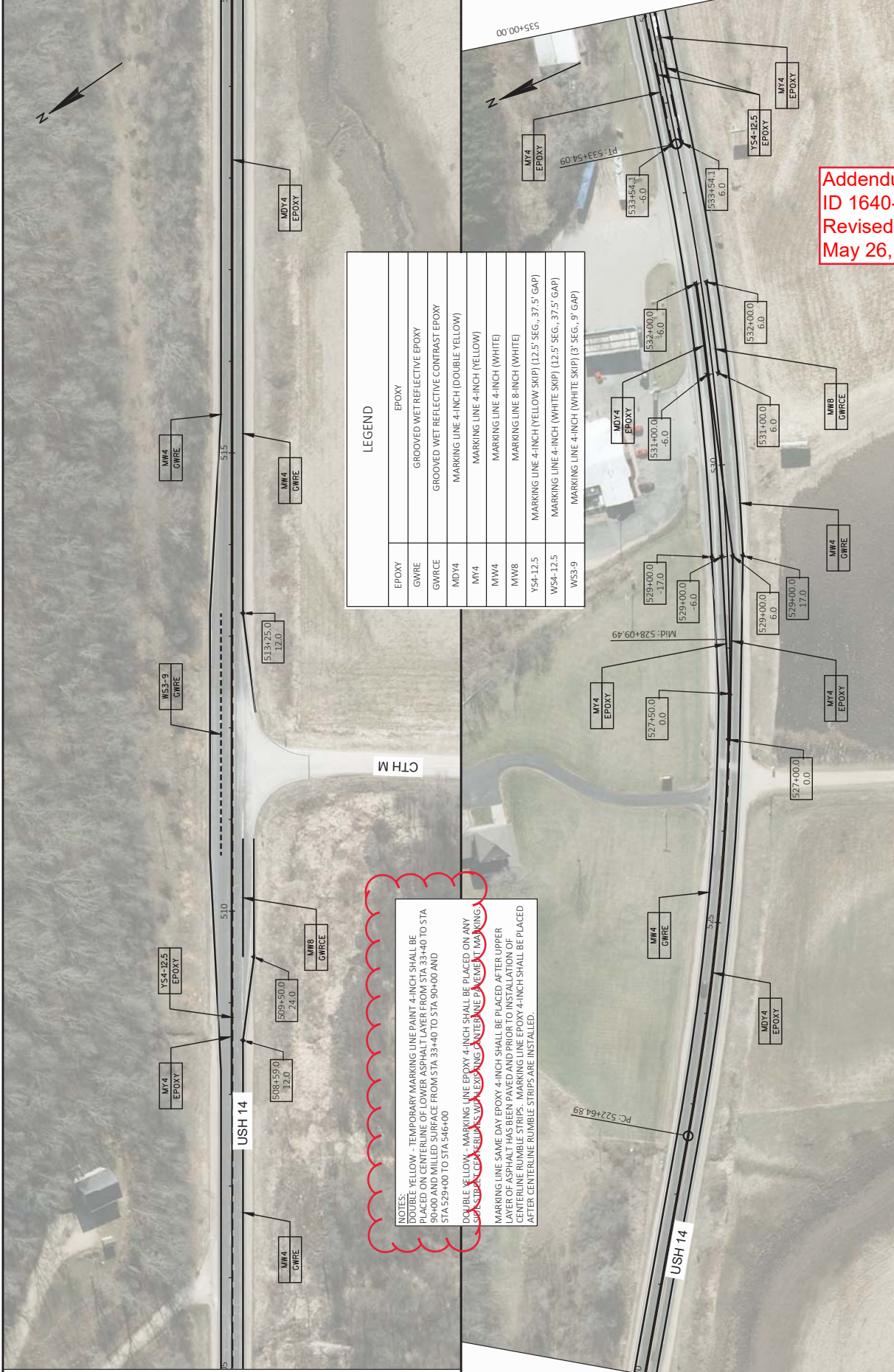
Addendum No. 01
 ID 1640-04-60
 Revised Sheet 54
 May 26, 2020



LEGEND	
EPOXY	EPOXY
GWRCE	GROOVED WET REFLECTIVE EPOXY
GWRCE	GROOVED WET REFLECTIVE CONTRAST EPOXY
MDY4	MARKING LINE 4-INCH (DOUBLE YELLOW)
MY4	MARKING LINE 4-INCH (YELLOW)
MW4	MARKING LINE 4-INCH (WHITE)
MW8	MARKING LINE 8-INCH (WHITE)
YS4-12.5	MARKING LINE 4-INCH (YELLOW SKIP) (12.5' SEG., 37.5' GAP)
WS4-12.5	MARKING LINE 4-INCH (WHITE SKIP) (12.5' SEG., 37.5' GAP)
WS3-9	MARKING LINE 4-INCH (WHITE SKIP) (3' SEG., 9' GAP)

NOTES:
 DOUBLE YELLOW - TEMPORARY MARKING LINE PAINT 4-INCH SHALL BE PLACED ON CENTERLINE OF LOWER ASPHALT LAYER FROM STA 33+40 TO STA 90+00 AND MILLED SURFACE FROM STA 33+40 TO STA 90+00 AND STA 529+00 TO STA 546+00
 DOUBLE YELLOW MARKING LINE EPOXY 4-INCH SHALL BE PLACED ON UPPER LAYER OF ASPHALT HAS BEEN PAVED AND PRIOR TO INSTALLATION OF CENTERLINE RUMBLE STRIPS WITH EXISTING CENTERLINE PAVEMENT MARKING.
 MARKING LINE SAME DAY EPOXY 4-INCH SHALL BE PLACED AFTER UPPER LAYER OF ASPHALT HAS BEEN PAVED AND PRIOR TO INSTALLATION OF CENTERLINE RUMBLE STRIPS ARE INSTALLED.

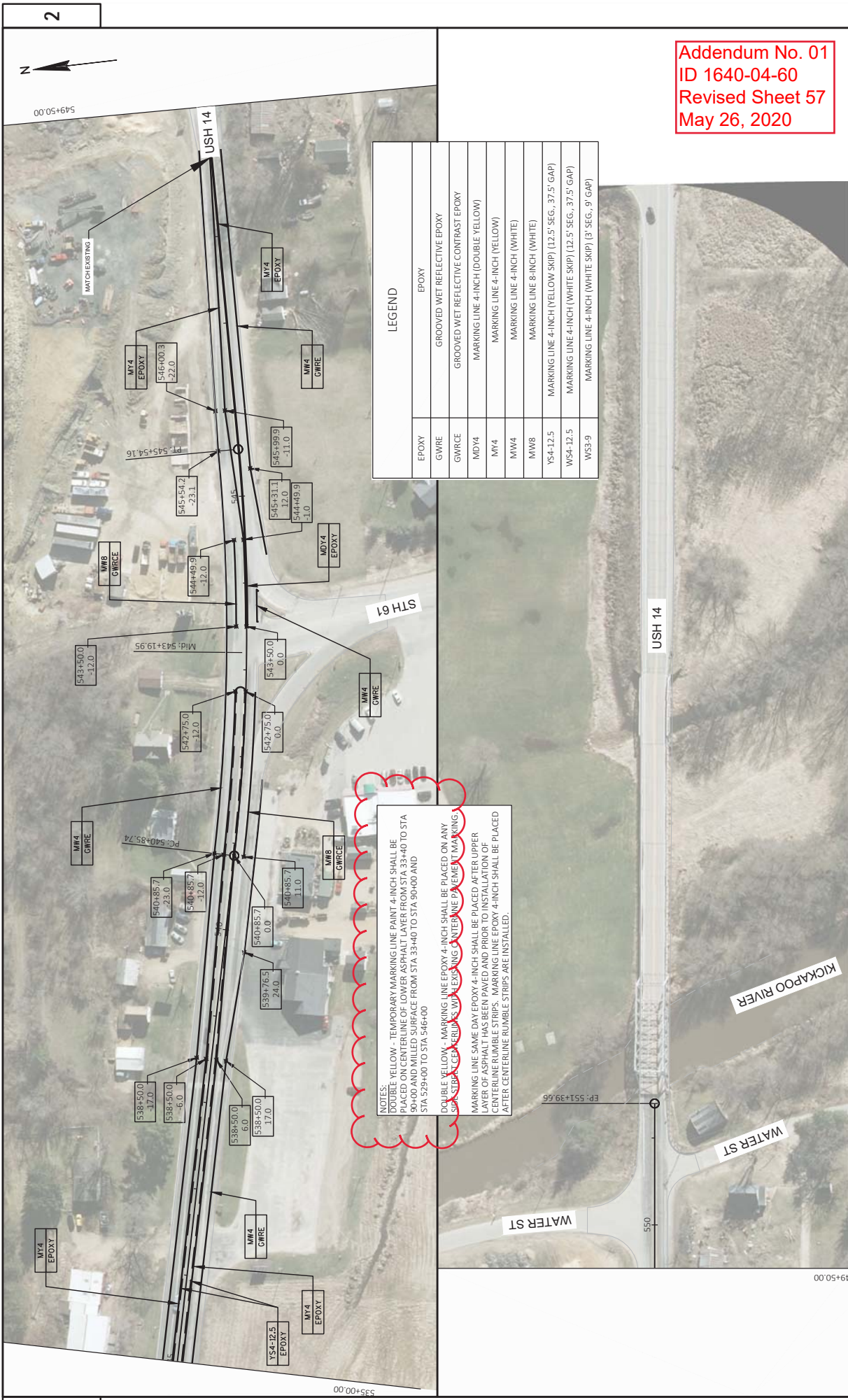
Addendum No. 01
 ID 1640-04-60
 Revised Sheet 55
 May 26, 2020



LEGEND	
EPOXY	EPOXY
GWRE	GROOVED WET REFLECTIVE EPOXY
GWRC	GROOVED WET REFLECTIVE CONTRAST EPOXY
MDY4	MARKING LINE 4-INCH (DOUBLE YELLOW)
MY4	MARKING LINE 4-INCH (YELLOW)
MW4	MARKING LINE 4-INCH (WHITE)
MW8	MARKING LINE 8-INCH (WHITE)
YS4-12.5	MARKING LINE 4-INCH (YELLOW SKIP) (12.5' SEG., 37.5' GAP)
WS4-12.5	MARKING LINE 4-INCH (WHITE SKIP) (12.5' SEG., 37.5' GAP)
WS3-9	MARKING LINE 4-INCH (WHITE SKIP) (3' SEG., 9' GAP)

NOTES:
 DOUBLE YELLOW - TEMPORARY MARKING LINE PAINT 4-INCH SHALL BE PLACED ON CENTERLINE OF LOWER ASPHALT LAYER FROM STA 33+40 TO STA 90+00 AND MILLED SURFACE FROM STA 33+40 TO STA 90+00 AND STA 529+00 TO STA 546+00
 DOUBLE YELLOW - MARKING LINE EPOXY 4-INCH SHALL BE PLACED ON ANY SPREADS OF CURBS AND EXISTING WATER LINE PAVEMENT MARKING
 MARKING LINE SAME DAY EPOXY 4-INCH SHALL BE PLACED AFTER UPPER LAYER HAS BEEN PAVED AND THE CURB OR INSTALLATION OF LATERAL RUMBLE STRIPS HAS BEEN COMPLETED. THE 4-INCH SHALL BE PLACED AFTER CENTERLINE RUMBLE STRIPS ARE INSTALLED.

Addendum No. 01
 ID 1640-04-60
 Revised Sheet 56
 May 26, 2020



LEGEND

EPOXY	EPOXY
GWRE	GROOVED WET REFLECTIVE EPOXY
GWRC	GROOVED WET REFLECTIVE CONTRAST EPOXY
MDY4	MARKING LINE 4-INCH (DOUBLE YELLOW)
MY4	MARKING LINE 4-INCH (YELLOW)
MW4	MARKING LINE 4-INCH (WHITE)
MW8	MARKING LINE 8-INCH (WHITE)
YS4-12.5	MARKING LINE 4-INCH (YELLOW SKIP) [12.5' SEG., 37.5' GAP]
WS4-12.5	MARKING LINE 4-INCH (WHITE SKIP) [12.5' SEG., 37.5' GAP]
WS3-9	MARKING LINE 4-INCH (WHITE SKIP) [3' SEG., 9' GAP]

NOTES:
 1. TEMPORARY MARKING LINE PAINT 4-INCH SHALL BE PLACED ON CENTERLINE OF LOWER ASPHALT LAYER FROM STA 334+40 TO STA 94+00 AND MILED SURFACE FROM STA 334+40 TO STA 94+00 AND STA 529+00 TO STA 546+00
 2. DOUBLE YELLOW - MARKING LINE EPOXY 4-INCH SHALL BE PLACED ON ANY SPREADS AND CENTERLINE WITH EXISTING CENTERLINE PAVEMENT MARKING
 3. MARKING LINE SAME DAY EPOXY 4-INCH SHALL BE PLACED AFTER UPPER LAYER OF ASPHALT HAS BEEN PAVED AND PRIOR TO INSTALLATION OF CENTERLINE RUMBLE STRIPS. MARKING LINE EPOXY 4-INCH SHALL BE PLACED AFTER CENTERLINE RUMBLE STRIPS ARE INSTALLED.

MARKING LINE ITEMS

STATION - STATION	LOCATION	STATION - STATION	LOCATION	STATION - STATION	LOCATION	STATION - STATION	LOCATION
646.1020	EPOXY REFLECTIVE EPOXY 4-INCH WHITE	646.1545	GROoved WET REF CONTRAST EPOXY 8-INCH WHITE	646.3545	GROoved WET REF CONTRAST EPOXY 8-INCH WHITE	649.0105	TEMPORARY PAINT 4-INCH YELLOW
646.1040	GROoved WET REFLECTIVE EPOXY 4-INCH WHITE	646.4520	SAME DAY EPOXY 4-INCH YELLOW	649.0105	TEMPORARY PAINT 4-INCH YELLOW		
TOTALS	100,300	2,425	86,675	1,270	26,040		

646.1020 EPOXY REFLECTIVE EPOXY 4-INCH WHITE L/F 86,675

646.1545 GROoved WET REF CONTRAST EPOXY 8-INCH WHITE L/F 2,425

646.3545 GROoved WET REF CONTRAST EPOXY 8-INCH WHITE L/F 1,270

649.0105 TEMPORARY PAINT 4-INCH YELLOW L/F 26,040

TOTALS 100,300 2,425 86,675 1,270 26,040

** TEMPORARY PAINT 4-INCH INCLUDED DOUBLE YELLOW ON LOWER LAYER FROM STA 33+40 TO STA 90+00 AND MILLED SURFACE FROM 33+40 TO 90+00 AND STA 529+00 TO STA 946+00

MOVING SIGNS ITEMS

STATION - STATION	LOCATION	STATION - STATION	LOCATION	STATION - STATION	LOCATION	STATION - STATION	LOCATION
638.2102	MOVING SIGNS TYPE II EACH						
0+00 - 438+00	5 GUARDRAIL SECTIONS						
TOTALS	5						

LOCATING NO-PASSING ZONES

STATION - STATION	LOCATION	STATION - STATION	LOCATION	STATION - STATION	LOCATION	STATION - STATION	LOCATION
648.0100	LOCATING NO-PASSING ZONES						
33+40 - 546+00							
TOTAL	9,300						

CONSTRUCTION STAKING ITEMS

STATION - STATION	LOCATION	STATION - STATION	LOCATION	STATION - STATION	LOCATION	STATION - STATION	LOCATION
650.8000	RESURFACING REFERENCE						
650.9910	SUPPLEMENTAL CONTROL						
33+40 - 546+00	49,129						
TOTALS	49,129						

SAWING PAVEMENT ITEMS

STATION - STATION	LOCATION	STATION - STATION	LOCATION	STATION - STATION	LOCATION	STATION - STATION	LOCATION
690.0150	ASPHALT						
210	MAINLINE						
390	SIDESTREETS						
600	DRIVEWAYS						
TOTALS	1,200						

TRAFFIC CONTROL ITEMS

STATION - STATION	LOCATION	STATION - STATION	LOCATION	STATION - STATION	LOCATION	STATION - STATION	LOCATION
643.0300	DRUMS						
3,000							
643.0420	BARRICADES TYPE III						
120							
643.0900	TRAFFIC CONTROL SIGNS						
3,000							
643.1050	TRAFFIC CONTROL SIGNS						
28							
643.5	TRAFFIC CONTROL EACH						
1							
TOTALS	3,000	120	3,000	28	1		

EROSION MAT CLASS I TYPE A

STATION	LOCATION	COMMON EXCAVATION	FILL (1.25)	TOPSOL SY	SEED MIX 60 LBS	FERTILIZER TYPE B CWT	EROSION MAT CLASS I TYPE A SY
42+07 - 43+76	RT	94	18	210	3	0.1	210
48+66 - 50+36	RT	60	16	300	4	0.2	300
62+02 - 63+71	RT	0	144	320	5	0.2	320
65+83 - 67+62	LT	81	75	265	4	0.2	265
68+66 - 70+35	LT	3	232	350	5	0.2	350
71+58 - 72+85	RT	15	111	135	2	0.1	135
149+45 - 151+14	RT	123	4638	3635	55	2.6	3635
170+80 - 181+12	RT	107	99	555	8	0.4	555
184+79 - 186+48	RT	68	181	480	7	0.3	480
196+41 - 198+10	RT	64	106	440	6	0.3	440
209+70 - 213+81	LT	31	402	385	6	0.2	385
233+26 - 237+39	LT	3	212	455	6	0.3	455
258+81 - 260+49	RT	82	326	1525	22	1	1525
272+95 - 277+21	RT	1	248	320	5	0.2	320
282+51 - 283+44	RT	82	82	165	2	0.1	165
292+21 - 293+90	LT/RT	39	504	375	5	0.2	375
294+13 - 296+74	RT	1	757	830	12	0.6	830
300+13 - 301+82	RT	99	99	500	7	0.3	500
306+84 - 309+64	RT	4	696	430	6	0.3	430
308+31 - 310+01	LT	41	246	275	4	0.2	275
311+55 - 313+24	LT	21	433	405	6	0.3	405
312+64 - 314+32	RT	0	338	405	6	0.3	405
401+39 - 403+09	RT	62	143	350	5	0.2	350
407+75 - 409+43	RT	63	69	490	7	0.3	490
418+26 - 419+93	RT	118	59	560	8	0.4	560
478+79 - 480+49	LT/RT	95	117	840	12	0.5	840
482+18 - 484+09	LT/RT						

APPROXIMATE QUANTITIES FOR BARRIER SYSTEM GRADING SHAFTING FINISHING. FOR INFORMATIONAL PURPOSES ONLY

Addendum No. 01
ID 1640-04-60
Revised Sheet 60
May 26, 2020

PROJECT NO: 1640-04-60	HWY: USH 14	COUNTY: VERNON	MISCELLANEOUS QUANTITIES	PLANT SCALE: 1:1
TOTALS	3,000	120	3,000	28
PROJECT 1640-04-60			PLACE FORM SIGNS 7 DAYS PRIOR TO START	
FILE NAME: 032021_mtp.ppt				



Proposal Schedule of Items

Proposal ID: 20200609003 Project(s): 1640-04-60

Federal ID(s): WISC 2020331

SECTION: 0001 Contract Items

Alt Set ID: Alt Mbr ID:

Proposal Line Number	Item ID Description	Approximate Quantity and Units	Unit Price	Bid Amount
0062	642.5001 Field Office Type B	1.000 EACH	_____.	_____.
0064	643.0300 Traffic Control Drums	3,000.000 DAY	_____.	_____.
0066	643.0420 Traffic Control Barricades Type III	120.000 DAY	_____.	_____.
0068	643.0900 Traffic Control Signs	3,000.000 DAY	_____.	_____.
0070	643.1050 Traffic Control Signs PCMS	28.000 DAY	_____.	_____.
0072	643.5000 Traffic Control	1.000 EACH	_____.	_____.
0074	646.1020 Marking Line Epoxy 4-Inch	86,675.000 LF	_____.	_____.
0076	646.1040 Marking Line Grooved Wet Ref Epoxy 4-Inch	100,300.000 LF	_____.	_____.
0078	646.1545 Marking Line Grooved Wet Ref Contrast Epoxy 4-Inch	2,425.000 LF	_____.	_____.
0080	646.3545 Marking Line Grooved Wet Ref Contrast Epoxy 8-Inch	1,270.000 LF	_____.	_____.
0082	646.4520 Marking Line Same Day Epoxy 4-Inch	86,675.000 LF	_____.	_____.
0084	648.0100 Locating No-Passing Zones	9.300 MI	_____.	_____.
0086	649.0105 Temporary Marking Line Paint 4-Inch	26,040.000 LF	_____.	_____.
0088	650.8000 Construction Staking Resurfacing Reference	49,129.000 LF	_____.	_____.
0090	650.9910 Construction Staking Supplemental Control (project) 01. 1640-04-60	LS	LUMP SUM	_____.

