



Wisconsin Department of Transportation

February 3, 2021

Division of Transportation Systems Development

Bureau of Project Development
4822 Madison Yards Way, 4th Floor South
Madison, WI 53705

Telephone: (608) 266-1631
Facsimile (FAX): (608) 266-8459

NOTICE TO ALL CONTRACTORS:

Proposal #15: 2984-32-71, WISC 2021 143
W Villard Avenue
Bridge Over Lincoln Creek P-40-894
Loc Str
Milwaukee County

Letting February 9, 2021

This is Addendum No. 02, which provides the following:

Plan Sheets:

Revised Plan Sheets	
Plan Sheet	Plan Sheet Title (brief description of changes to sheet)
21	Traffic Control (one note has been added to the legend)
22	Traffic Control (clear roadway width open to traffic has been updated)

Plan sheets

The following 8 ½ x 11-inch plan sheets are attached and made part of the plans for this proposal.
Revised: 21 & 22

The responsibility for notifying potential subcontractors and suppliers of these changes remains with the prime contractor.

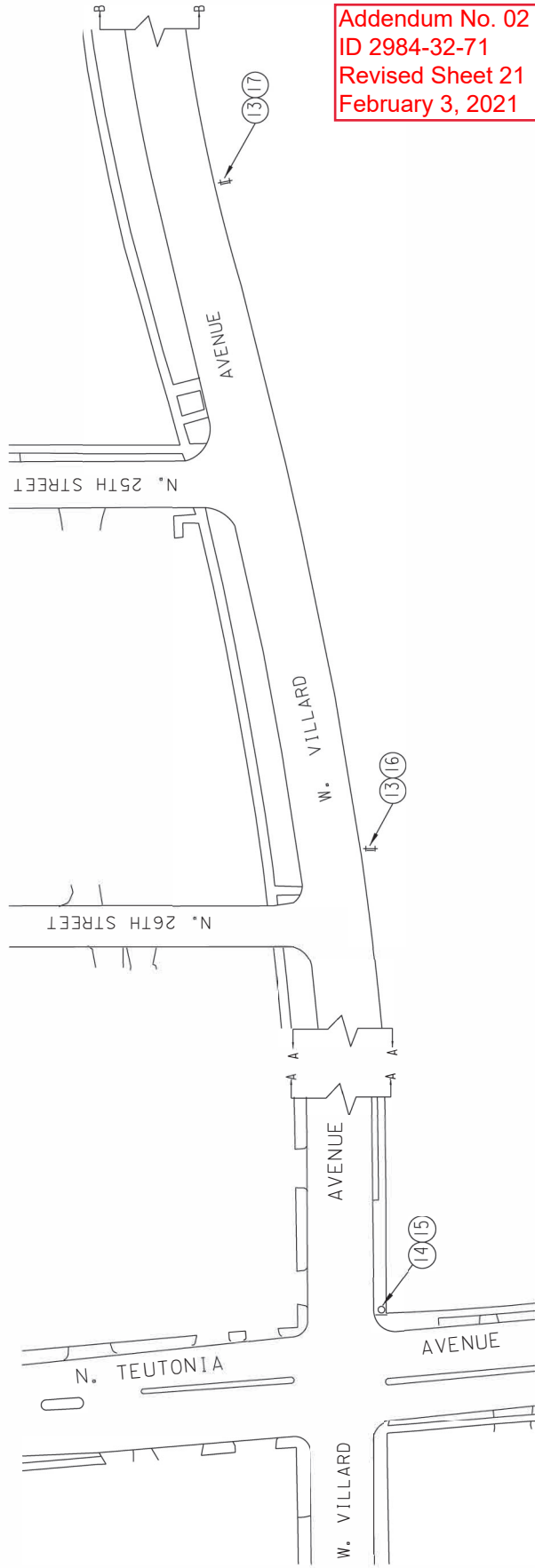
Sincerely,

Mike Coleman

Proposal Development Specialist
Proposal Management Section

END OF ADDENDUM

STAGE I



Addendum No. 02
ID 2984-32-71
Revised Sheet 21
February 3, 2021

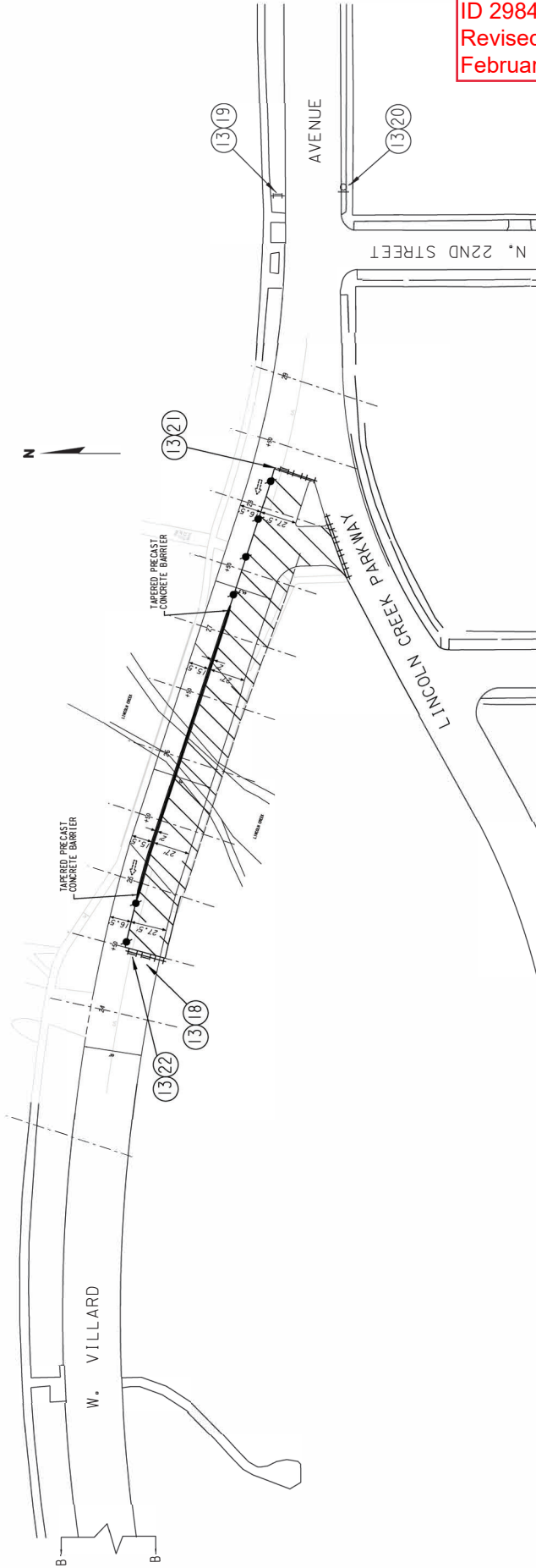
SHEET 1 OF 10

LEGEND

NOTE: ALL SIGNING SHALL BE THE CONTRACTORS RESPONSIBILITY. ALL SIGNS SHALL BE BANDED TO EXISTING UTILITY POLES UNLESS OTHERWISE NOTED. CONTRACTOR RESPONSIBLE FOR COVERING ALL CONFLICTING PAVEMENT MARKINGS. CONTRACTOR RESPONSIBLE FOR COVERING ALL SIGNS THAT ARE IN CONFLICT WITH TEMPORARY TRAFFIC CONTROL SIGNS. TRAFFIC CONTROL DEVICES MAY BE ADJUSTED TO FIT FIELD CONDITIONS.

STATE PROJECT NUMBER	2984-32-70	COUNTY	MILWAUKEE	SCALE	FEET 0' 80'	SHEET NO.	21	E
----------------------	------------	--------	-----------	-------	-------------	-----------	----	---

STAGE I



Addendum No. 02
 ID 2984-32-71
 Revised Sheet 22
 February 3, 2021

SHEET 2 OF 10

LEGEND

--	--	--	--	--	--	--	--	--	--	--	--	--	--	--	--	--	--	--	--	--	--	--	--	--	--	--	--	--	--	--	--	--	--	--	--	--	--	--	--	--	--	--	--	--	--	--	--	--	--	--	--	--	--	--	--	--	--	--	--	--	--	--	--	--	--	--	--	--	--	--	--	--	--	--	--	--	--	--	--	--	--	--	--	--	--	--	--	--	--	--	--	--	--	--	--	--	--	--	--	--	--	--

NOTE: ALL SIGNING SHALL BE THE CONTRACTORS RESPONSIBILITY. ALL SIGNS SHALL BE BANNED TO EXISTING UTILITY POLES UNLESS OTHERWISE NOTED. CONTRACTOR RESPONSIBLE FOR COVERING ALL CONFLICTING PAVEMENT MARKINGS. CONTRACTOR RESPONSIBLE FOR COVERING ALL SIGNS THAT ARE IN CONFLICT WITH TEMPORARY TRAFFIC CONTROL SIGNS. TRAFFIC CONTROL DEVICES MAY BE ADJUSTED TO FIT FIELD CONDITIONS.

STATE PROJECT NUMBER 2984-32-70
 COUNTY: MILWAUKEE
 HWY: VILLARD AVE
 SCALE: FEET 80'
 SHEET NO: 22

