



# Wisconsin Department of Transportation

January 28, 2021

## Division of Transportation Systems Development

Bureau of Project Development  
4822 Madison Yards Way, 4<sup>th</sup> Floor South  
Madison, WI 53705

Telephone: (608) 266-1631  
Facsimile (FAX): (608) 266-8459

### NOTICE TO ALL CONTRACTORS:

**Proposal #22: 6140-02-71, WISC 2021 179**  
**Wisconsin Dells - Adams**  
**Columbia Co Line to Golden Avenue**  
**STH 13**  
**Adams County**

### Letting of February 9, 2021

This is Addendum No. 01, which provides for the following:

#### Special Provisions:

Revised Special Provisions	
Article No.	Description
4	Traffic

Added Special Provisions	
Article No.	Description
13	Other Work

#### Schedule of Items:

Revised Bid Item Quantities					
Bid Item	Item Description	Unit	Old Quantity	Revised Quantity	Proposal Total
649.0105	Temporary Marking Line Paint 4-Inch	LF	69,430	-35,295	34,135

Added Bid Item Quantities					
Bid Item	Item Description	Unit	Old Quantity	Revised Quantity	Proposal Total
450.4000	HMA Cold Weather Paving	Ton	0	735	735
649.0150	Temporary Marking Line Removable Tape 4-Inch	LF	0	35,295	35,295

**Plan Sheets:**

<b>Revised Plan Sheets</b>	
<b>Plan Sheet</b>	<b>Plan Sheet Title (brief description of changes to sheet)</b>
19	Traffic Control – Typical Sections (Clarified where the temporary marking line removable tape 4-inch needs to be placed)
20	Traffic Control – Typical Sections (Clarified where the temporary marking line removable tape 4-inch needs to be placed)
25	Traffic Control - Stage 2 (Revised the legend to include the temporary marking line removable tape 4-inch)
26	Traffic Control - Stage 2 (Revised the legend to include the temporary marking line removable tape 4-inch)
27	Traffic Control - Stage 2 (Revised the legend to include the temporary marking line removable tape 4-inch)
28	Traffic Control - Stage 2 (Revised the legend to include the temporary marking line removable tape 4-inch)
31	Miscellaneous Quantity Sheets (Revised the asphaltic items table to include the added HMA cold weather paving quantity)
33	Miscellaneous Quantity Sheets (Revised the temporary marking table to include the updated quantity for temporary marking line paint 4-inch and the added quantity for temporary marking line removable tape 4-inch)

The responsibility for notifying potential subcontractors and suppliers of these changes remains with the prime contractor.

Sincerely,

*Mike Coleman*

Proposal Development Specialist  
Proposal Management Section

**ADDENDUM NO. 01**

**6140-02-71**

**January 28, 2021**

**Special Provisions**

**4. Traffic.**

*Replace paragraph one under section titled **Stage 3** with the following:*

Construct STH 13 travel lanes and shoulders between Stations 108+64 'NB' and 150+40 'NB' and between Stations 236+35 'NB' and 240+01 'NB' using single lane closure, moving operation with flaggers. Maintain a minimum 12-foot wide lane of traffic at all times. Return all roads to two lanes of through traffic at the end of each workday. During flagging operations, do not hold vehicles in queue longer than 15 minutes.

*Insert the following immediately after the end of section titled **Stage 3**:*

The following work will be allowed to be completed outside the main traffic control stages listed above. Provide the proper traffic control per the appropriate standard detail drawings or as approved by the engineer when completing the work.

- Curb and gutter
- Sidewalk
- Beam guard upgrades and extensions
- Shouldering
- Restoration

**13. Other Work.**

The following project is currently scheduled to be constructed during the 2021 construction season:

1430-01-77  
STH 82, Adams County  
Mauston – IH 39  
STH 13 To CTH B  
Concrete Pavement replacement project  
Let date – February 9, 2021

Cooperation with this work is required per 105.5.2 Cooperation Between Contractors. Coordinate work zone traffic control and work operations, as necessary. Modifications to the traffic control plan may be required by the engineer to maintain safety.

**Schedule of Items**

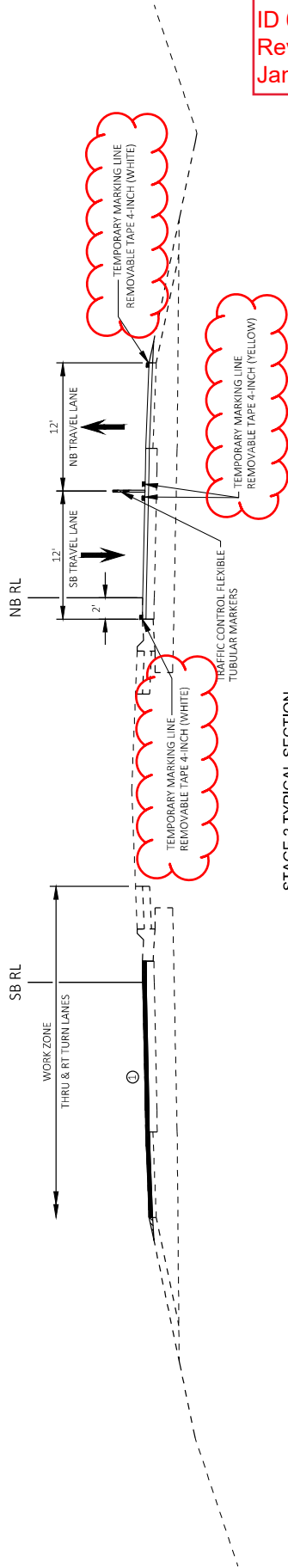
Attached, dated January 28, 2021, are the revised Schedule of Items Pages 4 and 5.

**Plan Sheets**

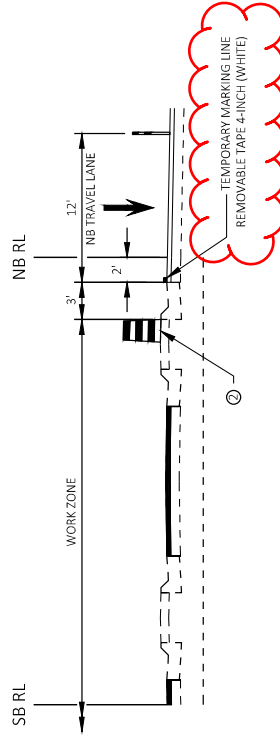
The following 8½ x 11-inch sheets are attached and made part of the plans for this proposal:  
Revised: 19, 20, 25, 26, 27, 28, 31 and 33.

END OF ADDENDUM

Addendum No. 01  
 ID 6140-02-71  
 Revised Sheet 19  
 January 28, 2021



**STAGE 2 TYPICAL SECTION**  
 STH 13  
 STA 150+40 NB TO STA 236+35 NB



**STAGE 2 TYPICAL SECTION - SB LEFT TURN LANES**  
 STH 13

**LEGEND**



TRAFFIC CONTROL DRUM



DIRECTION OF THRU TRAFFIC

**NOTES**

- ① BEGIN NB MILLING AND PAVING FOR STAGE 1 AT APPROXIMATELY STA 150+40.0.
- ② END NB MILLING AND PAVING FOR STAGE 1 AT APPROXIMATELY STA 236+35.0.
- ③ PLACE DRUMS WHERE CONCRETE MEDIUM IS PAVED FULL WIDTH.

PROJECT NO: 6140-02-71

HWY: STH 13

COUNTY: ADAMS

TRAFFIC CONTROL - TYPICAL SECTIONS

SHEET 19

PLOT BY: ANGELA DOCKEY

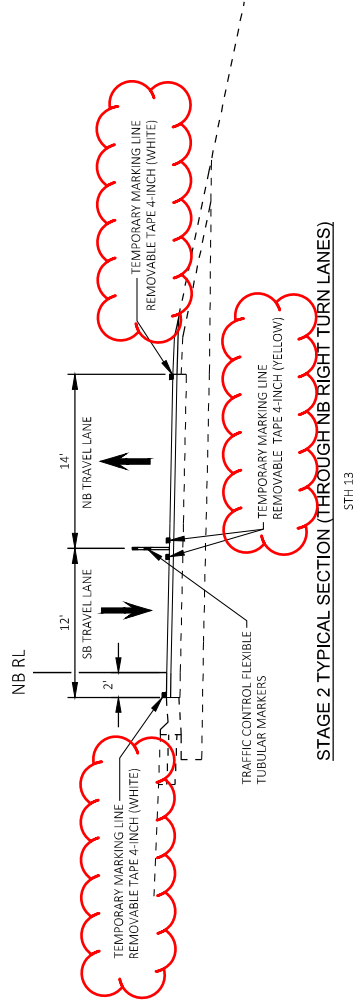
FILE NAME: X:\PROJECTS\ADAMS\6140-02-01\_STH\_13\_CTY\_LINE-GOLDER AVE\DESIGN\CADD\SHEETS\PLAN\CONSTRUCTION STAGING.DWG

PLOT DATE: 1/26/2021 10:28 AM

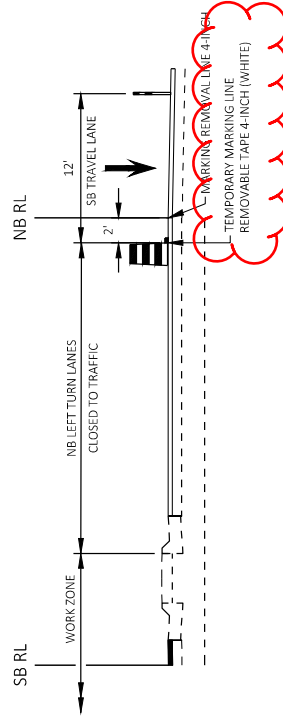
PLOT SCALE: 1 IN=10 FT

WISDOT/CADD SHEET 12

Addendum No. 01  
ID 6140-02-71  
Revised Sheet 20  
January 28, 2021



STAGE 2 TYPICAL SECTION (THROUGH NB RIGHT TURN LANES)  
STH 13



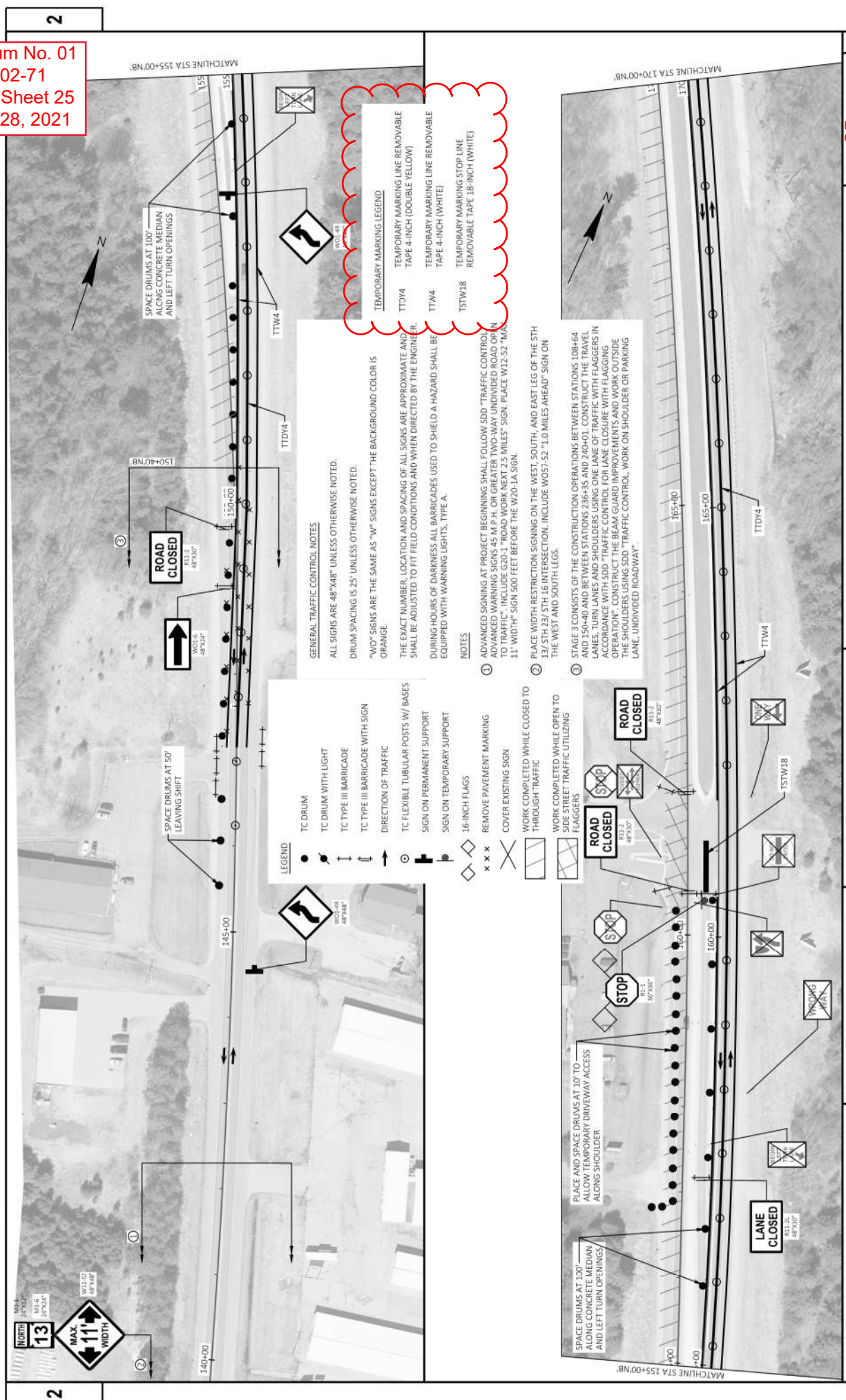
STAGE 2 TYPICAL SECTION - NB LEFT TURN LANES  
STH 13

**LEGEND**

☐ TRAFFIC CONTROL DRUM

↔ DIRECTION OF THRU TRAFFIC

Addendum No. 01  
 ID 6140-02-71  
 Revised Sheet 25  
 January 28, 2021



**TEMPORARY MARKING LEGEND**

TTD#4 TEMPORARY MARKING LINE REMOVABLE TAPE 4-INCH (DOUBLE YELLOW)

TTW#4 TEMPORARY MARKING LINE REMOVABLE TAPE 4-INCH (WHITE)

TSTW#18 TEMPORARY MARKING STOP LINE REMOVABLE TAPE 18-INCH (WHITE)

**GENERAL TRAFFIC CONTROL NOTES**

ALL SIGNS ARE 48"X48" UNLESS OTHERWISE NOTED.

DRUM SPACING IS 25' UNLESS OTHERWISE NOTED.

"W" SIGNS ARE THE SAME AS "W" SIGNS EXCEPT THE BACKGROUND COLOR IS ORANGE.

THE EXACT NUMBER, LOCATION AND SPACING OF ALL SIGNS ARE APPROXIMATE AND SHALL BE ADJUSTED TO FIT FIELD CONDITIONS AND WHEN DIRECTED BY THE ENGINEER.

DURING HOURS OF DARKNESS ALL BARRICADES USED TO SHIELD A HAZARD SHALL BE EQUIPPED WITH WARNING LIGHTS, TYPE A.

**LEGEND**

- TC DRUM
- TC DRUM WITH LIGHT
- ⊥ TC TYPE III BARRICADE
- ⇄ TC TYPE III BARRICADE WITH SIGN
- ⇄ DIRECTION OF TRAFFIC
- ⊥ TC FLEXIBLE TUBULAR POSTS W/ BASES
- ⊥ SIGN ON PERMANENT SUPPORT
- ⊥ SIGN ON TEMPORARY SUPPORT
- ◇ 16-INCH FLAGS
- xxx REMOVE PAVEMENT MARKING
- ⊗ COVER EXISTING SIGN
- ▭ WORK COMPLETED WHILE CLOSED TO THROUGH TRAFFIC
- ▭ WORK COMPLETED WHILE OPEN TO SIDE STREET TRAFFIC UTILIZING FLAGGERS

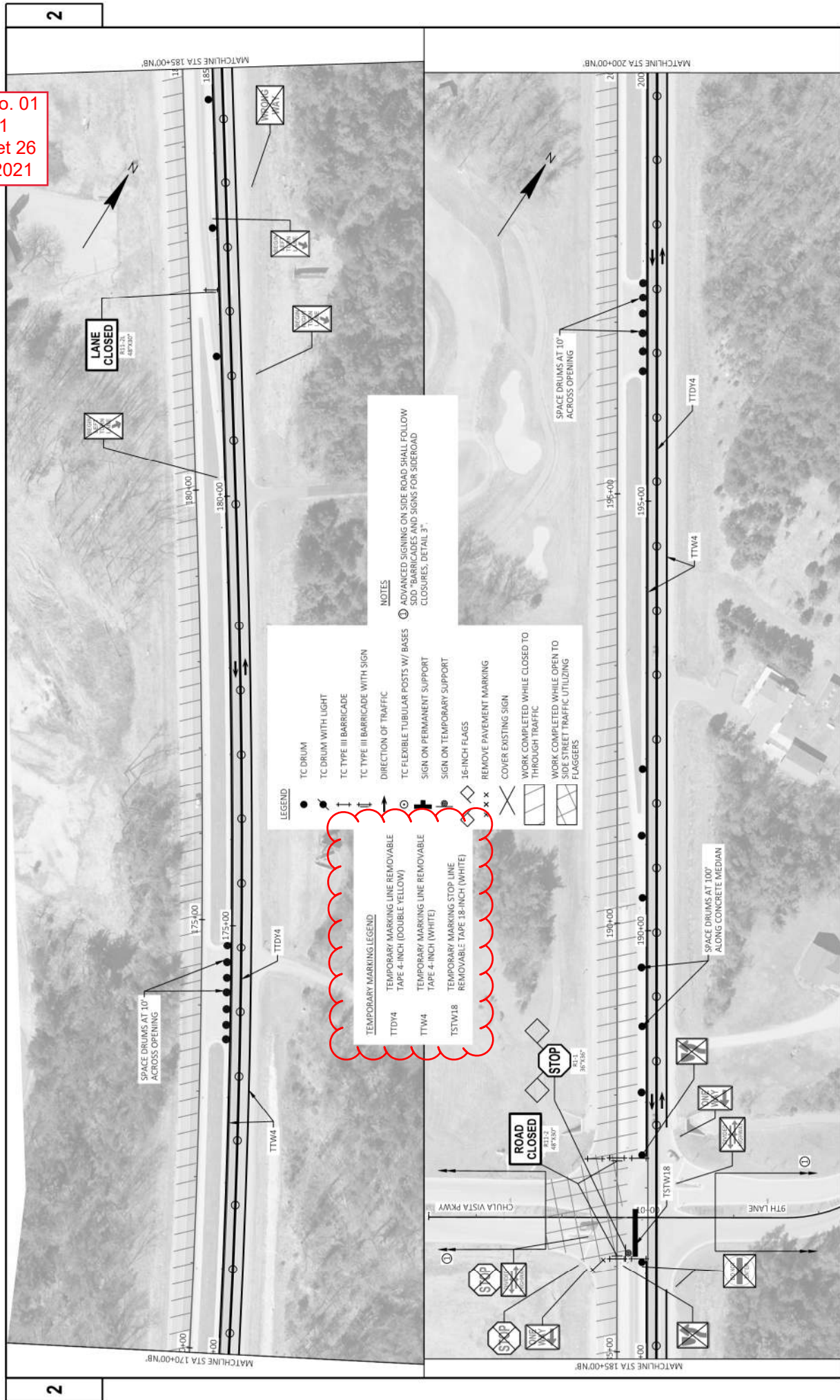
**NOTES**

① ADVANCED SIGNING AT PROJECT BEGINNING SHALL FOLLOW SDD "TRAFFIC CONTROL, ADVANCED WARNING SIGNS 45 M.P.H. OR GREATER TWO-WAY UNDIVIDED ROAD OPEN TO TRAFFIC". INCLUDE 620-1 "ROAD WORK NEXT 2.5 MILES" SIGN, PLACE W12-52 "MAX 11' WIDTH" SIGN 500 FEET BEFORE THE W20-LA SIGN.

② PLACE WIDTH RESTRICTION SIGNING ON THE WEST, SOUTH, AND EAST LEG OF THE STH 13/ STH 23/ STH 16 INTERSECTION. INCLUDE W057-52 "1.0 MILES AHEAD" SIGN ON THE WEST AND SOUTH LEGS.

③ STAGE 3 CONSISTS OF THE CONSTRUCTION OPERATIONS BETWEEN STATIONS 108+64 AND 150+40 AND BETWEEN STATIONS 236+35 AND 240+01. CONSTRUCT THE TRAVEL LANES, TURN LANES AND SHOULDERS USING ONE LANE OF TRAFFIC WITH FLAGGERS IN ACCORDANCE WITH SDD "TRAFFIC CONTROL FOR LANE CLOSURE WITH FLAGGING OPERATION". CONSTRUCT THE BEAM GUARD IMPROVEMENTS AND WORK OUTSIDE THE SHOULDERS USING SDD "TRAFFIC CONTROL, WORK ON SHOULDER OR PARKING LANE, UNDIVIDED ROADWAY".

Addendum No. 01  
 ID 6140-02-71  
 Revised Sheet 26  
 January 28, 2021



**LEGEND**

- TC DRUM
- TC DRUM WITH LIGHT
- ▬ TC TYPE III BARRICADE
- ▬ TC TYPE III BARRICADE WITH SIGN
- ↑ DIRECTION OF TRAFFIC
- TC FLEXIBLE TUBULAR POSTS W/ BASES
- ▬ SIGN ON PERMANENT SUPPORT
- ▬ SIGN ON TEMPORARY SUPPORT
- ◇ 16-INCH FLAGS
- ✕ REMOVE PAVEMENT MARKING
- ✕ COVER EXISTING SIGN
- ▬ WORK COMPLETED WHILE CLOSED TO THROUGH TRAFFIC
- ▬ WORK COMPLETED WHILE OPEN TO SIDE STREET TRAFFIC UTILIZING FLAGGERS

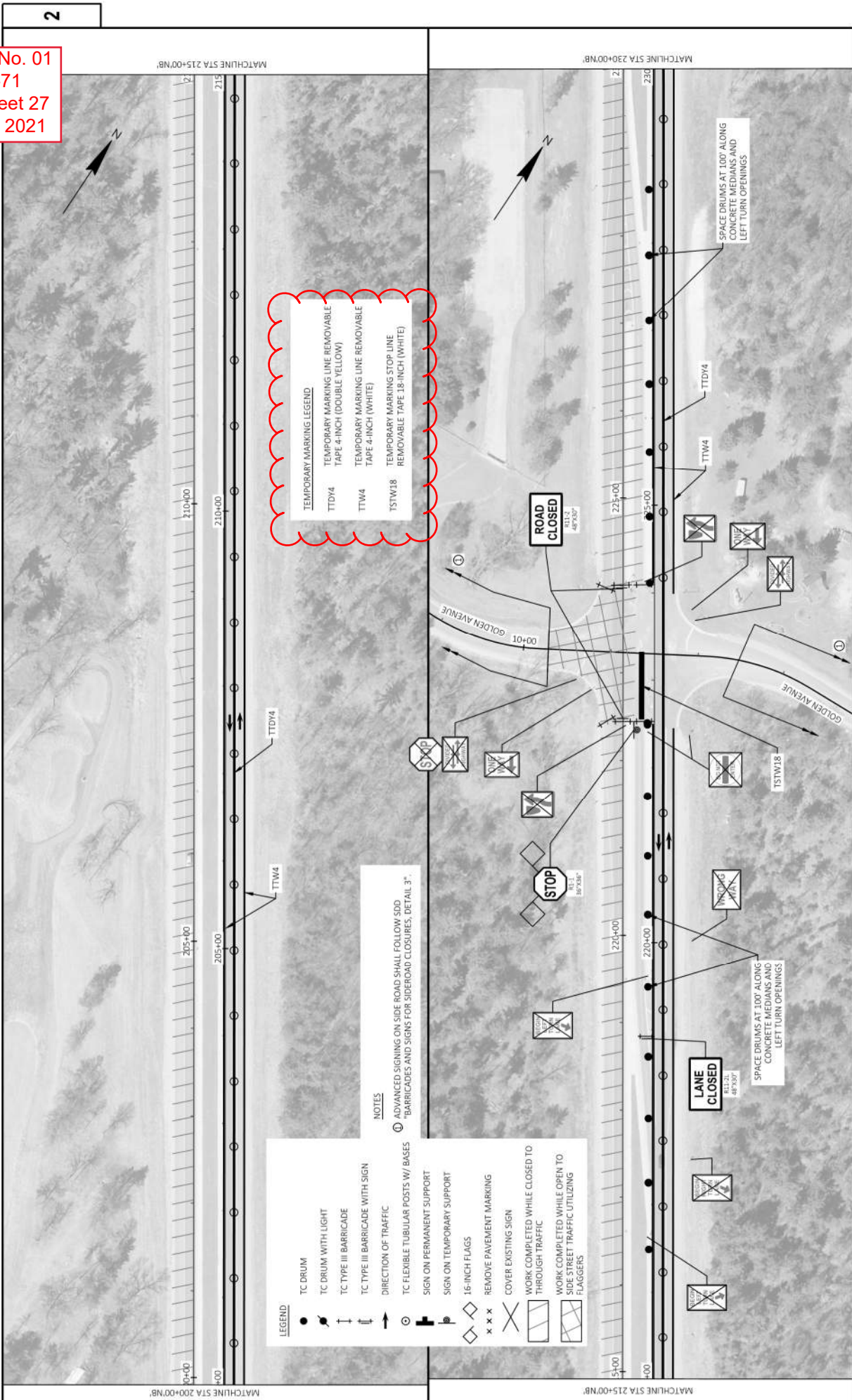
**TEMPORARY MARKING LEGEND**

- TTD14 TEMPORARY MARKING LINE REMOVABLE TAPE 4-INCH (DOUBLE YELLOW)
- TTW4 TEMPORARY MARKING LINE REMOVABLE TAPE 4-INCH (WHITE)
- TSTW18 TEMPORARY MARKING STOP LINE REMOVABLE TAPE 18-INCH (WHITE)

**NOTES**

- ① ADVANCED SIGNING ON SIDE ROAD SHALL FOLLOW SDD BARRICADES AND SIGNS FOR SIDEROAD CLOSURES, DETAIL 3'.

Addendum No. 01  
 ID 6140-02-71  
 Revised Sheet 27  
 January 28, 2021



**TEMPORARY MARKING LEGEND**

TTDV4	TEMPORARY MARKING LINE REMOVABLE TAPE 4-INCH (DOUBLE YELLOW)
TTW4	TEMPORARY MARKING LINE REMOVABLE TAPE 4-INCH (WHITE)
TSTW18	TEMPORARY MARKING STOP LINE REMOVABLE TAPE 1.8-INCH (WHITE)

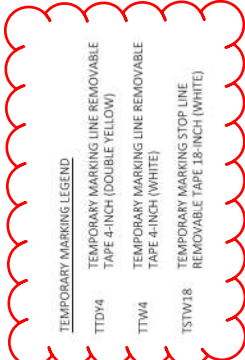
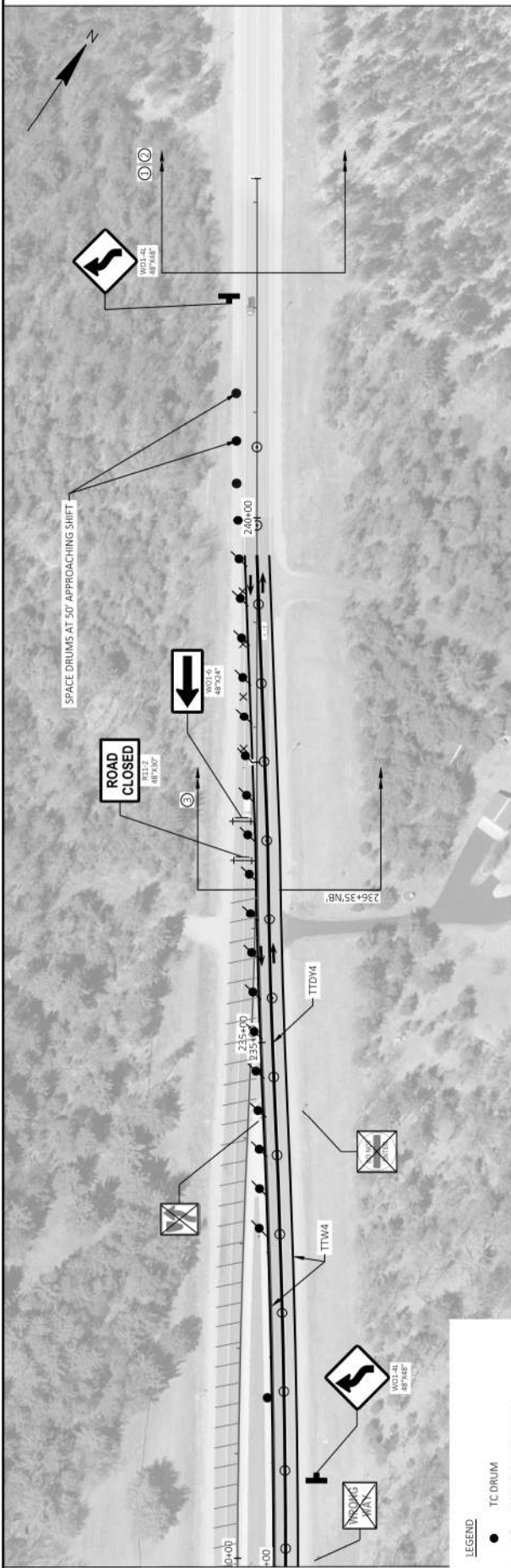
**LEGEND**

- TC DRUM
- TC DRUM WITH LIGHT
- ↑ TC TYPE III BARRICADE
- ↓ TC TYPE III BARRICADE WITH SIGN
- DIRECTION OF TRAFFIC
- TC FLEXIBLE TUBULAR POSTS W/ BASES
- SIGN ON PERMANENT SUPPORT
- SIGN ON TEMPORARY SUPPORT
- ◇ 16-INCH FLAGS
- xxx REMOVE PAVEMENT MARKING
- ⊗ COVER EXISTING SIGN
- ▨ WORK COMPLETED WHILE CLOSED TO THROUGH TRAFFIC
- ▩ WORK COMPLETED WHILE OPEN TO SIDE STREET TRAFFIC UTILIZING FLAGGERS

**NOTES**

- ① ADVANCED SIGNING ON SIDE ROAD SHALL FOLLOW SDD BARRICADES AND SIGNS FOR SIDEROAD CLOSURES, DETAIL 3".





**NOTES**

- ADVANCE SIGNING AT PROJECT ENDING SHALL FOLLOW SDD "TRAFFIC CONTROL, ADVANCED WARNING SIGNS 45' M.P.H. OR GREATER TWO-WAY UNDIVIDED ROAD OPEN TO TRAFFIC. INCLUDE GRASS AND WORK NEXT 1/2 MILES SIGN. PLACE W22-52 "MAX 11" WIDTH" SIGN 500 FEET BEFORE THE W20-1A SIGN.
- PLACE W12-52 "MAX 11" WIDTH" SIGN ON STH 13 JUST NORTH OF CTH 0. INCLUDE W057-52 "0.8 MILES AHEAD" SIGN. ALSO PLACE W12-52 SIGN WITH M3-3 "SOUTH" SIGN AND M1-6 "13" SIGN ON CTH 0.

- LEGEND**
- TC DRUM
  - ⬇ TC DRUM WITH LIGHT
  - ⬇ TC TYPE III BARRICADE
  - ⬇ TC TYPE III BARRICADE WITH SIGN
  - ⇄ DIRECTION OF TRAFFIC
  - ⊙ TC FLEXIBLE TUBULAR POSTS W/ BASES
  - ⬇ SIGN ON PERMANENT SUPPORT
  - ⬇ SIGN ON TEMPORARY SUPPORT
  - ⬇ 16-INCH FLAGS
  - ⊗ REMOVE PAVEMENT MARKING
  - ⊗ COVER EXISTING SIGN
  - ⊗ WORK COMPLETED WHILE CLOSED TO THROUGH TRAFFIC
  - ⊗ WORK COMPLETED WHILE OPEN TO SIDE STREET TRAFFIC UTILIZING FLAGGERS

Addendum No. 01  
ID 6140-02-71  
Revised Sheet 28  
January 28, 2021

PROJECT COMPLETION AND MAINTENANCE ITEMS

STATION TO STATION	SY	DESCRIPTION	UNIT	QUANTITY
108+64 - 240+01	1	213.0100.01 FINISHING ROADWAY (6140-02-71) EACH	EACH	1
ITEM TOTAL	1			1

BASE AGGREGATE ITEMS

STATION TO STATION	TON	DESCRIPTION	UNIT	QUANTITY
108+64 - 159+50	170	305.0110 BASE AGGREGATE DENSE 3/4-INCH	TON	170
159+50 - 211+50	180			180
211+50 - 240+01	100			100
ITEM TOTAL	450			450

ASPHALTIC ITEMS

STATION TO STATION	TON	DESCRIPTION	UNIT	QUANTITY
108+64 - 150+40	204	450.4000 ASPHALTIC SURFACE	TON	204
150+40 - 236+35	735			735
STAGE 1 SUBTOTAL	939			939
108+64 - 150+40	161	HMA COLD WEATHER PAVING	TON	161
150+40 - 240+01	13			13
UNINDISTRIBUTED	174			174
ITEM TOTAL	600			600

CONCRETE REMOVAL ITEMS

STATION TO STATION	LOCATION	SY	DESCRIPTION	UNIT	QUANTITY
167+17'58" - 169+10'NB	RT	5	204.0150 REMOVING CONCRETE CURB & GUTTER	SY	5
173+01'NB - 205+81'5B	RT	5			5
210+98'5B - 213+40'NB	LT	10			10
229+72'5B - 230+78'NB	LT	3			3
ITEM TOTAL		65			65

BEAM GUARD SYSTEM ITEMS

STATION TO STATION	LOCATION	CLASS	LF	DESCRIPTION	UNIT	QUANTITY
108+64'NB - 109+04'NB	LT		75	614.0400 STEEL PLATE BEAM GUARD	LF	75
108+64'NB - 109+43'NB	RT		50			50
163+23'NB - 167+67'NB	RT		150			150
165+83'5B - 169+10'5B	LT		38			38
ITEM TOTAL			350			350

MISCELLANEOUS QUANTITIES

STATION TO STATION	LF	DESCRIPTION	UNIT	QUANTITY
108+64'NB - 109+04'NB	75	614.0370 ENERGY ABSORBING TERMINAL EACH	EACH	75
108+64'NB - 109+43'NB	50	614.0370		50
163+23'NB - 167+67'NB	150	614.0370		150
165+83'5B - 169+10'5B	38	614.0370		38
ITEM TOTAL	350			350

Addendum No. 01  
ID 6140-02-71  
Revised Sheet 31  
January 28, 2021

NOTE: ALL STATIONS ARE NORTHBOUND (NB) UNLESS OTHERWISE NOTED

NOTE: ALL ITEMS AND QUANTITIES ON THIS SHEET ARE FOR ENGINEER ESTIMATE CATEGORY 0010 UNLESS OTHERWISE NOTED

Addendum No. 01  
ID 6140-02-71  
Revised Sheet 33  
January 28, 2021

**TRAFFIC CONTROL**

STATION TO STATION	DRUMS DAY	643.0420 BARRICADES TYPE III DAY	643.0500 FLEXIBLE TUBULAR MARKER POSTS EACH	643.0600 FLEXIBLE TUBULAR MARKER BASES EACH	643.0705 WARNING LIGHTS TYPE A DAY	643.0715 WARNING LIGHTS TYPE C DAY	643.0900 SIGNS DAY	NUMBER OF CYCLES	NUMBER OF SIGNS	COVERING SIGNS TYPE II EACH	643.0920 EACH	16-INCH FLAGS* EACH PAIR
108+64 - 240+01	3,975	555	190	190	190	195	840	1	33	33	1	2
STAGE 1 SUBTOTAL		555	190	190	195	195	840	1	33	33	1	2
108+64 - 240+01	2,740	560	-	-	798	350	742	1	25	25	-	3
STAGE 2 SUBTOTAL	2,740	560	-	-	798	350	742	1	25	25	-	3
108+64 - 240+01	108	-	-	-	-	-	288	-	-	-	-	-
STAGE 3 SUBTOTAL	108	-	-	-	-	-	288	-	-	-	-	-
ITEM TOTAL	6,323	1,115	190	190	1,518	545	1,870	-	58	58	1	-

\* INCIDENTAL TO TRAFFIC CONTROL SIGN

**PAVEMENT MARKING ITEMS**

STATION TO STATION	MARKING LINE	646.4520	646.4620	646.6120	646.702	646.7120
108+64 - 159+50	GROOVED WET REF (YELLOW)	847	75	-	74	191
159+50 - 211+50	EPOXY 4-INCH (WHITE)	2,915	-	84	113	122
211+50 - 240+01	EPOXY 8-INCH (WHITE)	1,209	540	59	56	140
ITEM TOTAL		4,971	75	143	243	453

**TEMPORARY MARKING**

STATION TO STATION	LINE PAINT 4-INCH LF	649.0105	649.0150	649.0850
108+64 - 240+01	LINE REMOVABLE TAPE 4-INCH LF	34,135	-	120
STAGE 1 SUBTOTAL		34,135	-	120
108+64 - 240+01	STOP LINE REMOVABLE TAPE 1.8-INCH LF	35,295	-	195
STAGE 2 SUBTOTAL		35,295	-	195
ITEM TOTAL		34,135	35,295	315

**MARKING REMOVAL LINE**

STATION TO STATION	MARKING LINE	646.9000	646.9100
108+64 - 240+01	4-INCH LF	16,500	1,005
STAGE 1 SUBTOTAL		16,500	1,005
108+64 - 240+01	8-INCH LF	1,051	0
STAGE 2 SUBTOTAL		1,051	0
ITEM TOTAL		17,551	1,005

**CONSTRUCTION STAKING**

STATION TO STATION	RESURFACING SUPPLEMENTAL CONTROL (6140-02-71) LF	650.8000	650.9910.01
108+64 - 240+01	CURB & GUTTER REFERENCE CONTROL (6140-02-71) LF <td>13,137</td> <td>1</td>	13,137	1
ITEM TOTAL		13,137	1

NOTE: ALL STATIONS ARE NORTHBOUND (NB) UNLESS OTHERWISE NOTED

NOTE: ALL ITEMS AND QUANTITIES ON THIS SHEET ARE FOR ENGINEER ESTIMATE CATEGORY 0010 UNLESS OTHERWISE NOTED



Proposal Schedule of Items

Proposal ID: 20210209022 Project(s): 6140-02-71

Federal ID(s): WISC 2021179

SECTION: 0001 Contract Items

Alt Set ID: Alt Mbr ID:

Proposal Line Number	Item ID Description	Approximate Quantity and Units	Unit Price	Bid Amount
0098	646.3020 Marking Line Epoxy 8-Inch	4,971.000 LF	_____.	_____.
0100	646.4520 Marking Line Same Day Epoxy 4-Inch	3,080.000 LF	_____.	_____.
0102	646.4620 Marking Line Same Day Epoxy 8-Inch	75.000 LF	_____.	_____.
0104	646.6120 Marking Stop Line Epoxy 18-Inch	143.000 LF	_____.	_____.
0106	646.7020 Marking Diagonal Epoxy 6-Inch	243.000 LF	_____.	_____.
0108	646.7120 Marking Diagonal Epoxy 12-Inch	453.000 LF	_____.	_____.
0110	646.9000 Marking Removal Line 4-Inch	17,551.000 LF	_____.	_____.
0112	646.9100 Marking Removal Line 8-Inch	1,005.000 LF	_____.	_____.
0114	649.0105 Temporary Marking Line Paint 4-Inch	34,135.000 LF	_____.	_____.
0116	649.0850 Temporary Marking Stop Line Removable Tape 18-Inch	315.000 LF	_____.	_____.
0118	650.5500 Construction Staking Curb Gutter and Curb & Gutter	190.000 LF	_____.	_____.
0120	650.8000 Construction Staking Resurfacing Reference	13,137.000 LF	_____.	_____.
0122	650.9910 Construction Staking Supplemental Control (project) 01. 6140-02-71	LS	LUMP SUM	_____.
0124	690.0150 Sawing Asphalt	220.000 LF	_____.	_____.
0126	690.0250 Sawing Concrete	144.000 LF	_____.	_____.
0128	740.0440 Incentive IRI Ride	10,000.000 DOL	1.00000	10,000.00



Proposal Schedule of Items

Proposal ID: 20210209022 Project(s): 6140-02-71

Federal ID(s): WISC 2021179

SECTION: 0001 Contract Items

Alt Set ID: Alt Mbr ID:

Proposal Line Number	Item ID Description	Approximate Quantity and Units	Unit Price	Bid Amount
0130	ASP.1T0A On-the-Job Training Apprentice at \$5.00/HR	1,200.000 HRS	5.00000	6,000.00
0132	ASP.1T0G On-the-Job Training Graduate at \$5.00/HR	600.000 HRS	5.00000	3,000.00
0134	SPV.0090 Special 01. Salvage and Adjust Guardrail	50.000 LF	_____.	_____.
0136	450.4000 HMA Cold Weather Paving	735.000 TON	_____.	_____.
0138	649.0150 Temporary Marking Line Removable Tape 4-Inch	35,295.000 LF	_____.	_____.
<b>Section: 0001</b>			<b>Total:</b>	_____.
			<b>Total Bid:</b>	_____.

