



Wisconsin Department of Transportation

February 1, 2021

Division of Transportation Systems Development

Bureau of Project Development
4822 Madison Yards Way, 4th Floor South
Madison, WI 53705

Telephone: (608) 266-1631
Facsimile (FAX): (608) 266-8459

NOTICE TO ALL CONTRACTORS:

Proposal #24: 6414-00-79, WISC 2021 182
Village of Plover, Post Road
Springville Drive to Tommy's
Turnpike
Business 51
Portage County

6414-00-89
Village of Plover, Post Road
Springville Drive to Tommy's
Turnpike
Business 51, Local Utilities
Portage County

Letting of February 9, 2021

This is Addendum No. 02, which provides for the following:

Plan Sheets:

Revised Plan Sheets	
Plan Sheet	Plan Sheet Title (brief description of changes to sheet)
290	Structure Sheet – advertised plan set dimensions were not legible
291	Structure Sheet – advertised plan set dimensions were not legible
293	Structure Sheet – advertised plan set dimensions were not legible

Plan Sheets

The following 8½ x 11-inch sheets are attached and made part of the plans for this proposal:
Revised: 290, 291 and 2930.

The responsibility for notifying potential subcontractors and suppliers of these changes remains with the prime contractor.

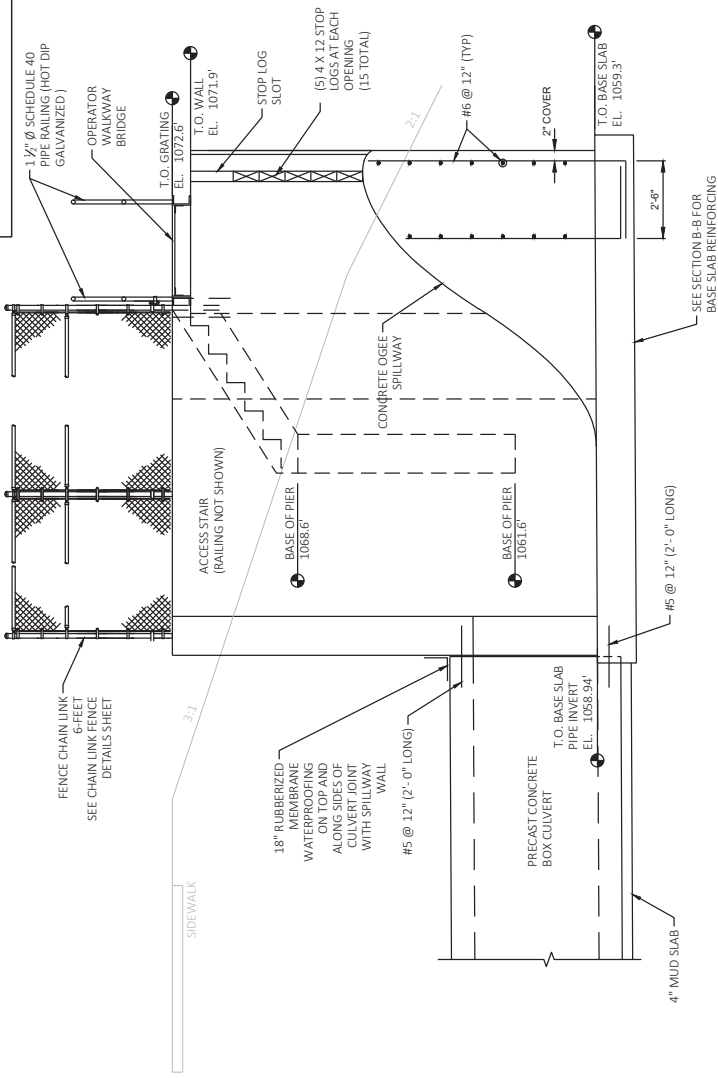
Sincerely,

Mike Coleman

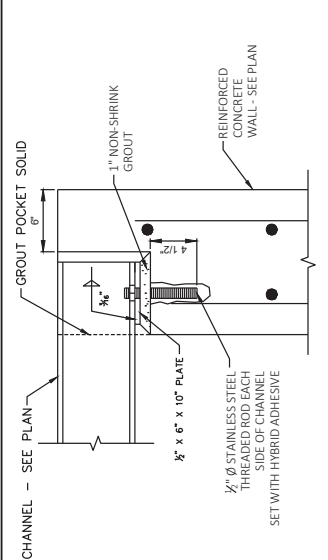
Proposal Development Specialist
Proposal Management Section

END OF ADDENDUM

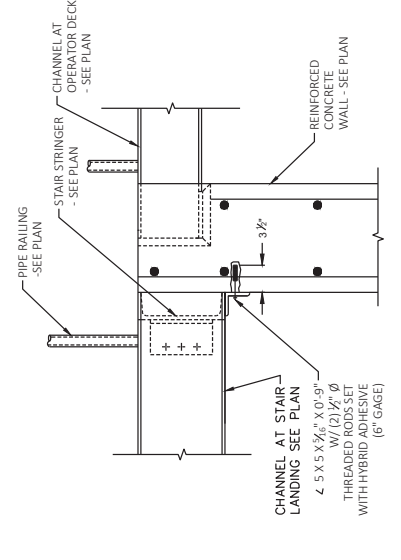
STATE PROJECT NUMBER
6414-00-79



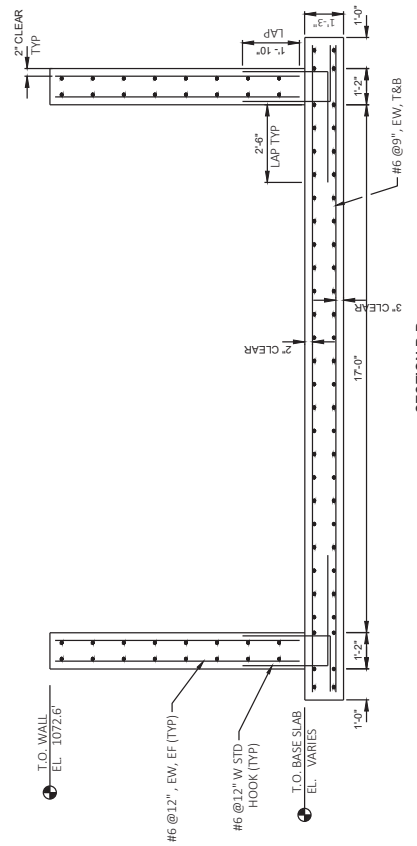
LONGITUDINAL SECTION C-C



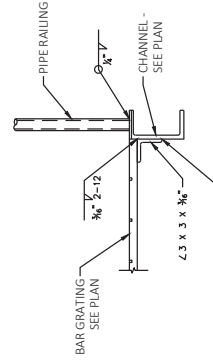
CHANNEL BEARING DETAIL AT OPERATOR WALKWAY BRIDGE



ACCESS STAIR CONNECTION DETAIL



SECTION B-B



DETAIL AT OPERATOR WALKWAY BRIDGE

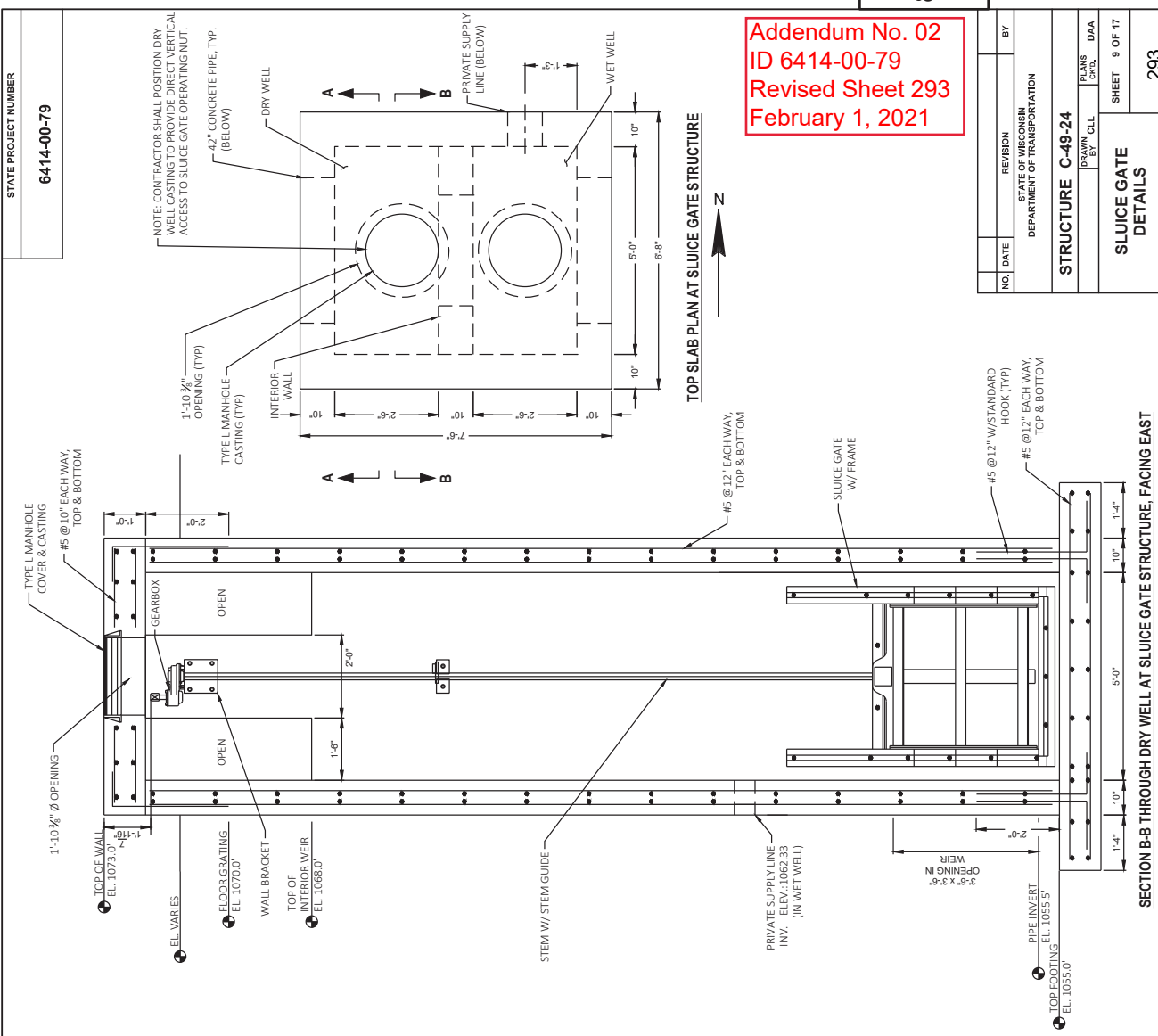
Addendum No. 02
ID 6414-00-79
Revised Sheet 291
February 1, 2021

NO.	DATE	REVISION	BY
STATE OF WISCONSIN DEPARTMENT OF TRANSPORTATION			
STRUCTURE C-49-24			
DESIGNED BY	CHECKED BY	DATE	DRAWN
PRIMARY SPILLWAY			
DETAILS			
SHEET 7 OF 17			291

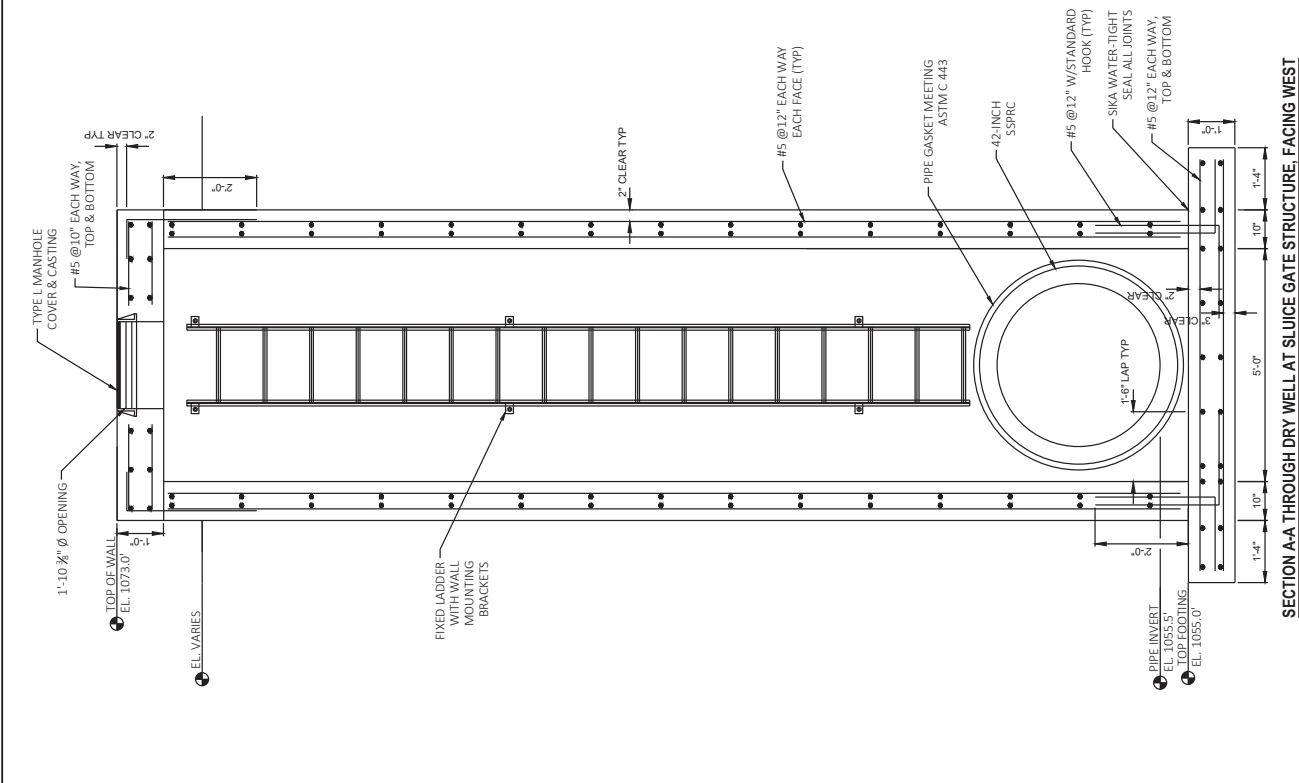
STATE PROJECT NUMBER
6414-00-79

Addendum No. 02
ID 6414-00-79
Revised Sheet 293
February 1, 2021

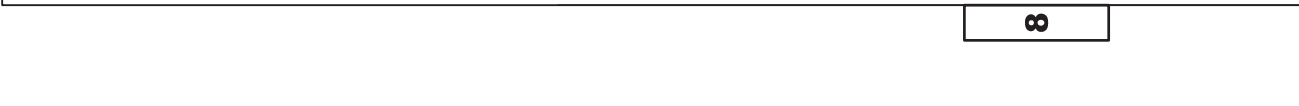
NO.	DATE	REVISION	BY
		STATE OF WISCONSIN DEPARTMENT OF TRANSPORTATION	
STRUCTURE C-49-24			
DESIGNED BY		CHKD.	DAA
DRAWN BY		CLL	
SHEET			9 OF 17
SLUICE GATE			293
DETAILS			



TOP SLAB PLAN AT SLUICE GATE STRUCTURE



SECTION A-A THROUGH DRY WELL AT SLUICE GATE STRUCTURE, FACING WEST



SECTION B-B THROUGH DRY WELL AT SLUICE GATE STRUCTURE, FACING EAST