



Wisconsin Department of Transportation

March 22, 2021

Division of Transportation Systems Development

Bureau of Project Development
4822 Madison Yards Way, 4th Floor South
Madison, WI 53705

Telephone: (608) 266-1631
Facsimile (FAX): (608) 266-8459

NOTICE TO ALL CONTRACTORS:

Proposal #08: 2978-02-70, WISC 2021 261
Silver Spring Drive
N Long Island Dr to N Lydell Ave
Local Street
Milwaukee County

Letting of April 13, 2021

This is Addendum No. 01, which provides for the following:

Special Provisions:

Revised Special Provisions	
Article No.	Description
19	Removing Traffic Signals Silver Spring Drive & Pick N Save Driveway, Item 204.9105.S.01; Removing Traffic Signals Silver Spring Drive & Bridgewood Lane, Item 204.9105.S.02; Removing Traffic Signals Silver Spring Drive & Mohawk Avenue, Item 204.9105.S.03; Removing Traffic Signals Silver Spring Drive & Lydell Avenue, Item 204.9105.S.04

Schedule of Items:

Revised Bid Item Quantities					
Bid Item	Item Description	Unit	Old Quantity	Revised Quantity	Proposal Total
655.0320	Cable Type UF, 2-10AWG Grounded	LF	684	121	805

Plan Sheets:

Revised Plan Sheets	
Plan Sheet	Plan Sheet Title (brief description of changes to sheet)
96	Traffic Signal Removal Plan – added construction notes for removal of sign lighting cable and salvage/delivery of materials to the City of Glendale/Village of Whitefish Bay
107	Traffic Signal Plan – added construction note for installation of sign lighting cable
166	Miscellaneous Quantities – added cable (655.0320) for Whitefish Bay streetscape sign

The responsibility for notifying potential subcontractors and suppliers of these changes remains with the prime contractor.

Sincerely,

Mike Coleman

Proposal Development Specialist
Proposal Management Section

ADDENDUM NO. 01

2978-02-70

March 22, 2021

Special Provisions

- 19. Removing Traffic Signals Silver Spring Drive & Pick N Save Driveway, Item 204.9105.S.01;
Removing Traffic Signals Silver Spring Drive & Bridgewood Lane, Item 204.9105.S.02;
Removing Traffic Signals Silver Spring Drive & Mohawk Avenue, Item 204.9105.S.03;
Removing Traffic Signals Silver Spring Drive & Lydell Avenue, Item 204.9105.S.04**

Replace entire section titled C Construction with the following:

C Construction

Arrange for the de-energizing of the traffic signals with the local electrical utility after receiving approval from the engineer that the existing traffic signals can be removed.

Notify the City Public Works Department at (414) 228-1710 at least five working days prior to the removal of the traffic signals. At the Lydell Avenue intersection, also notify the Village of Whitefish Bay Public Works Department at (414) 962-6690 prior to the removal of traffic signals. Complete the removal work as soon as possible following shut down of this equipment.

The City assumes that all equipment is in good condition and in working order prior to the contractor's removal operation. Prior to removal, inspect and provide a list of any damaged or non-working traffic signal equipment to the engineer. Any equipment not identified as damaged or not working, prior to removal, will be replaced by the contractor at no cost to the City.

Remove all standards and poles per plan from their concrete footings and disassemble out of traffic. Remove the transformer bases from each pole. Remove the signal heads, mast arms, luminaires, wiring/cabbling, and traffic signal mounting devices from each signal standard, arm or pole. Ensure that all access hand-hole doors and all associated hardware remain intact. Remove the signal cabinet from the footing. Dispose of the underground signal cable, internal wires and street lighting cable. At the Lydell Avenue intersection, cable removal also includes the sign lighting cable for the Village of Whitefish Bay streetscaping sign in the southeast corner of the intersection.

Deliver the remaining materials to the City Public Works Facility, 5909 N. Milwaukee River Parkway. Contact Charlie Imig, at (414) 228-1746 to coordinate delivery. At the Lydell Avenue intersection, all remaining materials on the east side of the intersection shall be delivered to the Village of Whitefish Bay Public Works Department at 5111 N. Lydell Avenue. Contact John Edlebeck at (414) 962-6690 to coordinate delivery. All other materials at this intersection shall be delivered to the City of Glendale.

Schedule of Items

Attached, dated March 22, 2021, are the revised Schedule of Items Page 6.

Plan Sheets

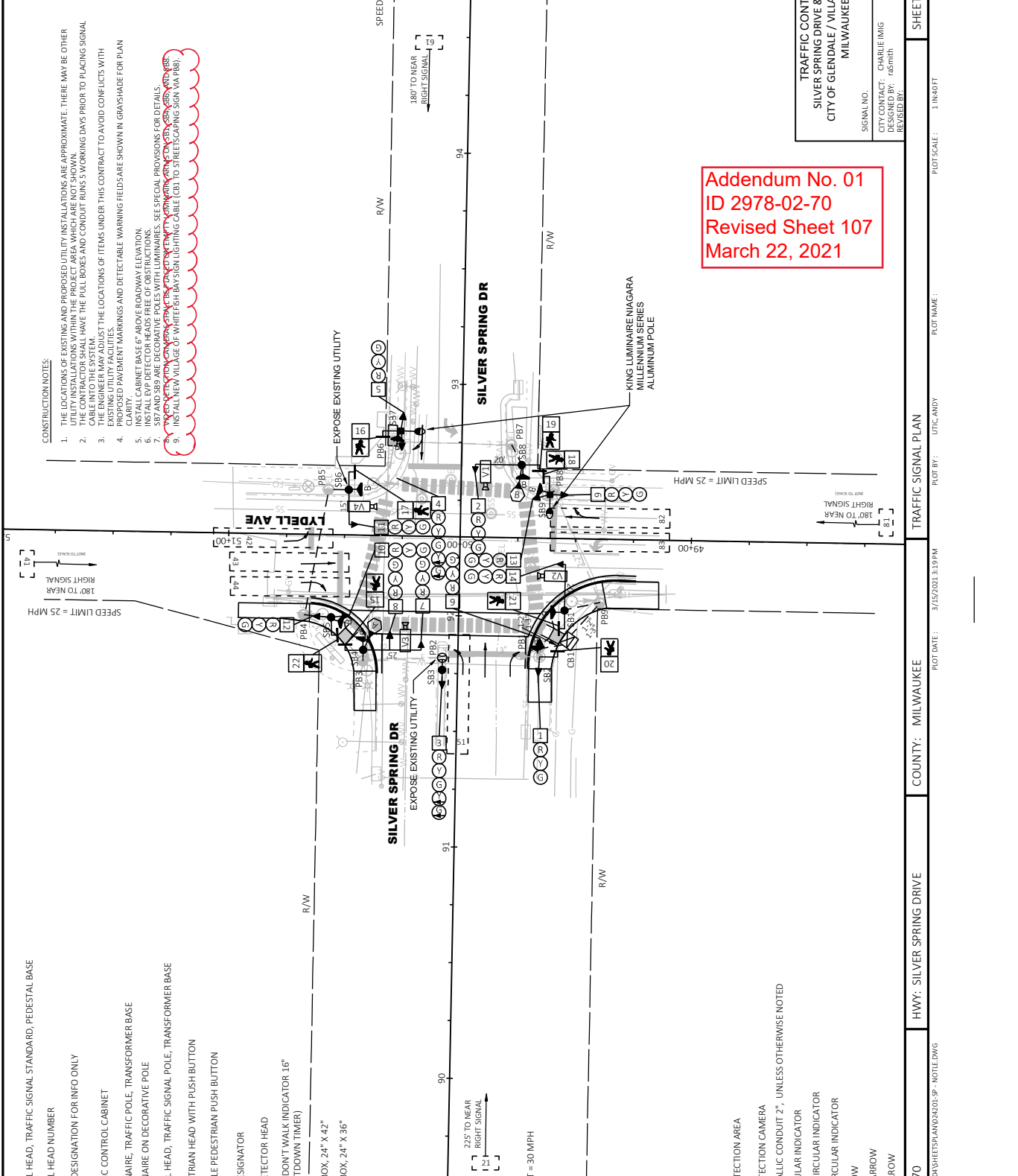
The following 8½ x 11-inch sheets are attached and made part of the plans for this proposal:
Revised: 96, 107, 166

END OF ADDENDUM

- CONSTRUCTION NOTES:**
1. THE LOCATIONS OF EXISTING AND PROPOSED UTILITY INSTALLATIONS ARE APPROXIMATE. THERE MAY BE OTHER UTILITIES NOT SHOWN. THE CONTRACTOR SHALL VERIFY THE LOCATION AND DEPTH OF ALL UTILITIES PRIOR TO PLACING SIGNAL CABLE INTO THE SYSTEM.
 2. THE CONTRACTOR SHALL HAVE THE PULL BOXES AND CONDUIT RUNS 5 WORKING DAYS PRIOR TO PLACING SIGNAL CABLE INTO THE SYSTEM.
 3. THE ENGINEER MAY ADJUST THE LOCATIONS OF ITEMS UNDER THIS CONTRACT TO AVOID CONFLICTS WITH EXISTING UTILITY FACILITIES.
 4. EXISTING PAVEMENT MARKINGS AND DETECTABLE WARNING FIELDS ARE SHOWN IN GRAY SHADE FOR PLAN CLARITY.
 5. INSTALL CABINET BASE 6" ABOVE ROADWAY ELEVATION.
 6. INSTALL EWP DETECTOR HEADS FREE OF OBSTRUCTIONS.
 7. ALL SIGNAL POLES SHALL BE 20' TALL UNLESS OTHERWISE NOTED.
 8. ALL SIGNAL POLES SHALL BE KING LUMINAIRE NIAGARA MILLENNIUM SERIES ALUMINUM POLE.
 9. INSTALL NEW VILLAGE OF WHITEFISH BAY SIGN LIGHTING CABLE (CB1) TO STREET SCAPING SIGN (VIA P81).

- LEGEND**
- SIGNAL HEAD, TRAFFIC SIGNAL STANDARD, PEDESTAL BASE
 - SIGNAL HEAD NUMBER
 - LANE DESIGNATION FOR INFO ONLY
 - TRAFFIC CONTROL CABINET
 - LUMINAIRE, TRAFFIC POLE, TRANSFORMER BASE
 - LUMINAIRE ON DECORATIVE POLE
 - SIGNAL HEAD, TRAFFIC SIGNAL POLE, TRANSFORMER BASE
 - PEDESTRIAN HEAD WITH PUSH BUTTON
 - AUDIBLE PEDESTRIAN PUSH BUTTON
 - EWP DESIGNATOR
 - EWP DETECTOR HEAD
 - WALK/DON'T WALK INDICATOR 16" (COUNTDOWN TIMER)
 - PULL BOX, 24" X 42"
 - PULL BOX, 24" X 36"
 - VIDEO DETECTION AREA
 - VIDEO DETECTION CAMERA
 - NONMETALLIC CONDUIT 2", UNLESS OTHERWISE NOTED
 - RED CIRCULAR INDICATOR
 - YELLOW CIRCULAR INDICATOR
 - GREEN CIRCULAR INDICATOR
 - RED ARROW
 - YELLOW ARROW
 - GREEN ARROW

- CONSTRUCTION NOTES:**
1. THE LOCATIONS OF EXISTING AND PROPOSED UTILITY INSTALLATIONS ARE APPROXIMATE. THERE MAY BE OTHER UTILITIES NOT SHOWN. THE CONTRACTOR SHALL VERIFY THE LOCATION AND DEPTH OF ALL UTILITIES PRIOR TO PLACING SIGNAL CABLE INTO THE SYSTEM.
 2. THE CONTRACTOR SHALL HAVE THE PULL BOXES AND CONDUIT RUNS 5 WORKING DAYS PRIOR TO PLACING SIGNAL CABLE INTO THE SYSTEM.
 3. THE ENGINEER MAY ADJUST THE LOCATIONS OF ITEMS UNDER THIS CONTRACT TO AVOID CONFLICTS WITH EXISTING UTILITY FACILITIES.
 4. EXISTING PAVEMENT MARKINGS AND DETECTABLE WARNING FIELDS ARE SHOWN IN GRAY SHADE FOR PLAN CLARITY.
 5. INSTALL CABINET BASE 6" ABOVE ROADWAY ELEVATION.
 6. INSTALL EWP DETECTOR HEADS FREE OF OBSTRUCTIONS.
 7. ALL SIGNAL POLES SHALL BE 20' TALL UNLESS OTHERWISE NOTED.
 8. ALL SIGNAL POLES SHALL BE KING LUMINAIRE NIAGARA MILLENNIUM SERIES ALUMINUM POLE.
 9. INSTALL NEW VILLAGE OF WHITEFISH BAY SIGN LIGHTING CABLE (CB1) TO STREET SCAPING SIGN (VIA P81).



Addendum No. 01
ID 2978-02-70
Revised Sheet 107
March 22, 2021

TRAFFIC CONTROL SIGNAL
SILVER SPRING DRIVE & N. LYDELL AVENUE
CITY OF GLENDALE / VILLAGE OF WHITEFISH BAY
MILWAUKEE COUNTY

SIGNAL NO.:
 CITY CONTACT: CHARLIE IMIG
 DESIGNED BY: rasmith
 REVISED BY:

PAGE 1 OF 2

Addendum No. 01
ID 2978-02-70
Revised Sheet 166
March 22, 2021

SIGNAL NO.:
PAGE 4 OF 6
SHEET NO: 166
E

SILVER SPRING DR & N. LYDELL AVE
PROJECT NO: 2978-02-70
ROAD: SILVER SPRING DR
COUNTY: MILWAUKEE
MISCELLANEOUS QUANTITIES
PLOT DATE : 3/16/2021 3:24 PM
PLOT BY :
PLOT NAME : 03201.mq
PLOT SCALE : 1.000000:1.000000
WISDOT / CADDIS SHEET 42

TRAFFIC SIGNAL CABLE

LOCATION	LOC.	TO	LOC.	655.0230 CABLE TRAFFIC SIGNAL 5-14 AWG	655.0240 CABLE TRAFFIC SIGNAL 7-14 AWG	655.0260 CABLE TRAFFIC SIGNAL 12-14 AWG	655.0270 CABLE TRAFFIC SIGNAL 15-14 AWG	655.0320 CABLE TYPE UF 2-10 AWG GROUNDED	655.0515 ELECTRICAL WIRE 10 AWG	655.0610 ELECTRICAL WIRE 12 AWG	(INCIDENTAL) LOOP DETECTOR CABLE	(INCIDENTAL) TRAFFIC SIGNAL EVP DETECTOR CABLE	(INCIDENTAL) VIDEO DETECTION CABLE
				L.F.	L.F.	L.F.	L.F.	L.F.	L.F.	L.F.	L.F.	L.F.	L.F.
SILVER SPRING DR & LYDELL AVE	CB1		SB1			50			50				95
	CB1		SB2			29			29				
	CB1		SB3			161							
	CB1		SB4			124						164	169
	CB1		SB5			180							
	CB1		SB6			226							271
	CB1		SB7			217							
	CB1		SB8			154						194	199
	CB1		SB9			108		108					
	SB2		SB3										
	SB3		SB4						151				
	SB4		SB5						53				
	SB5		SB6						79				
	SB6		SB7						176				
	SB7		SB8						239				
	SB8		SB9						96				
	PB1		SB2						64				
	PB2		SB3						20				
	PB3		SB4						49				
	PB4		SB5						27				
	PB5		SB6						23				
	PB6		SB7						23				
	PB7		SB8						24				
	PB8		SB9						20				
	PB9		SB1						32				
	SB1		HEAD 14										
	SB1		HEAD 21										
	SB1		PUSH BUTTON								6		
	SB2		HEAD 1										
	SB2		HEAD 6										
	SB2		HEAD 20										
	SB2		PUSH BUTTON								6		
	SB3		HEAD 3										
	SB4		HEAD 7										
	SB4		HEAD 8										
	SB4		HEAD 15										
	SB4		PUSH BUTTON								6		
	SB5		HEAD 10										
	SB5		HEAD 12										
	SB5		HEAD 22										
	SB5		PUSH BUTTON								6		
	SB6		HEAD 11										
	SB6		HEAD 17										
	SB6		PUSH BUTTON								6		
	SB6		LUMINAIRE							117			
	SB7		HEAD 4										
	SB7		HEAD 5										
	SB7		HEAD 16										
	SB7		PUSH BUTTON								6		
	SB8		HEAD 2										
	SB8		HEAD 19										
	SB8		PUSH BUTTON								6		
	SB9		HEAD 9										
	SB9		HEAD 13										
	SB9		HEAD 18										
	SB9		PUSH BUTTON								6		
	SB9		LUMINAIRE								117		
	CB1		SIGN										
	CB1		121										
	INTERSECTION TOTAL			485	46	1052	217	446	1155	234	48	358	734



Proposal Schedule of Items

Proposal ID: 20210413008 Project(s): 2978-02-70

Federal ID(s): WISC 2021261

SECTION: 0001 Roadway Items

Alt Set ID: Alt Mbr ID:

Proposal Line Number	Item ID Description	Approximate Quantity and Units	Unit Price	Bid Amount
0154	655.0320 Cable Type UF 2-10 AWG Grounded	805.000 LF	_____.	_____.
0156	655.0515 Electrical Wire Traffic Signals 10 AWG	3,366.000 LF	_____.	_____.
0158	655.0610 Electrical Wire Lighting 12 AWG	819.000 LF	_____.	_____.
0160	656.0200 Electrical Service Meter Breaker Pedestal (location) 01. Silver Spring Dr & Lydell Ave	LS	LUMP SUM	_____.
0162	657.0100 Pedestal Bases	8.000 EACH	_____.	_____.
0164	657.0255 Transformer Bases Breakaway 11 1/2-Inch Bolt Circle	13.000 EACH	_____.	_____.
0166	657.0305 Poles Type 2	8.000 EACH	_____.	_____.
0168	657.0310 Poles Type 3	5.000 EACH	_____.	_____.
0170	657.0405 Traffic Signal Standards Aluminum 3.5-FT	1.000 EACH	_____.	_____.
0172	657.0420 Traffic Signal Standards Aluminum 13-FT	5.000 EACH	_____.	_____.
0174	657.0425 Traffic Signal Standards Aluminum 15-FT	2.000 EACH	_____.	_____.
0176	657.0585 Trombone Arms 15-FT	2.000 EACH	_____.	_____.
0178	657.0590 Trombone Arms 20-FT	4.000 EACH	_____.	_____.
0180	657.0595 Trombone Arms 25-FT	6.000 EACH	_____.	_____.
0182	657.0609 Luminaire Arms Single Member 4-Inch Clamp 6-FT	5.000 EACH	_____.	_____.