



Wisconsin Department of Transportation

September 1, 2021

Division of Transportation Systems Development

Bureau of Project Development
4822 Madison Yards Way, 4th Floor South
Madison, WI 53705

Telephone: (608) 266-1631
Facsimile (FAX): (608) 266-8459

NOTICE TO ALL CONTRACTORS:

Proposal #24: 2565-07-70, WISC 2021442
Green Bay Rd, Village of Brown Deer
Teutonia Avenue Intersection
STH 57
Milwaukee County

2150-00-72
Brown Deer Road
STH 100, B-40-504, B-40-505
STH 100
Milwaukee County

2270-04-70, WISC 2021441
STH 57-Vil Brown Deer & City Mequon
Teutonia Avenue to Mequon Road
STH 57
Milwaukee & Ozaukee County

Letting of September 14, 2021

This is Addendum No. 01, which provides for the following:

Special Provisions:

Revised Special Provisions	
Article No.	Description
3	Prosecution and Progress
9	Referenced Construction Specifications.
10	Sanitary Sewer – City of Mequon.

Added Special Provisions	
Article No.	Description
122	Concrete Bases

Deleted Special Provisions	
Article No.	Description
104	Sanitary Sewer Force Main Pipe PVC 8-Inch, Item SPV.0090.12.
108	Removing Sanitary Sewer Inside Drop, Item SPV.0105.10.
109	Sanitary Sewer Inside Drop, Item SPV.0105.11.

Schedule of Items:

Revised Bid Item Quantities					
Bid Item	Item Description	Unit	Old Quantity	Revised Quantity	Proposal Total
204.0280	Sealing Pipes	EA	6	-1	5

Deleted Bid Item Quantities					
Bid Item	Item Description	Unit	Old Quantity	Revised Quantity	Proposal Total
SPV.0090.12	Sanitary Sewer Force Main Pipe PVC 8-Inch	LF	80	-80	0
SPV.0105.10	Removing Sanitary Sewer Inside Drop	LS	1	-1	0
SPV.0105.11	Sanitary Sewer Inside Drop	LS	1	-1	0

Plan Sheets:

Revised Plan Sheets – 2270-04-70	
Plan Sheet	Plan Sheet Title (brief description of changes to sheet)
21	Construction Details (Revised milling depth to 3" on Base Patching Asphaltic detail)
167	Storm Sewer – Construction Details (Revised two general drainage notes related to backfill)
188	Sanitary Sewer (Removed force main work and associated notes)
190	Sanitary Sewer Manhole Detail (Revised structure 826.061 to remove force main relocation detail)
191	Construction Details (Removed inside drop detail)
756	Miscellaneous Quantities (Removed items related to sanitary sewer force main work)

Revised Plan Sheets – 2565-07-70	
Plan Sheet	Plan Sheet Title (brief description of changes to sheet)
3	General Notes (Added two notes related to backfill)

The responsibility for notifying potential subcontractors and suppliers of these changes remains with the prime contractor.

Sincerely,

Mike Coleman

Proposal Development Specialist
Proposal Management Section

ADDENDUM NO. 01

2150-00-72, 2270-04-70, 2565-07-70

September 1, 2021

Special Provisions

3. Prosecution and Progress.

*Add the following to the section titled **Work Restrictions**:*

At locations that vehicular traffic and access will be maintained, provide temporary means to prevent grade differences greater than 2 inches between milled surfaces and existing or newly paved surfaces (both longitudinal and transverse) and temporary means to accommodate traffic across staged construction of pavement. Bridge vertical differences using slopes of 12:1 or greater through milling of existing HMA pavement, through temporary asphalt wedging, through the use of wedge/tapered joint as part of mainline HMA paving, or through other means as approved by the engineer. Work to remove temporary pavements or to remove longitudinal wedge/tapered joints to be paid for as removing asphaltic surface butt joints. Temporary asphalt wedging placed separately from mainline HMA paving operations to be paid for as asphaltic surface temporary.

At locations where pedestrian access will be maintained, provide temporary means to prevent grade differences greater than 1/4-inch. Bridge vertical differences using slopes of 12:1 or greater through temporary asphalt wedging or through other means approved by the engineer. Temporary asphalt wedging placed separately from mainline HMA paving operations to be paid for as temporary pedestrian surface asphalt. Work to maintain and remove temporary pavements incidental to temporary pedestrian surface asphalt.

*Replace paragraph two under section titled **Work Zone Restrictions** with the following:*

Maintain acceptable driving surface within project the limits. Acceptable driving surfaces include asphaltic surface temporary, HMA pavement, or concrete pavement. Unless otherwise approved by the engineer, pave all milled surfaces within 72 hours of milling operation.

9. Referenced Construction Specifications.

Replace entire article language with the following:

Construct the work enumerated below conforming to the "City of Mequon Standard Specifications for Land Development." If there is a discrepancy or conflict between the referenced specification and the standard specifications regarding contract administration, part 1 of the standard specifications governs.

Conform to the referenced construction specifications for the following:

- Sanitary Sewer Reinforced Concrete Collar 12-Inch
- Sanitary Sewer Reinforced Concrete Collar 21-Inch
- Sanitary Sewer Pipe Reinforced Concrete Class-II 12-Inch
- Sanitary Sewer Pipe Reinforced Concrete Class-II 21-Inch
- Temporary Sanitary Sewer Bypass
- Adjusting City of Mequon Sanitary Manhole Covers
- Adjusting City of Mequon Water Boxes

Construct the work enumerated below conforming to the “Standard Specifications for Sewer and Water Construction in Wisconsin” If there is a discrepancy or conflict between the referenced specification and the standard specifications regarding contract administration, part 1 of the standard specifications governs.

Conform to the referenced construction specifications for the following:

- Reconstructing Village of Brown Deer Sanitary Manholes
- Adjusting Village of Brown Deer Sanitary Manhole Covers
- Adjusting Village of Brown Deer Water Boxes

stp-105-002 (20130615)

10. Sanitary Sewer – City of Mequon.

Replace the paragraphs two and three with the following:

The contractor shall field verify existing locations and site conditions of sanitary sewer.

The contractor shall provide a bypass plan two months prior to the start of work.

104. DELETED.

108. DELETED.

109. DELETED.

122. Concrete Bases.

Supplement Standard Spec 654.2 with the following:

(7) If casing is to remain in place, furnish corrugated metal pipe from the department’s approved product list.

Replace Standard Spec 654.5 (2) with the following:

(2) Payment for the Bases bid items is full compensation for providing concrete bases; for embedded conduit and electrical components; for anchor templates, rods, nuts, and washers; for bar steel reinforcement; for drilling; and for excavating and backfilling.

Supplement Standard Spec 654.5 with the following:

(3) If required by the engineer, the department will pay for the material costs of casing left in place, in accordance with section 109.4.5.4.

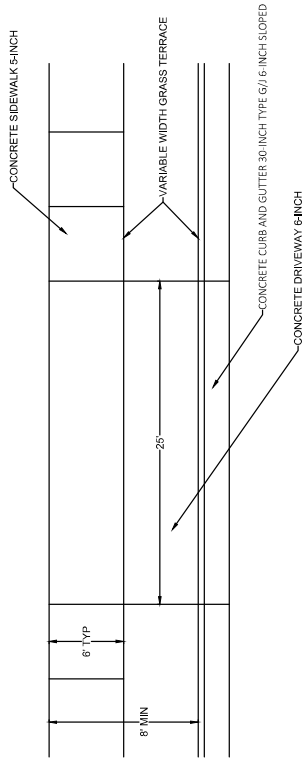
Schedule of Items

Attached, dated September 1, 2021, are the revised Schedule of Items Pages 1 – 33.

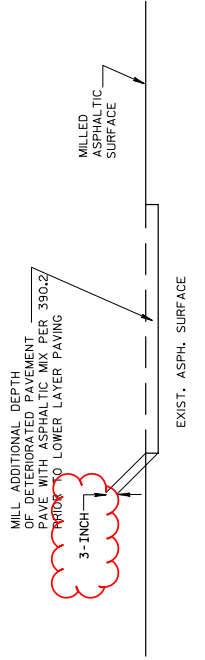
Plan Sheets

The following 8½ x 11-inch sheets are attached and made part of the plans for this proposal:
Revised: 21, 167, 188, 190, 191, 756 (2270-04-70) and 3 (2565-07-70).

END OF ADDENDUM



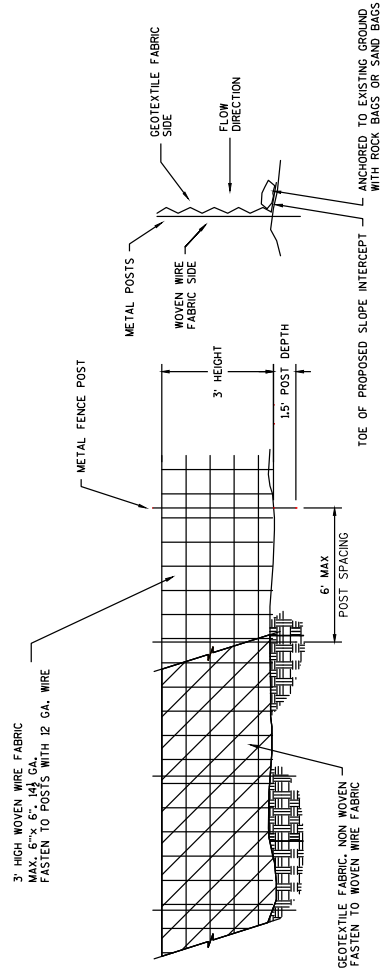
DETAIL OF TRAFFIC SIGNAL VEHICLE PAD



BASE PATCHING ASPHALTIC

LOCATIONS AS DIRECTED BY ENGINEER

Addendum No. 01
 ID 2270-04-70
 Revised Sheet 21
 September 1, 2021



HEAVY DUTY SILT FENCE DETAIL
INSTALL AS NECESSARY AS SHOWN IN THE PLANS AND DIRECTED BY THE ENGINEER

GENERAL DRAINAGE NOTES

LOCATION AND ELEVATION OF INLETS IN CURB AND GUTTER SECTION REFER TO FLOW LINE OF CURB.

LOCATION AND ELEVATION OF STORM SEWER STRUCTURES NOT IN CURB AND GUTTER REFER TO CENTERLINE OF COVER.

RIM ELEVATIONS ARE GIVEN AT FLOW LINE OF INLET OR AT CENTER OF MANHOLE. SEE STRUCTURE LOCATION DETAIL.

PIPE LENGTH REPRESENTS LENGTH OF PIPE MEASURED FROM CENTER OF STRUCTURE TO CENTER OF STRUCTURE AND IS USED FOR ESTIMATING PIPE LENGTH REPRESENTS LENGTH OF PIPE MEASURED FROM INSIDE FACE OF STRUCTURE TO INSIDE FACE OF STRUCTURE AND IS USED TO COMPUTE PIPE SLOPE.

INLET AND DISCHARGE ELEVATIONS FOR DRAINAGE STRUCTURES AND PIPES SHOWN ON THE PLANS MAY BE ADJUSTED BY THE ENGINEER TO FIT EXISTING FIELD CONDITIONS.

PROVIDE JOINT TIES ON CONCRETE STORM SEWER SYSTEM INFALL AND OUTFALL PIPES, IE THE ENDWALL JOINT AND THE NEXT 2 PIPE JOINTS.

FOR STRUCTURES AND PIPES OUTSIDE THE TRAVELED WAY INCLUSIVE OF SHOULDERS, NATIVE BACKFILL MAY BE USED AND SHALL CONFORM TO SECTION 207 EMBANKMENT SPECIFICATIONS. BACKFILL CONFORMING TO SECTION 207 IS INCIDENTAL TO PROPOSED STORM SEWER PIPE AND STORM SEWER PIPE REMOVAL.

FOR STRUCTURES AND PIPES WITHIN THE TRAVELED WAY INCLUSIVE OF SHOULDERS, BACKFILL SHALL CONFORM TO SECTION 209. BACKFILL FOR STORM SEWER PIPE REMOVAL WILL BE PAID FOR AS BACKFILL GRANULAR GRADE 1. BACKFILL FOR PROPOSED STORM SEWER PIPE IS INCIDENTAL PER SECTION 608.

UTILITY INFORMATION SHOWN ON THE PLANS IS APPROXIMATE. LOCATIONS SHOWN ARE TAKEN FROM EXISTING RECORDS AND BEST INFORMATION AVAILABLE FROM EXISTING PLANS. IT IS EXPECTED THAT THERE MAY BE DISCREPANCIES AND OMISSIONS IN THE LOCATION OF UTILITIES AND STRUCTURES SHOWN. VERIFY ALL LOCATIONS IN THE FIELD.

COORDINATE WITH DIGGERS HOTLINE TO FIELD LOCATE UTILITIES. SHEETING SHALL NOT GO THROUGH UTILITIES. ANY UTILITIES DAMAGED DUE TO CONTRACTOR ACTIVITIES SHALL BE REPAIRED AT CONTRACTOR'S EXPENSE TO THE COMPLETE SATISFACTION OF THE UTILITY FACILITY.

VERIFY THE EXISTING STORM SEWER SYSTEM CONNECTION LOCATIONS AND ELEVATIONS PRIOR TO ORDERING DRAINAGE STRUCTURES AND PIPES. NOTIFY THE ENGINEER OF ANY DISCREPANCY INFORMATION SHOWN ON THE PLANS PRIOR TO INSTALLING THE PROPOSED STORM SEWER.

SEE STORM SEWER REMOVAL PLANS FOR REMOVAL OF EXISTING STORM SEWER SYSTEM. PROVIDE BOLTED COVERS FOR MANHOLE COVERS TYPE J SPECIAL. COST OF PROVIDING BOLTED COVERS IS CONSIDERED INCIDENTAL TO COVER.

PROVIDE TEMPORARY POSITIVE DRAINAGE THROUGHOUT THE PROJECT DURING ALL PROJECT STAGES. PROVIDING TEMPORARY POSITIVE DRAINAGE IS INCIDENTAL TO CONSTRUCTION. SUPPORTING UTILITIES DURING STORM SEWER CONSTRUCTION IS INCIDENTAL TO STORM SEWER PIPE AND/OR STORM SEWER STRUCTURE.

CONSTRUCTION AND REMOVAL OF TEMPORARY BULKHEAD IS CONSIDERED INCIDENTAL TO COST OF STORM SEWER PIPE OR STORM SEWER STRUCTURE WHEN A PIPE OR STRUCTURE IS CONSTRUCTED OR REMOVED IN MULTIPLE STAGES.

STORM SEWER PLAN & PROFILE NOTE:
PLAN VIEW HIGHLIGHTS CORRESPOND TO PROFILES SHOWN IN PROFILE BELOW PLAN VIEW (SAME SHEET). STORM SEWER STRUCTURES AND PIPES LABELED IN PLAN VIEW WITHOUT HIGHLIGHT ARE SHOWN ON THE NEXT PROFILE ONLY SHEET(S).

THE MANNING'S COEFFICIENT FOR CONCRETE STORM SEWER USED IN PIPE SIZE DETERMINATIONS IS 0.013.

STORM SEWER STAGING LEGEND

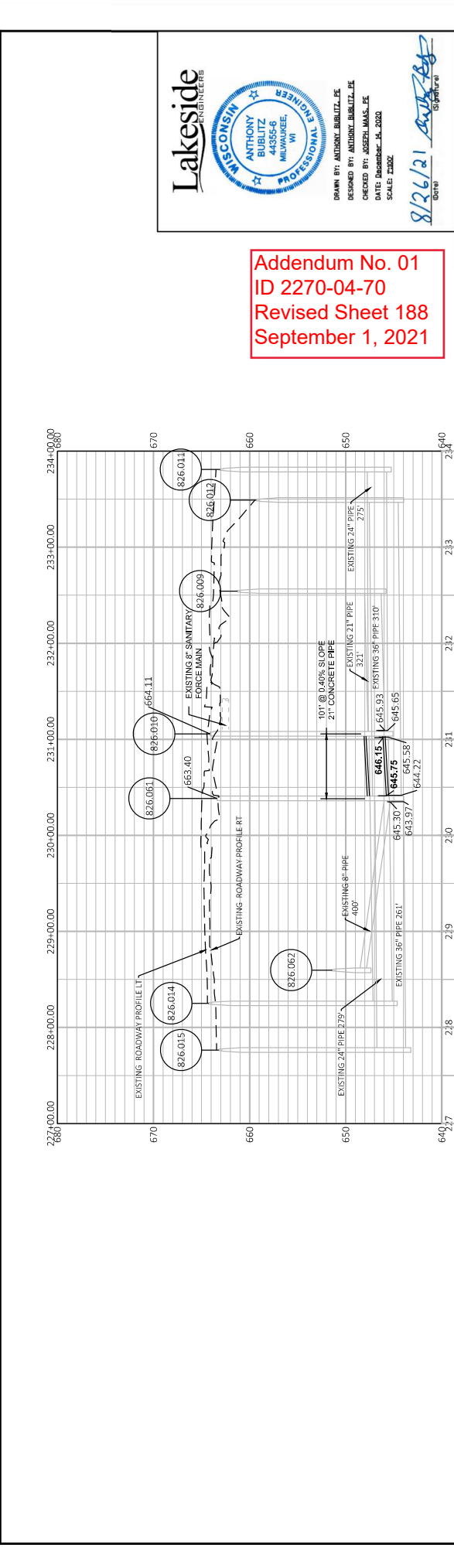
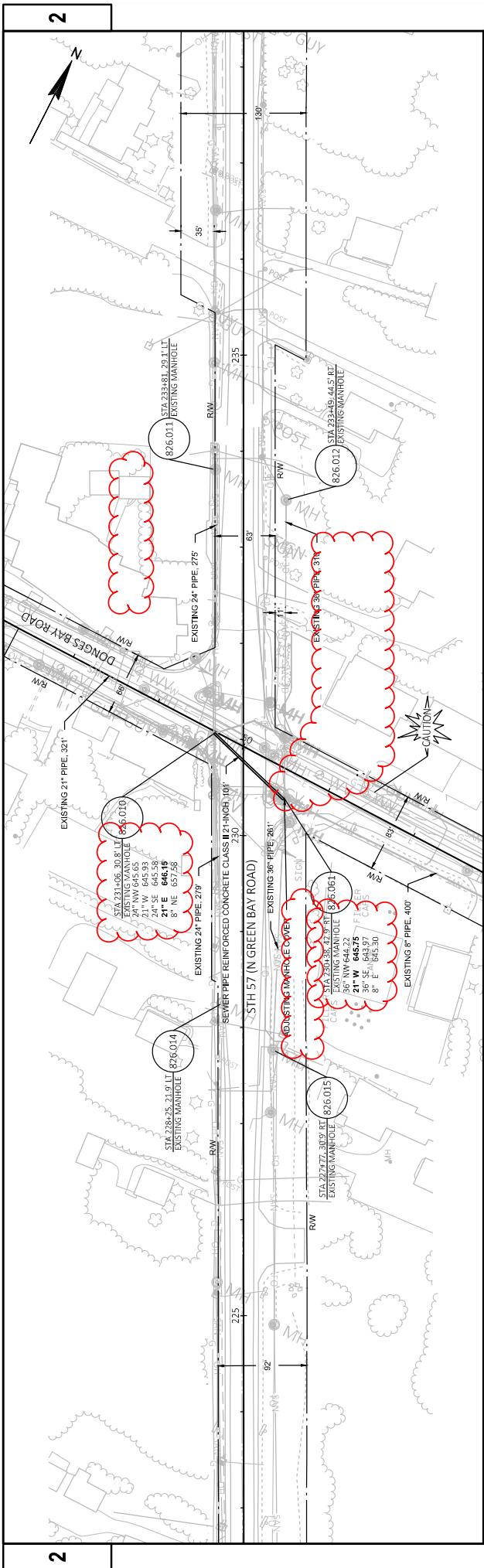
- REMOVING INLETS
- REMOVING MANHOLES
- RM 1
- AB 3

STORM SEWER LEGEND

- PROPOSED STORM SEWER PIPE PLAN VIEW
- EXISTING STORM SEWER PIPE PLAN VIEW
- EXISTING STORM SEWER PROFILE VIEW
- PROPOSED DRAINAGE STRUCTURE
- EXISTING DRAINAGE STRUCTURE
- PROPOSED MANHOLE
- PROPOSED INLET
- PROPOSED ENDWALL
- PROPOSED STORM SEWER PIPE
- EXISTING STORM SEWER PIPE

* EXISTING PIPE INTEGRITY AND CONDITION TO BE DETERMINED DURING FINAL DESIGN.

Addendum No. 01
ID 2270-04-70
Revised Sheet 167
September 1, 2021



Lakeside ENGINEERS

WISCONSIN PROFESSIONAL ENGINEERS
ANTHONY BUBBITZ
BUBBITZ ENGINEERS
MILWAUKEE, WI

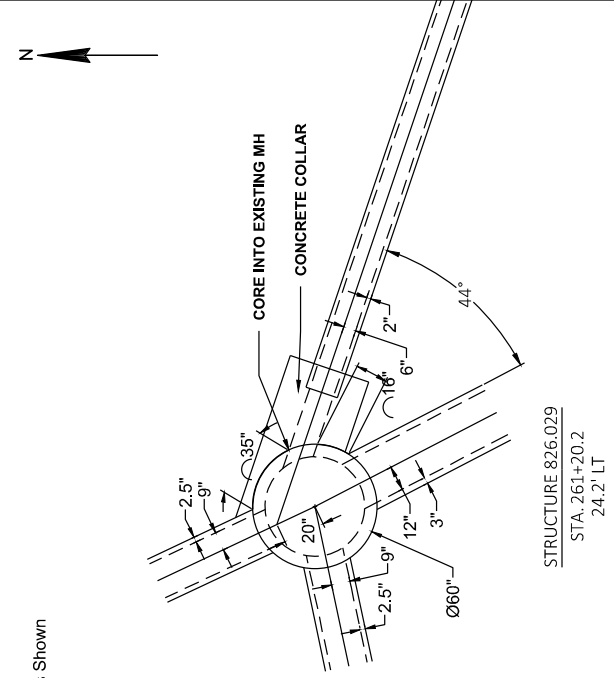
DESIGNED BY: ANTHONY BUBBITZ, DE
CHECKED BY: JOSEPH LAMAS, DE
DATE: December 14, 2020
SCALE: 2:000

8/26/21
TOM BUBBITZ

Addendum No. 01
ID 2270-04-70
Revised Sheet 188
September 1, 2021

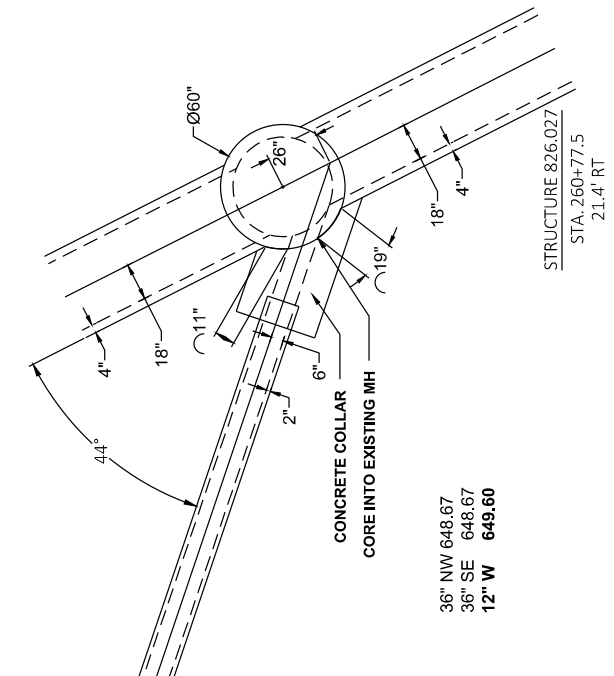
Notes: Proposed items in **BOLD>**
Exterior Structure Dimensions Shown

18" NW 649.11
18" W 649.41
24" SE 648.68
12" E 649.90



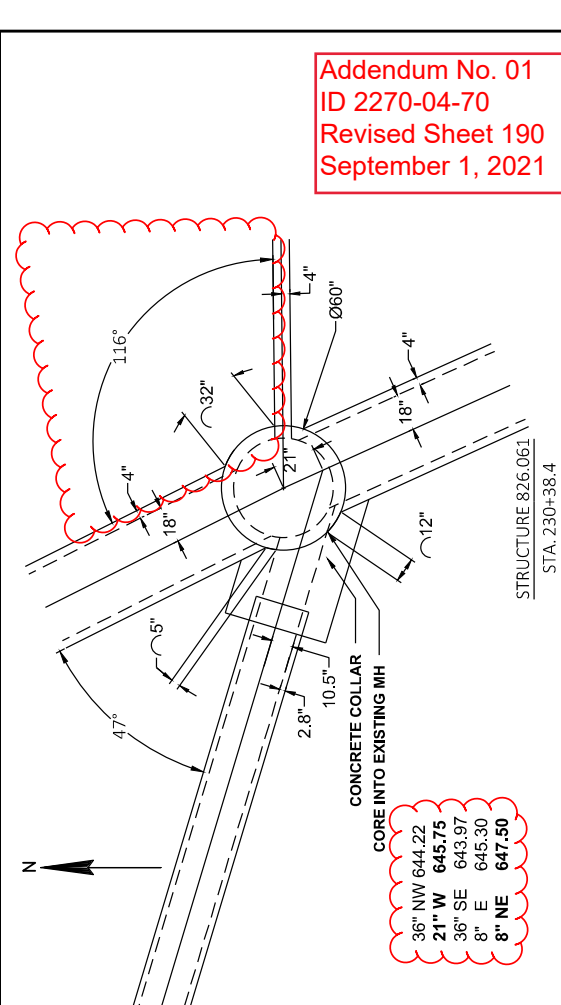
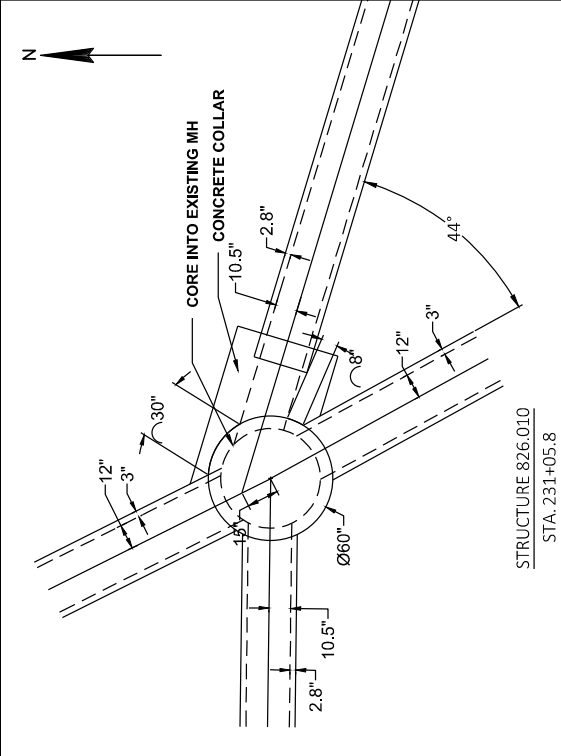
2

36" NW 648.67
36" SE 648.67
12" W 649.60



2

24" NW 645.65
21" W 645.93
24" SE 645.58
21" E 646.15



Addendum No. 01
ID 2270-04-70
Revised Sheet 190
September 1, 2021

COUNTY: MILWAUKEE & OZAUKEE
PROJECT NO: 2270-04-70
HWY: STH 57
FILE NAME: L:\DESIGN PROJECTS\15534-18_CENTRAL TRUNK EQUALIZER ID. ROADWAY CADD SHEETS\PLAN\SANITARY SEWER DESIGN ADDED\IDU.DWG

PROJECT NO: 2270-04-70
HWY: STH 57
FILE NAME: L:\DESIGN PROJECTS\15534-18_CENTRAL TRUNK EQUALIZER ID. ROADWAY CADD SHEETS\PLAN\SANITARY SEWER DESIGN ADDED\IDU.DWG

COUNTY: MILWAUKEE & OZAUKEE
PROJECT NO: 2270-04-70
HWY: STH 57
FILE NAME: L:\DESIGN PROJECTS\15534-18_CENTRAL TRUNK EQUALIZER ID. ROADWAY CADD SHEETS\PLAN\SANITARY SEWER DESIGN ADDED\IDU.DWG

COUNTY: MILWAUKEE & OZAUKEE
PROJECT NO: 2270-04-70
HWY: STH 57
FILE NAME: L:\DESIGN PROJECTS\15534-18_CENTRAL TRUNK EQUALIZER ID. ROADWAY CADD SHEETS\PLAN\SANITARY SEWER DESIGN ADDED\IDU.DWG

COUNTY: MILWAUKEE & OZAUKEE
PROJECT NO: 2270-04-70
HWY: STH 57
FILE NAME: L:\DESIGN PROJECTS\15534-18_CENTRAL TRUNK EQUALIZER ID. ROADWAY CADD SHEETS\PLAN\SANITARY SEWER DESIGN ADDED\IDU.DWG

COUNTY: MILWAUKEE & OZAUKEE
PROJECT NO: 2270-04-70
HWY: STH 57
FILE NAME: L:\DESIGN PROJECTS\15534-18_CENTRAL TRUNK EQUALIZER ID. ROADWAY CADD SHEETS\PLAN\SANITARY SEWER DESIGN ADDED\IDU.DWG

COUNTY: MILWAUKEE & OZAUKEE
PROJECT NO: 2270-04-70
HWY: STH 57
FILE NAME: L:\DESIGN PROJECTS\15534-18_CENTRAL TRUNK EQUALIZER ID. ROADWAY CADD SHEETS\PLAN\SANITARY SEWER DESIGN ADDED\IDU.DWG

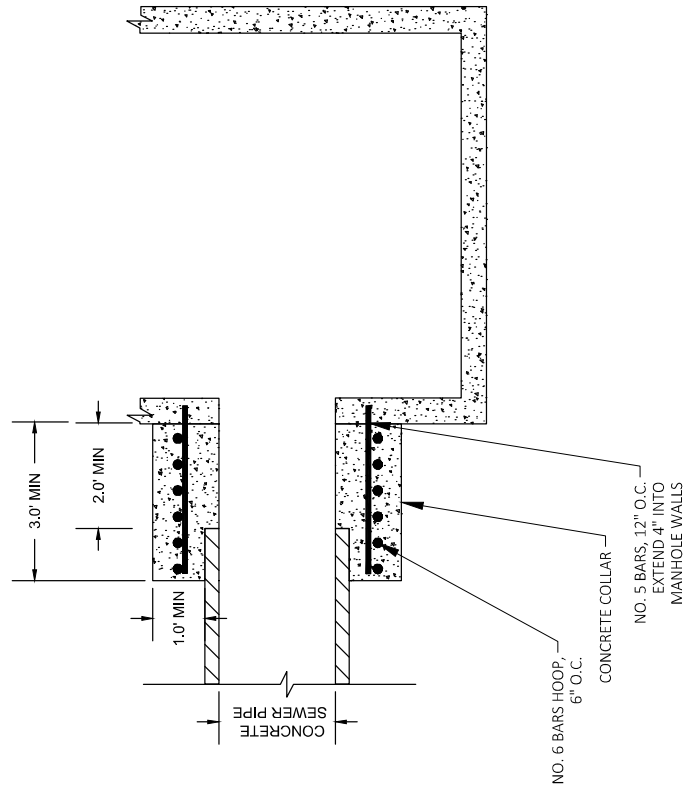
SANITARY SEWER MANHOLE DETAIL
TOMY BURBITZ
PLOT NAME: #####
PLOT SCALE: 1" = 10' - 0"

SHEET 190

E

WISDOT/CADD/SHEET 42

Addendum No. 01
ID 2270-04-70
Revised Sheet 191
September 1, 2021



SANITARY SEWER REINFORCED CONCRETE COLLAR DETAIL

ALL ITEMS ARE CATEGORY 0050 UNLESS OTHERWISE NOTED

SANITARY BYPASS

SPV.0105.12
TEMPORARY
SANITARY
SEWER BYPASS

LOCATION	LS
Project No. 2270-04-70	1
PROJECT TOTALS	1

SANITARY SEWER PIPES									
PIPE ID	FROM STR	TO STR	INLET ELEV	DISCH ELEV	SLOPE ^A %	PIPE LENGTH ^B (FT)	PLAN LENGTH ^C (FT)	PIPE CALSS	PIPE SIZE (INCH)
--	826.010	826.061	646.15	645.75	0.40	101	101	II	21
--	826.029	826.027	649.90	649.60	0.48	63	63	II	12

SANITARY SEWER ROADWAY									
Location	SY	TON	GAL	TON	TON	LF	TON	TON	LF
DONGES BAY ROAD	56	37	2	17	6	210	6	6	210
SHERWOOD DRIVE	35	23	1	10	3	134	3	3	134
PROJECT TOTALS	91	60	3	27	9	344	9	9	344

SANITARY SEWER SPECIAL									
Location	EACH	LF	LF	LF	LF	EACH	LF	EACH	LF
DONGES BAY ROAD	--	2	--	101	1	1	101	1	1
SHERWOOD DRIVE	2	--	63	--	--	--	--	--	--
PROJECT TOTALS	2	2	63	101	1	1	101	1	1

Addendum No. 01
ID 2270-04-70
Revised Sheet 756
September 1, 2021

GENERAL NOTES

DISTURBED AREAS WITHIN THE RIGHT-OF-WAY, EXCEPT AREAS WITHIN THE FINISHED SHOULDER POINTS, SHALL BE FERTILIZED, SEEDED, AND MULCHED.

THE LOCATIONS OF EXISTING AND PROPOSED UTILITY INSTALLATIONS AS SHOWN ON THE PLANS ARE APPROXIMATE. THERE MAY BE OTHER UTILITY INSTALLATIONS WITHIN THE PROJECT AREA THAT ARE NOT SHOWN. THE CONTRACTOR IS FULLY RESPONSIBLE FOR LOCATING AND AVOIDING ALL UNDERGROUND AND ABOVE GROUND STRUCTURES AND FACILITIES.

STATIONING, DISTANCES, AND OFFSETS FOR SIGNS SHOWN ON THE PLANS ARE APPROXIMATE AND THE FINAL LOCATION OF THE SIGNS ARE TO BE DETERMINED BY THE ENGINEER.

TRAFFIC CONTROL DEVICES SHALL BE ADJUSTED TO FIT FIELD CONDITIONS AS DIRECTED BY THE ENGINEER.

WETLAND, WATERWAYS, AND OTHER ENVIRONMENTALLY SENSITIVE AREAS SHALL BE PROTECTED AT ALL TIMES. DO NOT STORE EQUIPMENT OR MATERIAL NEAR THESE SITES UNLESS APPROVED BY THE ENGINEER.

REFER TO THE EROSION CONTROL SPECIAL PROVISIONS FOR REQUIREMENTS.

NO TREES OR SHRUBS ARE TO BE REMOVED WITHOUT APPROVAL OF THE ENGINEER.

ANY REINFORCEMENT LOCATED IN EXISTING CONCRETE PAVEMENT SHALL BE CONSIDERED INCIDENTAL TO THE REMOVING PAVEMENT ITEM, AND NO ADDITIONAL COMPENSATION WILL BE GRANTED.

NOTIFY DIGGERS HOTLINE AND AFFECTED UTILITIES PRIOR TO THE START OF WORK. ANY LOCAL MUNICIPAL UTILITY WHICH IS NOT A MEMBER OF THE DIGGERS HOTLINE MUST BE CONTACTED SEPARATELY.

WHEN THE QUANTITY OF BASE AGGREGATE IS MEASURED FOR PAYMENT BY THE TON, THE DEPTH OR THICKNESS OF THE LAYER SHOWN ON THE PLAN IS APPROXIMATE AND THE ACTUAL THICKNESS WILL DEPEND ON THE DISTRIBUTION OF THE MATERIAL AS DIRECTED BY THE ENGINEER.

CURB HEIGHTS AT THE END OF CURB AND GUTTER SHALL BE TAPERED FROM 0 TO 4 INCHES OR 0 TO 6 INCHES IN 6 FEET, TO BE PAID AS CURB AND GUTTER.

CURB AND GUTTER GRADES ARE GIVEN TO THE FLANGE OF CURB AND GUTTER OR THEORETICAL FLANGE POINT OF INTEGRAL CURB AND GUTTER. CURB AND GUTTER RADII ARE MEASURED TO THE FACE OF CURB AND GUTTER.

BROKEN CONCRETE CONTAINING RE-BAR SHALL NOT BE USED AS RIPRAP MEDIUM.

FERTILIZER SHALL NOT BE USED WITHIN 100' OF NAVIGABLE WATERWAYS OR WETLANDS.

WHEN DEFINING THE PAVEMENT STRUCTURE, THE BOTTOM OF THE BASE AGGREGATE DENSE IS CONSIDERED THE SUBGRADE LINE. THE SELECT CRUSHED MATERIAL LAYER IS A SUBGRADE IMPROVEMENT.

CONTACT THE PROJECT ENGINEER AND THE SOUTHEASTERN WISCONSIN REGIONAL PLANNING COMMISSION (SEWRPC) AT LEAST TWO WEEKS PRIOR TO WORK NEAR ANY PUBLIC SURVEY MONUMENT.

SAW CUTS IN EXISTING PAVEMENT AND SIDEWALKS SHALL BE TO NEAT STRAIGHT LINES. EDGES OF SAW CUT EDGES DAMAGED DURING CONSTRUCTION SHALL BE RE-cut PRIOR TO ACCEPTANCE FOR PAVING.

VERIFY EXISTING PAVEMENT ELEVATIONS AT ALL TIE-INS TO EXISTING PAVEMENT PRIOR TO CONSTRUCTION. IF A DISCREPANCY IS FOUND BETWEEN PROPOSED PLAN ELEVATIONS AND EXISTING PAVEMENT ELEVATIONS, CONTRACTOR IS TO NOTIFY ENGINEER.

THERE ARE NO RUMBLE STRIPS ALLOWED IN MILWAUKEE COUNTY. DIAGONAL PAVEMENT MARKING WILL BE USED ON SHOULDERS.

THE EXACT LOCATION OF EXCAVATION BELOW SUBGRADE (EBS) WILL BE DETERMINED BY THE ENGINEER.

ALL PRIVATE EXISTING UTILITIES ARE TO BE ADJUSTED BY THE UTILITIES CONCERNED.

FOR STORM SEWER STRUCTURES AND PIPES OUTSIDE THE TRAVELED WAY INCLUSIVE OF SHOULDERS, NATIVE BACKFILL MAY BE USED AND SHALL CONFORM TO SECTION 207 EMBANKMENT SPECIFICATIONS. BACKFILL CONFORMING TO SECTION 207 IS INCIDENTAL TO PROPOSED STORM SEWER PIPE AND STORM SEWER PIPE REMOVAL.

FOR STRUCTURES AND PIPES WITHIN THE TRAVELED WAY INCLUSIVE OF SHOULDERS, BACKFILL SHALL CONFORM TO SECTION 209. BACKFILL FOR STORM SEWER PIPE REMOVAL WILL BE PAID FOR AS BACKFILL GRANULAR GRADE 1. BACKFILL FOR PROPOSED STORM SEWER PIPE IS INCIDENTAL PER SECTION 608.

Addendum No. 01
ID 2565-07-70
Revised Sheet 3
September 1, 2021

PROJECT NO: 2565-07-70

HWY: STH 57

COUNTY: MILWAUKEE

GENERAL NOTES

SHEET 3

E

FILE NAME :

PLOT DATE : 8/30/2021 11:47 AM

PLOT BY :

PLOT NAME : 020101.dgn

PLOT SCALE : 1,000000:1,000000

WISDOT / CADDIS SHEET 42



Proposal Schedule of Items

Proposal ID: 20210914024 Project(s): 2150-00-72, 2270-04-70, 2565-07-70
 Federal ID(s): WISC 2021442, N/A, WISC 2021441

SECTION: 0001 Contract Items

Alt Set ID: Alt Mbr ID:

Proposal Line Number	Item ID Description	Approximate Quantity and Units	Unit Price	Bid Amount
0002	108.4400 CPM Progress Schedule	1.000 EACH	_____.	_____.
0004	201.0105 Clearing	45.000 STA	_____.	_____.
0006	201.0120 Clearing	60.000 ID	_____.	_____.
0008	201.0205 Grubbing	45.000 STA	_____.	_____.
0010	201.0220 Grubbing	60.000 ID	_____.	_____.
0012	203.0200 Removing Old Structure (station) 01. 120+00	LS	LUMP SUM	_____.
0014	203.0210.S Abatement of Asbestos Containing Material (structure) 01. B-40-153	LS	LUMP SUM	_____.
0016	204.0100 Removing Concrete Pavement	73,989.000 SY	_____.	_____.
0018	204.0109.S Removing Concrete Surface Partial Depth	322,878.000 SF	_____.	_____.
0020	204.0110 Removing Asphaltic Surface	170.000 SY	_____.	_____.
0022	204.0115 Removing Asphaltic Surface Butt Joints	671.000 SY	_____.	_____.
0024	204.0120 Removing Asphaltic Surface Milling	85,590.000 SY	_____.	_____.
0026	204.0150 Removing Curb & Gutter	7,524.000 LF	_____.	_____.
0028	204.0155 Removing Concrete Sidewalk	2,902.000 SY	_____.	_____.
0030	204.0165 Removing Guardrail	1,932.000 LF	_____.	_____.
0032	204.0175 Removing Concrete Slope Paving	485.000 SY	_____.	_____.



Proposal Schedule of Items

Proposal ID: 20210914024 Project(s): 2150-00-72, 2270-04-70, 2565-07-70
Federal ID(s): WISC 2021442, N/A, WISC 2021441

SECTION: 0001 Contract Items

Alt Set ID: Alt Mbr ID:

Proposal Line Number	Item ID Description	Approximate Quantity and Units	Unit Price	Bid Amount
0034	204.0185 Removing Masonry	40.000 CY	_____.	_____.
0036	204.0195 Removing Concrete Bases	63.000 EACH	_____.	_____.
0038	204.0210 Removing Manholes	14.000 EACH	_____.	_____.
0040	204.0220 Removing Inlets	100.000 EACH	_____.	_____.
0044	204.0245 Removing Storm Sewer (size) 01. 12-INCH	4,362.000 LF	_____.	_____.
0046	204.0245 Removing Storm Sewer (size) 02. 15-INCH	278.000 LF	_____.	_____.
0048	204.0245 Removing Storm Sewer (size) 03. 18-INCH	1,323.000 LF	_____.	_____.
0052	204.0245 Removing Storm Sewer (size) 04. 24-INCH	1,237.000 LF	_____.	_____.
0054	204.0245 Removing Storm Sewer (size) 05. 30-INCH	226.000 LF	_____.	_____.
0056	204.0245 Removing Storm Sewer (size) 06. 36-INCH	416.000 LF	_____.	_____.
0058	204.0245 Removing Storm Sewer (size) 07. 42-INCH	1,057.000 LF	_____.	_____.
0060	204.0245 Removing Storm Sewer (size) 08. 48-INCH	292.000 LF	_____.	_____.
0062	204.0250 Abandoning Manholes	2.000 EACH	_____.	_____.
0064	204.0280 Sealing Pipes	5.000 EACH	_____.	_____.
0066	204.0291.S Abandoning Sewer	150.000 CY	_____.	_____.



Proposal Schedule of Items

Proposal ID: 20210914024 Project(s): 2150-00-72, 2270-04-70, 2565-07-70
 Federal ID(s): WISC 2021442, N/A, WISC 2021441

SECTION: 0001 Contract Items

Alt Set ID: Alt Mbr ID:

Proposal Line Number	Item ID Description	Approximate Quantity and Units	Unit Price	Bid Amount
0068	204.9060.S Removing (item description) 61. Removing Communication Vault	2.000 EACH	_____.	_____.
0070	204.9105.S Removing (item description) 61. Remove Traffic Signals STH 57 & STH 100	LS	LUMP SUM	_____.
0072	204.9105.S Removing (item description) 62. Remove Traffic Signals STH 100 & N Kildeer Ct	LS	LUMP SUM	_____.
0074	204.9105.S Removing (item description) 63. Remove Traffic Signals STH 57 & N Deerwood Dr	LS	LUMP SUM	_____.
0076	204.9105.S Removing (item description) 64. Remove Traffic Signals STH 57 & W Schroeder Dr	LS	LUMP SUM	_____.
0078	204.9105.S Removing (item description) 65. Remove Traffic Signals STH 57 & Donges Bay Rd	LS	LUMP SUM	_____.
0080	204.9105.S Removing (item description) 66. Remove Loop Detector Wire and Lead-In Cable STH 57 & STH 100	LS	LUMP SUM	_____.
0082	204.9105.S Removing (item description) 67. Remove Loop Detector Wire and Lead-In Cable STH 57 & N Deerwood Dr	LS	LUMP SUM	_____.
0084	204.9105.S Removing (item description) 68. Remove Loop Detector Wire and Lead-In Cable STH 57 & W Schroeder Dr	LS	LUMP SUM	_____.
0086	204.9105.S Removing (item description) 69. Remove Loop Detector Wire and Lead-In Cable STH 57 & Donges Bay Rd	LS	LUMP SUM	_____.
0088	204.9105.S Removing (item description) 70. Remove Loop Detector Wire and Lead-In Cable STH 100 & N Kildeer Ct	LS	LUMP SUM	_____.
0090	205.0100 Excavation Common	144,693.000 CY	_____.	_____.



Proposal Schedule of Items

Proposal ID: 20210914024 Project(s): 2150-00-72, 2270-04-70, 2565-07-70
Federal ID(s): WISC 2021442, N/A, WISC 2021441

SECTION: 0001 Contract Items

Alt Set ID: Alt Mbr ID:

Proposal Line Number	Item ID Description	Approximate Quantity and Units	Unit Price	Bid Amount
0092	205.0501.S Excavation, Hauling, and Disposal of Petroleum Contaminated Soil	1.700 TON	_____.	_____.
0094	208.0100 Borrow	3,996.000 CY	_____.	_____.
0096	209.1500 Backfill Granular Grade 1	11,666.000 TON	_____.	_____.
0098	211.0100 Prepare Foundation for Asphaltic Paving (project) 01. 2270-04-70	LS	LUMP SUM	_____.
0100	213.0100 Finishing Roadway (project) 01. 2270-04-70	1.000 EACH	_____.	_____.
0102	213.0100 Finishing Roadway (project) 02. 2565-07-70	1.000 EACH	_____.	_____.
0104	214.0100 Obliterating Old Road	38.500 STA	_____.	_____.
0106	305.0110 Base Aggregate Dense 3/4-Inch	6,141.000 TON	_____.	_____.
0108	305.0120 Base Aggregate Dense 1 1/4-Inch	39,273.000 TON	_____.	_____.
0110	312.0110 Select Crushed Material	76,284.000 TON	_____.	_____.
0112	390.0103 Base Patching	106.000 SY	_____.	_____.
0114	390.0203 Base Patching Asphaltic	864.000 SY	_____.	_____.
0116	390.0303 Base Patching Concrete	2,139.000 SY	_____.	_____.
0118	405.0100 Coloring Concrete WisDOT Red	156.000 CY	_____.	_____.
0120	405.0200 Coloring Concrete Custom 01. Scofield Rust Fields	1,401.000 CY	_____.	_____.



Proposal Schedule of Items

Proposal ID: 20210914024 Project(s): 2150-00-72, 2270-04-70, 2565-07-70
 Federal ID(s): WISC 2021442, N/A, WISC 2021441

SECTION: 0001 Contract Items

Alt Set ID: Alt Mbr ID:

Proposal Line Number	Item ID Description	Approximate Quantity and Units	Unit Price	Bid Amount
0122	405.0200 Coloring Concrete Custom 02. Scofield Schooner Beige	363.000 CY	_____.	_____.
0124	405.0200 Coloring Concrete Custom 03. Scofield Plum Chestnut	213.000 CY	_____.	_____.
0126	415.0080 Concrete Pavement 8-Inch	54,710.000 SY	_____.	_____.
0128	415.0085 Concrete Pavement 8 1/2-Inch	12,100.000 SY	_____.	_____.
0130	415.1080 Concrete Pavement HES 8-Inch	5,439.000 SY	_____.	_____.
0132	415.5110.S Concrete Pavement Joint Layout 01. 2270-04-70	LS	LUMP SUM	_____.
0134	415.5110.S Concrete Pavement Joint Layout 02. 2565-07-70	LS	LUMP SUM	_____.
0136	416.0160 Concrete Driveway 6-Inch	140.000 SY	_____.	_____.
0138	416.0512 Concrete Truck Apron 12-Inch	470.000 SY	_____.	_____.
0140	450.4000 HMA Cold Weather Paving	2,446.000 TON	_____.	_____.
0142	455.0605 Tack Coat	6,921.000 GAL	_____.	_____.
0144	460.2000 Incentive Density HMA Pavement	12,810.000 DOL	1.00000	12,810.00
0146	460.6223 HMA Pavement 3 MT 58-28 S	11,817.000 TON	_____.	_____.
0148	460.6224 HMA Pavement 4 MT 58-28 S	8,877.000 TON	_____.	_____.
0150	465.0125 Asphaltic Surface Temporary	3,608.000 TON	_____.	_____.
0152	465.0310 Asphaltic Curb	736.000 LF	_____.	_____.



Proposal Schedule of Items

Proposal ID: 20210914024 Project(s): 2150-00-72, 2270-04-70, 2565-07-70
Federal ID(s): WISC 2021442, N/A, WISC 2021441

SECTION: 0001 Contract Items

Alt Set ID: Alt Mbr ID:

Proposal Line Number	Item ID Description	Approximate Quantity and Units	Unit Price	Bid Amount
0154	495.1000.S Cold patch	20.000 TON	_____.	_____.
0156	502.0100 Concrete Masonry Bridges	1.000 CY	_____.	_____.
0158	502.0717.S Crack Sealing Epoxy	60.000 LF	_____.	_____.
0160	502.3200 Protective Surface Treatment	2,377.000 SY	_____.	_____.
0162	502.3210 Pigmented Surface Sealer	86.000 SY	_____.	_____.
0164	502.3215.S Protective Surface Treatment Reseal	1,288.000 SY	_____.	_____.
0166	505.0600 Bar Steel Reinforcement HS Coated Structures	50.000 LB	_____.	_____.
0168	509.0200 Preparation Approaches	303.000 SY	_____.	_____.
0170	509.0301 Preparation Decks Type 1	1,273.000 SY	_____.	_____.
0172	509.0302 Preparation Decks Type 2	955.000 SY	_____.	_____.
0174	509.0505.S Cleaning Decks to Reapply Concrete Masonry Overlay	2,377.000 SY	_____.	_____.
0176	509.0600 Cleaning Approaches	303.000 SY	_____.	_____.
0178	509.1200 Curb Repair	60.000 LF	_____.	_____.
0180	509.1500 Concrete Surface Repair	2,345.000 SF	_____.	_____.
0182	509.2000 Full-Depth Deck Repair	2.000 SY	_____.	_____.
0184	509.2500 Concrete Masonry Overlay Decks	271.000 CY	_____.	_____.



Proposal Schedule of Items

Proposal ID: 20210914024 Project(s): 2150-00-72, 2270-04-70, 2565-07-70
Federal ID(s): WISC 2021442, N/A, WISC 2021441

SECTION: 0001 Contract Items

Alt Set ID: Alt Mbr ID:

Proposal Line Number	Item ID Description	Approximate Quantity and Units	Unit Price	Bid Amount
0186	509.2600 Concrete Masonry Overlay Approaches	13.000 CY	_____.	_____.
0188	509.9005.S Removing Concrete Masonry Deck Overlay (structure) 30. B-40-504	1,240.000 SY	_____.	_____.
0190	509.9005.S Removing Concrete Masonry Deck Overlay (structure) 31. B-40-505	1,137.000 SY	_____.	_____.
0192	509.9050.S Cleaning Parapets	512.000 LF	_____.	_____.
0194	520.8000 Concrete Collars for Pipe	14.000 EACH	_____.	_____.
0196	522.1015 Apron Endwalls for Culvert Pipe Reinforced Concrete 15-Inch	1.000 EACH	_____.	_____.
0198	522.1018 Apron Endwalls for Culvert Pipe Reinforced Concrete 18-Inch	1.000 EACH	_____.	_____.
0200	522.1024 Apron Endwalls for Culvert Pipe Reinforced Concrete 24-Inch	2.000 EACH	_____.	_____.
0202	522.1036 Apron Endwalls for Culvert Pipe Reinforced Concrete 36-Inch	1.000 EACH	_____.	_____.
0204	522.1054 Apron Endwalls for Culvert Pipe Reinforced Concrete 54-Inch	1.000 EACH	_____.	_____.
0206	524.0612 Apron Endwalls for Culvert Pipe Salvaged 12-Inch	1.000 EACH	_____.	_____.
0208	531.2030 Drilling Shaft 30-Inch 01. S-40-3092	17.000 LF	_____.	_____.
0210	531.2030 Drilling Shaft 30-Inch 02. S-40-3093	17.000 LF	_____.	_____.
0212	531.2042 Drilling Shaft 42-Inch 0001. S-40-669	18.000 LF	_____.	_____.
0214	531.2042 Drilling Shaft 42-Inch 0002. S-40-3090	18.000 LF	_____.	_____.



Proposal Schedule of Items

Proposal ID: 20210914024 Project(s): 2150-00-72, 2270-04-70, 2565-07-70
Federal ID(s): WISC 2021442, N/A, WISC 2021441

SECTION: 0001 Contract Items

Alt Set ID: Alt Mbr ID:

Proposal Line Number	Item ID Description	Approximate Quantity and Units	Unit Price	Bid Amount
0216	531.2042 Drilling Shaft 42-Inch 0003. S-40-3091	18.000 LF	_____.	_____.
0218	531.5110 Foundation Single-Shaft Type MC-I (structure) 01. S-40-3092	1.000 EACH	_____.	_____.
0220	531.5110 Foundation Single-Shaft Type MC-I (structure) 02. S-40-3093	1.000 EACH	_____.	_____.
0222	531.5130 Foundation Single-Shaft Type MC-III (structure) 0001. S-40-669	1.000 EACH	_____.	_____.
0224	531.5130 Foundation Single-Shaft Type MC-III (structure) 0002. S-40-3090	1.000 EACH	_____.	_____.
0226	531.5140 Foundation Single-Shaft Type MC-IV (structure) 0003. S-40-3091	1.000 EACH	_____.	_____.
0228	532.5110 Monotube Cantilever Type I (structure) 01. S-40-3092	1.000 EACH	_____.	_____.
0230	532.5110 Monotube Cantilever Type I (structure) 02. S-40-3093	1.000 EACH	_____.	_____.
0232	532.5130 Monotube Cantilever Type III (structure) 0001. S-40-669	1.000 EACH	_____.	_____.
0234	532.5130 Monotube Cantilever Type III (structure) 0002. S-40-3090	1.000 EACH	_____.	_____.
0236	532.5140 Monotube Cantilever Type IV (structure) 0003. S-40-3091	1.000 EACH	_____.	_____.
0238	601.0405 Concrete Curb & Gutter 18-Inch Type A	389.000 LF	_____.	_____.
0240	601.0407 Concrete Curb & Gutter 18-Inch Type D	240.000 LF	_____.	_____.
0242	601.0409 Concrete Curb & Gutter 30-Inch Type A	31,355.000 LF	_____.	_____.



Proposal Schedule of Items

Proposal ID: 20210914024 Project(s): 2150-00-72, 2270-04-70, 2565-07-70
 Federal ID(s): WISC 2021442, N/A, WISC 2021441

SECTION: 0001 Contract Items

Alt Set ID: Alt Mbr ID:

Proposal Line Number	Item ID Description	Approximate Quantity and Units	Unit Price	Bid Amount
0244	601.0411 Concrete Curb & Gutter 30-Inch Type D	1,470.000 LF	_____.	_____.
0246	601.0413 Concrete Curb & Gutter 6-Inch Sloped 30-Inch Type G	621.000 LF	_____.	_____.
0248	601.0557 Concrete Curb & Gutter 6-Inch Sloped 36-Inch Type D	1,079.000 LF	_____.	_____.
0250	601.0580 Concrete Curb & Gutter 4-Inch Sloped 36-Inch Type R	393.000 LF	_____.	_____.
0252	601.0600 Concrete Curb Pedestrian	642.000 LF	_____.	_____.
0254	602.0410 Concrete Sidewalk 5-Inch	109,454.000 SF	_____.	_____.
0256	602.0505 Curb Ramp Detectable Warning Field Yellow	1,064.000 SF	_____.	_____.
0258	602.0605 Curb Ramp Detectable Warning Field Radial Yellow	56.000 SF	_____.	_____.
0260	603.8000 Concrete Barrier Temporary Precast Delivered	1,105.000 LF	_____.	_____.
0262	603.8125 Concrete Barrier Temporary Precast Installed	2,068.000 LF	_____.	_____.
0264	606.0200 Riprap Medium	23.000 CY	_____.	_____.
0266	608.0312 Storm Sewer Pipe Reinforced Concrete Class III 12-Inch	707.000 LF	_____.	_____.
0268	608.0315 Storm Sewer Pipe Reinforced Concrete Class III 15-Inch	3,117.000 LF	_____.	_____.
0270	608.0318 Storm Sewer Pipe Reinforced Concrete Class III 18-Inch	600.000 LF	_____.	_____.



Proposal Schedule of Items

Proposal ID: 20210914024 Project(s): 2150-00-72, 2270-04-70, 2565-07-70
Federal ID(s): WISC 2021442, N/A, WISC 2021441

SECTION: 0001 Contract Items

Alt Set ID: Alt Mbr ID:

Proposal Line Number	Item ID Description	Approximate Quantity and Units	Unit Price	Bid Amount
0272	608.0324 Storm Sewer Pipe Reinforced Concrete Class III 24-Inch	2,155.000 LF	_____.	_____.
0274	608.0336 Storm Sewer Pipe Reinforced Concrete Class III 36-Inch	1,468.000 LF	_____.	_____.
0276	608.0342 Storm Sewer Pipe Reinforced Concrete Class III 42-Inch	74.000 LF	_____.	_____.
0278	608.0348 Storm Sewer Pipe Reinforced Concrete Class III 48-Inch	22.000 LF	_____.	_____.
0280	608.0354 Storm Sewer Pipe Reinforced Concrete Class III 54-Inch	1,027.000 LF	_____.	_____.
0282	608.0412 Storm Sewer Pipe Reinforced Concrete Class IV 12-Inch	454.000 LF	_____.	_____.
0284	608.0415 Storm Sewer Pipe Reinforced Concrete Class IV 15-Inch	1,395.000 LF	_____.	_____.
0286	608.0418 Storm Sewer Pipe Reinforced Concrete Class IV 18-Inch	58.000 LF	_____.	_____.
0288	608.0424 Storm Sewer Pipe Reinforced Concrete Class IV 24-Inch	1,671.000 LF	_____.	_____.
0290	608.0430 Storm Sewer Pipe Reinforced Concrete Class IV 30-Inch	247.000 LF	_____.	_____.
0292	608.0436 Storm Sewer Pipe Reinforced Concrete Class IV 36-Inch	22.000 LF	_____.	_____.
0294	608.0448 Storm Sewer Pipe Reinforced Concrete Class IV 48-Inch	106.000 LF	_____.	_____.
0296	611.0430 Reconstructing Inlets	3.000 EACH	_____.	_____.



Proposal Schedule of Items

Proposal ID: 20210914024 Project(s): 2150-00-72, 2270-04-70, 2565-07-70
Federal ID(s): WISC 2021442, N/A, WISC 2021441

SECTION: 0001 Contract Items

Alt Set ID: Alt Mbr ID:

Proposal Line Number	Item ID Description	Approximate Quantity and Units	Unit Price	Bid Amount
0298	611.0530 Manhole Covers Type J	9.000 EACH	_____.	_____.
0300	611.0535 Manhole Covers Type J-Special	28.000 EACH	_____.	_____.
0302	611.0606 Inlet Covers Type B	5.000 EACH	_____.	_____.
0304	611.0612 Inlet Covers Type C	2.000 EACH	_____.	_____.
0306	611.0624 Inlet Covers Type H	153.000 EACH	_____.	_____.
0308	611.0639 Inlet Covers Type H-S	31.000 EACH	_____.	_____.
0310	611.0642 Inlet Covers Type MS	13.000 EACH	_____.	_____.
0312	611.0651 Inlet Covers Type S	5.000 EACH	_____.	_____.
0314	611.0652 Inlet Covers Type T	2.000 EACH	_____.	_____.
0316	611.1004 Catch Basins 4-FT Diameter	96.000 EACH	_____.	_____.
0318	611.1005 Catch Basins 5-FT Diameter	12.000 EACH	_____.	_____.
0320	611.1006 Catch Basins 6-FT Diameter	7.000 EACH	_____.	_____.
0322	611.1230 Catch Basins 2x3-FT	21.000 EACH	_____.	_____.
0324	611.2004 Manholes 4-FT Diameter	9.000 EACH	_____.	_____.
0326	611.2005 Manholes 5-FT Diameter	16.000 EACH	_____.	_____.
0328	611.2006 Manholes 6-FT Diameter	11.000 EACH	_____.	_____.
0330	611.2007 Manholes 7-FT Diameter	7.000 EACH	_____.	_____.



Proposal Schedule of Items

Proposal ID: 20210914024 Project(s): 2150-00-72, 2270-04-70, 2565-07-70
Federal ID(s): WISC 2021442, N/A, WISC 2021441

SECTION: 0001 Contract Items

Alt Set ID: Alt Mbr ID:

Proposal Line Number	Item ID Description	Approximate Quantity and Units	Unit Price	Bid Amount
0332	611.2008 Manholes 8-FT Diameter	1.000 EACH	_____.	_____.
0334	611.3003 Inlets 3-FT Diameter	3.000 EACH	_____.	_____.
0336	611.3004 Inlets 4-FT Diameter	28.000 EACH	_____.	_____.
0338	611.3220 Inlets 2x2-FT	1.000 EACH	_____.	_____.
0340	611.3901 Inlets Median 1 Grate	11.000 EACH	_____.	_____.
0342	611.3902 Inlets Median 2 Grate	1.000 EACH	_____.	_____.
0344	611.8110 Adjusting Manhole Covers	3.000 EACH	_____.	_____.
0346	611.8115 Adjusting Inlet Covers	14.000 EACH	_____.	_____.
0348	611.8120.S Cover Plates Temporary	5.000 EACH	_____.	_____.
0350	611.9800.S Pipe Grates	3.000 EACH	_____.	_____.
0352	614.0905 Crash Cushions Temporary	1.000 EACH	_____.	_____.
0354	614.0935 Salvaged Sand Barrels	25.000 EACH	_____.	_____.
0356	616.0700.S Fence Safety	560.000 LF	_____.	_____.
0358	619.1000 Mobilization	1.000 EACH	_____.	_____.
0360	620.0300 Concrete Median Sloped Nose	2,070.000 SF	_____.	_____.
0362	624.0100 Water	1,467.000 MGAL	_____.	_____.
0364	625.0100 Topsoil	24,938.000 SY	_____.	_____.



Proposal Schedule of Items

Proposal ID: 20210914024 Project(s): 2150-00-72, 2270-04-70, 2565-07-70

Federal ID(s): WISC 2021442, N/A, WISC 2021441

SECTION: 0001

Contract Items

Alt Set ID:

Alt Mbr ID:

Proposal Line Number	Item ID Description	Approximate Quantity and Units	Unit Price	Bid Amount
0366	625.0500 Salvaged Topsoil	29,170.000 SY	_____.	_____.
0368	627.0200 Mulching	10,755.000 SY	_____.	_____.
0370	628.1104 Erosion Bales	16.000 EACH	_____.	_____.
0372	628.1504 Silt Fence	6,446.000 LF	_____.	_____.
0374	628.1520 Silt Fence Maintenance	8,644.000 LF	_____.	_____.
0376	628.1550 Silt Screen	30.000 LF	_____.	_____.
0378	628.1905 Mobilizations Erosion Control	7.000 EACH	_____.	_____.
0380	628.1910 Mobilizations Emergency Erosion Control	16.000 EACH	_____.	_____.
0382	628.2006 Erosion Mat Urban Class I Type A	23,200.000 SY	_____.	_____.
0384	628.2008 Erosion Mat Urban Class I Type B	3,893.000 SY	_____.	_____.
0386	628.6505 Soil Stabilizer Type A	2.000 ACRE	_____.	_____.
0388	628.7005 Inlet Protection Type A	237.000 EACH	_____.	_____.
0390	628.7010 Inlet Protection Type B	33.000 EACH	_____.	_____.
0392	628.7015 Inlet Protection Type C	494.000 EACH	_____.	_____.
0394	628.7020 Inlet Protection Type D	36.000 EACH	_____.	_____.
0396	628.7504 Temporary Ditch Checks	620.000 LF	_____.	_____.
0398	628.7555 Culvert Pipe Checks	18.000 EACH	_____.	_____.



Proposal Schedule of Items

Proposal ID: 20210914024 Project(s): 2150-00-72, 2270-04-70, 2565-07-70
Federal ID(s): WISC 2021442, N/A, WISC 2021441

SECTION: 0001 Contract Items

Alt Set ID: Alt Mbr ID:

Proposal Line Number	Item ID Description	Approximate Quantity and Units	Unit Price	Bid Amount
0400	628.7560 Tracking Pads	14.000 EACH	_____.	_____.
0402	628.7570 Rock Bags	50.000 EACH	_____.	_____.
0404	629.0205 Fertilizer Type A	34.000 CWT	_____.	_____.
0406	630.0140 Seeding Mixture No. 40	1,129.000 LB	_____.	_____.
0408	630.0200 Seeding Temporary	157.000 LB	_____.	_____.
0410	630.0500 Seed Water	958.000 MGAL	_____.	_____.
0412	631.0300 Sod Water	172.000 MGAL	_____.	_____.
0414	631.1000 Sod Lawn	11,344.000 SY	_____.	_____.
0416	632.0101 Trees (species) (size) (root) 01. Trees, Carpinus Caroliniana 'JN Upright'	13.000 EACH	_____.	_____.
0418	632.0101 Trees (species) (size) (root) 02. Trees, Syringa Reticulata 'Ivory Silk'	18.000 EACH	_____.	_____.
0420	632.0101 Trees (species) (size) (root) 03. Trees, Ginkgo Biloba 'Princeton Sentry'	9.000 EACH	_____.	_____.
0422	632.0101 Trees (species) (size) (root) 04. Trees, Malus Royal Raindrops	17.000 EACH	_____.	_____.
0424	632.0101 Trees (species) (size) (root) 05. Trees, Gleditsia Triacanthos 'Shademaster'	4.000 EACH	_____.	_____.
0426	632.0101 Trees (species) (size) (root) 06. Trees, Crataegus Viridis ' Winter King'	18.000 EACH	_____.	_____.
0428	632.0101 Trees (species) (size) (root) 08. Trees, Picea Glauca Var Densata	9.000 EACH	_____.	_____.



Proposal Schedule of Items

Proposal ID: 20210914024 Project(s): 2150-00-72, 2270-04-70, 2565-07-70
Federal ID(s): WISC 2021442, N/A, WISC 2021441

SECTION: 0001 Contract Items

Alt Set ID: Alt Mbr ID:

Proposal Line Number	Item ID Description	Approximate Quantity and Units	Unit Price	Bid Amount
0430	632.0101 Trees (species) (size) (root) 09. Malus 'Red Barron' B&B, 2-INCH CAL	3.000 EACH	_____.	_____.
0432	632.0101 Trees (species) (size) (root) 10. Amelachier X Grandiflora 'Autumn Brilliance' B&B, 7-FT HT	3.000 EACH	_____.	_____.
0434	632.0101 Trees (species) (size) (root) 11. Cratageus Laevigata 'Crimson Cloud' B&B, 2-INCH CAL	3.000 EACH	_____.	_____.
0436	632.0201 Shrubs (species) (size) (root) 01. Shrubs, Diervilla Lonicera 'Dwarf Bush'	144.000 EACH	_____.	_____.
0438	632.0201 Shrubs (species) (size) (root) 02. Shrubs, Juniperus Sabina 'Buffalo'	82.000 EACH	_____.	_____.
0440	632.0201 Shrubs (species) (size) (root) 03. Shrubs, Rosa Rugosa 'Dwarf Pavement'	74.000 EACH	_____.	_____.
0442	632.0201 Shrubs (species) (size) (root) 04. Shrubs, Aronia Melanocarpa 'Morton'	56.000 EACH	_____.	_____.
0444	633.5200 Markers Culvert End	6.000 EACH	_____.	_____.
0446	634.0618 Posts Wood 4x6-Inch X 18-FT	283.000 EACH	_____.	_____.
0448	634.0622 Posts Wood 4x6-Inch X 22-FT	6.000 EACH	_____.	_____.
0450	634.0814 Posts Tubular Steel 2x2-Inch X 14-FT	68.000 EACH	_____.	_____.
0452	637.2210 Signs Type II Reflective H	2,937.015 SF	_____.	_____.
0454	637.2215 Signs Type II Reflective H Folding	313.320 SF	_____.	_____.
0456	637.2230 Signs Type II Reflective F	793.530 SF	_____.	_____.



Proposal Schedule of Items

Proposal ID: 20210914024 Project(s): 2150-00-72, 2270-04-70, 2565-07-70
Federal ID(s): WISC 2021442, N/A, WISC 2021441

SECTION: 0001 Contract Items

Alt Set ID: Alt Mbr ID:

Proposal Line Number	Item ID Description	Approximate Quantity and Units	Unit Price	Bid Amount
0458	638.2102 Moving Signs Type II	20.000 EACH	_____.	_____.
0460	638.2602 Removing Signs Type II	242.000 EACH	_____.	_____.
0462	638.3000 Removing Small Sign Supports	215.000 EACH	_____.	_____.
0464	643.0300 Traffic Control Drums	364,511.000 DAY	_____.	_____.
0466	643.0410 Traffic Control Barricades Type II	2,591.000 DAY	_____.	_____.
0468	643.0420 Traffic Control Barricades Type III	72,318.000 DAY	_____.	_____.
0470	643.0500 Traffic Control Flexible Tubular Marker Posts	1,007.000 EACH	_____.	_____.
0472	643.0600 Traffic Control Flexible Tubular Marker Bases	859.000 EACH	_____.	_____.
0474	643.0705 Traffic Control Warning Lights Type A	144,636.000 DAY	_____.	_____.
0476	643.0715 Traffic Control Warning Lights Type C	72,058.000 DAY	_____.	_____.
0478	643.0800 Traffic Control Arrow Boards	1,909.000 DAY	_____.	_____.
0480	643.0900 Traffic Control Signs	181,144.000 DAY	_____.	_____.
0482	643.0920 Traffic Control Covering Signs Type II	27.000 EACH	_____.	_____.
0484	643.1000 Traffic Control Signs Fixed Message	574.000 SF	_____.	_____.
0486	643.1050 Traffic Control Signs PCMS	465.000 DAY	_____.	_____.
0488	643.1070 Traffic Control Cones 42-Inch	22,153.000 DAY	_____.	_____.



Proposal Schedule of Items

Proposal ID: 20210914024 Project(s): 2150-00-72, 2270-04-70, 2565-07-70
Federal ID(s): WISC 2021442, N/A, WISC 2021441

SECTION: 0001 Contract Items

Alt Set ID: Alt Mbr ID:

Proposal Line Number	Item ID Description	Approximate Quantity and Units	Unit Price	Bid Amount
0490	643.4100.S Traffic Control Interim Lane Closure	112.000 EACH	_____.	_____.
0492	643.5000 Traffic Control	1.000 EACH	_____.	_____.
0494	644.1410 Temporary Pedestrian Surface Asphalt	2,605.000 SF	_____.	_____.
0496	644.1430 Temporary Pedestrian Surface Plate	2,645.000 SF	_____.	_____.
0498	644.1601 Temporary Pedestrian Curb Ramp	718.000 DAY	_____.	_____.
0500	644.1810 Temporary Pedestrian Barricade	2,635.000 LF	_____.	_____.
0502	645.0120 Geotextile Type HR	16.000 SY	_____.	_____.
0504	645.0130 Geotextile Type R	30.000 SY	_____.	_____.
0506	646.1020 Marking Line Epoxy 4-Inch	48,654.000 LF	_____.	_____.
0508	646.1040 Marking Line Grooved Wet Ref Epoxy 4-Inch	15,837.000 LF	_____.	_____.
0510	646.1545 Marking Line Grooved Wet Ref Contrast Epoxy 4-Inch	5,105.000 LF	_____.	_____.
0512	646.3020 Marking Line Epoxy 8-Inch	2,442.000 LF	_____.	_____.
0514	646.3545 Marking Line Grooved Wet Ref Contrast Epoxy 8-Inch	8,077.000 LF	_____.	_____.
0516	646.4520 Marking Line Same Day Epoxy 4-Inch	19,972.000 LF	_____.	_____.
0518	646.4620 Marking Line Same Day Epoxy 8-Inch	2,091.000 LF	_____.	_____.
0520	646.5005 Marking Arrow Paint	2.000 EACH	_____.	_____.



Proposal Schedule of Items

Proposal ID: 20210914024 Project(s): 2150-00-72, 2270-04-70, 2565-07-70
Federal ID(s): WISC 2021442, N/A, WISC 2021441

SECTION: 0001 Contract Items

Alt Set ID: Alt Mbr ID:

Proposal Line Number	Item ID Description	Approximate Quantity and Units	Unit Price	Bid Amount
0522	646.5020 Marking Arrow Epoxy	69.000 EACH	_____.	_____.
0524	646.5105 Marking Word Paint	2.000 EACH	_____.	_____.
0526	646.5120 Marking Word Epoxy	29.000 EACH	_____.	_____.
0528	646.5320 Marking Railroad Crossings Epoxy	6.000 EACH	_____.	_____.
0530	646.6120 Marking Stop Line Epoxy 18-Inch	1,034.000 LF	_____.	_____.
0532	646.6320 Marking Dotted Extension Epoxy 18-Inch	67.000 LF	_____.	_____.
0534	646.7120 Marking Diagonal Epoxy 12-Inch	942.000 LF	_____.	_____.
0536	646.7420 Marking Crosswalk Epoxy Transverse Line 6-Inch	3,616.000 LF	_____.	_____.
0538	646.7520 Marking Crosswalk Epoxy Block Style 24-Inch	271.000 LF	_____.	_____.
0540	646.8120 Marking Curb Epoxy	3,014.000 LF	_____.	_____.
0542	646.8220 Marking Island Nose Epoxy	33.000 EACH	_____.	_____.
0544	646.9000 Marking Removal Line 4-Inch	14,036.000 LF	_____.	_____.
0546	646.9100 Marking Removal Line 8-Inch	400.000 LF	_____.	_____.
0548	646.9300 Marking Removal Special Marking	7.000 EACH	_____.	_____.
0550	648.0100 Locating No-Passing Zones	1.940 MI	_____.	_____.
0552	649.0105 Temporary Marking Line Paint 4-Inch	39,023.000 LF	_____.	_____.



Proposal Schedule of Items

Proposal ID: 20210914024 Project(s): 2150-00-72, 2270-04-70, 2565-07-70
 Federal ID(s): WISC 2021442, N/A, WISC 2021441

SECTION: 0001 Contract Items

Alt Set ID: Alt Mbr ID:

Proposal Line Number	Item ID Description	Approximate Quantity and Units	Unit Price	Bid Amount
0554	649.0150 Temporary Marking Line Removable Tape 4-Inch	112,951.000 LF	_____.	_____.
0556	649.0205 Temporary Marking Line Paint 8-Inch	1,804.000 LF	_____.	_____.
0558	649.0250 Temporary Marking Line Removable Tape 8-Inch	5,621.000 LF	_____.	_____.
0560	649.0650 Temporary Marking Word Removable Tape	8.000 EACH	_____.	_____.
0562	649.0760 Temporary Marking Raised Pavement Marker Type I	423.000 EACH	_____.	_____.
0564	649.0805 Temporary Marking Stop Line Paint 18-Inch	144.000 LF	_____.	_____.
0566	649.0850 Temporary Marking Stop Line Removable Tape 18-Inch	792.000 LF	_____.	_____.
0568	649.0960 Temporary Marking Removable Mask Out Tape 6-Inch	2,423.000 LF	_____.	_____.
0570	650.4000 Construction Staking Storm Sewer	247.000 EACH	_____.	_____.
0572	650.4500 Construction Staking Subgrade	15,113.000 LF	_____.	_____.
0574	650.7000 Construction Staking Concrete Pavement	13,344.000 LF	_____.	_____.
0576	650.8000 Construction Staking Resurfacing Reference	14,499.000 LF	_____.	_____.
0578	650.8500 Construction Staking Electrical Installations (project) 01. 2270-04-70	LS	LUMP SUM	_____.
0580	650.8500 Construction Staking Electrical Installations (project) 02. 2565-07-70	LS	LUMP SUM	_____.



Proposal Schedule of Items

Proposal ID: 20210914024 Project(s): 2150-00-72, 2270-04-70, 2565-07-70
Federal ID(s): WISC 2021442, N/A, WISC 2021441

SECTION: 0001 Contract Items

Alt Set ID: Alt Mbr ID:

Proposal Line Number	Item ID Description	Approximate Quantity and Units	Unit Price	Bid Amount
0582	650.9000 Construction Staking Curb Ramps	89.000 EACH	_____.	_____.
0584	650.9910 Construction Staking Supplemental Control (project) 01. 2270-04-70	LS	LUMP SUM	_____.
0586	650.9910 Construction Staking Supplemental Control (project) 02. 2565-07-70	LS	LUMP SUM	_____.
0588	650.9920 Construction Staking Slope Stakes	16,356.000 LF	_____.	_____.
0590	652.0225 Conduit Rigid Nonmetallic Schedule 40 2-Inch	11,900.000 LF	_____.	_____.
0592	652.0235 Conduit Rigid Nonmetallic Schedule 40 3-Inch	6,492.000 LF	_____.	_____.
0594	652.0605 Conduit Special 2-Inch	156.000 LF	_____.	_____.
0596	652.0615 Conduit Special 3-Inch	1,970.000 LF	_____.	_____.
0598	652.0800 Conduit Loop Detector	11,992.000 LF	_____.	_____.
0600	653.0135 Pull Boxes Steel 24x36-Inch	67.000 EACH	_____.	_____.
0602	653.0140 Pull Boxes Steel 24x42-Inch	99.000 EACH	_____.	_____.
0604	653.0905 Removing Pull Boxes	87.000 EACH	_____.	_____.
0606	654.0101 Concrete Bases Type 1	39.000 EACH	_____.	_____.
0608	654.0102 Concrete Bases Type 2	11.000 EACH	_____.	_____.
0610	654.0105 Concrete Bases Type 5	47.000 EACH	_____.	_____.
0612	654.0110 Concrete Bases Type 10	10.000 EACH	_____.	_____.



Proposal Schedule of Items

Proposal ID: 20210914024 Project(s): 2150-00-72, 2270-04-70, 2565-07-70
Federal ID(s): WISC 2021442, N/A, WISC 2021441

SECTION: 0001 Contract Items

Alt Set ID: Alt Mbr ID:

Proposal Line Number	Item ID Description	Approximate Quantity and Units	Unit Price	Bid Amount
0614	654.0120 Concrete Bases Type 10-Special	15.000 EACH	_____.	_____.
0616	654.0217 Concrete Control Cabinet Bases Type 9 Special	4.000 EACH	_____.	_____.
0618	654.0230 Concrete Control Cabinet Bases Type L30	1.000 EACH	_____.	_____.
0620	655.0230 Cable Traffic Signal 5-14 AWG	4,504.000 LF	_____.	_____.
0622	655.0240 Cable Traffic Signal 7-14 AWG	9,906.000 LF	_____.	_____.
0624	655.0260 Cable Traffic Signal 12-14 AWG	13,371.000 LF	_____.	_____.
0626	655.0270 Cable Traffic Signal 15-14 AWG	550.000 LF	_____.	_____.
0628	655.0320 Cable Type UF 2-10 AWG Grounded	9,943.000 LF	_____.	_____.
0630	655.0510 Electrical Wire Traffic Signals 12 AWG	8,111.000 LF	_____.	_____.
0632	655.0515 Electrical Wire Traffic Signals 10 AWG	15,803.000 LF	_____.	_____.
0634	655.0610 Electrical Wire Lighting 12 AWG	11,013.000 LF	_____.	_____.
0636	655.0615 Electrical Wire Lighting 10 AWG	11,347.000 LF	_____.	_____.
0638	655.0700 Loop Detector Lead In Cable	44,400.000 LF	_____.	_____.
0640	655.0800 Loop Detector Wire	46,196.000 LF	_____.	_____.
0642	655.0900 Traffic Signal EVP Detector Cable	7,644.000 LF	_____.	_____.



Proposal Schedule of Items

Proposal ID: 20210914024 Project(s): 2150-00-72, 2270-04-70, 2565-07-70
Federal ID(s): WISC 2021442, N/A, WISC 2021441

SECTION: 0001 Contract Items

Alt Set ID: Alt Mbr ID:

Proposal Line Number	Item ID Description	Approximate Quantity and Units	Unit Price	Bid Amount
0644	656.0200 Electrical Service Meter Breaker Pedestal (location) 61. STH 100 & N Deerbrook Trl	LS	LUMP SUM	_____.
0646	656.0200 Electrical Service Meter Breaker Pedestal (location) 62. STH 57 & STH 100	LS	LUMP SUM	_____.
0648	656.0200 Electrical Service Meter Breaker Pedestal (location) 63. STH 57 & N Deerwood Dr	LS	LUMP SUM	_____.
0650	656.0200 Electrical Service Meter Breaker Pedestal (location) 64. STH 57 & W Schroeder Dr	LS	LUMP SUM	_____.
0652	656.0200 Electrical Service Meter Breaker Pedestal (location) 65. STH 57 & Donges Bay Rd	LS	LUMP SUM	_____.
0654	656.0400 Electrical Service Main Lugs Only Meter Pedestal (location) 01. HL-40-GBT	LS	LUMP SUM	_____.
0656	657.0100 Pedestal Bases	2.000 EACH	_____.	_____.
0658	657.0255 Transformer Bases Breakaway 11 1/2-Inch Bolt Circle	2.000 EACH	_____.	_____.
0660	657.0305 Poles Type 2	1.000 EACH	_____.	_____.
0662	657.0322 Poles Type 5-Aluminum	1.000 EACH	_____.	_____.
0664	657.0420 Traffic Signal Standards Aluminum 13-FT	2.000 EACH	_____.	_____.
0666	657.0610 Luminaire Arms Single Member 4 1/2-Inch Clamp 6-FT	1.000 EACH	_____.	_____.
0668	658.0173 Traffic Signal Face 3S 12-Inch	12.000 EACH	_____.	_____.



Proposal Schedule of Items

Proposal ID: 20210914024 Project(s): 2150-00-72, 2270-04-70, 2565-07-70
Federal ID(s): WISC 2021442, N/A, WISC 2021441

SECTION: 0001 Contract Items

Alt Set ID: Alt Mbr ID:

Proposal Line Number	Item ID Description	Approximate Quantity and Units	Unit Price	Bid Amount
0670	658.0174 Traffic Signal Face 4S 12-Inch	4.000 EACH	_____.	_____.
0672	658.5069 Signal Mounting Hardware (location) 61. STH 100 & N Deerbrook Trl	LS	LUMP SUM	_____.
0674	658.5069 Signal Mounting Hardware (location) 62. STH 57 & STH 100	LS	LUMP SUM	_____.
0676	658.5069 Signal Mounting Hardware (location) 63. STH 100 & N Kildeer Cr	LS	LUMP SUM	_____.
0678	658.5069 Signal Mounting Hardware (location) 64. STH 57 & N Deerwood Dr	LS	LUMP SUM	_____.
0680	658.5069 Signal Mounting Hardware (location) 65. STH 57 & W Schroeder Dr	LS	LUMP SUM	_____.
0682	658.5069 Signal Mounting Hardware (location) 66. STH 57 & Donges Bay Road	LS	LUMP SUM	_____.
0684	659.1125 Luminaires Utility LED C	4.000 EACH	_____.	_____.
0686	659.2230 Lighting Control Cabinets 240/480 30-Inch	1.000 EACH	_____.	_____.
0688	661.0200 Temporary Traffic Signals for Intersections (location) 61. STH 57 SB Ramps & STH 100	LS	LUMP SUM	_____.
0690	661.0200 Temporary Traffic Signals for Intersections (location) 62. STH 57 & STH 100	LS	LUMP SUM	_____.
0692	661.0200 Temporary Traffic Signals for Intersections (location) 63. STH 57 & N Deerwood Dr	LS	LUMP SUM	_____.



Proposal Schedule of Items

Proposal ID: 20210914024 Project(s): 2150-00-72, 2270-04-70, 2565-07-70
Federal ID(s): WISC 2021442, N/A, WISC 2021441

SECTION: 0001 Contract Items

Alt Set ID: Alt Mbr ID:

Proposal Line Number	Item ID Description	Approximate Quantity and Units	Unit Price	Bid Amount
0694	661.0200 Temporary Traffic Signals for Intersections (location) 64. STH 57 & W Schroeder Dr	LS	LUMP SUM	_____.
0696	661.0300 Generators	4.000 DAY	_____.	_____.
0698	670.0100 Field System Integrator 61. STH 100 & STH 57 Traffic Signals	LS	LUMP SUM	_____.
0700	670.0200 ITS Documentation 61. STH 100 & STH 57 Traffic Signals	LS	LUMP SUM	_____.
0702	671.0122 Conduit HDPE 2-Duct 2-Inch	5,174.000 LF	_____.	_____.
0704	671.0222 Conduit HDPE Directional Bore 2-Duct 2-Inch	290.000 LF	_____.	_____.
0706	673.0105 Communication Vault Type 1	6.000 EACH	_____.	_____.
0708	674.0300 Remove Cable	3,658.000 LF	_____.	_____.
0710	677.0200 Install Camera Assembly	5.000 EACH	_____.	_____.
0712	678.0036 Install Fiber Optic Cable Outdoor Plant 36-CT	8,398.000 LF	_____.	_____.
0714	678.0200 Fiber Optic Splice Enclosure	4.000 EACH	_____.	_____.
0716	678.0300 Fiber Optic Splice	92.000 EACH	_____.	_____.
0718	678.0500 Communication System Testing 61. STH 100 & STH 57 Traffic Signals	LS	LUMP SUM	_____.
0720	678.0600 Install Ethernet Switches	4.000 EACH	_____.	_____.
0722	678.0700 Install Wireless Antennas	1.000 EACH	_____.	_____.



Proposal Schedule of Items

Proposal ID: 20210914024 Project(s): 2150-00-72, 2270-04-70, 2565-07-70

Federal ID(s): WISC 2021442, N/A, WISC 2021441

SECTION: 0001

Contract Items

Alt Set ID:

Alt Mbr ID:

Proposal Line Number	Item ID Description	Approximate Quantity and Units	Unit Price	Bid Amount
0724	690.0150 Sawing Asphalt	3,876.000 LF	_____	_____
0726	690.0250 Sawing Concrete	13,228.000 LF	_____	_____
0728	715.0415 Incentive Strength Concrete Pavement	21,675.000 DOL	1.00000	21,675.00
0730	715.0502 Incentive Strength Concrete Structures	1,626.000 DOL	1.00000	1,626.00
0732	715.0710 Optimized Aggregate Gradation Incentive	63,624.000 DOL	1.00000	63,624.00
0734	999.2000.S Installing and Maintaining Bird Deterrent System (Station) 01. B-40-504	1.000 EACH	_____	_____
0736	999.2000.S Installing and Maintaining Bird Deterrent System (Station) 02. B-40-505	1.000 EACH	_____	_____
0738	ASP.1T0A On-the-Job Training Apprentice at \$5.00/HR	6,400.000 HRS	5.00000	32,000.00
0740	ASP.1T0G On-the-Job Training Graduate at \$5.00/HR	17,280.000 HRS	4.98000	86,054.40
0742	SPV.0035 Special 01. Backfill Slurry	10.000 CY	_____	_____
0744	SPV.0035 Special 40. Shredded Hardwood Bark Mulch	290.000 CY	_____	_____
0746	SPV.0060 Special 01. Manholes 9-FT Special	1.000 EACH	_____	_____
0748	SPV.0060 Special 02. Manholes 10-FT Special	2.000 EACH	_____	_____
0750	SPV.0060 Special 03. Pipe Connection to Existing Structure	6.000 EACH	_____	_____
0752	SPV.0060 Special 05. Field Facilities Office Space	1.000 EACH	_____	_____



Proposal Schedule of Items

Proposal ID: 20210914024 Project(s): 2150-00-72, 2270-04-70, 2565-07-70
Federal ID(s): WISC 2021442, N/A, WISC 2021441

SECTION: 0001 Contract Items

Alt Set ID: Alt Mbr ID:

Proposal Line Number	Item ID Description	Approximate Quantity and Units	Unit Price	Bid Amount
0754	SPV.0060 Special 06. Curb Ramp Grading, Shaping, and Finishing	17.000 EACH	_____.	_____.
0756	SPV.0060 Special 10. Sanitary Sewer Reinforced Concrete Collar 12-INCH	2.000 EACH	_____.	_____.
0758	SPV.0060 Special 11. Sanitary Sewer Reinforced Concrete Collar 21-INCH	2.000 EACH	_____.	_____.
0760	SPV.0060 Special 12. Reconstructing Village of Brown Deer Sanitary Manholes	1.000 EACH	_____.	_____.
0762	SPV.0060 Special 13. Adjusting Village of Brown Deer Sanitary Manhole Covers	4.000 EACH	_____.	_____.
0764	SPV.0060 Special 14. Adjusting Village of Brown Deer Water Boxes	14.000 EACH	_____.	_____.
0766	SPV.0060 Special 15. Adjusting City of Mequon Sanitary Manhole Covers	1.000 EACH	_____.	_____.
0768	SPV.0060 Special 16. Adjusting Mequon Water Utility Water Boxes	3.000 EACH	_____.	_____.
0770	SPV.0060 Special 17. Marking Contrast Epoxy Special Marking Arrow	23.000 EACH	_____.	_____.
0772	SPV.0060 Special 18. Marking Contrast Epoxy Special Marking Words	7.000 EACH	_____.	_____.
0774	SPV.0060 Special 19. Utility Line Opening (ULO)	12.000 EACH	_____.	_____.
0776	SPV.0060 Special 30. Tubular Railing Repair Type 1	3.000 EACH	_____.	_____.
0778	SPV.0060 Special 31. Tubular Railing Repair Type 2	3.000 EACH	_____.	_____.



Proposal Schedule of Items

Proposal ID: 20210914024 Project(s): 2150-00-72, 2270-04-70, 2565-07-70
Federal ID(s): WISC 2021442, N/A, WISC 2021441

SECTION: 0001 Contract Items

Alt Set ID: Alt Mbr ID:

Proposal Line Number	Item ID Description	Approximate Quantity and Units	Unit Price	Bid Amount
0780	SPV.0060 Special 32. Tubular Railing Repair Type 3	1.000 EACH	_____.	_____.
0782	SPV.0060 Special 40. Masonry Pillar and Wall	1.000 EACH	_____.	_____.
0784	SPV.0060 Special 41. Perennials, Geranium X Cantabrigiense 'Karmina'	200.000 EACH	_____.	_____.
0786	SPV.0060 Special 42. Perennials, Panicum Virgatum 'Heavy Metal'	106.000 EACH	_____.	_____.
0788	SPV.0060 Special 43. Perennials, Nepeta 'Kit Cat'	156.000 EACH	_____.	_____.
0790	SPV.0060 Special 44. Perennials, Schizachyrium Scoparium 'Little Bluestem Grass'	215.000 EACH	_____.	_____.
0792	SPV.0060 Special 45. Perennials, Calamintha Nepeta 'Montrose White'	94.000 EACH	_____.	_____.
0794	SPV.0060 Special 46. Perennials, Sporobulus Heterolepis 'Prairie Dropseed'	144.000 EACH	_____.	_____.
0796	SPV.0060 Special 47. Remove, Stockpile and Reinstall Municipal Monument Sign	1.000 EACH	_____.	_____.
0798	SPV.0060 Special 48. Select Stone Material 3'X4'X3'	219.000 EACH	_____.	_____.
0800	SPV.0060 Special 49. Select Stone Material 5'X3'X5'	10.000 EACH	_____.	_____.
0802	SPV.0060 Special 50. Artistic Panels	10.000 EACH	_____.	_____.
0804	SPV.0060 Special 51. Wayfinding Sign	1.000 EACH	_____.	_____.
0806	SPV.0060 Special 61. Concrete Control Cabinet Bases Type 9 Special Super P	1.000 EACH	_____.	_____.



Proposal Schedule of Items

Proposal ID: 20210914024 Project(s): 2150-00-72, 2270-04-70, 2565-07-70
Federal ID(s): WISC 2021442, N/A, WISC 2021441

SECTION: 0001 Contract Items

Alt Set ID: Alt Mbr ID:

Proposal Line Number	Item ID Description	Approximate Quantity and Units	Unit Price	Bid Amount
0808	SPV.0060 Special 62. Pedestal Bases Black	43.000 EACH	_____.	_____.
0810	SPV.0060 Special 63. Transformer Bases Breakaway 11 1/2-Inch Bolt Circle Black	58.000 EACH	_____.	_____.
0812	SPV.0060 Special 64. Poles Type 3 Black	9.000 EACH	_____.	_____.
0814	SPV.0060 Special 65. Poles Type 5-Aluminum Black	49.000 EACH	_____.	_____.
0816	SPV.0060 Special 66. Traffic Signal Standards Aluminum 3.5-FT Black	1.000 EACH	_____.	_____.
0818	SPV.0060 Special 67. Traffic Signal Standards Aluminum 13-FT Black	16.000 EACH	_____.	_____.
0820	SPV.0060 Special 68. Traffic Signal Standards Aluminum 15-FT Black	17.000 EACH	_____.	_____.
0822	SPV.0060 Special 69. Traffic Signal Standards Aluminum 10-FT Black	9.000 EACH	_____.	_____.
0824	SPV.0060 Special 70. Luminaire Arms Single Member 4-INCH Clamp 6-FT Black	14.000 EACH	_____.	_____.
0826	SPV.0060 Special 71. Luminaire Arms Single Member 4 1/2-INCH Clamp 6-FT Black	34.000 EACH	_____.	_____.
0828	SPV.0060 Special 72. Install Poles Type 9	3.000 EACH	_____.	_____.
0830	SPV.0060 Special 73. Install Poles Type 9-Special	9.000 EACH	_____.	_____.
0832	SPV.0060 Special 74. Install Poles Type 10	8.000 EACH	_____.	_____.
0834	SPV.0060 Special 75. Install Poles Type 10-Special	6.000 EACH	_____.	_____.
0836	SPV.0060 Special 76. Install Monotube Arms 20-FT	1.000 EACH	_____.	_____.



Proposal Schedule of Items

Proposal ID: 20210914024 Project(s): 2150-00-72, 2270-04-70, 2565-07-70
Federal ID(s): WISC 2021442, N/A, WISC 2021441

SECTION: 0001 Contract Items

Alt Set ID: Alt Mbr ID:

Proposal Line Number	Item ID Description	Approximate Quantity and Units	Unit Price	Bid Amount
0838	SPV.0060 Special 77. Install Monotube Arms 25-FT	4.000 EACH	_____.	_____.
0840	SPV.0060 Special 78. Install Monotube Arms 30-FT	6.000 EACH	_____.	_____.
0842	SPV.0060 Special 79. Install Monotube Arms 35-FT Special	3.000 EACH	_____.	_____.
0844	SPV.0060 Special 80. Install Monotube Arms 40-FT Special	3.000 EACH	_____.	_____.
0846	SPV.0060 Special 81. Install Monotube Arms 45-FT Special	9.000 EACH	_____.	_____.
0848	SPV.0060 Special 82. Install Luminaire Arms Steel 15-FT	20.000 EACH	_____.	_____.
0850	SPV.0060 Special 83. Traffic Signal Face 3S 12- INCH Black	92.000 EACH	_____.	_____.
0852	SPV.0060 Special 84. Traffic Signal Face 4S 12- INCH Black	34.000 EACH	_____.	_____.
0854	SPV.0060 Special 85. Pedestrian Signal Face 16- INCH Black	42.000 EACH	_____.	_____.
0856	SPV.0060 Special 86. Pedestrian Push Button Black	51.000 EACH	_____.	_____.
0858	SPV.0060 Special 87. Luminaires Utility LED C Black	85.000 EACH	_____.	_____.
0860	SPV.0060 Special 88. Luminaire Arms Single Member 4 1/2-Inch Clamp 8-FT Black	20.000 EACH	_____.	_____.
0862	SPV.0060 Special 89. Install Monotube Arms 45-FT	2.000 EACH	_____.	_____.
0864	SPV.0060 Special 90. Install Poles Type 12	2.000 EACH	_____.	_____.



Proposal Schedule of Items

Proposal ID: 20210914024 Project(s): 2150-00-72, 2270-04-70, 2565-07-70
 Federal ID(s): WISC 2021442, N/A, WISC 2021441

SECTION: 0001 Contract Items

Alt Set ID: Alt Mbr ID:

Proposal Line Number	Item ID Description	Approximate Quantity and Units	Unit Price	Bid Amount
0866	SPV.0085 Special 40. No Mow Fescue Mix	29.000 LB	_____.	_____.
0868	SPV.0090 Special 01. Heavy Duty Silt Fence	2,198.000 LF	_____.	_____.
0870	SPV.0090 Special 10. Sanitary Sewer Pipe Reinforced Concrete Class II 12-INCH	63.000 LF	_____.	_____.
0872	SPV.0090 Special 11. Sanitary Sewer Pipe Reinforced Concrete Class II 21-INCH	101.000 LF	_____.	_____.
0876	SPV.0090 Special 40. Steel Edging Material	1,430.000 LF	_____.	_____.
0878	SPV.0090 Special 41. Compacted Gravel Leveling Course	20.000 LF	_____.	_____.
0880	SPV.0105 Special 01. Control of Water Storm Sewer	LS	LUMP SUM	_____.
0886	SPV.0105 Special 12. Temporary Sanitary Sewer Bypass	LS	LUMP SUM	_____.
0888	SPV.0105 Special 61. Trnspt & Install State Furn Traffic Signal Cabinet STH 100 & N Deerbrook Trl	LS	LUMP SUM	_____.
0890	SPV.0105 Special 62. Trnspt & Install State Furn Traffic Signal Cabinet STH 57 & STH 100	LS	LUMP SUM	_____.
0892	SPV.0105 Special 63. Trnspt & Install State Furn Traffic Signal Cabinet STH 57 & N Deerwood Dr	LS	LUMP SUM	_____.
0894	SPV.0105 Special 64. Trnspt & Install State Furn Traffic Signal Cabinet STH 57 & W Schroeder Dr	LS	LUMP SUM	_____.



Proposal Schedule of Items

Proposal ID: 20210914024 Project(s): 2150-00-72, 2270-04-70, 2565-07-70
Federal ID(s): WISC 2021442, N/A, WISC 2021441

SECTION: 0001 Contract Items

Alt Set ID: Alt Mbr ID:

Proposal Line Number	Item ID Description	Approximate Quantity and Units	Unit Price	Bid Amount
0896	SPV.0105 Special 65. Trnspt & Install State Furn Traffic Signal Cabinet STH 57 & Donges Bay Rd	LS	LUMP SUM	_____.
0898	SPV.0105 Special 66. Trnspt Traffic Signals & Inter Lighting Materials STH 100 & N Deerbrook Trl	LS	LUMP SUM	_____.
0900	SPV.0105 Special 67. Trnspt Traffic Signals & Inter Lighting Materials STH 57 & STH 100	LS	LUMP SUM	_____.
0902	SPV.0105 Special 68. Trnspt Traffic Signals & Inter Lighting Materials STH 100 & N Kildeer Ct	LS	LUMP SUM	_____.
0904	SPV.0105 Special 69. Trnspt Traffic Signals & Inter Lighting Materials STH 57 & N Deerwood Dr	LS	LUMP SUM	_____.
0906	SPV.0105 Special 70. Trnspt Traffic Signals & Inter Lighting Materials STH 57 & W Schroeder Dr	LS	LUMP SUM	_____.
0908	SPV.0105 Special 71. Trnspt Traffic Signals & Inter Lighting Materials STH 57 & Donges Bay Rd	LS	LUMP SUM	_____.
0910	SPV.0105 Special 72. Trnspt & Install State Furn EVP Heads STH 100 & N Deerbrook Trl	LS	LUMP SUM	_____.
0912	SPV.0105 Special 73. Trnspt & Install State Furn EVP Heads STH 57 & STH 100	LS	LUMP SUM	_____.
0914	SPV.0105 Special 74. Trnspt & Install State Furn EVP Heads STH 100 & N Kildeer Ct	LS	LUMP SUM	_____.
0916	SPV.0105 Special 75. Trnspt & Install State Furn EVP Heads STH 57 & N Deerwood Dr	LS	LUMP SUM	_____.
0918	SPV.0105 Special 76. Trnspt & Install State Furn EVP Heads STH 57 & W Schroeder Dr	LS	LUMP SUM	_____.



Proposal Schedule of Items

Proposal ID: 20210914024 Project(s): 2150-00-72, 2270-04-70, 2565-07-70
 Federal ID(s): WISC 2021442, N/A, WISC 2021441

SECTION: 0001 Contract Items

Alt Set ID: Alt Mbr ID:

Proposal Line Number	Item ID Description	Approximate Quantity and Units	Unit Price	Bid Amount
0920	SPV.0105 Special 77. Trnspt & Install State Furn EVP Heads STH 57 & Donges Bay Rd	LS	LUMP SUM	_____.
0922	SPV.0105 Special 79. Trnspt and Install S-F FO Cable Pigtail 8-CT STH 100 & N Deerbrook Trl	LS	LUMP SUM	_____.
0924	SPV.0105 Special 80. Trnspt and Install S-F FO Cable Pigtail 8-CT STH 57 & STH 100	LS	LUMP SUM	_____.
0926	SPV.0105 Special 81. Trnspt and Install S-F FO Cable Pigtail 8-CT STH 57 & N Deerwood Dr	LS	LUMP SUM	_____.
0928	SPV.0105 Special 82. Trnspt and Install S-F FO Cable Pigtail 8-CT STH 57 & W Schroeder Dr	LS	LUMP SUM	_____.
0930	SPV.0105 Special 83. Trnspt and Install S-F Radar Detection System STH 100 & N Deerbrook Trl	LS	LUMP SUM	_____.
0932	SPV.0105 Special 84. Temporary EVP System STH 57 SB Ramps & STH 100	LS	LUMP SUM	_____.
0934	SPV.0105 Special 85. Temporary EVP System STH 57 & STH 100	LS	LUMP SUM	_____.
0936	SPV.0105 Special 86. Temporary EVP System STH 57 & N Deerwood Dr	LS	LUMP SUM	_____.
0938	SPV.0105 Special 87. Temporary EVP System STH 57 & W Schroeder Dr	LS	LUMP SUM	_____.
0940	SPV.0105 Special 88. Covering Traffic Signal Equipment STH 100 & N Deerbrook Trl	LS	LUMP SUM	_____.
0942	SPV.0165 Special 01. Construction Staking Sidewalk	79,608.000 SF	_____.	_____.



Proposal Schedule of Items

Proposal ID: 20210914024 Project(s): 2150-00-72, 2270-04-70, 2565-07-70
Federal ID(s): WISC 2021442, N/A, WISC 2021441

SECTION: 0001 Contract Items

Alt Set ID: Alt Mbr ID:

Proposal Line Number	Item ID Description	Approximate Quantity and Units	Unit Price	Bid Amount
0944	SPV.0165 Special 30. PPC Beam Surface Repair	5.000 SF	_____.	_____.
0946	SPV.0195 Special 01. Excavation, Hauling, and Disposal of Creosote Contaminated Soil	3,587.000 TON	_____.	_____.
0948	SPV.0195 Special 02. Joint and Crack Repair	575.000 TON	_____.	_____.
	Section: 0001		Total:	_____.
			Total Bid:	_____.