



Wisconsin Department of Transportation

Division of Transportation Systems Development

Bureau of Project Development
4822 Madison Yards Way, 4th Floor South
Madison, WI 53705

March 2, 2022

Telephone: (608) 266-1631
Facsimile (FAX): (608) 266-8459

NOTICE TO ALL CONTRACTORS:

Proposal #02: 1016-05-64
Mauston – Wisconsin Dells
24th Avenue Structure B-29-24
IH 90
Juneau County

1016-05-66
Mauston – Wisconsin Dells
Koval Rd Bridges B-29-21 & B-29-22
IH 90
Juneau County

Letting of March 8, 2022

This is Addendum No. 01, which provides for the following:

Schedule of Items:

Added Bid Item Quantities					
Bid Item	Item Description	Unit	Old Quantity	Revised Quantity	Proposal Total
203.0220	Removing Structure 01. B-29-21	Each	0	1	1
203.0220	Removing Structure 02. B-29-22	Each	0	1	1

Plan Sheets:

Revised Plan Sheets – 1016-05-66	
Plan Sheet	Plan Sheet Title (brief description of changes to sheet)
38-39	Added Removing Structure Item
48-49	Added Removing Structure Item

Schedule of Items

Attached, dated March 2, 2022, are the revised Schedule of Items Page 6.

Plan Sheets

The following 8½ x 11-inch sheets are attached and made part of the plans for this proposal:
1016-05-66 Revised: 38, 39, 48, 49

The responsibility for notifying potential subcontractors and suppliers of these changes remains with the prime contractor.

Sincerely,

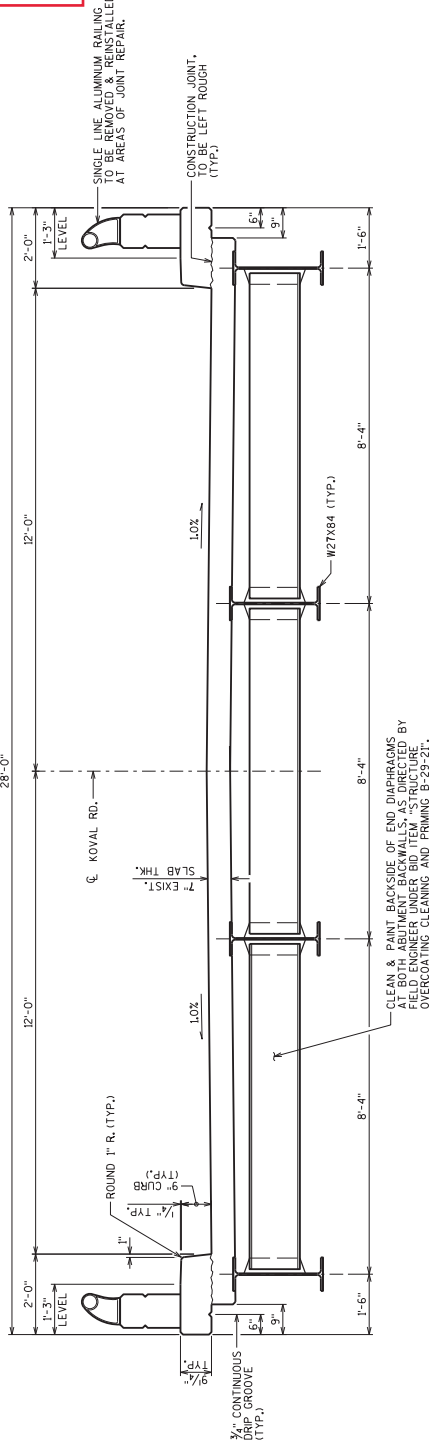
Mike Coleman

Proposal Development Specialist
Proposal Management Section

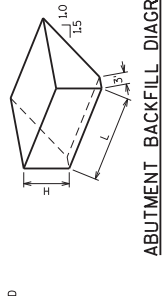
END OF ADDENDUM

STATE PROJECT NUMBER
1016-05-66

Addendum No. 01
ID 1016-05-66
Revised Sheet 39
March 2, 2022

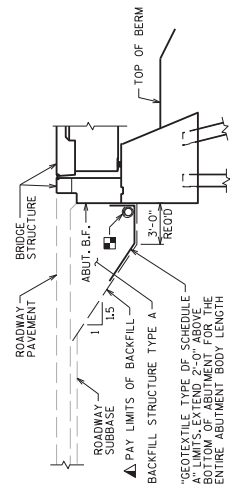


CROSS SECTION THRU ROADWAY
(LOOKING NORTH)



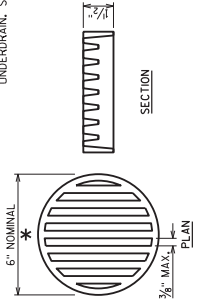
ABUTMENT BACKFILL DIAGRAM
FOR WINGS PARALLEL TO ROADWAY

L = OUT TO OUT OF ABUTMENT INCLUDING WINGS (FT)
L1 = OUT TO OUT OF ABUTMENT INCLUDING WINGS (FT)
EF = EXPANSION FACTOR (1.20 FOR CY BID ITEMS
AND 1.00 FOR TON BID ITEMS)
V_{CR} = (L1)(3.0)(H) + (L1)(0.5)(MLSHH)
V_{CON} = V_{CR} (2.0)



TYPICAL SECTION
THRU ABUTMENTS

BACKFILL PAY LIMITS BEYOND BACKFILL PAY LIMITS SHALL BE INCIDENTAL TO EXCAVATION FOR STRUCTURES. LIMITS OF EXCAVATION SHALL BE DETERMINED BY THE CONTRACTOR.
PIPE UNDERDRAIN WRAPPED 16 INCH, SLOPE 0.5% MIN. TO SUITABLE DRAINAGE. ATTACH RODENT SHIELD AT ENDS OF PIPE UNDERDRAIN. SEE DETAIL THIS SHEET.



RODENT SHIELD DETAIL

* DIMENSIONS ARE APPROXIMATE. THE GRATE IS SIZED TO FIT INTO A PIPE COUPLING. ORIENT 50 SLOTS ARE VERTICAL.
THE RODENT SHIELD PIPE COUPLING AND SCREWS SHALL BE CONSIDERED INCIDENTAL TO THE BID ITEM PIPE UNDERDRAIN WRAPPED 16 INCH.
THE RODENT SHIELD SHALL BE A PVC GRATE SIMILAR TO THIS DETAIL. THE RODENT SHIELD SHALL BE FASTENED TO THE END OF THE PIPE UNDERDRAIN. THE SHIELD SHALL BE FASTENED TO THE PIPE COUPLING WITH TWO OR MORE NO. 10 X 1-INCH STAINLESS STEEL SHEET METAL SCREWS.

TOTAL ESTIMATED QUANTITIES

BID ITEM NUMBER	BID ITEMS	UNIT	SUPER.	NORTH ABUT.	PIER 1	PIER 2	SOUTH ABUT.	TOTALS
203.0220	REMOVING STRUCTURE B-29-21	EACH						1
206.0000	EXCAVATION FOR STRUCTURES BRIDGES B-29-21	LS						1
210.1500	BACKFILL STRUCTURE TYPE A	TON		40			40	80
502.0100	CONCRETE MASONRY BRIDGES	CY		11			11	22
502.3101	EXPANSION DEVICE B-29-21	LF		32			32	64
502.3200	PROTECTIVE SURFACE TREATMENT	SY	43					43
502.3210	PIGMENTED SURFACE SEALER	SY	29					29
502.4100	ADHESIVE ANCHORS 1 1/4-INCH	EACH		8			8	16
502.4205	BAR STEEL REINFORCEMENT HS COATED STRUCTURES	LB	2,220	1,540			102	204
506.6000	BEARING ASSEMBLIES EXPANSION B-29-21	EACH		4			4	8
506.7050.5	REMOVING BEARINGS B-29-21	EACH		4			4	8
509.0501	PREPARATION DECK TYPE 1	SY	2					2
509.0310.5	SAWING PAVEMENT DECK PREPARATION AREAS	LF	24					24
509.1000	JOINT REPAIR	SY	25					25
509.1500	CONCRETE SURFACE REPAIR	SF	10	8	30		6	86
509.2100.5	CONCRETE MASONRY DECK REPAIR	CY	11					11
535.9006.5	REMOVING AND RESETTING TUBULAR RAILING B-29-21	EACH	1					1
516.0500	RUBBERIZED MEMBRANE WATERPROOFING	SY		8			8	16
517.3001.5	STRUCTURE OVERCOATING CLEANING AND PRIMING B-29-21	EACH	1					1
517.4001.5	CONTAINMENT AND COLLECTION OF WASTE MATERIALS B-29-21	EACH	1					1
612.0406	PIPE UNDERDRAIN WRAPPED 6-INCH	LF		72			72	144
614.0150	ANCHOR ASSEMBLIES FOR STEEL PLATE BEAM GUARD	EACH		2			2	4
645.0311	GEOTEXTILE TYPE DF SCHEDULE A	SY		31			31	62
	NON-BID ITEMS							
	BRIDGE SEAT PROTECTION	LS						1

* ESTIMATED PAINTING AREA IS 83 SF

3/22 REVISION GEN. NOTES & BID ITEMS
NO. DATE REVISION BY

STATE OF WISCONSIN
DEPARTMENT OF TRANSPORTATION
STRUCTURES DESIGN SECTION
STRUCTURE B-29-21

CROSS SECTION & QUANTITIES

39

PLANS
BY: MMB
ARC.C.D.: MMB

SHEET 2

STATE PROJECT NUMBER
1016-05-66

DESIGN DATA

LIVE LOAD: INVENTORY RATING: HS-09
OPERATING RATING: HS-16
DESIGN SPEED: 55 MPH (FROM HS)
08/09/2018 RATING FROM HS)

MATERIAL PROPERTIES:
CONCRETE MASONRY - ALL $f_c = 3,500$ P.S.I.
BAR STEEL REINFORCEMENT, GRADE 60 $f_y = 60,000$ P.S.I.
STRUCTURAL CARBON STEEL:
ASTM A703, GRADE 36 $f_y = 36,000$ P.S.I.

TRAFFIC VOLUME

KOVAL ROAD
R.D.S. = 55 M.P.H.
I.H. 90/294
A.D.T. = 44,180 (2042)
R.D.S. = 70 M.P.H.

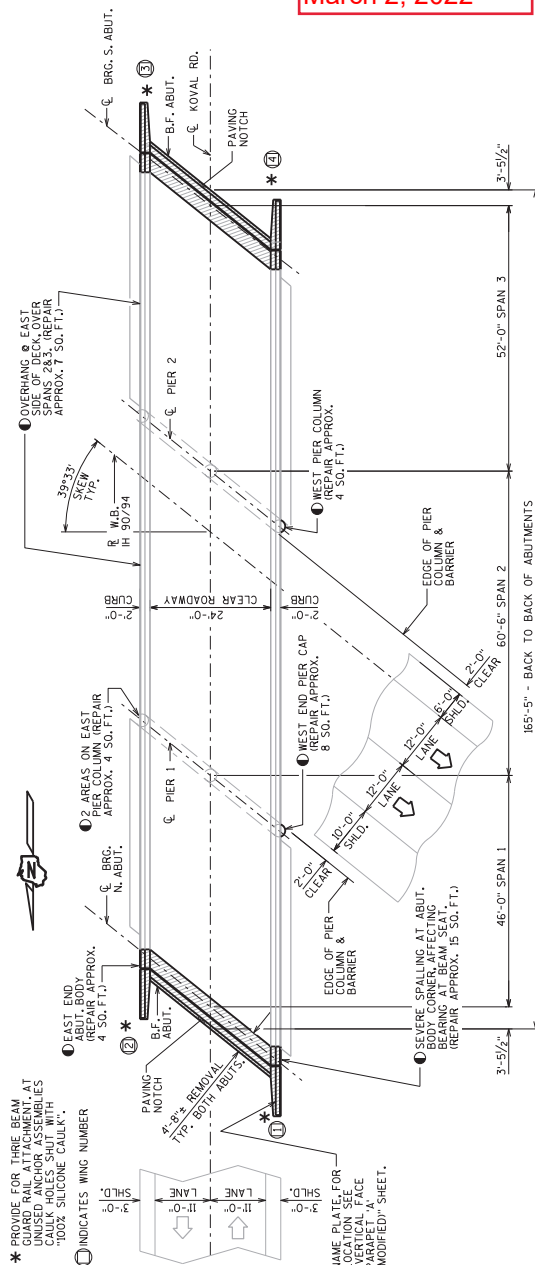
LEGEND

● CONCRETE SURFACE REPAIR REQUIRED. LOCATIONS NOTED IN PLANS MAY NOT BE ALL INCLUSIVE. QUANTITIES SHOWN ON SHEET 2 ARE APPROXIMATE. ADDITIONAL REPAIRS MAY BE REQUIRED DURING CONSTRUCTION AND SHOULD BE PERFORMED AS DIRECTED BY THE FIELD ENGINEER.

LIST OF DRAWINGS

1. GENERAL PLAN, QUANTITIES
2. CROSS-SECTION & DETAILS
3. BEARING REPLACEMENT DETAILS
4. ABUT. BACKWALL & JOINT REPAIR DETAILS
5. NORTH ABUT. BACKWALL & WING REPAIR DETAILS
6. SOUTH ABUT. BACKWALL & WING REPAIR DETAILS
7. EXPANSION DEVICES
8. CURB COVER PLATE DETAILS
9. CURB COVER PLATE DETAILS 'A' (MODIFIED)
10. VERTICAL FACE PARAPET 'A' (MODIFIED)

Addendum No. 01
ID 1016-05-66
Revised Sheet 48
March 2, 2022



PLAN

3 SPAN - STEEL GIRDERS

165'-5" - BACK TO BACK OF ABUTMENTS

46'-0" SPAN 1

60'-6" SPAN 2

52'-0" SPAN 3

3'-9 1/2"

24'-0" CLEAR ROADWAY

12'-0" CLEAR

EDGE OF PIER COLUMN & BARRIER

EDGE OF PIER COLUMN & BARRIER

EDGE OF PIER COLUMN & BARRIER

SEVERE SPALLING AT ABUT. BODY CORNER, AFFECTING BEARING A BEAM SEALER (REPAIR APPROX. 15 SQ.F.T.)

WEST END PIER CAP REPAIR APPROX. 9 SQ.F.T.

WEST PIER COLUMN REPAIR APPROX. 4 SQ.F.T.

OVERHANG & EAST SIDE OF DECK OVER SPANS 2&3. REPAIR APPROX. 7 SQ.F.T.

REMOVE EXIST. STEEL EXPANSION DEVICE SEAL

REMOVE & REPLACE STEEL BEARINGS & ALL GIRDERS (TYP. BOTH ABUTS.)

ADD STRIP SEAL EXPANSION DEVICE

REMOVE RAILING & WINGS (TYP.)

EXIST. CONCRETE SLOPE PAVING (TYP.)

N. ABUT. BODY UNDER DECK (APPROX. 3 SQ.F.T.)

PIER 1 EAST COLUMN (APPROX. 4 SQ.F.T.) & WEST END PIER CAP (APPROX. 8 SQ.F.T.)

PIER 2 WEST COLUMN (APPROX. 4 SQ.F.T.)

OVERHANG & EAST SIDE OF DECK OVER SPANS 2&3. REPAIR APPROX. 7 SQ.F.T.

REMOVE ABUTMENT WINGS (TYP. BOTH ABUTS.) SEE REPAIR REMOVAL DETAILS SHEET.

SHEAR LUG - 15" x 5" x 3/4" SPA. @ 1'-6" (WITHIN DECK REMOVAL AREA)

ORDER WEB

BRG. STIFFENER (TYP.)

1/4" CONTINUOUS WELD

END OF GIRDER

BRG. S. ABUT.

B.F. ABUT.

PILING NOTCH

R. W.B. IH 90/294

39" x 39" SKEW TYP.

OVERHANG & EAST SIDE OF DECK OVER SPANS 2&3. REPAIR APPROX. 7 SQ.F.T.

ORDER WEB

BRG. STIFFENER (TYP.)

1/4" CONTINUOUS WELD

END OF GIRDER

BRG. S. ABUT.

B.F. ABUT.

ELEVATION

NORMAL TO IH 90/94

3 SPAN - STEEL GIRDERS

165'-5" - BACK TO BACK OF ABUTMENTS

46'-0" SPAN 1

60'-6" SPAN 2

52'-0" SPAN 3

3'-9 1/2"

24'-0" CLEAR ROADWAY

12'-0" CLEAR

EDGE OF PIER COLUMN & BARRIER

EDGE OF PIER COLUMN & BARRIER

EDGE OF PIER COLUMN & BARRIER

SEVERE SPALLING AT ABUT. BODY CORNER, AFFECTING BEARING A BEAM SEALER (REPAIR APPROX. 15 SQ.F.T.)

WEST END PIER CAP REPAIR APPROX. 9 SQ.F.T.

WEST PIER COLUMN REPAIR APPROX. 4 SQ.F.T.

OVERHANG & EAST SIDE OF DECK OVER SPANS 2&3. REPAIR APPROX. 7 SQ.F.T.

REMOVE EXIST. STEEL EXPANSION DEVICE SEAL

REMOVE & REPLACE STEEL BEARINGS & ALL GIRDERS (TYP. BOTH ABUTS.)

ADD STRIP SEAL EXPANSION DEVICE

REMOVE RAILING & WINGS (TYP.)

EXIST. CONCRETE SLOPE PAVING (TYP.)

N. ABUT. BODY UNDER DECK (APPROX. 3 SQ.F.T.)

PIER 1 EAST COLUMN (APPROX. 4 SQ.F.T.) & WEST END PIER CAP (APPROX. 8 SQ.F.T.)

PIER 2 WEST COLUMN (APPROX. 4 SQ.F.T.)

OVERHANG & EAST SIDE OF DECK OVER SPANS 2&3. REPAIR APPROX. 7 SQ.F.T.

REMOVE ABUTMENT WINGS (TYP. BOTH ABUTS.) SEE REPAIR REMOVAL DETAILS SHEET.

SHEAR LUG - 15" x 5" x 3/4" SPA. @ 1'-6" (WITHIN DECK REMOVAL AREA)

ORDER WEB

BRG. STIFFENER (TYP.)

1/4" CONTINUOUS WELD

END OF GIRDER

BRG. S. ABUT.

B.F. ABUT.

PILING NOTCH

R. W.B. IH 90/294

39" x 39" SKEW TYP.

OVERHANG & EAST SIDE OF DECK OVER SPANS 2&3. REPAIR APPROX. 7 SQ.F.T.

ORDER WEB

BRG. STIFFENER (TYP.)

1/4" CONTINUOUS WELD

END OF GIRDER

BRG. S. ABUT.

B.F. ABUT.

GENERAL NOTES

DRAWINGS SHALL NOT BE SCALED.

BAR STEEL REINFORCEMENT SHALL BE EMBEDDED 2" CLEAR UNLESS OTHERWISE SHOWN OR NOTED. THE FIRST OR FIRST TWO DIGITS OF THE BAR MARK SIGNIFIES THE BAR SIZE.

BEVEL EXPOSED EDGES OF CONCRETE 3/4" UNLESS OTHERWISE NOTED.

THE UPPER LIMITS OF EXCAVATION FOR STRUCTURES B-29-22 SHALL BE THE EXISTING GROUNDLINE.

AT THE BACK FACE OF ABUTMENT ALL VOLUME WHICH CANNOT BE PLACED BEFORE ABUTMENT CONSTRUCTION AND IS NOT OCCUPIED BY THE NEW STRUCTURE SHALL BE BACKFILLED WITH STRUCTURE BACKFILL TYPE A.

THE QUANTITY FOR BACKFILL STRUCTURE IS CALCULATED BASED ON THE DETAIL SHOWN IN THE PLANS.

AT JOINT REPAIR AREAS PROTECTIVE SURFACE TREATMENT TO BE APPLIED TO THE ENTIRE EXPOSED SURFACE OF VERTICAL & HORIZONTAL SURFACES OF THE PAVING NOTCHES AT ABUTMENT BACKWALLS & DIAPHRAGMS.

PAVED SURFACE SEALER TO BE APPLIED TO THE FRONT FACE AND THE TOP OF CURB & PARAPETS ON WINGS. ALSO APPLY PROMOTED SURFACE SEALER TO END OF CURB & PARAPET AT WING TIP.

REMOVE EXISTING RAILING ON THE REMOVED LENGTH OF DECK & ABUT WING PARAPETS. BID ITEM "REMOVING & RESETTING TUBULAR RAILING B-29-22" INCLUDES TEMPORARILY REMOVING & RESETTING EXISTING ALUMINUM POSTS AND TUBES AFTER REPLACEMENTS ARE COMPLETED. NEW ANCHOR BOLTS & SHIMS REQUIRED IN DECK. REMOVAL LIMITS ALSO INCLUDED IN BID ITEM "REMOVING & RESETTING TUBULAR RAILING B-29-22".

GENERAL NOTES (CONT.)

APPLY BRIDGE SEAT PROTECTION AS PER SECTION 502.3.12 OF THE STANDARD SPECIFICATIONS, TO THE TOP SURFACES OF BOTH ABUTMENTS BELOW EXPANSION DEVICES. DIMENSIONS SHOWN ARE BASED ON THE ORIGINAL STRUCTURE PLANS.

CLEAN & PAINT ABUTMENT END DIAPHRAGMS AT BACKWALL. SURFACE OF DIAPHRAGM AFTER CLEANING TO MEET CLEANLINESS STANDARD SSPC-SP-3. THE COLOR OF PAINT IS GRAY (AMS STANDARD COLOR NO. 28933) OR SIMILAR COLOR APPROVED BY THE ENGINEER.

THE CONTRACTOR SHALL SUPPLY A NEW NAME PLATE IN ACCORDANCE WITH SECTION 502.3.11 OF THE STANDARD SPECIFICATIONS AND THE STANDARD DETAIL DRAWINGS. NAME PLATE TO SHOW ORIGINAL CONSTRUCTION YEAR 1962.

CONCRETE FOR JOINT REPAIR LOCATIONS ARE PAID FOR UNDER BID ITEM "CONCRETE MASONRY WING REPLACEMENT, AND 7'-6" TALL PARAPET ON ABUTMENT BLOCK FOR JOINT REPAIR, UPPER ITEM "CONCRETE MASONRY BRIDGES".

SHEAR LUG DETAIL

(TYP. - ALL GIRDERS @ EACH ABUTMENT)
(MATERIAL - STRUCTURAL STEEL CARBON)

STRUCTURE DESIGN CONTACTS:
ALEXANDER CRABTREE (608) 266-3686
LAURA SHADEWALD (608) 287-9592

NO.	DATE	REVISE GEN. NOTES & BID ITEMS	ARC	BY
1				
2	3/1/22			



ACCEPTED
STRUCTURE B-29-22
CHIEF STRUCTURES DESIGN ENGINEER

KOVAL RD. OVER W.B. IH 90/94
COUNTY JUNEAU TOWN LYNDON STATION

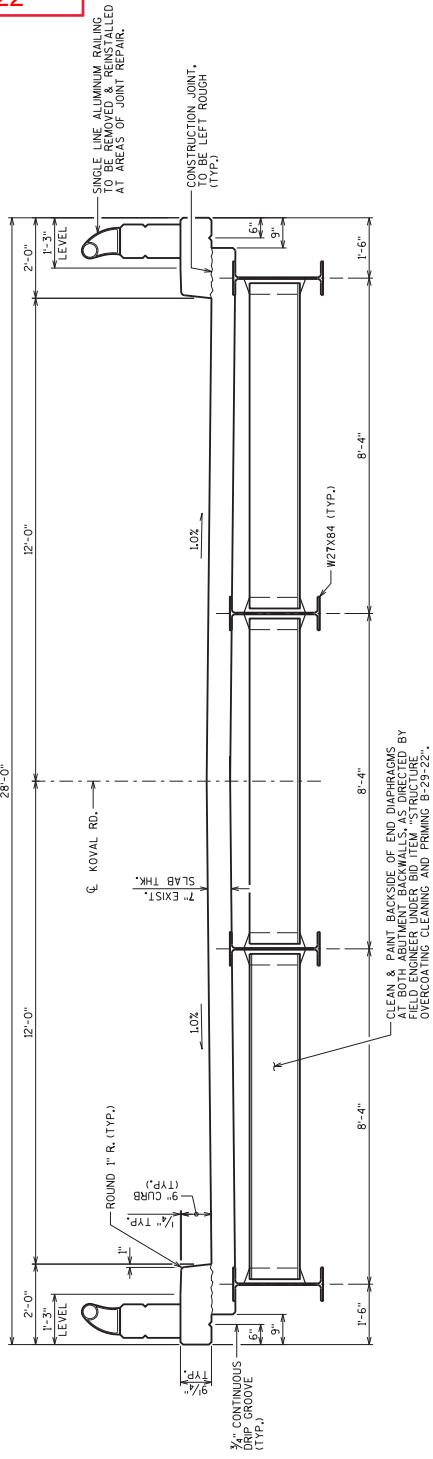
DESIGN SPEC. NO. 1024
REVISION NO. 14
DESIGNED BY DR. BRANN
CHECKED BY JWB
APPROVED BY MVB

GENERAL PLAN
SHEET 1 OF 10
48

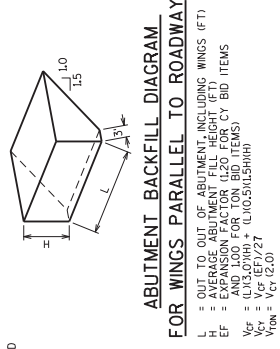
ID: 1016-05-348
DATE: JAN 2022

STATE PROJECT NUMBER
1016-05-66

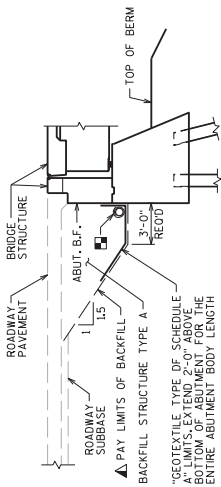
Addendum No. 01
ID 1016-05-66
Revised Sheet 49
March 2, 2022



CROSS SECTION THRU ROADWAY
(LOOKING NORTH)

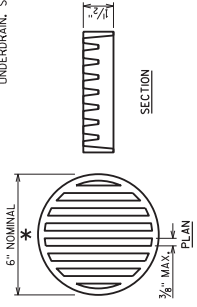


ABUTMENT BACKFILL DIAGRAM
FOR WINGS PARALLEL TO ROADWAY



TYPICAL SECTION
THRU ABUTMENTS

- ▲ BACKFILL PAY LIMITS: BACKFILL BEYOND BACKFILL PAY LIMITS SHALL BE INCIDENTAL TO EXCAVATION FOR STRUCTURES; LIMITS OF EXCAVATION SHALL BE DETERMINED BY THE CONTRACTOR.
- PIPE UNDERDRAIN WRAPPED (6 INCH SLOPE 0.5% MIN. TO SUITABLE DRAINAGE); ATTACH RODENT SHIELD AT ENDS OF PIPE UNDERDRAIN. SEE DETAIL THIS SHEET.



RODENT SHIELD DETAIL

* DIMENSIONS ARE APPROXIMATE; THE GRATE IS SIZED TO FIT INTO A PIPE COUPLING; ORIENT 50 SLOTS ARE VERTICAL.

THE RODENT SHIELD, PIPE COUPLING AND SCREWS SHALL BE CONSIDERED INCIDENTAL TO THE BID ITEM PIPE UNDERDRAIN WRAPPED 6 INCH.

THE RODENT SHIELD SHALL BE A PVC GRATE SIMILAR TO THIS DETAIL. THE RODENT SHIELD SHALL BE FASTENED TO THE PIPE UNDERDRAIN PIPE COUPLING END OF THE PIPE UNDERDRAIN. THE SHIELD SHALL BE FASTENED TO THE PIPE COUPLING WITH TWO OR MORE NO. 10 X 1-INCH STAINLESS STEEL SHEET METAL SCREWS.

TOTAL ESTIMATED QUANTITIES

BID ITEM NUMBER	BID ITEMS	UNIT	SUPER.	NORTH ABUT.	PIER 1	PIER 2	SOUTH ABUT.	TOTALS
203.0220	REMOVING STRUCTURE B-29-22	EACH	---	---	---	---	---	1
206.0000	EXCAVATION FOR STRUCTURES BRIDGES B-29-22	LS	---	---	---	---	---	---
210.1500	BACKFILL STRUCTURE TYPE A	TON	---	38	---	---	38	76
502.0000	CONCRETE MASONRY BRIDGES	CY	---	11	---	---	11	22
502.3101	EXPANSION DEVICE B-29-22	LF	---	32	---	---	32	64
502.3200	PROTECTIVE SURFACE TREATMENT	SY	42	---	---	---	---	42
502.3210	PIGMENTED SURFACE SEALER	SY	29	---	---	---	---	29
502.4100	ADHESIVE ANCHORS 1 1/4-INCH	EACH	---	8	---	---	8	16
502.4205	ADHESIVE ANCHORS NO. 5 BAR	EACH	---	102	---	---	102	204
505.0600	BAR STEEL REINFORCEMENT HS COATED STRUCTURES	LB	2,180	1,520	---	---	1,550	5,230
506.6000	BEARING ASSEMBLIES EXPANSION B-29-22	EACH	---	4	---	---	4	8
506.7050.S	REMOVING SURFACE REPAIR	SY	25	---	---	---	---	25
509.1000	CONCRETE SURFACE REPAIR	SF	7	19	12	4	3	45
509.200.S	CONCRETE MASONRY DECK REPAIR	CY	11	---	---	---	---	11
513.9006.S	REMOVING AND RESETTING TUBULAR RAILING B-29-22	EACH	1	---	---	---	---	1
516.0500	RUBBERIZED MEMBRANE WATERPROOFING	SY	---	8	---	---	8	16
517.3001.S	STRUCTURE OVERCOATING CLEANING AND PRIMING B-29-22	EACH	1	---	---	---	---	1
517.3001.S	CONTAINMENT AND COLLECTION OF WASTE MATERIALS B-29-22	EACH	1	---	---	---	---	1
612.0406	PIPE UNDERDRAIN WRAPPED 6-INCH	LF	---	71	---	---	71	142
614.0150	ANCHOR ASSEMBLIES FOR STEEL PLATE BEAM GUARD	EACH	---	2	---	---	2	4
645.0111	GEOTEXTILE TYPE DF SCHEDULE A	SY	---	30	---	---	30	60
	BRIDGE SEAT PROTECTION	LS	---	---	---	---	---	1

☆ ESTIMATED PAINTING AREA IS 81 SF

3/22 REVISION NO. DATE

REVISION BY

STATE OF WISCONSIN
DEPARTMENT OF TRANSPORTATION
STRUCTURES DESIGN SECTION

STRUCTURE B-29-22

PLANS BY: MMB
CHECKED BY: MMB

CROSS SECTION & QUANTITIES

SHEET 2

49



Proposal Schedule of Items

Proposal ID: 20220308002 Project(s): 1016-05-64, 1016-05-66

Federal ID(s): N/A, N/A

SECTION: 0001

Contract Items

Alt Set ID:

Alt Mbr ID:

Proposal Line Number	Item ID Description	Approximate Quantity and Units	Unit Price	Bid Amount
0156	643.1050 Traffic Control Signs PCMS	30.000 DAY	_____.	_____.
0158	643.5000 Traffic Control	1.000 EACH	_____.	_____.
0160	645.0111 Geotextile Type DF Schedule A	122.000 SY	_____.	_____.
0162	645.0120 Geotextile Type HR	30.000 SY	_____.	_____.
0164	650.9910 Construction Staking Supplemental Control (project) 01. 1016-05-64	LS	LUMP SUM	_____.
0166	650.9910 Construction Staking Supplemental Control (project) 02. 1016-05-66	LS	LUMP SUM	_____.
0168	690.0150 Sawing Asphalt	145.000 LF	_____.	_____.
0170	715.0502 Incentive Strength Concrete Structures 01. B-29-21	300.000 DOL	1.00000	300.00
0172	715.0502 Incentive Strength Concrete Structures 02. B-29-22	300.000 DOL	1.00000	300.00
0174	SPV.0060 Special 01. Cleaning and Painting Bearings	8.000 EACH	_____.	_____.
0176	203.0220 Removing Structure (structure) 01. B-29-21	1.000 EACH	_____.	_____.
0178	203.0220 Removing Structure (structure) 02. B-29-22	1.000 EACH	_____.	_____.
Section: 0001			Total:	_____.
			Total Bid:	_____.