



Wisconsin Department of Transportation

February 28, 2022

Division of Transportation Systems Development

Bureau of Project Development
4822 Madison Yards Way, 4th Floor South
Madison, WI 53705

Telephone: (608) 266-1631
Facsimile (FAX): (608) 266-8459

NOTICE TO ALL CONTRACTORS:

Proposal #10: 6996-05-28, WISC 2022234
City of Portage, Portage Canal
Adams Street to CP Railway Bridge
Non Hwy
Columbia County

Letting of March 8, 2022

This is Addendum No. 01, which provides for the following:

Schedule of Items:

Revised Bid Item Quantities					
Bid Item	Item Description	Unit	Old Quantity	Revised Quantity	Proposal Total
465.0105	Asphaltic Surface	Ton	10	617	627

Deleted Bid Item Quantities					
Bid Item	Item Description	Unit	Old Quantity	Revised Quantity	Proposal Total
460.5224	HMA Pavement 4 LT 58-28 S	Ton	617	-617	0
460.2000	Incentive Density HMA Pavement	Dol	400	-400	0

Plan Sheets:

Revised Plan Sheets	
Plan Sheet	Plan Sheet Title (brief description of changes to sheet)
5-7	Typical Sections (Revised HMA Pavement 4 LT 58-28 S to Asphaltic Surface)
8	Construction Details (Revise edge of pavement label)
15	Curb Ramp Details (Changed HMA Pavement to Asphaltic Surface)
27	Miscellaneous Quantities (Removed HMA Pavement and added to Asphaltic Surface)

Schedule of Items

Attached, dated February 28, 2022, are the revised Schedule of Items Pages 1 – 6.

Plan Sheets

The following 8½ x 11-inch sheets are attached and made part of the plans for this proposal:

Revised: 5 – 8, 15, and 27.

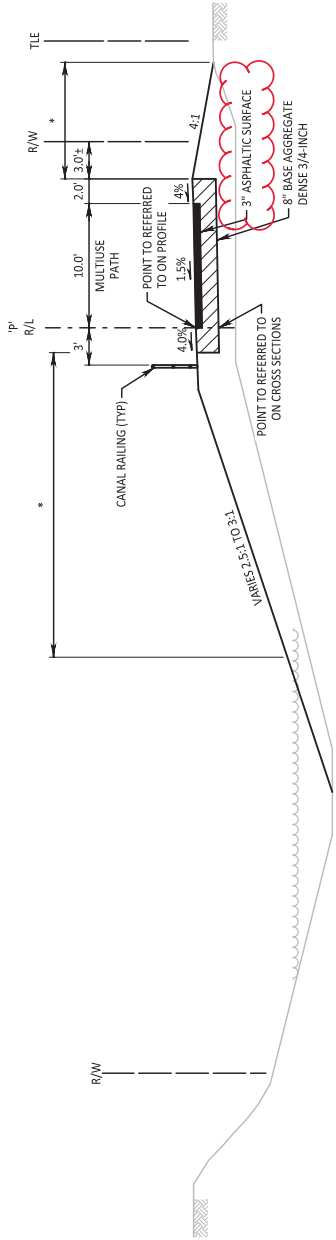
The responsibility for notifying potential subcontractors and suppliers of these changes remains with the prime contractor.

Sincerely,

Mike Coleman

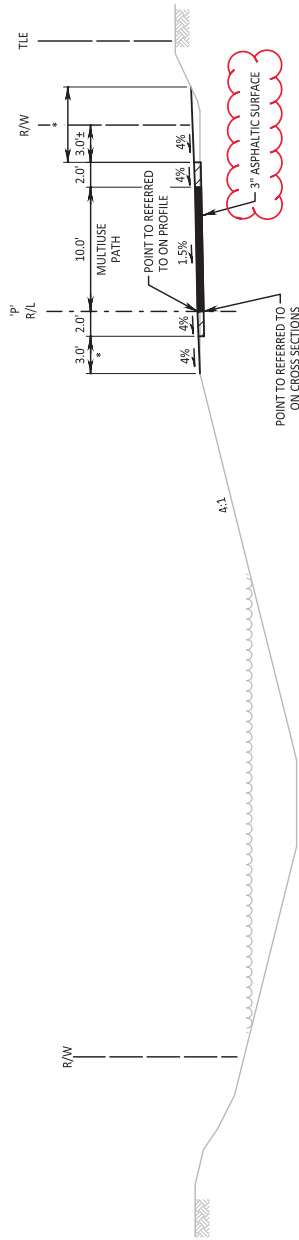
Proposal Development Specialist
Proposal Management Section

END OF ADDENDUM



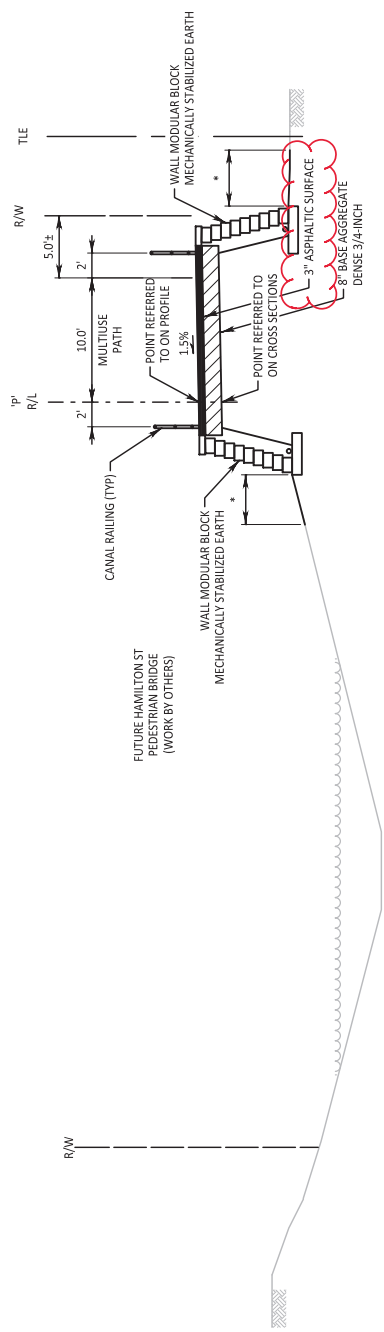
TYPICAL FINISHED SECTION
PORTAGE CANAL
STA 126+10.00 TO STA 126+60.00

Addendum No. 01
ID 6996-05-28
Revised Sheet 5
February 28, 2022

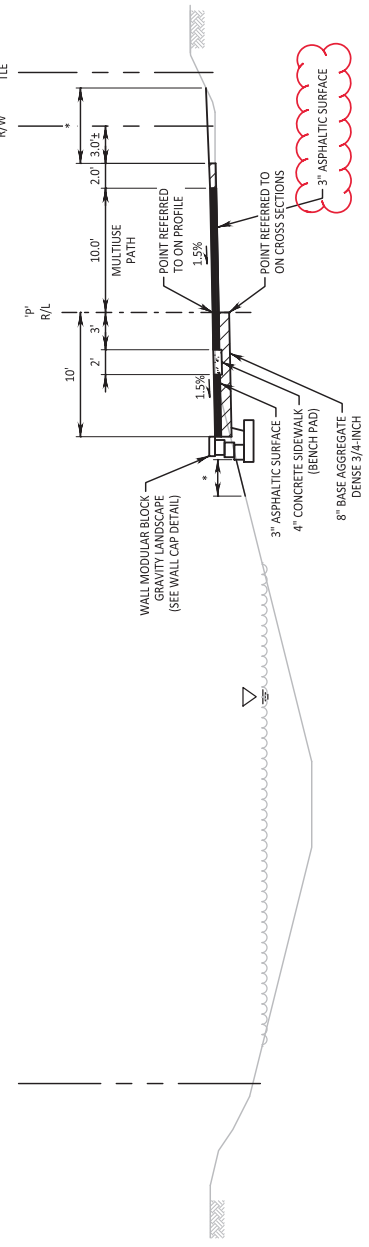


TYPICAL FINISHED SECTION
PORTAGE CANAL
STA 126+70.00 TO STA 140+70.80
STA 143+65.81 TO STA 147+30.00
STA 148+85.00 TO STA 155+20.80

* LIMITS OF TOPSOIL, SEEDING MIXTURE #40 & EROSION MAT
URBAN CLASS I TYPE A



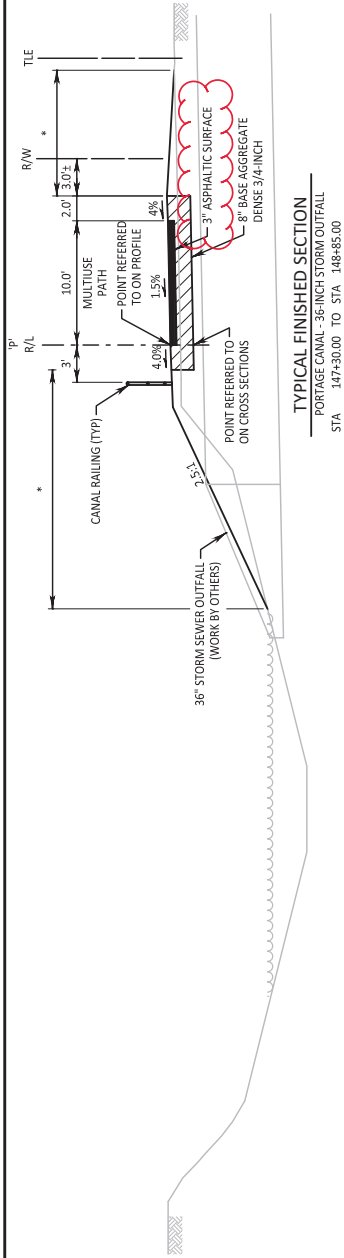
TYPICAL FINISHED SECTION
 PORTAGE CANAL
 STA 141+10.00 TO STA 143+20.00



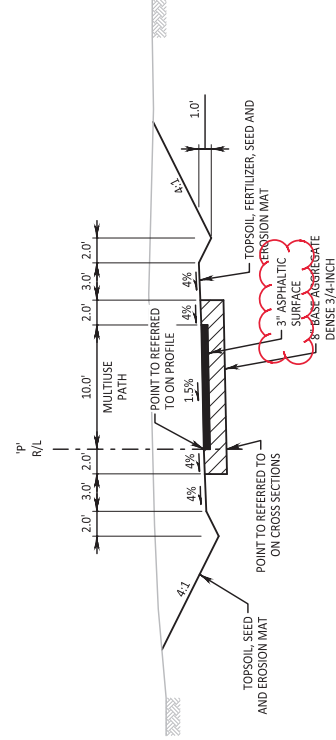
TYPICAL FINISHED SECTION
 PORTAGE CANAL - BENCH BUMP OUT
 STA 127+20.00 TO STA 127+42.00
 STA 131+64.00 TO STA 131+86.00
 STA 146+39.00 TO STA 146+61.00
 STA 154+92.74 TO STA 155+14.74

Addendum No. 01
 ID 6996-05-28
 Revised Sheet 6
 February 28, 2022

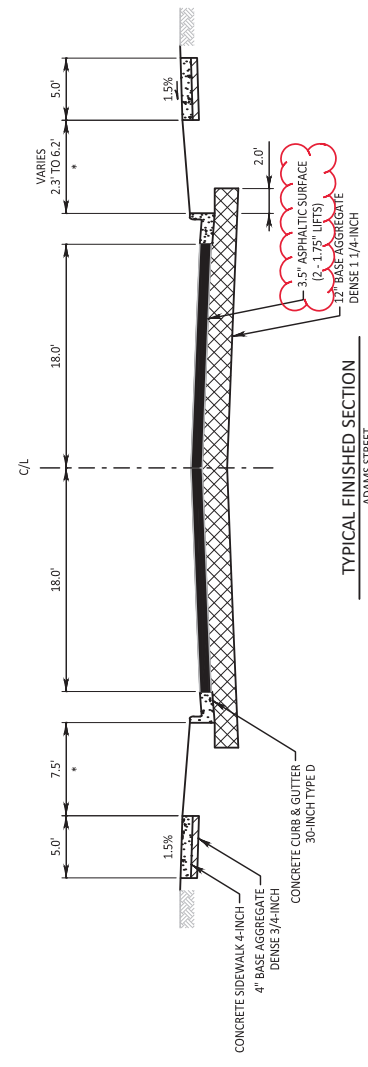
* LIMITS OF TOPSOIL SEEDING MIXTURE #40 & EROSION MAT
 URBAN CLASS | TYPE A



TYPICAL FINISHED SECTION
 PORTAGE CANAL - 36-INCH STORM OUTFALL
 STA 147+30.00 TO STA 148+85.00



TYPICAL FINISHED SECTION
 PORTAGE CANAL - MULLETT STREET TRAILHEAD
 STA 5+10.00 TO STA 6+48.87

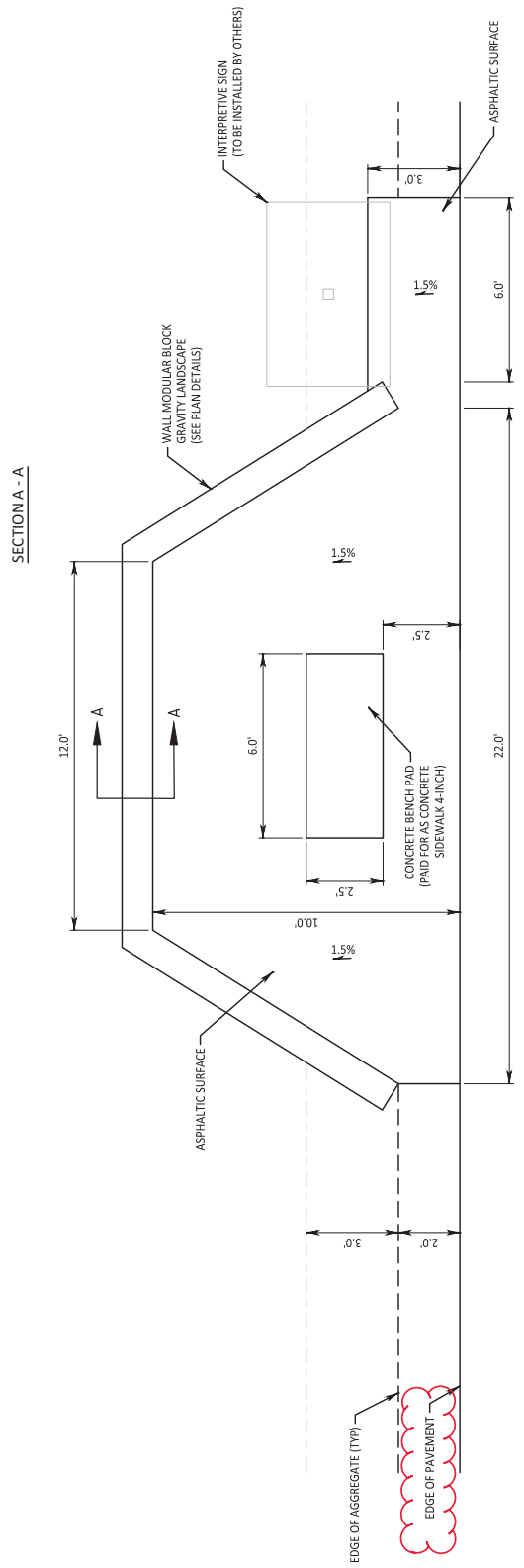
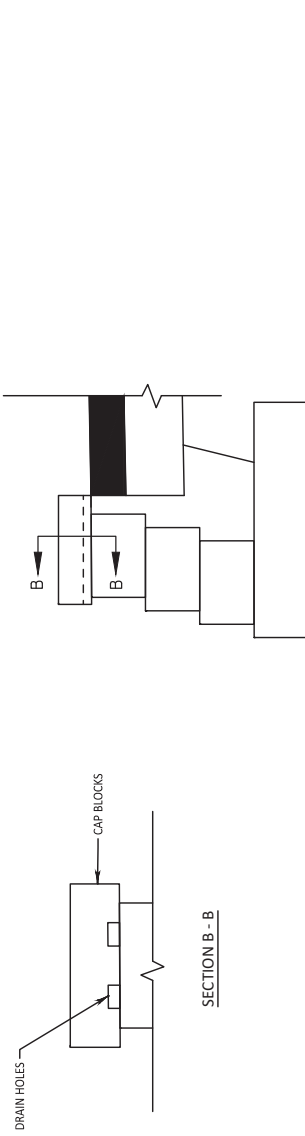


TYPICAL FINISHED SECTION
 ADAMS STREET
 STA 125+40.00 TO STA 126+05.00

Addendum No. 01
 ID 6996-05-28
 Revised Sheet 7
 February 28, 2022

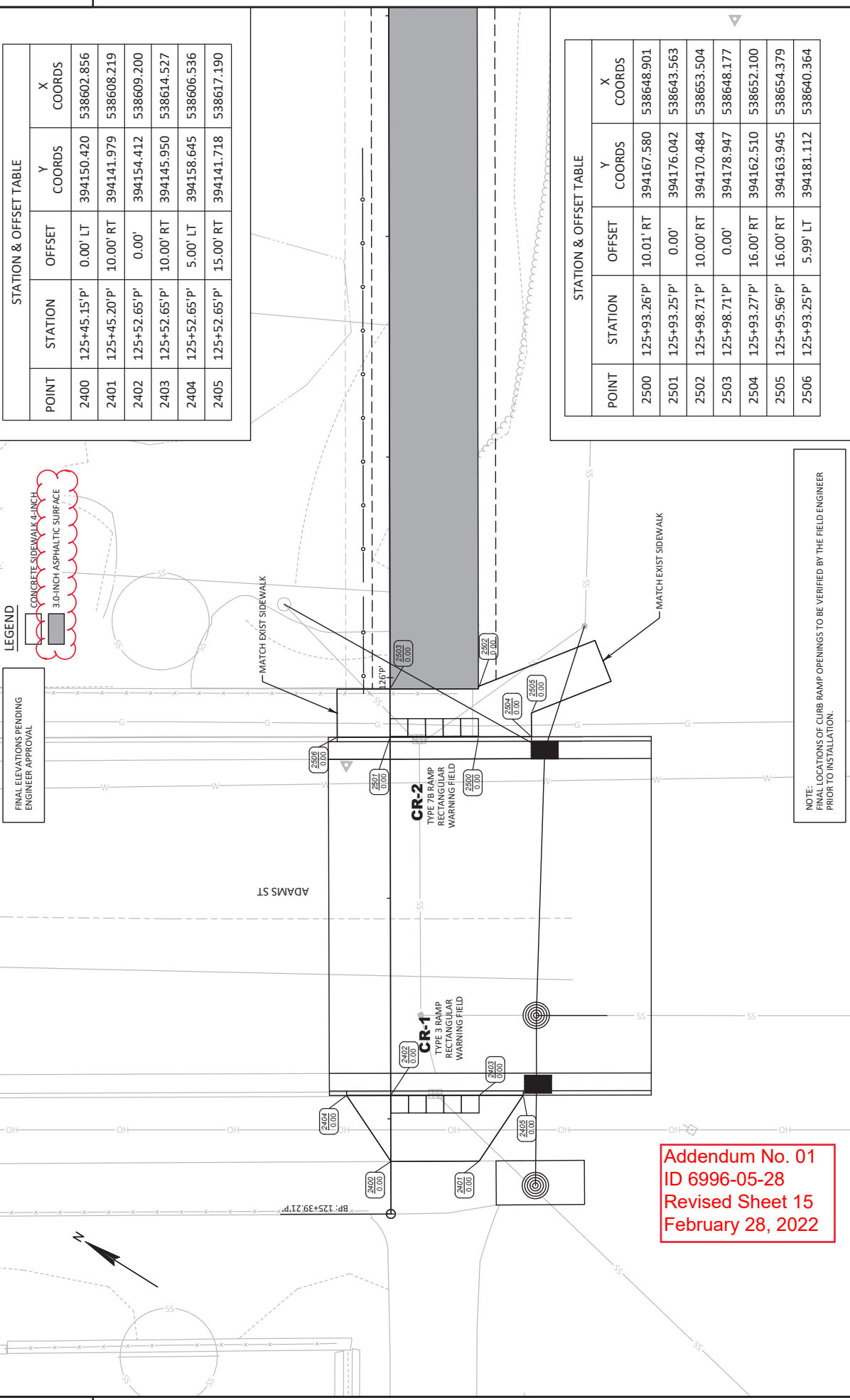
* LIMITS OF TOPSOIL SEEDING MIXTURE #40 & EROSION MAT
 URBAN CLASS I TYPE A

ASPHALTIC SURFACE PAVING FOR INTERPRETIVE SIGN TO BE PLACED ADJACENT TO BUMP OUT OPPOSITE OF LIGHT POLE PLACEMENT.
 PAVEMENT CROSS SLOPE SHALL BE LESS THAN 2% IN ORDER TO MEET ADA REQUIREMENTS.
 CONFIRM THE PLACEMENT AND FINAL DIMENSIONS OF INTERPRETIVE SIGNS WITH THE CITY OF PORTAGE PRIOR TO THE PAVING OF ASPHALTIC SURFACE.



DECORATIVE BENCH BUMP OUT DETAIL

Addendum No. 01
 ID 6996-05-28
 Revised Sheet 8
 February 28, 2022



LEGEND

- FINAL ELEVATIONS PENDING ENGINEER APPROVAL
- CONCRETE SIDEWALK 4-INCH
- 3.0-INCH ASPHALTIC SURFACE

STATION & OFFSET TABLE

POINT	STATION	OFFSET	Y COORDS	X COORDS
2400	125+45.15'P'	0.00' LT	394150.420	538602.856
2401	125+45.20'P'	10.00' RT	394141.979	538608.219
2402	125+52.65'P'	0.00'	394154.412	538609.200
2403	125+52.65'P'	10.00' RT	394145.950	538614.527
2404	125+52.65'P'	5.00' LT	394158.645	538606.536
2405	125+52.65'P'	15.00' RT	394141.718	538617.190

STATION & OFFSET TABLE

POINT	STATION	OFFSET	Y COORDS	X COORDS
2500	125+93.26'P'	10.01' RT	394167.580	538648.901
2501	125+93.25'P'	0.00'	394176.042	538643.563
2502	125+98.71'P'	10.00' RT	394170.484	538653.504
2503	125+98.71'P'	0.00'	394178.947	538648.177
2504	125+93.27'P'	16.00' RT	394162.510	538652.100
2505	125+95.96'P'	16.00' RT	394163.945	538654.379
2506	125+93.25'P'	5.99' LT	394181.112	538640.364

NOTE: FINAL LOCATIONS OF CURB RAMP OPENINGS TO BE VERIFIED BY THE FIELD ENGINEER PRIOR TO INSTALLATION.

Addendum No. 01
ID 6996-05-28
Revised Sheet 15
February 28, 2022

CLEARING & GRUBBING		REMOVING ITEMS		EXCAVATION COMMON		BASE AGGREGATE	
STATION - STATION	THICKNESS (IN)	REMOVING CONCRETE	REMOVING MANHOLES	STATION - STATION	COMMON (CY)	BASE AGGREGATE DENSE 3/4-INCH	BASE AGGREGATE DENSE 1 1/4-INCH
130+00 - 132+00	2	204.0155	204.0210	204.0245.01	205.0100	305.0110	604.0100
139+00 - 140+00	1	204.0150	204.0220	204.0245.01	530	693	13.9
TOTALS	3	74	23	48	530	700	17

ASPHALT ITEMS		STORM SEWER		CONCRETE ITEMS	
LOCATION	THICKNESS (IN)	APRON ENDWALLS	MANHOLE COVERS	CONCRETE	CONCRETE
ADAMS ST	3.5	522.1018	611.0530	601.0411	602.0405
PEDESTRIAN PATH	3	520.8000	608.0918	CONCRETE CURB & GUTTER	CONCRETE SIDEWALK
BUMP OUTS	3	520.8000	608.3612	30-INCH TYPE D	4-INCH (SF)
TOTALS	7	2	27	37	162

EROSION CONTROL & FINISHING ITEMS		TRAFFIC CONTROL	
LOCATION	AREA (SF)	BARBICADES TYPE II	BARBICADES TYPE III
ADAMS ST	186	643.0410	643.0420
LEFT SIDE OF PATH	26726	643.0705	643.0900
RIGHT SIDE OF PATH	21835	643.0705	643.0900
UNDISTRIBUTED QTY	9713	643.0705	643.0900
PROJECT TOTAL	5103	84	150

WARRANTY FIELDS		SIGNING ITEMS	
LOCATION	THICKNESS (IN)	STATION	SIZE (INCH)
ADAMS ST WEST RAMP	20	125+35	18 X 18
ADAMS ST EAST RAMP	20	126+00	18 X 18
MULLETT ST RAMP	20	648	18 X 18
PROJECT TOTALS	60	3	5.58

WATER		SEED	
LOCATION	NO. 40	NO. 40	NO. 40
ADAMS ST	37	162	162
ADAMS ST	37	173	173
MULLETT ST	110	110	110
BUMP OUTS	60	60	60
PROJECT TOTALS	74	515	515

Addendum No. 01
ID 6996-05-28
Revised Sheet 27
February 28, 2022

EROSION CONTROL MOBILIZATION		TRAFFIC CONTROL	
LOCATION	EROSION CONTROL	BARBICADES TYPE II	BARBICADES TYPE III
ADAMS ST	3	643.0410	643.0420
PROJECT TOTALS	3	84	150

EROSION CONTROL MOBILIZATION		TRAFFIC CONTROL	
LOCATION	EROSION CONTROL	BARBICADES TYPE II	BARBICADES TYPE III
ADAMS ST	3	643.0410	643.0420
PROJECT TOTALS	3	84	150

EROSION CONTROL MOBILIZATION		TRAFFIC CONTROL	
LOCATION	EROSION CONTROL	BARBICADES TYPE II	BARBICADES TYPE III
ADAMS ST	3	643.0410	643.0420
PROJECT TOTALS	3	84	150

EROSION CONTROL MOBILIZATION		TRAFFIC CONTROL	
LOCATION	EROSION CONTROL	BARBICADES TYPE II	BARBICADES TYPE III
ADAMS ST	3	643.0410	643.0420
PROJECT TOTALS	3	84	150

EROSION CONTROL MOBILIZATION		TRAFFIC CONTROL	
LOCATION	EROSION CONTROL	BARBICADES TYPE II	BARBICADES TYPE III
ADAMS ST	3	643.0410	643.0420
PROJECT TOTALS	3	84	150

PROJECT NO: 6996-05-28
COUNTY: COLUMBIA
HWY: PORTAGE CANAL

PROJECT TOTALS 74 515

PROJECT TOTALS 42 150

PROJECT TOTALS 3 5.58

PROJECT TOTALS 74 515

PROJECT TOTALS 42 150

PROJECT NO: 6996-05-28
COUNTY: COLUMBIA
HWY: PORTAGE CANAL

PROJECT TOTALS 74 515

PROJECT TOTALS 42 150

PROJECT TOTALS 3 5.58

PROJECT TOTALS 74 515

PROJECT TOTALS 42 150



Proposal Schedule of Items

Proposal ID: 20220308010 Project(s): 6996-05-28

Federal ID(s): WISC 2022234

SECTION: 0001 Contract Items

Alt Set ID: Alt Mbr ID:

Proposal Line Number	Item ID Description	Approximate Quantity and Units	Unit Price	Bid Amount
0002	201.0105 Clearing	3.000 STA	_____.	_____.
0004	201.0205 Grubbing	3.000 STA	_____.	_____.
0006	204.0150 Removing Curb & Gutter	74.000 LF	_____.	_____.
0008	204.0155 Removing Concrete Sidewalk	23.000 SY	_____.	_____.
0010	204.0210 Removing Manholes	1.000 EACH	_____.	_____.
0012	204.0220 Removing Inlets	2.000 EACH	_____.	_____.
0014	204.0245 Removing Storm Sewer (size) 01. 12-Inch	48.000 LF	_____.	_____.
0016	204.0245 Removing Storm Sewer (size) 02. 18-Inch	66.000 LF	_____.	_____.
0018	204.9090.S Removing (item description) 01. Removing Decorative Railing	15.000 LF	_____.	_____.
0020	205.0100 Excavation Common	530.000 CY	_____.	_____.
0022	213.0100 Finishing Roadway (project) 01. 6996-05-28	1.000 EACH	_____.	_____.
0024	305.0110 Base Aggregate Dense 3/4-Inch	700.000 TON	_____.	_____.
0026	305.0120 Base Aggregate Dense 1 1/4-Inch	127.000 TON	_____.	_____.
0028	455.0605 Tack Coat	7.000 GAL	_____.	_____.
0034	465.0105 Asphaltic Surface	627.000 TON	_____.	_____.
0036	520.8000 Concrete Collars for Pipe	2.000 EACH	_____.	_____.



Proposal Schedule of Items

Proposal ID: 20220308010 Project(s): 6996-05-28

Federal ID(s): WISC 2022234

SECTION: 0001 Contract Items

Alt Set ID: Alt Mbr ID:

Proposal Line Number	Item ID Description	Approximate Quantity and Units	Unit Price	Bid Amount
0038	522.1018 Apron Endwalls for Culvert Pipe Reinforced Concrete 18-Inch	1.000 EACH	_____.	_____.
0040	601.0411 Concrete Curb & Gutter 30-Inch Type D	74.000 LF	_____.	_____.
0042	602.0405 Concrete Sidewalk 4-Inch	515.000 SF	_____.	_____.
0044	602.0515 Curb Ramp Detectable Warning Field Natural Patina	60.000 SF	_____.	_____.
0046	608.0312 Storm Sewer Pipe Reinforced Concrete Class III 12-Inch	8.000 LF	_____.	_____.
0048	608.0318 Storm Sewer Pipe Reinforced Concrete Class III 18-Inch	72.000 LF	_____.	_____.
0050	608.3612 Storm Sewer Pipe Class III-B 12-Inch	27.000 LF	_____.	_____.
0052	611.0530 Manhole Covers Type J	2.000 EACH	_____.	_____.
0054	611.0624 Inlet Covers Type H	2.000 EACH	_____.	_____.
0056	611.2003 Manholes 3-FT Diameter	1.000 EACH	_____.	_____.
0058	611.2004 Manholes 4-FT Diameter	1.000 EACH	_____.	_____.
0060	611.3230 Inlets 2x3-FT	2.000 EACH	_____.	_____.
0062	619.1000 Mobilization	1.000 EACH	_____.	_____.
0064	624.0100 Water	17.000 MGAL	_____.	_____.
0066	625.0100 Topsoil	5,103.000 SY	_____.	_____.
0068	628.1504 Silt Fence	3,750.000 LF	_____.	_____.



Proposal Schedule of Items

Proposal ID: 20220308010 Project(s): 6996-05-28

Federal ID(s): WISC 2022234

SECTION: 0001 Contract Items

Alt Set ID: Alt Mbr ID:

Proposal Line Number	Item ID Description	Approximate Quantity and Units	Unit Price	Bid Amount
0070	628.1905 Mobilizations Erosion Control	3.000 EACH	_____.	_____.
0072	628.1910 Mobilizations Emergency Erosion Control	1.000 EACH	_____.	_____.
0074	628.2006 Erosion Mat Urban Class I Type A	6,496.000 SY	_____.	_____.
0076	628.7015 Inlet Protection Type C	2.000 EACH	_____.	_____.
0078	630.0140 Seeding Mixture No. 40	119.000 LB	_____.	_____.
0080	630.0500 Seed Water	117.000 MGAL	_____.	_____.
0082	634.0809 Posts Tubular Steel 2x2-Inch X 9.5-FT	3.000 EACH	_____.	_____.
0084	637.2210 Signs Type II Reflective H	5.580 SF	_____.	_____.
0086	642.5201 Field Office Type C	1.000 EACH	_____.	_____.
0088	643.0410 Traffic Control Barricades Type II	42.000 DAY	_____.	_____.
0090	643.0420 Traffic Control Barricades Type III	150.000 DAY	_____.	_____.
0092	643.0705 Traffic Control Warning Lights Type A	84.000 DAY	_____.	_____.
0094	643.0900 Traffic Control Signs	122.000 DAY	_____.	_____.
0096	643.5000 Traffic Control	1.000 EACH	_____.	_____.
0098	650.4000 Construction Staking Storm Sewer	4.000 EACH	_____.	_____.
0100	650.4500 Construction Staking Subgrade	2,922.000 LF	_____.	_____.
0102	650.5000 Construction Staking Base	2,922.000 LF	_____.	_____.



Proposal Schedule of Items

Proposal ID: 20220308010 Project(s): 6996-05-28

Federal ID(s): WISC 2022234

SECTION: 0001 Contract Items

Alt Set ID: Alt Mbr ID:

Proposal Line Number	Item ID Description	Approximate Quantity and Units	Unit Price	Bid Amount
0104	650.8500 Construction Staking Electrical Installations (project) 01. 6996-05-28	LS	LUMP SUM	_____.
0106	650.9000 Construction Staking Curb Ramps	2.000 EACH	_____.	_____.
0108	650.9910 Construction Staking Supplemental Control (project) 01. 6996-05-28	LS	LUMP SUM	_____.
0110	650.9920 Construction Staking Slope Stakes	2,922.000 LF	_____.	_____.
0112	652.0225 Conduit Rigid Nonmetallic Schedule 40 2-Inch	2,918.000 LF	_____.	_____.
0114	652.0325 Conduit Rigid Nonmetallic Schedule 80 2-Inch	33.000 LF	_____.	_____.
0116	653.0164 Pull Boxes Non-Conductive 24x42-Inch	1.000 EACH	_____.	_____.
0118	654.0224 Concrete Control Cabinet Bases Type L24	1.000 EACH	_____.	_____.
0120	655.0610 Electrical Wire Lighting 12 AWG	1,134.000 LF	_____.	_____.
0122	655.0620 Electrical Wire Lighting 8 AWG	3,184.000 LF	_____.	_____.
0124	655.0625 Electrical Wire Lighting 6 AWG	6,368.000 LF	_____.	_____.
0126	656.0200 Electrical Service Meter Breaker Pedestal (location) 01. 142+05.35, RT	LS	LUMP SUM	_____.
0128	659.2124 Lighting Control Cabinets 120/240 24-Inch	1.000 EACH	_____.	_____.
0130	690.0150 Sawing Asphalt	72.000 LF	_____.	_____.
0132	690.0250 Sawing Concrete	30.000 LF	_____.	_____.



Proposal Schedule of Items

Proposal ID: 20220308010 Project(s): 6996-05-28

Federal ID(s): WISC 2022234

SECTION: 0001 Contract Items

Alt Set ID: Alt Mbr ID:

Proposal Line Number	Item ID Description	Approximate Quantity and Units	Unit Price	Bid Amount
0134	ASP.1T0A On-the-Job Training Apprentice at \$5.00/HR	1,200.000 HRS	5.00000	6,000.00
0136	ASP.1T0G On-the-Job Training Graduate at \$5.00/HR	600.000 HRS	5.00000	3,000.00
0138	SPV.0060 Special 01. Decorative Bench	4.000 EACH	_____.	_____.
0140	SPV.0060 Special 02. Canal Railing Concrete Bases	139.000 EACH	_____.	_____.
0142	SPV.0060 Special 03. Concrete Base Type Special	22.000 EACH	_____.	_____.
0144	SPV.0060 Special 04. Install Lighting Unit Type Special 1	21.000 EACH	_____.	_____.
0146	SPV.0060 Special 05. Install Lighting Unit Type Special 2	1.000 EACH	_____.	_____.
0148	SPV.0060 Special 06. Salvaged Rail Post	1.000 EACH	_____.	_____.
0150	SPV.0090 Special 01. Canal Railing	680.000 LF	_____.	_____.
0152	SPV.0165 Special 01. Wall Modular Block Gravity Landscape (127+31.LT)	87.000 SF	_____.	_____.
0154	SPV.0165 Special 02. Wall Modular Block Gravity Landscape (131+75, LT)	87.000 SF	_____.	_____.
0156	SPV.0165 Special 03. Wall Modular Block Gravity Landscape (146+50, LT)	87.000 SF	_____.	_____.
0158	SPV.0165 Special 04. Wall Modular Block Gravity Landscape (155+04, LT)	87.000 SF	_____.	_____.
0160	SPV.0165 Special 05. Wall Modular Block Mechanically Stabilized Earth (142+15, LT)	863.000 SF	_____.	_____.



Proposal Schedule of Items

Proposal ID: 20220308010 Project(s): 6996-05-28

Federal ID(s): WISC 2022234

SECTION: 0001 Contract Items

Alt Set ID: Alt Mbr ID:

Proposal Line Number	Item ID Description	Approximate Quantity and Units	Unit Price	Bid Amount
0162	SPV.0165 Special 06. Wall Modular Block Mechanically Stabilized Earth (142+15, RT)	911.000 SF	_____.	_____.
		Section: 0001	Total:	_____.
			Total Bid:	_____.