



Wisconsin Department of Transportation

Division of Transportation Systems Development

Bureau of Project Development
4822 Madison Yards Way, 4th Floor South
Madison, WI 53705

February 28, 2022

Telephone: (608) 266-1631
Facsimile (FAX): (608) 266-8459

NOTICE TO ALL CONTRACTORS:

Proposal #26: 6560-08-71, WISC 20202250
Kaukauna - Seymour
CTH JJ Intersection
STH 55
Outagamie County

6570-09-71, WISC 2022251
Kaukauna - Seymour
IH 41 – STH 54
STH 55
Outagamie County

Letting of March 8, 2022

This is Addendum No. 01, which provides for the following:

Schedule of Items:

Revised Bid Item Quantities (Project ID 6570-09-71)					
Bid Item	Item Description	Unit	Old Quantity	Revised Quantity	Proposal Total
460.2010	Incentive Air Voids HMA Pavement	DOL	56,910	-1,820	55,090
460.6224	HMA Pavement 4 MT 58-28 S	TON	56,910	-1,820	55,090
465.0110	Asphaltic Surface Patching	TON	300	2,280	2,580

Plan Sheets:

Revised Plan Sheets (Project ID 6570-09-71)	
Plan Sheet	Plan Sheet Title (brief description of changes to sheet)
14	Changed material from HMA Pavement 4 MT 58-28 S to Asphaltic Surface Patching on Detail for Curb and Gutter Remove/Replace
16	Changed material from HMA Pavement 4 MT 58-28 S to Asphaltic Surface Patching on New Culvert Pipes with Transition Detail. Updated notes.
18	Changed material from HMA Pavement 4 MT 58-28 S to Asphaltic Surface Patching on Adjusting Inlet Detail. Updated notes.
19	Changed material from HMA Pavement 4 MT 58-28 S to Asphaltic Surface Patching on Storm Sewer Replacement Detail. Updated notes.
30	Changed material from HMA Pavement 4 MT 58-28 S to Asphaltic Surface Patching on Curb Ramp Details. Updated notes.
31	Changed material from HMA Pavement 4 MT 58-28 S to Asphaltic Surface Patching on Curb Ramp Details. Updated notes.
32	Changed material from HMA Pavement 4 MT 58-28 S to Asphaltic Surface Patching on Curb Ramp Details. Updated notes.
33	Changed material from HMA Pavement 4 MT 58-28 S to Asphaltic Surface Patching on Curb Ramp Details. Updated notes.

34	Changed material from HMA Pavement 4 MT 58-28 S to Asphaltic Surface Patching on Curb Ramp Details. Updated notes.
35	Changed material from HMA Pavement 4 MT 58-28 S to Asphaltic Surface Patching on Curb Ramp Details. Updated notes.
82	Miscellaneous Quantities: Revised quantities.
83	Miscellaneous Quantities: Revised quantities.

Schedule of Items

Attached, dated February 28, 2022, are the revised Schedule of Items Page 3.

Plan Sheets

The following 8½ x 11-inch sheets are attached and made part of the plans for this proposal:
Revised: Project ID 6570-09-71 sheets 14, 16, 18, 19, 30, 31, 32, 33, 34, 35, 82 and 83.

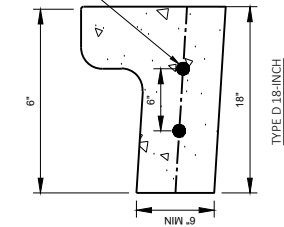
The responsibility for notifying potential subcontractors and suppliers of these changes remains with the prime contractor.

Sincerely,

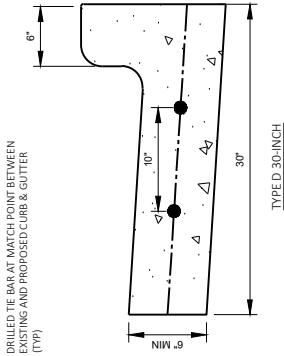
Mike Coleman

Proposal Development Specialist
Proposal Management Section

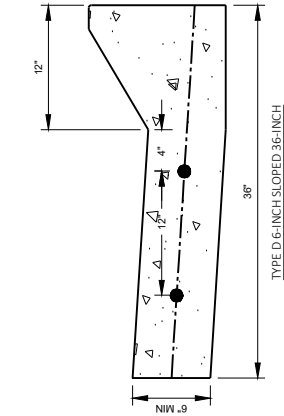
END OF ADDENDUM



TYPE D 18-INCH

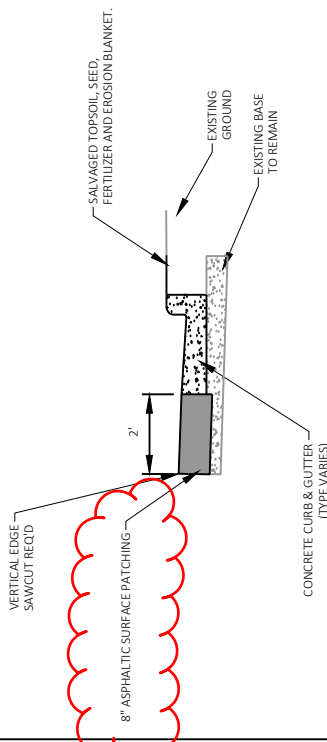


TYPE D 30-INCH



TYPE D 6-INCH SLOPED 36-INCH

DRILLED TIE BAR DETAIL AT CURB & GUTTER MATCH POINT

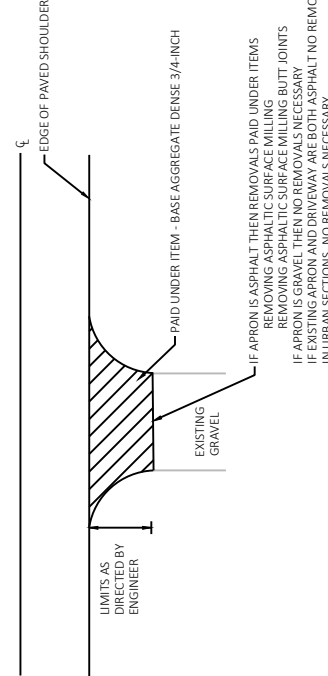


NOTES:

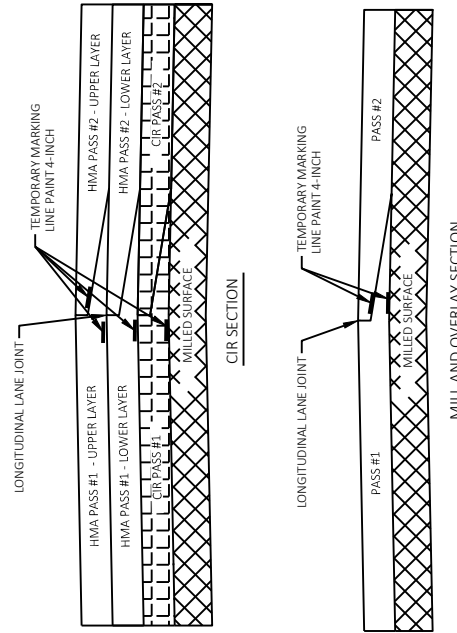
1. SAWCUT LIMITS ALONG WIDTH OF CURB & GUTTER AT REMOVE/REPLACE LIMITS.
2. RESTORE AREA WITH 6" TOPSOIL, SEED, FERTILIZER AND EROSION MAT URBAN CLASS I TYPE B
3. ASPHALT REMOVAL IN FRONT OF PAID AS REMOVING ASPHALTIC SURFACE.
4. SEE PLAN SHEETS AND MISCELLANEOUS QUANTITIES FOR APPROXIMATE LOCATIONS AND CURB TYPES.

DETAIL FOR CURB AND GUTTER REMOVAL/REPLACEMENT

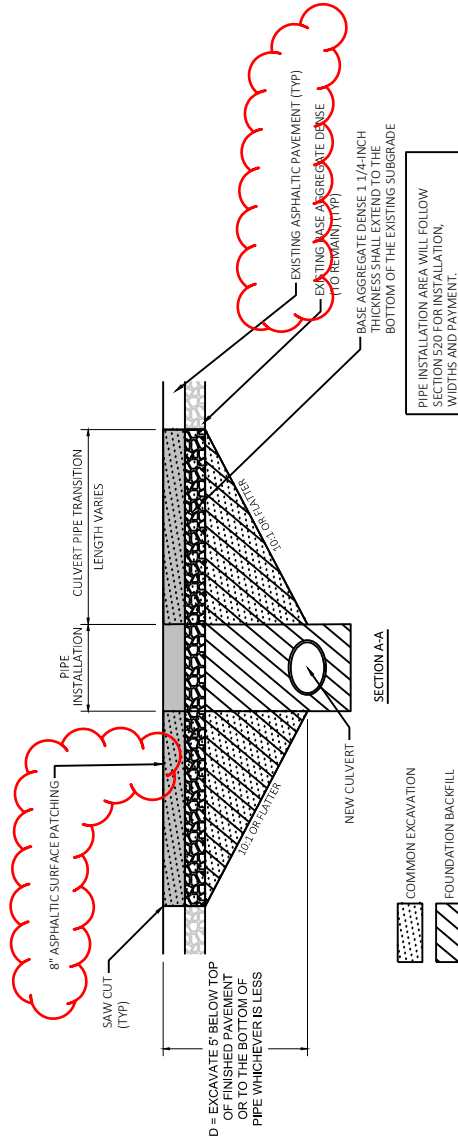
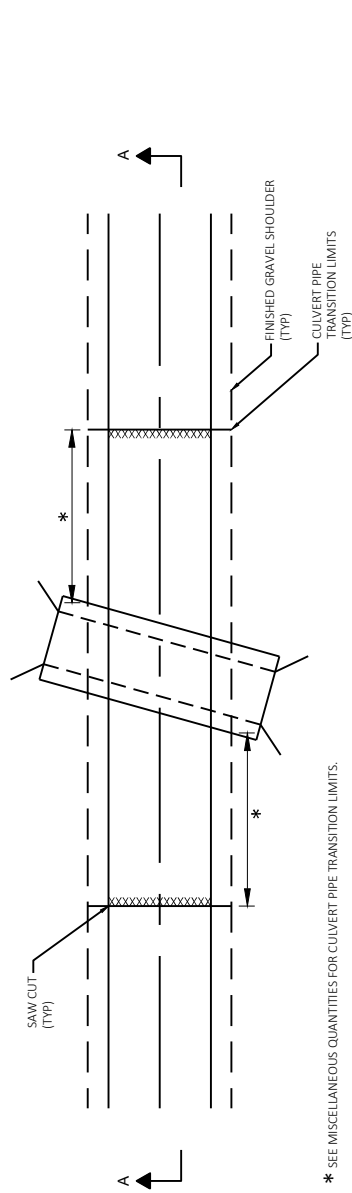
Addendum No. 01
 ID 6570-09-71
 Revised Sheet
 February 28, 2022



RURAL DRIVEWAY DETAIL - OVERLAY SECTION (NO GRADE CHANGE)



PAVEMENT MARKING DETAIL FOR TAPERED OVERLAPPING JOINTS IN HMA PAVEMENTS



PIPE INSTALLATION AREA WILL FOLLOW SECTION 520 FOR INSTALLATION, WIDTHS AND PAYMENT.

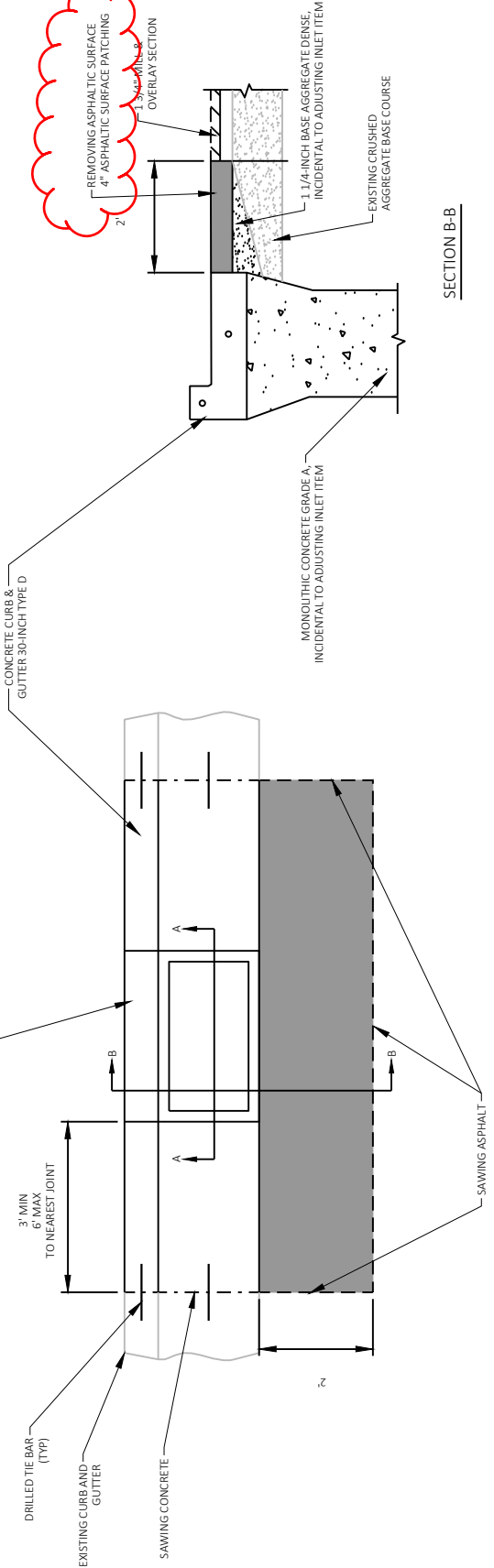
CULVERT PIPE TRANSITION AREAS WILL BE PAID BY COMMON EXCAVATION & FOUNDATION BACKFILL.

PAVEMENT SAW CUT TO BE PERPENDICULAR TO ROAD ALIGNMENT.

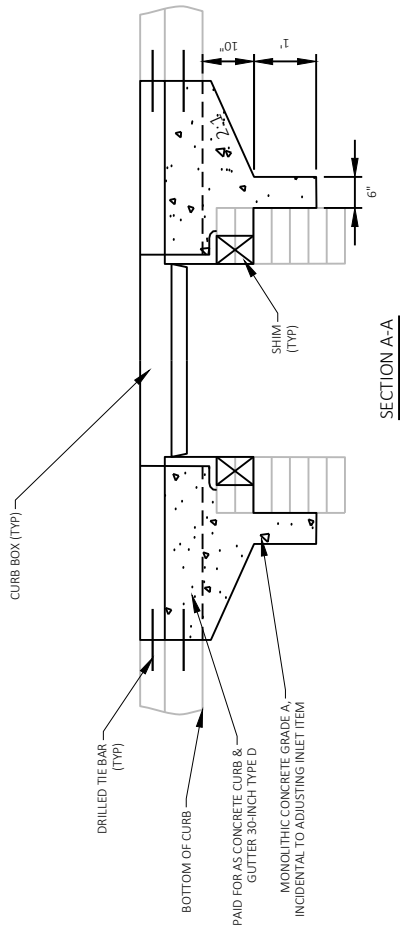
CONTINUE GIR TREATMENT THROUGH ASPHALTIC PATCH.

NEW CULVERT PIPES WITH TRANSITION
 APPLIES TO ALL PROPOSED CROSS CULVERT PIPES

Addendum No. 01
 ID 6570-09-71
 Revised Sheet 16
 February 28, 2022



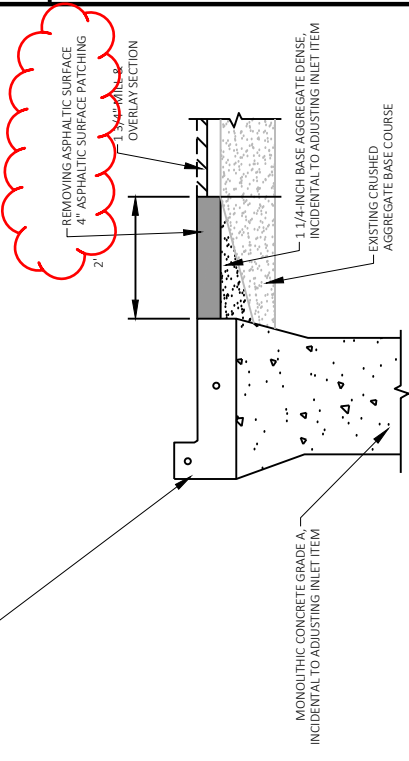
Addendum No. 01
 ID 6570-09-71
 Revised Sheet 18
 February 28, 2022



SECTION A-A

ADJUSTING INLET DETAIL

SECTION B-B

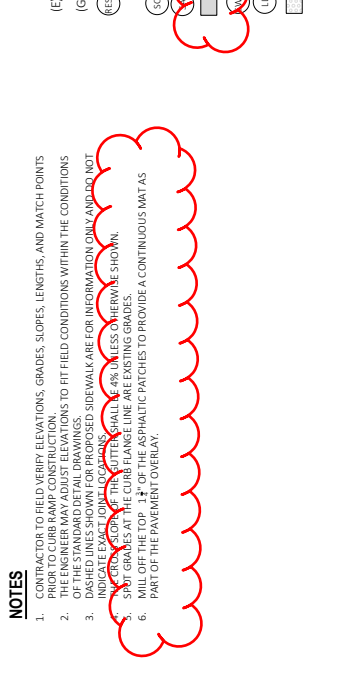


NOTES:
 THE CURB BOX OPENING SHALL BE SEALED PRIOR TO POURING THE CONCRETE CURB TO PREVENT CONCRETE FROM ENTERING THE STRUCTURE.
 1. REUSE EXISTING GRATE AND CASTING.
 2. REMOVALS SHALL BE PAID FOR UNDER THE "REMOVING ASPHALTIC SURFACE" AND "REMOVING CURB & GUTTER BOX" ITEMS.
 3. SAWCUT OF EXISTING CURB & GUTTER WILL BE PAID FOR AS "SAWING CONCRETE".
 4. IN OVERLAY SECTIONS, MILL OFF THE TOP 1/4" OF THE ASPHALTIC PATCHES TO PROVIDE A CONTINUOUS MAT AS PART OF THE PAVEMENT OVERLAY.

CTH E NW				
POINT NUMBER	STATION	OFFSET	ELEVATION	X
266	378+88.11	27.67'L	753.19	608870.63
267	378+96.31	30.17'L	753.24	608868.88
268	378+99.72	32.40'L	753.69	608862.33
269	378+81.89	36.94'L	754.06	608854.50
270	378+78.77	39.44'L	754.21	608851.53
271	378+76.21	36.51'L	753.56	608848.91
272	378+90.27	27.48'L	753.30	608849.52
273	379+06.05	24.20'L	753.44	608879.10
274	378+77.53	38.02'L	753.43	608850.25
275	378+77.83	38.37'L	753.88	608850.57
276	379+32.09	25.93'L	753.24	608904.56
277	379+32.05	26.41'L	753.63	608904.54
278				

CTH E NW				
POINT NUMBER	STATION	OFFSET	ELEVATION	X
250	378+82.73	43.97'L	754.32	608855.57
251	378+84.89	41.55'L	754.12	608857.69
252	378+84.62	41.13'L	754.12	608857.41
253	378+91.47	37.59'L	753.93	608864.18
254	378+91.31	37.12'L	753.77	608864.01
255	378+98.90	35.30'L	753.78	608871.57
256	378+98.77	34.81'L	753.30	608871.43
257	379+03.22	34.30'L	753.81	608875.87
258	379+03.38	33.80'L	753.36	608876.02
259	379+09.03	34.33'L	753.47	608881.68
260	379+09.04	33.83'L	753.46	608881.68
261	379+32.06	34.37'L	753.87	608904.70
262	379+32.07	29.31'L	753.71	608904.62
263	379+09.51	29.46'L	753.40	608882.06
264	379+03.41	28.87'L	753.19	608875.95
265	379+04.93	26.76'L	753.15	608877.43
266				
267				
268				
269				
270				
271				
272				
273				
274				
275				
276				
277				
278				

CTH E SE				
POINT NUMBER	STATION	OFFSET	ELEVATION	X
200	378+52.36	59.19'R	754.08	606823.14
201	378+31.60	44.14'R	753.71	606802.68
202	378+29.79	42.83'R	753.70	606800.90
203	378+29.04	35.63'R	753.63	606800.30
204	378+34.01	35.11'R	753.56	606805.28
205	378+38.30	34.67'R	753.51	606809.57
206	378+44.84	39.01'R	753.52	606816.03
207	378+46.92	40.81'R	753.71	606818.07
208	378+34.53	40.09'R	753.64	606805.70
209	378+54.05	54.24'R	753.92	606824.93
210	378+50.29	40.61'R	753.63	606821.45
211	378+42.49	34.23'R	753.65	606813.77
212	378+30.70	28.93'R	753.66	606802.09
213	378+30.15	30.85'R	753.66	606801.51
214	378+30.02	31.39'R	753.99	606801.36
215	378+48.86	42.00'R	753.52	606819.98
216	378+48.50	42.35'R	753.84	606819.62
217				



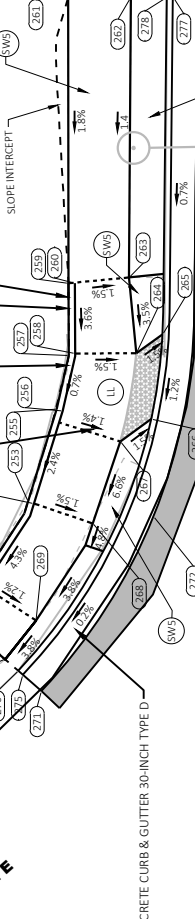
RADIAL WARNING FIELD PANEL LAYOUT TABLE				
QUADRANT	BACK OF CURB RADIUS (FT)	LANDING LENGTH 'XR'	RADIAL WARNING FIELD AREA (SF)	RADIAL LONG CHORD (FT)
SOUTHWEST	41.5	10.37	166 SF	8.69'

CTH E NW				
POINT NUMBER	STATION	OFFSET	ELEVATION	X
250	378+82.73	43.97'L	754.32	608855.57
251	378+84.89	41.55'L	754.12	608857.69
252	378+84.62	41.13'L	754.12	608857.41
253	378+91.47	37.59'L	753.93	608864.18
254	378+91.31	37.12'L	753.77	608864.01
255	378+98.90	35.30'L	753.78	608871.57
256	378+98.77	34.81'L	753.30	608871.43
257	379+03.22	34.30'L	753.81	608875.87
258	379+03.38	33.80'L	753.36	608876.02
259	379+09.03	34.33'L	753.47	608881.68
260	379+09.04	33.83'L	753.46	608881.68
261	379+32.06	34.37'L	753.87	608904.70
262	379+32.07	29.31'L	753.71	608904.62
263	379+09.51	29.46'L	753.40	608882.06
264	379+03.41	28.87'L	753.19	608875.95
265	379+04.93	26.76'L	753.15	608877.43
266				
267				
268				
269				
270				
271				
272				
273				
274				
275				
276				
277				
278				

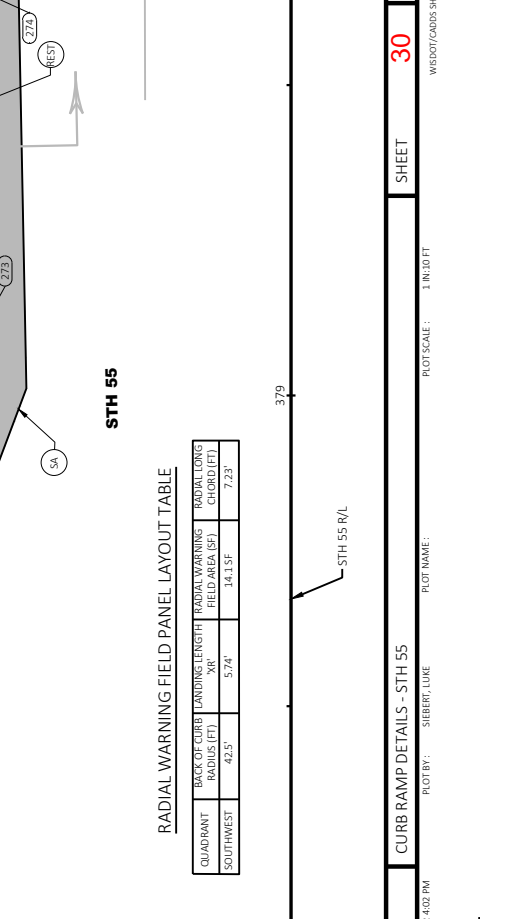
CTH E SE				
POINT NUMBER	STATION	OFFSET	ELEVATION	X
200	378+52.36	59.19'R	754.08	606823.14
201	378+31.60	44.14'R	753.71	606802.68
202	378+29.79	42.83'R	753.70	606800.90
203	378+29.04	35.63'R	753.63	606800.30
204	378+34.01	35.11'R	753.56	606805.28
205	378+38.30	34.67'R	753.51	606809.57
206	378+44.84	39.01'R	753.52	606816.03
207	378+46.92	40.81'R	753.71	606818.07
208	378+34.53	40.09'R	753.64	606805.70
209	378+54.05	54.24'R	753.92	606824.93
210	378+50.29	40.61'R	753.63	606821.45
211	378+42.49	34.23'R	753.65	606813.77
212	378+30.70	28.93'R	753.66	606802.09
213	378+30.15	30.85'R	753.66	606801.51
214	378+30.02	31.39'R	753.99	606801.36
215	378+48.86	42.00'R	753.52	606819.98
216	378+48.50	42.35'R	753.84	606819.62
217				

CTH E NW				
POINT NUMBER	STATION	OFFSET	ELEVATION	X
266	378+88.11	27.67'L	753.19	608870.63
267	378+96.31	30.17'L	753.24	608868.88
268	378+99.72	32.40'L	753.69	608862.33
269	378+81.89	36.94'L	754.06	608854.50
270	378+78.77	39.44'L	754.21	608851.53
271	378+76.21	36.51'L	753.56	608848.91
272	378+90.27	27.48'L	753.30	608849.52
273	379+06.05	24.20'L	753.44	608879.10
274	378+77.53	38.02'L	753.43	608850.25
275	378+77.83	38.37'L	753.88	608850.57
276	379+32.09	25.93'L	753.24	608904.56
277	379+32.05	26.41'L	753.63	608904.54
278				

CTH E SE				
POINT NUMBER	STATION	OFFSET	ELEVATION	X
200	378+52.36	59.19'R	754.08	606823.14
201	378+31.60	44.14'R	753.71	606802.68
202	378+29.79	42.83'R	753.70	606800.90
203	378+29.04	35.63'R	753.63	606800.30
204	378+34.01	35.11'R	753.56	606805.28
205	378+38.30	34.67'R	753.51	606809.57
206	378+44.84	39.01'R	753.52	606816.03
207	378+46.92	40.81'R	753.71	606818.07
208	378+34.53	40.09'R	753.64	606805.70
209	378+54.05	54.24'R	753.92	606824.93
210	378+50.29	40.61'R	753.63	606821.45
211	378+42.49	34.23'R	753.65	606813.77
212	378+30.70	28.93'R	753.66	606802.09
213	378+30.15	30.85'R	753.66	606801.51
214	378+30.02	31.39'R	753.99	606801.36
215	378+48.86	42.00'R	753.52	606819.98
216	378+48.50	42.35'R	753.84	606819.62
217				



RADIAL WARNING FIELD PANEL LAYOUT TABLE				
QUADRANT	BACK OF CURB RADIUS (FT)	LANDING LENGTH 'XR'	RADIAL WARNING FIELD AREA (SF)	RADIAL LONG CHORD (FT)
SOUTHWEST	41.5	10.37	166 SF	8.69'



RADIAL WARNING FIELD PANEL LAYOUT TABLE				
QUADRANT	BACK OF CURB RADIUS (FT)	LANDING LENGTH 'XR'	RADIAL WARNING FIELD AREA (SF)	RADIAL LONG CHORD (FT)
SOUTHWEST	41.5	10.37	166 SF	8.69'

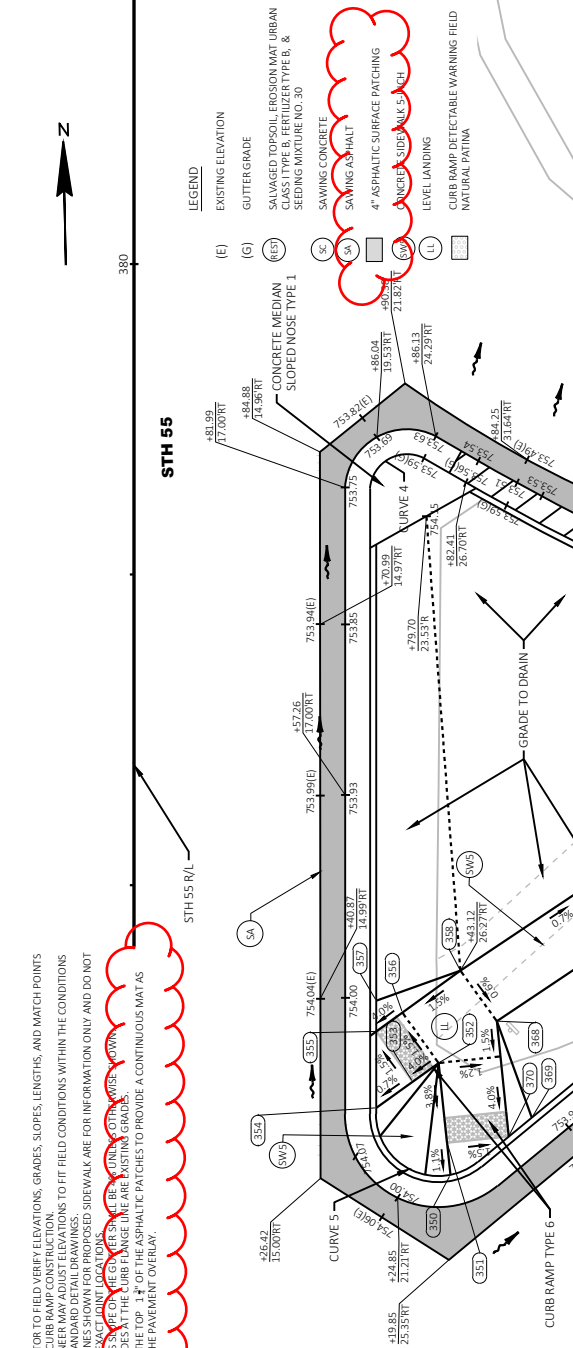
NOTES

1. CONTRACTOR TO FIELD VERIFY ELEVATIONS, GRADES, SLOPES, LENGTHS, AND MATCH POINTS PRIOR TO CURB RAMP CONSTRUCTION.
2. PLOTTED ELEVATIONS TO FIT FIELD CONDITIONS WITHIN THE CONDITIONS OF THE STANDARD DETAIL DRAWINGS.
3. DASHED LINES SHOWN FOR PROPOSED SIDEWALK ARE FOR INFORMATION ONLY AND DO NOT INDICATE EXACT POINT LOCATIONS.
4. CURB RAMP TYPE 6 IS TO BE CONSTRUCTED WITHIN THE MATCHING GROUND SPOT MARKS WITHIN THE CURB RAMP AND MATCHING GROUND.
5. MILL OFF THE TOP 1" OF THE ASPHALTIC PATCHES TO PROVIDE A CONTINUOUS MATAS PART OF THE PAVEMENT OVERLAY.

STH 55 R/L

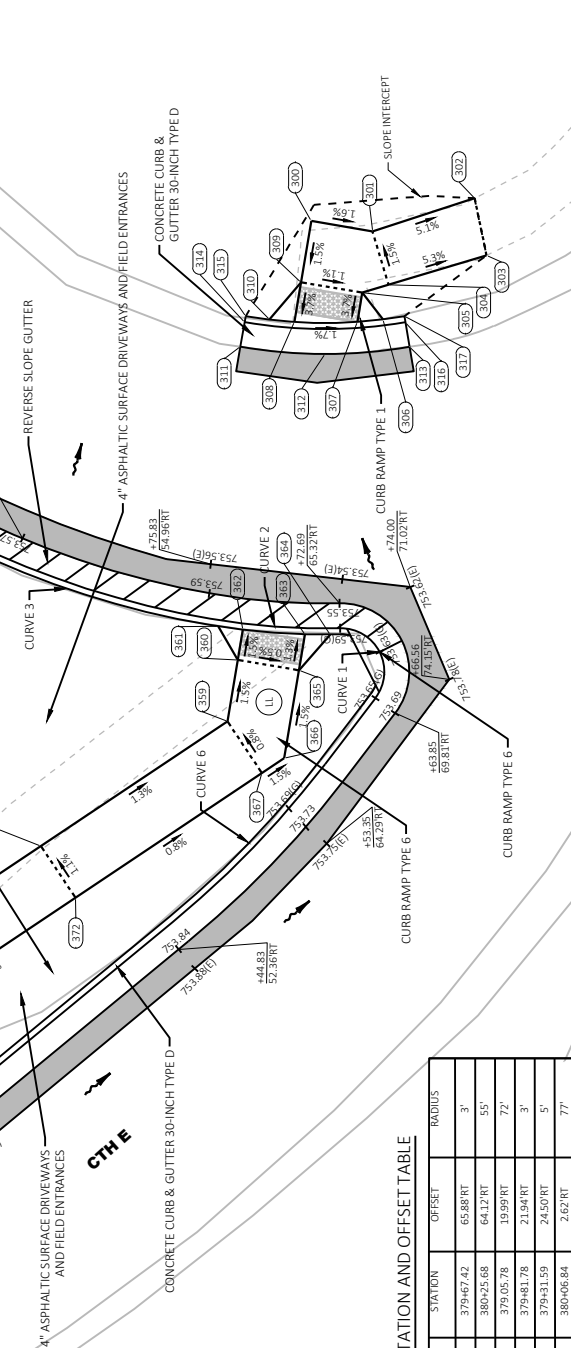
CTHE NE ISL

POINT NUMBER	STATION	OFFSET	ELEVATION	Y	X
350	379+26.68	25.46 R	753.83	606888.13	857538.21
351	379+29.26	25.19 R	753.86	606900.71	857537.99
352	379+35.69	24.52 R	754.11	606907.15	857537.45
353	379+44.19	22.42 R	754.00	606905.69	857535.32
354	379+52.08	19.50 R	753.98	606903.04	857532.36
355	379+58.24	19.50 R	753.93	606909.80	857522.48
356	379+59.75	21.59 R	754.03	606911.27	857534.61
357	379+60.71	19.50 R	754.02	606912.27	857522.53
358	379+63.12	26.27 R	754.12	606914.54	857529.35
359	379+63.19	56.29 R	753.78	606934.01	857539.77
360	379+68.12	57.12 R	753.70	606938.92	857560.69
361	379+70.84	55.55 R	754.17	606941.07	857559.18
362	379+70.57	57.53 R	753.67	606941.36	857556.15
363	379+70.20	62.54 R	753.64	606940.89	857566.15
364	379+70.18	64.56 R	754.12	606940.83	857568.17
365	379+67.30	62.05 R	753.68	606938.00	857565.61
366	379+62.24	60.86 R	753.78	606930.96	857564.28
367	379+59.04	59.07 R	753.82	606929.80	857562.46
368	379+59.06	29.19 R	754.09	606910.42	857532.19
369	379+51.30	32.01 R	754.33	606902.61	857534.85
370	379+49.78	30.16 R	753.79	606901.12	857532.97
371	379+53.16	41.28 R	754.02	606942.28	857544.56
372	379+49.00	44.06 R	753.97	606920.07	857547.25



CTHE NE

POINT NUMBER	STATION	OFFSET	ELEVATION	Y	X
300	380+05.46	63.04 R	753.30	606974.13	857567.32
301	380+02.63	67.97 R	753.38	606973.21	857572.24
302	380+05.29	76.20 R	753.82	606975.70	857596.51
303	380+00.70	77.15 R	753.75	606971.09	857581.38
304	379+98.34	69.26 R	753.32	606968.89	857573.44
305	379+97.70	67.15 R	753.28	606968.30	857571.31
306	379+95.54	68.81 R	753.63	606966.10	857573.93
307	379+95.34	66.75 R	753.19	606965.94	857570.87
308	379+95.34	61.68 R	753.11	606966.04	857565.80
309	379+98.53	62.21 R	753.23	606969.22	857566.40
310	379+95.53	59.68 R	753.55	606966.27	857565.81
311	379+93.35	57.34 R	753.24	606964.14	857561.42
312	379+92.76	64.15 R	753.27	606963.41	857568.22
313	379+93.33	70.96 R	753.30	606963.85	857575.04
314	379+95.32	57.68 R	753.26	606966.10	857561.80
315	379+95.81	57.77 R	753.57	606966.59	857561.90
316	379+95.30	70.62 R	753.21	606965.83	857574.74
317	379+95.80	70.54 R	753.56	606966.32	857574.66



Addendum No. 01
 ID 6570-09-71
 Revised Sheet 31
 February 28, 2022

Addendum No. 01
ID 6570-09-71
Revised Sheet 32
February 28, 2022

NOTES

1. CONTRACTOR TO FIELD VERIFY ELEVATIONS, GRADES, SLOPES, LENGTHS, AND MATCH POINTS PRIOR TO CURB RAMP CONSTRUCTION.
2. THE ENGINEER MAY ADJUST ELEVATIONS TO FIT FIELD CONDITIONS WITHIN THE CONDITIONS OF THE STANDARD DETAIL DRAWINGS.
3. DASHED LINES SHOWN FOR PROPOSED SIDEWALK ARE FOR INFORMATION ONLY AND DO NOT CONSTITUTE A COMMITMENT TO CONSTRUCTION.
4. THE CROSS SLOPE OF THE CURB SHALL BE 4% UNLESS OTHERWISE SHOWN.
5. SPOT GRADES AT THE CURB FLANGE LINE ARE EXISTING GRADES.
6. MILLOFF THE TOP 1" OF THE ASPHALTIC PATCHES TO PROVIDE A CONTINUOUS MAT AS PART OF THE PAVEMENT OVERLAY.

CTHS SW

POINT NUMBER	STATION	OFFSET	ELEVATION	Y	X
001	387+40.89	31.43'	L	747.64	607713.31
002	387+60.48	37.06'	L	747.47	607733.01
003	387+64.28	41.01'	L	747.39	607736.88
004	387+73.68	50.80'	L	747.33	607746.48
005	387+75.07	52.24'	L	747.32	607747.90
006	387+82.07	52.53'	L	747.25	607754.91
007	387+88.22	54.78'	L	747.42	607761.10
008	387+87.47	52.75'	L	747.06	607760.31
009	387+85.04	47.65'	L	747.12	607757.78
010	387+83.83	45.60'	L	747.62	607756.53
011	387+82.28	47.54'	L	747.29	607755.01
012	387+77.28	47.33'	L	747.36	607750.01
013	387+67.88	37.55'	L	747.46	607740.42
014	387+67.88	32.55'	L	747.39	607740.32
015	387+69.88	31.46'	L	747.68	607742.30
016	387+60.88	26.38'	L	747.50	607733.21
017	387+62.88	32.55'	L	747.46	607735.32
018	387+61.86	32.25'	L	747.55	607734.29
019	387+41.97	26.54'	L	747.79	607714.29
020	387+59.71	23.94'	L	747.52	607731.97
021	387+79.52	36.14'	L	747.36	607752.03
022	387+91.26	56.03'	L	747.17	607764.16
023	387+59.10	25.85'	L	747.39	607731.41
024	387+58.95	26.32'	L	747.75	607731.27
025	387+89.34	56.60'	L	747.01	607762.26
026	387+88.86	56.74'	L	747.51	607761.78



CONCRETE CURB & GUTTER 30-INCH TYPE D

CURB RAMP TYPE 3 MODIFIED

SLOPE INTERCEPT

STH 55

387

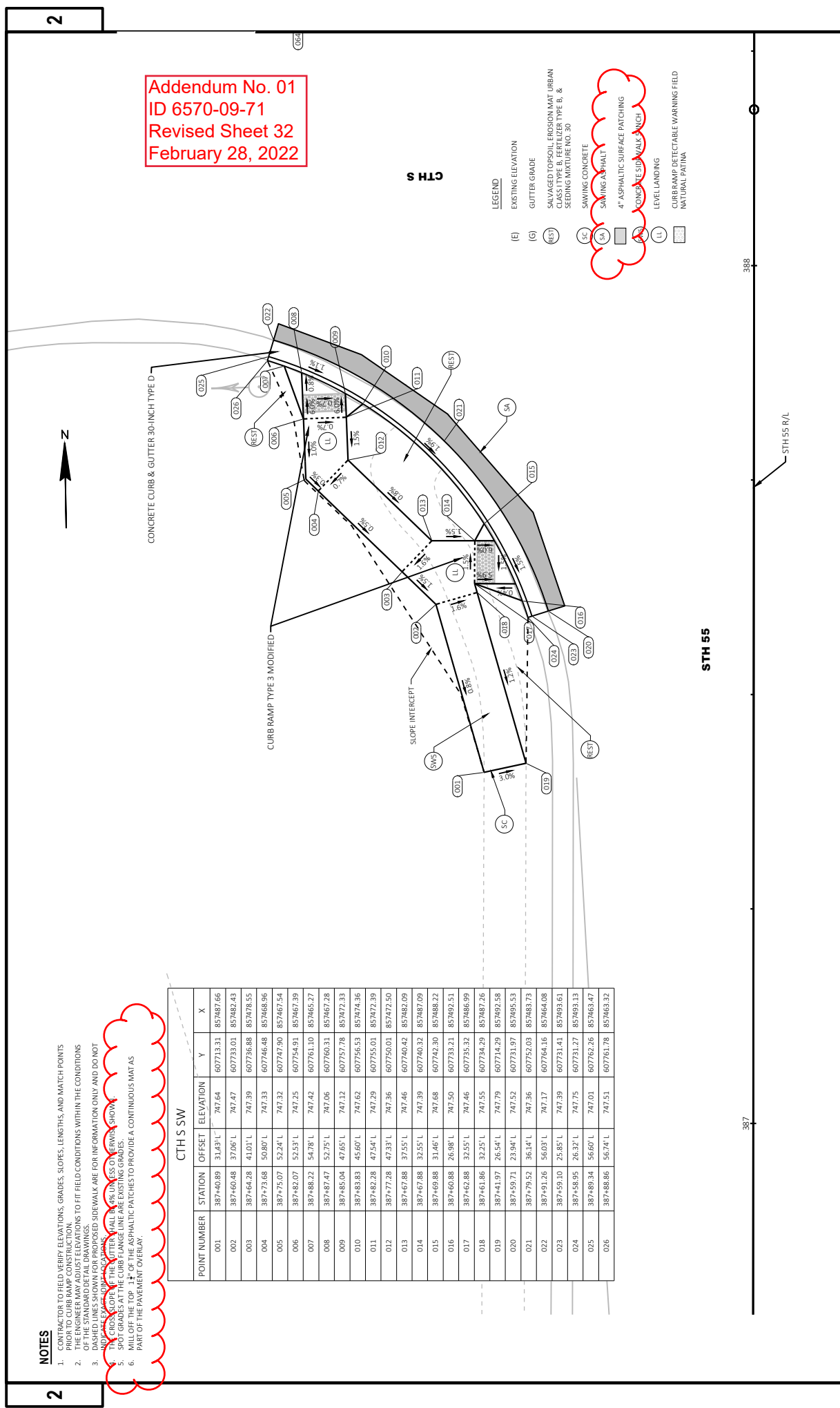
388

STH 55 R/L

CTHS

LEGEND

- (E) EXISTING ELEVATION
- (G) GUTTER GRADE
- (REST) SALVAGED TOPSOIL, EROSION MAT (URBAN CLASS TYPE B, FERTILIZER TYPE B, & SEEDING MIXTURE NO. 30)
- (SC) SAWING CONCRETE
- (SA) SAWING ASPHALT
- (PA) 4" ASPHALTIC SURFACE PATCHING
- (PW) CONCRETE SIDEWALK 30-INCH
- (LL) LEVEL LANDING
- (L) CURB RAMP DETECTABLE WARNING FIELD
- (N) NATURAL PATINA



NOTES

- CONTRACTOR TO FIELD VERIFY ELEVATIONS, GRADES, SLOPES, LENGTHS, AND MATCH POINTS WITH THE STANDARD DETAIL DRAWINGS.
- THE ENGINEER MAY ADJUST ELEVATIONS TO FIT FIELD CONDITIONS WITHIN THE CONDITIONS OF THE STANDARD DETAIL DRAWINGS.
- DASHED LINES SHOWN FOR PROPOSED SIDEWALK ARE FOR INFORMATION ONLY AND DO NOT INDICATE EXACT POINT LOCATIONS.
- EXISTING GRADES AT THE CURB FLANK LINE ARE EXISTING GRADES.
- WILLOFF THE TOP 1 1/2" OF THE ASPHALTIC PATCHES TO PROVIDE A CONTINUOUS MAT AS PART OF THE PAVEMENT OVERLAY.

STH 55



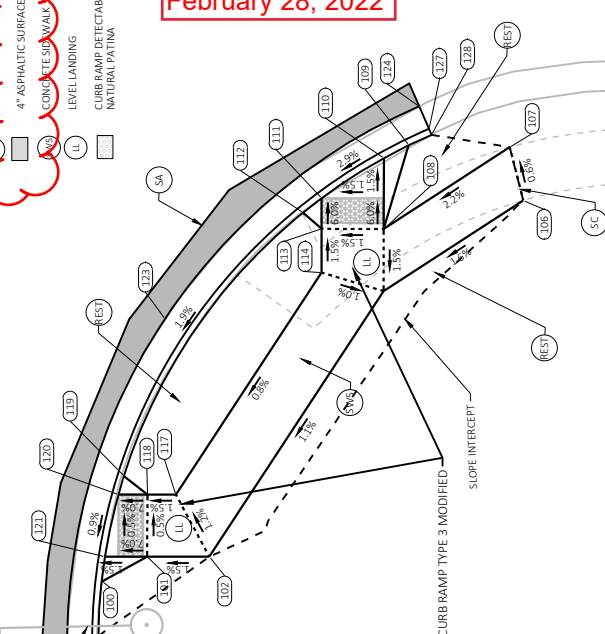
STH 55 R/L

LEGEND

- (E) EXISTING ELEVATION
- (G) GUTTER GRADE
- (REST) SALVAGED TOPSOIL, EROSION MAT URBAN CLASS TYPE B, FERTILIZER TYPE B, & SEEDING MIXTURE NO. 30
- (SC) SAWING CONCRETE
- (SA) SAWING ASPHALT
- (AS) 4" ASPHALTIC SURFACE PATCHING
- (WC) CONCRETE SIDEWALK 4-INCH
- (L) LEVEL LANDING
- (C) CURB RAMP DETECTABLE WARNING FIELD
- (N) NATURAL PATINA

Addendum No. 01
ID 6570-09-71
Revised Sheet 33
February 28, 2022

CONCRETE CURB & GUTTER 30-INCH TYPE D



CTH S SE

POINT NUMBER	STATION	OFFSET	ELEVATION	Y	X
100	387+60.89 STH 55	25.18' R	747.71	607732.17	857544.66
101	387+62.88 STH 55	28.83' R	747.39	607734.09	857548.35
102	387+62.88 STH 55	33.83' R	747.46	607733.99	857553.35
106	387+91.59 STH 55	59.07' R	747.39	607762.19	857579.16
107	387+95.88 STH 55	57.98' R	747.37	607766.49	857578.16
108	387+89.28 STH 55	47.84' R	747.11	607760.10	857567.88
109	387+96.02 STH 55	49.85' R	747.24	607766.80	857570.03
110	387+94.98 STH 55	47.85' R	746.91	607765.80	857568.01
111	387+91.76 STH 55	42.84' R	747.03	607762.68	857562.94
112	387+90.59 STH 55	41.34' R	747.32	607763.54	857561.41
113	387+89.29 STH 55	42.84' R	747.18	607760.21	857562.88
114	387+85.77 STH 55	42.83' R	747.23	607756.70	857562.81
117	387+67.88 STH 55	31.13' R	747.40	607759.04	857560.75
118	387+67.88 STH 55	28.83' R	747.36	607759.09	857546.45
119	387+69.38 STH 55	26.94' R	747.67	607740.63	857546.59
120	387+67.88 STH 55	26.50' R	747.20	607739.14	857546.12
121	387+62.88 STH 55	25.42' R	747.21	607734.16	857544.95
122	387+56.53 STH 55	22.40' R	747.37	607727.87	857541.79
123	387+82.03 STH 55	30.23' R	747.13	607753.21	857550.14
124	387+99.16 STH 55	50.68' R	747.01	607769.92	857570.93
125	387+56.51 STH 55	24.40' R	747.24	607727.81	857543.79
126	387+56.50 STH 55	24.90' R	747.31	607727.79	857544.29
127	387+97.33 STH 55	51.48' R	746.89	607768.07	857571.69
128	387+96.87 STH 55	51.68' R	747.34	607767.61	857571.88

PROJECT NO: 6570-09-71

HWY: STH 55

COUNTY: OUTAGAMIE

CURB RAMP DETAILS - STH 55

SHEET

33

E

FILE NAME: K:\1192\202\CIVIL\6570\09\03\SHEETS\PLAN\021\301-CR.DWG

LAYOUT NAME: -021007.sx

PLOT DATE: 2/23/2022 4:08 PM

PLOT BY: SIEBER, LUKE

PLOT SCALE: 1 IN.=30 FT

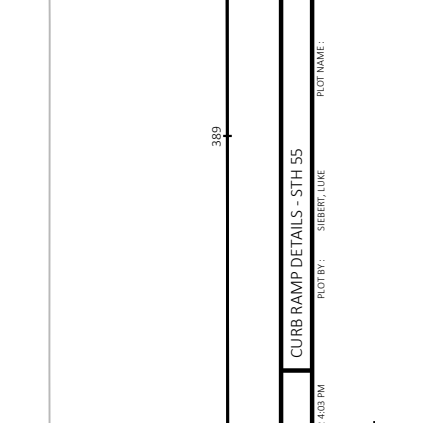
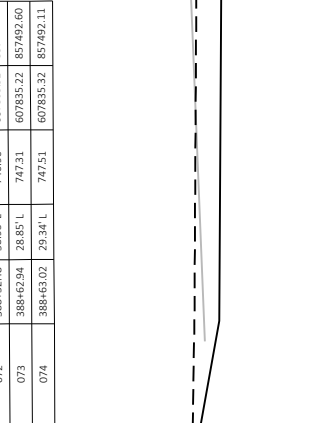
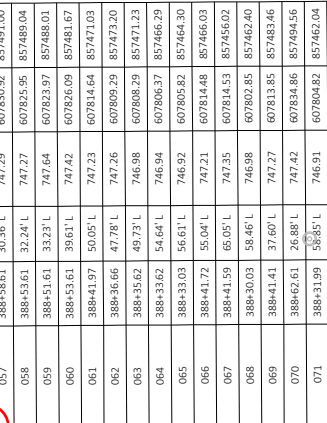
WISDOT/CADDIS SHEET 42

- NOTES**
1. CONTRACTOR TO FIELD VERIFY ELEVATIONS, GRADES, SLOPES, LENGTHS, AND MATCH POINTS PRIOR TO CURB RAMP CONSTRUCTION.
 2. THE CURB RAMP CONSTRUCTION SHALL BE TO THE MAXIMUM PERMITTED SLOPE TO FIT FIELD CONDITIONS WITHIN THE CONDITIONS OF THIS STANDARD DETAIL. MAXIMUM SLOPE SHALL BE 5%.
 3. DASHED LINES SHOWN FOR PROPOSED SIDEWALK ARE FOR INFORMATION ONLY AND DO NOT INDICATE EXACT JOINT LOCATIONS.
 4. PROPOSED SIDEWALK JOINTS SHALL BE UNLESS OTHERWISE SHOWN.
 5. ALL UTILITY LINES ARE EXISTING GRADES.
 6. SHALL SET THE TOP OF THE ASPHALTIC PATCHES TO PROVIDE A CONTINUOUS MAT AS PART OF THE PAVEMENT OVERLAY.

CTHS NW

POINT NUMBER	STATION	OFFSET	ELEVATION	Y	X
050	388+46.47	65.29 L	747.49	607819.41	857455.86
051	388+46.71	55.29 L	747.28	607819.47	857465.87
052	388+46.96	50.30 L	747.31	607819.63	857470.87
053	388+43.61	44.61 L	747.50	607826.18	857476.67
054	388+58.61	44.61 L	747.53	607831.18	857476.76
055	388+58.61	39.61 L	747.45	607831.09	857481.76
056	388+60.61	29.83 L	747.49	607832.91	857491.57
057	388+58.61	30.36 L	747.29	607830.92	857493.00
058	388+53.61	32.24 L	747.27	607825.25	857489.04
059	388+51.61	33.23 L	747.64	607823.97	857488.01
060	388+53.61	39.61 L	747.42	607826.09	857481.67
061	388+41.97	50.05 L	747.23	607814.64	857471.03
062	388+36.66	47.78 L	747.26	607809.29	857473.20
063	388+35.62	49.73 L	746.98	607808.29	857471.23
064	388+33.62	54.64 L	746.94	607806.37	857466.29
065	388+33.03	56.61 L	746.92	607805.82	857464.30
066	388+41.72	55.04 L	747.21	607814.48	857466.03
067	388+41.59	65.05 L	747.35	607814.53	857465.02
068	388+30.03	58.46 L	746.98	607802.85	857462.40
069	388+41.41	37.60 L	747.27	607813.85	857483.46
070	388+62.61	26.88 L	747.42	607834.86	857494.56
071	388+31.99	53.65 L	746.91	607804.82	857462.04
072	388+32.48	58.95 L	746.90	607805.31	857461.95
073	388+62.94	28.85 L	747.31	607835.22	857492.60
074	388+63.02	29.34 L	747.51	607835.32	857492.11

- LEGEND**
- (E) EXISTING ELEVATION
 - (G) GUTTER GRADE
 - (RES) SAWN CONCRETE
 - (SC) SAWN CONCRETE
 - (SW) SAWN CONCRETE
 - (LL) LEVEL LANDING
 - (SI) CURB RAMP DETECTABLE WARNING FIELD
 - (NAT) NATURAL PATINA
 - (S) SLOPE INTERCEPT



Addendum No. 01
ID 6570-09-71
Revised Sheet 34
February 28, 2022

NOTES

1. CONTRACTOR TO FIELD VERIFY ELEVATIONS, GRADES, SLOPES, LENGTHS, AND MATCH POINTS PRIOR TO CURB RAMP CONSTRUCTION.
2. THE ENGINEER MAY ADJUST ELEVATIONS TO FIT FIELD CONDITIONS WITHIN THE CONDITIONS OF CONTRACT.
3. DASHED LINES SHOWN FOR PROPOSED SIDEWALK ARE FOR INFORMATION ONLY AND DO NOT INDICATE EXACT JOINT LOCATIONS.
4. ALL CURB TOPS, THE GUTTER, AND ALL SIDEWALKS ON RAMP SHALL BE FINISHED TO THE SAME GRADE AS THE CURB LANDING ARE EXISTING GRADES.
5. SPOT GRADES AT THE CURB LANDING ARE EXISTING GRADES.
6. ALL CURB RAMP AND SIDEWALK ASPHALTIC PATCHES TO PROVIDE A CONTINUOUS MAT AS PART OF THE PAVEMENT OVERLAY.

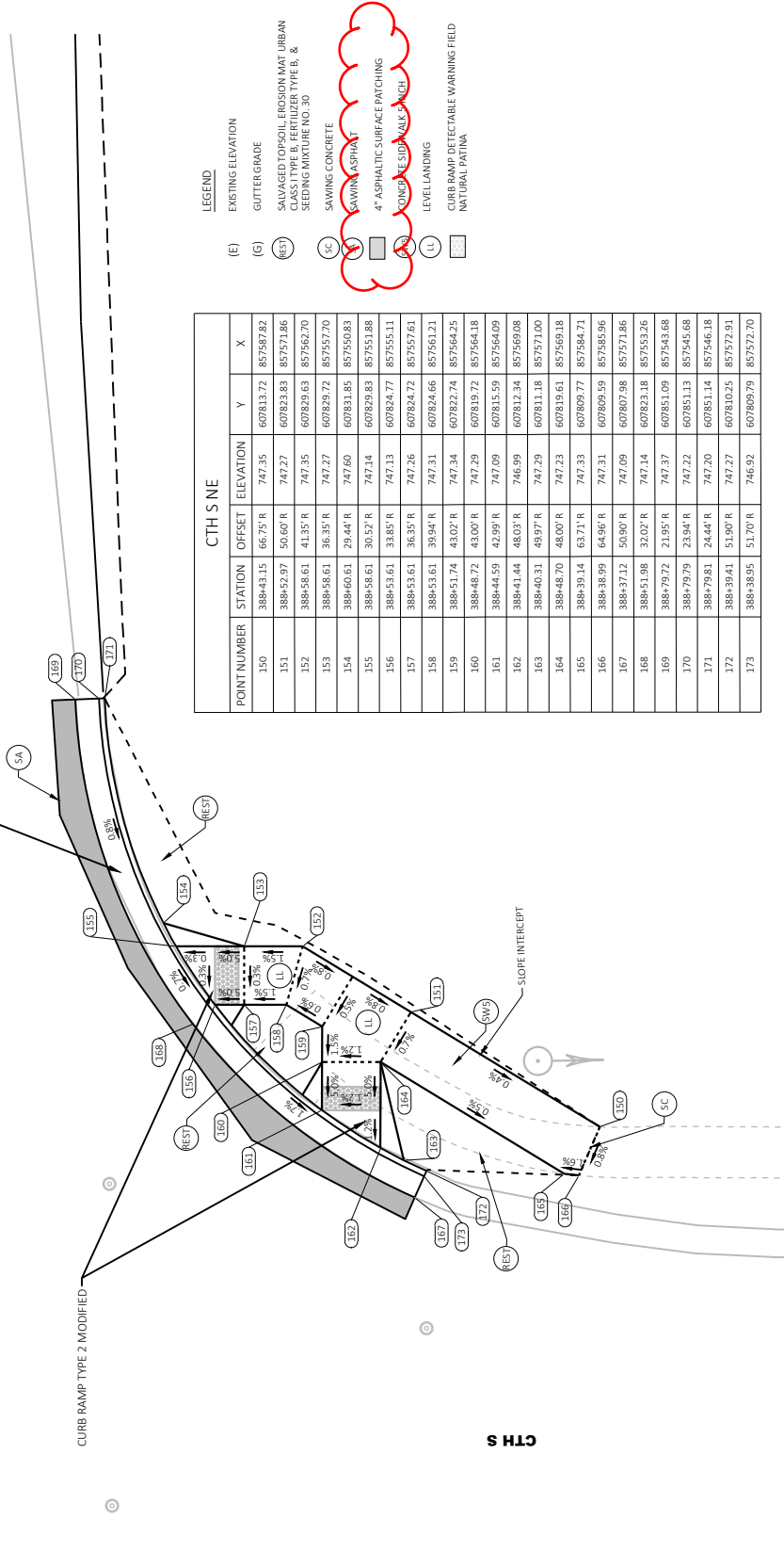
STH 55

STH 55 R/L

CONCRETE CURB & GUTTER 30-INCHTYPE D

CURB RAMP TYPE 2 MODIFIED

CTH S NE



POINT NUMBER	STATION	CTH S NE			
		OFFSET	ELEVATION	X	
150	388+43.15	66.75' R	747.35	607813.72	857587.82
151	388+52.97	50.60' R	747.27	607823.83	857571.86
152	388+58.61	41.35' R	747.35	607828.63	857562.70
153	388+58.61	36.35' R	747.27	607829.72	857557.70
154	388+60.61	29.44' R	747.60	607831.85	857550.83
155	388+58.61	30.52' R	747.14	607829.83	857551.88
156	388+53.61	33.85' R	747.13	607824.77	857555.11
157	388+53.61	36.35' R	747.26	607824.72	857557.61
158	388+53.61	39.94' R	747.31	607824.66	857561.21
159	388+51.74	43.02' R	747.34	607822.74	857564.25
160	388+48.72	43.00' R	747.29	607819.72	857564.18
161	388+44.59	42.99' R	747.09	607815.59	857564.09
162	388+41.44	48.03' R	746.99	607812.34	857569.08
163	388+40.31	49.97' R	747.29	607811.18	857571.00
164	388+48.70	48.00' R	747.23	607819.61	857569.18
165	388+39.14	63.71' R	747.33	607809.77	857584.71
166	388+38.99	64.96' R	747.31	607809.59	857585.96
167	388+37.12	50.90' R	747.09	607807.98	857571.86
168	388+51.98	32.02' R	747.14	607823.18	857553.26
169	388+79.72	21.95' R	747.37	607851.09	857548.68
170	388+79.79	23.94' R	747.22	607851.13	857545.68
171	388+79.81	24.44' R	747.20	607851.14	857546.18
172	388+39.41	51.90' R	747.27	607810.25	857572.91
173	388+38.95	51.70' R	746.92	607808.79	857572.70

LEGEND

- (E) EXISTING ELEVATION
- (G) GUTTER GRADE
- (E35) SALVAGED TOPSOIL EROSION MAT URBAN CASE TYPE B; FERTILIZER TYPE B, & SEEDING MIXTURE NO. 30
- (SC) SAWING CONCRETE
- (SA) SAWING ASPHALT
- (AS) 4" ASPHALTIC SURFACE PATCHING
- (AS) 4" ASPHALTIC SURFACE PATCHING
- (L) LEVEL LANDING
- (L) CURB RAMP DETECTABLE WARNING FIELD
- (N) NATURAL PATINA

Addendum No. 01
 ID 6570-09-71
 Revised Sheet 35
 February 28, 2022

Addendum No. 01
ID 6570-09-71
Revised Sheet 83
February 28, 2022

ROADWAY	PWL DENSITY INCENTIVE TON*	PWL AIR VOIDS TON**	LF OF CENTERLINE LF**
STH 55	61+22.68 - 90+50	810	1900
	90+50 - 116+69.08	1450	2040
	142+42.77 - 151+50	500	720
	151+50 - 182+00	1680	2700
	182+00 - 212+50	1680	2720
	212+50 - 243+00	1680	2720
	243+00 - 273+50	1680	2530
	273+50 - 304+00	1680	2630
	304+00 - 334+50	1680	2520
	334+50 - 364+22	1637	2440
	364+21.82 - 389+57	699	1430
	389+57 - 426+00	2007	2670
	426+00 - 456+50	1680	2350
	456+50 - 487+00	1680	2140
	487+00 - 517+50	1680	2310
	517+50 - 548+00	1680	2250
	548+00 - 578+50	1680	2200
	578+50 - 609+00	1680	2370
	609+00 - 639+50	1680	2180
	639+50 - 670+00	1680	2220
	670+00 - 700+50	1680	2110
	700+50 - 731+00	1680	2150
	731+00 - 761+50	1680	2330
	761+50 - 791+22	1637	2120
	791+22 - 805+27	250	420
	791+22.03B' - 802+59.61B'	630	870
	TOTAL 0010	38,180	55,090
			71,568

* TONNAGE IS ELIGIBLE FOR INCENTIVE DENSITY PWL 460,2005 AND INCENTIVE AIR VOIDS 460,2010.
 ** TONNAGE IS ELIGIBLE FOR INCENTIVE AIR VOIDS 460,2010.
 *** LF IS ELIGIBLE FOR INCENTIVE DENSITY HMA PAVEMENT LONGITUDINAL JOINTS ITEM 460,2007.

ALL ITEMS CATEGORY 0010

SHEET: 83

MISCELLANEOUS QUANTITIES

COUNTY: OUTAGAMIE

HWY: STH 55

PROJECT: 6570-09-71

FILE NAME: \\K:\112720\CW\65700900\Design\Quantities\09_Resurf\032021-qty.pptx

PLOT DATE: 2/28/2022 3:28 PM

PLOT BY: _____

PLOT NAME: _____

PLOT SCALE: 1:1



Proposal Schedule of Items

Proposal ID: 20220308026 Project(s): 6560-08-71, 6570-09-71

Federal ID(s): WISC 2022250, WISC 2022251

SECTION: 0001 Contract Items

Alt Set ID: Alt Mbr ID:

Proposal Line Number	Item ID Description	Approximate Quantity and Units	Unit Price	Bid Amount
0062	416.0160 Concrete Driveway 6-Inch	75.000 SY	_____.	_____.
0064	416.0512 Concrete Truck Apron 12-Inch	348.000 SY	_____.	_____.
0066	416.0610 Drilled Tie Bars	50.000 EACH	_____.	_____.
0068	455.0605 Tack Coat	34,776.000 GAL	_____.	_____.
0070	455.0770.S Asphalt Stabilizing Agent	1,264.000 TON	_____.	_____.
0072	460.0105.S HMA Percent Within Limits (PWL) Test Strip Volumetrics	1.000 EACH	_____.	_____.
0074	460.0110.S HMA Percent Within Limits (PWL) Test Strip Density	2.000 EACH	_____.	_____.
0076	460.2000 Incentive Density HMA Pavement	6,060.000 DOL	1.00000	6,060.00
0078	460.2005 Incentive Density PWL HMA Pavement	38,180.000 DOL	1.00000	38,180.00
0080	460.2007 Incentive Density HMA Pavement Longitudinal Joints	35,790.000 DOL	1.00000	35,790.00
0082	460.2010 Incentive Air Voids HMA Pavement	55,090.000 DOL	1.00000	55,090.00
0084	460.6224 HMA Pavement 4 MT 58-28 S	55,090.000 TON	_____.	_____.
0086	460.7223 HMA Pavement 3 HT 58-28 S	7,490.000 TON	_____.	_____.
0088	460.7424 HMA Pavement 4 HT 58-28 H	2,080.000 TON	_____.	_____.
0090	465.0110 Asphaltic Surface Patching	2,580.000 TON	_____.	_____.
0092	465.0120 Asphaltic Surface Driveways and Field Entrances	594.000 TON	_____.	_____.

