



Wisconsin Department of Transportation

January 27, 2023

**Division of Transportation Systems
Development**

Bureau of Project Development
4822 Madison Yards Way, 4th Floor South
Madison, WI 53705

Telephone: (608) 266-1631
Facsimile (FAX): (608) 266-8459

NOTICE TO ALL CONTRACTORS:

**Proposal #02: 1204-08-65, WISC 2023004
Mount Horeb – Madison
Town Hall Road to CTH PD
USH 18
Dane County**

Letting of February 14, 2023

This is Addendum No. 01, which provides for the following:

Plan Sheets:

Revised Plan Sheets	
Plan Sheet	Plan Sheet Title (brief description of changes to sheet)
443	Added notes to the SDD

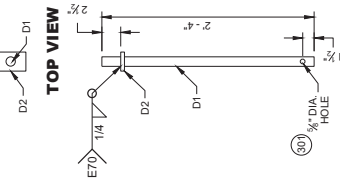
The responsibility for notifying potential subcontractors and suppliers of these changes remains with the prime contractor.

Sincerely,

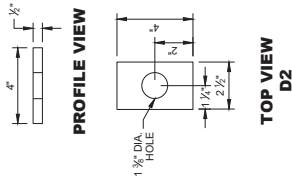
Mike Coleman

Proposal Development Specialist
Proposal Management Section

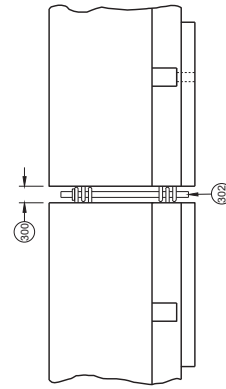
END OF ADDENDUM



**PROFILE VIEW
CONNECTOR PIN
ASSEMBLY**

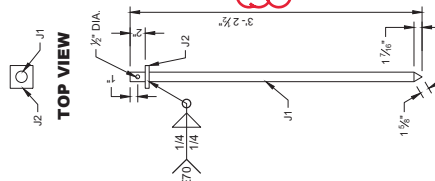


**TOP VIEW
D2**

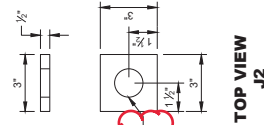


**CONNECTING TEMPORARY
BARRIER SECTIONS**

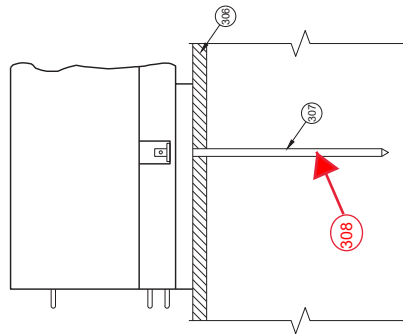
- GENERAL NOTES**
- 309 SET WITH 3/8" WOOD BLOCK.
 - 307 HOLE IS OPTIONAL.
 - 302 CONNECTOR PIN ASSEMBLY.
 - 303 CONCRETE PAVEMENT, APPROACH SLAB, OR DECK.
 - 304 CONCRETE DECK.
 - 305 DO NOT USE ON CONCRETE BRIDGE DECK WITH ASPHALT OVERLAY OR CONCRETE PAVEMENT WITH ASPHALT OVERLAY.
 - 306 MINIMUM OF 2" OF ASPHALT.
 - 307 ASPHALT ANCHOR PIN ASSEMBLY
 - 308 IF DRILLING A PILOT HOLE, THE MAX DIA. OF THE PILOT HOLE IS 3/4".



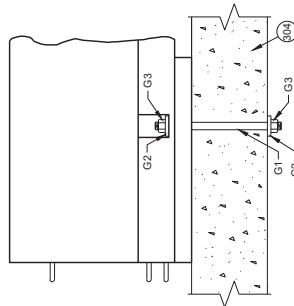
**PROFILE VIEW
ASPHALT ANCHOR PIN
ASSEMBLY**



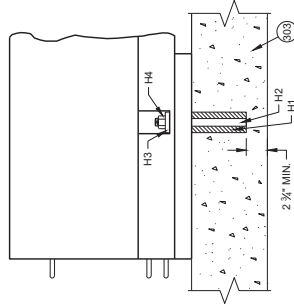
**TOP VIEW
J2**



**SIDE VIEW
ASPHALT ANCHOR
INSTALLATION**



**SIDE VIEW
THROUGH BOLT ANCHOR
INSTALLATION**



**SIDE VIEW
ADHESIVE ANCHOR
INSTALLATION**

Addendum No. 01
ID 1204-08-65
Revised Sheet 443
January 27, 2023

**CONCRETE BARRIER
TEMPORARY PRECAST,
12' - 6"**

STATE OF WISCONSIN
DEPARTMENT OF TRANSPORTATION