



# Wisconsin Department of Transportation

February 7, 2023

## Division of Transportation Systems Development

Bureau of Project Development  
4822 Madison Yards Way, 4<sup>th</sup> Floor South  
Madison, WI 53705

Telephone: (608) 266-1631  
Facsimile (FAX): (608) 266-8459

### NOTICE TO ALL CONTRACTORS:

**Proposal #09: 5420-02-72, WISC 2023221  
Madison – Lodi  
Knutson Drive to STH 19  
STH 113  
Dane County**

### Letting of February 14, 2023

This is Addendum No. 03, which provides for the following:

#### Special Provisions:

Revised Special Provisions	
Article No.	Description
8	Work by Others

#### Plan Sheets:

Revised Plan Sheets	
Plan Sheet	Plan Sheet Title (brief description of changes to sheet)
96	Include the removal of Existing Concrete Control Cabinet Base Type 9 – Special (Now includes utility layers)
99	Include location of New Concrete Control Cabinet Base Type 9 – Special (Now includes utility layers)
182	Misc Quantities – Updated Quantities to include Concrete Control Cabinet Base Type 9 - Special (Revised sheets to include note about additional quantities listed elsewhere and renaming incorrect bid items in tables)
183	Misc Quantities – Updated Quantities to include removal of Concrete Control Cabinet Base Type 9 (Revised sheets to include note about additional quantities listed elsewhere and renaming incorrect bid items in tables)
184	Misc Quantities – Updated the descriptions to follow the plan sheets. (Revised sheets to include note about additional quantities listed elsewhere and renaming incorrect bid items in tables)

<b>Added Plan Sheets</b>	
<b>Plan Sheet</b>	<b>Plan Sheet Title (brief description of why sheet was added)</b>
259A	Included plan sheet for SDD 09C06 for Concrete Control Cabinet Base, Type 9 Special

The responsibility for notifying potential subcontractors and suppliers of these changes remains with the prime contractor.

Sincerely,

*Mike Coleman*

Proposal Development Specialist  
Proposal Management Section

**ADDENDUM NO. 03**

**5420-02-72**

**February 7, 2023**

**Special Provisions**

**8. Work by Others.**

The solar powered flashing beacon assembly installed on the intersection warning signs along STH 113 at the Arboretum Drive/Bong Road intersection (approximately Station 402+00'RNB' and 418+00'RSB') will be removed by the department. Contact Jeff Holloway at (608) 246-3268, two weeks prior to sign removal to coordinate the removal of the solar powered flashing beacon assembly.

The traffic signal cabinet at the River Road intersection (approximately Station 82+40'SB', LT) will be removed, reinstalled, and wired by the department. Contact Ben Artin 3 days prior to work on signal cabinet base at (608) 516-7295.

**Plan Sheets**

The following 8½ x 11-inch sheets are attached and made part of the plans for this proposal:

Revised: 96, 99, 182, 183, and 184.

Added: 259A

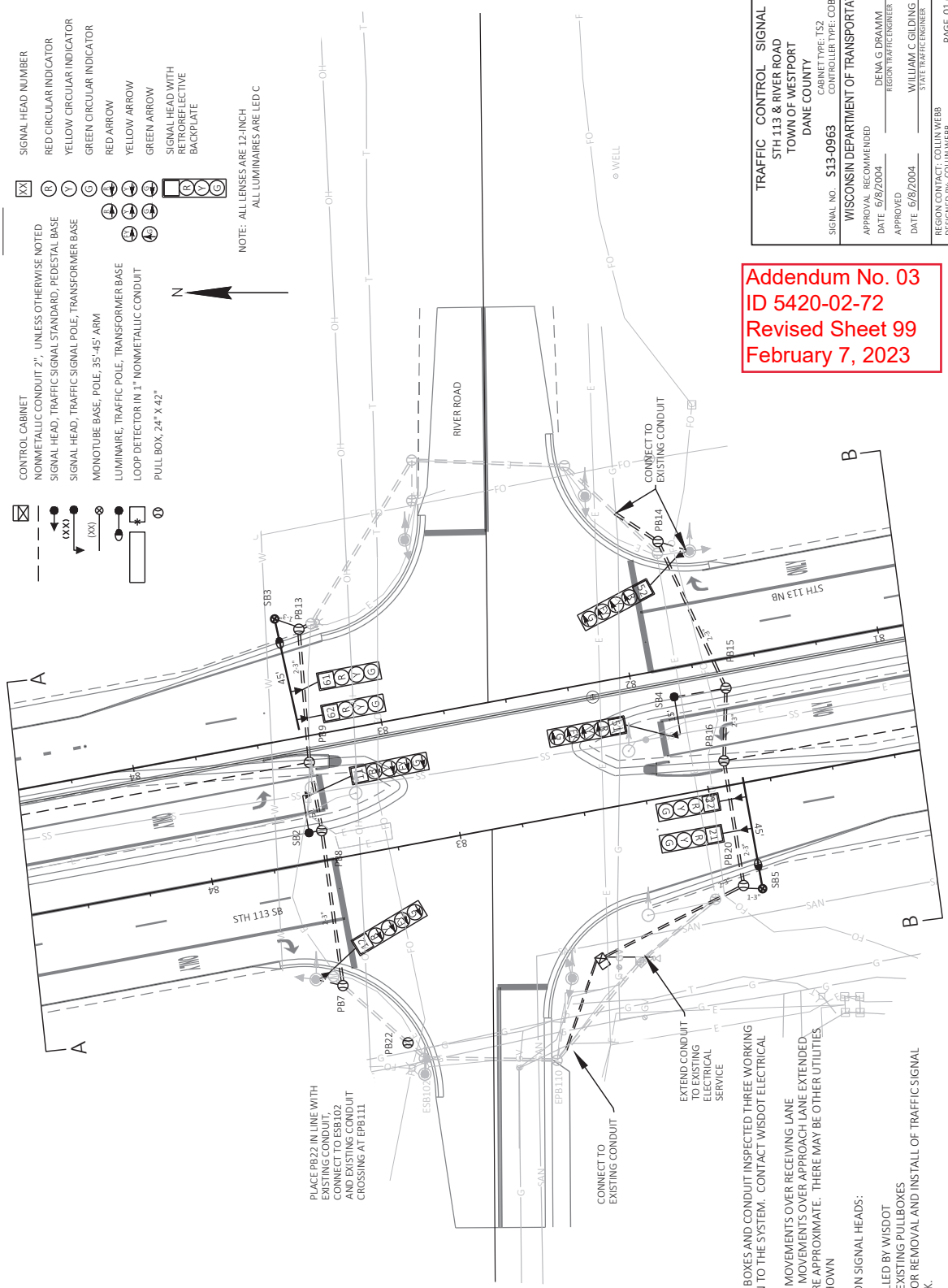
END OF ADDENDUM



LEGEND

- CONTROL CABINET
  - NONMETALLIC CONDUIT 2" UNLESS OTHERWISE NOTED
  - SIGNAL HEAD, TRAFFIC SIGNAL STANDARD, PEDESTAL BASE
  - SIGNAL HEAD, TRAFFIC SIGNAL POLE, TRANSFORMER BASE
  - MONOTUBE BASE, POLE, 35'-45' ARM
  - LUMINAIRE, TRAFFIC POLE, TRANSFORMER BASE
  - LOOP DETECTOR IN 1" NONMETALLIC CONDUIT
  - PULL BOX, 24" X 42"
- SIGNAL HEAD NUMBER
  - RED CIRCULAR INDICATOR
  - YELLOW CIRCULAR INDICATOR
  - GREEN CIRCULAR INDICATOR
  - RED ARROW
  - YELLOW ARROW
  - GREEN ARROW
  - SIGNAL HEAD WITH RETROREFLECTIVE BACKPLATE

NOTE: ALL LENSES ARE 12-INCH ALL LUMINAIRES ARE LED C



**Addendum No. 03**  
**ID 5420-02-72**  
**Revised Sheet 99**  
**February 7, 2023**

- GENERAL NOTES:
- 1) THE CONTRACTOR SHALL HAVE THE PULL BOXES AND CONDUIT INSPECTED THREE WORKING DAYS PRIOR TO PLACING SIGNAL CABLE IN TO THE SYSTEM. CONTACT WISDOT ELECTRICAL FIELD UNIT TO MAKE ARRANGEMENTS
  - 2) CENTER HEADS CONTROLLING THROUGH MOVEMENTS OVER RECEIVING LANE
  - 3) CENTER HEADS CONTROLLING LEFT TURN MOVEMENTS OVER APPROACH LANE EXTENDED. THE LOCATIONS OF EXISTING UTILITIES ARE APPROXIMATE. THERE MAY BE OTHER UTILITIES WITHIN THE PROJECT WHICH ARE NOT SHOWN
  - 4) ALL LUMINAIRES ARE LED C
  - 5) INSTALL RETROREFLECTIVE BACKPLATES ON SIGNAL HEADS: 11, 12, 21, 22, 51, 52, 61, 62
  - 6) NON-INTRUSIVE DETECTION TO BE INSTALLED BY WISDOT
  - 7) CAP ALL ABANDONED CONDUIT ENDS IN EXISTING PULLBOXES
  - 8) COORDINATE WITH STATE ELECTRICIAN FOR REMOVAL AND INSTALL OF TRAFFIC SIGNAL CABINET AT LEAST 3 DAYS PRIOR TO WORK.

TRAFFIC CONTROL SIGNAL	
STH 113 & RIVER ROAD	
TOWN OF WESTPORT	
DANE COUNTY	
SIGNAL NO. 513-0963	CABINET TYPE: TS2
WISCONSIN DEPARTMENT OF TRANSPORTATION	
APPROVAL RECOMMENDED	
DATE 6/8/2004	DENA G DRAMM
APPROVED	REGIONAL TRAFFIC ENGINEER
DATE 6/8/2004	WILLIAM C GLIDDING
STATE TRAFFIC ENGINEER	
REGION CONTACT: COLIN WEBB	PAGE 01 OF 02
DESIGNED BY: COLIN WEBB	REVISED BY:



**Poles, Arms & Equipment**

Category	Station	Dir	Location	657.0352 Poles Type 10 Spectral	657.0815 Luminaire Arms Steel 15-FT EACH	657.0820 Luminaire Arms Steel 10 Pole Clamp 15-FT EACH	657.0100 Pedestal Bases EACH	657.0255 Transformer Bases Breakaway 11 1/2 Inch 13" EACH	657.0420 Traffic Signal Standard Aluminum 13" EACH	657.0905 Poles Type 2 EACH	657.0315 Poles Type 4 EACH	657.0885 Trombone Arms 15-FT EACH	657.0709 Luminaire Arms Truss Member 4-Inch 12-FT EACH	658.0173 Traffic Signal Face 35 12-Inch EACH	658.0174 Traffic Signal Face 45 12-Inch EACH	SPV. 0060.01 Retroreflective Backplate 35 EACH	SPV. 0060.02 Retroreflective Backplate 45 EACH	658.0500 Pedestrian Button EACH	658.0416 Pedestrian Signal Face 16-Inch EACH	659.1125 Luminaires Utility LED C EACH	DESC	
0010	63 + 6	RIGHT	37																			
0010	83 + 36	LEFT	38																			SB1
0010	83 + 34	RIGHT	38																			SB2
0010	81 + 84	LEFT	11																			SB3
0010	81 + 62	LEFT	91																			SB4
0010	83 + 42	LEFT	96																			SB5
0010	81 + 68	RIGHT	44																			Existing SB103
0010	62 + 94	LEFT	39																			Existing SB108
<b>Total</b>				<b>2</b>	<b>2</b>	<b>2</b>	<b>1</b>	<b>3</b>	<b>1</b>	<b>2</b>	<b>1</b>	<b>2</b>	<b>1</b>	<b>1</b>	<b>4</b>	<b>4</b>	<b>4</b>	<b>2</b>	<b>1</b>	<b>3</b>	<b>3</b>	

\* ADDITIONAL QUANTITIES LISTED ELSEWHERE

**Removals**

Category	Station	Dir	Location	653.0900 Adjusting Pull Box	653.0905 Removing Pull Box	SPV. 0060.03 Adjusting Concrete Bases	Description
0010	64 113NB + 25	LEFT	106	1			Existing PB101
0010	64 113NB + 28	LEFT	30	1			Existing PB102
0010	64 113NB + 16	RIGHT	38	1			Existing PB103
0010	63 113NB + 12	RIGHT	40	1			Existing PB104
0010	82 113NB + 56	LEFT	144	1			Existing PB110
0010	83 113NB + 7	LEFT	134	1			Existing PB111
0010	83 113NB + 37	LEFT	96		1		Existing PB112
0010	83 113NB + 35	LEFT	27		1		Existing PB113
0010	83 113NB + 20	RIGHT	43	1			Existing PB114
0010	82 113NB + 69	RIGHT	99	1			Existing PB115
0010	82 113NB + 72	RIGHT	84		1		Existing PB116
0010	82 113NB + 10	RIGHT	87	1			Existing PB117
0010	81 113NB + 80	RIGHT	46		1		Existing PB118
0010	81 113NB + 81	LEFT	22		1		Existing PB119
0010	81 113NB + 83	LEFT	93	1			Existing PB120
0010	62 113NB + 94	LEFT	41		1		Existing PB105
0010	62 113NB + 95	LEFT	91	1			Existing PB106
0010	63 113NB + 6	RIGHT	37				Existing SB100
0010	82 113NB + 44	LEFT	114			1	Existing SB101
0010	83 113NB + 9	LEFT	140			1	Existing SB102
0010	83 113NB + 44	LEFT	96			1	Existing SB103
0010	83 113NB + 15	LEFT	26		1		Existing SB104
0010	83 113NB + 17	RIGHT	43		1		Existing SB105
0010	82 113NB + 78	RIGHT	69		1		Existing SB106
0010	82 113NB + 4	RIGHT	74		1		Existing SB107
0010	81 113NB + 68	RIGHT	44		1		Existing SB108
0010	82 113NB + 6	LEFT	29		1		Existing SB109
0010	82 113NB + 10	LEFT	94		1		Existing SB110
0010	63 113NB + 7	LEFT	40		1		Existing SB99
0010	82 113NB + 20	LEFT	105		1		Existing SC2
<b>Total</b>				<b>11</b>	<b>6</b>	<b>7</b>	<b>6</b>

Addendum No. 03  
ID 5420-02-72  
Revised Sheet 183  
February 7, 2023

STATE PROJECT NO: 5420-02-72

HWY: STH 113

COUNTY: DANE

MISCELLANEOUS QUANTITIES

SHEET NO: 183

FILE NAME:

PLOT DATE:

PLOT NAME:

ORG DATE:

ORIGINATOR: DIST\_

PLOT SCALE: 1:1







