



# Wisconsin Department of Transportation

## Division of Transportation Systems Development

Bureau of Project Development  
4822 Madison Yards Way, 4<sup>th</sup> Floor South  
Madison, WI 53705

February 10, 2023

Telephone: (608) 266-1631  
Facsimile (FAX): (608) 266-8459

### NOTICE TO ALL CONTRACTORS:

**Proposal #25: 3700-11-70**  
**Signal Install and Signal Replacement**  
**Various Signalized Intersections**  
**Various Highways**  
**Kenosha County**

### Letting of February 14, 2023

This is Addendum No. 01, which provides for the following:

#### Special Provisions:

| Revised Special Provisions |             |
|----------------------------|-------------|
| Article No.                | Description |
| 6                          | Utilities   |

#### Schedule of Items:

| Added Bid Item Quantities |  |      |                                  |                |                               |
|---------------------------|--|------|----------------------------------|----------------|-------------------------------|
| Bid Item                  | Item Description   | Unit | Proposal Total Prior to Addendum | Quantity Added | Proposal Total After Addendum |
| 650.8501                  | Construction Staking Electrical Installations (3700-11-70) | EACH | 0                                | 1              | 1                             |
| 650.9911                  | Construction Staking Supplemental Control (3700-11-70)     | EACH | 0                                | 1              | 1                             |
| 678.0300                  | Fiber Optic Splice   | EACH | 0                                | 4              | 4                             |

#### Plan Sheets:

| Revised Plan Sheets |   |
|---------------------|---|
| Plan Sheet          | Plan Sheet Title (brief description of changes to sheet)  |
| 3                   | General Notes (edited contacts)   |
| 47                  | Traffic Signal Plan (Added 'Fiber Optic Splice (4) in Existing Fiber Optic Splice Enclosure' text and a leader to the plan sheet) |
| 90                  | Miscellaneous Quantities (Added 'Staking' item to the quantities table)   |
| 94                  | Miscellaneous Quantities (Added 'Fiber Optic Splices' item to the quantities table)   |

The responsibility for notifying potential subcontractors and suppliers of these changes remains with the prime contractor.

Sincerely,

*Mike Coleman*

Proposal Development Specialist  
Proposal Management Section

**ADDENDUM NO. 01**

**3700-11-70**

**February 10, 2023**

**Special Provisions**

**6. Utilities.**

*Replace entire section with the following:*

This contract comes under the provision of Administrative Rule Trans 220.

Bidders are advised to contact each utility company listed in the plans prior to preparing their bids to obtain current information on the status of any utility work within the project work limits.

Coordinate construction activities with a call to Diggers Hotline or a direct call to the utilities that have facilities in the area as required per state statute. Use caution to ensure the integrity of underground facilities and maintain code clearances from overhead facilities at all times.

Known utilities in the project area are as follows:

**AT&T Local Network** has facilities within the project limits, at STH 165 and CTH H intersection. No conflicts with the proposed work are anticipated.

**AT&T Wisconsin** has facilities within the project limits. Along STH 165, at Station 510+14, 84' RT, AT&T has a 6-conduit package near signal base. No conflicts with the proposed work are anticipated.

**CenturyLink Communications, LLC** is leasing fiber facilities within the area of STH 165 and CTH H intersection. No relocations are proposed.

**City of Kenosha – Lighting** – no conflicts with the proposed work anticipated.

**Level 3 Communications, LLC** is leasing fiber facilities within the area of STH 165 and CTH H intersection. No relocations are proposed.

**Midwest Fiber Networks LLC** has facilities within the project limits. No conflicts with the proposed work are anticipated.

**Spectrum** has facilities within the project limits, at STH 165 and CTH H intersection. No conflicts with the proposed work are anticipated.

**Village of Pleasant Prairie – Sewer** has facilities within the project limits, at STH 165 and CTH H intersection. No conflicts with the proposed work are anticipated.

**Village of Pleasant Prairie – Water** has facilities within the project limits, at STH 165 and CTH H intersection. No conflicts with the proposed work are anticipated.

**Vinakom Communications** has facilities near the east end of the project, at STH 165 and CTH H intersection. No conflicts with the proposed work are anticipated.

**WE Energies - Electric** has facilities within the project limits. No relocations are proposed.

**WE Energies - Gas** has facilities within the project limits. The following utility work is planned in the project corridor prior to construction at the STH 165 and CTH H intersection. WE Energies estimates that the work would take 10 working days to complete.

Tying into 8" gas main outside of the valve pit located at Station 511+61, 80' LT.

Installing an 8" p.e. gas main which elbows straight east and crosses STH 165 at Station 512+00.

Gas main will follow the southeast vision corner varying from 3.5' to 9' west of the east right-of-way of CTH H.

Tying into existing gas main on CTH H approximately at Station 28+65, 77' RT.

Any facilities not explicitly identified as being relocated and/or adjusted have been deemed to be not in conflict and will remain in place as is. It is expected that contractors will work safely around any facilities left within the work zone.

It is imperative that the highway contractor contact We Energies before removing any gas facilities, to verify that they have been discontinued and carry no natural gas. The contractor must not assume that unmarked facilities have been discontinued. At no time is it acceptable to push, pull, cut or drill an unmarked facility without explicit consent from We Energies. Contractor must call the We Energies 24-hour Dispatch lines to arrange for this verification.

We Energies Gas Dispatch, #1 (800) 261-5325

#### **Schedule of Items**

Attached, dated February 10, 2023, are the revised Schedule of Items Page 9.

#### **Plan Sheets**

The following 8½ x 11-inch sheets are attached and made part of the plans for this proposal:  
Revised: 47, 90 and 94.

END OF ADDENDUM

Addendum No. 01  
ID 4677-10-71  
Revised Sheet 3  
February 10, 2023

**UTILITY CONTACTS**

DALE DEFEVER  
AT&T LOCAL NETWORK - COMMUNICATION LINE  
39869 LINN ST  
CANTON, WI 48147  
(586) 242-2671  
[DD2579@ATT.COM](mailto:DD2579@ATT.COM)

JEFF MADSON  
WISCONSIN DEPARTMENT OF TRANSPORTATION - COMMUNICATION LINE  
STE. 300  
433 W. ST. PAUL AVE.  
MILWAUKEE, WI 53203-3007  
(414) 225-3723  
[JEFFREY.MADSON@DOT.WI.GOV](mailto:JEFFREY.MADSON@DOT.WI.GOV)

BEAU ABUYA  
SPECTRUM - COMMUNICATION LINE  
1320 N DR MARTIN LUTHER KING JR DR  
MILWAUKEE, WI 53212  
(414) 908-1343  
[WISENGINEERING@CHARTER.COM](mailto:WISENGINEERING@CHARTER.COM)

JOHN STEINBRINK, JR.  
VILLAGE OF PLEASANT PRAIRIE - WATER  
8600 GREEN BAY ROAD  
PLEASANT PRAIRIE, WI 53158  
(262) 925-6768  
[JSTEINBRINK@PLEASANTPRAIRIE.WI.GOV](mailto:JSTEINBRINK@PLEASANTPRAIRIE.WI.GOV)

WE ENERGIES UTILITY COORDINATOR  
WE ENERGIES - ELECTRICITY  
500 S 116TH STREET  
WEST ALLIS, WI 53214  
(414) 221-2738  
[WE-UTILITY-RELOCATIONS@WE-ENERGIES.COM](mailto:WE-UTILITY-RELOCATIONS@WE-ENERGIES.COM)

GENERAL MAIL BOX CENTURYLINK NATIONAL OSP RELOC  
CENTURYLINK COMMUNICATIONS, LLC - COMMUNICATION LINE  
[RELOCATIONS@LUMEN.COM](mailto:RELOCATIONS@LUMEN.COM)

DICKY PATEL  
VINAKOM COMMUNICATIONS  
860 REMINGTON ROAD  
SCHAUMBURG, IL 60173  
(847) 592-5785  
[DICKY.PATEL@VINAKOM.COM](mailto:DICKY.PATEL@VINAKOM.COM)

MIKE VANBOVEN  
AT&T WISCONSIN - COMMUNICATION LINE  
4111 7TH STREET  
RACINE, WI 53403  
(262) 676-3958  
[MV3658@ATT.COM](mailto:MV3658@ATT.COM)

BRIAN CATER  
CITY OF KENOSHA - STREET LIGHTING  
ROOM 305  
625 52ND ST.  
KENOSHA, WI 53140  
(262) 653-4156  
[BCATER@KENOSHA.ORG](mailto:BCATER@KENOSHA.ORG)

RICHARD TRGOVEC  
MIDWEST FIBER NETWORKS LLC - COMMUNICATION LINE  
6070 NORTH FLINT RD  
GLENDALE, WI 53209  
(414) 459-3554  
[RTRGOVEC@MIDWESTFIBERNETWORKS.COM](mailto:RTRGOVEC@MIDWESTFIBERNETWORKS.COM)

JOHN STEINBRINK, JR.  
VILLAGE OF PLEASANT PRAIRIE - SEWER  
8600 GREEN BAY ROAD  
PLEASANT PRAIRIE, WI 53158  
(262) 925-6768  
[JSTEINBRINK@PLEASANTPRAIRIE.WI.GOV](mailto:JSTEINBRINK@PLEASANTPRAIRIE.WI.GOV)

WE ENERGIES UTILITY COORDINATOR  
WE ENERGIES - GAS/PETROLEUM  
500 S 116TH STREET  
WEST ALLIS, WI 53214  
(414) 221-2738  
[WE-UTILITY-RELOCATIONS@WE-ENERGIES.COM](mailto:WE-UTILITY-RELOCATIONS@WE-ENERGIES.COM)

NETWORK RELOCATIONS  
LEVEL 3 COMMUNICATIONS LLC - COMMUNICATION LINE  
1025 EL DORADO BLVD  
BROOMFIELD, CO 80021  
[RELOCATIONS@LUMEN.COM](mailto:RELOCATIONS@LUMEN.COM)

**DNR CONTACT**

BENTON STELZEL  
141 NW BARSTOW ST  
WAUKESHA WI 53188  
(262) 623-0194  
[BENTON.STELZEL@WISCONSIN.GOV](mailto:BENTON.STELZEL@WISCONSIN.GOV)

**SEWRPC CONTACTS**

ROB MERRY (CHIEF SURVEYOR)  
SOUTHEASTERN WISCONSIN REGIONAL PLANNING COMMISSION  
W239N1812 ROCKWOOD DRIVE  
P.O. BOX 1607  
WAUKESHA, WI 53187-1607  
(262) 953-4289  
CELL (920) 912-1036  
FAX (262) 547-1103  
[RMERRY@SEWRPC.ORG](mailto:RMERRY@SEWRPC.ORG)

ANDY TRAEGER (CONSTRUCTION COORDINATOR)  
SOUTHEASTERN WISCONSIN REGIONAL PLANNING COMMISSION  
W239N1812 ROCKWOOD DRIVE  
P.O. BOX 1607  
WAUKESHA, WI 53187-1607  
(262) 953-4296  
CELL (262) 853-8463  
FAX (262) 547-1103  
[ATRAEGER@SEWRPC.ORG](mailto:ATRAEGER@SEWRPC.ORG)

**WISDOT CONTACTS**

WISDOT SIGNALS ENGINEER  
JOYCE MURPHY  
141 NW BARSTOW ST  
WAUKESHA, WI 53187  
(262) 548-5933  
[JOYCE.MURPHY@DOT.WI.GOV](mailto:JOYCE.MURPHY@DOT.WI.GOV)

WISDOT ELECTRICAL FIELD UNIT  
PETER ADAMCZYK  
935 S 60TH STREET  
WEST ALLIS, WI 53214  
(414) 380-1827  
[PETER.ADAMCZYK@DOT.WI.GOV](mailto:PETER.ADAMCZYK@DOT.WI.GOV)

**WISDOT CONTACTS**

WISDOT PROJECT MANAGER  
MALATHI KARRI  
141 NW BARSTOW ST  
WAUKESHA WI 53187  
(262) 548-5847  
[MALATHI.KARRI@DOT.WI.GOV](mailto:MALATHI.KARRI@DOT.WI.GOV)

WISDOT TRAFFIC LIGHTING  
ERIC PEREA  
935 S 60TH STREET  
WEST ALLIS, WI 53214  
(262) 574-5422  
[ERIC.PEREA@DOT.WI.GOV](mailto:ERIC.PEREA@DOT.WI.GOV)

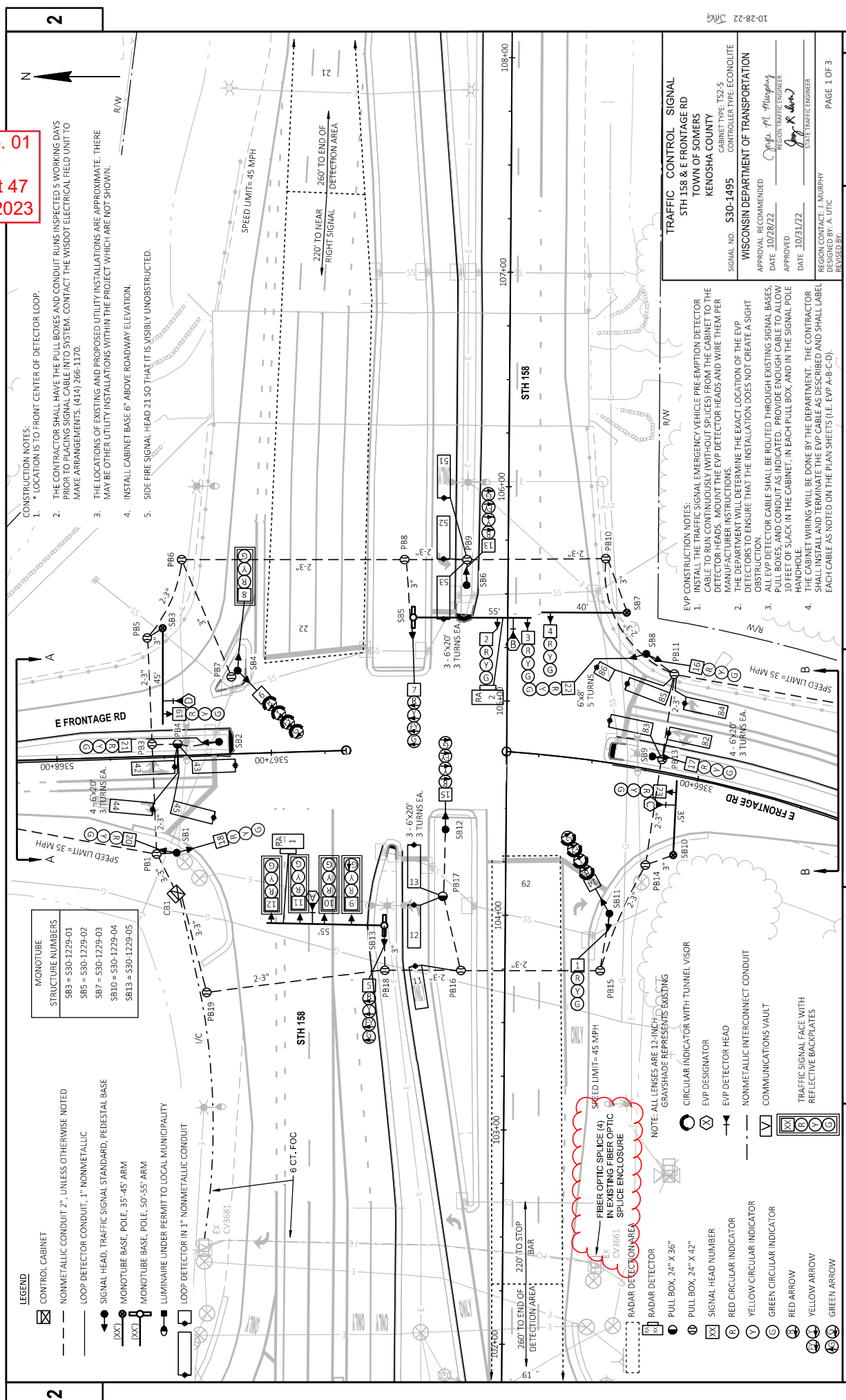
WISDOT ELECTRICAL FIELD UNIT  
DENNIS CAULLEY (LEAD ELECTRICIAN)  
935 S 60TH STREET  
WEST ALLIS, WI 53214  
(414) 266-1162  
[DENNIS.CAULLEY@DOT.WI.GOV](mailto:DENNIS.CAULLEY@DOT.WI.GOV)

WISDOT REGIONAL ENVIRONMENTAL COORDINATOR  
THOMAS CURRAN  
141 NW BARSTOW STREET  
WAUKESHA, WI 53187  
(262) 548-5682  
[THOMAS1.CURRAN@DOT.WI.GOV](mailto:THOMAS1.CURRAN@DOT.WI.GOV)



Dial 811 or (800) 242-8511  
[www.DiggersHotline.com](http://www.DiggersHotline.com)

**Addendum No. 01**  
**ID 3700-11-70**  
**Revised Sheet 47**  
**February 10, 2023**



**TRAFFIC CONTROL SIGNAL**  
**STH 158 & E FRONTAGE RD**  
**TOWN OF SOMERS**  
**KENOSHA COUNTY**  
**WISCONSIN DEPARTMENT OF TRANSPORTATION**

SIGNAL NO. **S30-1495** CABINET TYPE: TS-5  
 CONTROLLER TYPE: ECONOLITE

APPROVAL RECOMMENDED  
 DATE: 10/28/22  
 APPROVED: *Cygnus, P.L. Murphy*  
 REGIONAL TRAFFIC ENGINEER  
 DATE: 10/31/22  
 DESIGNED BY: *Jerry K. DeWitt*  
 STATE TRAFFIC ENGINEER

REVISIONS: NONE  
 REGION CONTACT: J. MURPHY  
 DESIGNED BY: A. UTC  
 REVISED BY:

TRAFFIC SIGNAL PLAN  
 COUNTY: KENOSHA  
 HWY: STH 158  
 PROJECT NO: 3700-11-70  
 SHEET: 47  
 E

FILE NAME: N:\PDS\3700\37001\00\6\330-1495\330-1495\_30.DWG  
 LAYOUT NAME: S30-1495\_01

FLY BY: UTC, ANDY  
 PLOT SCALE: 1" IN 40 FT  
 PLOT DATE: 1/30/2023 1:30 PM  
 PLOT NAME:

GUARDRAIL

| CATEGORY | STATION TO | STATION | LOCATION   | 614.0395                                 | 614.0920               | 614.0950  | 614.0951   |
|----------|------------|---------|--|--|------------------------|---|--|
|          |            |         |  | GUARDRAIL<br>MOW STRIP<br>CONCRETE<br>SY | SALVAGED<br>RAIL<br>LF | REPLACING<br>GUARDRAIL<br>POSTS AND<br>BLOCKS<br>EACH | REPLACING<br>GUARDRAIL<br>RAIL AND<br>HARDWARE<br>LF |
|          | 3366+12    | 3366+25 | SE QUADRANT OF STH 158 & E<br>FRONTAGE RD (TRAFFIC SIGNAL<br>CONDUIT INSTALLATION) | 2  | 13                     |   | 13   |
| 0010     | 105+64     | 105+89  | EB STH 158 (RT)  | 3  | 50                     |   | 50   |
| 0010     | 5367+90    | 5368+15 | EAST FRONTAGE RD (RT)  | 3  | 50                     |   | 50   |
| 0010     |            |         | TOTAL 0010   | 2  | 113                    | 6   | 113  |

Addendum No. 01  
ID 3700-11-70  
Revised Sheet 90  
February 10, 2023

STAKING

| CATEGORY | STATION TO | STATION | LOCATION      | 650.8501.01  | 650.9911.01  |
|----------|------------|---------|---------------|--|--|
|          |            |         |               | CONSTRUCTION STAKING<br>ELECTRICAL INSTALLATIONS<br>(3700-11-70)<br>EACH | CONSTRUCTION STAKING<br>SUPPLEMENTAL CONTROL<br>(3700-11-70)<br>EACH |
| 0010     |            |         | UNDISTRIBUTED | 1  | 1  |
|          |            |         | TOTAL 0010    | 1  | 1  |

STATE FURNISHED MATERIALS SUMMARY

STH 158 & E FRONTAGE RD  
KENOSHA COUNTY  
CATEGORY 0010  
S30-1495

| EACH | DESCRIPTION  |
|------|--|
| 1    | TRAFFIC SIGNAL CONTROLLER, FULLY ACTUATED, 8 PHASE |
| 1    | ETHERNET SWITCH                                    |
| 3    | POLES TYPE 9 SPECIAL                               |
| 2    | POLES TYPE 12                                      |
| 1    | MONOTUBE ARMS 35-FT TYPE 9/10 SPEC POLE            |
| 1    | MONOTUBE ARMS 40-FT TYPE 9/10 SPEC POLE            |
| 1    | MONOTUBE ARMS 45-FT TYPE 9/10 SPEC POLE            |
| 2    | MONOTUBE ARMS 55-FT                                |
| 2    | RADAR DETECTOR                                     |
| 4    | EVP DETECTOR HEADS                                 |

STATE FURNISHED FOR INFORMATION ONLY

| SIGNAL BASE NO. | POLES SPECIAL EACH | POLES TYPE 9 EACH | POLES TYPE 12 EACH | MONOTUBE ARMS 35-FT |                     | MONOTUBE ARMS 40-FT |                     | MONOTUBE ARMS 45-FT |                     | MONOTUBE ARMS 55-FT |    | RADAR DETECTOR EACH | EVP DETECTOR HEADS EACH |
|-----------------|--------------------|-------------------|--------------------|---------------------|---------------------|---------------------|---------------------|---------------------|---------------------|---------------------|----|---------------------|-------------------------|
|                 |                    |                   |                    | TYPE 9/10 SPEC POLE | TYPE 9/10 SPEC POLE | TYPE 9/10 SPEC POLE | TYPE 9/10 SPEC POLE | TYPE 9/10 SPEC POLE | TYPE 9/10 SPEC POLE |                     |    |                     |                         |
| SB3             | 1                  | --                | --                 | --                  | --                  | --                  | --                  | --                  | --                  | --                  | -- | --                  | 1                       |
| SB5             | --                 | 1                 | --                 | --                  | --                  | --                  | --                  | --                  | --                  | --                  | -- | --                  | 1                       |
| SB7             | 1                  | --                | --                 | --                  | --                  | --                  | --                  | --                  | --                  | --                  | -- | --                  | 1                       |
| SB10            | 1                  | --                | --                 | --                  | --                  | --                  | --                  | --                  | --                  | --                  | -- | --                  | 1                       |
| SB13            | --                 | 1                 | --                 | --                  | --                  | --                  | --                  | --                  | --                  | --                  | -- | --                  | 1                       |
| TOTAL           | 3                  | 2                 | 2                  | 1                   | 1                   | 1                   | 1                   | 1                   | 1                   | 2                   | 2  | 2                   | 4                       |

CONDUIT

| FROM      | TO   | DESCRIPTION                                       | 652.0225 | 652.0235 | 652.0605 | 652.0615 |
|-----------|------|---|----------|----------|----------|----------|
| CB1       | PB1  | CONDUIT RIGID NONMETALLIC SCHEDULE 40 2-INCH L.F. | 63       | --       | --       | --       |
| CB1       | PB19 | CONDUIT RIGID NONMETALLIC SCHEDULE 40 3-INCH L.F. | 144      | --       | --       | --       |
| PB1       | PB2  | CONDUIT RIGID NONMETALLIC SCHEDULE 40 3-INCH L.F. | 224      | --       | --       | --       |
| PB1       | SB1  | CONDUIT RIGID NONMETALLIC SCHEDULE 40 3-INCH L.F. | 9        | --       | --       | --       |
| EX CV3681 | CB1  | CONDUIT RIGID NONMETALLIC SCHEDULE 40 3-INCH L.F. | 165      | --       | --       | --       |
| PB1       | PB3  | CONDUIT RIGID NONMETALLIC SCHEDULE 40 3-INCH L.F. | --       | --       | --       | 102      |
| PB3       | PB4  | CONDUIT RIGID NONMETALLIC SCHEDULE 40 3-INCH L.F. | 12       | --       | --       | --       |
| PB3       | PB5  | CONDUIT RIGID NONMETALLIC SCHEDULE 40 3-INCH L.F. | --       | --       | --       | 100      |
| PB4       | SB2  | CONDUIT RIGID NONMETALLIC SCHEDULE 40 3-INCH L.F. | 20       | --       | --       | --       |
| PB5       | SB3  | CONDUIT RIGID NONMETALLIC SCHEDULE 40 3-INCH L.F. | --       | 9        | --       | --       |
| PB5       | PB6  | CONDUIT RIGID NONMETALLIC SCHEDULE 40 3-INCH L.F. | --       | 82       | --       | --       |
| PB5       | PB7  | CONDUIT RIGID NONMETALLIC SCHEDULE 40 3-INCH L.F. | --       | --       | --       | 59       |
| PB6       | PB8  | CONDUIT RIGID NONMETALLIC SCHEDULE 40 3-INCH L.F. | --       | --       | --       | 208      |
| PB7       | SB4  | CONDUIT RIGID NONMETALLIC SCHEDULE 40 3-INCH L.F. | 5        | --       | --       | --       |
| PB8       | SB5  | CONDUIT RIGID NONMETALLIC SCHEDULE 40 3-INCH L.F. | --       | 28       | --       | --       |
| PB8       | PB9  | CONDUIT RIGID NONMETALLIC SCHEDULE 40 3-INCH L.F. | --       | --       | --       | 58       |
| PB9       | SB6  | CONDUIT RIGID NONMETALLIC SCHEDULE 40 3-INCH L.F. | 12       | --       | --       | --       |
| PB9       | PB10 | CONDUIT RIGID NONMETALLIC SCHEDULE 40 3-INCH L.F. | --       | --       | --       | 126      |
| PB10      | SB7  | CONDUIT RIGID NONMETALLIC SCHEDULE 40 3-INCH L.F. | --       | 27       | --       | --       |
| PB10      | PB11 | CONDUIT RIGID NONMETALLIC SCHEDULE 40 3-INCH L.F. | --       | 136      | --       | --       |
| PB11      | SB8  | CONDUIT RIGID NONMETALLIC SCHEDULE 40 3-INCH L.F. | 16       | --       | --       | --       |
| PB11      | PB12 | CONDUIT RIGID NONMETALLIC SCHEDULE 40 3-INCH L.F. | 225      | --       | 15       | --       |
| PB11      | PB13 | CONDUIT RIGID NONMETALLIC SCHEDULE 40 3-INCH L.F. | 5        | --       | --       | 80       |
| PB13      | SB9  | CONDUIT RIGID NONMETALLIC SCHEDULE 40 3-INCH L.F. | --       | --       | --       | --       |
| PB13      | PB14 | CONDUIT RIGID NONMETALLIC SCHEDULE 40 3-INCH L.F. | --       | 14       | --       | 100      |
| PB14      | SB10 | CONDUIT RIGID NONMETALLIC SCHEDULE 40 3-INCH L.F. | --       | 108      | --       | --       |
| PB14      | PB15 | CONDUIT RIGID NONMETALLIC SCHEDULE 40 3-INCH L.F. | 27       | --       | --       | --       |
| PB15      | PB16 | CONDUIT RIGID NONMETALLIC SCHEDULE 40 3-INCH L.F. | 36       | --       | --       | 130      |
| PB16      | PB17 | CONDUIT RIGID NONMETALLIC SCHEDULE 40 3-INCH L.F. | --       | --       | --       | --       |
| PB16      | PB18 | CONDUIT RIGID NONMETALLIC SCHEDULE 40 3-INCH L.F. | --       | --       | --       | 70       |
| PB17      | SB11 | CONDUIT RIGID NONMETALLIC SCHEDULE 40 3-INCH L.F. | 31       | --       | --       | --       |
| PB18      | SB12 | CONDUIT RIGID NONMETALLIC SCHEDULE 40 3-INCH L.F. | --       | 21       | --       | --       |
| PB18      | PB19 | CONDUIT RIGID NONMETALLIC SCHEDULE 40 3-INCH L.F. | --       | --       | --       | 168      |
| TOTAL     |      |   | 787      | 632      | 15       | 1201     |

COMMUNICATIONS EQUIPMENT (FOR INFORMATION ONLY)

| LOCATION       | INSTALL FIBER OPTIC COMMUNICATIONS IN CABINET EACH | ST-ST SINGLE MODE FIBER JUMPER 4-FEET EACH | CAT-5E-CABLE 5-FEET EACH |
|----------------|--|--|--------------------------|
| CB1 (S30-1495) | 1  | 2  | 2                        |
| TOTAL          | 1  | 2  | 2                        |

STATE-FURNISHED COMM. EQUIPMENT (FOR INFORMATION ONLY)

| FROM           | TO | 1/C PB1 | 500 |
|----------------|----|---------|-----|
| CB1 (S30-1495) |    | 1       | 500 |
| TOTAL          |    | 1       | 500 |

| FIBER OPTIC SPLICES |                         |
|---------------------|-------------------------|
| 678,0300            | FIBER OPTIC SPLICE EACH |
| EX CV3661           | 4                       |
| TOTAL               | 4                       |

Addendum No. 01  
ID 3700-11-70  
Revised Sheet 94  
February 10, 2023





Proposal Schedule of Items

Proposal ID: 20230214025 Project(s): 3700-11-70

Federal ID(s): N/A

SECTION: 0001 Signal Work

Alt Set ID: Alt Mbr ID:

| Proposal Line Number | Item ID Description   | Approximate Quantity and Units | Unit Price | Bid Amount |
|----------------------|---|--------------------------------|------------|------------|
| 0244                 | SPV.0060<br>Special 18. INSTALL FIBER OPTIC COMMUNICATIONS IN CABINET STH 158 & E Frontage Rd | 1.000<br>EACH                  | _____.     | _____.     |
| 0246                 | SPV.0060<br>Special 19. CONCRETE BASE TYPE 10 SPECIAL EXTENSION                               | 1.000<br>EACH                  | _____.     | _____.     |
| 0248                 | SPV.0060<br>Special 20. SPECIAL (UTILITY LINE OPENING (ULO))                                  | 6.000<br>EACH                  | _____.     | _____.     |
| 0250                 | SPV.0090<br>Special 01. CABLE TYPE UF 3-14 AWG  | 1,135.000<br>LF                | _____.     | _____.     |
| 0252                 | SPV.0195<br>Special 01. ASPHALT REPAIR SPECIAL  | 18.000<br>TON                  | _____.     | _____.     |
| 0254                 | 650.8501<br>Construction Staking Electrical Installations (project) 01. 3700-11-70            | 1.000<br>EACH                  | _____.     | _____.     |
| 0256                 | 650.9911<br>Construction Staking Supplemental Control (project) 01. 3700-11-70                | 1.000<br>EACH                  | _____.     | _____.     |
| 0258                 | 678.0300<br>Fiber Optic Splice  | 4.000<br>EACH                  | _____.     | _____.     |
| Section: 0001        |   |                                | Total:     | _____.     |
|                      |   |                                | Total Bid: | _____.     |

