



Wisconsin Department of Transportation

February 7, 2023

**Division of Transportation Systems
Development**

Bureau of Project Development
4822 Madison Yards Way, 4th Floor South
Madison, WI 53705

Telephone: (608) 266-1631
Facsimile (FAX): (608) 266-8459

NOTICE TO ALL CONTRACTORS:

**Proposal #32: 4987-02-78, WISC 2023233
C Green Bay, Chantel Street
Beaver Dam Creek Bridge
LOC STR
Brown County**

Letting of February 14, 2023

This is Addendum No. 01, which provides for the following:

Plan Sheets:

Added Plan Sheets	
Plan Sheet	Plan Sheet Title (brief description of why sheet was added)
5A	Added Construction Detail

The responsibility for notifying potential subcontractors and suppliers of these changes remains with the prime contractor.

Sincerely,

Mike Coleman

Proposal Development Specialist
Proposal Management Section

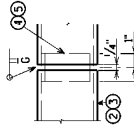
END OF ADDENDUM

GENERAL NOTES

- BID ITEM WILL BE "RAILING PIPE", WHICH INCLUDES ALL ITEMS SHOWN.
- RAILING WILL BE FABRICATED IN LENGTHS THAT INCLUDE 3 OR 4 POSTS.
- ALL MATERIAL SHALL BE GALVANIZED AFTER FABRICATION. PRIOR TO GALVANIZING, ALL STEEL RAILING POSTS AND STEEL TIRING WILL BE GALVANIZED.
- ALL STEEL RAILING POSTS AND STEEL TIRING SHALL BE GALVANIZED.
- HOLES SHALL BE DRILLED IN POST AND RAIL MEMBERS AS REQUIRED TO FACILITATE GALVANIZING AND DRAINAGE.
- ALL MATERIALS USED IN FABRICATION WILL BE MADE FROM MATERIALS CONFORMING TO A.S.T.M. DESIGNATION A709 GRADE 36 UNLESS NOTED OTHERWISE.
- ALL RAILS, POSTS AND SLEEVES ARE STANDARD WEIGHT PIPE, SCHEDULE 40.
- VENT HOLES SHALL BE DRILLED IN POST AND RAIL MEMBERS AS REQD. TO FACILITATE GALVANIZING AND DRAINAGE.
- THE RAILING SHALL BE PAINTED AMS STD. COLOR NO. 27038.

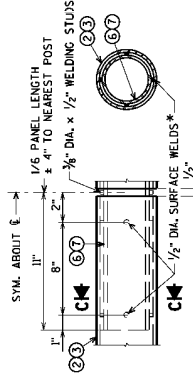
LEGEND

- ① 2" DIA. STEEL PIPE FOR POST. PLACE POSTS VERTICAL.
- ② 2" DIA. STEEL PIPE FOR TOP & BOT. RAIL, WELD TO NO. 1.
- ③ 1" DIA. STEEL PIPE FOR INTERMEDIATE RAILS, WELD TO NO. 1.
- ④ 1" DIA. PIPE SLEEVE FOR NO. 2, PROVIDE "SLIDING FIT" WITH A MINIMUM OUT TO OUT DIMENSION OF 1 3/8".
- ⑤ 1/2" DIA. ROD SLEEVE FOR NO. 3, PROVIDE "SLIDING FIT" WITH A MINIMUM OUT TO OUT DIMENSION OF 3/4".
- ⑥ 1" DIA. PIPE SLEEVE x 1'-10" LONG FOR NO. 2, PROVIDE 1/2" DIA. SURFACE WELDS ON ALL SIDES AS SHOWN. GRIND WELDS TO FIT FREE INTO I.D. OF NO. 2. PROVIDE 3/8" DIA. x 1/2" WELDING STUDS ON TOP AND BOTTOM SURFACES AT CENTERLINE.
- ⑦ 1/2" DIA. ROD SLEEVE x 1'-10" LONG FOR NO. 3, PROVIDE 1/2" DIA. SURFACE WELDS ON ALL SIDES AS SHOWN. GRIND WELDS TO FIT FREE INTO I.D. OF NO. 3. PROVIDE 3/8" DIA. x 1/2" WELDING STUDS ON TOP AND BOTTOM SURFACES AT CENTERLINE.



**SHOP RAIL
SPLICE DETAIL**

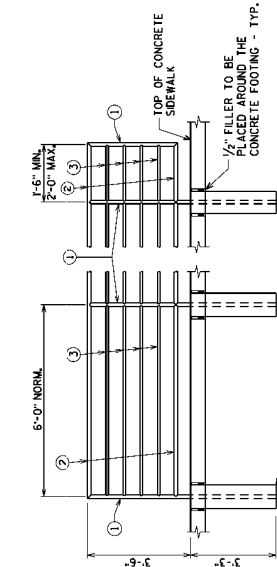
LOCATION MUST BE SHOWN ON THE SHOP DRAWINGS



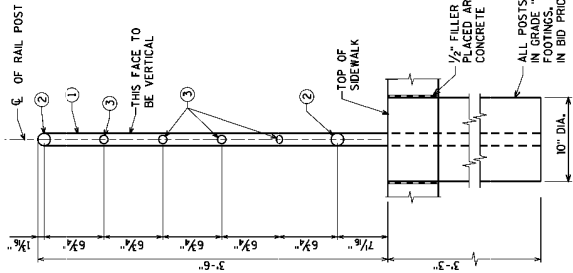
SECTION C

**FIELD ERECTION
JOINT DETAIL**

*MIN. 3/8" FLAT SURFACE DIA. PUNCHINGS OR STUDS MAY BE USED AS AN ALTERNATE.

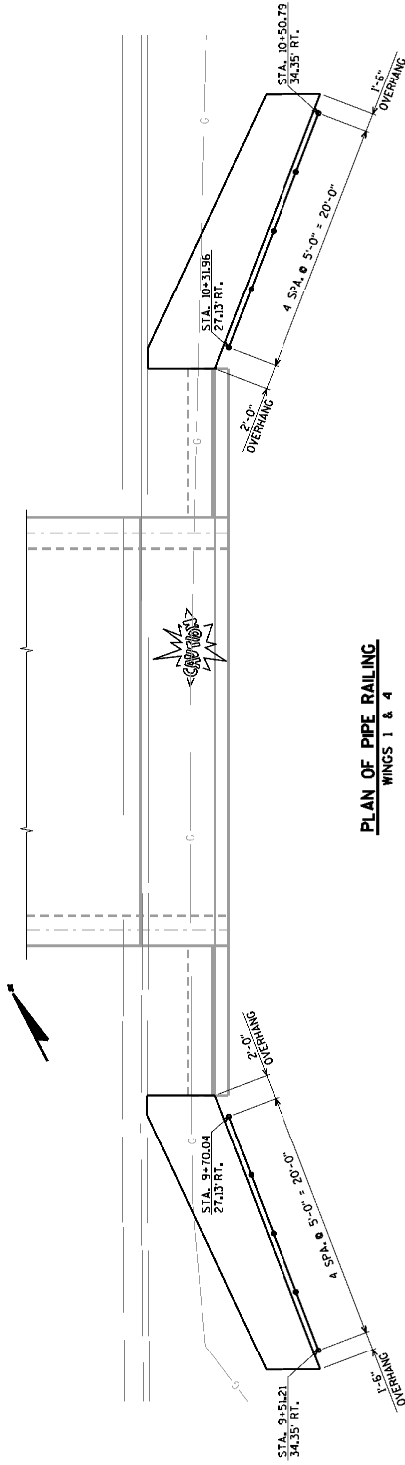


PART ELEVATION OF RAILING



SECTION THRU RAILING

Addendum No. 01
ID 4987-02-78
Added Sheet 5A
February 8, 2023



**PLAN OF PIPE RAILING
WINGS 1 & 4**