

ORDER OF SHEETS

Section No. 1	Title
Section No. 2	General Notes
Section No. 2	Project Overview
Section No. 2	Typical Sections and Details
Section No. 2	Construction Details
Section No. 2	Erosion Control
Section No. 2	Permanent Signing
Section No. 2	Pavement Marking
Section No. 2	Traffic Control Plan
Section No. 2	Alignment Plan
Section No. 3	Miscellaneous Quantities
Section No. 3	Plan and Profile
Section No. 3	Earthwork Quantities
Section No. 3	Gross Sections
TOTAL SHEETS = 34	



06

DESIGN DESIGNATION

A.A.D.T. 2020	=	1,950
A.A.D.T. 2040	=	2,066
D.H.V.	=	-
D.D.	=	-
T.	=	16.3%
DESIGN SPEED	=	55 M.P.H.
ESALS	=	531,150

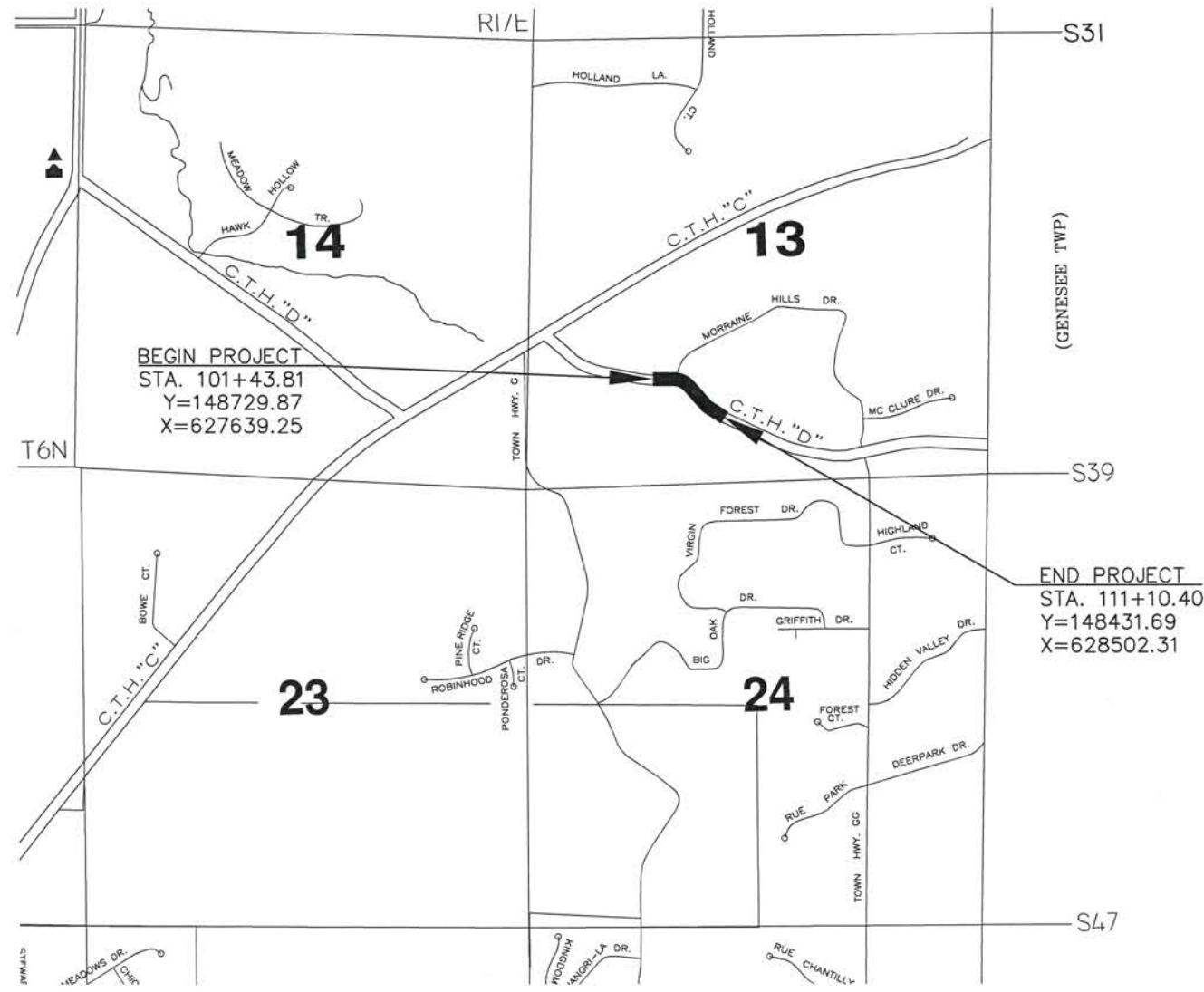
CONVENTIONAL SYMBOLS

PLAN		PROFILE	
CORPORATE LIMITS		GRADE LINE	
PROPERTY LINE		ORIGINAL GROUND	
LOT LINE		MARSH OR ROCK PROFILE (To be noted as such)	
LIMITED HIGHWAY EASEMENT		SPECIAL DITCH	
EXISTING RIGHT OF WAY		GRADE ELEVATION	
PROPOSED OR NEW R/W LINE		CULVERT (Profile View)	
SLOPE INTERCEPT		UTILITIES	
REFERENCE LINE		ELECTRIC	
EXISTING CULVERT		FIBER OPTIC	
PROPOSED CULVERT (Box or Pipe)		GAS	
COMBUSTIBLE FLUIDS		SANITARY SEWER	
MARSH AREA		STORM SEWER	
WOODED OR SHRUB AREA		TELEPHONE	
		WATER	
		UTILITY PEDESTAL	
		POWER POLE	
		TELEPHONE POLE	

STATE OF WISCONSIN
DEPARTMENT OF TRANSPORTATION
PLAN OF PROPOSED IMPROVEMENT

CTH D
INTERSECTION W/MORAIN HILLS DRIVE
CTH D
WAUKESHA COUNTY

STATE PROJECT NUMBER
3782-04-70



LAYOUT
SCALE 0 1/4 MILE

TOTAL NET LENGTH OF CENTERLINE = 0.183 MI. (URBAN)

HORIZONTAL POSITIONS SHOWN ON THIS PLAN ARE WISCONSIN COUNTY COORDINATES, WAUKESHA COUNTY, NAD83 (2011), IN U.S. SURVEY FEET. VALUES ARE GRID COORDINATES, GRID BEARINGS, AND GRID DISTANCES. GRID DISTANCES MAY BE USED AS GROUND DISTANCES.

ALL ELEVATIONS ON THIS PLAN ARE REFERENCED TO NAVD 88 (2012) USING THE WISCONSIN GEOD 12A IN US SURVEY FEET.

STATE PROJECT	FEDERAL PROJECT	
	PROJECT	CONTRACT
3782-04-70	WISC 2023314	1

APPROVED FOR
WAUKESHA COUNTY
DEPARTMENT OF PUBLIC WORKS

10-25-22 *Allison Busch*
Date Director

10/25/22 *Karen Brown*
Date Engineering Services Manager

ORIGINAL PLANS PREPARED BY



10/25/22 *Nathan D. Beth*
Date Signature

STATE OF WISCONSIN
DEPARTMENT OF TRANSPORTATION

PREPARED BY	
Surveyor	WAUK. CO. DEPT. OF PUBLIC WORKS
Designer	WAUK. CO. DEPT. OF PUBLIC WORKS
Project Manager	GREG HAFEMAN, P.E.
Regional Examiner	
Regional Supervisor	BRIAN BOOTHBY, P.E.

APPROVED FOR THE DEPARTMENT
DATE: 11/01/2022 *Suzanne Hoffman*
Signature

E

GENERAL NOTES

NO TREES OR SHRUBS ARE TO BE REMOVED UNLESS INDICATED FOR REMOVAL BY THE ENGINEER.

THE LOCATIONS OF EXISTING AND PROPOSED UTILITY INSTALLATIONS, AS SHOWN ON THE PLANS, ARE APPROXIMATE. THERE MAY BE OTHER UTILITIES AND UTILITY INSTALLATIONS WITHIN THE PROJECT LIMITS THAT ARE NOT SHOWN. CONTRACTOR SHALL VERIFY UTILITY FACILITIES LOCATION AND ELEVATION (X,Y,Z) AND NOTIFY ENGINEER OF ANY CONFLICT. POTHOLING MAY BE REQUIRED AND WILL BE CONSIDERED INCIDENTAL TO OTHER ITEMS.

PAVEMENTS ARE TO BE SAWCUT, AS INDICATED ON THE PLANS, TO PROVIDE A BUTT JOINT AT THE PROJECT LIMITS AND AT ALL ASPHALTIC DRIVEWAYS. SAWCUT AREAS ARE TO BE SQUEEGEED INTO NEAREST GRAVEL SHOULDER OR CURB AND GUTTER.

WHEN THE QUANTITY OF HMA PAVEMENT IS MEASURED FOR PAYMENT BY THE TON, THE DEPTH OR THICKNESS OF THE LAYER SHOWN ON THE PLANS IS APPROXIMATE. THE ACTUAL THICKNESS WILL DEPEND ON THE DISTRIBUTION OF THE MATERIAL AS DIRECTED BY THE ENGINEER.

THE BASE AGGREGATE DENSE 3/4" FOR SHOULDERS ADJACENT TO THE HMA PAVEMENT SHALL NOT BE PLACED UNTIL AFTER THE SURFACE LAYER OF THE HMA PAVEMENT HAS BEEN LAID. AGGREGATE SHALL BE USED TO DRESS VARIABLE WIDTH SHOULDERS.

NEW 2-INCH HMA PAVEMENT SHALL CONSIST OF:
1 LIFT:
2-INCH OF HMA PAVEMENT TYPE 5-LT WITH ASPHALTIC MATERIAL PG 58-28 S

THE CONTRACTOR SHALL NOTIFY DIGGER'S HOTLINE AND AFFECTED UTILITIES PRIOR TO THE START OF WORK TO DETERMINE THE LATEST STATUS OF UTILITY RELOCATIONS. ANY LOCAL MUNICIPAL UTILITY WHICH IS NOT A MEMBER OF A ONE-CALL SYSTEM MUST BE CONTACTED SEPARATELY.

MAINTAIN ONE 11-FOOT MINIMUM LANE AT ALL TIMES. FLAGGER WILL BE REQUIRED AND SHALL BE INCIDENTAL TO OTHER ITEMS.

ROADWAY SHALL BE PAVED WITH SURFACE LAYER NO LATER THAT 5 DAYS FROM MILLING SURFACE. CONTRACTOR TO PROVIDE TEMPORARY MARKINGS ON MILLED SURFACE AND SHALL BE INCIDENTAL TO REMOVING ASPHALT SURFACE MILLING.

INDEX OF SECTION 2 DRAWINGS

- GENERAL NOTES AND PROJECT CONTACTS
- PROJECT OVERVIEW
- TYPICAL EXISTING SECTIONS
- TYPICAL PROPOSED SECTIONS
- PAVEMENT MARKING & PERMANENT SIGNING
- TRAFFIC CONTROL
- ALIGNMENT PLAN
- MISCELLANEOUS QUANTITIES

STANDARD ABBREVIATIONS

A.D.T.	AVERAGE DAILY TRAFFIC	P.C.	POINT OF CURVATURE
AC.	ACRE(S)	P.C.C	POINT OF COMPOUD CURVE
ASPH.	ASPHALT	P.I.	POINT OF INTERSECTION
BM	BENCH MARK	P.L.	PROPERTY LINE
BP	BEGIN PROJECT	P.R.C.	POINT OF REVERSE CURVATURE
C & G	CURB & GUTTER	P.T.	POINT OF TANGENCY
CB	CATCH BASIN	PAV'T.	PAVEMENT
C.S.C.P.	CORRUGATED STEEL CULVERT PIPE	R	RADIUS
C.Y.	CUBIC YARDS	C.P.R.C.	CULVERT PIPE REINFORCED CONCRETE
☐	CENTERLINE	RHF	RIGHT HAND FORWARD
CO.	COUNTY	RT.	RIGHT
C.T.H.	COUNTY TRUNK HIGHWAY	R/W	RIGHT OF WAY
CWT.	HUNDREDWEIGHT	S	SOUTH
D	DEGREE OF CURVE	SAN	SANITARY
D.H.V.	DESIGN HOURLY VOLUME	S.B.	SOUTHBOUND
DISCH.	DISCHARGE	S.D.D.	STANDARD DETAIL DRAWING
E	EAST	S.F.	SQUARE FEET
EA.	EACH	S.S.P.R.C.	STORM SEWER PIPE REINFORCED CONCRETE
E.B.	EASTBOUND	STA.	STATION
EP	END PROJECT	S.Y.	SQUARE YARDS
ESALS	EQUIVALENT SINGLE AXLE LOADS	T	TANGENT
ESMT.	EASEMENT	T	TELEPHONE
F.E.	FIELD ENTRANCE	T.L.E.	TEMPORARY LIMITED EASEMENT
FT.	FOOT (FEET)	VAR.	VARIES
G	GAS	V.P.C.	VERTICAL POINT OF CURVATURE
I.P.	IRON PIPE	V.P.I.	VERTICAL POINT OF INTERSECTION
K	RATE OF VERTICAL CURVATURE	V.P.T.	VERTICAL POINT OF TANGENCY
L	LENGTH	W	WATER MAIN
LB.	POUND(S)	W	WEST
L.F.	LINEAR FEET	W.B.	WESTBOUND
LHF	LEFT HAND FORWARD	WV	WATER VALVE
LS	LUMP SUM	YD.	YARDS
LT.	LEFT		
MH	MANHOLE		
N	NORTH		
N.B.	NORTHBOUND		
NO.	NUMBER		

UTILITIES CONTACTS

COMMUNICATIONS:

LUMEN
3235 INTERTECH DRIVE, SUITE 600
BROOKFIELD, WI 53045-5140
BRAHIM GADDOUR
UTILITY COORDINATOR
PHONE: (414) 908-1072
brahim.gaddour@lumen.com

CHARTER
1320 N. DR. MARTIN LUTHER KING JR. DR.
MILWAUKEE, WI 53212-3980
JAY CHAPMAN
CONSTRUCTION COORDINATOR
PHONE: (414) 908-4793
Jay.Chapman@charter.com

WE-ENERGIES:

ELECTRIC
500 S. 116th STREET
WEST ALLIS, WI 53214
ERIC KICKHAVER
PHONE: (414) 944-5917
eric.kickhaver@we-energies.com

GAS
S13 W33800 STH 18
DELAFIELD, WI 53121
JACOB SPENCER
PHONE: (262) 968-7009
jacob.spencer@we-energies.com

WDNR LIAISON

141 NW BARSTOW ROOM 180
WAUKESHA, WI 53188
MR. CRAIG WEBSTER
ENVIRONMENTAL COORDINATOR – SOUTHEAST REGION
PHONE: (262) 574-2141
craig.webster@wisconsin.gov

SEWRPC LIAISON

W239N1812 ROCKWOOD DR.
P.O. BOX 1607
WAUKESHA, WI 53187-1607
ROB MERRY
PHONE: (262) 953-1036
rmerry@sewrpc.org

WISDOT LIAISON

141 NW BARSTOW ST.
WAUKESHA, WI 53188
GREG HAFEMAN, P.E.
PHONE: (262) 548-8677
greg.hafeman@dot.wi.gov

OTHER CONTACTS

WAUKESHA COUNTY DPW
515 W. MORELAND BLVD.
WAUKESHA, WI 53188

ALLISON BUSSLER
DIRECTOR
(262) 548-7740
ABussler@waukeshacounty.gov

KAREN BRAUN, P.E.
ENGINEERING SERVICES MANAGER
(262) 896-8538
KBraun@waukeshacounty.gov

RYAN HILGENDORF
PROJECT MANAGER
(262) 548-7746
RHilgendorf@waukeshacounty.gov

WAUKESHA COUNTY – HIGHWAY OPERATIONS
1641 WOODBURN RD.
WAUKESHA WI 53188

STEVE SCHULTZ
SIGN/SIGNAL MAINTENANCE
MOBILE: (262)424-9129
SSchultz@waukeshacounty.gov



Dial **811** or (800) 242-8511
www.DiggersHotline.com

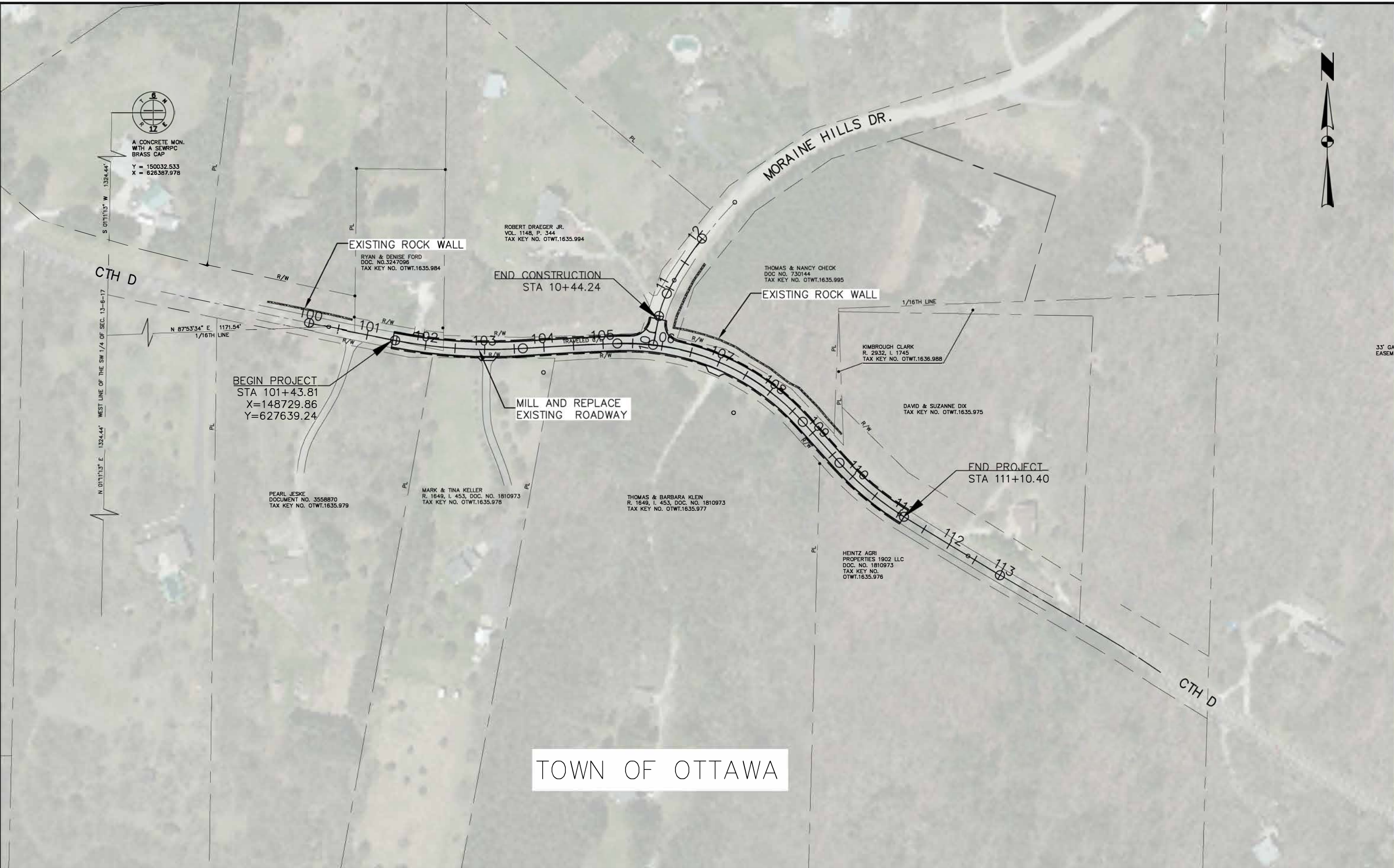
**Call 811 3 Work Days Before You Dig
Or Toll Free (800) 242-8511
Hearing Impaired TDD (800) 542-2289
www.DiggersHotline.com**



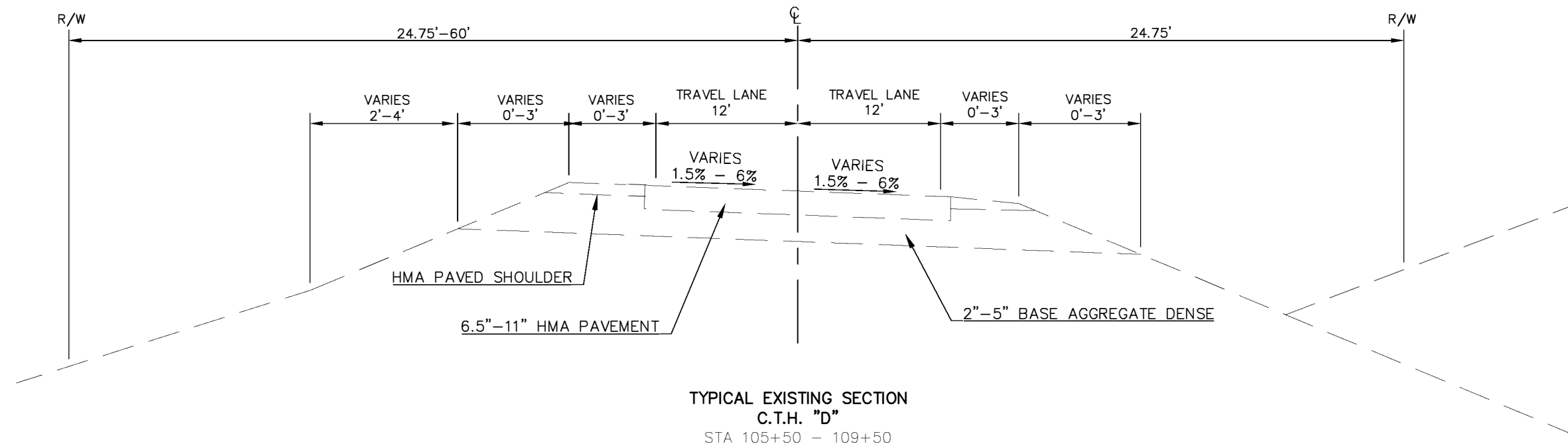
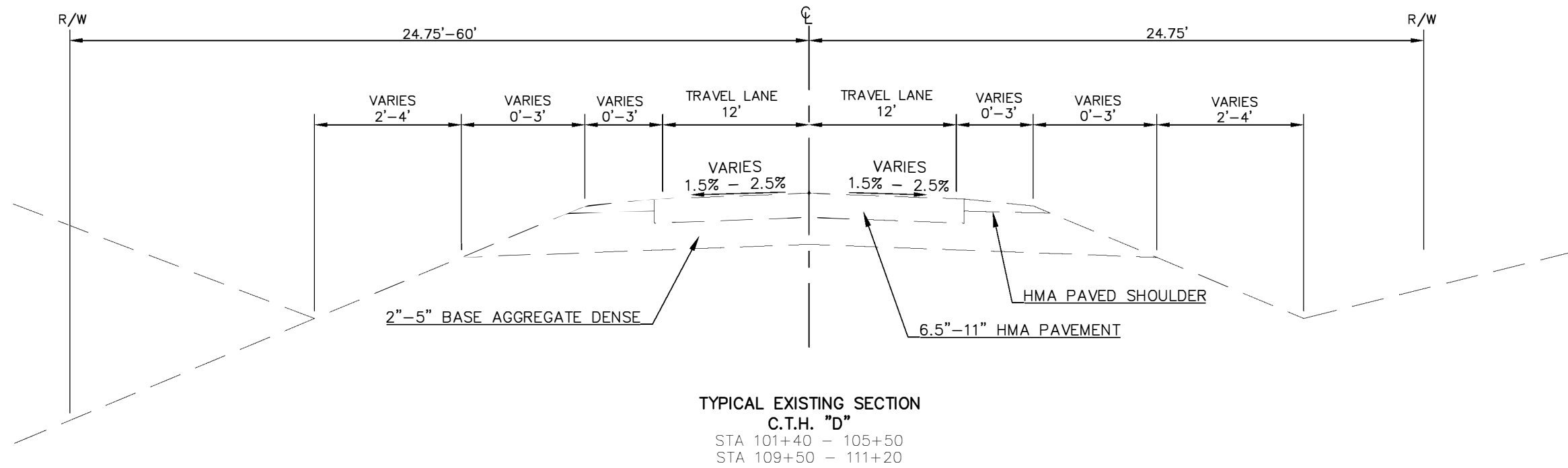
A CONCRETE MON.
WITH A SEWRPC
BRASS CAP
Y = 150032.533
X = 626387.978

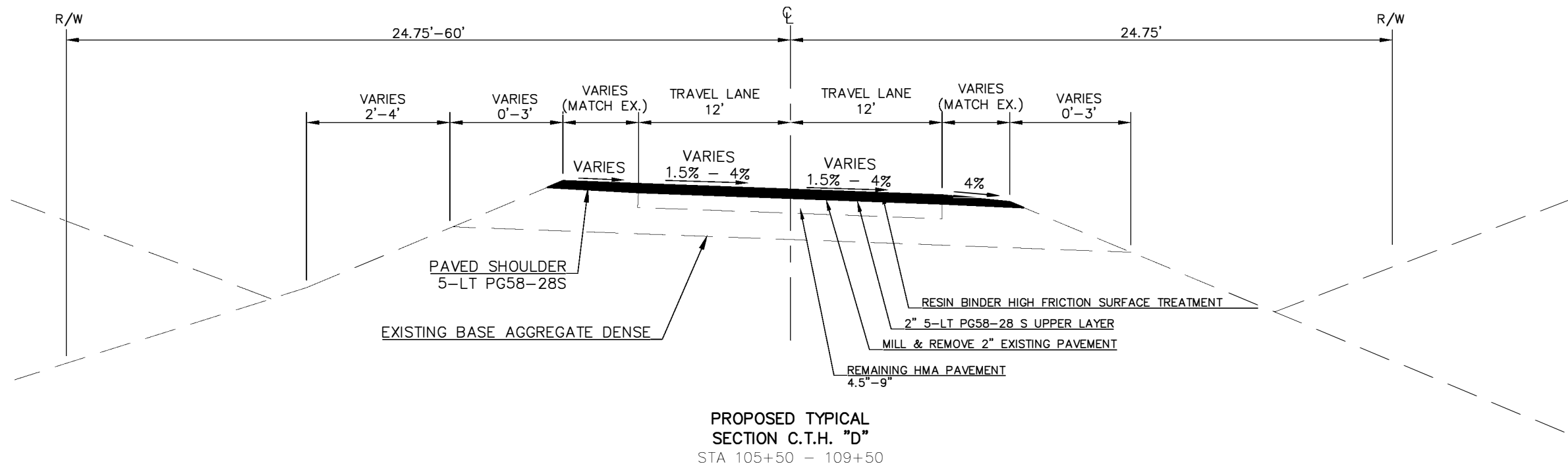
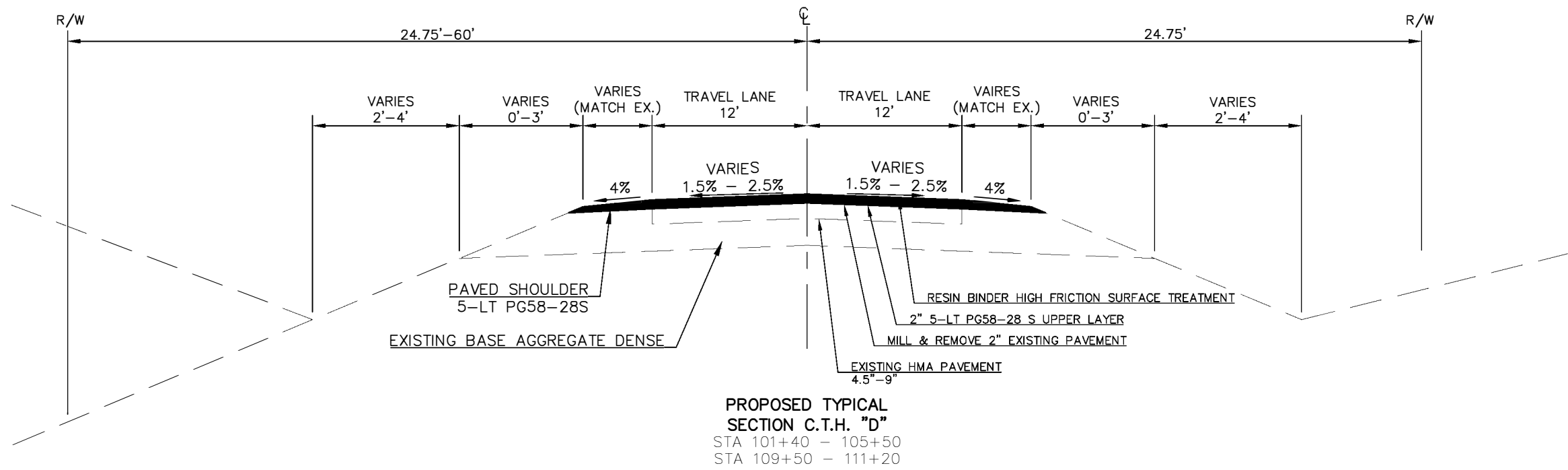


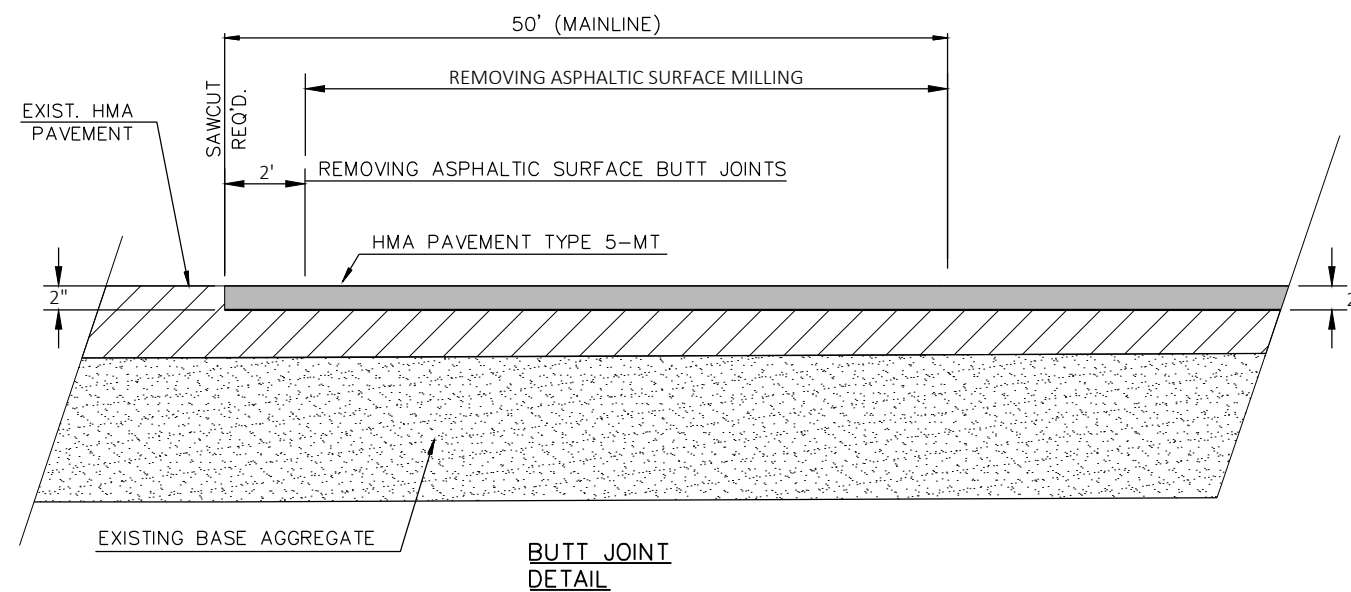
33' GAS
EASEMENT

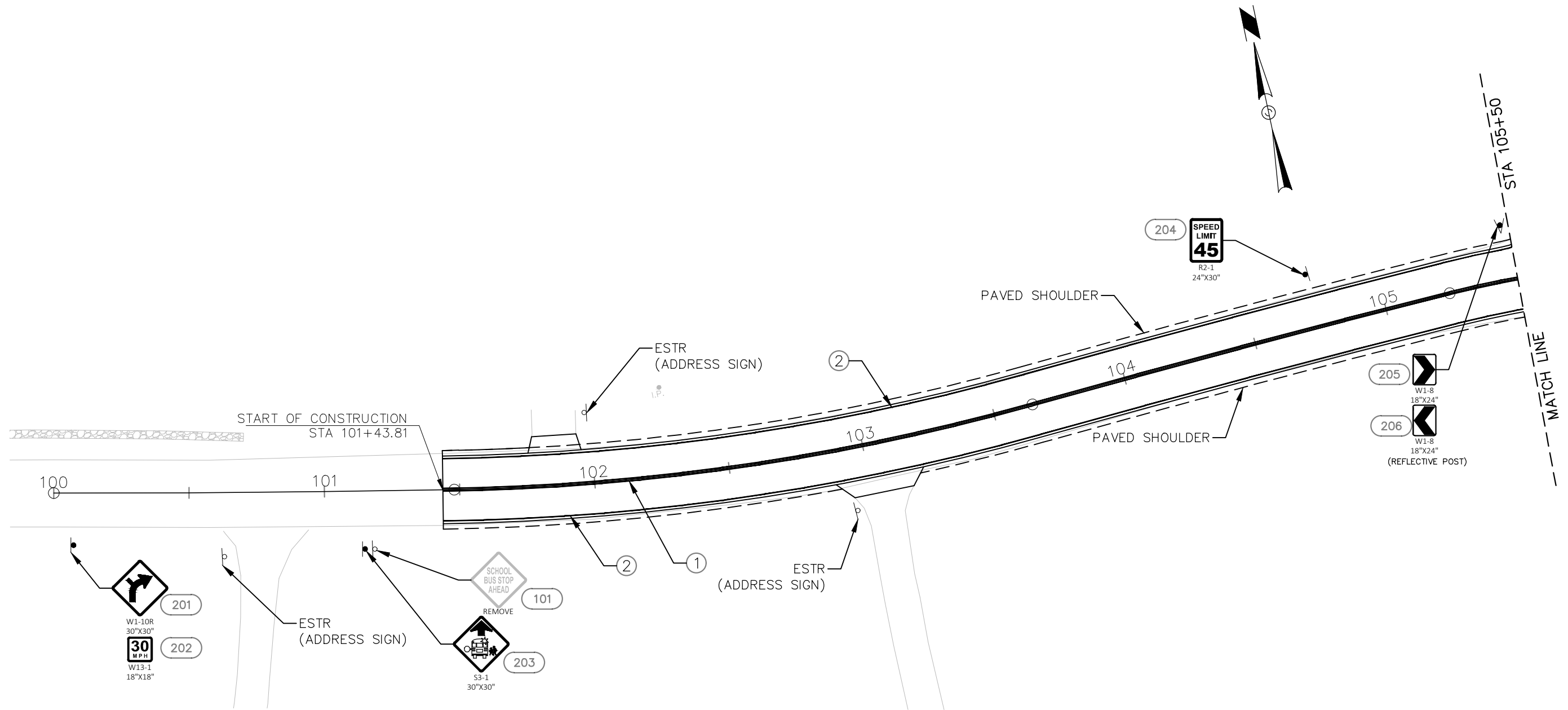


TOWN OF OTTAWA









PAVEMENT MARKING LEGEND

- ① MARKING LINE EPOXY 4-INCH (DOUBLE YELLOW)
- ② MARKING LINE EPOXY 4-INCH (WHITE)
- ③ MARKING STOP LINE EPOXY 18-INCH

LEGEND

- ⊥ EXISTING SIGN
- TYPE II SIGN(S) MOUNTED ON 1-3/4" X 1-3/4" TUBULAR STEEL POST(S) WITH POST ANCHOR BASE
- ESTR EXISTING SIGN TO REMAIN
- ②04 SIGN NUMBER

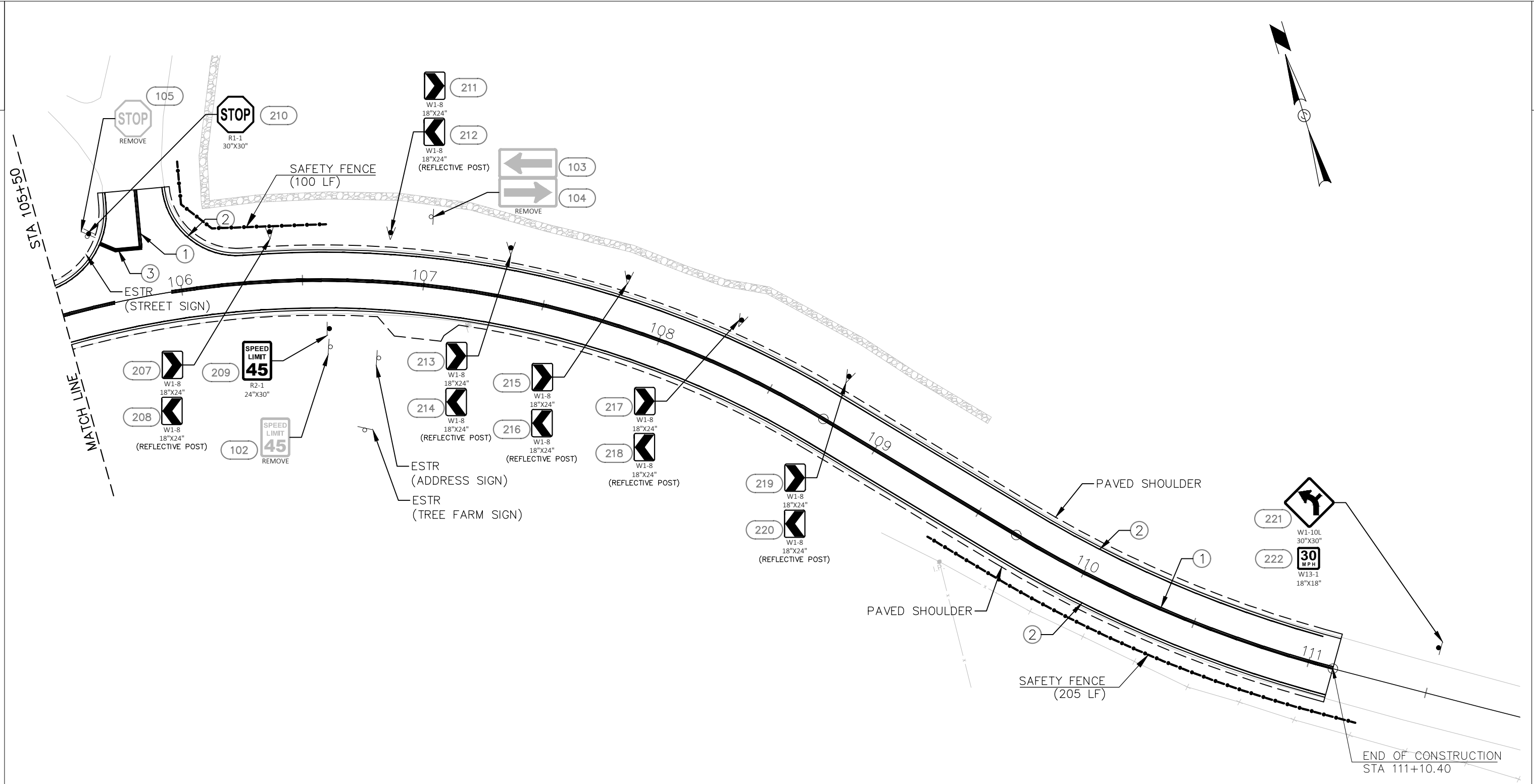
NOTES

ALL SIGNS AND POSTS ARE TO BE RETURNED TO THE WAUKESHA COUNTY DEPT OF PUBLIC WORKS.

THE ERECTION AND PLACEMENT OF ALL SIGNS SHALL BE IN ACCORDANCE WITH THE MANUAL ON UNIFORM TRAFFIC CONTROL DEVICES.

ALL SIGNS SHALL BE DIAMOND GRADE SHEETING.

FINAL LOCATION OF SIGNS SHALL BE DETERMINED BY THE FIELD ENGINEER AND ADJUSTED TO AVOID UTILITY CONFLICTS.



PAVEMENT MARKING LEGEND

- ① MARKING LINE EPOXY 4-INCH (DOUBLE YELLOW)
- ② MARKING LINE EPOXY 4-INCH (WHITE)
- ③ MARKING STOP LINE EPOXY 18-INCH

LEGEND

- ⊖ EXISTING SIGN
- TYPE II SIGN(S) MOUNTED ON 1-3/4" X 1-3/4" TUBULAR STEEL POST(S) WITH POST ANCHOR BASE
- ESTR EXISTING SIGN TO REMAIN
- ②04 SIGN NUMBER

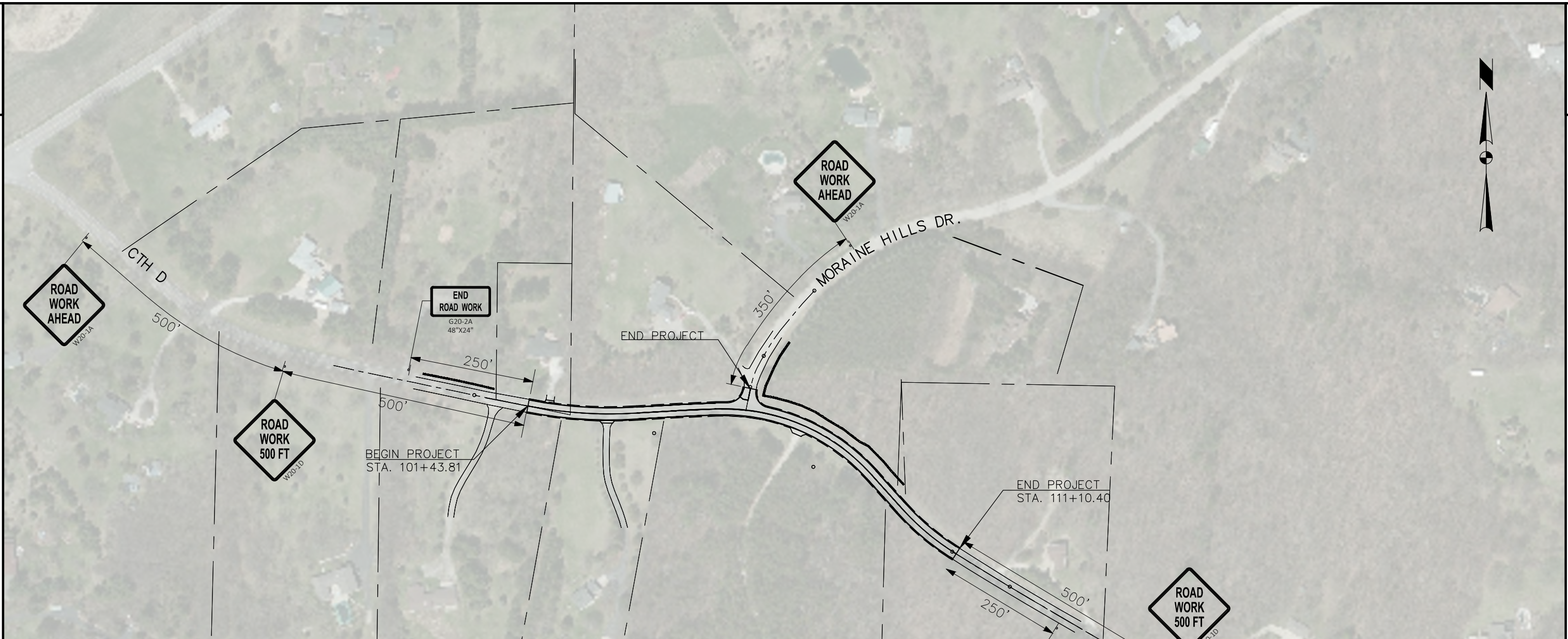
NOTES

ALL SIGNS AND POSTS ARE TO BE RETURNED TO THE WAUKESHA COUNTY DEPT OF PUBLIC WORKS.

THE ERECTION AND PLACEMENT OF ALL SIGNS SHALL BE IN ACCORDANCE WITH THE MANUAL ON UNIFORM TRAFFIC CONTROL DEVICES.

ALL SIGNS SHALL BE DIAMOND GRADE SHEETING.

FINAL LOCATION OF SIGNS SHALL BE DETERMINED BY THE FIELD ENGINEER AND ADJUSTED TO AVOID UTILITY CONFLICTS.



NOTES :

PORTABLE CHANGEABLE MESSAGE BOARDS MUST BE PLACED ALONG EASTBOUND/WESTBOUND CTH D APPROACHES TO PROJECT AREA 7 DAYS PRIOR TO DETOUR. LOCATIONS AS DIRECTED BY ENGINEER. USE THE FOLLOWING MESSAGE.

<u>1ST FRAME</u>	<u>2ND FRAME</u>
ROAD TO CLOSE	BEGINNING <DATE>

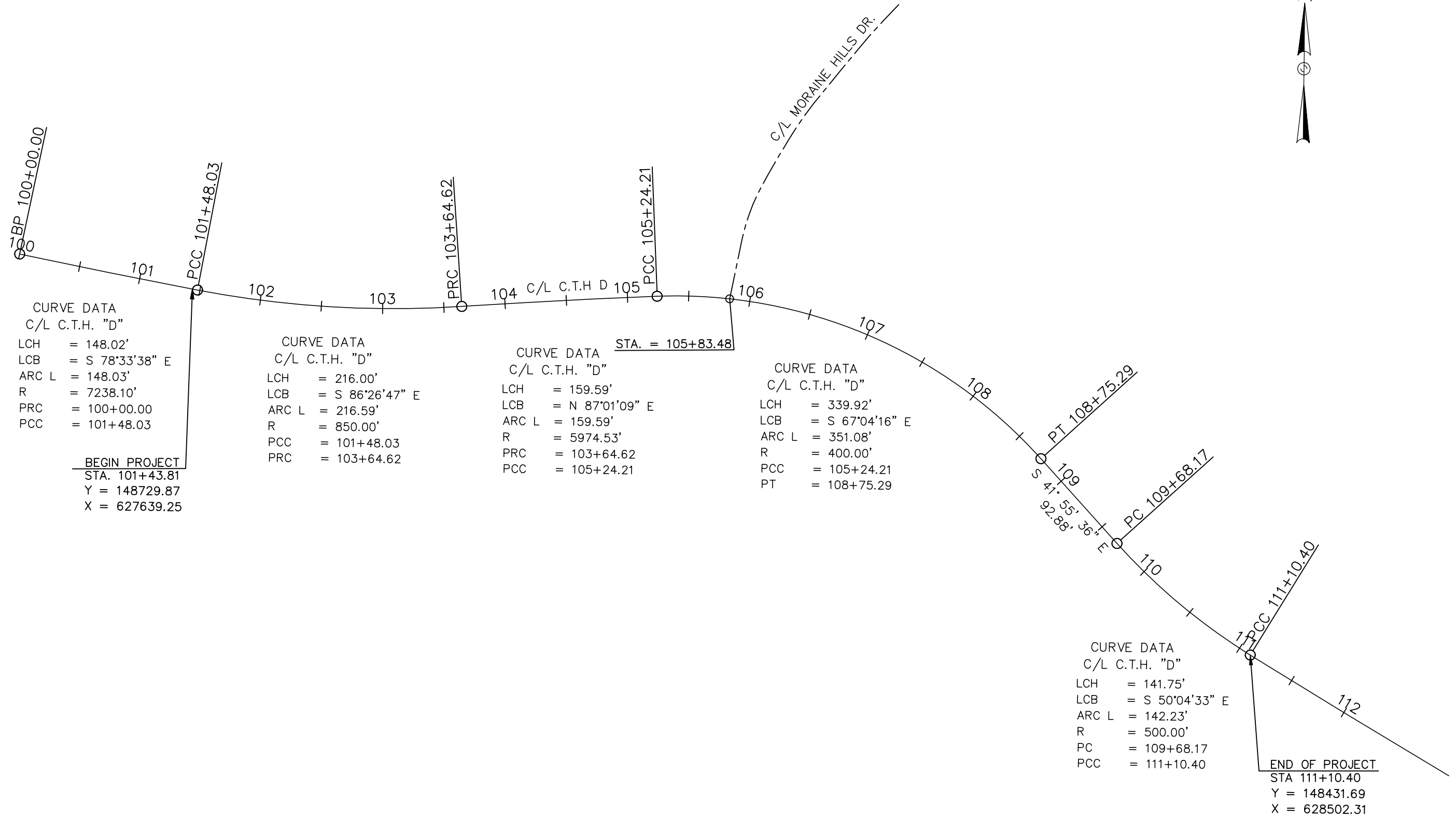
ALL "W" SERIES SIGNS SHALL BE 48" X 48" UNLESS OTHERWISE NOTED

IMMEDIATELY RE-ESTABLISH "STOP" SIGNS THAT ARE REMOVED FOR A CONSTRUCTION OPERATION.

MORaine HILLS DRIVE TO BE CLOSED AT CTH D FOR THE DURATION OF THE SURFACE TREATMENT CURE TIME ON THE WESTBOUND LANE OF CTH D.

TRAFFIC CONTROL LEGEND

⚡ SIGN ON PERMANENT SUPPORT



Estimate Of Quantities

3782-04-70

Line	Item	Item Description	Unit	Total	Qty
0002	204.0115	Removing Asphaltic Surface Butt Joints	SY	60.000	60.000
0004	204.0120	Removing Asphaltic Surface Milling	SY	3,100.000	3,100.000
0006	213.0100	Finishing Roadway (project) 01. 3782-04-70	EACH	1.000	1.000
0008	305.0110	Base Aggregate Dense 3/4-Inch	TON	100.000	100.000
0010	305.0500	Shaping Shoulders	STA	10.000	10.000
0012	390.0203	Base Patching Asphaltic	SY	650.000	650.000
0014	455.0605	Tack Coat	GAL	250.000	250.000
0016	460.2000	Incentive Density HMA Pavement	DOL	400.000	400.000
0018	460.5225	HMA Pavement 5 LT 58-28 S	TON	400.000	400.000
0020	616.0700.S	Fence Safety	LF	305.000	305.000
0022	619.1000	Mobilization	EACH	1.000	1.000
0024	637.2220	Signs Type II Reflective SH	SF	81.500	81.500
0026	638.2602	Removing Signs Type II	EACH	5.000	5.000
0028	643.0900	Traffic Control Signs	DAY	30.000	30.000
0030	643.1050	Traffic Control Signs PCMS	DAY	14.000	14.000
0032	643.3105	Temporary Marking Line Paint 4-Inch	LF	3,900.000	3,900.000
0034	643.5000	Traffic Control	EACH	1.000	1.000
0036	646.1020	Marking Line Epoxy 4-Inch	LF	3,900.000	3,900.000
0038	646.6120	Marking Stop Line Epoxy 18-Inch	LF	20.000	20.000
0040	650.8000	Construction Staking Resurfacing Reference	LF	970.000	970.000
0042	650.9911	Construction Staking Supplemental Control (project) 01. 3782-04-70	EACH	1.000	1.000
0044	ASP.1T0A	On-the-Job Training Apprentice at \$5.00/HR	HRS	275.000	275.000
0046	ASP.1T0G	On-the-Job Training Graduate at \$5.00/HR	HRS	600.000	600.000
0048	SPV.0060	Special 01. Post Tubular Steel 1 3/4" x 1 3/4" x 12'	EACH	13.000	13.000
0050	SPV.0090	Special 01. Reflective Post Panels	LF	48.000	48.000
0052	SPV.0180	Special 01. Resin Binder High Friction Surface Treatment	SY	3,100.000	3,100.000

3

3

PERMANENT SIGNAGE					
LOCATION	SIGN NUMBER	637.2220	SPV.0060.01	638.2602	SPV.0090.01
		SIGN TYPE II REFLECTIVE SH	POST TUBULAR STEEL 1 3/4"x1 3/4"x12'	REMOVING SIGNS TYPE II	REFLECTIVE POST PANELS
		SF	EACH	EACH	LF
100+7.30 R	201, 202	8.5	1	-	-
101+14.78 R	203	6.25	1	-	-
101+18.37 R	101	-	-	1	-
104+74.27 L	204	5	1	-	-
105+47.13 L	205, 206	6	1	-	6
105+67.05 L	105	-	-	1	-
105+67.78 L	210	6.25	1	-	6
106+37.48 L	207, 208	6	1	-	6
106+61.25 R	209	5	1	-	-
106+61.80 R	102	-	-	1	-
106+85.04 L	211, 212	6	1	-	6
107+00.21 L	103, 104	-	-	2	-
107+32.60 L	213, 214	6	1	-	6
107+80.17 L	215, 216	6	1	-	6
108+27.73 L	217, 218	6	1	-	6
108+75.29 L	219, 220	6	1	-	6
111+50.45 L	221, 222	8.50	1	-	-
TOTAL		81.50	13	5	48

SHOULDERS		
LOCATION	305.0110	305.0500
	BASE AGGREGATE DENSE 3/4-INCH	SHAPING SHOULDERS
	TON	STA
PROJECT	100	10
TOTAL	100	10

CONSTRUCTION STAKING		
LOCATION	650.8000	650.9911
	RESURFACING REFERENCE	SUPPLEMENTAL CONTROL
	LF	EACH
PROJECT	967	1
UNDISTRIBUTED	3	--
TOTAL	970	1

MOBILIZATION	
LOCATION	619.1000
	EACH
3782-04-70	1
TOTAL	1

REMOVALS		
LOCATION	204.0115	204.0120
	REMOVING ASPHALTIC SURFACE BUTT JOINTS	REMOVING ASPHALTIC SURFACE MILLING
	SY	SY
PROJECT	60	3100
TOTAL	60	3,100

ASPHALT					
LOCATION	455.0605	390.0203	460.5225	SPV.0180.01	213.0100
	TACK COAT	BASE PATCHING ASPHALTIC 2 MT 58-28 S	HMA PAVEMENT 5 LT 58-28 S	RESIN BINDER HIGH FRICTION SURFACE TREATMENT	FINISHING ROADWAY
	GAL	SY	TON	SY	EACH
PROJECT	250	650	400	3100	1
TOTAL	250	650	400	3,100	1

MARKING					
LOCATION	646.1020		646.6120	643.3105	
	LINE EPOXY 4-INCH YELLOW SOLID	WHITE SOLID	STOP LINE EPOXY WHITE 18-INCH	TEMPORARY MARKING LINE PAINT 4-INCH YELLOW SOLID	WHITE SOLID
	LF	LF	LF	LF	LF
PROJECT	1934	1944	20	1934	1944
UNDISTRIBUTED	12	10	--	12	10
SUBTOTAL	1,946	1,954	20	1,946	1,954
TOTAL	3,900		20	3,900	

TRAFFIC CONTROL							
STAGE	643.5000		643.0900		643.1050		616.0700.S
	TRAFFIC CONTROL EACH	DAY	SIGNS EACH	DAY	SIGNS PCMS EACH	DAY	FENCE SAFETY LF
PROJECT	1	-	7	4	2	7	305
UNDISTRIBUTED			2				
TOTAL	1	-		30		14	305

Standard Detail Drawing List




15C08-22A	LONGITUDINAL MARKING (MAINLINE)
15D48-01	TRAFFIC CONTROL, LANE SHIFT IN FLAGGING OPERATION

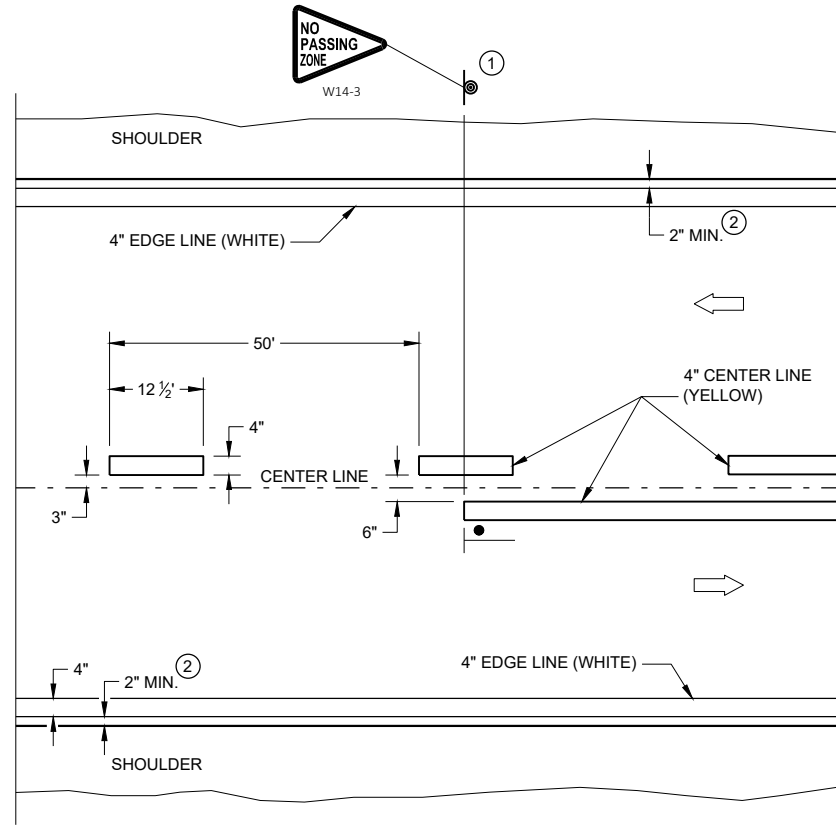
GENERAL NOTES

DETAILS OF CONSTRUCTION NOT SHOWN ON THIS DRAWING SHALL CONFORM TO STANDARD SPECIFICATIONS AND SPECIAL PROVISIONS.

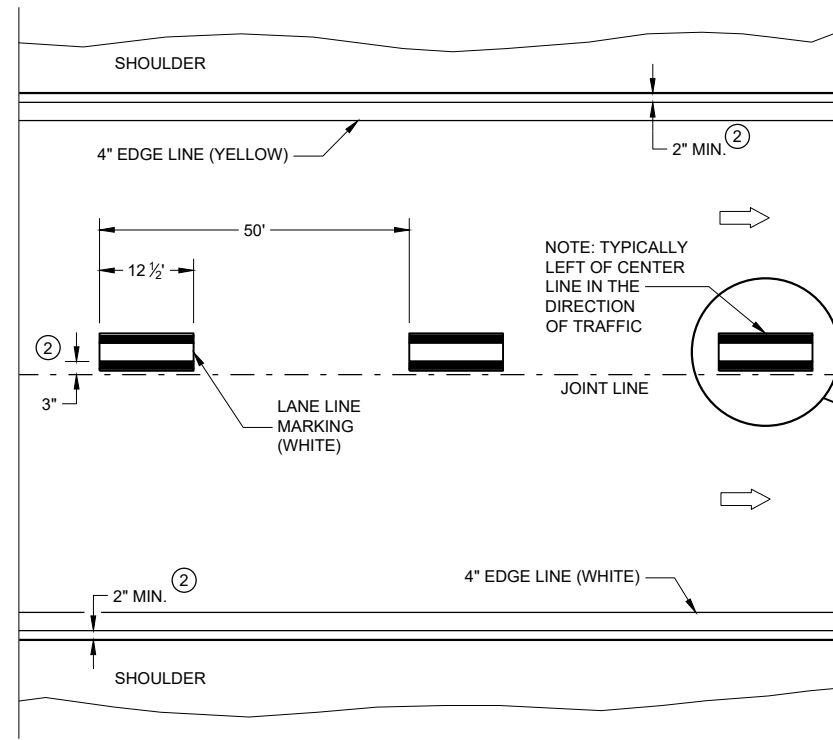
- ① LOCATE THE NO PASSING ZONE W14-3 SIGN WITHIN 50 FEET OF THE "T" MARKING
- ② MEASURE FROM EDGE OF MARKING TO JOINT LINE. THIS DOES NOT INCLUDE SPACE NEEDED FOR GROOVING OPERATIONS.

LEGEND

-  "T" MARKING
-  SIGN ON PERMANENT SUPPORT
-  DIRECTION OF TRAFFIC

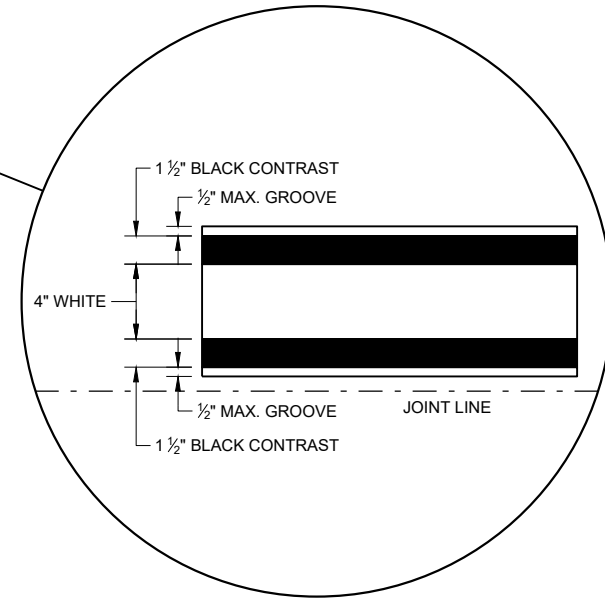


TWO WAY TRAFFIC



ONE WAY TRAFFIC

PERMANENT PAVEMENT MARKING



6

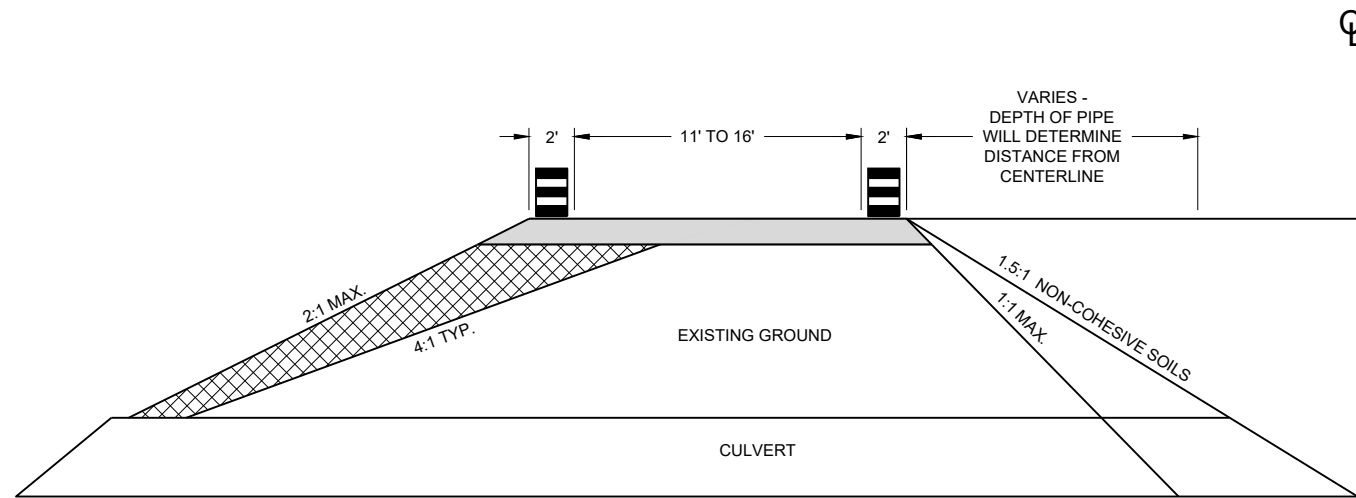
6

PERMANENT LONGITUDINAL PAVEMENT MARKINGS

STATE OF WISCONSIN
DEPARTMENT OF TRANSPORTATION

APPROVED
DATE: May 2022 /S/ Jeannie Silver
STATEWIDE SIGNING AND MARKING ENGINEER

FHWA



CROSS SECTION

GENERAL NOTES

USE 1:1 FOR COHESIVE CLAYS AND SILTS, LOAMS, SANDY CLAYS AND ANGULAR GRAVEL SOILS.
 USE 1.5:1 FOR NON-COHESIVE SOILS.

THE TAPER SHOULD EXTEND ACROSS THE SHOULDER UNLESS DOING SO WOULD GREATLY CONFLICT WITH THE WORK OPERATION.




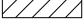

ALL LANE CLOSURE SIGNS SHALL BE REMOVED OR COVERED AND ALL DEVICES REMOVED BEYOND THE SHOULDER WHEN WORK IS NOT IN PROGRESS AND THE LANE IS RESTORED TO A SAFE OPERATING CONDITION.

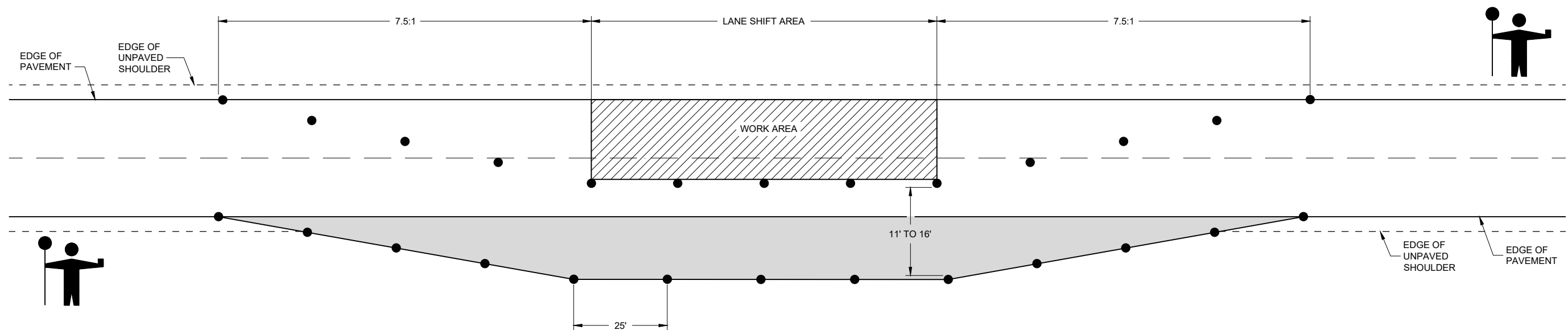
CHANNELIZING DEVICES PLACED ADJACENT TO WORK AREA SHALL BE PULLED BACK FROM TRAVEL LANE WHEN WORK IS NOT IN PROGRESS.

USE WITH SDD 15C12 "TRAFFIC CONTROL FOR LANE CLOSURE WITH FLAGGING OPERATIONS"

USE WITH SDD 15D45 "SIGNING ON ROADWAYS WITH LOOSE GRAVEL"

LEGEND

-  DRUM WITHOUT WARNING LIGHT
-  6" BASE AGGREGATE DENSE 1 1/2" - INCIDENTAL TO LANE SHIFT ITEM
-  FILL - INCIDENTAL TO LANE SHIFT ITEM
-  WORK AREA
-  FLAGGER, EQUIPPED WITH STOP/SLOW PADDLE FASTENED ON SUPPORT STAFF



LANE SHIFT IN FLAGGING OPERATION

**TRAFFIC CONTROL,
 TEMPORARY LANE SHIFT
 DURING CULVERT WORK**

STATE OF WISCONSIN
 DEPARTMENT OF TRANSPORTATION

APPROVED
 February 2021 /S/ Andrew Heidtke
 DATE WORK ZONE ENGINEER

FHWA

6

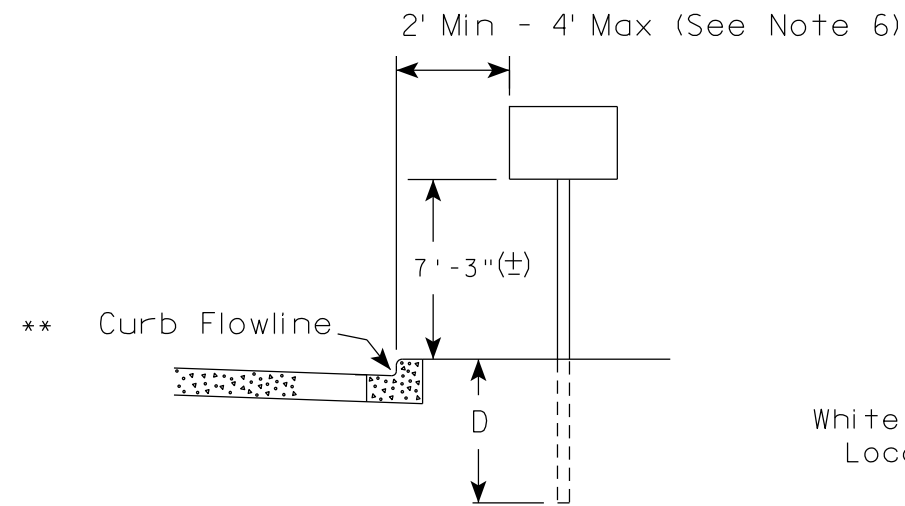
6

SDD 15D48 - 01

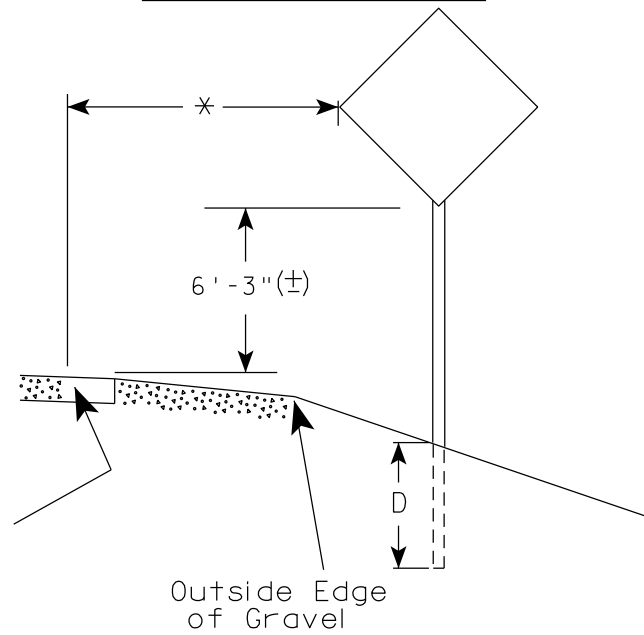
SDD 15D48 - 01

URBAN AREA

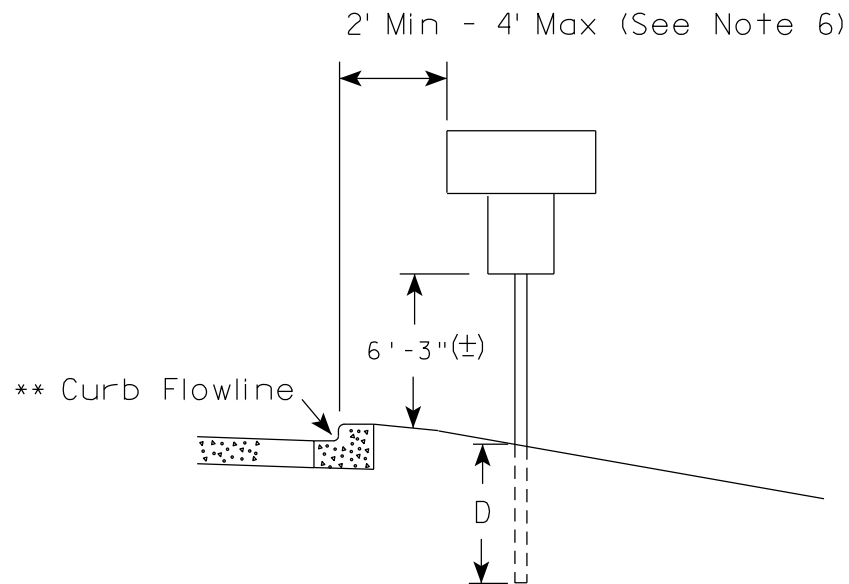
RURAL AREA (See Note 2)



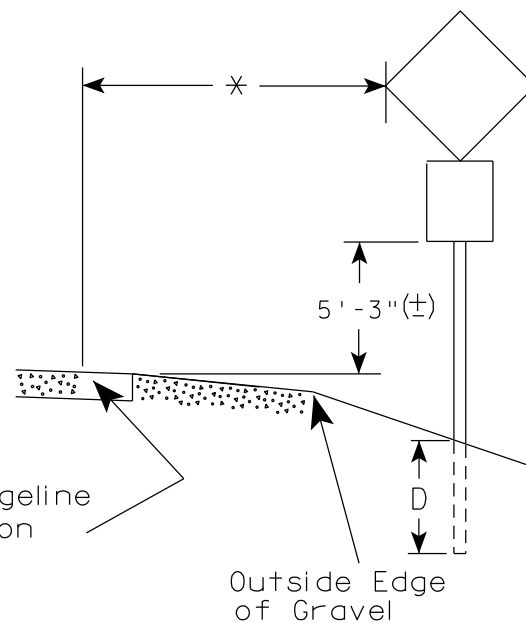
White Edgeline Location



Outside Edge of Gravel



White Edgeline Location



Outside Edge of Gravel

POST EMBEDMENT DEPTH

Area of Sign Installation (Sq. Ft.)	D (Min)
20 or Less	4'
Greater than 20	5'

GENERAL NOTES

1. Signs wider than 4 feet or 20 sq.ft or larger, shall be mounted on multiple posts. Refer to plate A4-4.
2. If signs are mounted on or behind barrier wall, see A4-10 sign plate.
The Double Arrow sign (W12-1D) shall be mounted at a height of 2'-3" (±). The Chevron sign (W1-8), Roundabout Chevron panel (R6-4B), Enhanced Reference Markers, Clearance Markers (W5-52), Mile Markers (D10 series), In Road Object Markers (W5-54) & End of Road Markers (W5-56) shall be mounted at a height of 4'-3" (±).
3. For expressways and freeways, mounting height is 7'- 3" (±) or 6'-3" (±) depending upon existence of a sub-sign.
4. Minimum mounting height for signs mounted on traffic signal poles is 5'- 3" (±).
5. Offset distance shall be consistent with existing signs or consistent throughout length of project.
6. The (±) tolerance for mounting height is 3 inches.
7. Folding signs shall be mounted at a height of 5'-3" (±) or as directed by the Engineer.

7

7

* * The existence of curb and gutter does not in itself mandate the vertical clearance illustrated. That height is typically measured where there is sidewalk adjacent to the roadway or parking is permitted. In the absence of sidewalk vertical clearance is measured from the top of the curb. Offset of signs is measured from the flow line.

* 6 feet from edge of a paved shoulder or 12 feet from the edge of pavement (edge line location) or 2 feet from outside edge of gravel, whichever is greater unless directed by project engineer.

TYPICAL INSTALLATION OF PERMANENT TYPE II SIGNS ON SINGLE POSTS

WISCONSIN DEPT OF TRANSPORTATION

APPROVED *Matthew R. Rauch*
for State Traffic Engineer

DATE 5/13/2020 PLATE NO. A4-3.22



ELEVATION VIEW

DETAIL OF WOOD 4 X 6 SIGN POST IN BOX-OUT

- NOTES:**
1. ALL MATERIAL TO BE APPROVED BY ENGINEER PRIOR TO INSTALLATION
 2. SEE SIGN PLATE A4-8 FOR SIGN HARDWARE REQUIREMENTS
 3. 18 INCH X 18 INCH SQUARE BOX-OUTS MAY BE USED FOR INSTALLATIONS IN EXISTING CONCRETE OR ASPHALT LOCATIONS.



ELEVATION VIEW

DETAIL OF STEEL 2 X 2 SIGN POST IN BOX-OUT



PLAN VIEW

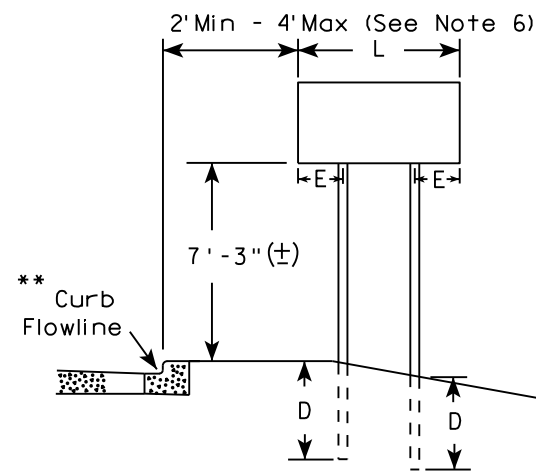
FOR NEW CONCRETE/ ASPHALT INSTALLATIONS

SIGN POST BOX-OUTS A4-3B	
<small>WISCONSIN DEPT OF TRANSPORTATION</small>	
APPROVED <i>Matthew R. Rauch</i> <small>for State Traffic Engineer</small>	
<small>DATE 1/27/14</small>	<small>PLATE NO. A4-3B.1</small>

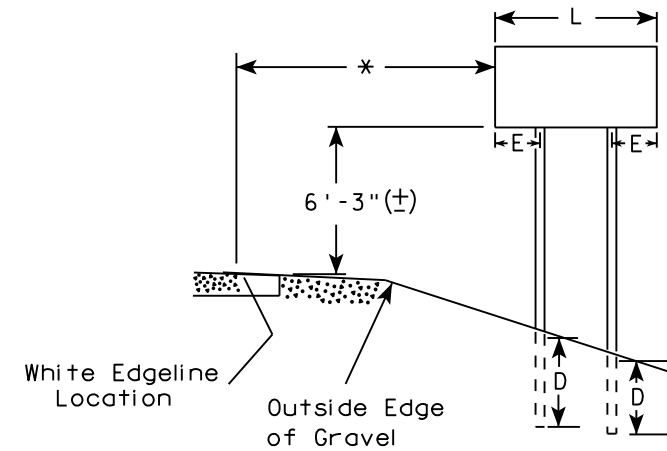
GENERAL NOTES

1. For 3 or 4 post installations, individual post spacing shall be greater than 3'-6".
2. See tables below for required number of posts.
3. For expressways and freeways, mounting height is 7'-3" (±) or 6'-3" (±) depending upon existence of sub-sign.
4. The (±) tolerance for mounting height is 3 inches.
5. J-Assemblies are considered to be one sign for mounting height.
6. Offset distance shall be consistent with existing signs or consistent throughout length of project.
7. Folding signs shall be mounted at a height of 5'-3" (±) or as directed by the engineer.
8. The Double Arrow sign (W12-1) shall be mounted at a height of 2'-3" (±). The Chevron sign (W1-8), Roundabout Chevron panel (R6-4B), Clearance Markers (W5-52), Mile Markers (D10 series), In Road Object Markers (W5-54) & End of Road Markers (W5-56) shall be mounted at a height of 4'-3" (±).

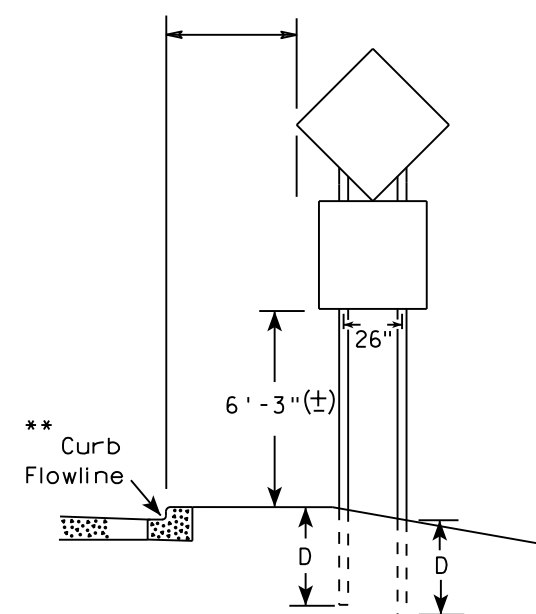
URBAN AREA



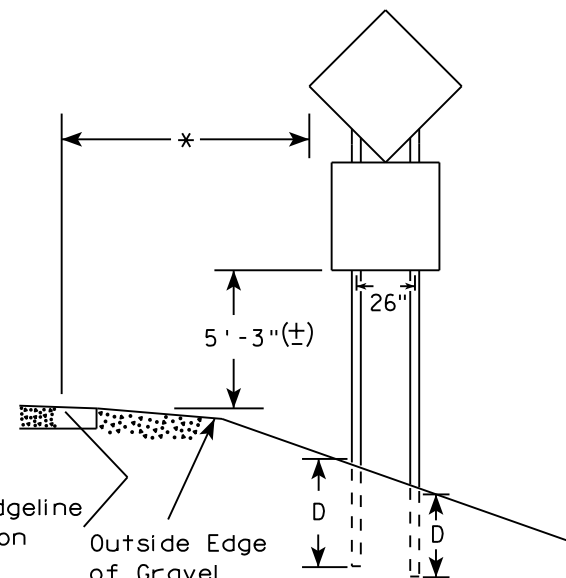
RURAL AREA (See Note 3)



2' Min - 4' Max (See Note 6)



48" DIAMOND WARNING SIGN



48" DIAMOND WARNING SIGN

* 6 feet from edge of a paved shoulder or 12 feet from the edge of pavement (edge line location) or 2 feet from outside edge of gravel, whichever is greater unless directed by project engineer.

** The existence of curb and gutter does not in itself mandate the vertical clearance illustrated. That height is typically measured where there is sidewalk adjacent to the roadway or parking is permitted. In the absence of sidewalk vertical clearance is measured from the top of the curb. Offset of signs is measured from the flow line.

*** See A4-3 sign plate for signs 4' or less in width and less than 20 S.F. in area.

SIGN SHAPE OTHER THAN DIAMOND (TWO POSTS REQUIRED)	
L	E
Greater than 48" Less than 60"	12"
60" to 108"	L/5

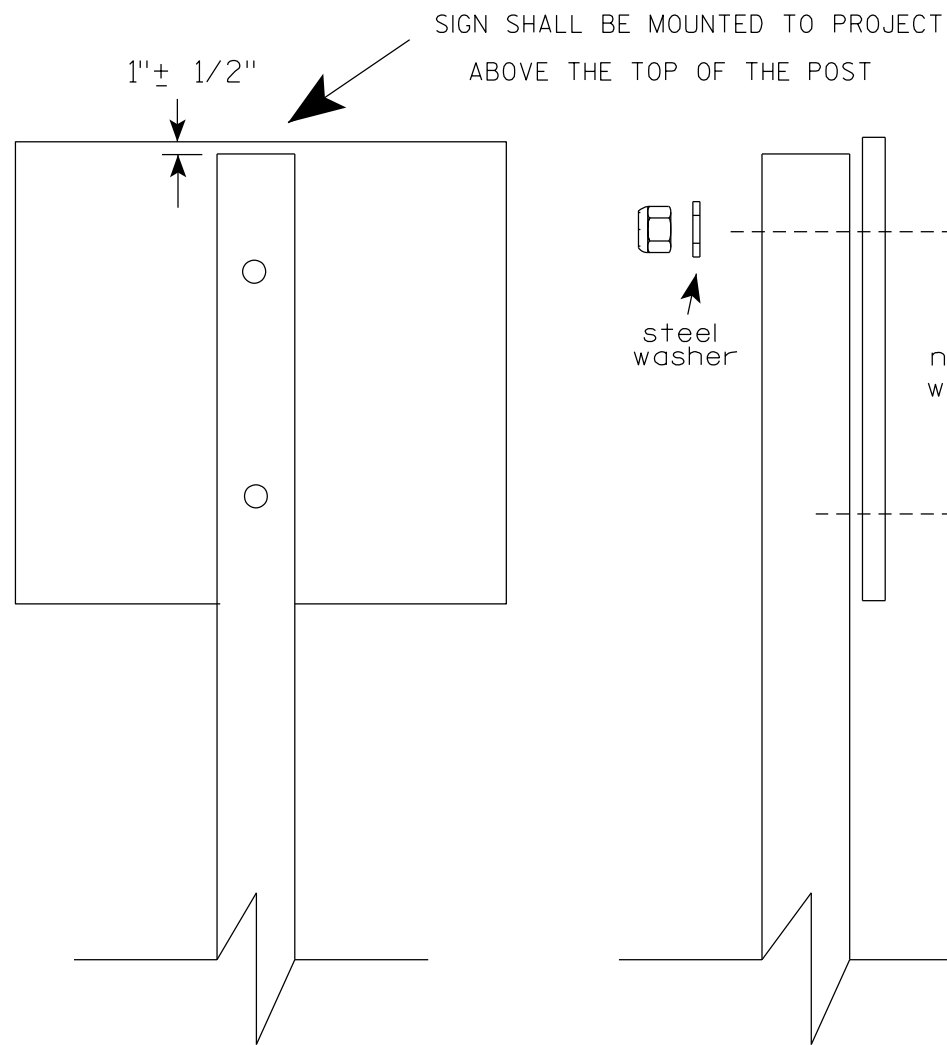
SIGN SHAPE OTHER THAN DIAMOND (THREE POSTS REQUIRED)	
L	E
Greater than 108" to 144"	12"

POST EMBEDMENT DEPTH

Area of Sign Installation (Sq. Ft.)	D (Min)
20 or Less	4'
Greater than 20	5'

TYPICAL INSTALLATION OF TYPE II SIGNS ON MULTIPLE POSTS

WISCONSIN DEPT OF TRANSPORTATION
 APPROVED *Matthew R. Rauch*
 For State Traffic Engineer
 DATE 8/21/17 PLATE NO. A4-4.15



Nuts, bolts and lags used for mounting signs shall have hexagonal heads and shall be either :

- a. Hot dip galvanized in accordance with ASTM Designation: A 153, Class D, or SC 3
- b. Electro-galvanized in accordance with ASTM Designation : B 633, TYPE III, SC 3.

Threads on bolts and nuts shall be manufactured with sufficient allowance for the cadmium plate or galvanized coating to permit the nuts to run freely on the bolts.

STRINGER BOLTING TO ALUMINUM SIGNS (SEE SIGN PLATE A4-18)

MACHINE BOLTS - 5/16" X 1-3/4" Length w/ lock nuts

WOOD POSTS (4" x 6")

LAG SCREWS - 3/8" X 3" (NO STRINGERS ON BACK OF SIGN)
3/8" X 4" (STRINGERS ON BACK OF SIGN)

SQUARE STEEL POSTS (2" x 2")

MACHINE BOLTS - 3/8" X 3-1/4" Length w/ nuts (NO STRINGER ON BACK OF SIGN)
3/8" X 5" Length w/ nuts (STRINGERS ON BACK OF SIGN)

RIVETS - 9/32" (6605-9-6) BULB-TITE, TRI-FOLD, ALUMINUM BODY/MANDREL
O.D. FLANGE .720-.765 INCH, GRIP RANGE .042-.375 INCH

WASHERS (ALL POSTS) -

1-1/4" O.D. X 3/8" I.D. X 1/16" STEEL

1-1/4" O.D. X 3/8" I.D. X .080 NYLON

* Two different fastening systems are shown for illustration purposes. On any individual sign, either one or the other system shall be used. Actual number of fasteners per sign varies with the sign area, but normally there are two. For a single post installation, all signs greater than 9 sq. ft. require the use of 3 fasteners.

ATTACHMENT OF SIGNS
TO POSTS

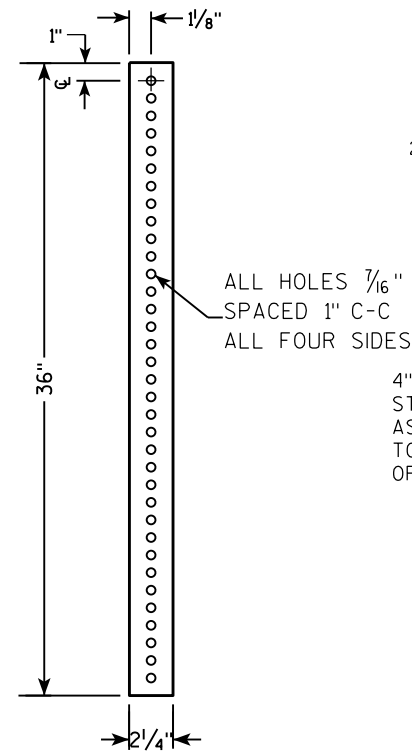
WISCONSIN DEPT OF TRANSPORTATION

APPROVED *Matthew R Rauch*
For State Traffic Engineer

DATE 4/1/2020 PLATE NO. A4-8.9

**TELESCOPIC TUBING ANCHORS
TWO PIECE SYSTEM**

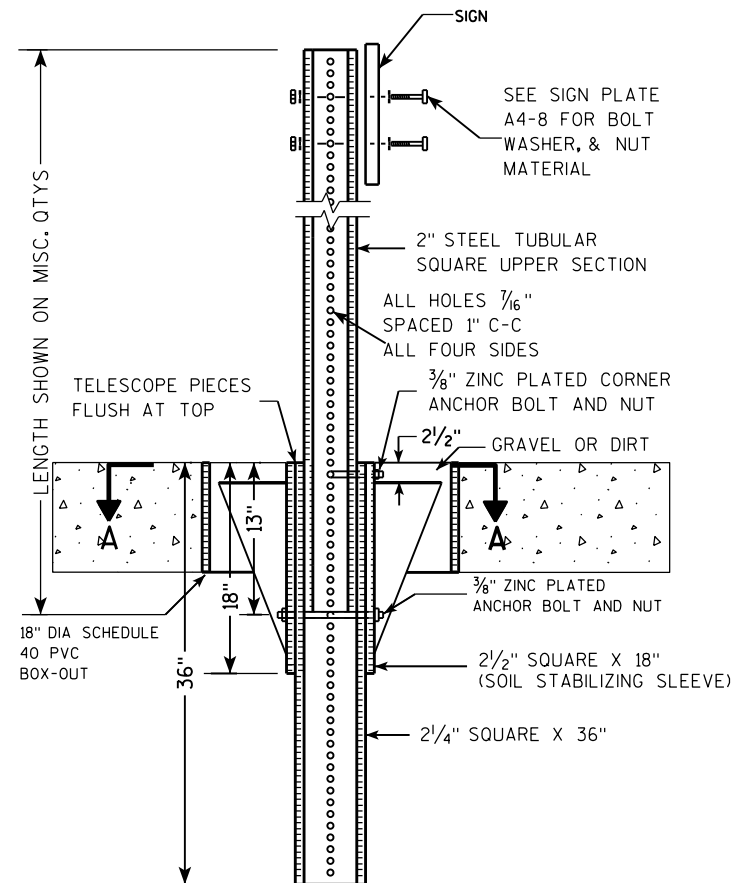
2 1/4" SQUARE
12 GAUGE
PERFORATED
GALVANIZED FINISH



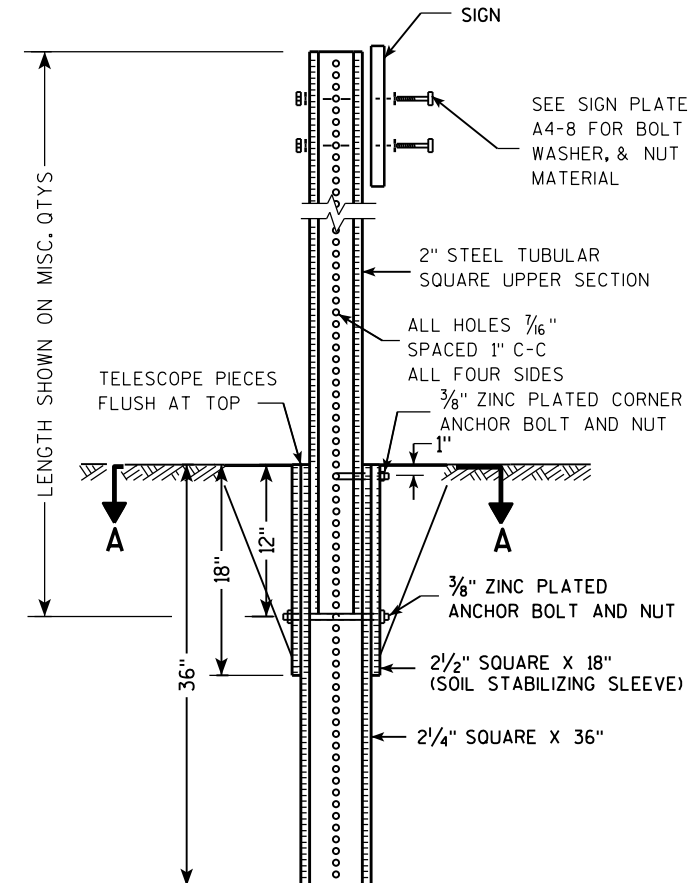
2 1/2" SQUARE
12 GAUGE
OMNI-DIRECTIONAL
PERFORATED
SOIL STABILIZING SLEEVE
GALVANIZED FINISH



**DETAIL OF TUBULAR STEEL SIGN POST
(IN POURED CONCRETE OR ASPHALT)**



**DETAIL OF TUBULAR STEEL SIGN POST
(IN LOCATIONS OTHER THAN POURED CONCRETE OR ASPHALT)**



Area of Sign Installation (Sq. Ft.)	Number of Required Posts
9 or less	1
Greater than 9 less than or equal to 18	2
Greater than 18 less than or equal to 27	3

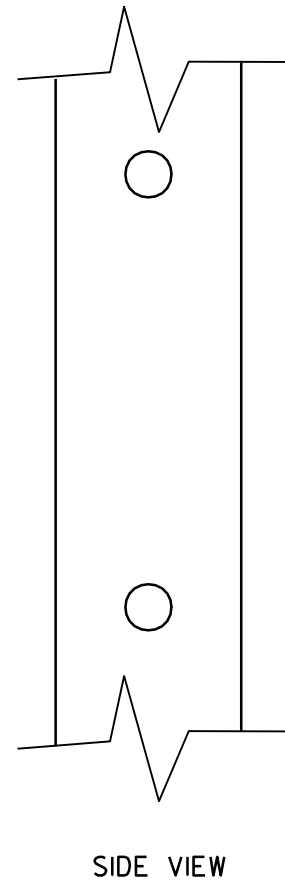
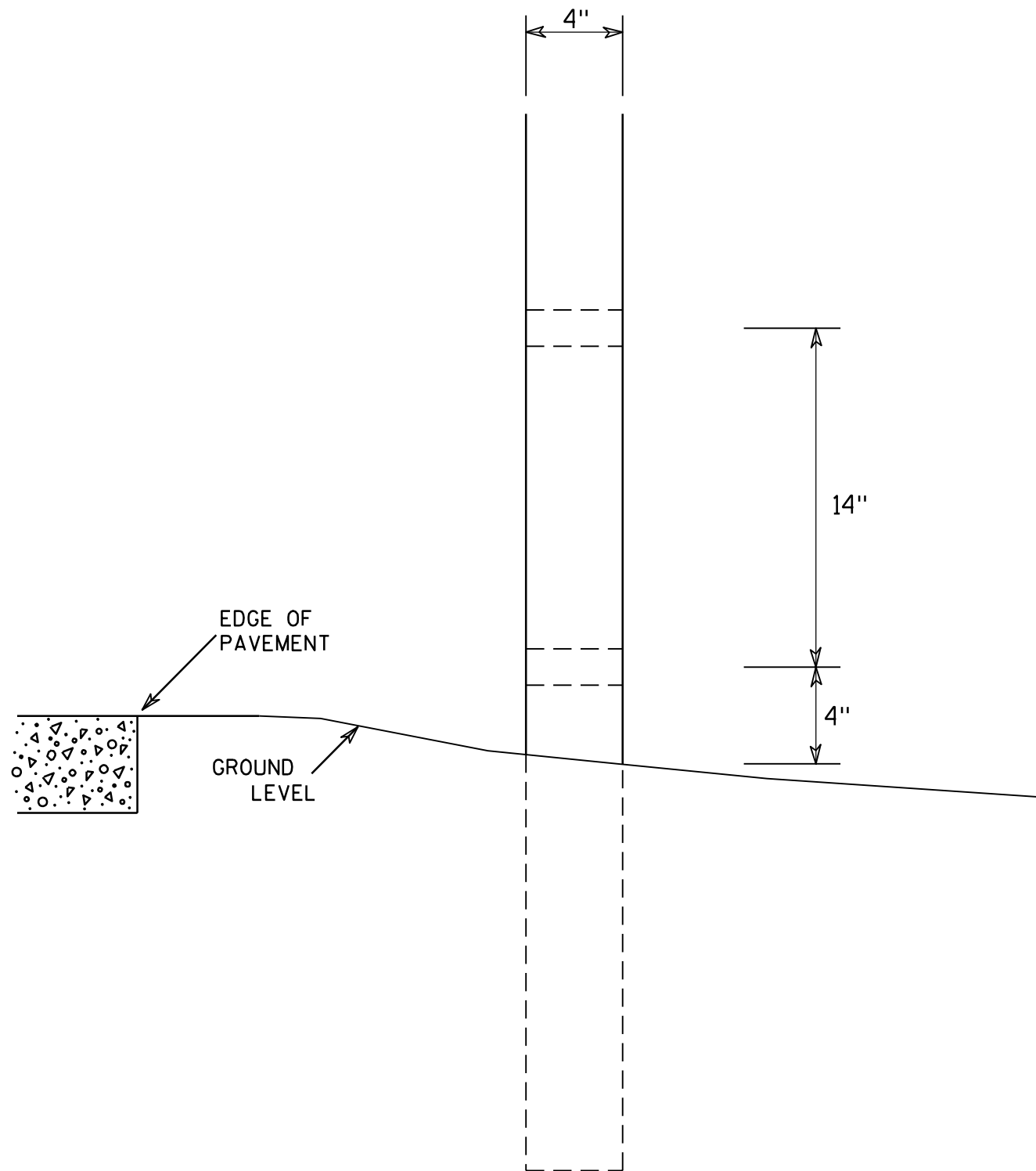
Signs wider than 3 feet or larger than 9 sq. ft shall be mounted on multiple posts (see above table).

**TUBULAR STEEL
SIGN POST
A4-9**

WISCONSIN DEPT OF TRANSPORTATION

APPROVED *Matthew R. Rauch*
for State Traffic Engineer

DATE 2/05/15 PLATE NO. A4-9.9



GENERAL NOTES

1. All 4 x 6 Wood Posts shall be modified by having two 1½" diameter holes drilled perpendicular to the roadway centerline.

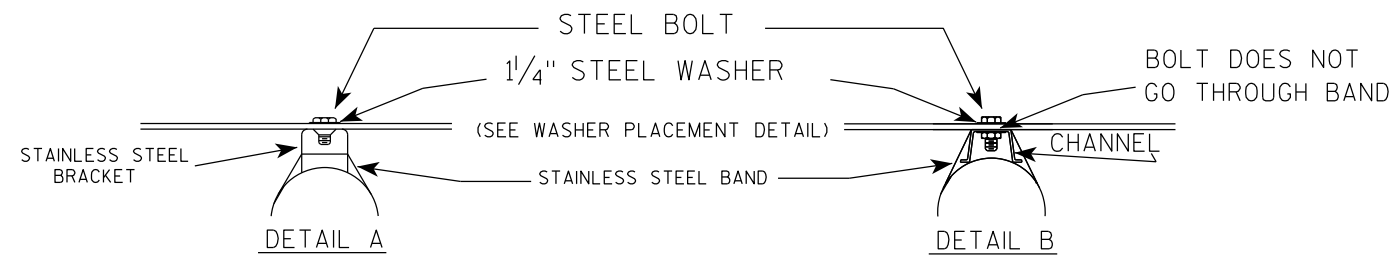
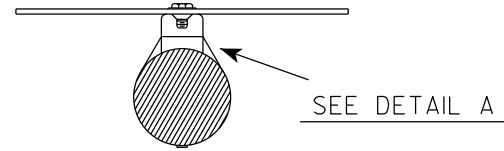
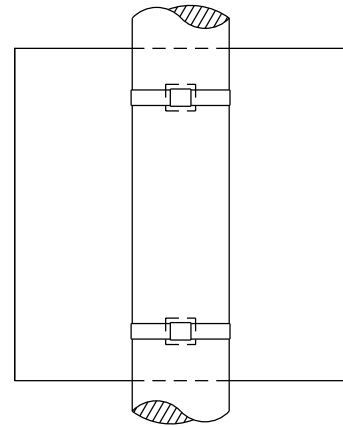
7

7

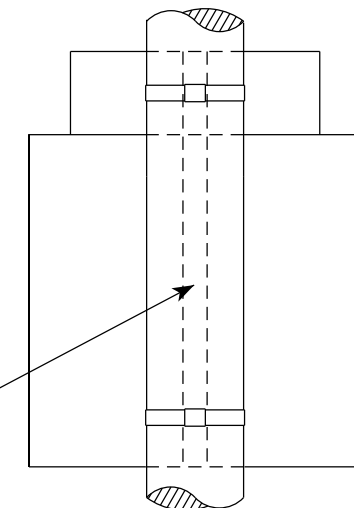
4 X 6 WOOD POST MODIFICATIONS	
<i>WISCONSIN DEPT OF TRANSPORTATION</i>	
APPROVED	<i>Chester J Spang</i> for State Traffic Engineer
DATE <u>3/27/97</u>	PLATE NO. <u>A4-11.2</u>

BANDING

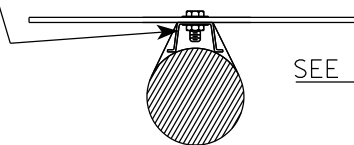
SINGLE SIGN



"J" ASSEMBLY

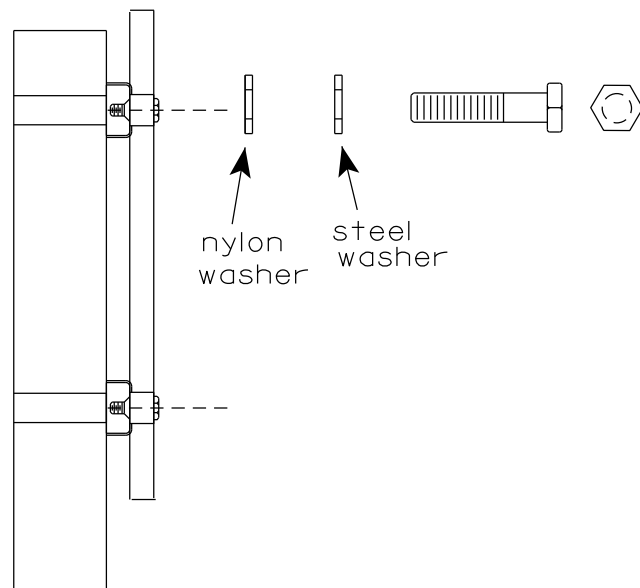


CHANNEL
SEE TYPICAL PANEL
INSTALLATION SHEET



- GENERAL NOTES**
1. Any sign over 3 feet in width shall use the V-Block banding method. See A5-10 standard plate.
 2. Signs 3 feet or greater in height shall have three bracket bands installed. Signs less than 3 feet in height shall have two bracket bands installed.
 3. Banding and assembly bracket shall be stainless steel. All bands shall be $\frac{3}{4}$ " in width and 0.025" thickness.
 4. ALL SIGN MOUNTING BOLTS AND WASHERS SHALL BE EITHER:
 - a. Hot dip or mechanically galvanized in accordance with ASTM Designation: A 153, Class D
 - b. Electro-galvanized in accordance with ASTM designation: B 633, Type III, SC 3

WASHER PLACEMENT



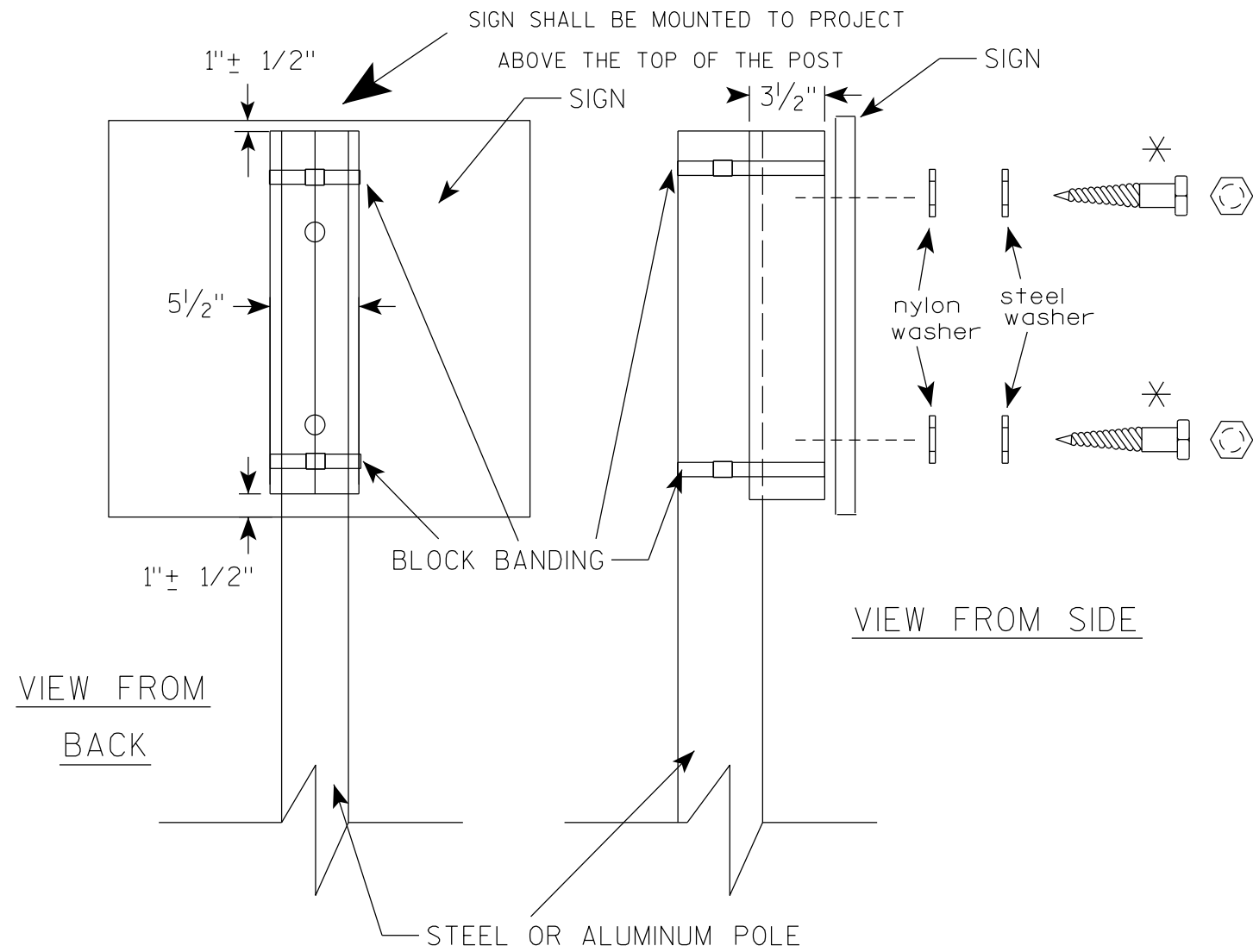
WASHERS (ALL POSTS) -
 1-1/4" O.D. X 3/8" I.D. X 1/16" STEEL
 1-1/4" O.D. X 3/8" I.D. X .080 NYLON
 FOR ALL TYPE H SIGNS

STANDARD SIGN
SIGN BANDING DETAILS

WISCONSIN DEPT OF TRANSPORTATION

APPROVED *Matthew R. Rauch*
for State Traffic Engineer

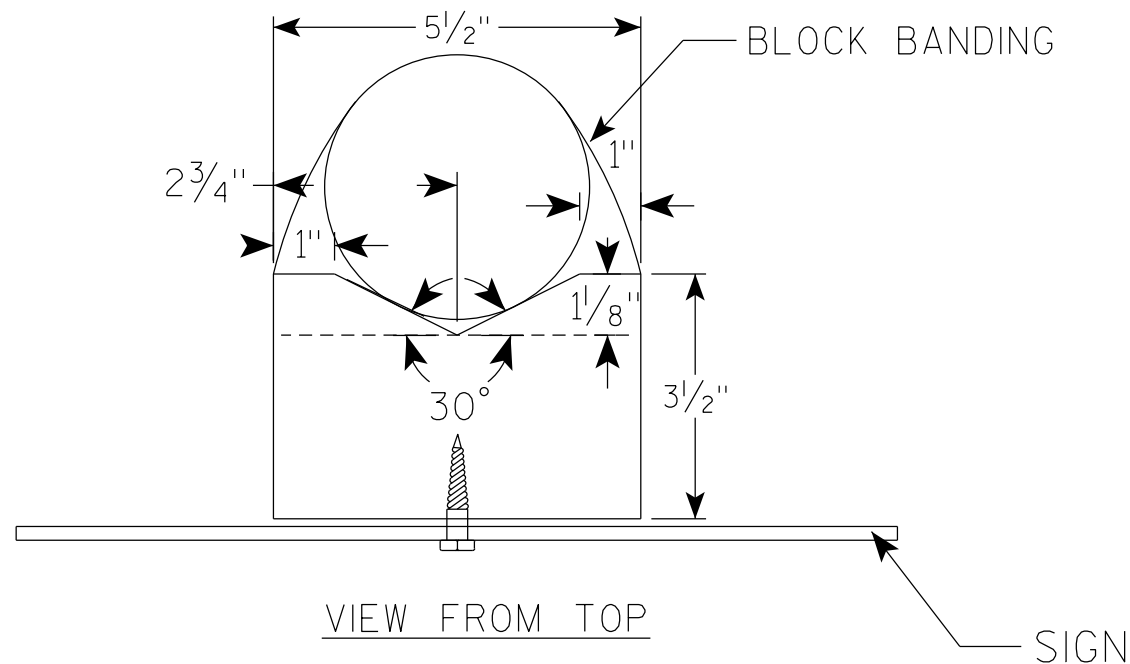
DATE 6/10/19 PLATE NO. A5-9.4



GENERAL NOTES

1. WOOD 4"X6" POST MATERIAL SHALL CONFORM TO 507.2.2 OF THE WISDOT STANDARD SPECIFICATIONS
2. BLOCK BANDING AND CLIPS SHALL BE STAINLESS STEEL, 3/4" WIDTH AND 0.025" THICKNESS
3. SIGNS 3' OR GREATER IN HEIGHT SHALL UTILIZE 3 BLOCK BANDS. SIGNS UNDER 3' IN HEIGHT SHALL UTILIZE 2 BLOCK BANDS
4. ACTUAL NUMBER OF FASTENERS PER SIGN VARIES WITH THE SIGN AREA, BUT NORMALLY THERE ARE TWO. FOR SIGNS GREATER THAN 9 S.F. 3 FASTENERS SHALL BE USED.
5. ALL SIGN MOUNTING BOLTS AND WASHERS SHALL BE EITHER:
 - a. Hot dip or mechanically galvanized in accordance with ASTM Designation: A 153, Class D
 - b. Electro-galvanized in accordance with ASTM Designation : B 633, TYPE III, SC 3
6. ALL BOLTS SHALL HAVE HEXAGONAL HEADS.
7. STEEL WASHERS SHALL BE 1/4" O.D. X 3/8" I.D. X 1/16"
8. NYLON WASHERS SHALL BE 1/4" O.D. X 3/8" I.D. X .080 FOR TYPE H OR TYPE F FACE SIGN

✱ LAG BOLTS SHALL BE 3/8" X 2 1/2"



BLOCK BANDING DETAIL
(V-BLOCK OPTION)

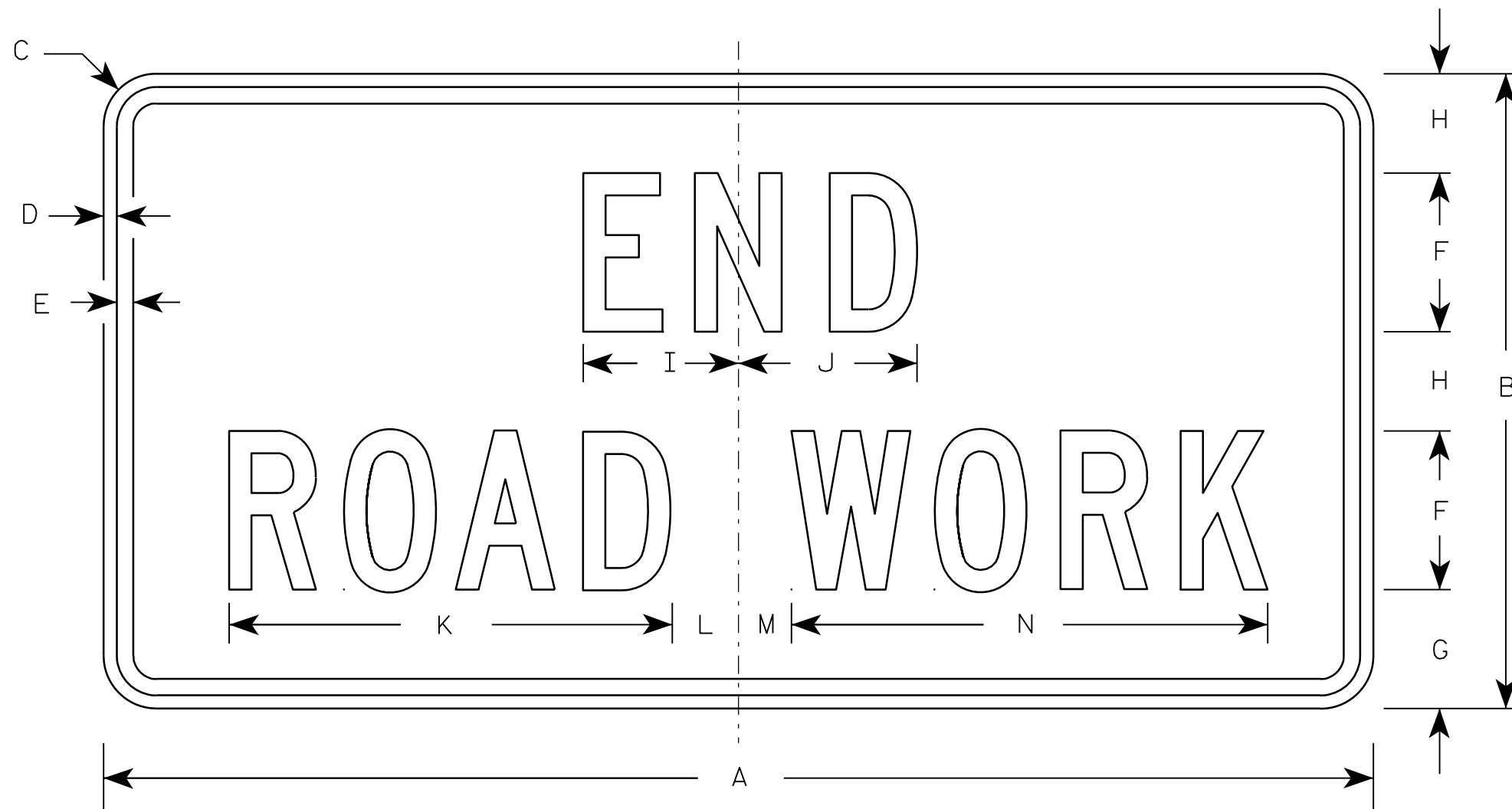
WISCONSIN DEPT OF TRANSPORTATION

APPROVED *Matthew R. Rauch*
for State Traffic Engineer

DATE 4/19/2022 PLATE NO. A5-10.3

NOTES

1. Sign is Type II - Type F Reflective - reference WIS DOT Standard Specification for HIGHWAY and STRUCTURE CONSTRUCTION latest edition.
2. Color:
Background - Orange
Message - Black
3. Message Series - C
4. Corners may be square or rounded when base material is plywood but borders shall be rounded as shown. When base material is metal, the corners and borders shall be rounded.



G20-2A

7

7

Metric equivalent for this sign is:

SIZE	
1	900 mm X 450 mm
2	1200 mm X 600 mm
3	1200 mm X 600 mm
4	1200 mm X 600 mm
5	1200 mm X 600 mm

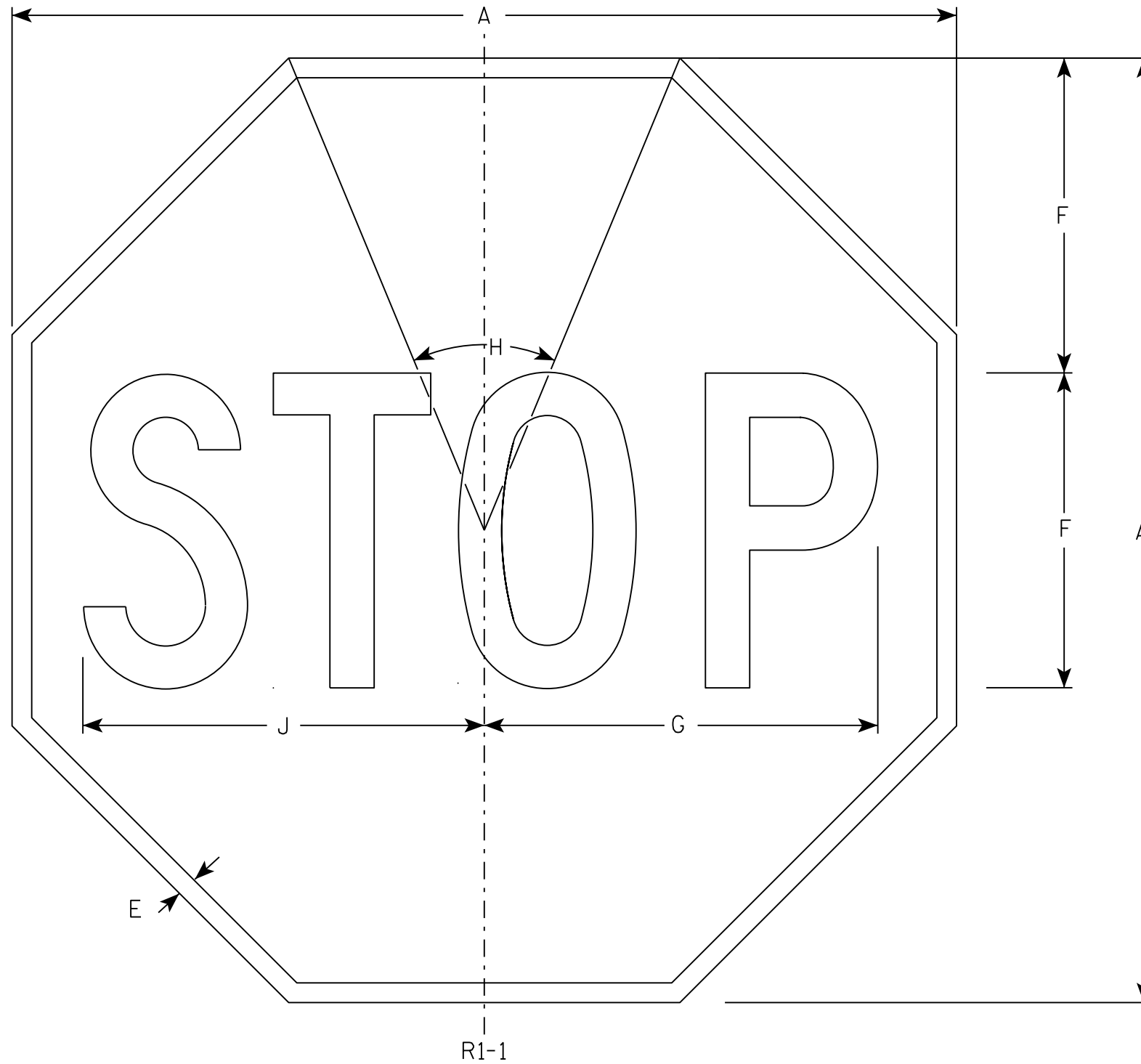
SIZE	A	B	C	D	E	F	G	H	I	J	K	L	M	N	O	P	Q	R	S	T	U	V	W	X	Y	Z	Area sq. ft.	Area sq.
1	36	18	1 1/8	3/8	1/2	4	3 3/4	2 1/2	4 1/8	4 1/8	11 1/8	2	1	12 1/8													4.5	0.41
2	48	24	1 1/2	1/2	5/8	6	4 1/2	3 3/4	5 7/8	6 3/4	16 3/4	2 1/2	1 3/4	18 1/2													8.0	0.72
3	48	24	1 1/2	1/2	5/8	6	4 1/2	3 3/4	5 7/8	6 3/4	16 3/4	2 1/2	1 3/4	18 1/2													8.0	0.72
4	48	24	1 1/2	1/2	5/8	6	4 1/2	3 3/4	5 7/8	6 3/4	16 3/4	2 1/2	1 3/4	18 1/2													8.0	0.72
5	48	24	1 1/2	1/2	5/8	6	4 1/2	3 3/4	5 7/8	6 3/4	16 3/4	2 1/2	1 3/4	18 1/2													8.0	0.72

STANDARD SIGN G20-2A	
WISCONSIN DEPT OF TRANSPORTATION	
APPROVED	<i>Matthew R. Rauch</i> For State Traffic Engineer
DATE 9/30/09	PLATE NO. G20-2A.8

PROJECT NO:	HWY:	COUNTY:	SHEET NO:	E
-------------	------	---------	-----------	----------

NOTES

1. Sign is Type II - Type H Reflective - reference WIS DOT Standard Specification for HIGHWAY and STRUCTURE CONSTRUCTION latest edition.
2. Color:
Background - Red
Message - White
3. Message Series - C



7

7

SIZE	A	B	C	D	E	F	G	H	I	J	K	L	M	N	O	P	Q	R	S	T	U	V	W	X	Y	Z	Area sq. ft.
1	30				5/8	10	12 1/2	45°		12 3/4																	5.18
2S	30				5/8	10	12 1/2	45°		12 3/4																	5.18
2M	36				3/4	12	15	45°		15 3/8																	7.46
3	36				3/4	12	15	45°		15 3/8																	7.46
4	48				1	16	20	45°		20 1/2																	13.25
5	48				1	16	20	45°		20 1/2																	13.25
6	18				3/8	6	7 3/4	45°		7 3/4																	1.86
7	12				1/4	4	5	45°		5 1/8																	0.78

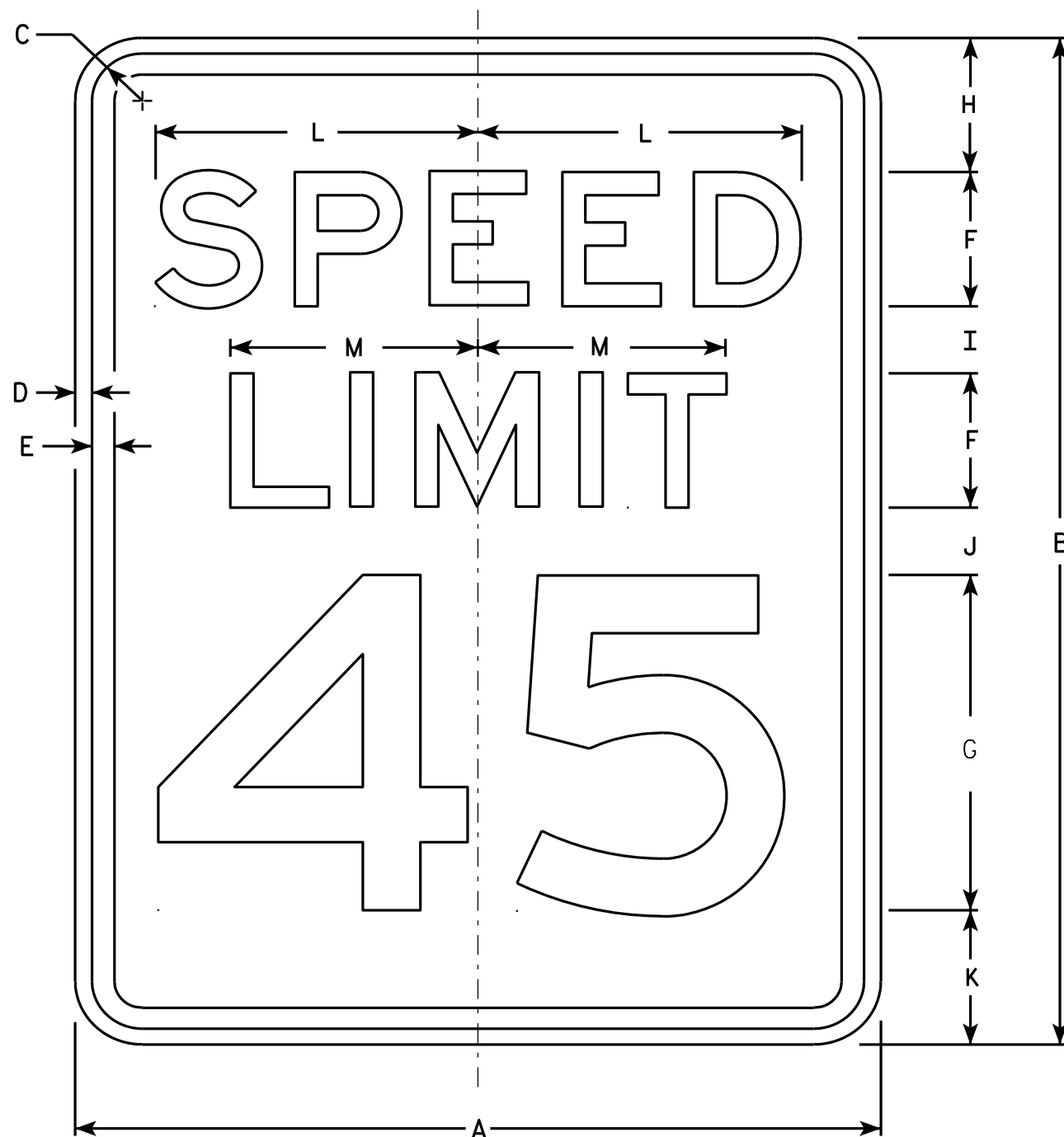
PROJECT NO: _____ HWY: _____ COUNTY: _____ SHEET NO: _____ **E**

STANDARD SIGN
R1-1

WISCONSIN DEPT OF TRANSPORTATION

APPROVED *Matthew R. Rauch*
for State Traffic Engineer

DATE 11/12/15 PLATE NO. R1-1.13



R2-1

NOTES

1. Sign is Type II - Type H Reflective - reference WIS DOT Standard Specification for HIGHWAY and STRUCTURE CONSTRUCTION latest edition.
2. Color:
Background - White
Message - Black
3. Message Series - E
4. Corners may be square or rounded when base material is plywood but borders shall be rounded as shown. When base material is metal, the corners and borders shall be rounded.
5. Substitute appropriate numerals and optically adjust spacing to achieve proper balance.

7

7

SIZE	A	B	C	D	E	F	G	H	I	J	K	L	M	N	O	P	Q	R	S	T	U	V	W	X	Y	Z	Area sq. ft.
1	18	24	1 1/8	3/8	1/2	3	8	3	2	2	3	7 1/4	5 1/2														3.0
2S	24	30	1 1/8	3/8	1/2	4	10	3	2 1/4	3 3/8	3 3/8	9 5/8	7 3/8														5.0
2M	30	36	1 3/8	1/2	5/8	5	12	5	2 1/2	2 1/2	4	12	9 1/4														7.5
3	36	48	1 3/8	1/2	5/8	6	14	6	5	5	6	14 3/8	11														12.0
4	36	48	1 3/8	1/2	5/8	6	14	6	5	5	6	14 3/8	11														12.0
5	48	60	2 1/4	3/4	1	8	20	6	4 1/2	6 3/4	6 3/4	19 1/4	14 5/8														20.0

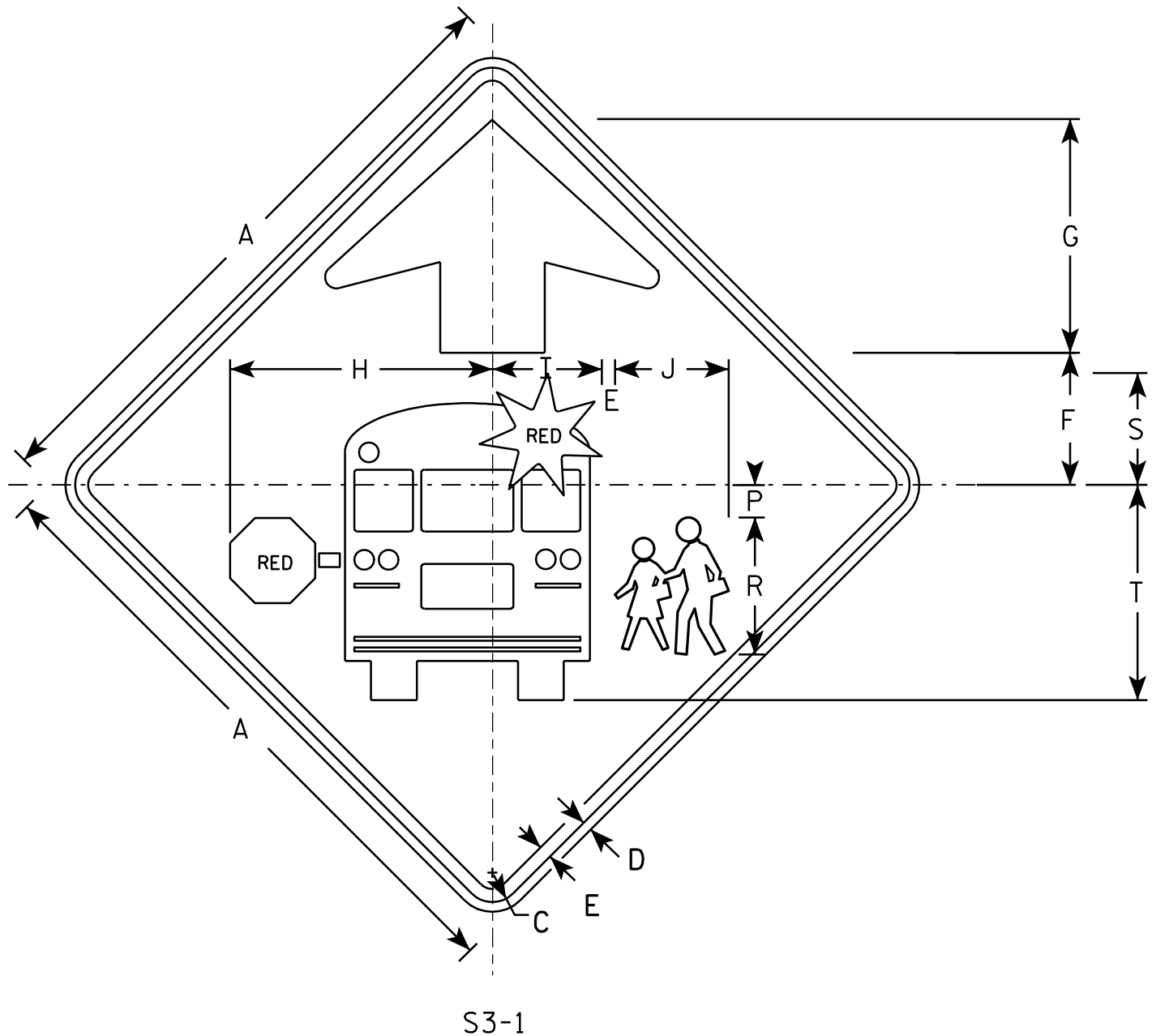
STANDARD SIGN
R2-1

WISCONSIN DEPT OF TRANSPORTATION

APPROVED *Matthew R. Rauch*
For State Traffic Engineer

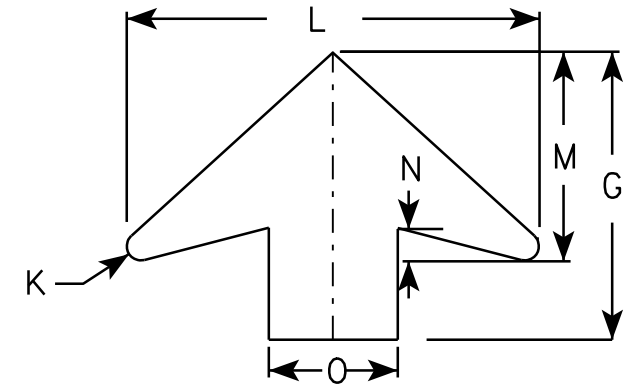
DATE 5/26/10 PLATE NO. R2-1.13

PROJECT NO: _____ HWY: _____ COUNTY: _____ SHEET NO: _____ E



NOTES

1. All Signs Type II - Type F Reflective - reference WIS DOT Standard Specification for HIGHWAY and STRUCTURE CONSTRUCTION latest edition.
2. Color:
 Background - YELLOW-GREEN
 Message - BLACK except as noted
 Circles except PEDS- RED BACKGROUND
3. Corners may be square or rounded when base material is plywood but borders shall be rounded as shown. When base material is metal, the corners and borders shall be rounded.



ARROW DETAIL

7

7

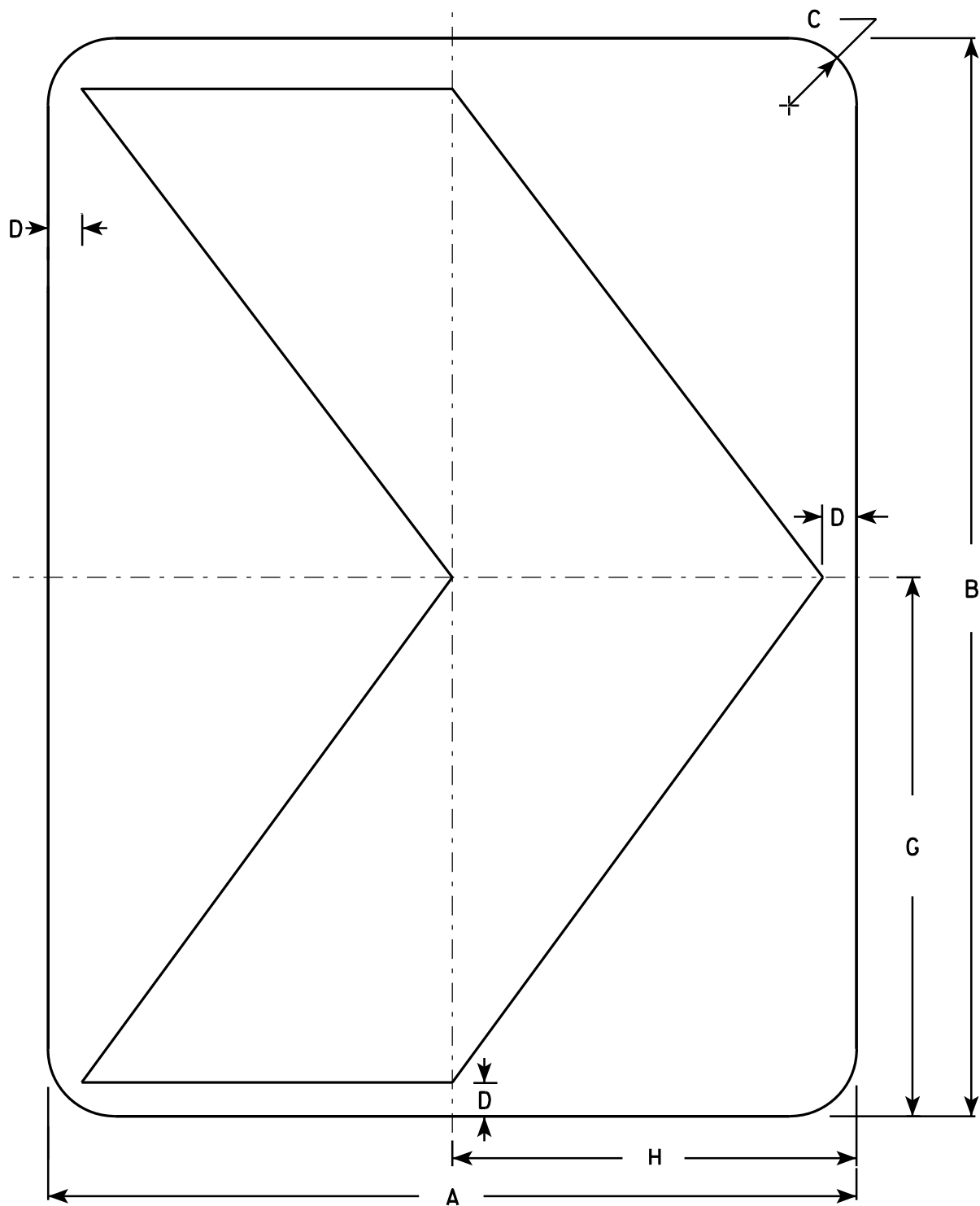
SIZE	A	B	C	D	E	F	G	H	I	J	K	L	M	N	O	P	Q	R	S	T	U	V	W	X	Y	Z	Area sq. ft.
1	30		1 3/8	1/2	5/8	6 1/4	11 1/4	12 1/2	5 1/4	5 1/2	1/2	16	8	1 1/4	5	1 1/2		6 5/8	5 3/8	10 3/8							6.25
2	36		1 5/8	5/8	3/4	7 1/2	13 1/2	15 1/8	6 1/4	6 1/2	5/8	19 1/4	9 3/4	1 5/8	6	1 7/8		7 1/8	6 3/8	12 3/8							9.0
3	48		2 1/4	3/4	1	10	17 7/8	20 1/8	8 3/8	8 3/4	7/8	25 5/8	13	2	8	2 1/2		10 1/2	8 1/2	16 1/2							16.0
4	48		2 1/4	3/4	1	10	17 7/8	20 1/8	8 3/8	8 3/4	7/8	25 5/8	13	2	8	2 1/2		10 1/2	8 1/2	16 1/2							16.0
5																											

STANDARD SIGN
S3-1

WISCONSIN DEPT OF TRANSPORTATION

APPROVED *Matthew R. Rauch*
for State Traffic Engineer

DATE 6/8/10 PLATE NO. S3-1.6



NOTES

1. Sign is Type II - Type F Reflective - reference WIS DOT Standard Specification for HIGHWAY and STRUCTURE CONSTRUCTION latest edition.
2. Color:
Background - Yellow
Message - Black
3. Corners may be square or rounded when base material is plywood but borders shall be rounded as shown. When base material is metal, the corners and borders shall be rounded.

7

7

W1-8

SIZE	A	B	C	D	E	F	G	H	I	J	K	L	M	N	O	P	Q	R	S	T	U	V	W	X	Y	Z	Area sq. ft.
1	12	18	1 1/2	1/2			9	6																			1.5
2S	18	24	1 1/2	3/4			12	9																			3.0
2M	18	24	1 1/2	3/4			12	9																			3.0
3	24	30	1 1/2	1			15	12																			5.0
4	30	36	1 7/8	1 1/4			18	15																			7.5
5	36	48	2 1/4	1 1/2			24	18																			12.0

STANDARD SIGN
W1-8

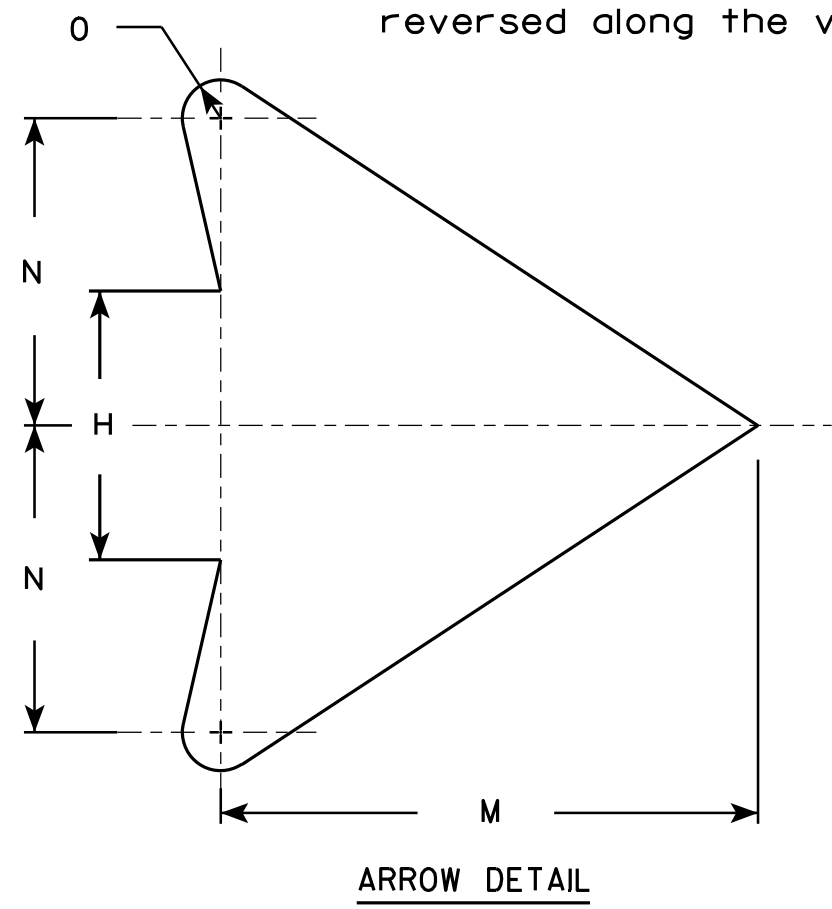
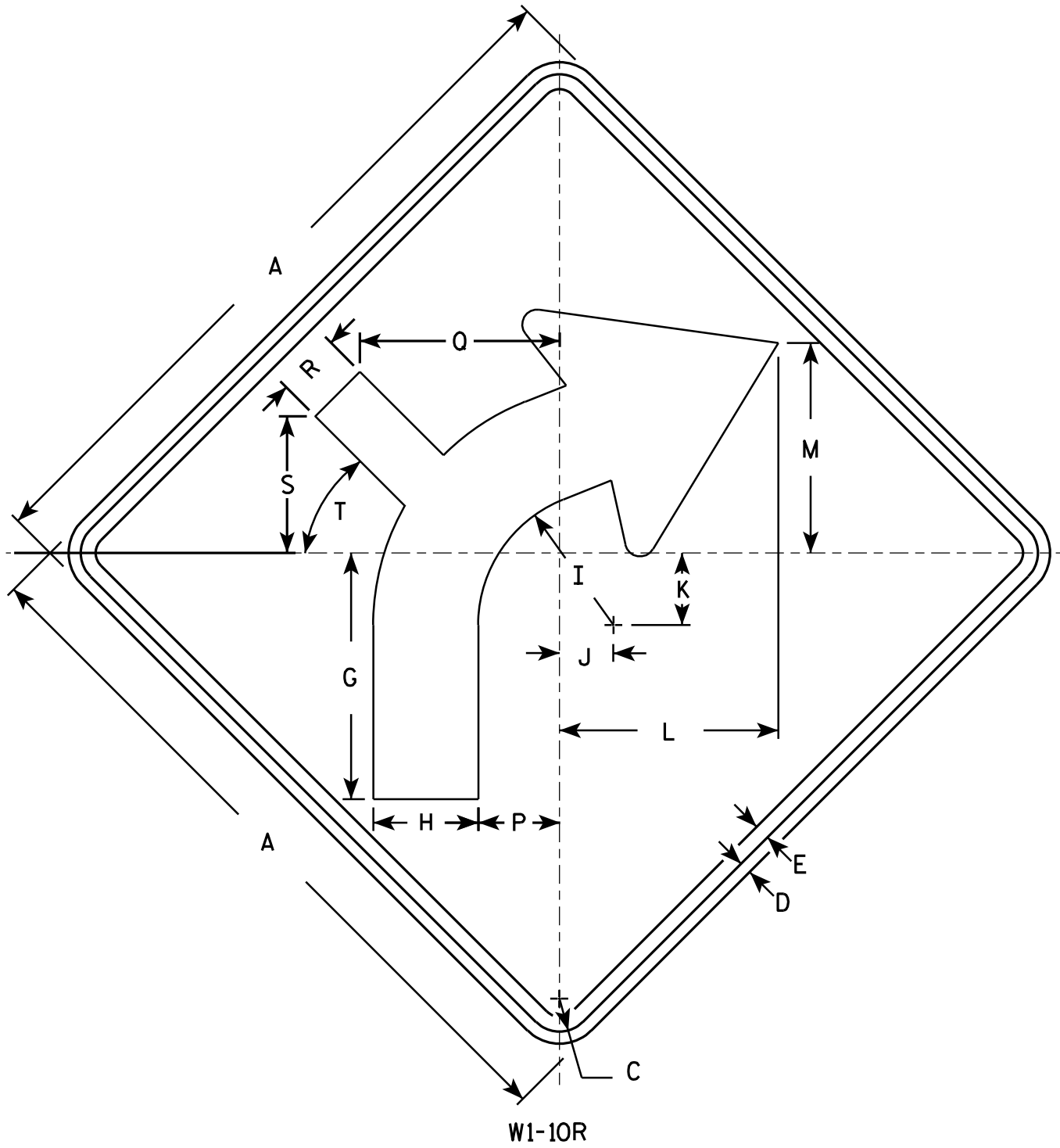
WISCONSIN DEPT OF TRANSPORTATION

APPROVED *Matthew R. Rauch*
for State Traffic Engineer

DATE 6/7/10 PLATE NO. W1-8.6

NOTES

1. Sign is Type II - Type F Reflective - reference WIS DOT Standard Specification for HIGHWAY and STRUCTURE CONSTRUCTION latest edition.
2. Color:
Background - Yellow
Message - Black
3. Corners may be square or rounded when base material is plywood but borders shall be rounded as shown. When base material is metal, the corners and borders shall be rounded.
4. W1-10L is the same as W1-10R except the arrow is reversed along the vertical centerline.



7

7

SIZE	A	B	C	D	E	F	G	H	I	J	K	L	M	N	O	P	Q	R	S	T	U	V	W	X	Y	Z	Area sq. ft.
1	24		1 1/8	3/8	1/2		8 1/4	3 1/2	4 1/2	1 3/4	2 3/8	7 1/4	7	4	1/2	2 5/8	6 5/8	2 1/8	4 1/2	45°							4.0
2S	30		1 3/8	1/2	5/8		10 1/4	4 3/8	5 5/8	2 1/4	3	9 1/8	8 3/4	5	5/8	3 3/8	8 3/8	2 5/8	5 3/4	45°							6.25
2M	36		1 5/8	5/8	3/4		12 3/8	5 1/4	6 3/4	2 5/8	3 1/2	10 7/8	10 1/2	6	3/4	4	10	3 1/4	6 7/8	45°							9.0
3	36		1 5/8	5/8	3/4		12 3/8	5 1/4	6 3/4	2 5/8	3 1/2	10 7/8	10 1/2	6	3/4	4	10	3 1/4	6 7/8	45°							9.0
4	36		1 5/8	5/8	3/4		12 3/8	5 1/4	6 3/4	2 5/8	3 1/2	10 7/8	10 1/2	6	3/4	4	10	3 1/4	6 7/8	45°							9.0
5	48		2 1/4	3/4	1		16 1/2	7	9	3 1/2	4 5/8	14 1/2	14	8	1	5 3/8	13 1/4	4 1/4	9 1/8	45°							16.0

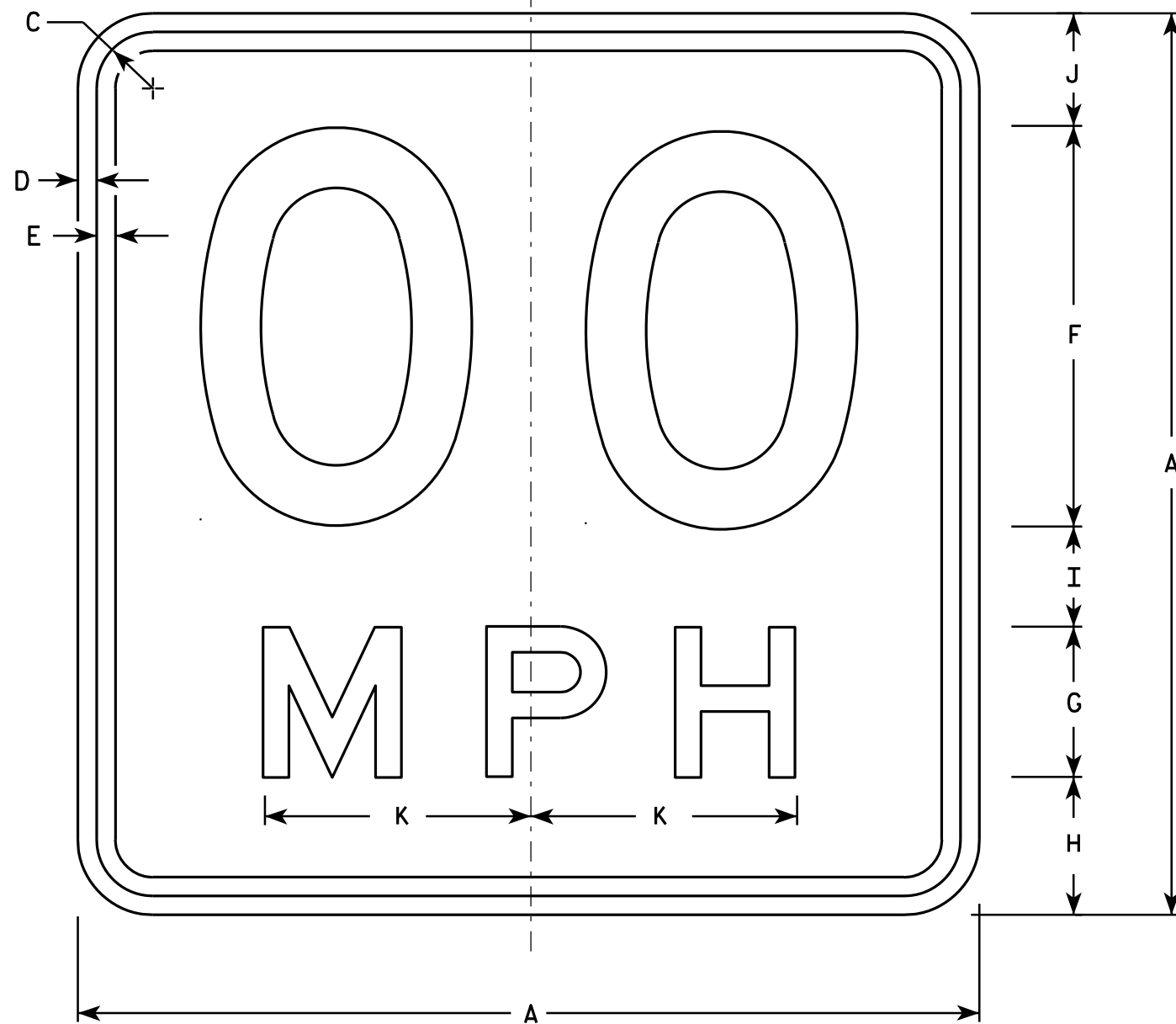
STANDARD SIGN
W1-10

WISCONSIN DEPT OF TRANSPORTATION

APPROVED *Matthew R. Rauch*
for State Traffic Engineer

DATE 5/17/12 PLATE NO. W1-10.3

PROJECT NO: _____ HWY: _____ COUNTY: _____ SHEET NO: **E**



NOTES

1. Sign is Type II - Type F Reflective - reference WIS DOT Standard Specification for HIGHWAY and STRUCTURE CONSTRUCTION latest edition.
2. Color:
Background - Yellow
Message - Black
3. Message Series - See Note 6
4. Corners may be square or rounded when base material is plywood but borders shall be rounded as shown. When base material is metal, the corners and borders shall be rounded.
5. Substitute appropriate numerals and optically space about centerline to achieve proper balance.
6. Line 1 is Series D
Line 2 is Series E

W13-1

* For 30" x 30" Warning Signs, use 18" x 18" W13-1 signs.
For 36" x 36" Warning Signs, use 24" x 24" W13-1 signs.

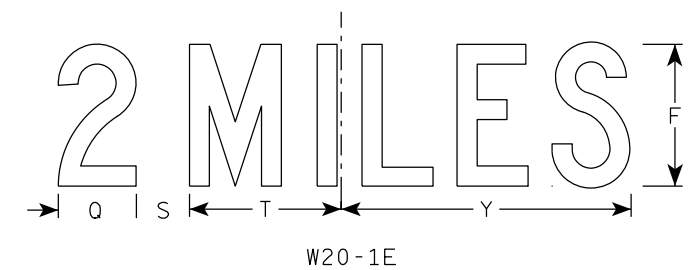
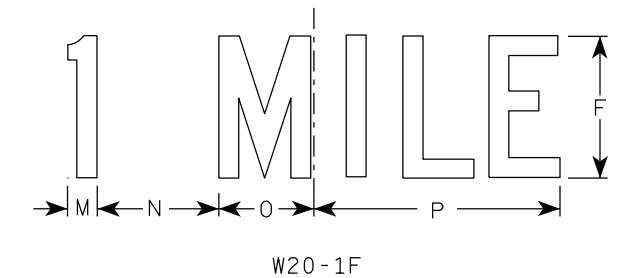
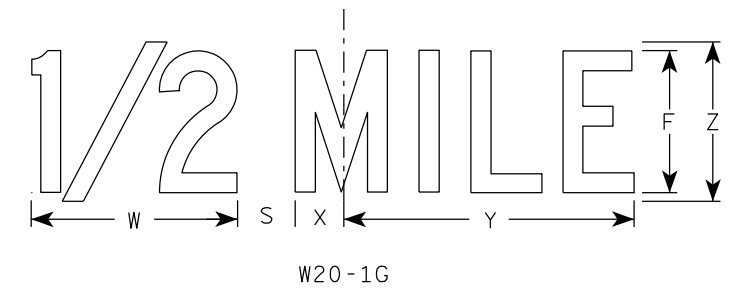
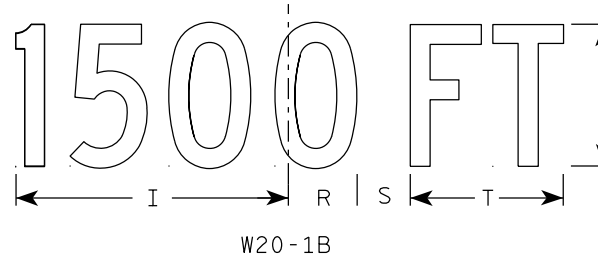
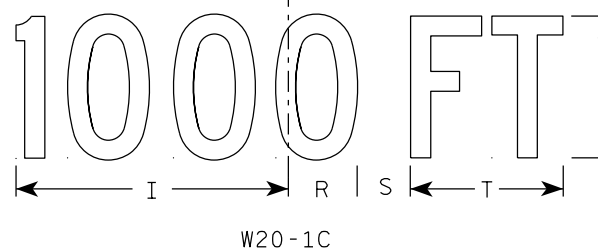
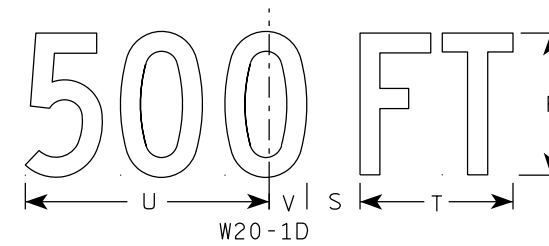
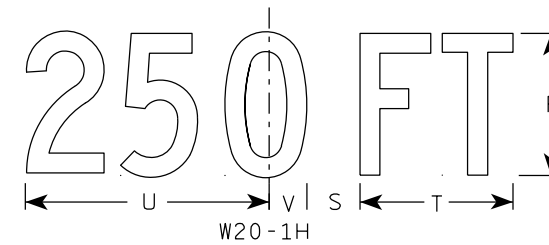
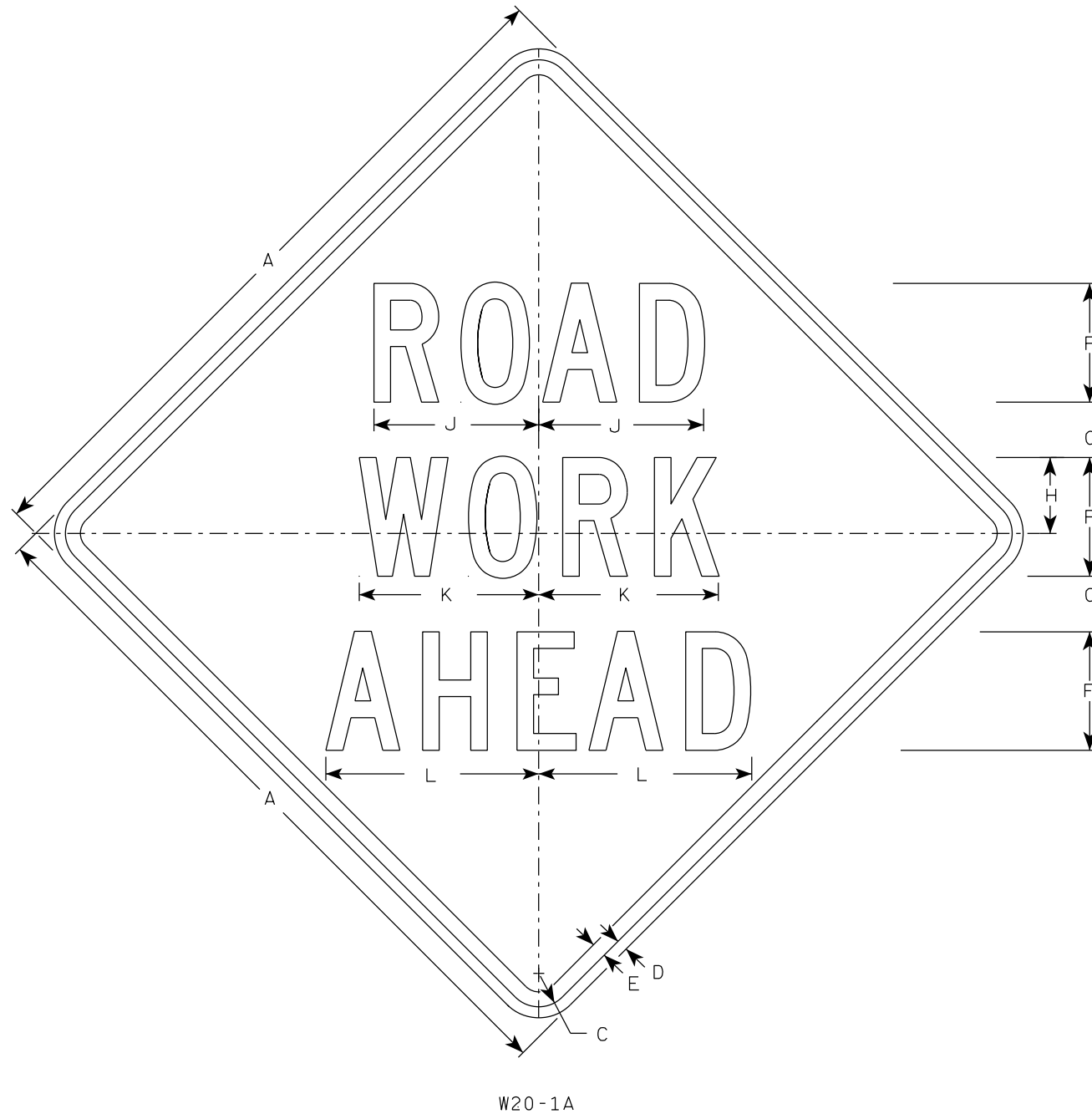
SIZE	A	B	C	D	E	F	G	H	I	J	K	L	M	N	O	P	Q	R	S	T	U	V	W	X	Y	Z	Area sq. ft.
1	18		1 1/8	3/8	3/8	8	3	2 3/4	2	2 1/4	5 3/8																2.25
* 2S	18		1 1/8	3/8	3/8	8	3	2 3/4	2	2 1/4	5 3/8																2.25
* 2M	18		1 1/8	3/8	3/8	8	3	2 3/4	2	2 1/4	5 3/8																2.25
3	24		1 1/8	3/8	1/2	10	4	4	2 3/4	3 1/4	6 5/8																4.00
4	36		1 5/8	5/8	3/4	16	6	5 1/2	4	4 1/2	10 5/8																9.00
5	36		1 5/8	5/8	3/4	16	6	5 1/2	4	4 1/2	10 5/8																9.00

STANDARD SIGN
W13-1

WISCONSIN DEPT OF TRANSPORTATION
APPROVED *Matthew R. Rauch*
For State Traffic Engineer
DATE 5/31/12 PLATE NO. W13-1.16

NOTES

1. Sign is Type II - Type F Reflective
2. Color:
Background - Orange
Message - Black
3. Message Series - C
4. Corners may be square or rounded when base material is plywood but borders shall be rounded as shown. When base material is metal, the corners and borders shall be rounded.



SIZE	A	B	C	D	E	F	G	H	I	J	K	L	M	N	O	P	Q	R	S	T	U	V	W	X	Y	Z	Area sq. ft.
1	36		1 5/8	5/8	3/4	5	2 5/8	3 1/4	10 1/8	7	7 5/8	8 7/8	1 1/8	4 1/2	3 1/2	9	3 1/4	2 1/2	2 1/4	5 5/8	9	1 3/8	8	1 3/4	10 3/4	6	9.0
2S	48		2 1/4	3/4	1	8	3 3/4	5 1/8	15 3/8	11 1/8	12 1/8	14 3/8	1 5/8	6 7/8	5 3/8	13 7/8	4 3/8	3 7/8	3	8 5/8	13 3/4	2 1/8	11 7/8	2 3/4	16 3/8	9	16.0
2M	48		2 1/4	3/4	1	8	3 3/4	5 1/8	15 3/8	11 1/8	12 1/8	14 3/8	1 5/8	6 7/8	5 3/8	13 7/8	4 3/8	3 7/8	3	8 5/8	13 3/4	2 1/8	11 7/8	2 3/4	16 3/8	9	16.0
3	48		2 1/4	3/4	1	8	3 3/4	5 1/8	15 3/8	11 1/8	12 1/8	14 3/8	1 5/8	6 7/8	5 3/8	13 7/8	4 3/8	3 7/8	3	8 5/8	13 3/4	2 1/8	11 7/8	2 3/4	16 3/8	9	16.0
4	48		2 1/4	3/4	1	8	3 3/4	5 1/8	15 3/8	11 1/8	12 1/8	14 3/8	1 5/8	6 7/8	5 3/8	13 7/8	4 3/8	3 7/8	3	8 5/8	13 3/4	2 1/8	11 7/8	2 3/4	16 3/8	9	16.0
5	48		2 1/4	3/4	1	8	3 3/4	5 1/8	15 3/8	11 1/8	12 1/8	14 3/8	1 5/8	6 7/8	5 3/8	13 7/8	4 3/8	3 7/8	3	8 5/8	13 3/4	2 1/8	11 7/8	2 3/4	16 3/8	9	16.0

STANDARD SIGN
W20-1A, B, C, D, E, F, G & H

WISCONSIN DEPT OF TRANSPORTATION

APPROVED *Matthew R. Rauch*
For State Traffic Engineer

DATE 3/25/2020 PLATE NO. W20-1.11

Notes



Wisconsin Department of Transportation

Dedicated people creating transportation solutions through innovation and exceptional service.

<http://www.dot.wisconsin.gov>