



Wisconsin Department of Transportation

December 7, 2023

Division of Transportation Systems Development

Bureau of Project Development
4822 Madison Yards Way, 4th Floor South
Madison, WI 53705

Telephone: (608) 266-1631
Facsimile (FAX): (608) 266-8459

NOTICE TO ALL CONTRACTORS:

Proposal #13: 7930-08-71, WISC 2024062
West Salem – La Crosse
Old 16 Road to North County Line
STH 108
La Crosse County

Letting of December 12, 2023

This is Addendum No. 02, which provides for the following:

Schedule of Items:

Revised Bid Item Quantities					
Bid Item	Item Description	Unit	Proposal Total Prior to Addendum	Proposal Quantity Change (-)	Proposal Total After Addendum
205.0100	Excavation Common	CY	217	20	237
520.3524	Culvert Pipe Class III-B 24-Inch	LF	62	-12	50

Added Bid Item Quantities					
Bid Item	Item Description	Unit	Proposal Total Prior to Addendum	Quantity Added	Proposal Total After Addendum
522.0424	Culvert Pipe Reinforced Concrete Class IV 24-Inch	LF	0	62	62
646.2040	Marking Line Grooved Wet Reflective Epoxy 6-Inch	LF	0	147,926	147,926

Deleted Bid Item Quantities					
Bid Item	Item Description	Unit	Proposal Total Prior to Addendum	Proposal Quantity Change (-)	Proposal Total After Addendum
522.0124	Culvert Pipe Reinforced Concrete Class III 24-Inch	LF	50	-50	0
646.2020	Marking Line Epoxy 6-Inch	LF	147,926	-147,926	0

Plan Sheets:

Revised Plan Sheets	
Plan Sheet	Plan Sheet Title (brief description of changes to sheet)
12	Revised culvert label to Culvert Pipe Class III-B 24-Inch
14	Revised culvert label to Culvert Pipe Reinforced Concrete Class IV 24-Inch
23	Revised culvert label to Storm Sewer Reinforced Concrete Class IV 18-Inch
58	Revised Culvert Pipe Class III-B 24-Inch quantity, removed Culvert Pipe Reinforced Concrete Class III 24-Inch item, added Culvert Pipe Reinforced Concrete Class IV 24-Inch item, revised earthwork summary
59	Revised items and quantities to be used for estimate Barrier System Grading Shaping Finishing item
60	Added item 646.2040 Marking Line Grooved Wet Ref Epoxy 6-Inch, removed item 646.2020 Marking Line Epoxy 6-Inch
61	Added item 646.2040 Marking Line Grooved Wet Ref Epoxy 6-Inch, removed item 646.2020 Marking Line Epoxy 6-Inch

Schedule of Items

Attached, dated December 7, 2023, are the revised Schedule of Items Pages 1 – 7.

Plan Sheets

The following 8½ x 11-inch sheets are attached and made part of the plans for this proposal:
Revised: 12, 14, 23, and 58 - 61.

The responsibility for notifying potential subcontractors and suppliers of these changes remains with the prime contractor.

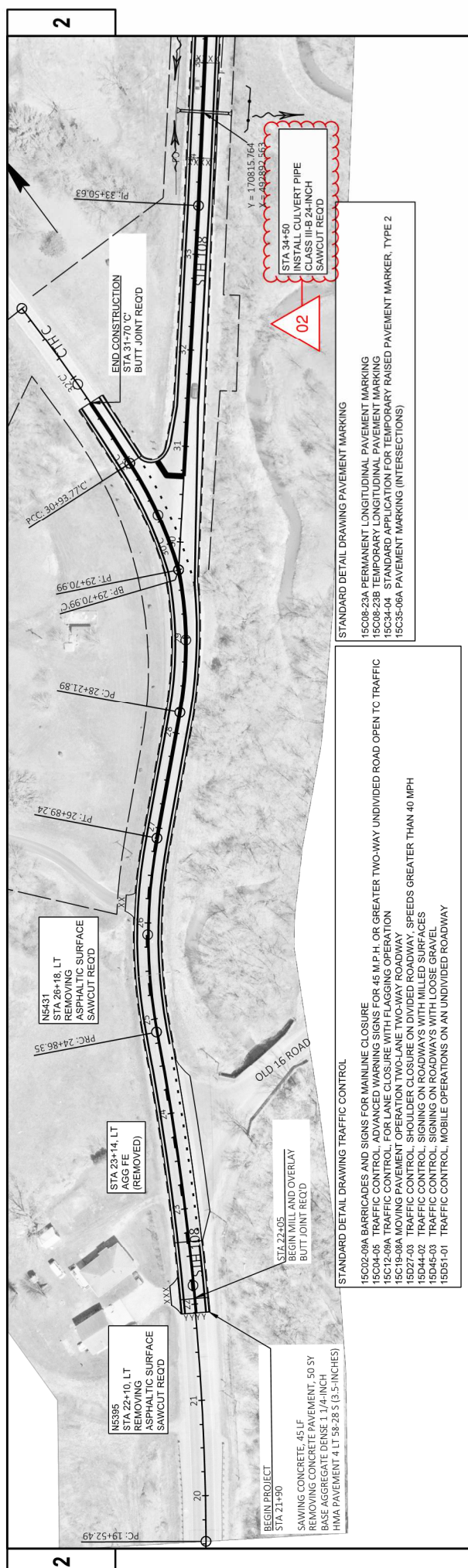
Sincerely,

Mike Coleman

Proposal Development Specialist
Proposal Management Section

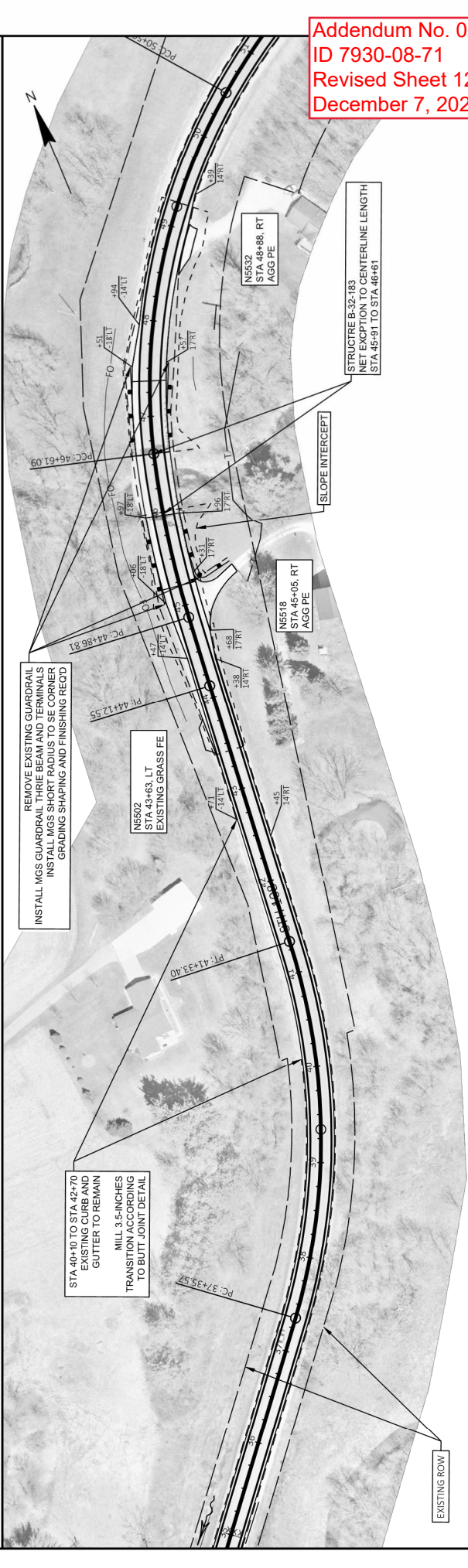
END OF ADDENDUM

Addendum No. 02
 ID 7930-08-71
 Revised Sheet 12
 December 7, 2023



STANDARD DETAIL DRAWING PAVEMENT MARKING
 15C08-23A PERMANENT LONGITUDINAL PAVEMENT MARKING
 15C34-23B STANDARD APPLICATION FOR TEMPORARY RAISED PAVEMENT MARKER, TYPE 2
 15C35-06A PAVEMENT MARKING (INTERSECTIONS)

STANDARD DETAIL DRAWING TRAFFIC CONTROL
 15D02-08A BARRICADES AND SIGNS FOR MAINLINE CLOSURE
 15D02-08B TRAFFIC CONTROL FOR LANE CLOSURE WITH FLAGGING OPERATION
 15C19-08A TRAFFIC CONTROL FOR LANE CLOSURE WITH FLAGGING OPERATION
 15C19-08B MOVING CONTROL OPERATION TWO-LANE TWO-WAY ROADWAY
 15D27-03 TRAFFIC CONTROL SHOULDER CLOSURE ON DIVIDED ROADWAY, SPEEDS GREATER THAN 40 MPH
 15D44-02 TRAFFIC CONTROL SIGNING ON ROADWAYS WITH MILLED SURFACES
 15D45-03 TRAFFIC CONTROL SIGNING ON ROADWAYS WITH LOOSE GRAVEL
 15D51-01 TRAFFIC CONTROL, MOBILE OPERATIONS ON AN UNDIVIDED ROADWAY

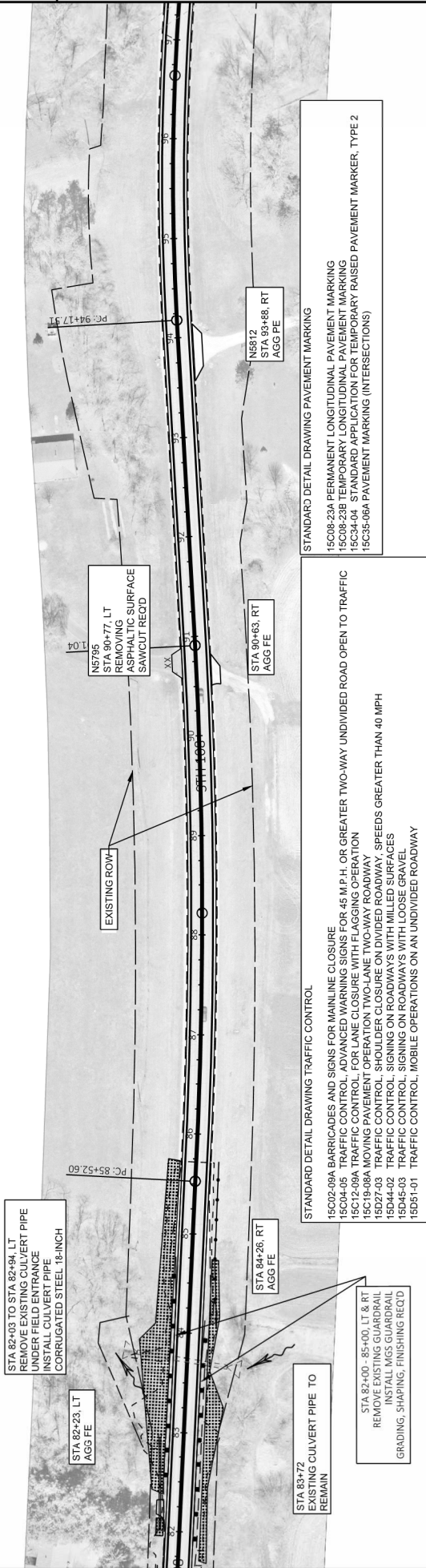


STANDARD DETAIL DRAWING TRAFFIC CONTROL
 15D02-08A BARRICADES AND SIGNS FOR MAINLINE CLOSURE
 15D02-08B TRAFFIC CONTROL FOR LANE CLOSURE WITH FLAGGING OPERATION
 15C19-08A TRAFFIC CONTROL FOR LANE CLOSURE WITH FLAGGING OPERATION
 15C19-08B MOVING CONTROL OPERATION TWO-LANE TWO-WAY ROADWAY
 15D27-03 TRAFFIC CONTROL SHOULDER CLOSURE ON DIVIDED ROADWAY, SPEEDS GREATER THAN 40 MPH
 15D44-02 TRAFFIC CONTROL SIGNING ON ROADWAYS WITH MILLED SURFACES
 15D45-03 TRAFFIC CONTROL SIGNING ON ROADWAYS WITH LOOSE GRAVEL
 15D51-01 TRAFFIC CONTROL, MOBILE OPERATIONS ON AN UNDIVIDED ROADWAY

STANDARD DETAIL DRAWING TRAFFIC CONTROL
 15D02-08A BARRICADES AND SIGNS FOR MAINLINE CLOSURE
 15D02-08B TRAFFIC CONTROL FOR LANE CLOSURE WITH FLAGGING OPERATION
 15C19-08A TRAFFIC CONTROL FOR LANE CLOSURE WITH FLAGGING OPERATION
 15C19-08B MOVING CONTROL OPERATION TWO-LANE TWO-WAY ROADWAY
 15D27-03 TRAFFIC CONTROL SHOULDER CLOSURE ON DIVIDED ROADWAY, SPEEDS GREATER THAN 40 MPH
 15D44-02 TRAFFIC CONTROL SIGNING ON ROADWAYS WITH MILLED SURFACES
 15D45-03 TRAFFIC CONTROL SIGNING ON ROADWAYS WITH LOOSE GRAVEL
 15D51-01 TRAFFIC CONTROL, MOBILE OPERATIONS ON AN UNDIVIDED ROADWAY

PROJECT NO: 7930-08-71
 HWY: STH 108
 COUNTY: LA CROSSE
 PLAN DETAILS
 PLOT NAME: PETERSON, SHANE J
 PLOT DATE: 12/5/2023 1:22 PM
 PLOT SCALE: 1 IN=100 FT
 SHEET 12

FILE NAME: N:\PDS\320\79300801\SHETS\PLAN\021201-PD.DWG
 LAYOUT NAME: 020201.plt



STANDARD DETAIL DRAWING PAVEMENT MARKING

15C08-23A PERMANENT LONGITUDINAL PAVEMENT MARKING
 15C08-23B TEMPORARY LONGITUDINAL PAVEMENT MARKING
 15C34-04 STANDARD APPLICATION FOR TEMPORARILY RAISED PAVEMENT MARKER, TYPE 2
 15C35-06A PAVEMENT MARKING (INTERSECTIONS)

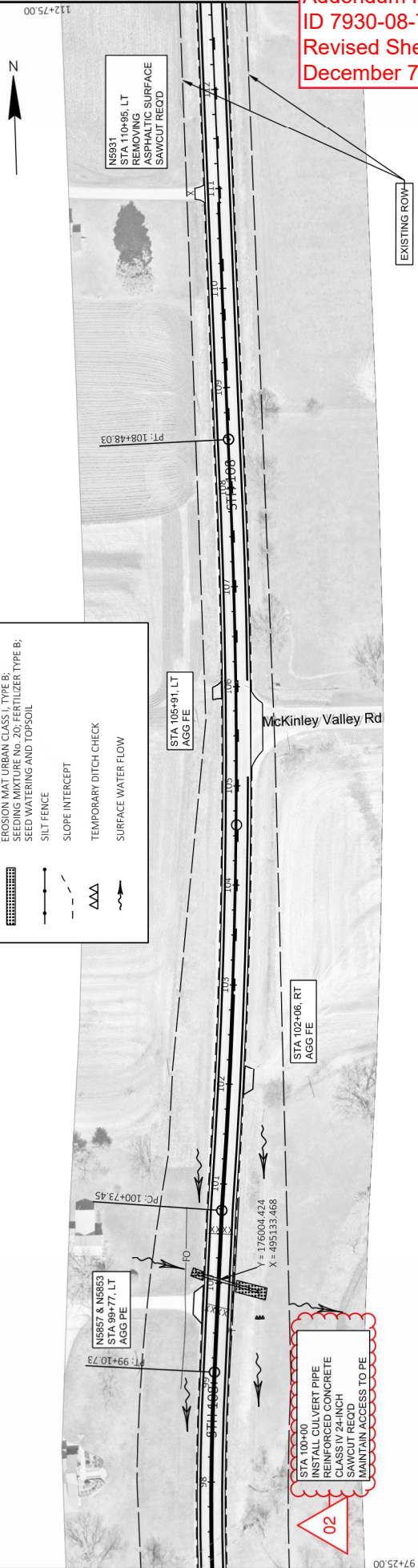
STANDARD DETAIL DRAWING TRAFFIC CONTROL

15C02-09A BARRICADES AND SIGNS FOR MAINLINE CLOSURE
 15C04-05 TRAFFIC CONTROL, ADVANCED WARNING SIGNS FOR 45 M.P.H. OR GREATER TWO-WAY UNDIVIDED ROAD OPEN TO TRAFFIC
 15C12-09A TRAFFIC CONTROL, FOR LANE CLOSURE WITH FLAGGING OPERATION
 15C19-06A MOVING PAVEMENT OPERATION TWO-LANE TWO-WAY ROADWAY
 15D04-03 TRAFFIC CONTROL, SIGNING ON ROADWAYS WITH MILLED SURFACES
 15D04-03 TRAFFIC CONTROL, SIGNING ON ROADWAYS WITH LOOSE GRAVEL
 15D05-01 TRAFFIC CONTROL, MOBILE OPERATIONS ON AN UNDIVIDED ROADWAY

LEGEND

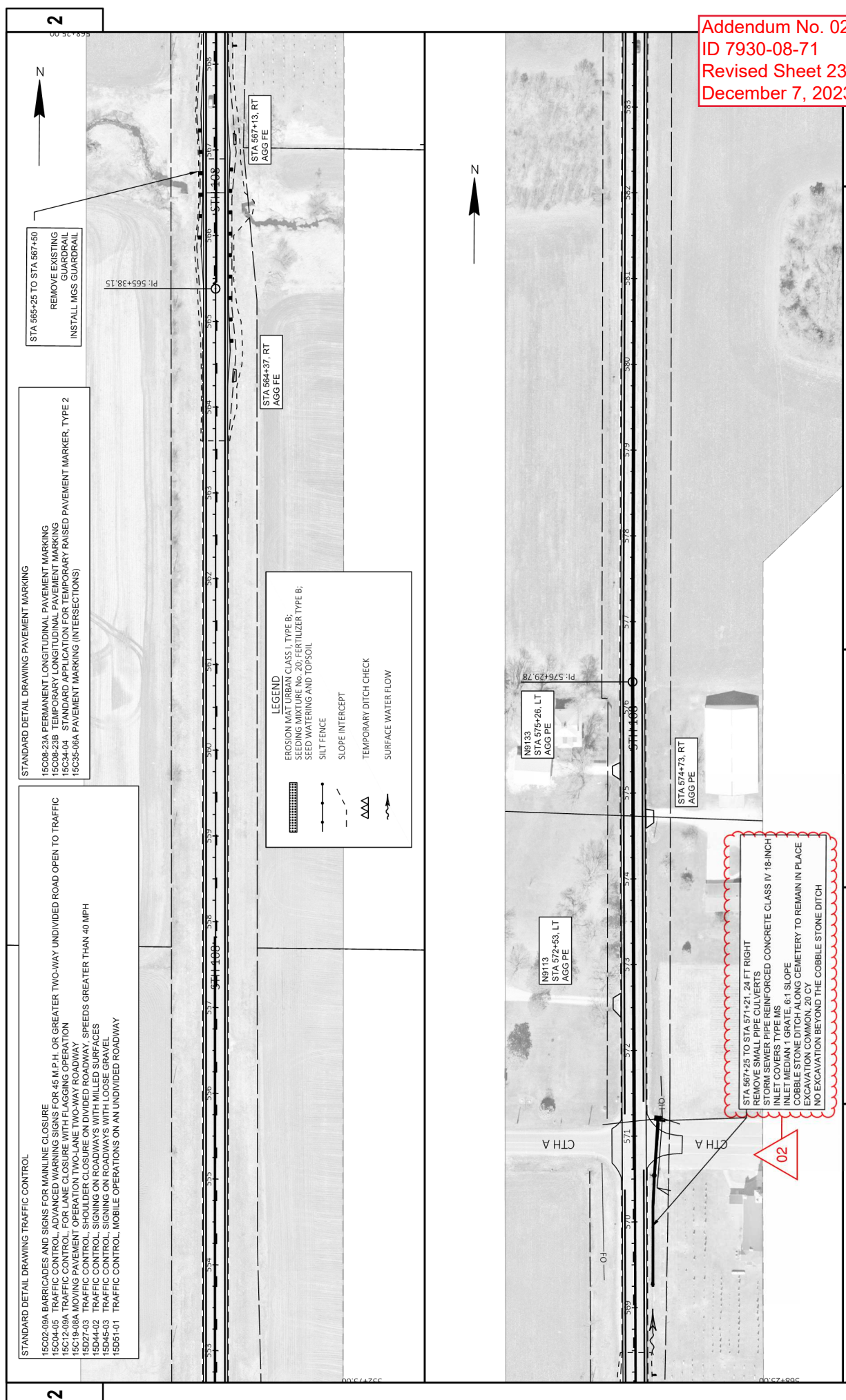
EROSION MAT (URBAN CLASS I, TYPE B);
 SEED WATERING AND TOPSOIL
 SILT FENCE
 SLOPE INTERCEPT
 TEMPORARY DITCH CHECK
 SURFACE WATER FLOW

Addendum No. 02
 ID 7930-08-71
 Revised Sheet 14
 December 7, 2023



02

Addendum No. 02
 ID 7930-08-71
 Revised Sheet 23
 December 7, 2023



STANDARD DETAIL DRAWING TRAFFIC CONTROL

- 15C02-09A BARRICADES AND SIGNS FOR MAINLINE CLOSURE
- 15C04-05 TRAFFIC CONTROL, ADVANCED WARNING SIGNS FOR 45 M.P.H. OR GREATER TWO-WAY UNDIVIDED ROAD OPEN TO TRAFFIC
- 15C12-09A TRAFFIC CONTROL, FOR LANE CLOSURE WITH FLAGGING OPERATION
- 15C19-08A MOVING PAVEMENT OPERATION TWO-LANE TWO-WAY ROADWAY
- 15D27-03 TRAFFIC CONTROL, SHOULDER CLOSURE ON DIVIDED ROADWAY, SPEEDS GREATER THAN 40 MPH
- 15D44-02 TRAFFIC CONTROL, SIGNING ON ROADWAYS WITH MILLED SURFACES
- 15D45-03 TRAFFIC CONTROL, SIGNING ON ROADWAYS WITH LOOSE GRAVEL
- 15D51-01 TRAFFIC CONTROL, MOBILE OPERATIONS ON AN UNDIVIDED ROADWAY

STANDARD DETAIL DRAWING PAVEMENT MARKING

- 15C08-23A PERMANENT LONGITUDINAL PAVEMENT MARKING
- 15C08-23B TEMPORARY LONGITUDINAL PAVEMENT MARKING
- 15C34-04 STANDARD APPLICATION FOR TEMPORARY RAISED PAVEMENT MARKER, TYPE 2
- 15C35-06A PAVEMENT MARKING (INTERSECTIONS)

LEGEND

- EROSION MAT URBAN CLASS I, TYPE B;
- SEEDING MIXTURE No. 20; FERTILIZER TYPE B;
- SEED WATERING AND TOPSOIL
- SILT FENCE
- SLOPE INTERCEPT
- TEMPORARY DITCH CHECK
- SURFACE WATER FLOW

STA 567+25 TO STA 571+21, 24 FT RIGHT
 REMOVE SMALL PIPE CULVERTS
 INLET CLOSURE TYPE HAS
 INLET MEDIAN 1 GRATE 6:1 SLOPE
 COBBLE STONE DITCH ALONG CEMETERY TO REMAIN IN PLACE
 EXCAVATION COMMON, 20 CY
 NO EXCAVATION BEYOND THE COBBLE STONE DITCH

02

614 GUARDRAIL SUMMARY

CATEGORY	STATION	TO	STATION	LOCATION	204.00165 REMOVING GUARDRAIL	614.0010 GRAVING FINISHING	614.2300 MGS GUARDRAIL 3	614.2350 MGS GUARDRAIL SHORT RADIUS	614.2500 MGS THREE BEAM TRANSITION	614.2610 MGS GUARDRAIL TERMINAL LAT	REMARKS	TOPSOIL SY	FERTILIZER TYPE B CY	SEED WATER GAL	SEEDING MIXTURE NO. 20 LB
0010	45+30	-	46+00	LT	70	-	-	-	-	-	SW BRIDGE B-32-183	-	-	-	-
0010	45+25	-	45+95	RT	70	-	-	-	-	-	SE BRIDGE B-32-183	-	-	-	-
0010	46+00	-	47+30	LT	70	-	-	-	-	-	NW BRIDGE B-32-183	-	-	-	-
0010	45+00E	-	46+00	LT	1	-	-	39.4	-	1	SW BRIDGE B-32-183	120	0.15	-	6.6
0010	45+20	-	45+95	RT	-	68	-	39.4	-	-	SE BRIDGE B-32-183 - 8 RADIUS	-	-	-	-
0010	46+60	-	47+56	LT	-	39.4	-	39.4	-	1	NE BRIDGE B-32-183	75	0.10	4.2	4.2
0010	46+60	-	47+50	LT	-	39.4	-	39.4	-	1	NW BRIDGE B-32-183	75	0.10	4.2	4.2
0010	82+51	-	84+57	LT	215	-	-	-	-	-	SECTION 2 LT	-	-	-	-
0010	82+68	-	84+12	RT	132	-	-	-	-	-	SECTION 2 RT	235	0.30	-	12.5
0010	81+82	-	84+12	LT	2	128	-	-	-	2	SECTION 3 RT	-	-	-	-
0010	81+82	-	84+12	RT	2	129	-	-	-	2	SECTION 3 LT	-	-	-	-
0010	565+44E	-	566+97	RT	152	-	-	-	-	-	SECTION 3 RT	-	-	-	-
0010	565+491	-	567+42	LT	152	-	-	-	-	-	SECTION 3 LT	-	-	-	-
0010	565+25	-	567+50	RT	2	118	-	-	-	2	SECTION 3 RT	430	0.55	22.5	22.5
0010	564+86	-	567+42	LT	-	50	-	-	-	2	SECTION 3 LT	200	0.30	10.0	10.0
0010				TOTAL 0010	951	11	418	68	157.6	11		1135	1.50	60.0	60.0

* INFORMATIONAL PURPOSES ONLY FOR ITEM 614.0010 BARRIER SYSTEM GRADING FINISHING, EACH

628 EROSION CONTROL SUMMARY

CATEGORY	STATION	TO	STATION	LOCATION	628.0100 TOPSOIL SY	628.1504 SILT FENCE LF	628.1520 SILT FENCE MAINTENANCE LF	628.1905 MOBILIZATIONS EROSION CONTROL EACH	628.1910 MOBILIZATIONS EROSION CONTROL EACH	628.2008 EROSION NATURAL CLASS TYPE B SY	628.2021 FERTILIZER TYPE B CY	630.0120 SEEDING MIXTURE NO. 20 LB	630.0500 SEED WATER GAL	REMARKS
0010	82+30	-	84+50	LT	657	225	225	-	-	657	0.41	18	11	SLOPE STABILIZATION
0010	81+40	-	82+45	RT	291	225	225	-	-	291	0.18	8	5.00	SLOPE STABILIZATION
0010	81+95	-	82+12	LT	-	-	-	-	-	14	0.50	0.25	-	FE CULVERT PIPE
0010	99+25	-	-	RT	-	-	-	-	-	11	0.01	-	-	CULVERT PIPE
0010	100+00	-	-	LT	11	-	-	-	-	11	0.01	0.50	0.20	CULVERT PIPE
0010	100+00	-	-	RT	49	-	-	-	-	50	0.03	1.00	0.70	CULVERT PIPE
0010	534+75	-	-	LT	60	-	-	-	-	60	0.04	1.60	1.00	CULVERT PIPE
0010	534+75	-	-	RT	60	-	-	-	-	60	0.04	1.60	1.00	CULVERT PIPE
0010				TOTAL 0010	1,192	500	500	2	2	1,181	0.76	32	20	UNDISTRIBUTED

643 TRAFFIC CONTROL SUMMARY

CATEGORY	STATION	TO	STATION	LOCATION	643.0200 TRAFFIC CONTROL DRUMS DAY	643.0420 TRAFFIC CONTROL BARRICADES TYPE III DAY	643.0505 TRAFFIC CONTROL WARNING LIGHTS TYPE A DAY	643.0505 TRAFFIC CONTROL SIGNS DAY	643.0505 TRAFFIC CONTROL SIGNS DAY	643.0505 TRAFFIC CONTROL SIGNS DAY	643.0500 TRAFFIC CONTROL EACH	REMARKS
0010				TOTAL 0010	950	125	100	14	14	1	1	ADVANCED WARNING DRAWING ON MILES SURFACE CHIP SEAL SHOULDER CLOSURE SLOPE STABILIZATION DETOUR

PROJECT NO: 7930-08-71

HWY: STH 108

COUNTY: LA CROSSE

MISCELLANEOUS QUANTITIES

SHEET 59

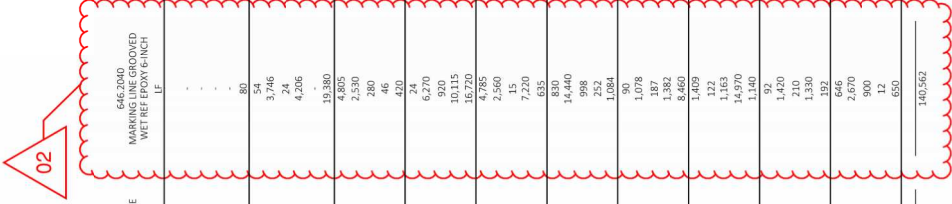
FILE NAME: N:\PDS\327\9308081\SHEETS\PLAN\032021-MQ.DWG

PLOT DATE: 12/5/2023 1:52 PM

PLOT BY: PETERSON, SHANE J

PLOT NAME: 1"=1'

WISDOT/CADD/SHEET 42



646 MARKING SUMMARY

CATEGORY	STATION	TO	STATION	LOCATION	643 3165		643 3170		646 2040		646 6120		REMARKS
					TEMPORARY MARKING LINE PAINT 6-INCH	POINT 6-INCH	TEMPORARY MARKING LINE POXIT 6-INCH	POINT 6-INCH	MARKING LINE GROOVED WET REF POXIT 6-INCH	POINT 6-INCH	MARKING STOP LINE EPOXY 18-INCH	POINT 18-INCH	
0010	30+70	-	-	ML	-	-	-	-	-	-	24	SOUTH CTH C	
0010	570+60	-	-	ML	-	-	-	-	-	-	14	CTH A	
0010	571+25	-	-	ML	-	-	-	-	-	-	14	CTH A	
0010	596+85	-	-	ML	-	-	-	-	-	-	14	NORTH CTH C	
0010	21+80	-	22+60	RT	-	-	-	-	-	-	80	WHITE EDGE LINE	
0010	22+60	-	24+70	RT	-	-	-	-	54	-	-	WHITE EDGE LINE 3' DASHES - OLD 16 RD	
0010	24+70	-	24+70	RT	-	-	-	-	74	-	-	WHITE EDGE LINE - HOFF RD	
0010	24+75	-	24+75	RT	-	-	-	-	21	-	-	WHITE EDGE LINE	
0010	62+15	-	62+15	RT	-	-	-	-	4,206	-	-	WHITE	
0010	63+15	-	105+10	RT	-	-	-	-	-	-	-	WHITE	
0010	82+00	-	85+00	LT	-	500	-	-	-	-	-	WHITE	
0010	106+05	-	289+80	RT	-	-	-	-	19,380	-	-	WHITE EDGE LINE	
0010	52+55	-	570+60	RT	-	-	-	-	4,805	-	-	WHITE EDGE LINE	
0010	571+40	-	596+70	RT	-	-	-	-	2,530	-	-	WHITE EDGE LINE	
0010	597+95	-	600+75	RT	-	-	-	-	280	-	-	WHITE EDGE LINE	
0010	600+75	-	602+60	RT	-	-	-	-	46	-	-	WHITE EDGE LINE 3' DASHES	
0010	604+25	-	607+25	RT	-	-	-	-	40	-	-	WHITE EDGE LINE 3' DASHES	
0010	607+25	-	607+25	RT	-	-	-	-	74	-	-	WHITE EDGE LINE 3' DASHES	
0010	21+80	-	2+22	LT	-	-	-	-	6,270	-	-	WHITE EDGE LINE	
0010	30+70	-	131+75	LT	-	-	-	-	920	-	-	WHITE EDGE LINE	
0010	132+60	-	299+80	LT	-	-	-	-	10,115	-	-	WHITE EDGE LINE	
0010	52+55	-	570+40	LT	-	-	-	-	16,720	-	-	WHITE EDGE LINE	
0010	571+25	-	596+85	LT	-	-	-	-	4,785	-	-	WHITE EDGE LINE	
0010	597+95	-	598+20	LT	-	-	-	-	2,560	-	-	WHITE EDGE LINE 3' DASHES	
0010	600+75	-	604+25	LT	-	-	-	-	15	-	-	WHITE EDGE LINE	
0010	607+25	-	607+25	LT	-	-	-	-	73	-	-	WHITE EDGE LINE	
0010	21+80	-	216+88	ML	-	540	-	635	635	-	-	DASH - SOLID	
0010	26+88	-	2+22	ML	-	830	-	830	830	-	-	SOLID - SOLID	
0010	102+90	-	107+90	ML	-	14,440	-	14,440	14,440	-	-	SOLID - SOLID	
0010	110+85	-	110+85	ML	-	859	-	998	998	-	-	SOLID - DASH	
0010	120+85	-	120+85	ML	-	84	-	252	252	-	-	DASH	
0010	120+95	-	129+95	ML	-	934	-	1,084	1,084	-	-	DASH - SOLID	
0010	129+60	-	130+05	ML	-	90	-	90	90	-	-	SOLID - SOLID	
0010	138+65	-	138+65	ML	-	929	-	1,078	1,078	-	-	SOLID - DASH	
0010	146+15	-	146+15	ML	-	1,193	-	1,382	1,382	-	-	DASH - SOLID	
0010	157+20	-	157+20	ML	-	8,460	-	8,460	8,460	-	-	SOLID - SOLID	
0010	159+50	-	159+50	ML	-	1,220	-	1,409	1,409	-	-	SOLID - DASH	
0010	210+80	-	210+80	ML	-	40	-	122	122	-	-	DASH	
0010	215+65	-	224+95	ML	-	1,004	-	1,163	1,163	-	-	DASH - SOLID	
0010	224+95	-	224+95	ML	-	14,970	-	14,970	14,970	-	-	SOLID - SOLID	
0010	522+55	-	531+10	ML	-	923	-	1,140	1,140	-	-	SOLID - DASH	
0010	531+10	-	531+10	ML	-	1,420	-	1,420	1,420	-	-	DASH	
0010	544+75	-	544+75	ML	-	1,226	-	1,420	1,420	-	-	DASH - SOLID	
0010	547+15	-	547+15	ML	-	210	-	210	210	-	-	SOLID - SOLID	
0010	547+15	-	547+15	ML	-	1,145	-	1,330	1,330	-	-	SOLID - DASH	
0010	557+75	-	557+75	ML	-	64	-	192	192	-	-	DASH	
0010	565+45	-	565+45	ML	-	536	-	646	646	-	-	DASH - SOLID	
0010	570+60	-	570+60	ML	-	2,670	-	2,670	2,670	-	-	SOLID - SOLID	
0010	583+95	-	583+95	ML	-	778	-	900	900	-	-	SOLID - DASH	
0010	591+15	-	591+15	ML	-	4	-	12	12	-	-	DASH	
0010	591+65	-	591+65	ML	-	562	-	650	650	-	-	DASH - SOLID	
0010	591+65	-	596+85	ML	-	562	-	650	650	-	-	DASH - SOLID	
SUBTOTAL 1										54,333	56,362	140,562	66

646 MARKING SUMMARY CONTINUED										
CATEGORY	643 3185 TEMPORARY MARKING LINE PAINT 6-INCH		LOCATION	643 3170 TEMPORARY MARKING LINE EPOXY 6-INCH		REMARKS	646 2040 MARKING LINE GROOVED WET REF EPOXY 6-INCH		646 6120 MARKING STOP LINE EPOXY 18-INCH	
	STATION	TO		STATION	TO		LF	LF	LF	LF
0010	597+65	-	602+40	-	ML	594	-	-	-	DASH - SOLID
0010	602+40	-	606+85	-	ML	890	-	-	-	SOLID - SOLID
0010	606+85	-	615+85	-	ML	1,130	-	-	-	SOLID - DASH
0010	615+85	-	619+20	-	ML	28	-	-	-	DASH
0010	619+20	-	624+95	-	ML	720	-	-	-	DASH - SOLID
0010	624+95	-	627+50	-	ML	60	-	-	-	DASH
0010	627+50	-	633+40	-	ML	637	-	-	-	SOLID - DASH
0010	633+40	-	636+20	-	ML	623	-	-	-	SOLID - SOLID
0010	636+20	-	641+95	-	ML	720	-	-	-	DASH
0010	641+95	-	644+20	-	ML	48	-	-	-	DASH
0010	644+20	-	650+00	-	ML	720	-	-	-	SOLID - DASH
0010	650+00	-	655+30	-	ML	655	-	-	-	DASH - SOLID
0010	655+30	-	657+75	-	ML	20	-	-	-	DASH
0010	657+75	-	663+50	-	ML	621	-	-	-	SOLID - DASH
0010	663+50	-	670+40	-	ML	58	-	-	-	DASH
					SUBTOTAL 2	7,364		0		
					SUBTOTAL 1	54,333		66		
					SUBTOTAL 2	6,242		7,364		
					PROJECT TOTAL 0010	80,575		147,926		

650 STAKING SUMMARY										
CATEGORY	650 4000 CONSTRUCTION STAKING STORM SEWER		LOCATION	650 6000 CONSTRUCTION STAKING PIPE CULVERTS		REMARKS	650 8000 CONSTRUCTION STAKING RESURFACING REFERENCE		650 9920 CONSTRUCTION STAKING SURFACE CONTROL (PROJECT 101 7930-08-71)	
	STATION	TO		STATION	TO		LF	LF	LF	LF
0010	21+90	-	670+40	-	ML	-	-	41,385	1	-
0010	84+51	-	84+57	-	ML	1	-	-	-	706
0010	84+57	-	84+12	-	RT	-	-	-	-	144
0010	84+12	-	84+12	-	RT	-	-	-	-	-
0010	100+00	-	-	-	ML	1	-	-	-	-
0010	534+26	-	-	-	ML	-	-	-	-	-
0010	567+87	-	567+87	-	ML	-	-	-	-	-
0010	568+38	-	568+38	-	RT	-	-	-	-	411
0010	564+97	-	564+97	-	LT	-	-	-	-	341
0010	567+50	-	572+00	-	RT	1	-	-	-	-
0010	589+25	-	570+19	-	RT	1	-	-	-	-
0010	570+19	-	570+19	-	RT	1	-	-	-	-
0010	570+19	-	571+21	-	RT	1	-	-	-	-
0010	570+54	-	571+21	-	RT	1	-	-	-	-
					TOTAL 0010	3	4	41,385	1	1,102

648 NO PASSING ZONES										
CATEGORY	648 0010 NO PASSING ZONES		LOCATION	648 0010 NO PASSING ZONES		REMARKS	648 0010 NO PASSING ZONES		648 0010 NO PASSING ZONES	
	STATION	TO		STATION	TO		LF	LF	LF	LF
0010	85+00	-	85+00	-	LT	5	-	215+65	3.7	ML
0010	85+00	-	85+00	-	ML	2	-	670+40	2.8	ML
					TOTAL 0010	7	-	-	-	6.5

PROJECT NO: 7930-08-71 HWY: STH 108 COUNTY: LA CROSSE

FILE NAME: N:\PDS\79300801\SHEETS\PLAN\03201-MQ.DWG PLOT DATE: 12/5/2023 1:53 PM PLOT NAME: PETERSON, SHANE J PLOT SCALE: 1"=1'

MISCELLANEOUS QUANTITIES SHEET 61

NOTE: USE ITEM SPV 0060.02 IF LANDMARK REFERENCE MONUMENT CANNOT BE FOUND OR IS DAMAGED. DO NOT USE BOTH.



Proposal Schedule of Items

Proposal ID: 20231212013 Project(s): 7930-08-71

Federal ID(s): WISC 2024062

SECTION: 0001 Contract Items

Alt Set ID: Alt Mbr ID:

Proposal Line Number	Item ID Description	Approximate Quantity and Units	Unit Price	Bid Amount
0002	203.0100 Removing Small Pipe Culverts	4.000 EACH	_____.	_____.
0004	203.0220 Removing Structure (structure) 01. B-32-181	1.000 EACH	_____.	_____.
0006	203.0220 Removing Structure (structure) 02. STA 534+30	1.000 EACH	_____.	_____.
0008	204.0100 Removing Concrete Pavement	70.000 SY	_____.	_____.
0010	204.0110 Removing Asphaltic Surface	1,460.000 SY	_____.	_____.
0012	204.0115 Removing Asphaltic Surface Butt Joints	2,885.000 SY	_____.	_____.
0014	204.0120 Removing Asphaltic Surface Milling	82,395.000 SY	_____.	_____.
0016	204.0165 Removing Guardrail	951.000 LF	_____.	_____.
0018	205.0100 Excavation Common	237.000 CY	_____.	_____.
0020	206.2001 Excavation for Structures Culverts (structure) 01. B-32-181	1.000 EACH	_____.	_____.
0022	206.5001 Cofferdams (structure) 01. B-32-181	1.000 EACH	_____.	_____.
0024	210.2500 Backfill Structure Type B	74.000 TON	_____.	_____.
0026	211.0101 Prepare Foundation for Asphaltic Paving (project) 01. 7930-08-71	1.000 EACH	_____.	_____.
0028	211.0400 Prepare Foundation for Asphaltic Shoulders	682.000 STA	_____.	_____.
0030	213.0100 Finishing Roadway (project) 01. 7930-08-71	1.000 EACH	_____.	_____.



Proposal Schedule of Items

Proposal ID: 20231212013 Project(s): 7930-08-71

Federal ID(s): WISC 2024062

SECTION: 0001 Contract Items

Alt Set ID: Alt Mbr ID:

Proposal Line Number	Item ID Description	Approximate Quantity and Units	Unit Price	Bid Amount
0032	305.0110 Base Aggregate Dense 3/4-Inch	2,946.000 TON	_____.	_____.
0034	305.0120 Base Aggregate Dense 1 1/4-Inch	100.000 TON	_____.	_____.
0036	311.0115 Breaker Run	7.000 CY	_____.	_____.
0038	455.0505 Asphaltic Material Seal Coat	9,940.000 GAL	_____.	_____.
0040	455.0605 Tack Coat	13,175.000 GAL	_____.	_____.
0042	460.0105.S HMA Percent Within Limits (PWL) Test Strip Volumetrics	1.000 EACH	_____.	_____.
0044	460.0110.S HMA Percent Within Limits (PWL) Test Strip Density	2.000 EACH	_____.	_____.
0046	460.2005 Incentive Density PWL HMA Pavement	8,200.000 DOL	1.00000	8,200.00
0048	460.2007 Incentive Density HMA Pavement Longitudinal Joints	13,770.000 DOL	1.00000	13,770.00
0050	460.2010 Incentive Air Voids HMA Pavement	21,400.000 DOL	1.00000	21,400.00
0052	460.5224 HMA Pavement 4 LT 58-28 S	21,395.000 TON	_____.	_____.
0054	465.0105 Asphaltic Surface	190.000 TON	_____.	_____.
0056	465.0120 Asphaltic Surface Driveways and Field Entrances	111.000 TON	_____.	_____.
0058	465.0125 Asphaltic Surface Temporary	95.000 TON	_____.	_____.
0060	504.0100 Concrete Masonry Culverts	15.000 CY	_____.	_____.



Proposal Schedule of Items

Proposal ID: 20231212013 Project(s): 7930-08-71

Federal ID(s): WISC 2024062

SECTION: 0001 Contract Items

Alt Set ID: Alt Mbr ID:

Proposal Line Number	Item ID Description	Approximate Quantity and Units	Unit Price	Bid Amount
0062	505.0600 Bar Steel Reinforcement HS Coated Structures	1,150.000 LB	_____.	_____.
0064	511.1200 Temporary Shoring (structure) 01. B-32-181	279.000 SF	_____.	_____.
0066	516.0500 Rubberized Membrane Waterproofing	8.000 SY	_____.	_____.
0068	520.1024 Apron Endwalls for Culvert Pipe 24-Inch	4.000 EACH	_____.	_____.
0070	520.3524 Culvert Pipe Class III-B 24-Inch	50.000 LF	_____.	_____.
0072	520.8000 Concrete Collars for Pipe	1.000 EACH	_____.	_____.
0074	521.1018 Apron Endwalls for Culvert Pipe Steel 18-Inch	2.000 EACH	_____.	_____.
0076	521.3118 Culvert Pipe Corrugated Steel 18-Inch	92.000 LF	_____.	_____.
0080	522.0572 Culvert Pipe Reinforced Concrete Class V 72-Inch	90.000 LF	_____.	_____.
0082	522.1072 Apron Endwalls for Culvert Pipe Reinforced Concrete 72-Inch	2.000 EACH	_____.	_____.
0084	606.0300 Riprap Heavy	8.000 CY	_____.	_____.
0086	608.0418 Storm Sewer Pipe Reinforced Concrete Class IV 18-Inch	197.000 LF	_____.	_____.
0088	611.0530 Manhole Covers Type J	1.000 EACH	_____.	_____.
0090	611.0642 Inlet Covers Type MS	1.000 EACH	_____.	_____.
0092	611.2004 Manholes 4-FT Diameter	1.000 EACH	_____.	_____.



Proposal Schedule of Items

Proposal ID: 20231212013 Project(s): 7930-08-71

Federal ID(s): WISC 2024062

SECTION: 0001 Contract Items

Alt Set ID: Alt Mbr ID:

Proposal Line Number	Item ID Description	Approximate Quantity and Units	Unit Price	Bid Amount
0094	611.3901 Inlets Median 1 Grate	1.000 EACH	_____.	_____.
0096	614.0010 Barrier System Grading Shaping Finishing	11.000 EACH	_____.	_____.
0098	614.2300 MGS Guardrail 3	418.000 LF	_____.	_____.
0100	614.2350 MGS Guardrail Short Radius	68.000 LF	_____.	_____.
0102	614.2500 MGS Thrie Beam Transition	157.600 LF	_____.	_____.
0104	614.2610 MGS Guardrail Terminal EAT	11.000 EACH	_____.	_____.
0106	618.0100 Maintenance and Repair of Haul Roads (project) 01. 7930-08-71	1.000 EACH	_____.	_____.
0108	619.1000 Mobilization	1.000 EACH	_____.	_____.
0110	624.0100 Water	91.000 MGAL	_____.	_____.
0112	625.0100 Topsoil	1,192.000 SY	_____.	_____.
0114	628.1504 Silt Fence	500.000 LF	_____.	_____.
0116	628.1520 Silt Fence Maintenance	500.000 LF	_____.	_____.
0118	628.1905 Mobilizations Erosion Control	2.000 EACH	_____.	_____.
0120	628.1910 Mobilizations Emergency Erosion Control	2.000 EACH	_____.	_____.
0122	628.2008 Erosion Mat Urban Class I Type B	1,181.000 SY	_____.	_____.
0124	628.7005 Inlet Protection Type A	1.000 EACH	_____.	_____.



Proposal Schedule of Items

Proposal ID: 20231212013 Project(s): 7930-08-71

Federal ID(s): WISC 2024062

SECTION: 0001 Contract Items

Alt Set ID: Alt Mbr ID:

Proposal Line Number	Item ID Description	Approximate Quantity and Units	Unit Price	Bid Amount
0126	628.7504 Temporary Ditch Checks	34.000 LF	_____.	_____.
0128	629.0210 Fertilizer Type B	0.760 CWT	_____.	_____.
0130	630.0120 Seeding Mixture No. 20	32.000 LB	_____.	_____.
0132	630.0500 Seed Water	20.000 MGAL	_____.	_____.
0134	642.5001 Field Office Type B	1.000 EACH	_____.	_____.
0136	643.0300 Traffic Control Drums	950.000 DAY	_____.	_____.
0138	643.0420 Traffic Control Barricades Type III	125.000 DAY	_____.	_____.
0140	643.0705 Traffic Control Warning Lights Type A	100.000 DAY	_____.	_____.
0142	643.0900 Traffic Control Signs	4,865.000 DAY	_____.	_____.
0144	643.1050 Traffic Control Signs PCMS	14.000 DAY	_____.	_____.
0146	643.3165 Temporary Marking Line Paint 6-Inch	60,575.000 LF	_____.	_____.
0148	643.3170 Temporary Marking Line Epoxy 6-Inch	63,726.000 LF	_____.	_____.
0150	643.5000 Traffic Control	1.000 EACH	_____.	_____.
0152	645.0120 Geotextile Type HR	20.000 SY	_____.	_____.
0156	646.6120 Marking Stop Line Epoxy 18-Inch	66.000 LF	_____.	_____.
0158	648.0100 Locating No-Passing Zones	6.500 MI	_____.	_____.



Proposal Schedule of Items

Proposal ID: 20231212013 Project(s): 7930-08-71

Federal ID(s): WISC 2024062

SECTION: 0001 Contract Items

Alt Set ID: Alt Mbr ID:

Proposal Line Number	Item ID Description	Approximate Quantity and Units	Unit Price	Bid Amount
0160	650.4000 Construction Staking Storm Sewer	3.000 EACH	_____.	_____.
0162	650.6000 Construction Staking Pipe Culverts	4.000 EACH	_____.	_____.
0164	650.8000 Construction Staking Resurfacing Reference	41,385.000 LF	_____.	_____.
0166	650.9911 Construction Staking Supplemental Control (project) 01. 7930-08-71	1.000 EACH	_____.	_____.
0168	650.9920 Construction Staking Slope Stakes	1,102.000 LF	_____.	_____.
0170	690.0150 Sawing Asphalt	310.000 LF	_____.	_____.
0172	690.0250 Sawing Concrete	59.000 LF	_____.	_____.
0174	740.0440 Incentive IRI Ride	26,080.000 DOL	1.00000	26,080.00
0176	999.2000.S Installing and Maintaining Bird Deterrent System (station) 01. 396+00	1.000 EACH	_____.	_____.
0178	ASP.1T0A On-the-Job Training Apprentice at \$5.00/HR	600.000 HRS	5.00000	3,000.00
0180	ASP.1T0G On-the-Job Training Graduate at \$5.00/HR	600.000 HRS	5.00000	3,000.00
0182	SPV.0060 Special 01. Verify And Replace Existing Land Parcel Monument	7.000 EACH	_____.	_____.
0184	SPV.0060 Special 02. Research And Locate Existing Land Parcel Monument	7.000 EACH	_____.	_____.
0186	SPV.0060 Special 03. Strapping B-32-181	3.000 EACH	_____.	_____.



Proposal Schedule of Items

Proposal ID: 20231212013 Project(s): 7930-08-71

Federal ID(s): WISC 2024062

SECTION: 0001 Contract Items

Alt Set ID: Alt Mbr ID:

Proposal Line Number	Item ID Description	Approximate Quantity and Units	Unit Price	Bid Amount
0188	SPV.0060 Special 04. Cleaning Box Culvert B-32-181	1.000 EACH	_____.	_____.
0190	SPV.0125 Special 01. Prepare Existing Pavement For Asphaltic Seal Coat	1.350 MI	_____.	_____.
0192	SPV.0180 Special 01. Removing Distressed Pavement Milling	1,675.000 SY	_____.	_____.
0194	SPV.0195 Special 01. Large Aggregate Seal Coat	254.000 TON	_____.	_____.
0196	SPV.0195 Special 02. Select Borrow Special	502.000 TON	_____.	_____.
0198	522.0424 Culvert Pipe Reinforced Concrete Class IV 24-Inch	62.000 LF	_____.	_____.
0200	646.2040 Marking Line Grooved Wet Ref Epoxy 6-Inch	147,926.000 LF	_____.	_____.
Section: 0001			Total:	_____.
			Total Bid:	_____.