



Wisconsin Department of Transportation

Division of Transportation Systems Development

Bureau of Project Development
4822 Madison Yards Way, 4th Floor South
Madison, WI 53705

January 3, 2024

Telephone: (608) 266-1631
Facsimile (FAX): (608) 266-8459

NOTICE TO ALL CONTRACTORS:

Proposal #05: 5880-01-70, WISC 2024110
Mauston – Wisconsin Dells
North County Line to STH 13
USH 12
Sauk County

Letting of January 9, 2024

This is Addendum No. 01, which provides for the following:

Special Provisions:

Revised Special Provisions	
Article No.	Description
6	Utilities

Schedule of Items:

Added Bid Item Quantities					
Bid Item	Item Description	Unit	Proposal Total Prior to Addendum	Quantity Added	Proposal Total After Addendum
608.3012	Storm Sewer Pipe Class III-A 12-Inch	LF	0	48	48

Deleted Bid Item Quantities					
Bid Item	Item Description	Unit	Proposal Total Prior to Addendum	Proposal Quantity Change (-)	Proposal Total After Addendum
608.0312	Storm Sewer Pipe Reinforced Concrete Class III 12-Inch	LF	48	-48	0

Plan Sheets:

Revised Plan Sheets	
Plan Sheet	Plan Sheet Title (brief description of changes to sheet)
21	Construction Detail – storm sewer. Corrected elevations.
51	Miscellaneous Quantities (split out quantity for Select Crushed Material to be used for backfilling EBS areas)
54	Miscellaneous Quantities (switched bid item for storm sewer)

The responsibility for notifying potential subcontractors and suppliers of these changes remains with the prime contractor.

Sincerely,

Mike Coleman

Proposal Development Specialist
Proposal Management Section

ADDENDUM NO. 01

5880-01-70

January 3, 2024

6. Utilities.

*Replace paragraph eight under section titled **Alliant Energy (Gas/Petroleum)** with the following:*

All prior to construction relocations are anticipated to start February 5, 2024 and take 30 working days to complete.

Schedule of Items

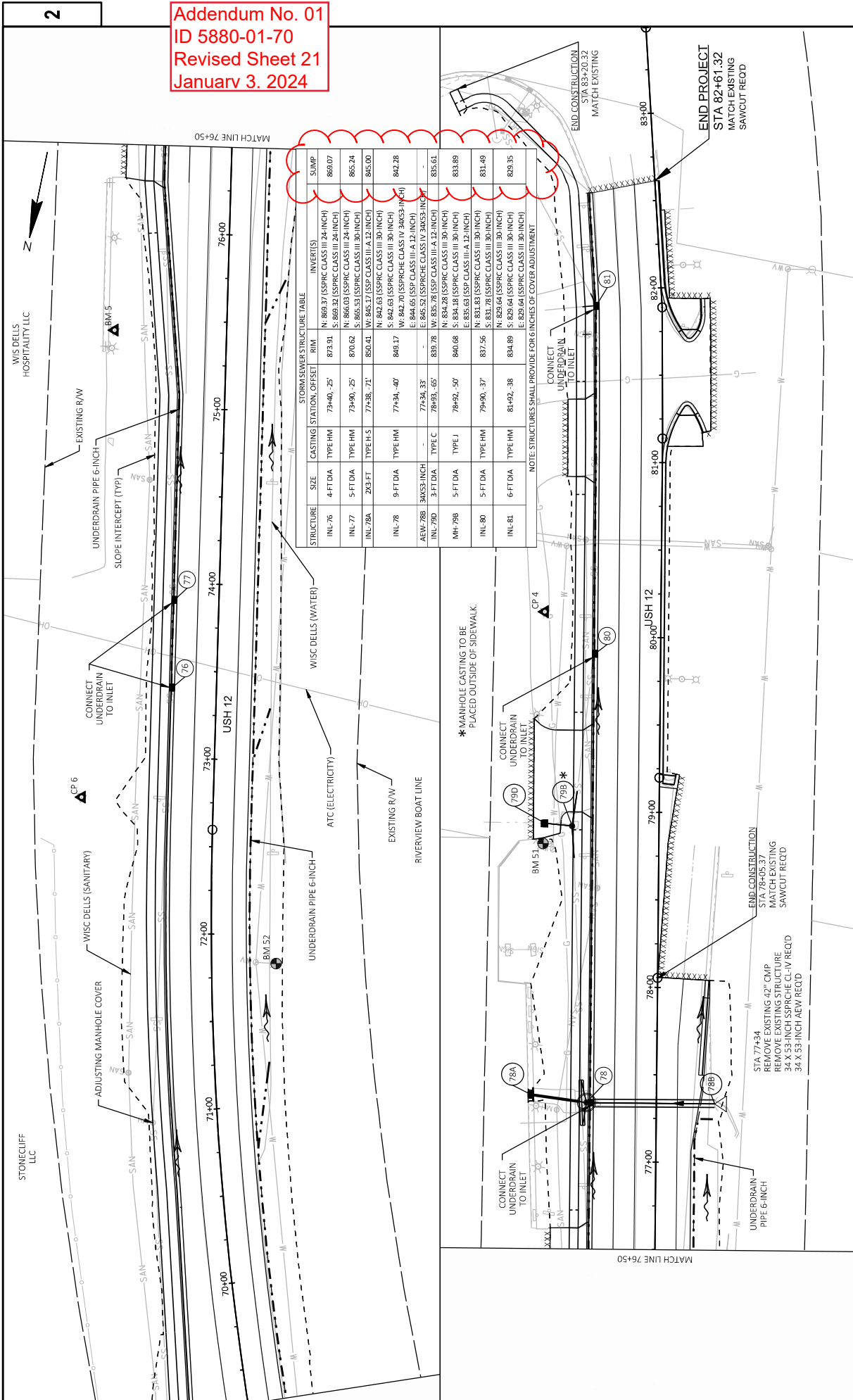
Attached, dated January 3, 2024, are the revised Schedule of Items Pages 1 – 9.

Plan Sheets

The following 8½ x 11-inch sheets are attached and made part of the plans for this proposal:
Revised: 21, 51, and 54.

END OF ADDENDUM

Addendum No. 01
 ID 5880-01-70
 Revised Sheet 21
 January 3, 2024



STRUCTURE	SIZE	CASTING TYPE	STATION	OFFSET	RIM	INVERT(S)
INL-76	4-FT DIA	TYPE HM	73+40	-25'	873.91	N: 869.37 (SSPRC CLASS III 24-INCH) S: 869.32 (SSPRC CLASS III 24-INCH)
INL-77	5-FT DIA	TYPE HM	73+90	-25'	870.62	N: 866.03 (SSPRC CLASS III 24-INCH) S: 865.53 (SSPRC CLASS III 30-INCH)
INL-78A	2X3-FT	TYPE H-S	77+38	-71'	850.41	N: 845.17 (SSPRC CLASS III A 12-INCH) S: 842.63 (SSPRC CLASS III 30-INCH)
INL-78	9-FT DIA	TYPE HM	77+34	-40'	849.17	N: 842.63 (SSPRC CLASS III 30-INCH) S: 842.70 (SSPRC CLASS IV 34X53-INCH)
AEW-78B	34X53-INCH		77+34	33'	-	E: 844.65 (SSP CLASS III A 12-INCH) S: 845.52 (SSPRC CLASS IV 34X53-INCH)
INL-79D	3-FT DIA	TYPE CC	78+93	-65'	839.78	W: 835.78 (SSP CLASS III A 12-INCH) E: 834.18 (SSPRC CLASS III 30-INCH)
MH-79B	5-FT DIA	TYPE J	78+92	-50'	840.68	E: 836.63 (SSP CLASS III A 12-INCH) S: 831.78 (SSPRC CLASS III 30-INCH)
INL-80	5-FT DIA	TYPE HM	79+90	-37'	837.56	N: 829.64 (SSPRC CLASS III 30-INCH) S: 829.64 (SSPRC CLASS III 30-INCH)
INL-81	6-FT DIA	TYPE HM	81+92	-38'	834.89	S: 829.64 (SSPRC CLASS III 30-INCH) E: 829.64 (SSPRC CLASS III 30-INCH)

NOTE: STRUCTURES SHALL PROVIDE FOR INCHES OF COVER ADJUSTMENT

*MANHOLE CASTING TO BE PLACED OUTSIDE OF SIDEWALK.

PROJECT NO: 5880-01-70	HWY: USH 12	COUNTY: SAUK	PLAN AND PROFILE: STORM SEWER	SHEET: 21	E
FILE NAME: O:\PDS\CD\58800100\SHRETS\PLAN\022501-SS.DWG	LAYOUT NAME: 050101-SS	DATE: 12/21/2023 11:49 AM	DESIGNER: DE MALENOSKI	PLLOT NAME: #####	PLLOT SCALE: WIS07/CAD05 SHEET 44

Addendum No. 01
ID 5880-01-70
Revised Sheet 51
January 3, 2024

205-REMOVALS

CATEGORY	STATION	TO	STATION	LOCATION	SY	204.0100	204.0110	204.0115	204.0120	204.0150	204.0155
STAGE 1											
0010	60+58	-	82+61	USH 12	9,240	460					
0010	66+87	-	68+19	USH 12 LT	-					140	
0010	68+62	-	70+56	USH 12 LT	-					240	8
0010	77+37	-	77+37	USH 12 LT	-						
0010	80+99	-	82+61	USH 12 RT	-					120	
0010	197+29	-	199+39	PIONEER DRIVE	-			22	470		
				STAGE 1 SUBTOTAL	9,240	460		22	470		8
STAGE 2											
0010	10+23	-	41+50	USH 12	8,340						
				STAGE 2 SUBTOTAL	8,340	0		0	0		0
				TOTAL 0010	17,580	460	22	470		500	8

305-645 BASE COURSE

CATEGORY	STATION	TO	STATION	LOCATION	TON	305.0110	305.0120	312.0110	624.0100	645.0220	REMARKS
STAGE 1											
0010	60+58	-	82+61	USH 12	230	9,780	8,350	210	13,100		
0010	60+58	-	82+61	USH 12	-	-	10	-	-		RELIEF TRENCHES
0010	60+58	-	82+61	USH 12	-	-	2,050	-	-		UNDISTRIBUTED - EBS AREAS
0010	60+58	-	82+61	USH 12	50	200	200	5	-		UNDISTRIBUTED
				STAGE 1 SUBTOTAL	280	9,980	10,610	215	13,100		
STAGE 2											
0010	10+23	-	41+50	USH 12	710	11,900	8,850	260	13,900		
0010	10+23	-	41+50	USH 12	-	-	60	-	-		RELIEF TRENCHES
0010	10+23	-	41+50	USH 12	-	-	2,050	-	-		UNDISTRIBUTED - EBS AREAS
0010	10+23	-	41+50	USH 12	30	200	-	5	-		DRIVEWAYS
0010	10+23	-	41+50	USH 12	50	200	200	5	-		UNDISTRIBUTED
				STAGE 2 SUBTOTAL	790	12,100	11,160	270	13,900		
				TOTAL 0010	1,070	22,080	21,770	485	27,000		
STAGE 1											
0030	60+58	-	82+61	USH 12	-	410	-	10	-		DRIVEWAYS AND SIDEWALK
				TOTAL 0030	-	410	-	10	-		
				PROJECT TOTAL	1,070	22,490	21,770	495	27,000		

465.0315- ASPHALTIC FLUMES

CATEGORY	STATION	TO	STATION	LOCATION	SY	REMARKS
0010	66+73	-	68+41	USH 12	53	NW, NE, SW quadrants of Pioneer Dr intersection
				TOTAL 0010	53	

Addendum No. 01
ID 5880-01-70
Revised Sheet 54
January 3, 2024

611-STORMSEWER

CATEGORY	STATION	TO	STATION	LOCATION	STR. NO.	PIPE NO.	REMOVING STRUCTURE (STRUCTURE (03. STA 77+34)EACH	REMOVING MANHOLES EACH	REMOVING INLETS EACH	REMOVING STORMSEWER (SIZE) (01. 24- INCH)LF	REMOVING STORMSEWER (SIZE) (02. 30- INCH)LF	CONCRETE COLLARS FOR PIPE EACH	STORMSEWER PIPE REINFORCED CONCRETE CLASS III 24-INCH	STORMSEWER PIPE REINFORCED CONCRETE CLASS III 30-INCH	STORMSEWER PIPE REINFORCED CONCRETE CLASS III 30-INCH	STORM SEWER PIPE REINFORCED CONCRETE HORIZONTAL ELLIPTICAL CLASS HE/IV 34X53-INCH	608.2434 STORM SEWER PIPE REINFORCED CONCRETE HORIZONTAL ELLIPTICAL CLASS HE/IV 34X53-INCH	608.0330 STORMSEWER PIPE REINFORCED CONCRETE CLASS III 30-INCH	608.0324 STORMSEWER PIPE REINFORCED CONCRETE CLASS III 24-INCH	520.8000 CONCRETE COLLARS FOR PIPE EACH	204.0245.02 REMOVING STORMSEWER (SIZE) (02. 30- INCH)LF	204.0245.01 REMOVING STORMSEWER (SIZE) (01. 24- INCH)LF	204.0220 REMOVING INLETS EACH	204.0210 REMOVING MANHOLES EACH	203.0220.03 REMOVING STRUCTURE (STRUCTURE (03. STA 77+34)EACH	REMARKS			
0010	68+08	-	68+08	43.6' LT	-	-	-	-	-	-	-	-	-	-	-	-	608.3012	-	-	-	-	-	-	-	-	-	EXISTING SANITARY MANHOLE		
0010	68+11	-	68+11	51.2' LT	-	-	-	-	-	-	-	-	-	-	-	-	-	-	-	-	-	-	-	-	-	-	EXISTING STORM MANHOLE		
0010	68+57	-	68+57	53.8' LT	-	-	-	-	-	-	-	-	-	-	-	-	-	-	-	-	-	-	-	-	-	-	EXISTING STORM MANHOLE		
0010	68+60	-	68+60	72.2' LT	-	-	-	-	-	-	-	-	-	-	-	-	-	-	-	-	-	-	-	-	-	-	EXISTING STORM MANHOLE		
0010	68+62	-	68+62	52.1' LT	-	-	-	-	-	-	-	-	-	-	-	-	-	-	-	-	-	-	-	-	-	-	EXISTING STORM MANHOLE		
0010	70+94	-	70+94	36.8' LT	-	-	-	-	-	-	-	-	-	-	-	-	-	-	-	-	-	-	-	-	-	-	EXISTING STORM MANHOLE		
0010	73+40	-	73+40	25.4' LT	76	-	1	-	-	16	-	2	16	-	-	-	-	-	-	-	-	-	-	-	-	-	EXISTING VAULT, 42"X54"		
0010	73+90	-	73+90	25.4' LT	77	-	1	-	8	8	2	8	8	-	-	-	-	-	-	-	-	-	-	-	-	-	CONCRETE BOX CULVERT, 36" OMP		
0010	77+34	-	77+34	39.9' LT	78	-	1	-	-	16	-	-	16	-	-	-	-	-	-	-	-	-	-	-	-	-	EXISTING PIPE REMOVAL INCLUDED REMOVING OLD STRUCTURE		
0010	77+34	-	77+34	USH12	-	788.78	-	-	-	-	-	-	-	-	-	-	73	-	-	-	-	-	-	-	-	-	EXISTING SANITARY MANHOLE		
0010	77+34	-	77+34	33*RT	788	-	-	-	-	-	-	-	-	-	-	-	-	-	-	-	-	-	-	-	-	-	EXISTING SANITARY MANHOLE		
0010	78+56	-	78+56	35' LT	-	-	-	-	-	-	-	-	-	-	-	-	-	-	-	-	-	-	-	-	-	-	EXISTING SANITARY MANHOLE		
0010	79+90	-	79+90	37.4' LT	80	-	1	-	-	16	2	16	16	-	-	-	-	-	-	-	-	-	-	-	-	-	EXISTING SANITARY MANHOLE		
0010	80+56	-	80+56	43.2' LT	-	-	-	-	-	-	-	-	-	-	-	-	-	-	-	-	-	-	-	-	-	-	-	EXISTING SANITARY MANHOLE	
0010	81+92	-	81+92	37.6' LT	81	-	1	-	-	24	3	24	24	-	-	-	-	-	-	-	-	-	-	-	-	-	-	EXISTING SANITARY MANHOLE	
TOTAL 0010							1	4	-	24	64	9	24	64	73	-	-	-	-	-	-	-	-	-	-	-	-	-	
TOTAL 0030							-	-	1	38	2	2	38	38	48	-	-	-	-	-	-	-	-	-	-	-	-	-	-
PROJECT TOTAL							1	4	1	102	11	11	24	102	73	48	-	-	-	-	-	-	-	-	-	-	-	-	



Proposal Schedule of Items

Proposal ID: 20240109005 Project(s): 5880-01-70

Federal ID(s): WISC 2024110

SECTION: 0001 Contract Items

Alt Set ID: Alt Mbr ID:

Proposal Line Number	Item ID Description	Approximate Quantity and Units	Unit Price	Bid Amount
0002	203.0220 Removing Structure (structure) 01. Sta 16+29	1.000 EACH	_____.	_____.
0004	203.0220 Removing Structure (structure) 02. Sta 23+29	1.000 EACH	_____.	_____.
0006	203.0220 Removing Structure (structure) 03. Sta 77+34	1.000 EACH	_____.	_____.
0008	204.0100 Removing Concrete Pavement	17,580.000 SY	_____.	_____.
0010	204.0110 Removing Asphaltic Surface	460.000 SY	_____.	_____.
0012	204.0115 Removing Asphaltic Surface Butt Joints	22.000 SY	_____.	_____.
0014	204.0120 Removing Asphaltic Surface Milling	470.000 SY	_____.	_____.
0016	204.0150 Removing Curb & Gutter	500.000 LF	_____.	_____.
0018	204.0155 Removing Concrete Sidewalk	8.000 SY	_____.	_____.
0020	204.0210 Removing Manholes	4.000 EACH	_____.	_____.
0022	204.0220 Removing Inlets	1.000 EACH	_____.	_____.
0024	204.0245 Removing Storm Sewer (size) 01. 24-Inch	24.000 LF	_____.	_____.
0026	204.0245 Removing Storm Sewer (size) 02. 30-Inch	102.000 LF	_____.	_____.
0028	205.0100 Excavation Common	23,635.000 CY	_____.	_____.
0030	213.0100 Finishing Roadway (project) 01. 5880-01-70	1.000 EACH	_____.	_____.



Proposal Schedule of Items

Proposal ID: 20240109005 Project(s): 5880-01-70

Federal ID(s): WISC 2024110

SECTION: 0001 Contract Items

Alt Set ID: Alt Mbr ID:

Proposal Line Number	Item ID Description	Approximate Quantity and Units	Unit Price	Bid Amount
0032	305.0110 Base Aggregate Dense 3/4-Inch	1,070.000 TON	_____.	_____.
0034	305.0120 Base Aggregate Dense 1 1/4-Inch	22,490.000 TON	_____.	_____.
0036	305.0410 Aggregate Detours	25.000 TON	_____.	_____.
0038	310.0110 Base Aggregate Open-Graded	123.000 TON	_____.	_____.
0040	312.0110 Select Crushed Material	21,700.000 TON	_____.	_____.
0042	371.2000.S QMP Base Aggregate Dense 1 1/4-Inch Compaction	26.000 EACH	_____.	_____.
0044	416.0610 Drilled Tie Bars	30.000 EACH	_____.	_____.
0046	455.0605 Tack Coat	396.000 GAL	_____.	_____.
0048	460.2000 Incentive Density HMA Pavement	4,210.000 DOL	1.00000	4,210.00
0050	460.6223 HMA Pavement 3 MT 58-28 S	3,916.000 TON	_____.	_____.
0052	460.6224 HMA Pavement 4 MT 58-28 S	2,668.000 TON	_____.	_____.
0054	465.0105 Asphaltic Surface	81.000 TON	_____.	_____.
0056	465.0115 Asphaltic Surface Detours	25.000 TON	_____.	_____.
0058	465.0315 Asphaltic Flumes	53.000 SY	_____.	_____.
0060	465.0520 Asphaltic Rumble Strips, Shoulder	6,260.000 LF	_____.	_____.
0062	465.0560 Asphaltic Rumble Strips, Centerline	3,130.000 LF	_____.	_____.



Proposal Schedule of Items

Proposal ID: 20240109005 Project(s): 5880-01-70

Federal ID(s): WISC 2024110

SECTION: 0001 Contract Items

Alt Set ID: Alt Mbr ID:

Proposal Line Number	Item ID Description	Approximate Quantity and Units	Unit Price	Bid Amount
0064	520.8000 Concrete Collars for Pipe	11.000 EACH	_____.	_____.
0066	521.1042 Apron Endwalls for Culvert Pipe Steel 42-Inch	4.000 EACH	_____.	_____.
0068	521.3142 Culvert Pipe Corrugated Steel 42-Inch	144.000 LF	_____.	_____.
0070	522.2638 Apron Endwalls for Culvert Pipe Reinforced Concrete Horizontal Elliptical 38x60-Inch	2.000 EACH	_____.	_____.
0072	601.0411 Concrete Curb & Gutter 30-Inch Type D	399.000 LF	_____.	_____.
0074	601.0557 Concrete Curb & Gutter 6-Inch Sloped 36-Inch Type D	1,695.000 LF	_____.	_____.
0076	602.0405 Concrete Sidewalk 4-Inch	7,660.000 SF	_____.	_____.
0078	602.0810 Concrete Driveway 6-Inch	143.000 SY	_____.	_____.
0080	606.0200 Riprap Medium	24.000 CY	_____.	_____.
0084	608.0324 Storm Sewer Pipe Reinforced Concrete Class III 24-Inch	24.000 LF	_____.	_____.
0086	608.0330 Storm Sewer Pipe Reinforced Concrete Class III 30-Inch	102.000 LF	_____.	_____.
0088	608.2434 Storm Sewer Pipe Reinforced Concrete Horizontal Elliptical Class HE-IV 34x53-Inch	73.000 LF	_____.	_____.
0090	611.0530 Manhole Covers Type J	2.000 EACH	_____.	_____.
0092	611.0612 Inlet Covers Type C	1.000 EACH	_____.	_____.



Proposal Schedule of Items

Proposal ID: 20240109005 Project(s): 5880-01-70

Federal ID(s): WISC 2024110

SECTION: 0001 Contract Items

Alt Set ID: Alt Mbr ID:

Proposal Line Number	Item ID Description	Approximate Quantity and Units	Unit Price	Bid Amount
0094	611.0627 Inlet Covers Type HM	5.000 EACH	_____.	_____.
0096	611.0639 Inlet Covers Type H-S	1.000 EACH	_____.	_____.
0098	611.2004 Manholes 4-FT Diameter	1.000 EACH	_____.	_____.
0100	611.2005 Manholes 5-FT Diameter	3.000 EACH	_____.	_____.
0102	611.2006 Manholes 6-FT Diameter	1.000 EACH	_____.	_____.
0104	611.3003 Inlets 3-FT Diameter	1.000 EACH	_____.	_____.
0106	611.3230 Inlets 2x3-FT	1.000 EACH	_____.	_____.
0108	611.8110 Adjusting Manhole Covers	6.000 EACH	_____.	_____.
0110	611.8115 Adjusting Inlet Covers	2.000 EACH	_____.	_____.
0112	611.8120.S Cover Plates Temporary	5.000 EACH	_____.	_____.
0114	612.0106 Pipe Underdrain 6-Inch	2,353.000 LF	_____.	_____.
0116	612.0206 Pipe Underdrain Unperforated 6-Inch	188.000 LF	_____.	_____.
0118	612.0806 Apron Endwalls for Underdrain Reinforced Concrete 6-Inch	6.000 EACH	_____.	_____.
0120	618.0100 Maintenance and Repair of Haul Roads (project) 01. 5880-01-70	1.000 EACH	_____.	_____.
0122	619.1000 Mobilization	1.000 EACH	_____.	_____.
0124	620.0300 Concrete Median Sloped Nose	203.000 SF	_____.	_____.



Proposal Schedule of Items

Proposal ID: 20240109005 Project(s): 5880-01-70

Federal ID(s): WISC 2024110

SECTION: 0001 Contract Items

Alt Set ID: Alt Mbr ID:

Proposal Line Number	Item ID Description	Approximate Quantity and Units	Unit Price	Bid Amount
0126	624.0100 Water	495.000 MGAL	_____.	_____.
0128	625.0500 Salvaged Topsoil	18,120.000 SY	_____.	_____.
0130	627.0200 Mulching	12,837.000 SY	_____.	_____.
0132	628.1504 Silt Fence	6,060.000 LF	_____.	_____.
0134	628.1520 Silt Fence Maintenance	6,060.000 LF	_____.	_____.
0136	628.1905 Mobilizations Erosion Control	6.000 EACH	_____.	_____.
0138	628.1910 Mobilizations Emergency Erosion Control	4.000 EACH	_____.	_____.
0140	628.2002 Erosion Mat Class I Type A	160.000 SY	_____.	_____.
0142	628.2004 Erosion Mat Class I Type B	525.000 SY	_____.	_____.
0144	628.2023 Erosion Mat Class II Type B	1,050.000 SY	_____.	_____.
0146	628.7005 Inlet Protection Type A	7.000 EACH	_____.	_____.
0148	628.7010 Inlet Protection Type B	2.000 EACH	_____.	_____.
0150	628.7015 Inlet Protection Type C	11.000 EACH	_____.	_____.
0152	628.7504 Temporary Ditch Checks	141.000 LF	_____.	_____.
0154	628.7555 Culvert Pipe Checks	41.000 EACH	_____.	_____.
0156	628.7570 Rock Bags	300.000 EACH	_____.	_____.



Proposal Schedule of Items

Proposal ID: 20240109005 Project(s): 5880-01-70

Federal ID(s): WISC 2024110

SECTION: 0001 Contract Items

Alt Set ID: Alt Mbr ID:

Proposal Line Number	Item ID Description	Approximate Quantity and Units	Unit Price	Bid Amount
0158	629.0210 Fertilizer Type B	13.000 CWT	_____.	_____.
0160	630.0110 Seeding Mixture No. 10	148.000 LB	_____.	_____.
0162	630.0180 Seeding Mixture No. 80	22.000 LB	_____.	_____.
0164	630.0200 Seeding Temporary	29.000 LB	_____.	_____.
0166	630.0500 Seed Water	410.000 MGAL	_____.	_____.
0168	633.5200 Markers Culvert End	4.000 EACH	_____.	_____.
0170	634.0614 Posts Wood 4x6-Inch X 14-FT	14.000 EACH	_____.	_____.
0172	634.0616 Posts Wood 4x6-Inch X 16-FT	19.000 EACH	_____.	_____.
0174	634.0618 Posts Wood 4x6-Inch X 18-FT	2.000 EACH	_____.	_____.
0176	637.2210 Signs Type II Reflective H	204.500 SF	_____.	_____.
0178	637.2230 Signs Type II Reflective F	101.750 SF	_____.	_____.
0180	638.2602 Removing Signs Type II	34.000 EACH	_____.	_____.
0182	638.3000 Removing Small Sign Supports	35.000 EACH	_____.	_____.
0184	642.5401 Field Office Type D	1.000 EACH	_____.	_____.
0186	643.0300 Traffic Control Drums	1,225.000 DAY	_____.	_____.
0188	643.0410 Traffic Control Barricades Type II	125.000 DAY	_____.	_____.



Proposal Schedule of Items

Proposal ID: 20240109005 Project(s): 5880-01-70

Federal ID(s): WISC 2024110

SECTION: 0001 Contract Items

Alt Set ID: Alt Mbr ID:

Proposal Line Number	Item ID Description	Approximate Quantity and Units	Unit Price	Bid Amount
0190	643.0420 Traffic Control Barricades Type III	2,651.000 DAY	_____.	_____.
0192	643.0705 Traffic Control Warning Lights Type A	3,375.000 DAY	_____.	_____.
0194	643.0715 Traffic Control Warning Lights Type C	350.000 DAY	_____.	_____.
0196	643.0900 Traffic Control Signs	32,618.000 DAY	_____.	_____.
0198	643.0910 Traffic Control Covering Signs Type I	10.000 EACH	_____.	_____.
0200	643.0920 Traffic Control Covering Signs Type II	66.000 EACH	_____.	_____.
0202	643.1000 Traffic Control Signs Fixed Message	177.000 SF	_____.	_____.
0204	643.1050 Traffic Control Signs PCMS	28.000 DAY	_____.	_____.
0206	643.3180 Temporary Marking Line Removable Tape 6-Inch	520.000 LF	_____.	_____.
0208	643.3280 Temporary Marking Line Removable Tape 10-Inch	810.000 LF	_____.	_____.
0210	643.5000 Traffic Control	1.000 EACH	_____.	_____.
0212	645.0111 Geotextile Type DF Schedule A	1,320.000 SY	_____.	_____.
0214	645.0120 Geotextile Type HR	90.000 SY	_____.	_____.
0216	645.0220 Geogrid Type SR	27,000.000 SY	_____.	_____.
0218	646.2020 Marking Line Epoxy 6-Inch	3,607.000 LF	_____.	_____.



Proposal Schedule of Items

Proposal ID: 20240109005 Project(s): 5880-01-70

Federal ID(s): WISC 2024110

SECTION: 0001 Contract Items

Alt Set ID: Alt Mbr ID:

Proposal Line Number	Item ID Description	Approximate Quantity and Units	Unit Price	Bid Amount
0220	646.2040 Marking Line Grooved Wet Ref Epoxy 6-Inch	16,618.000 LF	_____.	_____.
0222	646.4040 Marking Line Grooved Wet Ref Epoxy 10-Inch	39.000 LF	_____.	_____.
0224	646.5020 Marking Arrow Epoxy	2.000 EACH	_____.	_____.
0226	646.5520 Marking Outfall Epoxy	5.000 EACH	_____.	_____.
0228	646.7120 Marking Diagonal Epoxy 12-Inch	25.000 LF	_____.	_____.
0230	648.0100 Locating No-Passing Zones	0.600 MI	_____.	_____.
0232	650.4000 Construction Staking Storm Sewer	8.000 EACH	_____.	_____.
0234	650.4500 Construction Staking Subgrade	5,332.000 LF	_____.	_____.
0236	650.5000 Construction Staking Base	5,332.000 LF	_____.	_____.
0238	650.5500 Construction Staking Curb Gutter and Curb & Gutter	2,086.000 LF	_____.	_____.
0240	650.6000 Construction Staking Pipe Culverts	3.000 EACH	_____.	_____.
0242	650.9500 Construction Staking Sidewalk (project) 01. 5880-01-70	1.000 EACH	_____.	_____.
0244	650.9911 Construction Staking Supplemental Control (project) 01. 5880-01-70	1.000 EACH	_____.	_____.
0246	650.9920 Construction Staking Slope Stakes	5,332.000 LF	_____.	_____.
0248	690.0150 Sawing Asphalt	286.000 LF	_____.	_____.



Proposal Schedule of Items

Proposal ID: 20240109005 Project(s): 5880-01-70

Federal ID(s): WISC 2024110

SECTION: 0001 Contract Items

Alt Set ID: Alt Mbr ID:

Proposal Line Number	Item ID Description	Approximate Quantity and Units	Unit Price	Bid Amount
0250	690.0250 Sawing Concrete	447.000 LF	_____.	_____.
0252	740.0440 Incentive IRI Ride	10,670.000 DOL	1.00000	10,670.00
0254	ASP.1T0A On-the-Job Training Apprentice at \$5.00/HR	450.000 HRS	5.00000	2,250.00
0256	ASP.1T0G On-the-Job Training Graduate at \$5.00/HR	300.000 HRS	5.00000	1,500.00
0258	SPV.0060 Special 01. Inlets 9-FT Diameter	1.000 EACH	_____.	_____.
0260	SPV.0060 Special 02. Adjusting Water Valve Boxes	5.000 EACH	_____.	_____.
0262	SPV.0090 Special 01. Culvert Pipe Reinforced Concrete Horizontal Elliptical Class HE-IV 38x60-Inc	52.000 LF	_____.	_____.
0264	SPV.0090 Special 02. Watermain Insulation	1,129.000 LF	_____.	_____.
0266	SPV.0180 Special 01. Weed Free Mulch	3,570.000 SY	_____.	_____.
0268	608.3012 Storm Sewer Pipe Class III-A 12-Inch	48.000 LF	_____.	_____.
Section: 0001			Total:	_____.
			Total Bid:	_____.

