



Wisconsin Department of Transportation

Division of Transportation Systems Development

Bureau of Project Development
4822 Madison Yards Way, 4th Floor South
Madison, WI 53705

Telephone: (608) 266-1631
Facsimile (FAX): (608) 266-8459

January 30, 2024

NOTICE TO ALL CONTRACTORS:

Proposal #28: 6767-01-71, WISC 2024246
V Plover, CTH B
Wisconsin Ave to Hoover Ave
CTH B
Portage County

6767-02-71, WISC 2024247
V Plover, CTH B
Hoover Ave to IH 39 Interchange
CTH B
Portage County

Letting of February 13, 2024

This is Addendum No. 02, which provides for the following:

Schedule of Items:

Revised Bid Item Quantities					
Bid Item	Item Description	Unit	Old Quantity	Revised Quantity	Proposal Total
602.0405	Concrete Sidewalk 4-Inch	SF	2,800	10,750	11,000
602.2400	Concrete Safety Islands *	SF	5,150	0	5,150

* There is no quantity change for Concrete Safety Islands. Part of the quantity was to be shown on the second project ID.

Plan Sheets:

Revised Plan Sheets	
Plan Sheet	Plan Sheet Title (brief description of changes to sheet)
37 - 48	Plan Details (Keynotes and leader notes updated for Concrete Safety Islands items)
173	Miscellaneous Quantities (Concrete Safety Islands and Sidewalk Updates)

Schedule of Items

Attached, dated January 30, 2024, are the revised Schedule of Items Pages 3 and 4.

Plan Sheets

The following 8½ x 11-inch sheets are attached and made part of the plans for this proposal:

Revised: 37 - 48 and 173.

The responsibility for notifying potential subcontractors and suppliers of these changes remains with the prime contractor.

Sincerely,

Mike Coleman

Proposal Development Specialist
Proposal Management Section

END OF ADDENDUM

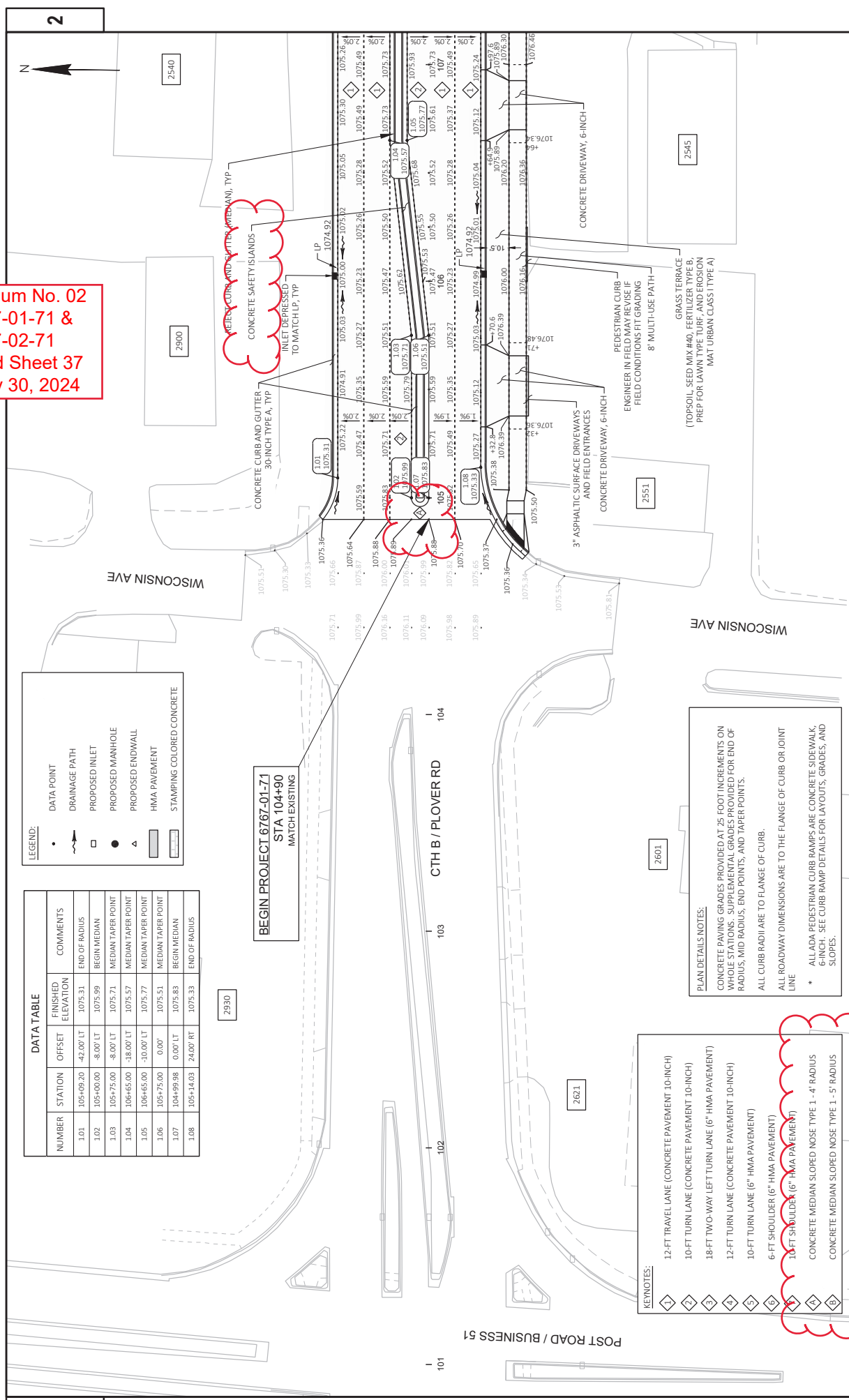
Addendum No. 02
 ID 6767-01-71 &
 ID 6767-02-71
 Revised Sheet 37
 January 30, 2024

NUMBER	STATION	OFFSET	FINISHED ELEVATION	COMMENTS
1.01	105+09.20	-42.00' LT	1075.31	END OF RADIUS
1.02	105+00.00	-8.00' LT	1075.99	BEGIN MEDIAN
1.03	105+75.00	-8.00' LT	1075.71	MEDIAN TAPER POINT
1.04	106+65.00	-18.00' LT	1075.57	MEDIAN TAPER POINT
1.05	106+65.00	-10.00' LT	1075.77	MEDIAN TAPER POINT
1.06	105+75.00	0.00'	1075.51	MEDIAN TAPER POINT
1.07	104+99.98	0.00' LT	1075.83	BEGIN MEDIAN
1.08	105+14.03	24.00' RT	1075.33	END OF RADIUS

LEGEND:

- DATA POINT
- DRAINAGE PATH
- PROPOSED INLET
- ◐ PROPOSED MANHOLE
- ◑ PROPOSED ENDWALL
- ▭ HMA PAVEMENT
- ▨ STAMPING COLORED CONCRETE

BEGIN PROJECT 6767-01-71
 STA 104+90
 MATCH EXISTING



KEYNOTES:

- 1 12-FT TRAVEL LANE (CONCRETE PAVEMENT 10-INCH)
- 2 10-FT TURN LANE (CONCRETE PAVEMENT 10-INCH)
- 3 18-FT TWO-WAY LEFT TURN LANE (6" HMA PAVEMENT)
- 4 12-FT TURN LANE (CONCRETE PAVEMENT 10-INCH)
- 5 10-FT TURN LANE (6" HMA PAVEMENT)
- 6 6-FT SHOULDER (6" HMA PAVEMENT)
- 7 10-FT SHOULDER (6" HMA PAVEMENT)
- 8 CONCRETE MEDIAN SLOPED NOSE TYPE 1 - 4' RADIUS
- 9 CONCRETE MEDIAN SLOPED NOSE TYPE 1 - 5' RADIUS

PLAN DETAILS NOTES:

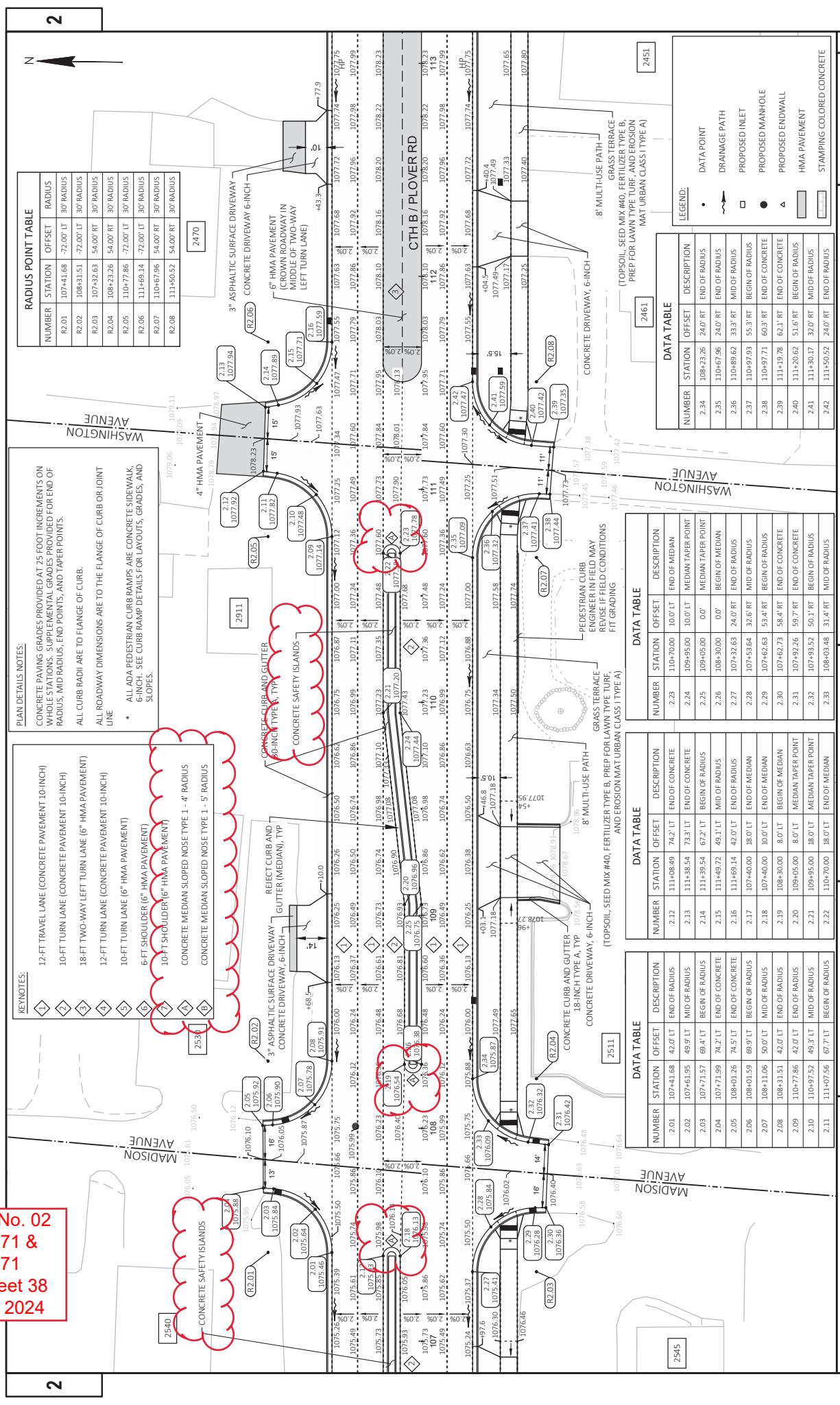
CONCRETE PAVING GRADES PROVIDED AT 25 FOOT INCREMENTS ON WHOLE STATIONS. SUPPLEMENTAL GRADES PROVIDED FOR END OF RADIUS, MID RADIUS, END POINTS, AND TAPER POINTS.

ALL CURB RADII ARE TO FLANGE OF CURB.

ALL ROADWAY DIMENSIONS ARE TO THE FLANGE OF CURB OR JOINT LINE

- * ALL ADA PEDESTRIAN CURB RAMPS ARE CONCRETE SIDEWALK, 6-INCH. SEE CURB RAMP DETAILS FOR LAYOUTS, GRADES, AND SLOPES.

Addendum No. 02
 ID 6767-01-71 &
 ID 6767-02-71
 Revised Sheet 38
 January 30, 2024



RADIUS POINT TABLE

NUMBER	STATION	OFFSET	RADIUS
R2.01	10741.68	72.00' LT	30' RADIUS
R2.02	10893.51	72.00' LT	30' RADIUS
R2.03	10742.63	54.00' RT	30' RADIUS
R2.04	108423.26	54.00' RT	30' RADIUS
R2.05	110477.86	72.00' LT	30' RADIUS
R2.06	111468.14	72.00' LT	30' RADIUS
R2.07	110467.96	54.00' RT	30' RADIUS
R2.08	111450.52	54.00' RT	30' RADIUS

PLAN DETAILS NOTES:

CONCRETE PAVING GRADES PROVIDED AT 25-FOOT INCREMENTS ON WHOLE STATIONS. SUPPLEMENTAL GRADES PROVIDED FOR END OF RADIUS, MID RADIUS, END POINTS, AND TAPER POINTS. ALL CURB RADI ARE TO FLANGE OF CURB.

ALL ROADWAY DIMENSIONS ARE TO THE FLANGE OF CURB OR JOINT LINE

* ALL ADA PEDESTRIAN CURB RAMPS ARE CONCRETE SIDEWALK, 6-INCH. CURB RAMP DETAILS FOR LAYOUTS, GRADES, AND SLOPES.

- KEYNOTES:**
- 1 12-FT TRAVEL LANE (CONCRETE PAVEMENT 10-INCH)
 - 2 10-FT TURN LANE (CONCRETE PAVEMENT 10-INCH)
 - 3 18-FT TWO-WAY LEFT TURN LANE (6" HMA PAVEMENT)
 - 4 12-FT TURN LANE (CONCRETE PAVEMENT 10-INCH)
 - 5 10-FT TURN LANE (6" HMA PAVEMENT)
 - 6 6-FT SHOULDER (6" HMA PAVEMENT)
 - 7 10-FT SHOULDER (6" HMA PAVEMENT)
 - 8 CONCRETE MEDIUM SLOPED NOSE TYPE 1 - 4' RADIUS
 - 9 CONCRETE MEDIUM SLOPED NOSE TYPE 1 - 5' RADIUS

DATA TABLE

NUMBER	STATION	OFFSET	DESCRIPTION
2.34	108423.26	240' RT	END OF RADIUS
2.35	110467.96	240' RT	END OF RADIUS
2.36	110489.62	33.3' RT	MID OF RADIUS
2.37	110497.93	55.3' RT	BEGIN OF RADIUS
2.38	110497.71	60.3' RT	END OF CONCRETE
2.39	111419.78	62.1' RT	END OF CONCRETE
2.40	111420.02	51.6' RT	BEGIN OF RADIUS
2.41	111430.17	32.0' RT	MID OF RADIUS
2.42	111450.52	240' RT	END OF RADIUS

DATA TABLE

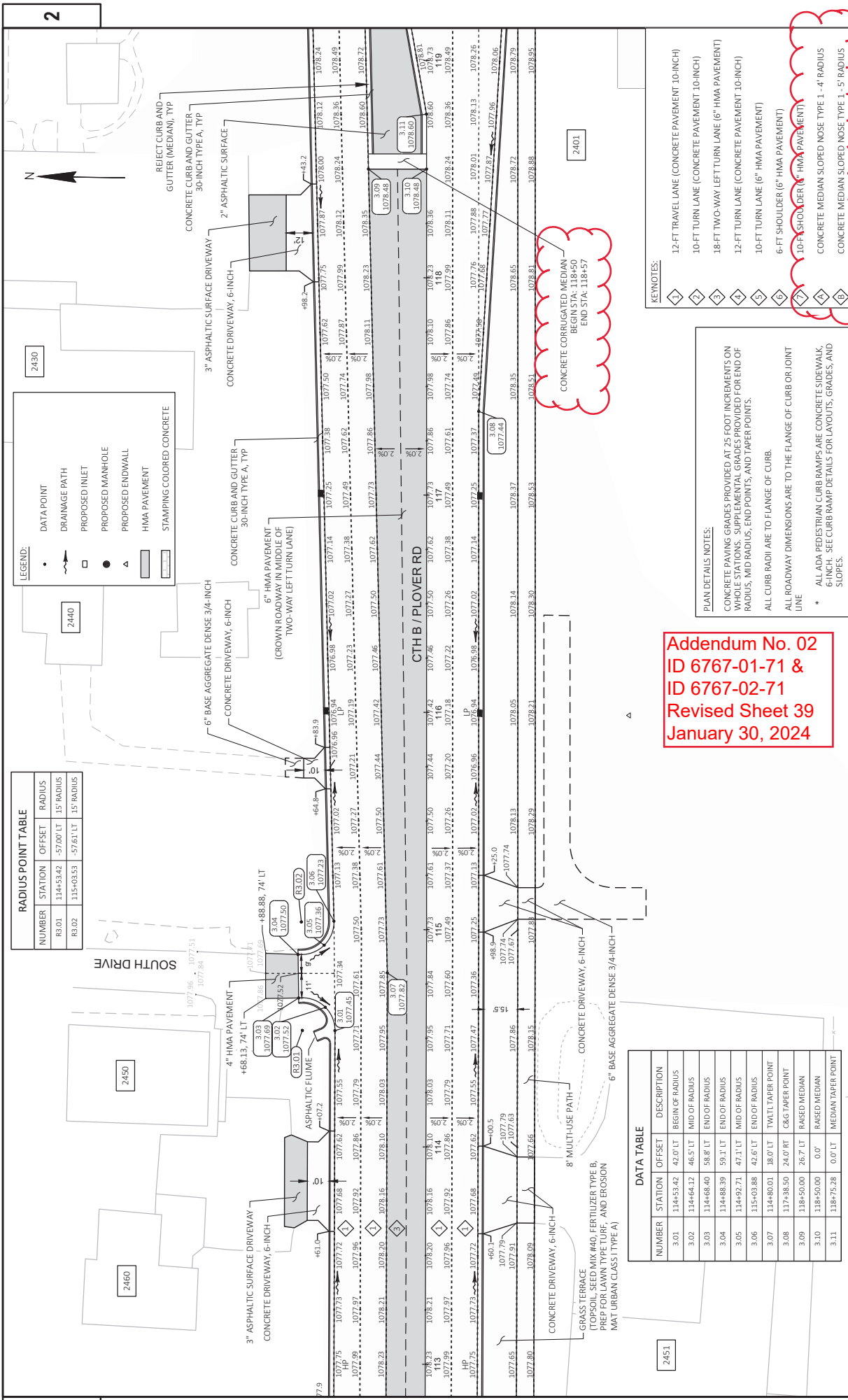
NUMBER	STATION	OFFSET	DESCRIPTION
2.28	11047000	10.0' LT	END OF MEDIAN
2.24	10949500	10.0' LT	MEDIAN TAPER POINT
2.25	10949500	0.0'	MEDIAN TAPER POINT
2.26	10843000	0.0'	BEGIN OF MEDIAN
2.27	107432.63	24.0' RT	END OF RADIUS
2.28	107453.64	32.8' RT	MID OF RADIUS
2.29	107462.63	53.4' RT	BEGIN OF RADIUS
2.30	107462.73	58.4' RT	END OF CONCRETE
2.31	107492.26	59.7' RT	END OF CONCRETE
2.32	107493.52	50.1' RT	BEGIN OF RADIUS
2.33	108403.48	31.4' RT	MID OF RADIUS

DATA TABLE

NUMBER	STATION	OFFSET	DESCRIPTION
2.12	111408.49	74.2' LT	END OF CONCRETE
2.13	111438.54	73.3' LT	END OF CONCRETE
2.14	111439.54	67.2' LT	BEGIN OF RADIUS
2.15	111449.72	49.1' LT	MID OF RADIUS
2.16	111468.14	42.0' LT	END OF RADIUS
2.17	107440.00	38.0' LT	END OF MEDIAN
2.18	107440.00	30.0' LT	END OF MEDIAN
2.19	108430.00	8.0' LT	BEGIN OF MEDIAN
2.20	109405.00	8.0' LT	END OF MEDIAN
2.21	109495.00	18.0' LT	MEDIAN TAPER POINT
2.22	110470.00	38.0' LT	END OF MEDIAN

DATA TABLE

NUMBER	STATION	OFFSET	DESCRIPTION
2.01	107441.68	42.0' LT	END OF RADIUS
2.02	107461.95	49.9' LT	MID OF RADIUS
2.03	107471.57	69.4' LT	BEGIN OF RADIUS
2.04	107471.99	74.2' LT	END OF CONCRETE
2.05	108401.26	74.5' LT	END OF CONCRETE
2.06	108401.59	69.9' LT	BEGIN OF RADIUS
2.07	108411.06	50.0' LT	MID OF RADIUS
2.08	108431.51	42.0' LT	END OF RADIUS
2.09	110477.86	42.0' LT	END OF RADIUS
2.10	110497.52	49.3' LT	MID OF RADIUS
2.11	111407.56	67.7' LT	BEGIN OF RADIUS



RADIUS POINT TABLE

NUMBER	STATION	OFFSET	RADIUS
R3.01	114+53.42	-57.00' LT	15' RADIUS
R3.02	115+03.53	-57.61' LT	15' RADIUS

LEGEND:

- DATA POINT
- DRAINAGE PATH
- PROPOSED MANHOLE
- PROPOSED ENDWALL
- ▭ HMA PAVEMENT
- ▭ STAMPING COLORED CONCRETE

DATA TABLE

NUMBER	STATION	OFFSET	DESCRIPTION
3.01	114+53.42	42.0' LT	BEGIN OF RADIUS
3.02	114+64.12	46.5' LT	MID OF RADIUS
3.03	114+68.40	58.8' LT	END OF RADIUS
3.04	114+88.39	59.1' LT	MID OF RADIUS
3.05	114+92.71	47.1' LT	END OF RADIUS
3.06	115+03.88	42.6' LT	MID OF RADIUS
3.07	114+80.01	18.0' LT	TWILT TAPER POINT
3.08	117+38.50	24.0' RT	C&G TAPER POINT
3.09	118+50.00	26.7' LT	RAISED MEDIAN
3.10	118+50.00	0.0'	RAISED MEDIAN
3.11	118+75.28	0.0' LT	MEDIAN TAPER POINT

Addendum No. 02
ID 6767-01-71 &
ID 6767-02-71
Revised Sheet 39
January 30, 2024

- KEYNOTES:**
- 1 12-FT TRAVEL LANE (CONCRETE PAVEMENT 10-INCH)
 - 2 10-FT TURN LANE (CONCRETE PAVEMENT 10-INCH)
 - 3 18-FT TWO-WAY LEFT TURN LANE (6" HMA PAVEMENT)
 - 4 12-FT TURN LANE (CONCRETE PAVEMENT 10-INCH)
 - 5 10-FT TURN LANE (6" HMA PAVEMENT)
 - 6 6-FT SHOULDER (6" HMA PAVEMENT)
 - 7 10-F' SHOULDER (6" HMA PAVEMENT)
 - 8 CONCRETE MEDIAN SLOPED NOSE TYPE 1 - 4' RADIUS
 - 9 CONCRETE MEDIAN SLOPED NOSE TYPE 1 - 5' RADIUS

PLAN DETAILS NOTES:

CONCRETE PAVING GRADES PROVIDED AT 25 FOOT INCREMENTS ON WHOLE STATIONS. SUPPLEMENTAL GRADES PROVIDED FOR END OF RADIUS, MID RADIUS, END POINTS, AND TAPER POINTS.

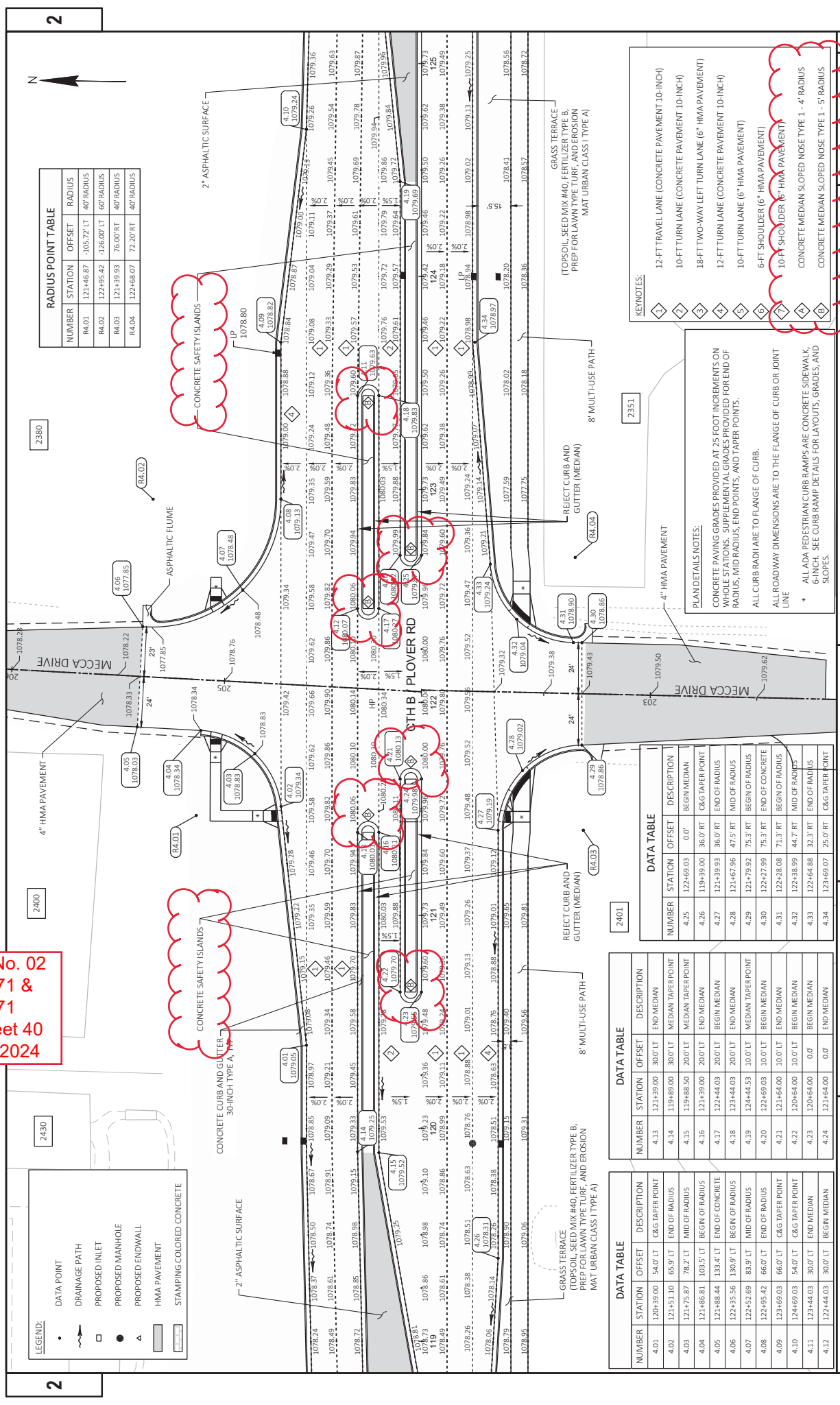
ALL CURB RADII ARE TO FLANGE OF CURB.

ALL ROADWAY DIMENSIONS ARE TO THE FLANGE OF CURB OR JOINT LINE

* ALL ADA PEDESTRIAN CURB RAMPS ARE CONCRETE SIDEWALK, CURB, SEE CURB RAMP DETAILS FOR LAYOUTS, GRADES, AND SLOPES.

CONCRETE CORRUGATED MEDIAN
 BEGIN STA: 118+50
 END STA: 118+57

Addendum No. 02
 ID 6767-01-71 &
 ID 6767-02-71
 Revised Sheet 40
 January 30, 2024



RADIUS POINT TABLE

NUMBER	STATION	OFFSET	RADIUS
R4.01	121+46.87	-105.72' LT	40' RADIUS
R4.02	122+95.42	-126.00' LT	60' RADIUS
R4.03	121+39.93	76.00' RT	40' RADIUS
R4.04	122+68.07	72.20' RT	40' RADIUS

LEGEND:

- DATA POINT
- DRAINAGE PATH
- PROPOSED INLET
- PROPOSED MANHOLE
- PROPOSED ENDWALL
- HMA PAVEMENT
- STAMPING COLORED CONCRETE

DATA TABLE

NUMBER	STATION	OFFSET	DESCRIPTION
4.01	120+39.00	54.0' LT	END MEDIUM
4.02	121+51.10	65.9' LT	MEDIUM TAPER POINT
4.03	121+75.87	78.2' LT	MID OF RADIUS
4.04	121+86.81	103.5' LT	BEGIN OF RADIUS
4.05	121+88.44	133.4' LT	END OF CONCRETE
4.06	122+35.56	130.9' LT	BEGIN OF RADIUS
4.07	122+52.69	83.9' LT	MID OF RADIUS
4.08	122+95.42	66.0' LT	END OF RADIUS
4.09	123+69.03	66.0' LT	C&G TAPER POINT
4.10	124+69.03	54.0' LT	END MEDIUM
4.11	123+44.03	30.0' LT	BEGIN MEDIUM
4.12	122+44.03	30.0' LT	END MEDIUM

DATA TABLE

NUMBER	STATION	OFFSET	DESCRIPTION
4.25	122+69.03	0.0'	BEGIN MEDIUM
4.26	119+39.00	36.0' RT	C&G TAPER POINT
4.27	121+39.93	36.0' RT	END OF RADIUS
4.28	121+67.56	47.5' RT	MID OF RADIUS
4.29	121+79.92	75.3' RT	BEGIN OF RADIUS
4.30	122+27.99	75.3' RT	END OF CONCRETE
4.31	122+28.08	71.3' RT	BEGIN OF RADIUS
4.32	122+38.99	44.7' RT	MID OF RADIUS
4.33	122+64.88	32.3' RT	END OF RADIUS
4.34	123+69.07	25.0' RT	C&G TAPER POINT

DATA TABLE

NUMBER	STATION	OFFSET	DESCRIPTION
4.35	1079.24	4.33	END OF CONCRETE
4.36	1079.24	4.33	BEGIN OF RADIUS
4.37	1079.24	4.33	MID OF RADIUS
4.38	1079.24	4.33	END OF RADIUS
4.39	1079.24	4.33	C&G TAPER POINT

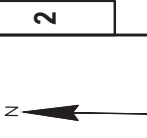
KEYNOTES:

- 12-FT TRAVEL LANE (CONCRETE PAVEMENT 10-INCH)
- 10-FT TURN LANE (CONCRETE PAVEMENT 10-INCH)
- 18-FT TWO-WAY LEFT TURN LANE (6" HMA PAVEMENT)
- 12-FT TURN LANE (CONCRETE PAVEMENT 10-INCH)
- 10-FT TURN LANE (6" HMA PAVEMENT)
- 6-FT SHOULDER (6" HMA PAVEMENT)
- 10-FT SHOULDER (6" HMA PAVEMENT)
- CONCRETE MEDIAN SLOPED NOSE TYPE 1 - 4" RADIUS
- CONCRETE MEDIAN SLOPED NOSE TYPE 1 - 5" RADIUS

PLAN DETAILS NOTES:

- CONCRETE PAVING GRADES PROVIDED AT 25 FOOT INCREMENTS ON WHOLE STATIONS. SUPPLEMENTAL GRADES PROVIDED FOR END OF RADIUS, MID RADIUS, END POINTS, AND TAPER POINTS.
- ALL CURB RADII ARE TO FLANGE OF CURB.
- ALL ROADWAY DIMENSIONS ARE TO THE FLANGE OF CURB OR JOINT LINE.
- * ALL ADA PEDESTRIAN CURB RAMP ARE CONCRETE SIDEWALK, 6-INCH SEE CURB RAMP DETAILS FOR LAYOUTS, GRADES, AND SLOPES.

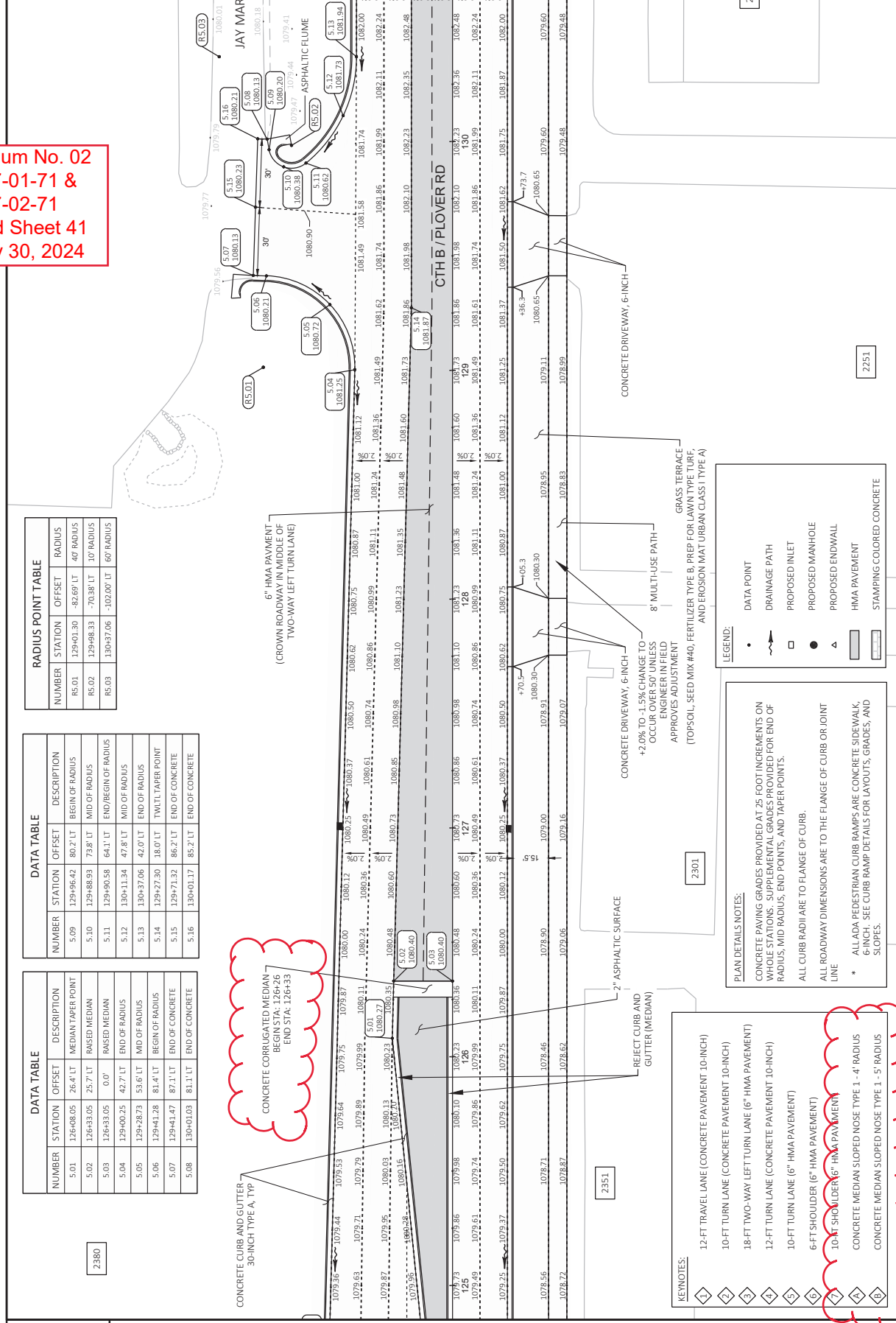
**Addendum No. 02
ID 6767-01-71 &
ID 6767-02-71
Revised Sheet 41
January 30, 2024**



NUMBER	STATION	OFFSET	RADIUS
RS.01	129+01.30	-83.69' LT	40' RADIUS
RS.02	129+98.33	-70.38' LT	10' RADIUS
RS.03	130+37.06	-102.00' LT	60' RADIUS

NUMBER	STATION	OFFSET	DESCRIPTION
5.09	129+96.42	80.2' LT	BEGIN OF RADIUS
5.10	129+88.93	73.8' LT	MID OF RADIUS
5.11	129+90.58	64.1' LT	END/BEGIN OF RADIUS
5.12	130+11.34	47.8' LT	MID OF RADIUS
5.13	130+37.06	42.0' LT	TWELF TAPER POINT
5.14	129+27.50	18.0' LT	END OF CONCRETE
5.15	129+71.32	86.2' LT	END OF CONCRETE
5.16	130+01.17	85.2' LT	END OF CONCRETE

NUMBER	STATION	OFFSET	DESCRIPTION
5.01	129+08.05	26.4' LT	MEDIAN TAPER POINT
5.02	129+33.05	25.7' LT	RAISED MEDIAN
5.03	129+33.05	0.0'	RAISED MEDIAN
5.04	129+00.23	42.7' LT	END OF RADIUS
5.05	129+28.73	53.6' LT	MID OF RADIUS
5.06	129+41.28	81.4' LT	BEGIN OF RADIUS
5.07	129+41.47	87.1' LT	END OF CONCRETE
5.08	130+01.03	81.1' LT	END OF CONCRETE



•	DATA POINT
—	DRAINAGE PATH
□	PROPOSED INLET
○	PROPOSED MANHOLE
△	PROPOSED ENDWALL
▨	HMA PAVEMENT
▩	STAMPING COLORED CONCRETE

PLAN DETAILS NOTES:
 CONCRETE PAVING GRADES PROVIDED AT 25 FOOT INCREMENTS ON VEHICLE STATIONS. SUPPLEMENTAL GRADES PROVIDED FOR END OF RADIUS, MID RADIUS, END POINTS, AND TAPER POINTS.
 ALL CURB RADII ARE TO FLANGE OF CURB.
 ALL ROADWAY DIMENSIONS ARE TO THE FLANGE OF CURB OR JOINT LINE.
 * ALL ADA PEDESTRIAN CURB RAMPS ARE CONCRETE SIDEWALK, 6-INCH. SEE CURB RAMP DETAILS FOR LAYOUTS, GRADES, AND SLOPES.

- KEYNOTES:**
- 1 12-FT TRAVEL LANE (CONCRETE PAVEMENT 10-INCH)
 - 2 10-FT TURN LANE (CONCRETE PAVEMENT 10-INCH)
 - 3 18-FT TWO-WAY LEFT TURN LANE (6" HMA PAVEMENT)
 - 4 12-FT TURN LANE (CONCRETE PAVEMENT 10-INCH)
 - 5 10-FT TURN LANE (6" HMA PAVEMENT)
 - 6 6-FT SHOULDER (6" HMA PAVEMENT)
 - 7 10-FT SHOULDER (6" HMA PAVEMENT)
 - 8 CONCRETE MEDIAN SLOPED NOSE TYPE 1 - 4' RADIUS
 - 9 CONCRETE MEDIAN SLOPED NOSE TYPE 1 - 5' RADIUS

Addendum No. 02
ID 6767-01-71 &
ID 6767-02-71
Revised Sheet 42
January 30, 2024

2110

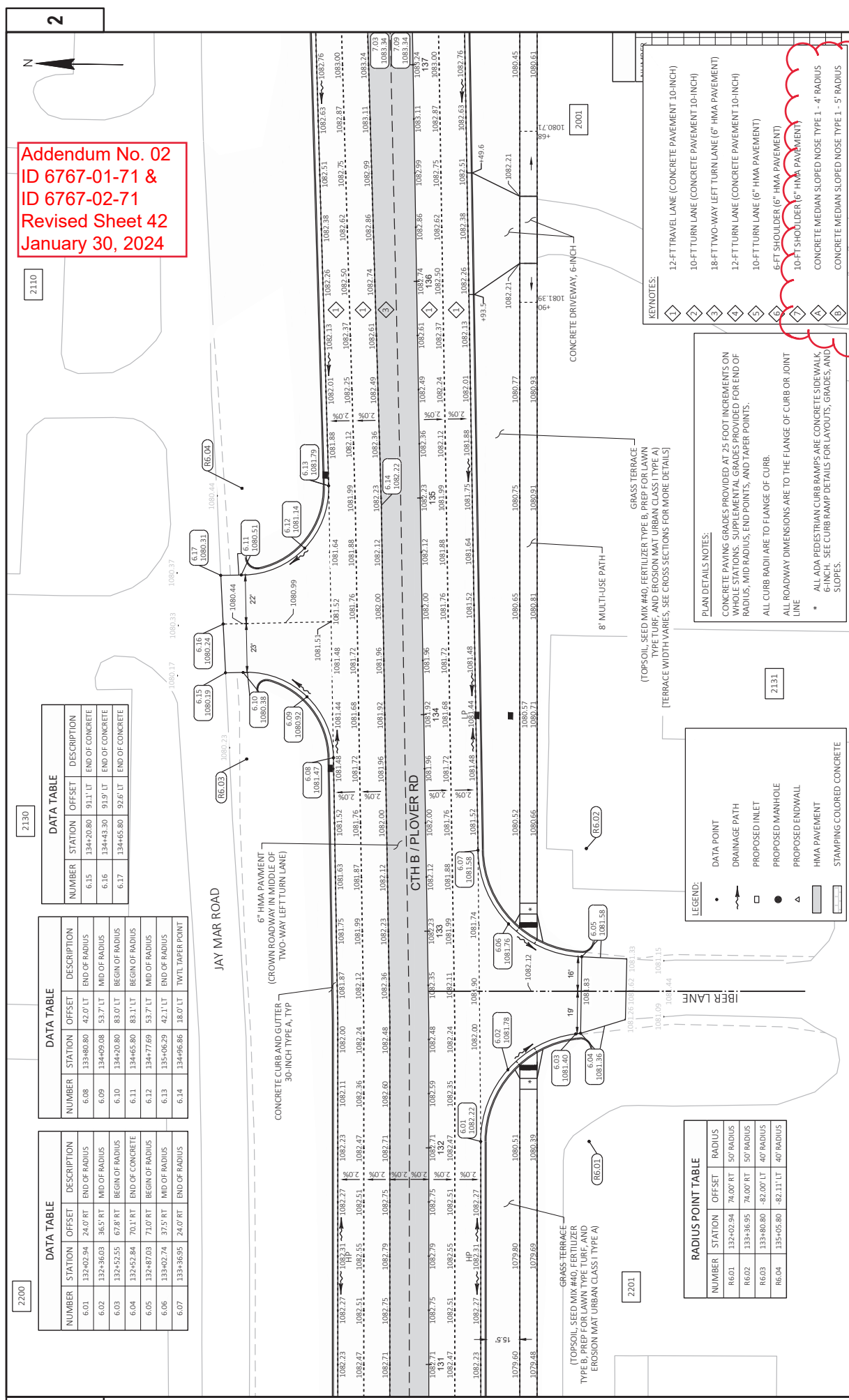
2130

2200

DATA TABLE			
NUMBER	STATION	OFFSET	DESCRIPTION
6.15	134+20.80	91.1' LT	END OF CONCRETE
6.16	134+43.30	91.9' LT	END OF CONCRETE
6.17	134+65.80	92.6' LT	END OF CONCRETE

DATA TABLE			
NUMBER	STATION	OFFSET	DESCRIPTION
6.08	133+46.80	42.0' LT	END OF RADIUS
6.09	134+09.08	53.7' LT	MID OF RADIUS
6.10	134+20.80	83.0' LT	BEGIN OF RADIUS
6.11	134+65.80	83.1' LT	BEGIN OF RADIUS
6.12	134+77.69	53.7' LT	MID OF RADIUS
6.13	135+06.29	42.1' LT	END OF RADIUS
6.14	134+96.86	18.0' LT	TWTL TAPER POINT

DATA TABLE			
NUMBER	STATION	OFFSET	DESCRIPTION
6.01	132+02.94	24.0' RT	END OF RADIUS
6.02	132+36.03	36.5' RT	MID OF RADIUS
6.03	132+52.55	67.8' RT	BEGIN OF RADIUS
6.04	132+52.84	70.1' RT	END OF CONCRETE
6.05	132+87.03	71.0' RT	BEGIN OF RADIUS
6.06	133+02.74	37.5' RT	MID OF RADIUS
6.07	133+36.95	24.0' RT	END OF RADIUS



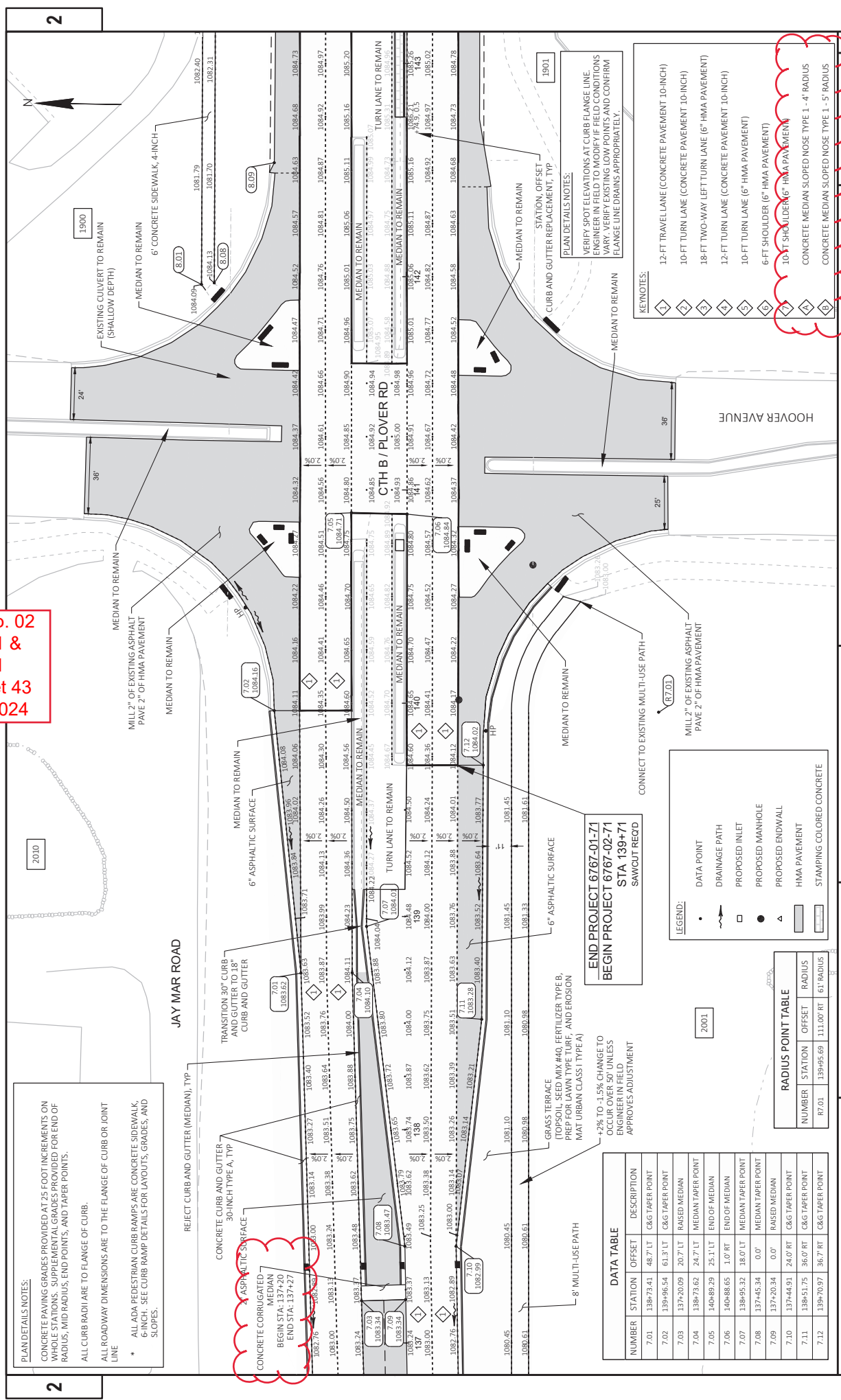
PLAN DETAILS NOTES:
 CONCRETE PAVING GRADES PROVIDED AT 25 FOOT INCREMENTS ON WHOLE STATIONS. SUPPLEMENTAL GRADES PROVIDED FOR END OF RADIUS, MID RADIUS, END POINTS, AND TAPER POINTS.
 ALL CURB RADII ARE TO FLANGE OF CURB.
 ALL ROADWAY DIMENSIONS ARE TO THE FLANGE OF CURB OR JOINT LINE
 * ALL ADA PEDESTRIAN CURB RAMPS ARE CONCRETE SIDEWALK 6-INCH. SEE CURB RAMP DETAILS FOR LAYOUTS, GRADES, AND SLOPES.

KEYNOTES:
 1 12-FT TRAVEL LANE (CONCRETE PAVEMENT 10-INCH)
 2 10-FT TURN LANE (CONCRETE PAVEMENT 10-INCH)
 3 18-FT TWO-WAY LEFT TURN LANE (6" HMA PAVEMENT)
 4 12-FT TURN LANE (CONCRETE PAVEMENT 10-INCH)
 5 10-FT TURN LANE (6" HMA PAVEMENT)
 6 5-FT SHOULDER (6" HMA PAVEMENT)
 7 10-FT SHOULDER (6" HMA PAVEMENT)
 8 CONCRETE MEDIAN SLOPED NOSE TYPE 1 - 4' RADIUS
 9 CONCRETE MEDIAN SLOPED NOSE TYPE 1 - 5' RADIUS

LEGEND:
 • DATA POINT
 — DRAINAGE PATH
 □ PROPOSED INLET
 ● PROPOSED MANHOLE
 ▲ PROPOSED ENDWALL
 ▭ HMA PAVEMENT
 ▨ STAMPING COLORED CONCRETE

RADIUS POINT TABLE			
NUMBER	STATION	OFFSET	RADIUS
R6.01	132+02.94	74.00' RT	50' RADIUS
R6.02	133+36.95	74.00' RT	50' RADIUS
R6.03	133+46.80	82.00' LT	40' RADIUS
R6.04	135+05.80	82.11' LT	40' RADIUS

Addendum No. 02
ID 6767-01-71 &
ID 6767-02-71
Revised Sheet 43
January 30, 2024



PLAN DETAILS NOTES:
 CONCRETE PAVING GRADES PROVIDED AT 25 FOOT INCREMENTS ON WHOLE STATIONS. SUPPLEMENTAL GRADES PROVIDED FOR END OF RADIUS, MID RADIUS, END POINTS, AND TAPER POINTS.
 ALL CURB RADII ARE TO FLANGE OF CURB.
 ALL ROADWAY DIMENSIONS ARE TO THE FLANGE OF CURB OR JOINT LINE
 * ALL ADA PEDESTRIAN CURB RAMPS ARE CONCRETE SIDEWALK 6-INCH. SEE CURB RAMP DETAILS FOR LAYOUTS, GRADES, AND SLOPES.

DATA TABLE

NUMBER	STATION	OFFSET	DESCRIPTION
7.01	138+73.41	48.7' LT	C&G TAPER POINT
7.02	139+96.54	61.3' LT	C&G TAPER POINT
7.03	137+20.09	20.7' LT	RAISED MEDIAN
7.04	138+73.62	24.7' LT	MEDIAN TAPER POINT
7.05	140+89.29	25.1' LT	END OF MEDIAN
7.06	140+88.65	1.0' RT	END OF MEDIAN
7.07	138+95.32	18.0' LT	MEDIAN TAPER POINT
7.08	137+45.34	0.0'	MEDIAN TAPER POINT
7.09	137+20.34	0.0'	RAISED MEDIAN
7.10	137+44.91	24.0' RT	C&G TAPER POINT
7.11	138+51.75	36.0' RT	C&G TAPER POINT
7.12	139+70.97	36.7' RT	C&G TAPER POINT

RADIUS POINT TABLE

NUMBER	STATION	OFFSET	RADIUS
R7.01	139+95.69	111.00' RT	61' RADIUS

LEGEND:

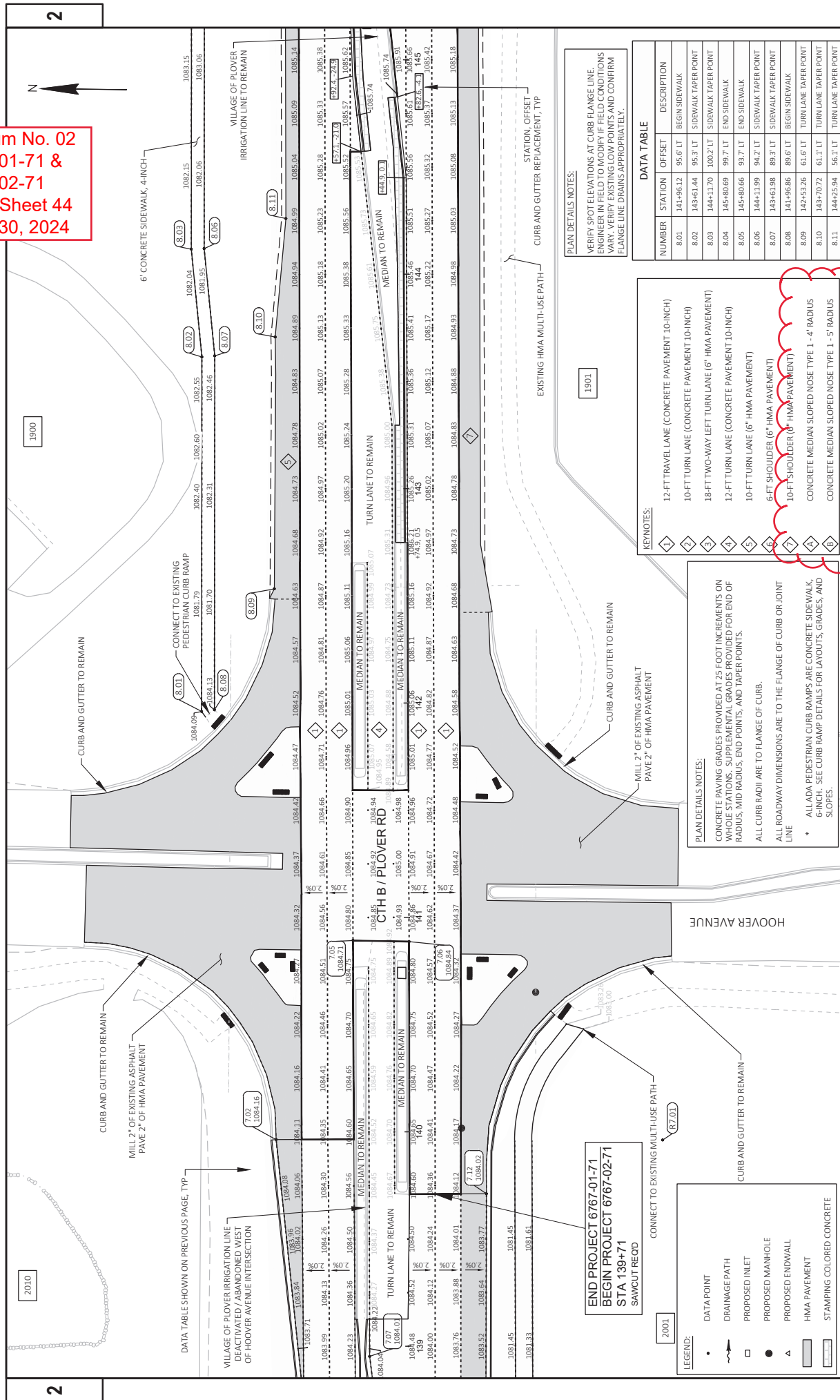
- DATA POINT
- DRAINAGE PATH
- PROPOSED INLET
- PROPOSED MANHOLE
- ▲ PROPOSED ENDWALL
- ▭ HMA PAVEMENT
- ▭ STAMPING COLORED CONCRETE

END PROJECT 6767-01-71
BEGIN PROJECT 6767-02-71
STA 139+71
SAWCUT REQD

- KEYNOTES:**
- ① 12-FT TRAVEL LANE (CONCRETE PAVEMENT 10-INCH)
 - ② 10-FT TURN LANE (CONCRETE PAVEMENT 10-INCH)
 - ③ 18-FT TWO-WAY LEFT TURN LANE (6" HMA PAVEMENT)
 - ④ 12-FT TURN LANE (CONCRETE PAVEMENT 10-INCH)
 - ⑤ 10-FT TURN LANE (6" HMA PAVEMENT)
 - ⑥ 6-FT SHOULDER (6" HMA PAVEMENT)
 - ⑦ 10-FT SHOULDER (6" HMA PAVEMENT)
 - ⑧ CONCRETE MEDIAN SLOPED NOSE TYPE 1 - 4' RADIUS
 - ⑨ CONCRETE MEDIAN SLOPED NOSE TYPE 1 - 5' RADIUS

PLAN DETAILS NOTES:
 VERIFY SPOT ELEVATIONS AT CURB FLANGE LINE. ENGINEER IN FIELD TO MODIFY IF FIELD CONDITIONS VARY. VERIFY EXISTING LOW POINTS AND CONFIRM FLANGE LINE DRAINS APPROPRIATELY.

Addendum No. 02
ID 6767-01-71 &
ID 6767-02-71
Revised Sheet 44
January 30, 2024



PLAN DETAILS NOTES:
 VERIFY ELEVATIONS AT CURB FLANGE LINE, BEGIN POINTS ON ALL TURN LANE LINES AND VARY VERIFY EXISTING LOW POINTS AND CONFIRM FLANGE LINE DRAINS APPROPRIATELY.

NUMBER	STATION	OFFSET	DESCRIPTION
8.01	141+96.12	95.6' LT	BEGIN SIDEWALK
8.02	143+61.44	95.3' LT	SIDEWALK TAPER POINT
8.03	144+111.70	100.2' LT	SIDEWALK TAPER POINT
8.04	145+80.69	99.7' LT	END SIDEWALK
8.05	145+80.66	93.7' LT	END SIDEWALK
8.06	144+11.99	94.2' LT	SIDEWALK TAPER POINT
8.07	143+61.98	89.3' LT	SIDEWALK TAPER POINT
8.08	141+96.86	89.9' LT	BEGIN SIDEWALK
8.09	142+53.26	61.6' LT	TURN LANE TAPER POINT
8.10	143+70.72	61.1' LT	TURN LANE TAPER POINT
8.11	144+25.94	56.1' LT	TURN LANE TAPER POINT

KEYNOTES:

1	12-FT TRAVEL LANE (CONCRETE PAVEMENT 10-INCH)
2	10-FT TURN LANE (CONCRETE PAVEMENT 10-INCH)
3	18-FT TWO-WAY LEFT TURN LANE (6" HMA PAVEMENT)
4	12-FT TURN LANE (CONCRETE PAVEMENT 10-INCH)
5	10-FT TURN LANE (6" HMA PAVEMENT)
6	6-FT SHOULDER (6" HMA PAVEMENT)
7	10-FT SHOULDER (6" HMA PAVEMENT)
8	CONCRETE MEDIAN SLOPED NOSE TYPE 1 - 4' RADIUS
9	CONCRETE MEDIAN SLOPED NOSE TYPE 1 - 5' RADIUS

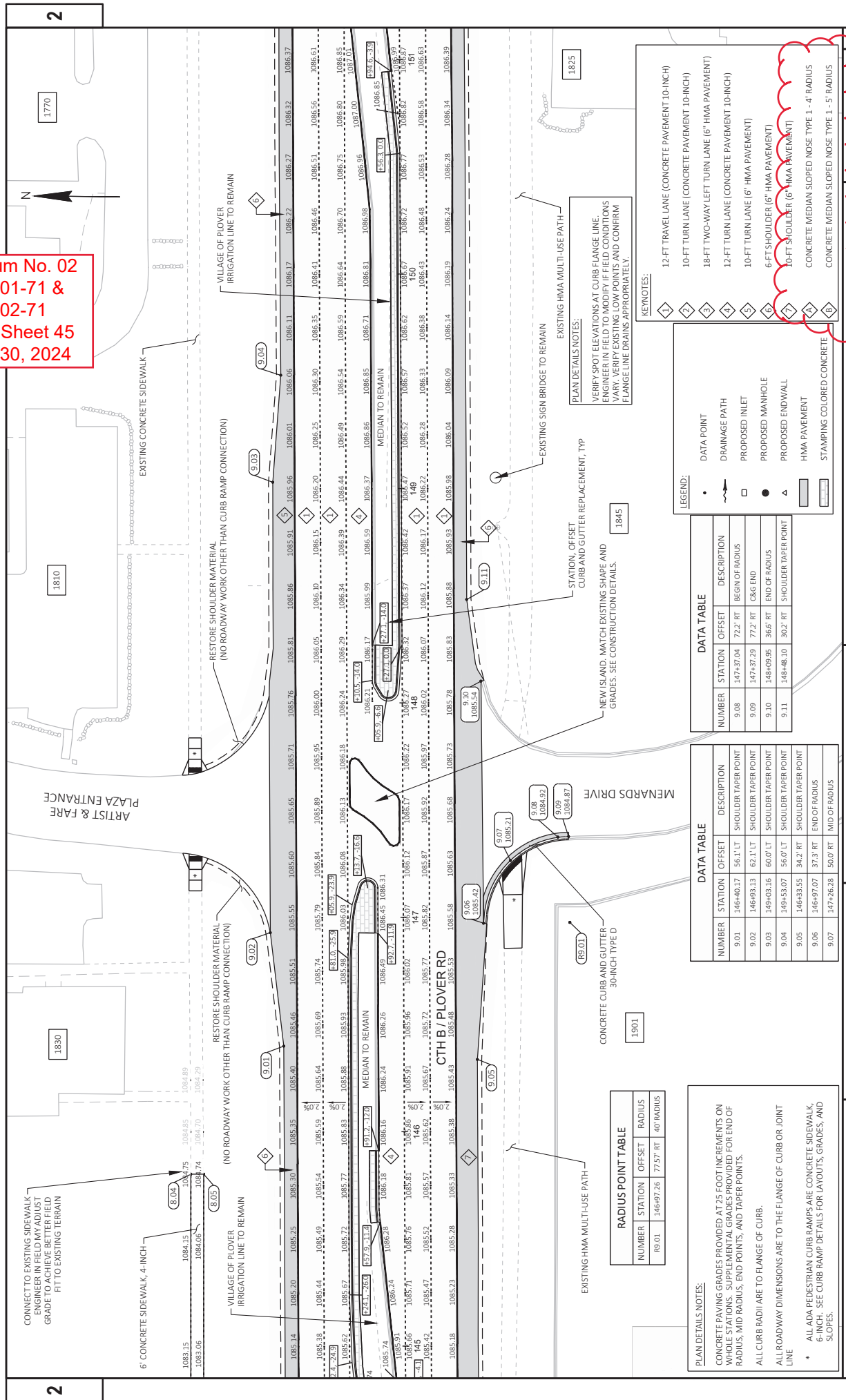
PLAN DETAILS NOTES:
 CONCRETE PAVING GRADES PROVIDED AT 25 FOOT INCREMENTS ON WHOLE STATIONS. SUPPLEMENTAL GRADES PROVIDED FOR END OF RADIUS, MID RADIUS, END POINTS, AND TAPER POINTS.
 ALL CURB RADII ARE TO FLANGE OF CURB.
 ALL ROADWAY DIMENSIONS ARE TO THE FLANGE OF CURB OR JOINT LINE
 * ALL ADA PEDESTRIAN CURB RAMPS ARE CONCRETE SIDEWALK 6-INCH. SEE CURB RAMP DETAILS FOR LAYOUTS, GRADES, AND SLOPES.

END PROJECT 6767-01-71
BEGIN PROJECT 6767-02-71
STA 139+71
SAWCUT REGD

LEGEND:

•	DATA POINT
—	DRAINAGE PATH
□	PROPOSED INLET
○	PROPOSED MANHOLE
▭	PROPOSED ENDWALL
▭	HMA PAVEMENT
▭	STAMPING COLORED CONCRETE

Addendum No. 02
ID 6767-01-71 &
ID 6767-02-71
Revised Sheet 45
January 30, 2024



NUMBER	STATION	OFFSET	DESCRIPTION
1	1085.15	0	BEGIN OF RADIUS
2	1084.75	72.2	BEGIN OF RADIUS
3	1084.06	77.2	END OF RADIUS
4	1083.06	77.2	END OF RADIUS
5	1082.75	36.6	SHOULDER TAPER POINT
6	1082.06	30.2	SHOULDER TAPER POINT
7	1081.48	30.2	SHOULDER TAPER POINT
8	1080.89	30.2	SHOULDER TAPER POINT
9	1080.30	30.2	SHOULDER TAPER POINT
10	1079.71	30.2	SHOULDER TAPER POINT
11	1079.12	30.2	SHOULDER TAPER POINT
12	1078.53	30.2	SHOULDER TAPER POINT
13	1077.94	30.2	SHOULDER TAPER POINT
14	1077.35	30.2	SHOULDER TAPER POINT
15	1076.76	30.2	SHOULDER TAPER POINT
16	1076.17	30.2	SHOULDER TAPER POINT
17	1075.58	30.2	SHOULDER TAPER POINT
18	1074.99	30.2	SHOULDER TAPER POINT
19	1074.40	30.2	SHOULDER TAPER POINT
20	1073.81	30.2	SHOULDER TAPER POINT
21	1073.22	30.2	SHOULDER TAPER POINT
22	1072.63	30.2	SHOULDER TAPER POINT
23	1072.04	30.2	SHOULDER TAPER POINT
24	1071.45	30.2	SHOULDER TAPER POINT
25	1070.86	30.2	SHOULDER TAPER POINT
26	1070.27	30.2	SHOULDER TAPER POINT
27	1069.68	30.2	SHOULDER TAPER POINT
28	1069.09	30.2	SHOULDER TAPER POINT
29	1068.50	30.2	SHOULDER TAPER POINT
30	1067.91	30.2	SHOULDER TAPER POINT
31	1067.32	30.2	SHOULDER TAPER POINT
32	1066.73	30.2	SHOULDER TAPER POINT
33	1066.14	30.2	SHOULDER TAPER POINT
34	1065.55	30.2	SHOULDER TAPER POINT
35	1064.96	30.2	SHOULDER TAPER POINT
36	1064.37	30.2	SHOULDER TAPER POINT
37	1063.78	30.2	SHOULDER TAPER POINT
38	1063.19	30.2	SHOULDER TAPER POINT
39	1062.60	30.2	SHOULDER TAPER POINT
40	1062.01	30.2	SHOULDER TAPER POINT
41	1061.42	30.2	SHOULDER TAPER POINT
42	1060.83	30.2	SHOULDER TAPER POINT
43	1060.24	30.2	SHOULDER TAPER POINT
44	1059.65	30.2	SHOULDER TAPER POINT
45	1059.06	30.2	SHOULDER TAPER POINT
46	1058.47	30.2	SHOULDER TAPER POINT
47	1057.88	30.2	SHOULDER TAPER POINT
48	1057.29	30.2	SHOULDER TAPER POINT
49	1056.70	30.2	SHOULDER TAPER POINT
50	1056.11	30.2	SHOULDER TAPER POINT
51	1055.52	30.2	SHOULDER TAPER POINT
52	1054.93	30.2	SHOULDER TAPER POINT
53	1054.34	30.2	SHOULDER TAPER POINT
54	1053.75	30.2	SHOULDER TAPER POINT
55	1053.16	30.2	SHOULDER TAPER POINT
56	1052.57	30.2	SHOULDER TAPER POINT
57	1051.98	30.2	SHOULDER TAPER POINT
58	1051.39	30.2	SHOULDER TAPER POINT
59	1050.80	30.2	SHOULDER TAPER POINT
60	1050.21	30.2	SHOULDER TAPER POINT
61	1049.62	30.2	SHOULDER TAPER POINT
62	1049.03	30.2	SHOULDER TAPER POINT
63	1048.44	30.2	SHOULDER TAPER POINT
64	1047.85	30.2	SHOULDER TAPER POINT
65	1047.26	30.2	SHOULDER TAPER POINT
66	1046.67	30.2	SHOULDER TAPER POINT
67	1046.08	30.2	SHOULDER TAPER POINT
68	1045.49	30.2	SHOULDER TAPER POINT
69	1044.90	30.2	SHOULDER TAPER POINT
70	1044.31	30.2	SHOULDER TAPER POINT
71	1043.72	30.2	SHOULDER TAPER POINT
72	1043.13	30.2	SHOULDER TAPER POINT
73	1042.54	30.2	SHOULDER TAPER POINT
74	1041.95	30.2	SHOULDER TAPER POINT
75	1041.36	30.2	SHOULDER TAPER POINT
76	1040.77	30.2	SHOULDER TAPER POINT
77	1040.18	30.2	SHOULDER TAPER POINT
78	1039.59	30.2	SHOULDER TAPER POINT
79	1039.00	30.2	SHOULDER TAPER POINT
80	1038.41	30.2	SHOULDER TAPER POINT
81	1037.82	30.2	SHOULDER TAPER POINT
82	1037.23	30.2	SHOULDER TAPER POINT
83	1036.64	30.2	SHOULDER TAPER POINT
84	1036.05	30.2	SHOULDER TAPER POINT
85	1035.46	30.2	SHOULDER TAPER POINT
86	1034.87	30.2	SHOULDER TAPER POINT
87	1034.28	30.2	SHOULDER TAPER POINT
88	1033.69	30.2	SHOULDER TAPER POINT
89	1033.10	30.2	SHOULDER TAPER POINT
90	1032.51	30.2	SHOULDER TAPER POINT
91	1031.92	30.2	SHOULDER TAPER POINT
92	1031.33	30.2	SHOULDER TAPER POINT
93	1030.74	30.2	SHOULDER TAPER POINT
94	1030.15	30.2	SHOULDER TAPER POINT
95	1029.56	30.2	SHOULDER TAPER POINT
96	1028.97	30.2	SHOULDER TAPER POINT
97	1028.38	30.2	SHOULDER TAPER POINT
98	1027.79	30.2	SHOULDER TAPER POINT
99	1027.20	30.2	SHOULDER TAPER POINT
100	1026.61	30.2	SHOULDER TAPER POINT
101	1026.02	30.2	SHOULDER TAPER POINT
102	1025.43	30.2	SHOULDER TAPER POINT
103	1024.84	30.2	SHOULDER TAPER POINT
104	1024.25	30.2	SHOULDER TAPER POINT
105	1023.66	30.2	SHOULDER TAPER POINT
106	1023.07	30.2	SHOULDER TAPER POINT
107	1022.48	30.2	SHOULDER TAPER POINT
108	1021.89	30.2	SHOULDER TAPER POINT
109	1021.30	30.2	SHOULDER TAPER POINT
110	1020.71	30.2	SHOULDER TAPER POINT
111	1020.12	30.2	SHOULDER TAPER POINT
112	1019.53	30.2	SHOULDER TAPER POINT
113	1018.94	30.2	SHOULDER TAPER POINT
114	1018.35	30.2	SHOULDER TAPER POINT
115	1017.76	30.2	SHOULDER TAPER POINT
116	1017.17	30.2	SHOULDER TAPER POINT
117	1016.58	30.2	SHOULDER TAPER POINT
118	1015.99	30.2	SHOULDER TAPER POINT
119	1015.40	30.2	SHOULDER TAPER POINT
120	1014.81	30.2	SHOULDER TAPER POINT
121	1014.22	30.2	SHOULDER TAPER POINT
122	1013.63	30.2	SHOULDER TAPER POINT
123	1013.04	30.2	SHOULDER TAPER POINT
124	1012.45	30.2	SHOULDER TAPER POINT
125	1011.86	30.2	SHOULDER TAPER POINT
126	1011.27	30.2	SHOULDER TAPER POINT
127	1010.68	30.2	SHOULDER TAPER POINT
128	1010.09	30.2	SHOULDER TAPER POINT
129	1009.50	30.2	SHOULDER TAPER POINT
130	1008.91	30.2	SHOULDER TAPER POINT
131	1008.32	30.2	SHOULDER TAPER POINT
132	1007.73	30.2	SHOULDER TAPER POINT
133	1007.14	30.2	SHOULDER TAPER POINT
134	1006.55	30.2	SHOULDER TAPER POINT
135	1005.96	30.2	SHOULDER TAPER POINT
136	1005.37	30.2	SHOULDER TAPER POINT
137	1004.78	30.2	SHOULDER TAPER POINT
138	1004.19	30.2	SHOULDER TAPER POINT
139	1003.60	30.2	SHOULDER TAPER POINT
140	1003.01	30.2	SHOULDER TAPER POINT
141	1002.42	30.2	SHOULDER TAPER POINT
142	1001.83	30.2	SHOULDER TAPER POINT
143	1001.24	30.2	SHOULDER TAPER POINT
144	1000.65	30.2	SHOULDER TAPER POINT
145	1000.06	30.2	SHOULDER TAPER POINT
146	999.47	30.2	SHOULDER TAPER POINT
147	998.88	30.2	SHOULDER TAPER POINT
148	998.29	30.2	SHOULDER TAPER POINT
149	997.70	30.2	SHOULDER TAPER POINT
150	997.11	30.2	SHOULDER TAPER POINT
151	996.52	30.2	SHOULDER TAPER POINT
152	995.93	30.2	SHOULDER TAPER POINT
153	995.34	30.2	SHOULDER TAPER POINT
154	994.75	30.2	SHOULDER TAPER POINT
155	994.16	30.2	SHOULDER TAPER POINT
156	993.57	30.2	SHOULDER TAPER POINT
157	992.98	30.2	SHOULDER TAPER POINT
158	992.39	30.2	SHOULDER TAPER POINT
159	991.80	30.2	SHOULDER TAPER POINT
160	991.21	30.2	SHOULDER TAPER POINT
161	990.62	30.2	SHOULDER TAPER POINT
162	990.03	30.2	SHOULDER TAPER POINT
163	989.44	30.2	SHOULDER TAPER POINT
164	988.85	30.2	SHOULDER TAPER POINT
165	988.26	30.2	SHOULDER TAPER POINT
166	987.67	30.2	SHOULDER TAPER POINT
167	987.08	30.2	SHOULDER TAPER POINT
168	986.49	30.2	SHOULDER TAPER POINT
169	985.90	30.2	SHOULDER TAPER POINT
170	985.31	30.2	SHOULDER TAPER POINT
171	984.72	30.2	SHOULDER TAPER POINT
172	984.13	30.2	SHOULDER TAPER POINT
173	983.54	30.2	SHOULDER TAPER POINT
174	982.95	30.2	SHOULDER TAPER POINT
175	982.36	30.2	SHOULDER TAPER POINT
176	981.77	30.2	SHOULDER TAPER POINT
177	981.18	30.2	SHOULDER TAPER POINT
178	980.59	30.2	SHOULDER TAPER POINT
179	980.00	30.2	SHOULDER TAPER POINT
180	979.41	30.2	SHOULDER TAPER POINT
181	978.82	30.2	SHOULDER TAPER POINT
182	978.23	30.2	SHOULDER TAPER POINT
183	977.64	30.2	SHOULDER TAPER POINT
184	977.05	30.2	SHOULDER TAPER POINT
185	976.46	30.2	SHOULDER TAPER POINT
186	975.87	30.2	SHOULDER TAPER POINT
187	975.28	30.2	SHOULDER TAPER POINT
188	974.69	30.2	SHOULDER TAPER POINT
189	974.10	30.2	SHOULDER TAPER POINT
190	973.51	30.2	SHOULDER TAPER POINT
191	972.92	30.2	SHOULDER TAPER POINT
192	972.33	30.2	SHOULDER TAPER POINT
193	971.74	30.2	SHOULDER TAPER POINT
194	971.15	30.2	SHOULDER TAPER POINT
195	970.56	30.2	SHOULDER TAPER POINT
196	969.97	30.2	SHOULDER TAPER POINT
197	969.38	30.2	SHOULDER TAPER POINT
198	968.79	30.2	SHOULDER TAPER POINT
199	968.20	30.2	SHOULDER TAPER POINT
200	967.61	30.2	SHOULDER TAPER POINT
201	967.02	30.2	SHOULDER TAPER POINT
202	966.43	30.2	SHOULDER TAPER POINT
203	965.84	30.2	SHOULDER TAPER POINT
204	965.25	30.2	SHOULDER TAPER POINT
205	964.66	30.2	SHOULDER TAPER POINT
206	964.07	30.2	SHOULDER TAPER POINT
207	963.48	30.2	SHOULDER TAPER POINT
208	962.89	30.2	SHOULDER TAPER POINT
209	962.30	30.2	SHOULDER TAPER POINT
210	961.71	30.2	SHOULDER TAPER POINT
211	961.12	30.2	SHOULDER TAPER POINT
212	960.53	30.2	SHOULDER TAPER POINT
213	959.94	30.2	SHOULDER TAPER POINT
214	959.35	30.2	SHOULDER TAPER POINT
215	958.76	30.2	SHOULDER TAPER POINT
216	958.17	30.2	SHOULDER TAPER POINT
217	957.58	30.2	SHOULDER TAPER POINT
218	956.99	30.2	SHOULDER TAPER POINT
219	956.40	30.2	SHOULDER TAPER POINT
220	955.		

LEGEND:

- DATA POINT
- DRAINAGE PATH
- PROPOSED INLET
- PROPOSED MANHOLE
- ▲ PROPOSED ENDWALL
- ▭ HMA PAVEMENT
- ▭ STAMPING COLORED CONCRETE

DATA TABLE

NUMBER	STATION	OFFSET	DESCRIPTION
10.01	153+28.21	56.1' LT	SHOULDER TAPER POINT
10.02	153+92.28	61.6' LT	END OF RADIUS
10.03	154+19.25	72.3' LT	MID OF RADIUS
10.04	154+37.77	110.0' LT	BEGIN OF RADIUS
10.05	154+37.87	114.5' LT	C&G END
10.06	154+93.41	113.4' LT	BEGIN OF RADIUS
10.07	155+05.95	78.6' LT	MID OF RADIUS
10.08	155+41.15	61.9' LT	END OF RADIUS

DATA TABLE

NUMBER	STATION	OFFSET	DESCRIPTION
10.09	156+51.90	61.2' LT	SHOULDER TAPER POINT
10.10	157+05.51	57.6' LT	SHOULDER TAPER POINT
10.11	151+30.75	30.1' RT	SHOULDER TAPER POINT
10.12	156+19.62	29.1' RT	SHOULDER TAPER POINT

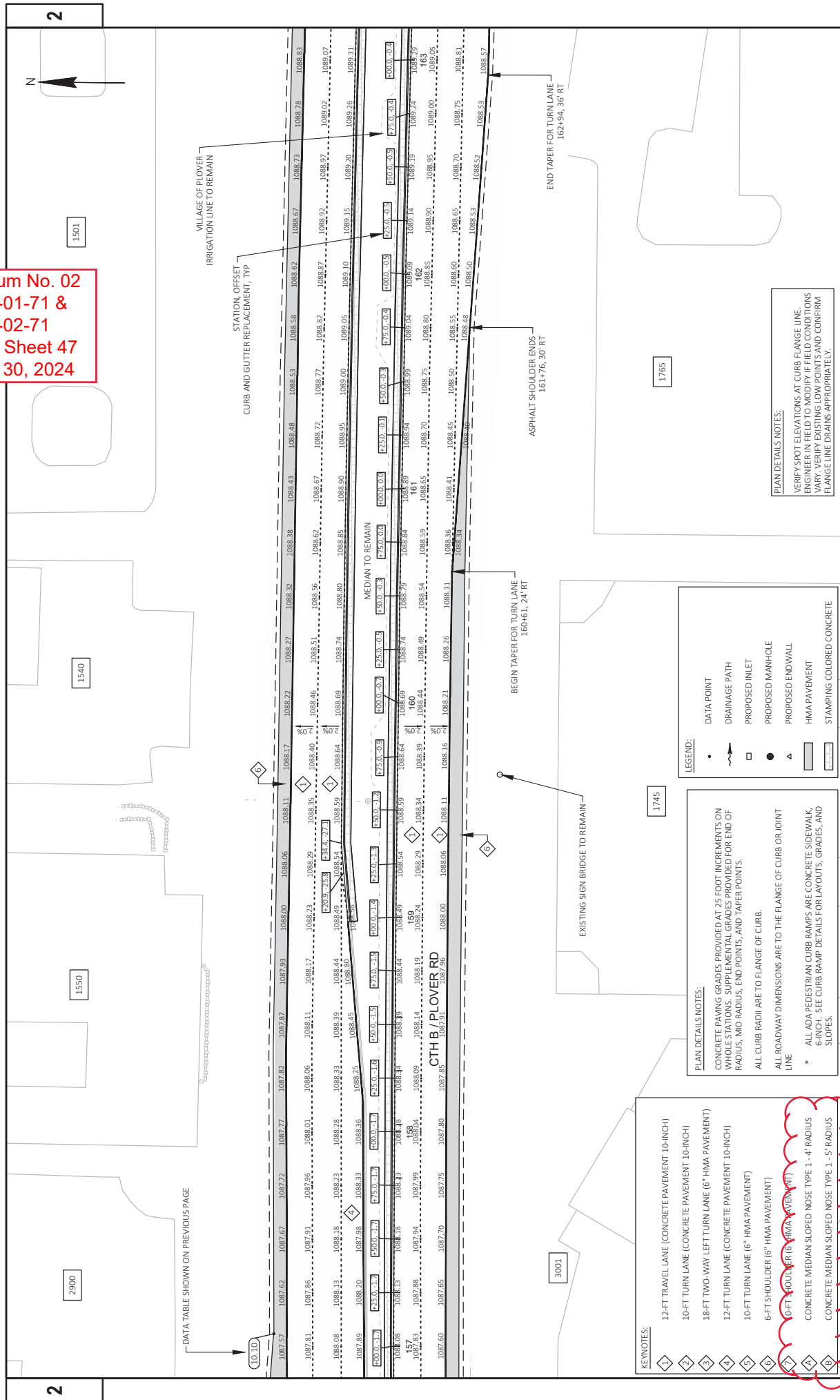
DATA TABLE

NUMBER	STATION	OFFSET	DESCRIPTION
10.03	1086.48	1087.03	1086.59
10.04	1085.57	1087.28	1087.33
10.05	1085.57	1087.33	1087.38
10.06	1085.57	1087.38	1087.42
10.07	1086.51	1087.47	1087.52
10.08	1086.51	1087.52	1087.57
10.09	1086.51	1087.57	1087.62
10.10	1087.13	1087.62	1087.66
10.11	1087.13	1087.66	1087.71
10.12	1087.13	1087.71	1087.76
10.13	1087.13	1087.76	1087.81
10.14	1087.13	1087.81	1087.86
10.15	1087.13	1087.86	1087.91
10.16	1087.13	1087.91	1087.96
10.17	1087.13	1087.96	1088.01
10.18	1087.13	1088.01	1088.06
10.19	1087.13	1088.06	1088.11
10.20	1087.13	1088.11	1088.16
10.21	1087.13	1088.16	1088.21
10.22	1087.13	1088.21	1088.26
10.23	1087.13	1088.26	1088.31
10.24	1087.13	1088.31	1088.36
10.25	1087.13	1088.36	1088.41
10.26	1087.13	1088.41	1088.46
10.27	1087.13	1088.46	1088.51
10.28	1087.13	1088.51	1088.56
10.29	1087.13	1088.56	1088.61
10.30	1087.13	1088.61	1088.66
10.31	1087.13	1088.66	1088.71
10.32	1087.13	1088.71	1088.76
10.33	1087.13	1088.76	1088.81
10.34	1087.13	1088.81	1088.86
10.35	1087.13	1088.86	1088.91
10.36	1087.13	1088.91	1088.96
10.37	1087.13	1088.96	1089.01
10.38	1087.13	1089.01	1089.06
10.39	1087.13	1089.06	1089.11
10.40	1087.13	1089.11	1089.16
10.41	1087.13	1089.16	1089.21
10.42	1087.13	1089.21	1089.26
10.43	1087.13	1089.26	1089.31
10.44	1087.13	1089.31	1089.36
10.45	1087.13	1089.36	1089.41
10.46	1087.13	1089.41	1089.46
10.47	1087.13	1089.46	1089.51
10.48	1087.13	1089.51	1089.56
10.49	1087.13	1089.56	1089.61
10.50	1087.13	1089.61	1089.66
10.51	1087.13	1089.66	1089.71
10.52	1087.13	1089.71	1089.76
10.53	1087.13	1089.76	1089.81
10.54	1087.13	1089.81	1089.86
10.55	1087.13	1089.86	1089.91
10.56	1087.13	1089.91	1089.96
10.57	1087.13	1089.96	1090.01
10.58	1087.13	1090.01	1090.06
10.59	1087.13	1090.06	1090.11
10.60	1087.13	1090.11	1090.16
10.61	1087.13	1090.16	1090.21
10.62	1087.13	1090.21	1090.26
10.63	1087.13	1090.26	1090.31
10.64	1087.13	1090.31	1090.36
10.65	1087.13	1090.36	1090.41
10.66	1087.13	1090.41	1090.46
10.67	1087.13	1090.46	1090.51
10.68	1087.13	1090.51	1090.56
10.69	1087.13	1090.56	1090.61
10.70	1087.13	1090.61	1090.66
10.71	1087.13	1090.66	1090.71
10.72	1087.13	1090.71	1090.76
10.73	1087.13	1090.76	1090.81
10.74	1087.13	1090.81	1090.86
10.75	1087.13	1090.86	1090.91
10.76	1087.13	1090.91	1090.96
10.77	1087.13	1090.96	1091.01
10.78	1087.13	1091.01	1091.06
10.79	1087.13	1091.06	1091.11
10.80	1087.13	1091.11	1091.16
10.81	1087.13	1091.16	1091.21
10.82	1087.13	1091.21	1091.26
10.83	1087.13	1091.26	1091.31
10.84	1087.13	1091.31	1091.36
10.85	1087.13	1091.36	1091.41
10.86	1087.13	1091.41	1091.46
10.87	1087.13	1091.46	1091.51
10.88	1087.13	1091.51	1091.56
10.89	1087.13	1091.56	1091.61
10.90	1087.13	1091.61	1091.66
10.91	1087.13	1091.66	1091.71
10.92	1087.13	1091.71	1091.76
10.93	1087.13	1091.76	1091.81
10.94	1087.13	1091.81	1091.86
10.95	1087.13	1091.86	1091.91
10.96	1087.13	1091.91	1091.96
10.97	1087.13	1091.96	1092.01
10.98	1087.13	1092.01	1092.06
10.99	1087.13	1092.06	1092.11
11.00	1087.13	1092.11	1092.16

DATA TABLE

NUMBER	STATION	OFFSET	DESCRIPTION
10.01	1086.37	1086.42	1086.47
10.02	1086.37	1086.47	1086.52
10.03	1086.37	1086.52	1086.57
10.04	1086.37	1086.57	1086.63
10.05	1086.37	1086.63	1086.68
10.06	1086.37	1086.68	1086.73
10.07	1086.37	1086.73	1086.78
10.08	1086.37	1086.78	1086.83
10.09	1086.37	1086.83	1086.88
10.10	1086.37	1086.88	1086.94
10.11	1086.37	1086.94	1087.00
10.12	1086.37	1087.00	1087.06
10.13	1086.37	1087.06	1087.12
10.14	1086.37	1087.12	1087.18
10.15	1086.37	1087.18	1087.24
10.16	1086.37	1087.24	1087.30
10.17	1086.37	1087.30	1087.36
10.18	1086.37	1087.36	1087.42
10.19	1086.37	1087.42	1087.48
10.20	1086.37	1087.48	1087.54
10.21	1086.37	1087.54	1087.60
10.22	1086.37	1087.60	1087.66
10.23	1086.37	1087.66	1087.72
10.24	1086.37	1087.72	1087.78
10.25	1086.37	1087.78	1087.84
10.26	1086.37	1087.84	1087.90
10.27	1086.37	1087.90	1087.96
10.28	1086.37	1087.96	1088.02
10.29	1086.37	1088.02	1088.08
10.30	1086.37	1088.08	1088.14
10.31	1086.37	1088.14	1088.20
10.32	1086.37	1088.20	1088.26
10.33	1086.37	1088.26	1088.32
10.34	1086.37	1088.32	1088.38
10.35	1086.37	1088.38	1088.44
10.36	1086.37	1088.44	1088.50
10.37	1086.37	1088.50	1088.56
10.38	1086.37	1088.56	1088.62
10.39	1086.37	1088.62	1088.68
10.40	1086.37	1088.68	1088.74
10.41	1086.37	1088.74	1088.80
10.42	1086.37	1088.80	1088.86
10.43	1086.37	1088.86	1088.92
10.44	1086.37	1088.92	1088.98
10.45	1086.37	1088.98	1089.04
10.46	1086.37	1089.04	1089.10
10.47	1086.37	1089.10	1089.16
10.48	1086.37	1089.16	1089.22
10.49	1086.37	1089.22	1089.28
10.50	1086.37	1089.28	1089.34
10.51	1086.37	1089.34	1089.40
10.52	1086.37	1089.40	1089.46
10.53	1086.37	1089.46	1089.52
10.54	1086.37	1089.52	1089.58
10.55	1086.37	1089.58	1089.64
10.56	1086.37	1089.64	1089.70
10.57	1086.37	1089.70	1089.76
10.58	1086.37	1089.76	1089.82
10.59	1086.37	1089.82	1089.88
10.60	1086.37	1089.88	1089.94
10.61	1086.37	1089.94	1090.00
10.62	1086.37	1090.00	1090.06
10.63	1086.37	1090.06	1090.12
10.64	1086.37	1090.12	1090.18
10.65	1086.37	1090.18	1090.24
10.66	1086.37	1090.24	1090.30
10.67	1086.37	1090.30	1090.36
10.68	1086.37	1090.36	1090.42
10.69	1086.37	1090.42	1090.48
10.70	1086.37	1090.48	1090.54
10.71	1086.37	1090.54	1090.60
10.72	1086.37	1090.60	1090.66
10.73	1086.37	1090.66	1090.72
10.74	1086.37	1090.72	1090.78
10.75	1086.37	1090.78	1090.84
10.76	1086.37	1090.84	1090.90
10.77	1086.37	1090.90	1090.96
10.78	1086.37	1090.96	1091.02
10.79	1086.37	1091.02	1091.08
10.80	1086.37	1091.08	1091.14
10.81	1086.37	1091.14	1091.20
10.82	1086.37	1091.20	1091.26
10.83	1086.37	1091.26	1091.32
10.84	1086.37	1091.32	1091.38
10.85	1086.37	1091.38	1091.44
10.86	1086.37	1091.44	1091.50
10.87	1086.37	1091.50	1091.56
10.88	1086.37	1091.56	1091.62
10.89	1086.37	1091.62	1091.68
10.90	1086.37	1091.68	1091.74
10.91	1086.37	1091.74	1091.80
10.92	1086.37	1091.80	1091.86
10.93	1086.37	1091.86	1091.92
10.94	1086.37	1091.92	1091.98
10.95	1086.37	1091.98	1092.04
10.96	1086.37	1092.04	1092.10
10.97	1086.37	1092.10	1092.16

Addendum No. 02
ID 6767-01-71 &
ID 6767-02-71
Revised Sheet 47
January 30, 2024



PLAN DETAILS NOTES:
 VERIFY SPOT ELEVATIONS AT CURB FLANGE LINE
 ENGINEER IN FIELD TO MODIFY IF FIELD CONDITIONS
 VARY. VERIFY EXISTING LOW POINTS AND CONFIRM
 FLANGE LINE DRAINS APPROPRIATELY.

LEGEND:

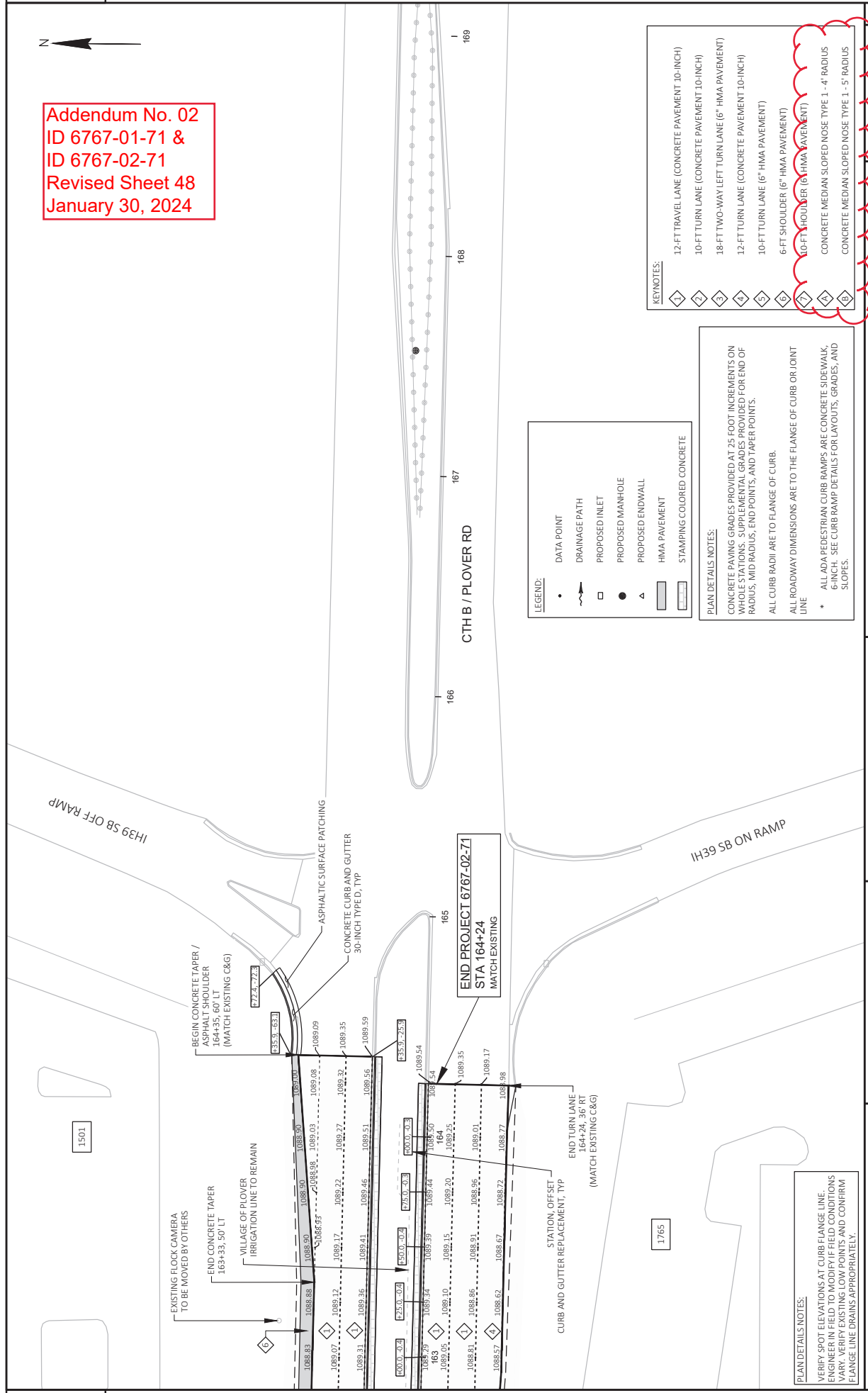
- DATA POINT
- DRAINAGE PATH
- PROPOSED INLET
- PROPOSED MANHOLE
- ▲ PROPOSED ENDWALL
- ▨ HMA PAVEMENT
- ▨ STAMPING COLORED CONCRETE

PLAN DETAILS NOTES:
 CONCRETE PAVING GRADES PROVIDED AT 25 FOOT INCREMENTS ON
 WHOLE STATIONS. SUPPLEMENTAL GRADES PROVIDED FOR END OF
 RADIUS, MID RADIUS, END POINTS, AND TAPER POINTS.
 ALL CURB RADI ARE TO FLANGE OF CURB.
 ALL ROADWAY DIMENSIONS ARE TO THE FLANGE OF CURB OR JOINT
 LINE
 * ALL ADA PEDESTRIAN CURB RAMPS ARE CONCRETE SIDEWALK
 6-INCH. SEE CURB RAMP DETAILS FOR LAYOUTS, GRADES, AND
 SLOPES.

- KEYNOTES:**
- 1 12-FT TRAVEL LANE (CONCRETE PAVEMENT 10-INCH)
 - 2 10-FT TURN LANE (CONCRETE PAVEMENT 10-INCH)
 - 3 18-FT TWO-WAY LEFT TURN LANE (6" HMA PAVEMENT)
 - 4 12-FT TURN LANE (CONCRETE PAVEMENT 10-INCH)
 - 5 10-FT TURN LANE (6" HMA PAVEMENT)
 - 6 6-FT SHOULDER (6" HMA PAVEMENT)
 - 7 6-FT SHOULDER (6" HMA PAVEMENT)
 - 8 CONCRETE MEDIUM SLOPED NOSE TYPE 1 - 4" RADIUS
 - 9 CONCRETE MEDIUM SLOPED NOSE TYPE 1 - 5" RADIUS



Addendum No. 02
ID 6767-01-71 &
ID 6767-02-71
Revised Sheet 48
January 30, 2024



LEGEND:

- DATA POINT
- DRAINAGE PATH
- PROPOSED INLET
- PROPOSED MANHOLE
- ▲ PROPOSED ENDWALL
- ▭ HMA PAVEMENT
- ▭ STAMPING COLORED CONCRETE

PLAN DETAILS NOTES:

CONCRETE PAVING GRADES PROVIDED AT 25 FOOT INCREMENTS ON 100 FT STATIONS. ALL PAVEMENT GRADATIONS PROVIDED FOR END OF RADIUS, MID RADIUS, END POINTS, AND PAPER POINTS.

ALL CURB RADII ARE TO FLANGE OF CURB.

ALL ROADWAY DIMENSIONS ARE TO THE FLANGE OF CURB OR JOINT LINE.

* ALL ADA PEDESTRIAN CURB RAMPS ARE CONCRETE SIDEWALK, 6-INCH. SEE CURB RAMP DETAILS FOR LAYOUTS, GRADES, AND SLOPES.

KEY/NOTES:

- 1 12-FT TRAVEL LANE (CONCRETE PAVEMENT 10-INCH)
- 2 10-FT TURN LANE (CONCRETE PAVEMENT 10-INCH)
- 3 18-FT TWO-WAY LEFT TURN LANE (6" HMA PAVEMENT)
- 4 12-FT TURN LANE (CONCRETE PAVEMENT 10-INCH)
- 5 10-FT TURN LANE (6" HMA PAVEMENT)
- 6 6-FT SHOULDER (6" HMA PAVEMENT)
- 7 10-FT SHOULDER (6" HMA PAVEMENT)
- 8 CONCRETE MEDIAN SLOPED NOSE TYPE 1 - 4' RADIUS
- 9 CONCRETE MEDIAN SLOPED NOSE TYPE 1 - 5' RADIUS

PROJECT NO: 6767-01-71 / 6767-02-71

HWY: CTH B

COUNTY: PORTAGE

PLAN DETAILS: CTH B

FILE NAME: P:\PROJECTS_CURB\PORTAGE\PORTAGE_C HWY DEFT\CTH B - PLOVER - 2021\AG05\SHEETS\PLAN\021200_PV021200_PL_JTDWG

DATE: 1/25/2024 2:40 PM

DESIGNER: JARED HAUBER

SCALE: 1"=40'-0"

SHEET: 48

PROJECT: WIS007/CADD/SHEET 48

CONCRETE SAFETY ISLANDS

STATION	LOCATION	602.2400 CONCRETE SAFETY ISLANDS	620.0100 CONCRETE CORRUGATED MEDIAN	620.0300 CONCRETE MEDIAN SLOPED NOSE
CATEGORY CODE 0010		SF	SF	SF
104+90 - 139+71	PROJECT	4,630	600	275
SUBTOTAL		4,630	600	275
147+50	LT	520	--	--
SUBTOTAL		520	--	--
TOTALS		5,150	600	275

STORM SEWER ITEMS

STATION	LOCATION	608.0415 STORM SEWER PIPE REINFORCED CONCRETE CLASS IV	608.0424 STORM SEWER PIPE REINFORCED CONCRETE CLASS IV	608.3615 STORM SEWER PIPE CLASS III-B	608.3624 STORM SEWER PIPE CLASS III-B
CATEGORY CODE 0010		LF	LF	LF	LF
104+90 - 139+71	PROJECT	368	368	554	480
SUBTOTAL		368	368	554	480
147+50	LT	8	8	16	72
SUBTOTAL		8	8	16	72
TOTALS		376	376	570	552

CONCRETE CURB AND GUTTER ITEMS

STATION - STATION	LOCATION	601.0409 CONCRETE CURB & GUTTER 30-INCH TYPE A	601.0411 CONCRETE CURB & GUTTER 30-INCH TYPE D	601.0405 CONCRETE CURB & GUTTER 18-INCH TYPE A	601.0600 CONCRETE CURB & GUTTER PEDESTRIAN	601.0557 CONCRETE CURB & GUTTER 6-INCH SLOPED 36-INCH TYPED
CATEGORY CODE 0010		LF	LF	LF	LF	LF
104+90 - 139+71	LT&RT	10,860	--	--	--	--
106+00 - 106+25	RT	--	--	--	25	--
109+24	RT	--	--	45	--	--
109+95 - 110+70	RT	--	--	--	75	--
121+40	LT	--	--	--	10	--
139+91 - 140+66	RT	--	--	--	40	--
UNDISTRIBUTED		--	--	--	--	75
SUBTOTAL		10,860	--	45	150	75
139+71 - 164+24	LT/RT	--	270	2,770	--	--
147+50	LT	--	--	95	--	--
SUBTOTAL		--	270	2,865	--	--
TOTALS		10,860	270	2,910	150	75

WATER

STATION - STATION	LOCATION	624.0100 MGAL	COMMENTS
104+90 - 139+71	PROJECT	70	DUST CONTROL COMPACTION
104+90 - 139+71	PROJECT	175	DUST CONTROL COMPACTION
SUBTOTAL		245	
139+71 - 164+24	PROJECT	30	DUST CONTROL COMPACTION
139+71 - 164+24	PROJECT	70	DUST CONTROL COMPACTION
SUBTOTAL		100	
TOTAL		345	

Addendum No. 02
ID 6767-01-71 &
ID 6767-02-71
Revised Sheet 173
January 30, 2024

CONCRETE SIDEWALK ITEMS

STATION - STATION	LOCATION	405.1000 STAMPING COLORED CONCRETE	602.0405 CONCRETE SIDEWALK 4-INCH	602.0415 CONCRETE SIDEWALK 6-INCH	602.0515 CURB RAMP DETECTABLE WARNING FIELD/NATURAL PATINA	602.0615 CURB RAMP DETECTABLE WARNING FIELD/RADIAL NATURAL PATINA
CATEGORY CODE 0030		CY	SF	SF	SF	SF
104+90 - 139+71	LT & RT	--	250	850	146	63
SUBTOTAL		--	250	850	146	63
139+71 - 164+24	LT & RT	--	2,800	475	54	26
139+71 - 164+24	MEDIAN	100	7,950	--	--	--
SUBTOTAL		100	10,750	475	54	26
TOTALS		100	11,000	1,325	200	89

MISCELLANEOUS QUANTITIES

PROJECT NO: 6767-01-71 / 6767-02-71	COUNTY: PORTAGE	FILE NAME: 030201_jm4.rvt	PLOT DATE: 03/20/2024	PLOT BY: gbadk	PLOT NAME: 173	PLOT SCALE: 1:1
-------------------------------------	-----------------	---------------------------	-----------------------	----------------	----------------	-----------------



Proposal Schedule of Items

Proposal ID: 20240213028 Project(s): 6767-01-71, 6767-02-71

Federal ID(s): WISC 2024246, WISC 2024247

SECTION: 0001 Contract Items

Alt Set ID: Alt Mbr ID:

Proposal Line Number	Item ID Description	Approximate Quantity and Units	Unit Price	Bid Amount
0060	460.6224 HMA Pavement 4 MT 58-28 S	3,500.000 TON	_____.	_____.
0062	465.0105 Asphaltic Surface	570.000 TON	_____.	_____.
0064	465.0110 Asphaltic Surface Patching	105.000 TON	_____.	_____.
0066	465.0120 Asphaltic Surface Driveways and Field Entrances	60.000 TON	_____.	_____.
0068	465.0125 Asphaltic Surface Temporary	255.000 TON	_____.	_____.
0070	465.0315 Asphaltic Flumes	55.000 SY	_____.	_____.
0072	520.1024 Apron Endwalls for Culvert Pipe 24-Inch	1.000 EACH	_____.	_____.
0074	520.8000 Concrete Collars for Pipe	21.000 EACH	_____.	_____.
0076	601.0405 Concrete Curb & Gutter 18-Inch Type A	2,910.000 LF	_____.	_____.
0078	601.0409 Concrete Curb & Gutter 30-Inch Type A	10,860.000 LF	_____.	_____.
0080	601.0411 Concrete Curb & Gutter 30-Inch Type D	270.000 LF	_____.	_____.
0082	601.0557 Concrete Curb & Gutter 6-Inch Sloped 36-Inch Type D	75.000 LF	_____.	_____.
0084	601.0600 Concrete Curb Pedestrian	150.000 LF	_____.	_____.
0086	602.0405 Concrete Sidewalk 4-Inch	11,000.000 SF	_____.	_____.
0088	602.0415 Concrete Sidewalk 6-Inch	1,325.000 SF	_____.	_____.



Proposal Schedule of Items

Proposal ID: 20240213028 Project(s): 6767-01-71, 6767-02-71

Federal ID(s): WISC 2024246, WISC 2024247

SECTION: 0001 Contract Items

Alt Set ID: Alt Mbr ID:

Proposal Line Number	Item ID Description	Approximate Quantity and Units	Unit Price	Bid Amount
0090	602.0515 Curb Ramp Detectable Warning Field Natural Patina	200.000 SF	_____.	_____.
0092	602.0615 Curb Ramp Detectable Warning Field Radial Natural Patina	89.000 SF	_____.	_____.
0094	602.0810 Concrete Driveway 6-Inch	1,050.000 SY	_____.	_____.
0096	602.2400 Concrete Safety Islands	5,150.000 SF	_____.	_____.
0098	606.0200 Riprap Medium	85.000 CY	_____.	_____.
0100	608.0415 Storm Sewer Pipe Reinforced Concrete Class IV 15-Inch	368.000 LF	_____.	_____.
0102	608.0424 Storm Sewer Pipe Reinforced Concrete Class IV 24-Inch	2,795.000 LF	_____.	_____.
0104	608.3615 Storm Sewer Pipe Class III-B 15-Inch	554.000 LF	_____.	_____.
0106	608.3624 Storm Sewer Pipe Class III-B 24-Inch	480.000 LF	_____.	_____.
0108	611.0420 Reconstructing Manholes	1.000 EACH	_____.	_____.
0110	611.0530 Manhole Covers Type J	4.000 EACH	_____.	_____.
0112	611.0624 Inlet Covers Type H	13.000 EACH	_____.	_____.
0114	611.0639 Inlet Covers Type H-S	9.000 EACH	_____.	_____.
0116	611.0642 Inlet Covers Type MS	5.000 EACH	_____.	_____.
0118	611.1230 Catch Basins 2x3-FT	4.000 EACH	_____.	_____.

