



Wisconsin Department of Transportation

March 7, 2024

Division of Transportation Systems Development

Bureau of Project Development
4822 Madison Yards Way, 4th Floor South
Madison, WI 53705

Telephone: (608) 266-1631
Facsimile (FAX): (608) 266-8459

NOTICE TO ALL CONTRACTORS:

Proposal #12: 2505-03-71, WISC 2024280
C Oak Creek S 13th Street
W Puetz Road to W Drexel Avenue
CTH V
Milwaukee County

Letting of March 12, 2024

This is Addendum No. 01, which provides for the following:

Special Provisions:

Revised Special Provisions	
Article No.	Description
9	Utilities

Schedule of Items:

Revised Bid Item Quantities					
Bid Item	Item Description	Unit	Proposal Total Prior to Addendum	Proposal Quantity Change (-)	Proposal Total After Addendum
521.1012	Apron Endwalls for Culvert Pipe Steel 12-Inch	Each	54	2	56
521.3112	Culvert Pipe Corrugated Steel 12-Inch	LF	750	30	780
522.1015	Apron Endwalls for Culvert Pipe Reinforced Concrete Pipe 15-Inch	Each	2	1	3
608.0315	Storm Sewer Pipe Reinforced Concrete Class III 15-Inch	LF	2000	50	2050
611.3225	Inlets 2x2.5-FT	Each	23	1	24
650.4000	Construction Staking Storm Sewer	Each	80	2	82
650.6000	Construction Staking Pipe Culverts	Each	60	2	62
SPV.0060.01	Inlet Covers Type 57	Each	49	1	50

Added Bid Item Quantities					
Bid Item	Item Description	Unit	Proposal Total Prior to Addendum	Quantity Added	Proposal Total After Addendum
203.0100	Removing Small Pipe Culverts	Each	0	60	60

Plan Sheets:

Revised Plan Sheets	
Plan Sheet	Plan Sheet Title (brief description of changes to sheet)
40	Erosion Control - Added Culvert Pipe Check and Inlet Protection to sheet
49	Storm Sewer- Added storm sewer pipes and inlet
84	Miscellaneous Quantities – Added Removing Small Pipe Culverts Table, moved Removing Concrete Pavement table to next page
85	Miscellaneous Quantities –Moved Removing Concrete Pavement table from previous page
89	Miscellaneous Quantities – Added quantities to Driveway Culverts
91-94	Miscellaneous Quantities- Added storm sewer pipe and storm sewer structures, reformatted Storm Sewer Pipe and Storm Sewer Structures tables accordingly
97	Miscellaneous Quantities - Added quantities for 628.7005 and 628.7555 and revised Undistributed quantities for each
122	Plan and Profile – Added driveway culvert

The responsibility for notifying potential subcontractors and suppliers of these changes remains with the prime contractor.

Sincerely,

Mike Coleman

Proposal Development Specialist
Proposal Management Section

ADDENDUM NO. 01
WisDOT ID 2505-03-71
March 7, 2024

Special Provisions

9. Utilities

*Replace entire section titled **WE Energies – Gas** with the following:*

WE Energies – Gas

WE Energies Gas has gas main and services throughout the project area as shown on the project plans. Adjustments to these underground facilities will be completed by the utility prior to the start of construction operations under this contract. Gas main and services not explicitly identified as being relocated have been deemed to be not in conflict and will remain in place as is. Work is anticipated to begin in November of 2023 and take 75 working days.

It is imperative that the highway contractor contact We Energies before removing any gas facilities, to verify that they have been discontinued and carry no natural gas.

We Energies Gas Dispatch #1-800-261-5325

WE Energies (Gas) has identified that the existing gas mains contain asbestos Coal-Tar Wrap from STA 10+80, 33' LT to STA 62+70, 26' LT. The gas main has been identified to be potentially in conflict with the proposed storm sewer at the following locations:

STA	OFFSET
16+65	22' LT
18+55	22' LT
20+90	22' LT
22+00	22' LT
29+48	22' LT
32+18	22' LT
34+00	23' LT
35+93	24' LT
36+75	24' LT
44+75	22' LT
45+75	22' LT
50+15	23' LT
52+32	26' LT
57+75	24' LT
60+63	25' LT

Any contaminated coated gas main segment that is in conflict with the road construction operation will be abated or removed and disposed of by WE Energies (Gas). Notify WE Energies (Gas) five (5) days prior to need for abatement/removal. Abatement/removal is estimated to take approximately 2 to 3 hours per location.

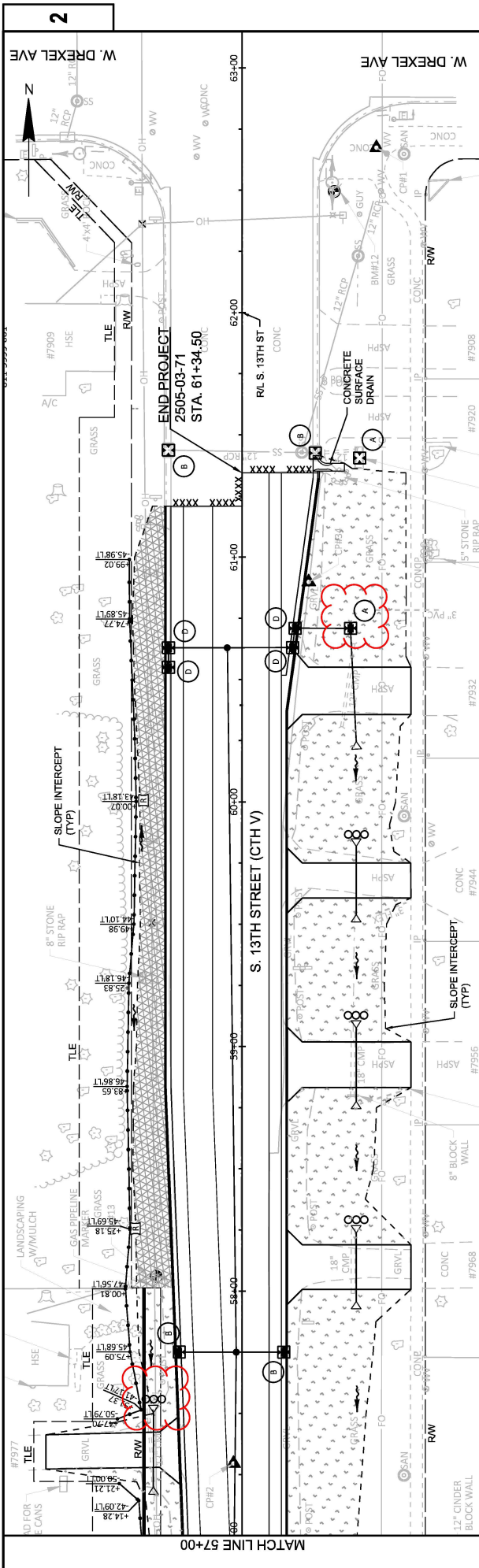
Schedule of Items

Attached, dated March 7, 2024, are the revised Schedule of Items Pages 1 - 14.

Plan Sheets

The following 8½ x 11-inch sheets are attached and made part of the plans for this proposal:
Revised: 40, 49, 84-85, 89, 91-94, 97 and 122.

END OF ADDENDUM

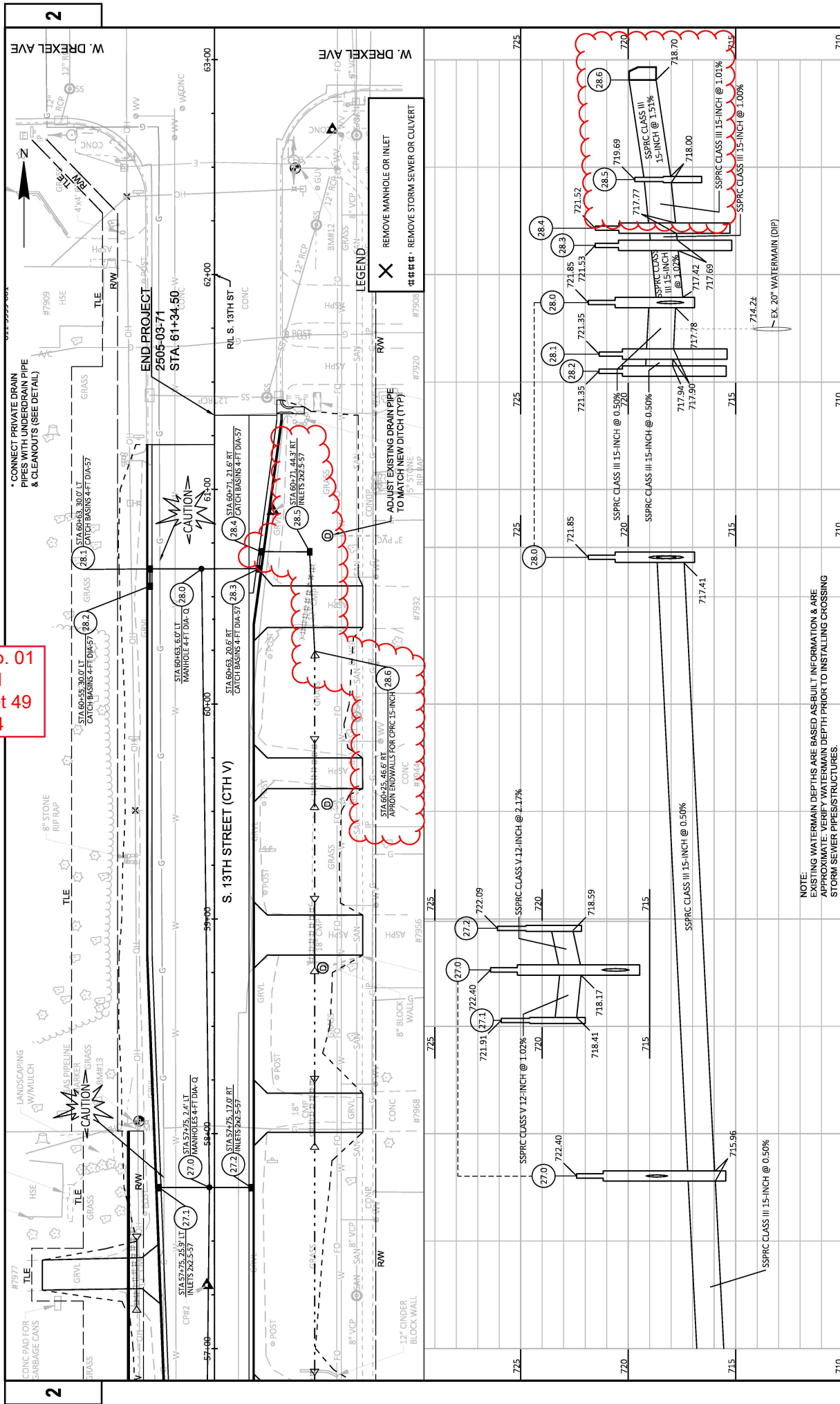


- LEGEND**
- SURFACE WATER FLOW
 - SILT FENCE
 - TEMPORARY DITCH CHECK
 - CULVERT PIPE CHECK
 - ROCK BAG SILT FENCE RELIEF
 - INLET PROTECTION TYPE (X)
 - TOP SOIL, SEED MIXTURE NO. 10, EROSION MAT URBAN CLASS I, TYPE B
 - TOP SOIL, SEED MIXTURE NO. 70, EROSION MAT URBAN CLASS I, TYPE B
 - TOP SOIL, SOD LAWN
 - RIPRAP MEDIUM

Addendum No. 01
ID 2505-03-71
Revised Sheet 40
March 7, 2024

PROJECT NO: 2505-03-71	COUNTY: MILWAUKEE	EROSION CONTROL	SHEET 40
<small>FILE NAME: O:\HIGHWAY OPERATIONS CONTROL FILES\CENTRAL FILES\2010-2014\CTH V - S. 13TH ST\13TH ST - RUEITZ TO DREXEL - 2505-03-01\21\WANS25050371_EC.DWG</small>	<small>HWY: CTH V</small>	<small>PLOT DATE: 7/20/2024 12:05 PM</small>	<small>PLOT NAME: 1 IN 40 FT</small>
<small>LANDSCAPING W/MULCH</small>	<small>CONCRETE SURFACE DRAIN</small>	<small>CONCRETE SURFACE DRAIN</small>	<small>CONCRETE SURFACE DRAIN</small>

Addendum No. 01
 ID 2505-03-71
 Revised Sheet 49
 March 7, 2024



NOTE:
 EXISTING WATERMAIN DEPTHS ARE BASED AS-BUILT INFORMATION & ARE
 APPROXIMATE. VERIFY WATERMAIN DEPTH PRIOR TO INSTALLING CROSSING
 STORM SEWER PIPESTRUCTURES.

PROJECT NO: 2505-03-71	COUNTY: MILWAUKEE	HWY: CTH V	STORM SEWER	SHEET 49
FILE NAME: O:\HIGHWAY OPERATIONS CONTROL FILES\CENTRAL FILES\2004\2004\CTH V - S. 13TH ST\13TH ST - RUEITZ TO DREXEL - 2505-03-01\2171\PLAN\25050371_S1.DWG	PLANT NAME: HILLIARD, MARC	PLANT DATE: 3/2/2024 1:01 PM	PLANT SCALE: 1 IN=40 FT	WISDOT/CADDS SHEET 41

CLEARING & GRUBBING

LOCATION	STATION / OFFSET	I.D.	STATION - STATION	OFFSET	GRUBBING STA	201.0220	201.0220	REMARKS
STAGE 1						GRUBBING	ID	
	39+02 / 46' RT	4+2	-	-	-	-	6	SPLIT TREE
	42+53 / 35' RT	24	39+03 -	39+29	0.3	-	24	SHRUB LINE
	42+73 / 36' RT	27	-	-	-	-	17	-
	43+07 / 36' RT	17	-	-	-	-	17	-
	48+06 / 38' RT	17	-	-	-	-	17	-
	48+24 / 32' RT	20+20	-	-	-	-	40	SPLIT TREE
	49+20 / 33' RT	13	-	-	-	-	13	STUMP
	50+07 / 42' LT	2+2	-	-	-	-	6	SPLIT TREE
	50+07 / 36' LT	3+3	-	-	-	-	2	-
	50+21 / 29' LT	2	-	-	-	-	18	-
	55+89 / 63' RT	18	-	-	-	-	30	SPLIT TREE
	56+12 / 59' RT	15+15	-	-	-	-	26	-
	60+73 / 65' RT	26	-	-	-	-	230	-
SUBTOTAL STAGE 1								
0.3								

STAGE 2

13+49 / 49' LT	10	-	-	-	-	-	10	STUMP
14+10 / 48' LT	12	-	-	-	-	-	12	STUMP
17+53 / 39' LT	16	-	-	-	0.2	-	-	HEDGES
17+56 / 36' LT	12	-	14+93	RT	2.0	-	16	-
18+59 / 38' RT	12	-	16+84	LT	-	-	12	-
18+70 / 36' RT	6X2	-	-	-	-	-	12	SIX 2" TREES
18+71 / 36' RT	12	-	-	-	-	-	12	-
18+70 / 41' RT	12+4	-	-	-	-	-	16	SPLIT 12" & 4" TREE
18+74 / 36' RT	3X12, 8	-	-	-	-	-	44	THREE 12" TREES AND 8" TREE
18+77 / 33' LT	15, 12	-	-	-	-	-	27	15" AND 12" TREES
18+86 / 26' RT	5	-	-	-	-	-	5	-
18+88 / 30' LT	5, 2X3	-	-	-	-	-	11	5" AND TWO 3" TREES
18+94 / 30' LT	5X1	-	-	-	-	-	5	FIVE 1" TREES
18+97 / 36' RT	2X7, 4, 2	-	-	-	-	-	20	TWO 7", ONE 4", ONE 2" TREES
19+09 / 28' RT	4X1	-	-	-	-	-	4	FOUR " TREES
19+15 / 27' RT	12	-	-	-	-	-	12	STUMP
19+21 / 25' RT	2X4	-	-	-	-	-	8	TWO 4" TREES
21+79 / 40' RT	13	-	-	-	-	-	13	STUMP
21+93 / 42' RT	15	-	-	-	-	-	15	-
22+16 / 40' RT	2X4	-	-	-	-	-	8	TWO 4" STUMPS
22+68 / 37' RT	18	-	-	-	-	-	18	STUMP
23+12 / 37' RT	18	-	-	-	-	-	20	-
23+27 / 39' RT	20	-	-	-	-	-	324	-
SUBTOTAL STAGE 2								
2.2								

UNDISTRIBUTED

TOTAL	600
CATEGORY 0010	600

REMOVING STRUCTURE

LOCATION	STATION	DESCRIPTION	REMOVING STRUCTURE EACH	203.0220.02
STAGE 1				REMOVING STRUCTURE EACH
S. 13TH ST	35+93	4x4 BOX CULVERT AND ENDWALLS	1	-
	50+13	4x6 BOX CULVERT AND ENDWALLS	-	1
TOTAL				
1				

CATEGORY 0010

REMOVING SMALL PIPE CULVERTS

LOCATION	STATION	OFFSET	COMMENTS	REMOVING SMALL PIPE CULVERTS EACH	203.0100
STAGE 1					REMOVING SMALL PIPE CULVERTS EACH
29+88	32' RT	1	18" CMP	1	12" CMP
30+06	34' LT	1	18" CMP	1	15" CMP
32+37	35' LT	1	18" CMP	1	15" CMP
34+23	31' LT	1	24" CMP	1	15" CMP
35+05	31' LT	1	12" CMP	1	12" CMP
36+24	31' RT	1	15" CMP	1	15" CMP
36+41	24' LT	1	12" CMP	1	12" CMP
37+19	22' RT	1	18" CMP	1	12" CMP
37+31	23' LT	1	18" CMP	1	18" CMP
37+66	22' RT	1	18" CMP	1	18" CMP
38+40	22' LT	1	15" CMP	1	15" CCP
38+75	22' RT	1	18" CMP	1	18" CMP
39+50	22' RT	1	18" CMP	1	18" CMP
40+30	23' RT	1	18" CMP	1	18" CMP
40+98	23' LT	1	15" CMP	1	18" CMP
41+46	25' RT	1	12" CMP	1	18" CMP
41+71	23' RT	1	15" CMP	1	18" CMP
42+92	23' RT	1	18" CMP	1	18" CMP
43+17	31' LT	1	18" CMP	1	18" CMP
43+62	31' LT	1	18" CMP	1	18" CMP
44+25	34' LT	1	18" CMP	1	18" CMP
44+55	26' RT	1	18" CMP	1	18" CMP
45+01	36' LT	1	18" CMP	1	18" CMP
45+89	36' LT	1	18" CMP	1	18" CMP
46+80	36' LT	1	18" CMP	1	18" CMP
47+42	35' LT	1	18" CMP	1	18" CMP
48+13	23' RT	1	12" CMP	1	12" VCP
48+56	32' LT	1	18" CMP	1	18" CMP
48+94	31' LT	1	18" CMP	1	18" CMP
50+85	31' RT	1	18" CMP	1	18" CMP
51+74	31' LT	1	18" CMP	1	18" CMP
51+75	31' RT	1	18" CMP	1	18" CMP
52+47	39' RT	1	18" CMP	1	18" CMP
53+87	45' RT	1	18" CMP	1	18" CMP
53+91	22' LT	1	12" VCP	1	12" VCP
54+75	45' RT	1	18" CMP	1	18" CMP
55+28	23' LT	1	18" CMP	1	18" CMP
55+29	45' RT	1	18" CMP	1	18" CMP
56+00	45' RT	1	18" CMP	1	18" CMP
56+77	46' RT	1	18" CMP	1	18" CMP
57+33	37' LT	1	12" CMP	1	12" CMP
58+12	45' RT	1	18" CMP	1	18" CMP
58+93	45' RT	1	18" CMP	1	18" CMP
60+48	43' RT	1	12" CMP	1	12" CMP
STAGE 1 SUBTOTAL					44

REMOVING SMALL PIPE CULVERTS (CONT'D)

LOCATION	STATION	OFFSET	COMMENTS	REMOVING SMALL PIPE CULVERTS EACH	203.0100
STAGE 2					REMOVING SMALL PIPE CULVERTS EACH
12+96	27' RT	1	12" CMP	1	12" CMP
14+73	24' LT	1	15" CMP	1	15" CMP
16+75	24' LT	1	15" CMP	1	15" CMP
17+73	25' LT	1	12" CMP	1	12" CMP
18+57	25' LT	1	12" CMP	1	12" CMP
21+73	30' LT	1	15" CMP	1	15" CMP
22+91	30' RT	1	12" CMP	1	12" CMP
24+18	31' RT	1	12" CMP	1	12" CMP
25+26	32' RT	1	18" CMP	1	18" CMP
26+35	32' RT	1	18" CMP	1	18" CMP
26+37	32' LT	1	15" CCP	1	15" CCP
27+04	33' LT	1	18" CMP	1	18" CMP
27+38	32' RT	1	18" CMP	1	18" CMP
28+34	32' RT	1	18" CMP	1	18" CMP
29+27	32' RT	1	18" CMP	1	18" CMP
STAGE 2 SUBTOTAL					15
UNDISTRIBUTED					1
TOTAL					60

CATEGORY 0010

TOTAL	60
CATEGORY 0010	60

Addendum No. 01
ID 2505-03-71
Revised Sheet 84
March 7, 2024

PROJECT NO: 2505-03-71

HWY: CTH V

COUNTY: MILWAUKEE

MISCELLANEOUS QUANTITIES

SHEET 84

E

FILE NAME:

PLOT DATE: 3/6/2024

PLOT BY: DMM

PLOT SCALE: 1:1

Addendum No. 01
 ID 2505-03-71
 Revised Sheet 85
 March 7, 2024

204.0150 REMOVING CURB & GUTTER				204.0155 REMOVING CONCRETE SIDEWALK				204.0165 REMOVING GUARDRAIL			
LOCATION	STATION	STATION	CATEGORY	LOCATION	STATION	STATION	CATEGORY	LOCATION	STATION	STATION	CATEGORY
STAGE 1			0010	STAGE 1			0010	STAGE 2			0010
S. 13TH ST	29+50	33+00	431	S. 13TH ST	29+50	33+00	10	S. 13TH ST	29+50	33+00	-
	33+00	39+00	80		33+00	39+00	-		33+00	39+00	-
	39+00	45+00	-		39+00	45+00	-		39+00	45+00	-
	45+00	51+00	-		45+00	51+00	16		45+00	51+00	26
	51+00	57+00	-		51+00	57+00	57		51+00	57+00	-
	57+00	63+00	-		57+00	63+00	-		57+00	63+00	-
UNDISTRIBUTED			39	UNDISTRIBUTED			7	UNDISTRIBUTED			4
SUBTOTAL STAGE 1			550	SUBTOTAL STAGE 1			90	SUBTOTAL STAGE 2			30
STAGE 2				STAGE 2				TOTAL			30
S. 13TH ST	10+23	15+00	493	S. 13TH ST	10+23	15+00	55	REMOVING BUSINESS SIGN			
	15+00	21+00	-		15+00	21+00	-	204.9060.S.03			
	21+00	27+00	140		21+00	27+00	-	REMOVING BUSINESS SIGN			
	27+00	29+50	33		27+00	29+50	-	EACH			
UNDISTRIBUTED			34	W. PUETZ RD	WEST MEDIAN		3	LOCATION	STATION	OFFSET	CATEGORY
SUBTOTAL STAGE 2			700	EAST MEDIAN			3	STAGE 1			0010
TOTAL			1,250	UNDISTRIBUTED			9	S. 13TH ST	54+46	28' LT	1
				SUBTOTAL STAGE 2			70	TOTAL			1
				TOTAL			160	STORM SEWER PIPE REMOVALS			
REMOVING PAVEMENT											
204.0100 REMOVING CONCRETE PAVEMENT											
LOCATION	STATION	STATION	CATEGORY	LOCATION	STATION	STATION	CATEGORY	LOCATION	STATION	STATION	CATEGORY
STAGE 1			0010	STAGE 1			0010	STAGE 1			0010
S. 13TH ST	29+50	33+00	700	S. 13TH ST	29+50	33+00	33	S. 13TH ST	29+50	33+00	-
	33+00	39+00	1,200		33+00	39+00	-		33+00	39+00	-
	39+00	45+00	1,200		39+00	45+00	-		39+00	45+00	-
	45+00	51+00	1,200		45+00	51+00	-		45+00	51+00	-
	51+00	57+00	1,200		51+00	57+00	856		51+00	57+00	-
	57+00	63+00	856		57+00	63+00	-		57+00	63+00	-
UNDISTRIBUTED			144				2	UNDISTRIBUTED			12
SUBTOTAL STAGE 1			6,500				2	SUBTOTAL STAGE 1			6
STAGE 2								SUBTOTAL STAGE 2			110
S. 13TH ST	10+23	15+00	430				1	TOTAL			720
	15+00	21+00	1,200				1	STORM SEWER STRUCTURE REMOVALS			
	21+00	27+00	1,200				1	LOCATION	STATION	OFFSET	CATEGORY
	27+00	29+50	500				1	STAGE 1			0010
UNDISTRIBUTED			170				4	S. 13TH ST	10+84	23' LT	1
SUBTOTAL STAGE 2			3,500				2		10+84	23' RT	1
TOTAL			10,000				4		11+71	21' LT	1
									12+41	30' RT	1
									UNDISTRIBUTED		0
									SUBTOTAL STAGE 2		4
									TOTAL		2
									SUBTOTAL STAGE 1		110
									TOTAL		8

PROJECT NO: 2505-03-71

COUNTY: MILWAUKEE

MISCELLANEOUS QUANTITIES

SHEET 85

E

FILE NAME :

PLOT DATE : 2/20/2024

PLOT BY : DMW

PLOT SCALE : 1:1

STORM SEWER PIPE

BEGIN STR. NO.	END STR. NO.	DESCRIPTION	608.0315	608.0318	608.0324	608.0330	608.0336	608.0512	608.2324	608.3012	608.3015
520.8000		CONCRETE COLLARS FOR EACH	15-INCH CLASS III REINFORCED CONCRETE	18-INCH CLASS III REINFORCED CONCRETE	24-INCH CLASS III REINFORCED CONCRETE	30-INCH CLASS III REINFORCED CONCRETE	36-INCH CLASS III REINFORCED CONCRETE	12-INCH CLASS V REINFORCED CONCRETE	24X38-INCH CLASS III-HORIZONTAL REINFORCED CONCRETE	12-INCH CLASS III-H REINFORCED CONCRETE	15-INCH CLASS III-H REINFORCED CONCRETE
9.0	10.0		12			213					
9.1	9.0		34								
9.2	9.0										
9.10	9.1										
9.20	9.2										
10.0	10A				60						
10.1	10.0						180				
10A	11.0										
10B	10A										
10C	10B										16
EX-H	EX-H	2									
11.0	12.0					123					
11.1	11.0										
12.2	12.1		8								
12.1	12.0		12								
12.0	12.3						28				
12.4	12.3										
12.3	12.5						58				
13.0	13.1					13					
EX-129	13.0					226					
15.2	15.1										
15.1	15.0		22								
15.0	15.3										
17.1	17.0										
17.2	17.0		40					12			
17.3	17.2		32								
17.0	18.0		100								
18.1	18.0							12			
18.2	18.0							33			
18.0	19.0				215						
19.1	19.0							42			
19.0	20.0				160						
19A	19B										
19B	19C							43			
20.2	20.1		8					33			
20.1	20.0		12								
20.4	20.3		8								
20.3	20.0		22								
20.0	72X113	1			61						
24.0	72X113	1			7						
25.0	24.0				205						
25.1	25.0							16			
25.4	25.3		35								
25.3	25.2		27								
25.2	25.0		23								
26.0	25.0		268								
26.1	26.0							12			
26.3	26.0							25			

Addendum No. 01
 ID 2505-03-71
 Revised Sheet 91
 March 7, 2024

Addendum No. 01
 ID 2505-03-71
 Revised Sheet 92
 March 7, 2024

STORM SEWER PIPE (CONT'D)

520.8000	608.0315	608.0318	608.0324	608.0330	608.0336	608.0512	608.2324	608.3012	608.3015
CONCRETE COLLARS FOR PIPE EACH	STORM SEWER PIPE REINFORCED CONCRETE CLASS III 15-INCH LF	STORM SEWER PIPE REINFORCED CONCRETE CLASS III 18-INCH LF	STORM SEWER PIPE REINFORCED CONCRETE CLASS III 24-INCH LF	STORM SEWER PIPE REINFORCED CONCRETE CLASS III 30-INCH LF	STORM SEWER PIPE REINFORCED CONCRETE CLASS III 36-INCH LF	STORM SEWER PIPE REINFORCED CONCRETE CLASS V 12-INCH LF	STORM SEWER PIPE REINFORCED CONCRETE HORIZONTAL ELLIPTICAL CLASS HE III 24X38-INCH LF	STORM SEWER PIPE CLASS III-A 12-INCH LF	STORM SEWER PIPE CLASS III-A 15-INCH LF
CATEGORY 0010	CATEGORY 0010	CATEGORY 0010	CATEGORY 0010	CATEGORY 0010	CATEGORY 0010	CATEGORY 0010	CATEGORY 0010	CATEGORY 0010	CATEGORY 0010
-	275	-	-	-	-	-	-	-	-
-	286	-	-	-	-	24	-	-	-
-	-	-	-	-	-	20	-	-	-
-	8	-	-	-	-	-	-	-	-
-	24	-	-	-	-	-	-	-	-
-	28.4	-	-	-	-	-	-	-	-
-	28.3	-	-	-	-	-	-	-	-
-	28.0	-	-	-	-	-	-	-	-
-	28.5	-	-	-	-	-	-	-	-
-	28.6	-	-	-	-	-	-	-	-
4	1,290	149	648	512	389	402	8	16	61
SUBTOTAL STAGE 1									
STAGE 2									
S. 13TH ST	1.0 EXISTING	-	-	-	-	-	-	-	-
-	1.1	59	-	-	-	-	-	-	-
-	1.2	-	-	-	-	12	-	-	-
-	2.0	251	-	-	-	34	-	-	-
-	2.1	2.0	-	-	-	12	-	-	-
-	2.2	2.0	-	-	-	34	-	-	-
-	3.0	4.0	-	-	-	-	-	-	-
-	3.1	3.0	-	-	-	33	-	-	-
-	3.2	3.0	-	-	-	43	-	-	-
-	4.0	5.0	-	-	-	-	-	-	-
-	4.1	4.0	-	-	-	12	-	-	-
-	4.2	4.0	-	-	-	28	-	-	-
-	5.0	6.0	-	-	-	12	-	-	-
-	5.1	5.0	-	-	-	12	-	-	-
-	5.2	5.0	-	-	-	34	-	-	-
-	6.0	7.0	-	-	-	-	-	-	-
-	EX. OPP	6.1	-	-	-	-	-	20	-
-	6.1	6.0	-	-	-	-	-	-	-
-	7.0	8.0	-	-	250	-	-	-	-
-	7.1	7.0	-	-	-	12	-	-	-
-	7.2	7.0	-	-	-	34	-	-	-
-	8.1	8.0	-	-	-	12	-	-	-
-	8.2	8.0	-	-	-	34	-	-	-
-	8.0	9.0	-	-	-	-	-	-	-
-	9.3	9.1	-	-	298	-	-	-	-
-	-	16	-	-	-	-	-	-	-
-	-	751	310	548	-	346	-	20	-
-	-	9	16	54	38	52	2	4	4
4	2,050	475	1,250	550	425	800	10	40	65
SUBTOTAL STAGE 2									
UNDISTRIBUTED									
ITEM TOTAL									

PROJECT NO: 2505-03-71	HWY: CTH V	COUNTY: MILWAUKEE	MISCELLANEOUS QUANTITIES	SHEET 92	E
-------------------------------	-------------------	--------------------------	---------------------------------	-----------------	----------

PLOT SCALE: 1:1

PLOT BY: DMW

PLOT DATE: 3/6/2024

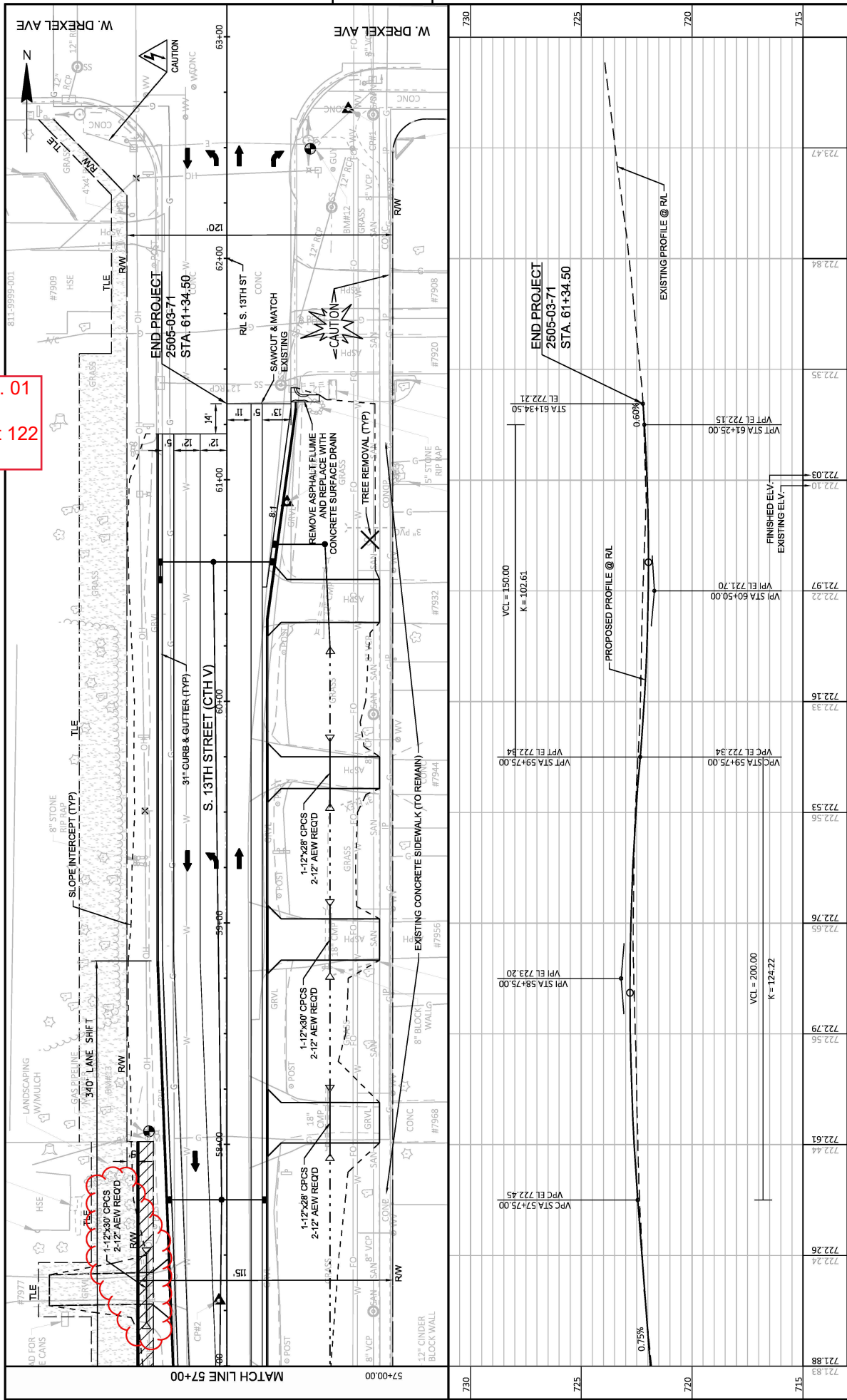
FILE NAME:

EROSION CONTROL ITEMS

LOCATION	STATION	STATION	606.0200	624.0100	627.0200	628.1504	628.1520	628.1905	628.1910	628.6510	628.7005	628.7010	628.7015	628.7020	628.7504	628.7555	628.7570	630.0200	645.0130
			RY	WATER	MULCHING	SILT FENCE	SILT FENCE	MOBILIZATIONS	MOBILIZATIONS	SOIL STABILIZER	PROTECTION	PROTECTION	PROTECTION	INLET	TEMPORARY	CULVERT PIPE	ROCK BAGS	SEEDING	GEOTEXTILE
			MGAL	MGAL	SY	LF	LF	ACRE	ACRE	TYPE B	TYPE A	TYPE B	TYPE C	TYPE D	LF	CHECKS	EACH	LB	SY
			0010	0010	0010	0010	0010	0010	0010	0010	0010	0010	0010	0010	0010	0010	0010	0010	0010
			CATEGORY	CATEGORY	CATEGORY	CATEGORY	CATEGORY	CATEGORY	CATEGORY	CATEGORY	CATEGORY	CATEGORY	CATEGORY	CATEGORY	CATEGORY	CATEGORY	CATEGORY	CATEGORY	CATEGORY
			0010	0010	0010	0010	0010	0010	0010	0010	0010	0010	0010	0010	0010	0010	0010	0010	0010
STAGE 1																			
S. 13TH ST	29+50 - 33+00		-	-	-	-	-	-	-	-	-	7	-	-	-	3	-	-	-
	33+00 - 39+00	10	-	172	-	172	-	-	-	-	1	3	-	4	27	5	-	-	15
	39+00 - 45+00	-	-	48	-	48	-	-	-	1	-	1	-	-	-	11	-	-	-
	45+00 - 51+00	58	-	643	-	643	-	-	-	2	2	2	-	4	-	5	20	-	86
	51+00 - 57+00	-	-	80	-	80	-	-	-	1	4	4	-	4	-	6	-	-	-
	57+00 - 63+00	-	-	360	-	360	-	-	-	2	4	4	-	4	-	4	10	-	-
		68	-	1,303	-	1,303	2	-	2	-	7	21	-	12	27	34	30	-	101
STAGE 2																			
S. 13TH ST	10+23 - 15+00	-	-	88	-	88	-	-	-	-	-	6	-	-	-	-	-	-	-
	15+00 - 21+00	-	-	235	-	235	-	-	-	-	1	5	-	-	-	-	-	-	-
	21+00 - 27+00	-	-	150	-	150	-	-	-	-	-	5	-	-	-	-	1	-	-
	27+00 - 29+50	-	-	-	-	-	-	-	-	-	-	-	-	-	9	2	-	-	-
		-	-	516	-	473	2	0.1	2	0.1	1	16	-	-	9	2	1	-	-
		7	20	84	224	224	-	0.1	-	0.1	2	3	4	3	4	4	19	10	19
		75	20	600	2,000	2,000	4	0.2	4	0.2	10	40	4	15	40	40	50	10	120
TOTAL																			

Addendum No. 01
 ID 2505-03-71
 Revised Sheet 97
 March 7, 2024

Addendum No. 01
 ID 2505-03-71
 Revised Sheet 122
 March 7, 2024



PROJECT NO: 2505-03-71 COUNTY: MILWAUKEE HWY: CTH V PLAN AND PROFILE: S. 13TH STREET SHEET 122 E
 FILE NAME: O:\HIGHWAY OPERATIONS CONTROL FILES\CENTRAL FILES\2024\CTH V - S. 13TH ST\13TH ST - RUEITZ TO DREXEL - 2505-03-01\21\PLAN\25050371_PPL.DWG PLOT DATE: 7/20/2024 11:32 AM PLOT BY: HILLIARD, MARC PLOT NAME: S. 13TH STREET SHEET 122
 LAYOUT NAME: 09 PLOT SCALE: 1 IN=40 FT WISDOT/CADDS SHEET 44



Proposal Schedule of Items

Proposal ID: 20240312012 Project(s): 2505-03-71

Federal ID(s): WISC 2024280

SECTION: 0001 Contract Items

Alt Set ID: Alt Mbr ID:

Proposal Line Number	Item ID Description	Approximate Quantity and Units	Unit Price	Bid Amount
0002	201.0205 Grubbing	3.200 STA	_____.	_____.
0004	201.0220 Grubbing	600.000 ID	_____.	_____.
0006	203.0220 Removing Structure (structure) 01. 4x4 Box Culverts and Endwalls	1.000 EACH	_____.	_____.
0008	203.0220 Removing Structure (structure) 02. 4x6 Box Culverts and Endwalls	1.000 EACH	_____.	_____.
0010	204.0100 Removing Concrete Pavement	10,000.000 SY	_____.	_____.
0012	204.0150 Removing Curb & Gutter	1,250.000 LF	_____.	_____.
0014	204.0155 Removing Concrete Sidewalk	160.000 SY	_____.	_____.
0016	204.0165 Removing Guardrail	30.000 LF	_____.	_____.
0018	204.0195 Removing Concrete Bases	3.000 EACH	_____.	_____.
0020	204.0210 Removing Manholes	2.000 EACH	_____.	_____.
0022	204.0220 Removing Inlets	4.000 EACH	_____.	_____.
0024	204.0245 Removing Storm Sewer (size) 01. 12- Inch	720.000 LF	_____.	_____.
0026	204.0245 Removing Storm Sewer (size) 02. 30- Inch	110.000 LF	_____.	_____.
0028	204.0245 Removing Storm Sewer (size) 03. 24x38- Inch	8.000 LF	_____.	_____.
0030	204.9060.S Removing (item description) 01. Flashing Beacons	4.000 EACH	_____.	_____.



Proposal Schedule of Items

Proposal ID: 20240312012 Project(s): 2505-03-71

Federal ID(s): WISC 2024280

SECTION: 0001 Contract Items

Alt Set ID: Alt Mbr ID:

Proposal Line Number	Item ID Description	Approximate Quantity and Units	Unit Price	Bid Amount
0032	204.9060.S Removing (item description) 02. Traffic Signal Equipment at Intersection	1.000 EACH	_____.	_____.
0034	204.9060.S Removing (item description) 03. Business Sign	1.000 EACH	_____.	_____.
0036	205.0100 Excavation Common	27,000.000 CY	_____.	_____.
0038	206.2001 Excavation for Structures Culverts (structure) 01. 48x76-Inch	1.000 EACH	_____.	_____.
0040	206.2001 Excavation for Structures Culverts (structure) 02. 72X113-Inch	1.000 EACH	_____.	_____.
0042	213.0100 Finishing Roadway (project) 01. 2505-03-71	1.000 EACH	_____.	_____.
0044	305.0110 Base Aggregate Dense 3/4-Inch	50.000 TON	_____.	_____.
0046	305.0120 Base Aggregate Dense 1 1/4-Inch	13,000.000 TON	_____.	_____.
0048	305.0130 Base Aggregate Dense 3-Inch	7,500.000 TON	_____.	_____.
0050	310.0110 Base Aggregate Open-Graded	10.000 TON	_____.	_____.
0052	415.0080 Concrete Pavement 8-Inch	22,000.000 SY	_____.	_____.
0054	415.0210 Concrete Pavement Gaps	6.000 EACH	_____.	_____.
0056	416.0610 Drilled Tie Bars	60.000 EACH	_____.	_____.
0058	416.0620 Drilled Dowel Bars	170.000 EACH	_____.	_____.
0060	455.0605 Tack Coat	140.000 GAL	_____.	_____.



Proposal Schedule of Items

Proposal ID: 20240312012 Project(s): 2505-03-71

Federal ID(s): WISC 2024280

SECTION: 0001 Contract Items

Alt Set ID: Alt Mbr ID:

Proposal Line Number	Item ID Description	Approximate Quantity and Units	Unit Price	Bid Amount
0062	460.2000 Incentive Density HMA Pavement	500.000 DOL	1.00000	500.00
0064	460.6223 HMA Pavement 3 MT 58-28 S	300.000 TON	_____.	_____.
0066	460.6224 HMA Pavement 4 MT 58-28 S	200.000 TON	_____.	_____.
0068	465.0120 Asphaltic Surface Driveways and Field Entrances	340.000 TON	_____.	_____.
0070	465.0125 Asphaltic Surface Temporary	10.000 TON	_____.	_____.
0072	511.1200 Temporary Shoring (structure) 01. 48X76-Inch	240.000 SF	_____.	_____.
0074	511.1200 Temporary Shoring (structure) 02. 72X113-Inch	360.000 SF	_____.	_____.
0076	520.1015 Apron Endwalls for Culvert Pipe 15-Inch	2.000 EACH	_____.	_____.
0078	520.2015 Culvert Pipe Temporary 15-Inch	63.000 LF	_____.	_____.
0080	520.8000 Concrete Collars for Pipe	4.000 EACH	_____.	_____.
0082	521.1012 Apron Endwalls for Culvert Pipe Steel 12-Inch	56.000 EACH	_____.	_____.
0084	521.3112 Culvert Pipe Corrugated Steel 12-Inch	780.000 LF	_____.	_____.
0086	522.1012 Apron Endwalls for Culvert Pipe Reinforced Concrete 12-Inch	2.000 EACH	_____.	_____.
0088	522.1015 Apron Endwalls for Culvert Pipe Reinforced Concrete 15-Inch	3.000 EACH	_____.	_____.



Proposal Schedule of Items

Proposal ID: 20240312012 Project(s): 2505-03-71

Federal ID(s): WISC 2024280

SECTION: 0001 Contract Items

Alt Set ID: Alt Mbr ID:

Proposal Line Number	Item ID Description	Approximate Quantity and Units	Unit Price	Bid Amount
0090	522.1018 Apron Endwalls for Culvert Pipe Reinforced Concrete 18-Inch	2.000 EACH	_____.	_____.
0092	522.1030 Apron Endwalls for Culvert Pipe Reinforced Concrete 30-Inch	1.000 EACH	_____.	_____.
0094	522.1036 Apron Endwalls for Culvert Pipe Reinforced Concrete 36-Inch	1.000 EACH	_____.	_____.
0096	522.2348 Culvert Pipe Reinforced Concrete Horizontal Elliptical Class HE-III 48x76-Inch	74.000 LF	_____.	_____.
0098	522.2648 Apron Endwalls for Culvert Pipe Reinforced Concrete Horizontal Elliptical 48x76-Inch	2.000 EACH	_____.	_____.
0100	601.0331 Concrete Curb & Gutter 31-Inch	11,000.000 LF	_____.	_____.
0102	601.0600 Concrete Curb Pedestrian	130.000 LF	_____.	_____.
0104	602.0410 Concrete Sidewalk 5-Inch	24,000.000 SF	_____.	_____.
0106	602.0420 Concrete Sidewalk 7-Inch	3,100.000 SF	_____.	_____.
0108	602.0515 Curb Ramp Detectable Warning Field Natural Patina	210.000 SF	_____.	_____.
0110	602.0615 Curb Ramp Detectable Warning Field Radial Natural Patina	100.000 SF	_____.	_____.
0112	602.0815 Concrete Driveway 7-Inch	3,000.000 SY	_____.	_____.
0114	602.0865 Concrete Driveway HES 7-Inch	100.000 SY	_____.	_____.
0116	602.3010 Concrete Surface Drains	1.000 CY	_____.	_____.



Proposal Schedule of Items

Proposal ID: 20240312012 Project(s): 2505-03-71

Federal ID(s): WISC 2024280

SECTION: 0001 Contract Items

Alt Set ID: Alt Mbr ID:

Proposal Line Number	Item ID Description	Approximate Quantity and Units	Unit Price	Bid Amount
0118	606.0200 Riprap Medium	75.000 CY	_____.	_____.
0120	608.0315 Storm Sewer Pipe Reinforced Concrete Class III 15-Inch	2,050.000 LF	_____.	_____.
0122	608.0318 Storm Sewer Pipe Reinforced Concrete Class III 18-Inch	475.000 LF	_____.	_____.
0124	608.0324 Storm Sewer Pipe Reinforced Concrete Class III 24-Inch	1,250.000 LF	_____.	_____.
0126	608.0330 Storm Sewer Pipe Reinforced Concrete Class III 30-Inch	550.000 LF	_____.	_____.
0128	608.0336 Storm Sewer Pipe Reinforced Concrete Class III 36-Inch	425.000 LF	_____.	_____.
0130	608.0512 Storm Sewer Pipe Reinforced Concrete Class V 12-Inch	800.000 LF	_____.	_____.
0132	608.2324 Storm Sewer Pipe Reinforced Concrete Horizontal Elliptical Class HE-III 24x38-Inch	10.000 LF	_____.	_____.
0134	608.3012 Storm Sewer Pipe Class III-A 12-Inch	40.000 LF	_____.	_____.
0136	608.3015 Storm Sewer Pipe Class III-A 15-Inch	65.000 LF	_____.	_____.
0138	611.0420 Reconstructing Manholes	4.000 EACH	_____.	_____.
0140	611.0555 Manhole Covers Type Q	23.000 EACH	_____.	_____.
0142	611.1004 Catch Basins 4-FT Diameter	24.000 EACH	_____.	_____.
0144	611.1006 Catch Basins 6-FT Diameter	2.000 EACH	_____.	_____.



Proposal Schedule of Items

Proposal ID: 20240312012 Project(s): 2505-03-71

Federal ID(s): WISC 2024280

SECTION: 0001 Contract Items

Alt Set ID: Alt Mbr ID:

Proposal Line Number	Item ID Description	Approximate Quantity and Units	Unit Price	Bid Amount
0146	611.2004 Manholes 4-FT Diameter	15.000 EACH	_____.	_____.
0148	611.2005 Manholes 5-FT Diameter	6.000 EACH	_____.	_____.
0150	611.2006 Manholes 6-FT Diameter	2.000 EACH	_____.	_____.
0152	611.3225 Inlets 2x2.5-FT	24.000 EACH	_____.	_____.
0154	611.8110 Adjusting Manhole Covers	16.000 EACH	_____.	_____.
0156	611.8115 Adjusting Inlet Covers	2.000 EACH	_____.	_____.
0158	611.8120.S Cover Plates Temporary	10.000 EACH	_____.	_____.
0160	612.0204 Pipe Underdrain Unperforated 4-Inch	800.000 LF	_____.	_____.
0162	612.0206 Pipe Underdrain Unperforated 6-Inch	100.000 LF	_____.	_____.
0164	612.0208 Pipe Underdrain Unperforated 8-Inch	100.000 LF	_____.	_____.
0166	612.0700 Drain Tile Exploration	250.000 LF	_____.	_____.
0168	616.0206 Fence Chain Link 6-FT	120.000 LF	_____.	_____.
0170	619.1000 Mobilization	1.000 EACH	_____.	_____.
0172	620.0100 Concrete Corrugated Median	5,500.000 SF	_____.	_____.
0174	620.0300 Concrete Median Sloped Nose	150.000 SF	_____.	_____.
0176	624.0100 Water	20.000 MGAL	_____.	_____.



Proposal Schedule of Items

Proposal ID: 20240312012 Project(s): 2505-03-71

Federal ID(s): WISC 2024280

SECTION: 0001 Contract Items

Alt Set ID: Alt Mbr ID:

Proposal Line Number	Item ID Description	Approximate Quantity and Units	Unit Price	Bid Amount
0178	625.0100 Topsoil	16,000.000 SY	_____.	_____.
0180	627.0200 Mulching	600.000 SY	_____.	_____.
0182	628.1504 Silt Fence	2,000.000 LF	_____.	_____.
0184	628.1520 Silt Fence Maintenance	2,000.000 LF	_____.	_____.
0186	628.1905 Mobilizations Erosion Control	4.000 EACH	_____.	_____.
0188	628.1910 Mobilizations Emergency Erosion Control	4.000 EACH	_____.	_____.
0190	628.2008 Erosion Mat Urban Class I Type B	2,500.000 SY	_____.	_____.
0192	628.6510 Soil Stabilizer Type B	0.200 ACRE	_____.	_____.
0194	628.7005 Inlet Protection Type A	10.000 EACH	_____.	_____.
0196	628.7010 Inlet Protection Type B	40.000 EACH	_____.	_____.
0198	628.7015 Inlet Protection Type C	4.000 EACH	_____.	_____.
0200	628.7020 Inlet Protection Type D	15.000 EACH	_____.	_____.
0202	628.7504 Temporary Ditch Checks	40.000 LF	_____.	_____.
0204	628.7555 Culvert Pipe Checks	40.000 EACH	_____.	_____.
0206	628.7570 Rock Bags	50.000 EACH	_____.	_____.
0208	629.0210 Fertilizer Type B	0.150 CWT	_____.	_____.



Proposal Schedule of Items

Proposal ID: 20240312012 Project(s): 2505-03-71

Federal ID(s): WISC 2024280

SECTION: 0001 Contract Items

Alt Set ID: Alt Mbr ID:

Proposal Line Number	Item ID Description	Approximate Quantity and Units	Unit Price	Bid Amount
0210	630.0110 Seeding Mixture No. 10	5.000 LB	_____.	_____.
0212	630.0170 Seeding Mixture No. 70	12.000 LB	_____.	_____.
0214	630.0200 Seeding Temporary	10.000 LB	_____.	_____.
0216	630.0500 Seed Water	5.000 MGAL	_____.	_____.
0218	631.0300 Sod Water	350.000 MGAL	_____.	_____.
0220	631.1000 Sod Lawn	13,500.000 SY	_____.	_____.
0222	634.0811 Posts Tubular Steel 2x2-Inch X 11-FT	20.000 EACH	_____.	_____.
0224	634.0812 Posts Tubular Steel 2x2-Inch X 12-FT	24.000 EACH	_____.	_____.
0226	634.0814 Posts Tubular Steel 2x2-Inch X 14-FT	8.000 EACH	_____.	_____.
0228	637.0620 Sign Flags Permanent Type II	4.000 EACH	_____.	_____.
0230	637.2210 Signs Type II Reflective H	230.300 SF	_____.	_____.
0232	637.2215 Signs Type II Reflective H Folding	5.180 SF	_____.	_____.
0234	637.2230 Signs Type II Reflective F	83.500 SF	_____.	_____.
0236	638.2102 Moving Signs Type II	5.000 EACH	_____.	_____.
0238	638.2602 Removing Signs Type II	57.000 EACH	_____.	_____.
0240	638.3000 Removing Small Sign Supports	39.000 EACH	_____.	_____.



Proposal Schedule of Items

Proposal ID: 20240312012 Project(s): 2505-03-71

Federal ID(s): WISC 2024280

SECTION: 0001 Contract Items

Alt Set ID: Alt Mbr ID:

Proposal Line Number	Item ID Description	Approximate Quantity and Units	Unit Price	Bid Amount
0242	643.0300 Traffic Control Drums	8,000.000 DAY	_____.	_____.
0244	643.0420 Traffic Control Barricades Type III	5,750.000 DAY	_____.	_____.
0246	643.0705 Traffic Control Warning Lights Type A	11,500.000 DAY	_____.	_____.
0248	643.0900 Traffic Control Signs	64,000.000 DAY	_____.	_____.
0250	643.0920 Traffic Control Covering Signs Type II	10.000 EACH	_____.	_____.
0252	643.1000 Traffic Control Signs Fixed Message	649.500 SF	_____.	_____.
0254	643.1050 Traffic Control Signs PCMS	500.000 DAY	_____.	_____.
0256	643.1070 Traffic Control Cones 42-Inch	2,800.000 DAY	_____.	_____.
0258	643.3150 Temporary Marking Line Removable Tape 4-Inch	50.000 LF	_____.	_____.
0260	643.3250 Temporary Marking Line Removable Tape 8-Inch	400.000 LF	_____.	_____.
0262	643.3550 Temporary Marking Arrow Removable Tape	2.000 EACH	_____.	_____.
0264	643.3650 Temporary Marking Word Removable Tape	1.000 EACH	_____.	_____.
0266	643.3850 Temporary Marking Stop Line Removable Tape 18-Inch	100.000 LF	_____.	_____.
0268	643.5000 Traffic Control	1.000 EACH	_____.	_____.
0270	644.1440 Temporary Pedestrian Surface Matting	3,600.000 SF	_____.	_____.



Proposal Schedule of Items

Proposal ID: 20240312012 Project(s): 2505-03-71

Federal ID(s): WISC 2024280

SECTION: 0001 Contract Items

Alt Set ID: Alt Mbr ID:

Proposal Line Number	Item ID Description	Approximate Quantity and Units	Unit Price	Bid Amount
0272	644.1601 Temporary Pedestrian Curb Ramp	700.000 DAY	_____.	_____.
0274	644.1605 Temporary Pedestrian Detectable Warning Field	100.000 SF	_____.	_____.
0276	644.1810 Temporary Pedestrian Barricade	700.000 LF	_____.	_____.
0278	645.0105 Geotextile Type C	360.000 SY	_____.	_____.
0280	645.0111 Geotextile Type DF Schedule A	20.000 SY	_____.	_____.
0282	645.0130 Geotextile Type R	120.000 SY	_____.	_____.
0284	645.0220 Geogrid Type SR	6,200.000 SY	_____.	_____.
0286	646.1020 Marking Line Epoxy 4-Inch	21,000.000 LF	_____.	_____.
0288	646.3020 Marking Line Epoxy 8-Inch	1,800.000 LF	_____.	_____.
0290	646.5020 Marking Arrow Epoxy	15.000 EACH	_____.	_____.
0292	646.5120 Marking Word Epoxy	6.000 EACH	_____.	_____.
0294	646.6120 Marking Stop Line Epoxy 18-Inch	450.000 LF	_____.	_____.
0296	646.7120 Marking Diagonal Epoxy 12-Inch	80.000 LF	_____.	_____.
0298	646.7420 Marking Crosswalk Epoxy Transverse Line 6-Inch	1,400.000 LF	_____.	_____.
0300	646.8020 Marking Corrugated Median Epoxy	2,500.000 SF	_____.	_____.
0302	646.8220 Marking Island Nose Epoxy	4.000 EACH	_____.	_____.



Proposal Schedule of Items

Proposal ID: 20240312012 Project(s): 2505-03-71

Federal ID(s): WISC 2024280

SECTION: 0001 Contract Items

Alt Set ID: Alt Mbr ID:

Proposal Line Number	Item ID Description	Approximate Quantity and Units	Unit Price	Bid Amount
0304	650.4000 Construction Staking Storm Sewer	82.000 EACH	_____.	_____.
0306	650.4500 Construction Staking Subgrade	6,200.000 LF	_____.	_____.
0308	650.5000 Construction Staking Base	350.000 LF	_____.	_____.
0310	650.5500 Construction Staking Curb Gutter and Curb & Gutter	200.000 LF	_____.	_____.
0312	650.6000 Construction Staking Pipe Culverts	62.000 EACH	_____.	_____.
0314	650.7000 Construction Staking Concrete Pavement	5,900.000 LF	_____.	_____.
0316	650.8501 Construction Staking Electrical Installations (project) 01. 2505-03-71	1.000 EACH	_____.	_____.
0318	650.9000 Construction Staking Curb Ramps	25.000 EACH	_____.	_____.
0320	650.9500 Construction Staking Sidewalk (project) 01. 2505-03-71	2.000 EACH	_____.	_____.
0322	650.9911 Construction Staking Supplemental Control (project) 01. 2505-03-71	2.000 EACH	_____.	_____.
0324	650.9920 Construction Staking Slope Stakes	6,200.000 LF	_____.	_____.
0326	652.0225 Conduit Rigid Nonmetallic Schedule 40 2-Inch	400.000 LF	_____.	_____.
0328	652.0235 Conduit Rigid Nonmetallic Schedule 40 3-Inch	50.000 LF	_____.	_____.
0330	652.0800 Conduit Loop Detector	350.000 LF	_____.	_____.



Proposal Schedule of Items

Proposal ID: 20240312012 Project(s): 2505-03-71

Federal ID(s): WISC 2024280

SECTION: 0001 Contract Items

Alt Set ID: Alt Mbr ID:

Proposal Line Number	Item ID Description	Approximate Quantity and Units	Unit Price	Bid Amount
0332	653.0135 Pull Boxes Steel 24x36-Inch	2.000 EACH	_____.	_____.
0334	653.0145 Pull Boxes Steel 24x48-Inch	1.000 EACH	_____.	_____.
0336	653.0905 Removing Pull Boxes	1.000 EACH	_____.	_____.
0338	654.0101 Concrete Bases Type 1	1.000 EACH	_____.	_____.
0340	655.0230 Cable Traffic Signal 5-14 AWG	200.000 LF	_____.	_____.
0342	655.0240 Cable Traffic Signal 7-14 AWG	300.000 LF	_____.	_____.
0344	655.0700 Loop Detector Lead In Cable	500.000 LF	_____.	_____.
0346	655.0800 Loop Detector Wire	1,400.000 LF	_____.	_____.
0348	658.0173 Traffic Signal Face 3S 12-Inch	5.000 EACH	_____.	_____.
0350	658.0174 Traffic Signal Face 4S 12-Inch	6.000 EACH	_____.	_____.
0352	658.5070 Signal Mounting Hardware (location) 01.CTH V & W PUETZ RD	1.000 EACH	_____.	_____.
0354	690.0150 Sawing Asphalt	800.000 LF	_____.	_____.
0356	690.0250 Sawing Concrete	800.000 LF	_____.	_____.
0358	715.0720 Incentive Compressive Strength Concrete Pavement	1,000.000 DOL	1.00000	1,000.00
0360	ASP.1T0A On-the-Job Training Apprentice at \$5.00/ HR	3,000.000 HRS	5.00000	15,000.00



Proposal Schedule of Items

Proposal ID: 20240312012 Project(s): 2505-03-71

Federal ID(s): WISC 2024280

SECTION: 0001 Contract Items

Alt Set ID: Alt Mbr ID:

Proposal Line Number	Item ID Description	Approximate Quantity and Units	Unit Price	Bid Amount
0362	ASP.1T0G On-the-Job Training Graduate at \$5.00/HR	6,400.000 HRS	5.00000	32,000.00
0364	SPV.0035 Special 01. Backfill Slurry	250.000 CY	_____.	_____.
0366	SPV.0060 Special 01. Inlet Covers Type 57	50.000 EACH	_____.	_____.
0368	SPV.0060 Special 02. Adjusting Water Valve Boxes	16.000 EACH	_____.	_____.
0370	SPV.0060 Special 03. Watermain Protection	11.000 EACH	_____.	_____.
0372	SPV.0060 Special 04. Cleaning Drainage Structures and Pipes	7.000 EACH	_____.	_____.
0374	SPV.0060 Special 05. Utility Line Opening (ULO)	8.000 EACH	_____.	_____.
0376	SPV.0060 Special 06. Field Facilities Office Space	1.000 EACH	_____.	_____.
0378	SPV.0060 Special 07. Remove and Reinstall Mailboxes	70.000 EACH	_____.	_____.
0380	SPV.0060 Special 08. Temporary Mailboxes	70.000 EACH	_____.	_____.
0382	SPV.0060 Special 09. Replacement Mailbox Posts & Hardware	25.000 EACH	_____.	_____.
0384	SPV.0060 Special 10. Section Corner Monuments	1.000 EACH	_____.	_____.
0386	SPV.0060 Special 11. Internal/External Sanitary Manhole Seal	13.000 EACH	_____.	_____.
0388	SPV.0060 Special 12. Cored Holes 6-Inch	40.000 EACH	_____.	_____.



Proposal Schedule of Items

Proposal ID: 20240312012 Project(s): 2505-03-71

Federal ID(s): WISC 2024280

SECTION: 0001 Contract Items

Alt Set ID: Alt Mbr ID:

Proposal Line Number	Item ID Description	Approximate Quantity and Units	Unit Price	Bid Amount
0390	SPV.0060 Special 13. Apron Endwalls For Culv Pipe Rnfrcd Conc Horiz Ellip Class HE-III 72x113-Inch	2.000 EACH	_____.	_____.
0392	SPV.0060 Special 14. Construction Dewatering	2.000 EACH	_____.	_____.
0394	SPV.0060 Special 20. Remove and Reinstall Traffic Signal Standard	1.000 EACH	_____.	_____.
0396	SPV.0060 Special 21. Solar Powered Flashing Beacon – 12" LED	1.000 EACH	_____.	_____.
0398	SPV.0060 Special 22. Disconnect and Reconnect Existing Signal Cable and Ground Wiring	2.000 EACH	_____.	_____.
0400	SPV.0060 Special 23. Accessible Pedestrian Push Button System, 8 Buttons	1.000 EACH	_____.	_____.
0402	SPV.0090 Special 01. Culvert Pipe Reinforced Concrete Horiz Elliptical Class HE-III 72x113-Inch	80.000 LF	_____.	_____.
0404	SPV.0170 Special 01. Test Rolling	55.000 STA	_____.	_____.
0408	203.0100 Removing Small Pipe Culverts	60.000 EACH	_____.	_____.
Section: 0001			Total:	_____.
			Total Bid:	_____.

