



Wisconsin Department of Transportation

Division of Transportation Systems Development

Bureau of Project Development
4822 Madison Yards Way, 4th Floor South
Madison, WI 53705

February 3, 2025

Telephone: (608) 266-1631
Facsimile (FAX): (608) 266-8459

NOTICE TO ALL CONTRACTORS:

Proposal #06: 5537-00-71, WISC 2025305
Town of Bergen to STH 162 (CTH O)
Skyline Lane to Sylvan Glen Road
CTH O
Vernon County

Letting of February 11, 2025

This is Addendum No. 01, which provides for the following:

Schedule of Items:

Added Bid Item Quantities					
Bid Item	Item Description	Unit	Proposal Total Prior to Addendum	Proposal Quantity Change (-)	Proposal Total After Addendum
504.0900	Concrete Masonry Endwalls	CY	0	9	9

Revised Bid Item Quantities					
Bid Item	Item Description	Unit	Proposal Total Prior to Addendum	Proposal Quantity Change (-)	Proposal Total After Addendum
522.1500	Pipe Cattle Pass Reinforced Concrete	LF	46	-6	40

Plan Sheets:

Revised Plan Sheets	
Plan Sheet	Plan Sheet Title (brief description of changes to sheet)
30	Miscellaneous Quantities (Revised bid items in culvert pipe table)
50	Plan and Profile (Revised sheet to show endwalls)
139	Cross Sections: CTH O (Revised sheet to show endwalls)

Schedule of Items

Attached, dated February 3, 2025, are the revised Schedule of Items Pages 2 and 6.

Plan Sheets

The following 8½ x 11-inch sheets are attached and made part of the plans for this proposal:
Revised: 30, 50, and 139.

The responsibility for notifying potential subcontractors and suppliers of these changes remains with the prime contractor.

Sincerely,

Mike Coleman

Proposal Development Specialist
Proposal Management Section

END OF ADDENDUM

Addendum No. 01
ID 5537-00-71
Revised Sheet 30
February 3, 2025

BASE AGGREGATE ITEMS

STATION	LOCATION	DENSE 3/4-INCH TON	DENSE 1 1/4-INCH TON	WATER MGAL	GEOGRID TYPE SSR SY	REMARKS
100+80 - 183+70	LT&RT	950	15380	160		
127+30 - 139+20	LT&RT	-	21730	220	14830	EBS SECTION
142+90 - 146+60	LT&RT	-	6630	70	4070	EBS SECTION
SKYLINE LANE	LT&RT	-	320	0		
PROJECT TOTALS		950	44,060	450	18,900	

*ADDITIONAL QUANTITIES SHOWN ELSEWHERE ON PLAN

ASPHALTIC ITEMS

STATION	LOCATION	TACK COAT GAL	HMA PAVEMENT 3 MT 58-28 S TON	HMA PAVEMENT 4 MT 58-28 S TON	ASPHALTIC SURFACE TON	REMARKS
100+80 - 183+70	LT&RT	1112	2800	2180	-	
SKYLINE ROAD	LT&RT	33	-	-	65	
PROJECT TOTALS		1145	2800	2180	65	

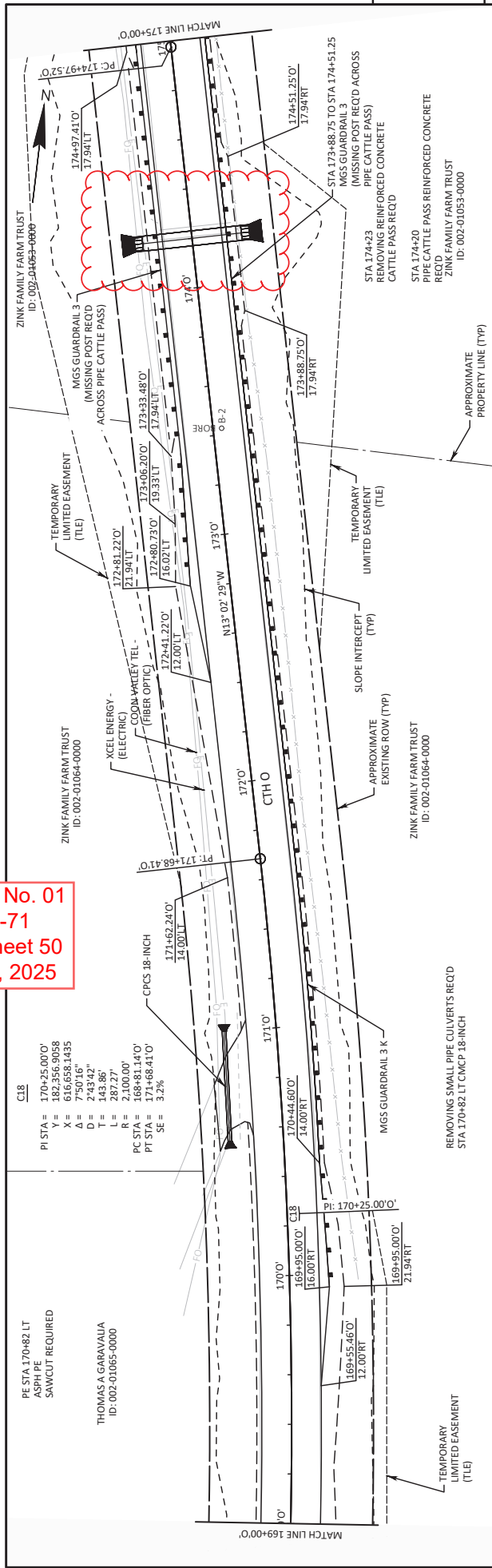
CULVERT PIPES

STATION	OFFSET	ELEV (FT)	STATION	OFFSET	ELEV (FT)	PIPE THICKNESS	LOCATION	504.0900 CONCRETE MASONRY ENDWALLS CY	521.3118 CULVERT PIPE CORRUGATED STEEL 18-INCH LF	521.3124 CULVERT PIPE CORRUGATED STEEL 24-INCH LF	521.3130 CULVERT PIPE CORRUGATED STEEL 30-INCH LF	521.1018 APRON ENDWALLS FOR CULVERT PIPESTEEL 18-INCH EACH	521.1024 APRON ENDWALLS FOR CULVERT PIPESTEEL 24-INCH EACH	521.1030 APRON ENDWALLS FOR CULVERT PIPESTEEL 30-INCH EACH	522.1500 PIPE CATTLE PASS REINFORCED CONCRETE LF	633.5200 MARKERS CULVERT END EACH
105+06	21.7 RT	1153.60	105+19	21.4 LT	1153.24	0.064"	LT&RT	-	45	-	-	-	-	-	-	2
112+73	20.6 LT	1132.20	113+02	23.4 LT	1129.20	0.064"	LT	-	30	-	-	2	-	-	-	-
113+09	24.9 LT	1129.00	113+45	20.9 LT	1126.00	0.064"	LT	-	36	-	-	2	-	-	-	-
117+72	21.6 LT	1094.73	117+88	25.7 RT	1091.96	0.064"	LT&RT	-	50	-	-	-	2	-	-	2
126+02	20.1 LT	1035.20	126+24	25.2 RT	1031.75	0.064"	LT&RT	-	50	-	-	-	2	-	-	2
137+60	21.4 LT	952.47	137+81	19.5 RT	950.95	0.064"	LT&RT	-	46	-	-	-	2	-	-	2
140+73	20.7 LT	932.72	140+96	20.0 RT	931.19	0.064"	LT&RT	-	47	-	-	-	2	-	-	2
143+53	19.6 LT	911.55	143+79	24.0 RT	906.60	0.064"	LT&RT	-	50	-	-	-	2	-	-	2
144+66	18.9 LT	901.20	144+72	21.8 RT	898.36	0.079"	LT&RT	-	-	-	41	-	-	2	-	2
145+32	21.5 LT	896.99	145+41	20.5 RT	893.79	0.079"	LT&RT	-	-	-	43	-	-	2	-	2
153+10	19.7 LT	843.00	153+21	20.9 RT	840.38	0.064"	LT&RT	-	42	-	-	-	2	-	-	2
157+22	20.9 LT	810.95	157+32	21.8 RT	808.50	0.079"	LT&RT	-	-	-	44	-	-	2	-	2
162+59	19.7 LT	771.50	162+85	26.8 RT	768.80	0.064"	LT&RT	-	53	-	-	-	2	-	-	2
170+85	34.0 RT	740.86	171+00	21.8 LT	740.75	0.064"	LT	-	44	-	-	2	-	-	-	2
174+20	20.0 LT	688.23	174+20	20.0 RT	687.77	1.15%	LT&RT	9	-	-	-	-	-	-	40	2
PROJECT TOTALS								110	383	128	6	16	6	40	24	

*ADDITIONAL ITEMS SHOWN ELSEWHERE IN PLANS

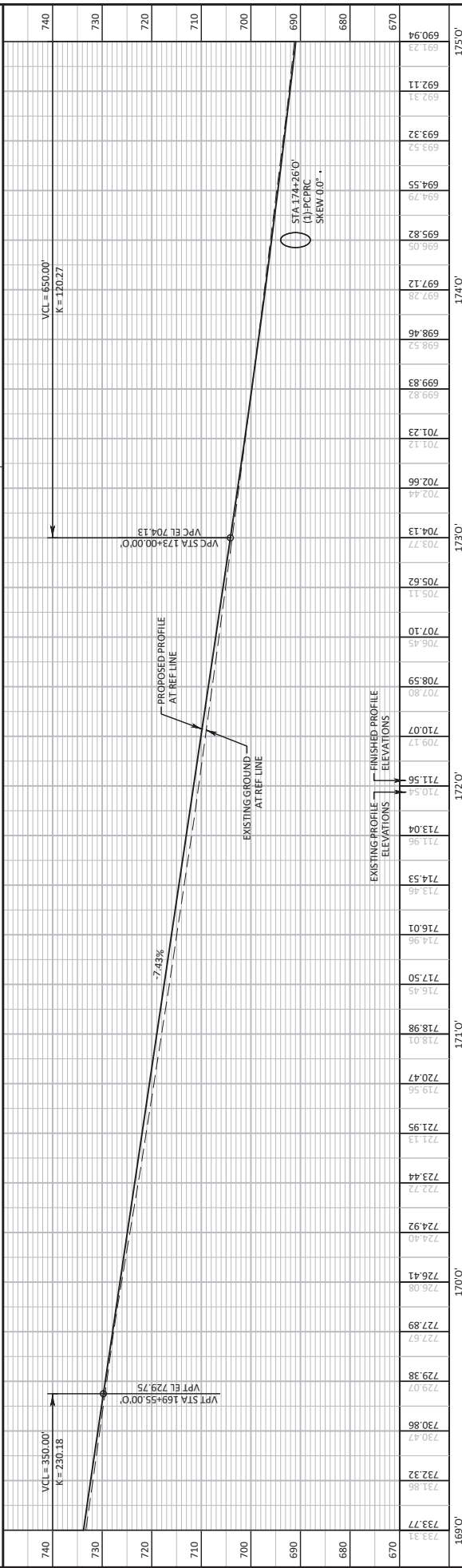
*** PIPE INVERT AND STATION/OFFSET AT END OF PIPE

**Addendum No. 01
ID 5537-00-71
Revised Sheet 50
February 3, 2025**



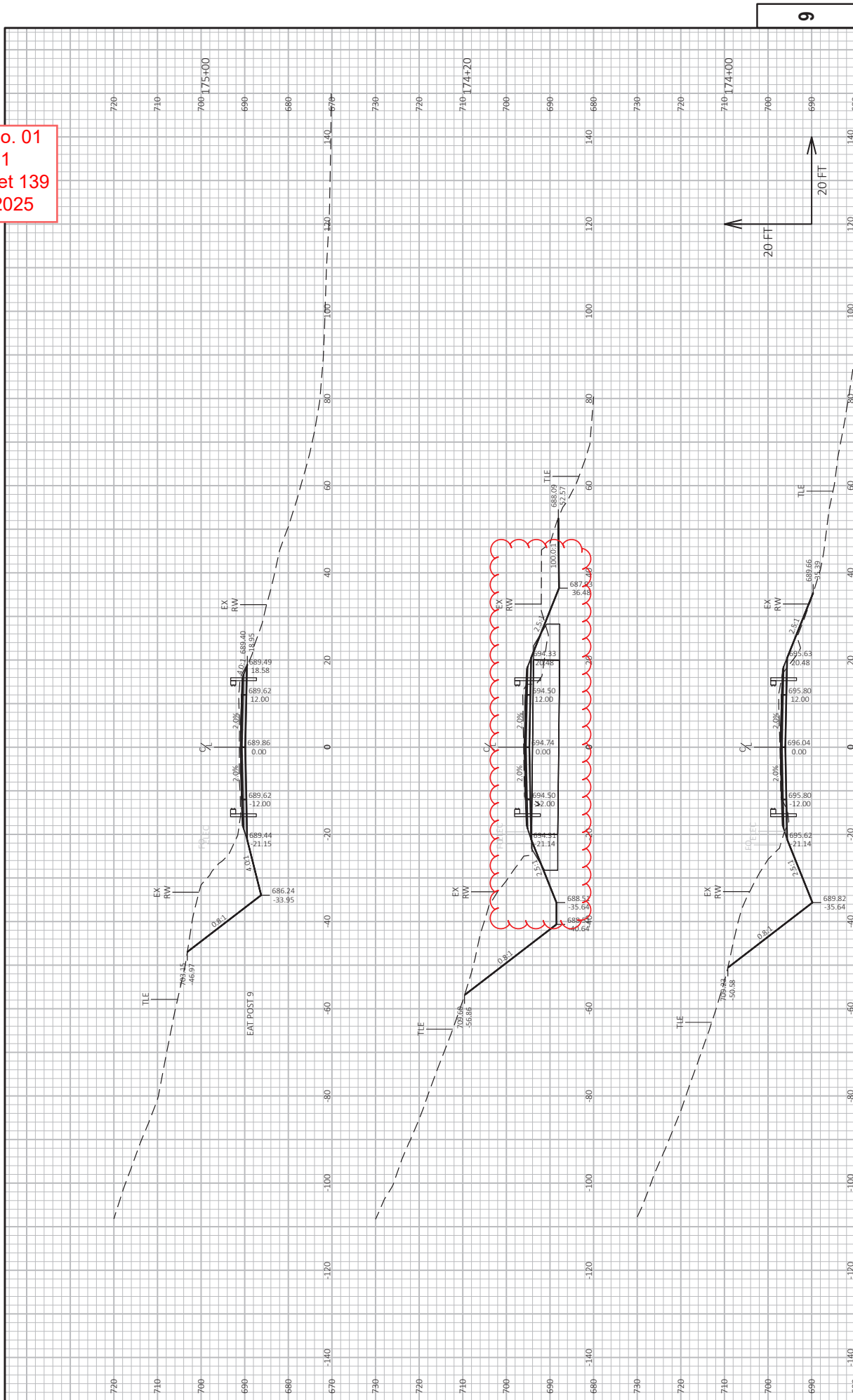
5

5



Station	Existing Profile Elevations	Finished Profile Elevations
169+00	733.77	733.77
169+10	731.96	731.96
169+20	733.04	733.04
169+30	711.56	711.56
169+40	710.59	710.59
169+50	708.59	708.59
169+60	706.45	706.45
169+70	707.10	707.10
169+80	705.11	705.11
169+90	705.62	705.62
170+00	704.13	704.13
170+10	702.44	702.44
170+20	702.66	702.66
170+30	701.12	701.12
170+40	699.82	699.82
170+50	698.83	698.83
170+60	698.46	698.46
170+70	697.26	697.26
170+80	695.82	695.82
170+90	694.79	694.79
171+00	694.55	694.55
171+10	693.32	693.32
171+20	692.31	692.31
171+30	691.11	691.11
171+40	690.94	690.94

Addendum No. 01
 ID 5537-00-71
 Revised Sheet 139
 February 3, 2025





Proposal Schedule of Items

Proposal ID: 20250211006 Project(s): 5537-00-71

Federal ID(s): WISC 2025305

SECTION: 0001 Contract Items

Alt Set ID: Alt Mbr ID:

Proposal Line Number	Item ID Description	Approximate Quantity and Units	Unit Price	Bid Amount
0032	465.0120 Asphaltic Surface Driveways and Field Entrances	9.000 TON	_____.	_____.
0034	521.1018 Apron Endwalls for Culvert Pipe Steel 18-Inch	6.000 EACH	_____.	_____.
0036	521.1024 Apron Endwalls for Culvert Pipe Steel 24-Inch	16.000 EACH	_____.	_____.
0038	521.1030 Apron Endwalls for Culvert Pipe Steel 30-Inch	6.000 EACH	_____.	_____.
0040	521.3118 Culvert Pipe Corrugated Steel 18-Inch	110.000 LF	_____.	_____.
0042	521.3124 Culvert Pipe Corrugated Steel 24-Inch	383.000 LF	_____.	_____.
0044	521.3130 Culvert Pipe Corrugated Steel 30-Inch	128.000 LF	_____.	_____.
0046	522.1024 Apron Endwalls for Culvert Pipe Reinforced Concrete 24-Inch	2.000 EACH	_____.	_____.
0048	522.1030 Apron Endwalls for Culvert Pipe Reinforced Concrete 30-Inch	1.000 EACH	_____.	_____.
0050	522.1500 Pipe Cattle Pass Reinforced Concrete	40.000 LF	_____.	_____.
0052	606.0300 Riprap Heavy	361.000 CY	_____.	_____.
0054	608.0324 Storm Sewer Pipe Reinforced Concrete Class III 24-Inch	92.000 LF	_____.	_____.
0056	608.0330 Storm Sewer Pipe Reinforced Concrete Class III 30-Inch	48.000 LF	_____.	_____.
0058	611.0642 Inlet Covers Type MS	6.000 EACH	_____.	_____.



Proposal Schedule of Items

Proposal ID: 20250211006 Project(s): 5537-00-71

Federal ID(s): WISC 2025305

SECTION: 0001 Contract Items

Alt Set ID: Alt Mbr ID:

Proposal Line Number	Item ID Description	Approximate Quantity and Units	Unit Price	Bid Amount
0156	740.0440 Incentive IRI Ride	6,280.000 DOL	1.00000	6,280.00
0158	ASP.1T0A On-the-Job Training Apprentice at \$5.00/HR	2,000.000 HRS	5.00000	10,000.00
0160	ASP.1T0G On-the-Job Training Graduate at \$5.00/HR	1,320.000 HRS	5.00000	6,600.00
0162	SPV.0060 Special 01. Utility Line Opening	5.000 EACH	_____	_____
0164	504.0900 Concrete Masonry Endwalls	9.000 CY	_____	_____
Section: 0001			Total:	_____
			Total Bid:	_____

