



Wisconsin Department of Transportation

February 7, 2025

Division of Transportation Systems Development

Bureau of Project Development
4822 Madison Yards Way, 4th Floor South
Madison, WI 53705

Telephone: (608) 266-1631
Facsimile (FAX): (608) 266-8459

NOTICE TO ALL CONTRACTORS:

Proposal #12: 5991-07-61, WISC 2025311
City of La Crosse, 6th Street
Cass Street to State Street
Local Street
La Crosse County

5991-07-62
City of La Crosse, 6th Street
Cass Street to State Street
Local Street
La Crosse County

Letting of February 11, 20255

This is Addendum No. 01, which provides for the following:

Plan Sheets:

Revised Plan Sheets	
Plan Sheet	Plan Sheet Title (brief description of changes to sheet)
07	Updated construction details to current City of La Crosse details
09	Updated construction details to current City of La Crosse details

The responsibility for notifying potential subcontractors and suppliers of these changes remains with the prime contractor.

Sincerely,

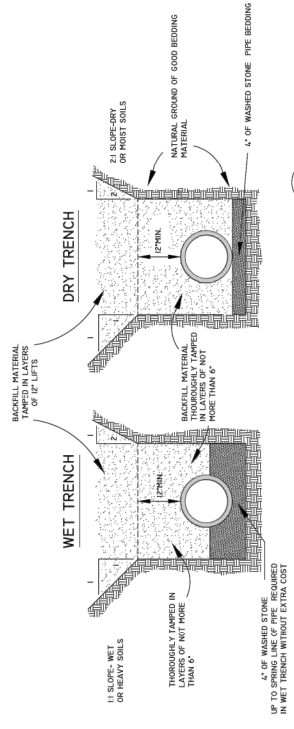
Mike Coleman

Proposal Development Specialist
Proposal Management Section

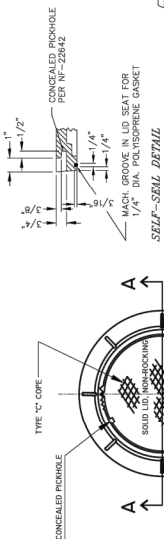
END OF ADDENDUM

DRAWING
NOT TO SCALE

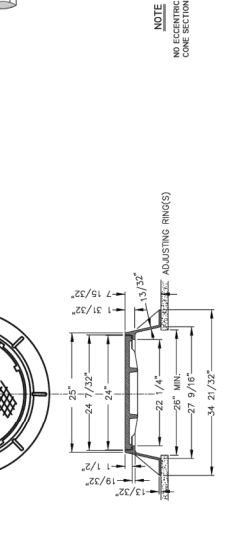
SEWER PIPE JOINT MATERIALS
CONCRETE PIPE-RUBBER GASKET (ASTM C-443)
PVC PIPE-ELASTOMERIC GASKET (ASTM D-3022 & F-417)



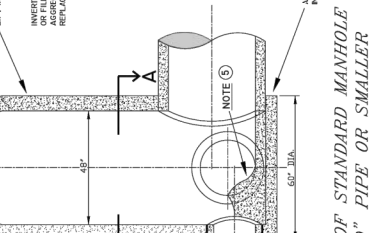
A
D-2
DETAILS OF SEWER TRENCHES



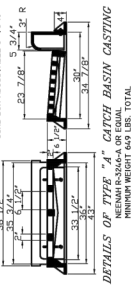
B
D-2
DETAIL OF MANHOLE FRAME & COVER



C
D-2
DETAILS OF STANDARD MANHOLE FOR 30" PIPE OR SMALLER



D
D-2
DETAILS OF STANDARD MANHOLE FOR 36" PIPE OR LARGER

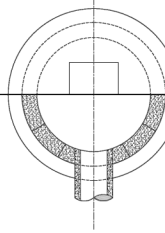


F
D-2
DETAILS OF TYPE 'A' CATCH BASIN CASTING

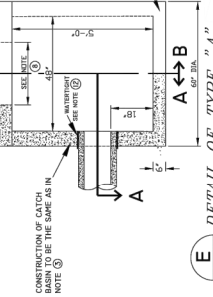
Addendum No. 01
ID 5991-07-61
Revised Sheet 7
February 7, 2025

NOTE:
* DUMP NO WASTE
DRAINS TO RIVER
SHALL BE HOLED IN ALL CASTINGS FACE

NOTE ⑥
RECTANGULAR OPENING IN TOP:
"A" TYPE CASTING - 36" X 50"
"C" TYPE CASTING - 48" X 72"
MINIMUM WEIGHT 400 LBS. TOTAL



NOTE ④
TOP OF CATCH BASIN TO BE 12" BELOW FINISHED GRADE. TOP OF CATCH BASIN TO BE 12" BELOW FINISHED GRADE. TOP OF CATCH BASIN TO BE 12" BELOW FINISHED GRADE.



E
D-2
DETAIL OF TYPE 'A' CATCH BASIN

STORM SEWER DETAILS
D-2

ENGINEERING DEPT.
City of LaCrosse, Wis.

NO.	DATE	BY	CHKD.
1	10/11/11	WJG	WJG
2	10/11/11	WJG	WJG
3	10/11/11	WJG	WJG
4	10/11/11	WJG	WJG
5	10/11/11	WJG	WJG
6	10/11/11	WJG	WJG
7	10/11/11	WJG	WJG
8	10/11/11	WJG	WJG
9	10/11/11	WJG	WJG
10	10/11/11	WJG	WJG
11	10/11/11	WJG	WJG
12	10/11/11	WJG	WJG
13	10/11/11	WJG	WJG
14	10/11/11	WJG	WJG
15	10/11/11	WJG	WJG
16	10/11/11	WJG	WJG
17	10/11/11	WJG	WJG
18	10/11/11	WJG	WJG
19	10/11/11	WJG	WJG
20	10/11/11	WJG	WJG
21	10/11/11	WJG	WJG
22	10/11/11	WJG	WJG
23	10/11/11	WJG	WJG
24	10/11/11	WJG	WJG
25	10/11/11	WJG	WJG
26	10/11/11	WJG	WJG
27	10/11/11	WJG	WJG
28	10/11/11	WJG	WJG
29	10/11/11	WJG	WJG
30	10/11/11	WJG	WJG
31	10/11/11	WJG	WJG
32	10/11/11	WJG	WJG
33	10/11/11	WJG	WJG
34	10/11/11	WJG	WJG
35	10/11/11	WJG	WJG
36	10/11/11	WJG	WJG
37	10/11/11	WJG	WJG
38	10/11/11	WJG	WJG
39	10/11/11	WJG	WJG
40	10/11/11	WJG	WJG
41	10/11/11	WJG	WJG
42	10/11/11	WJG	WJG
43	10/11/11	WJG	WJG
44	10/11/11	WJG	WJG
45	10/11/11	WJG	WJG
46	10/11/11	WJG	WJG
47	10/11/11	WJG	WJG
48	10/11/11	WJG	WJG
49	10/11/11	WJG	WJG
50	10/11/11	WJG	WJG
51	10/11/11	WJG	WJG
52	10/11/11	WJG	WJG
53	10/11/11	WJG	WJG
54	10/11/11	WJG	WJG
55	10/11/11	WJG	WJG
56	10/11/11	WJG	WJG
57	10/11/11	WJG	WJG
58	10/11/11	WJG	WJG
59	10/11/11	WJG	WJG
60	10/11/11	WJG	WJG
61	10/11/11	WJG	WJG
62	10/11/11	WJG	WJG
63	10/11/11	WJG	WJG
64	10/11/11	WJG	WJG
65	10/11/11	WJG	WJG
66	10/11/11	WJG	WJG
67	10/11/11	WJG	WJG
68	10/11/11	WJG	WJG
69	10/11/11	WJG	WJG
70	10/11/11	WJG	WJG
71	10/11/11	WJG	WJG
72	10/11/11	WJG	WJG
73	10/11/11	WJG	WJG
74	10/11/11	WJG	WJG
75	10/11/11	WJG	WJG
76	10/11/11	WJG	WJG
77	10/11/11	WJG	WJG
78	10/11/11	WJG	WJG
79	10/11/11	WJG	WJG
80	10/11/11	WJG	WJG
81	10/11/11	WJG	WJG
82	10/11/11	WJG	WJG
83	10/11/11	WJG	WJG
84	10/11/11	WJG	WJG
85	10/11/11	WJG	WJG
86	10/11/11	WJG	WJG
87	10/11/11	WJG	WJG
88	10/11/11	WJG	WJG
89	10/11/11	WJG	WJG
90	10/11/11	WJG	WJG
91	10/11/11	WJG	WJG
92	10/11/11	WJG	WJG
93	10/11/11	WJG	WJG
94	10/11/11	WJG	WJG
95	10/11/11	WJG	WJG
96	10/11/11	WJG	WJG
97	10/11/11	WJG	WJG
98	10/11/11	WJG	WJG
99	10/11/11	WJG	WJG
100	10/11/11	WJG	WJG

