



Wisconsin Department of Transportation

Division of Transportation Systems Development

Bureau of Project Development
4822 Madison Yards Way, 4th Floor South
Madison, WI 53705

February 6, 2025

Telephone: (608) 266-1631
Facsimile (FAX): (608) 266-8459

NOTICE TO ALL CONTRACTORS:

Proposal #17: 2652-05-70
C Milwaukee, Water St
Milwaukee River Bridge B40-548
Local Street
Milwaukee County

Letting of February 11, 2025

This is Addendum No. 01, which provides for the following:

Special Provisions:

Revised Special Provisions	
Article No.	Description
38	Centerlock Maintenance, Item SPV.0060.563

Schedule of Items:

Revised Bid Item Quantities					
Bid Item	Item Description	Unit	Proposal Total Prior to Addendum	Proposal Quantity Change (-)	Proposal Total After Addendum
SPV.0165.501	Fiberglass Sidewalk Floor Plates	SF	1072	856	1928

Plan Sheets:

Revised Plan Sheets	
Plan Sheet	Plan Sheet Title (brief description of changes to sheet)
62	Total Estimated Quantities- The SF quantity of the Fiberglass Sidewalk Floor Plates in the plan revised.
65	Rear Brake Expansion Joint- The rear brake weld detail added to the plan. The rear brake should contain no more than 4 segments.

The responsibility for notifying potential subcontractors and suppliers of these changes remains with the prime contractor.

Sincerely,

Mike Coleman

Proposal Development Specialist
Proposal Management Section

ADDENDUM NO. 01

2652-05-70

February 6, 2025

Special Provisions

38. Centerlock Maintenance, Item SPV.0060.563

Replace paragraph one under section titled B.2 Paint for Centerlock with the following:

Clean and paint all surfaces of centerlocks in place under bid item 517.1801.S Structure Repainting Recycled Abrasive.

Schedule of Items

Attached, dated February 6, 2025, are the revised Schedule of Items Page 5.

Plan Sheets

The following 8½ x 11-inch sheets are attached and made part of the plans for this proposal:

Revised: 62, 65

END OF ADDENDUM

GENERAL NOTES

ALL STATIONS AND ELEVATIONS ARE IN FEET.
ELEVATIONS ARE REFERRED TO CITY OF MILWAUKEE DATUM = 580.60 MNOVD.
DIMENSIONS SHOWN ARE BASED ON THE ORIGINAL STRUCTURE PLANS.
DRAWINGS SHALL NOT BE SCALED. BAR STEEL REINFORCEMENT SHALL BE EMBEDDED 2" CLEAR UNLESS OTHERWISE SHOWN OR NOTED.
THE FIRST OR FIRST TWO DIGITS OF THE BAR MARK SIGNIFIES THE BAR SIZE. BAR DIMENSIONS ARE OUT TO OUT OF BAR.
UTILIZE EXISTING BAR STEEL REINFORCEMENT WHERE SHOWN AND EXTEND 24 BAR DIAMETERS INTO NEW WORK UNLESS SPECIFIED OTHERWISE.
VARIATIONS FROM EXISTING PROFILE OVER 1/2" MUST BE SUBMITTED BY THE FIELD ENGINEER TO THE STRUCTURES DESIGNER FOR REVIEW.
ALL EXISTING SUPERSTRUCTURE STEEL, SUBSTRUCTURE STEEL, MACHINERY UNDER AND OVER BRIDGES SHALL BE REPAIRED AND REPAINTED TO MEET THE REQUIREMENTS OF THE WISCONSIN STANDARD PERMIT VEHICLE (WIS-SPV) = 250 KIPS. B-40-548, 517-801S "STRUCTURE REPAINTING RECYCLED ABRASIVE B-40-548", AND 517-4501S "NEGATIVE PRESSURE CONTAINMENT AND COLLECTION OF WASTE MATERIALS B-40-548".
EXISTING CONDUITS AND JUNCTION BOXES SHALL BE REPLACED UNDER BID ITEM SPV.0060.562 "BRIDGE ELECTRICAL WORK".
PAINT FOR ALL STEEL TO MATCH AMS STANDARD NO.595A COLOR NO.2009S.
CONCRETE REMOVALS SHALL BE DEFINED BY A 1-INCH DEEP SAWCUT.
THE LOCATIONS OF EXISTING UTILITY INSTALLATIONS AS SHOWN ON THE PLANS ARE APPROXIMATE, THERE MAY BE OTHER UTILITY INSTALLATIONS WITHIN THE PROJECT AREA THAT ARE NOT SHOWN.
ALL NEW OR EXISTING HOLES IN STEEL NOT BEING USED ARE TO BE FILLED WITH HIGH STRENGTH GALVANIZED BOLTS PRIOR TO STRUCTURAL PAINTING.
AMS BRIDGE WELDING CODE D15 LATEST EDITION.
AMS STRUCTURAL WELDING CODE - STEEL D11 LATEST EDITION.
FOR BENT PLATES, CONFORM TO ASTM A413 TO PREVENT EMBRITTEMENT CAUSED BY THE GALVANIZING PROCESS.
NEW STEEL SECTIONS SHALL BE GALVANIZED FOLLOWING ASTM A123.
NEW STEEL HARDWARE SHALL BE GALVANIZED FOLLOWING ASTM A153.
ALL FLAME CUT EDGES OF PLATES THAT WILL BE PAINTED SHALL BE GROUND OR PLANED TO REMOVE THE HARDENED SURFACE CAUSED BY THE FLAME. REMOVAL OF THIS SURFACE IS NECESSARY TO OBTAIN A PROPER BLASTED SURFACE FOR THE ADHESION OF THE PAINT.
AT CURB REPAIR REMOVE CONCRETE TO SOUND CONCRETE OR AT LEAST 1" BEHIND EXISTING REINFORCING STEEL.
CLEAN AND FILL EXISTING LONGITUDINAL AND TRANSVERSE CRACKS WITH PENETRATING EPOXY AS DIRECTED BY THE FIELD ENGINEER.
REQUIRED AS PART OF BID ITEM SPV.0060.562 "BRIDGE ELECTRICAL WORK":
REMOVE AND REPLACE 2" DIA. RIGID CONDUIT FEED CENTERLOCK LOCATED UNDER WEST SIDEWALK IN NORTH LEAF.
REMOVE AND REPLACE 1" DIA. RIGID CONDUIT IN UNDER SOUTH END OF NORTH LEAF.
REMOVE AND REPLACE 4"x4"x6" JUNCTION BOX MOUNTED TO STEEL COLUMN AT TRUNNION AT NORTH LEAF.
REMOVE AND REPLACE 9"x9"x6" JUNCTION BOX MOUNTED TO WEST BASCULE GIRDER AT TRUNNION AT NORTH LEAF.
REMOVE AND REPLACE EXISTING 2"-2" AND 2-1/2" DIA. ELECTRICAL CONDUITS AND ASSOCIATED EXISTING BRACKETS LOCATED AT SOUTH PIER WALL.
REMOVE AND REPLACE EXISTING 1/2" DIA. PVC ELECTRICAL CONDUIT FEEDING LIGHTS AT TOP OF SOUTH PIER WALL.
EXISTING BRIDGE PLANS ARE ON FILE:
INFRASTRUCTURE SERVICES DIVISION, STRUCTURAL PLANNING & DESIGN
FRANK P. ZEIDLER MUNICIPAL BUILDING
841 N. BROADWAY, ROOM 307
MILWAUKEE, WI 53202
PHONE (414) 288-0463

TOTAL ESTIMATED QUANTITIES

ITEM NO.	BID ITEM	UNIT	S. PIER WALL	S. PIER	N. PIER	N. PIER WALL	SUPER.	TOTAL
205.0260	REMOVING STRUCTURE OVER WATERWAY MINIMAL DEBRIS B-40-548	EACH					1	1
205.1001	EXCAVATION FOR STRUCTURES BRIDGES B-40-548	EACH					1	1
210.1500	BACKFILL STRUCTURE TYPE A	TON	86		86			172
602.2000	COMPRESSION JOINT SEALER PREFORMED ELASTOMERIC 1. 1/4-INCH	LF	60	60				120
502.3200	PROTECTIVE SURFACE TREATMENT	SY					404	404
502.3215	PROTECTIVE SURFACE TREATMENT RESEAL	SY					142	142
505.0600	BAR STEEL REINFORCEMENT HS COATED STRUCTURES	LB		525				1,050
505.0605	STRUCTURAL STEEL HS	LB					330	330
505.0610	PREPARATION DECKS TYPE 1	SY					3	3
505.0620	PREPARATION DECKS TYPE 2	SY					2	2
509.0310	SAWING PAVEMENT DECK PREPARATION AREAS	LF					60	60
509.1000	JOINT REPAIR	SY		14				28
509.1200	CURB REPAIR	LF					9	9
509.1500	CONCRETE SURFACE REPAIR	SF	51	28	16			105
509.2100	CONCRETE MASONRY DECK REPAIR	CY					9	9
509.9020	EPOXY CRACK SEALING	LF					535	535
509.9025	EPOXY INJECTION CRACK REPAIR	LF	39	154	69			416
509.9028	COBED HOLES 2-INCH DIAMETER	EACH	1	1	1			4
516.0500	RUBBERIZED MEMBRANE WATERPROOFING	SY	17		17			34
517.0501	PREPARATION AND COATING OF TOP FLANGES B-40-548	EACH					1	1
517.1801	STRUCTURE REPAINTING RECYCLED ABRASIVE B-40-548	EACH					1	1
517.4501	NEGATIVE PRESSURE CONTAINMENT AND COLLECTION OF WASTE MATERIALS B-40-548	EACH					1	1
517.6001	PORTABLE DECONTAMINATION FACILITY	EACH					1	1
SPV.0060.553	EXPANSION JOINTS AT REAR BREAK	EACH					2	2
SPV.0060.560	HEEL BLOCK REFURBISHMENT	EACH					1	1
SPV.0060.561	TRAFFIC GATES REPLACEMENT	EACH					4	4
SPV.0060.562	BRIDGE ELECTRICAL WORK	EACH					1	1
SPV.0060.563	CENTERLOCK ADJUSTMENTS	EACH					1	1
SPV.0060.565	ANCHOR ASSEMBLIES TRAFFIC GATES	EACH					4	4
SPV.0060.597	PROTECTING UTILITIES	EACH					1	1
SPV.0060.540	URETHANE INJECTION CRACK REPAIR	LF					20	20
SPV.0165.501	REMOVING AND REINSTALLING METAL PLATES FOR BIKE LANES	SF					1,928	1,928
SPV.0165.502	FIBERGLASS SIDEWALK FLOOR PLATES	SF					2,505	2,505
SPV.0165.596	POWER WASHING	SF	885	1,353	2,170	216		7,129
	NON-BID ITEMS							
	FELT JOINT FILLER 1-INCH							
	NON-BITUMINOUS JOINT FILLER							

SCOPE OF WORK
SANDBLAST AND PAINT STEEL AT BASCULE SPANS AND PIT SPANS INCLUDING BUT NOT LIMITED TO GRIDDERS, FLOORBEAMS, STRINGERS, COLUMNS AND TRUSSES AT PIERS, PURLINS, GRATING, CHANNELS, LATERAL BRACING, BRIDGE DECKS, AND TRUSSES AT BOTH SIDES OF BASCULE SPAN DURING PAINTING OPERATIONS AND REINSTALLING.)
INSTALL NEW TRAFFIC GATES.
CENTERLOCK MAINTENANCE.
REMOVE EXISTING 1/2" ALUMINUM SIDEWALK PLATES AND REPLACE WITH 3/8" FIBERGLASS PLATES.
POWER WASH CONCRETE PARAPETS AND ALUMINUM RAIL.
CONCRETE SURFACE REPAIRS AND EPOXY INJECTION AS SHOWN ON PLANS.
INSTALL NEW EXPANSION JOINTS AT REAR BREAKS.
DESIGN DATA
CONCRETE SUPERSTRUCTURE ... f'c = 4000 PSI
CONCRETE SUBSTRUCTURE ... f'c = 3500 PSI
BAR STEEL REINFORCEMENT ... fy = 60,000 PSI
STRUCTURAL STEEL ... fy = 50,000 PSI
LIVE LOAD
INVENTORY RATING: HS-14
OPERATING RATING: HS-24
WISCONSIN STANDARD PERMIT VEHICLE (WIS-SPV) = 250 KIPS
TRAFFIC DATA
ADT (2023) = 16,778
ADT (2045) = 17,531
R.D.S. = 30 MPH
HYDRAULIC DATA
100 YEAR FREQUENCY = 26,700 C.F.S. (SEWRFPC) HW10 = EL. 3.22
VEL.100 = 5.48 F.P.S. (SEWRFPC)
HW.100 = EL. 4.46
WATERWAY AREA = NA
DRAINAGE AREA = NA
ROADWAY OVERTOPPING = 872 SQ. MI.
SCOUR CRITICAL CODE = 8
UTILITIES
EXISTING UTILITIES ARE TO BE KEPT IN SERVICE AND PROTECTED DURING THE REHABILITATION PROJECT. SEE PROJECT SPECIAL PROVISION FOR DETAILS ON UTILITY WORK.
LOCATIONS OF EXISTING UTILITY INSTALLATIONS AS SHOWN ON PLANS ARE APPROXIMATE. THERE MAY BE OTHER UTILITY INSTALLATIONS WITHIN PROJECT AREA THAT ARE NOT SHOWN.
REMOVE THE ABANDONED GREASE LINE UNDER EAST SIDE OF NORTH LEAF AT MOVABLE SPAN.
REPLACE AND REATTACH NEW UTILITY HANGER RODS IN CONFLICT WITH CONCRETE SURFACE REPAIR IN UNDERSIDE OF APPROACH CONCRETE DECK.
PROTECT EXISTING ELECTRICAL CONDUIT AT RAILING AT SOUTH PIER.
PROTECT UTILITIES AT SOUTH AND NORTH PIER WALLS AND IN UNDERSIDE OF SOUTH AND NORTH APPROACH CONCRETE DECKS.
PROTECT FURNACE HEATER LOCATED AT EAST SIDE OF NORTH PIER.

Addendum No. 01
ID 2652-05-70
Revised Sheet 62
February 6, 2025

02/06/25

REVISION
NO. DATE

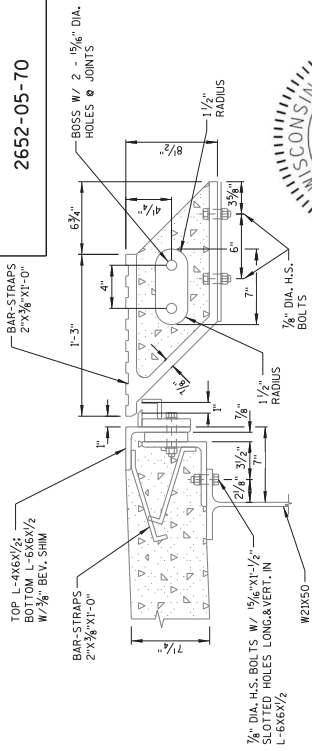
STATE OF WISCONSIN
DEPARTMENT OF TRANSPORTATION

STRUCTURE B-40-548

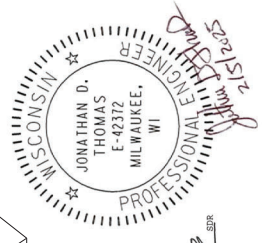
PLANS
M.I.P.
BY

TOTAL ESTIMATED QUANTITIES
SHEET 3 OF 27

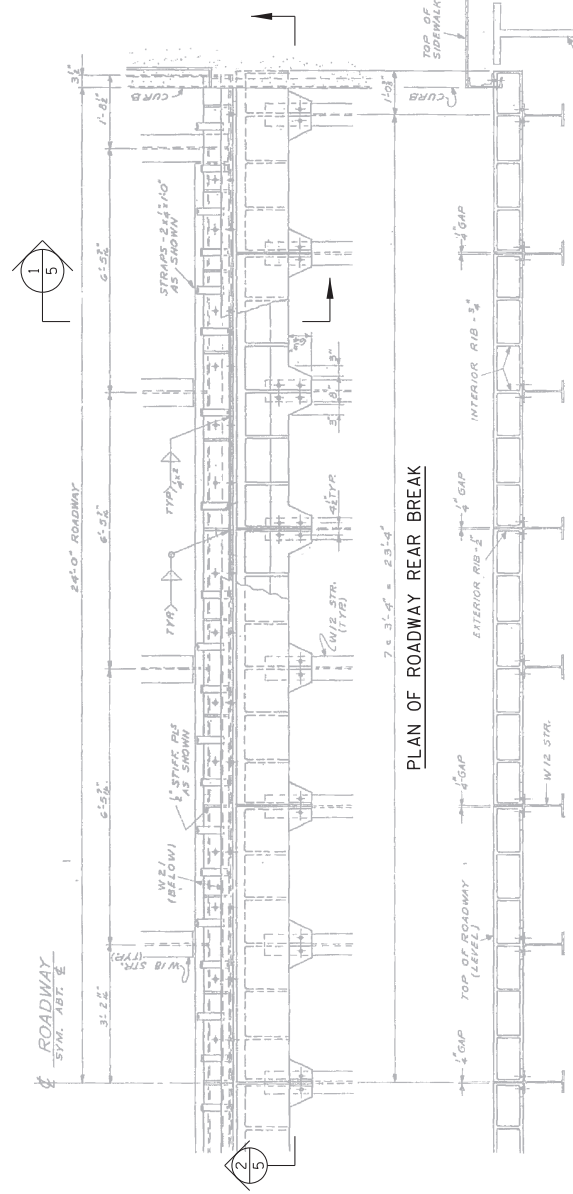
STATE PROJECT NUMBER
2652-05-70



**EXISTING REAR BREAK
EXPANSION JOINT DETAIL**

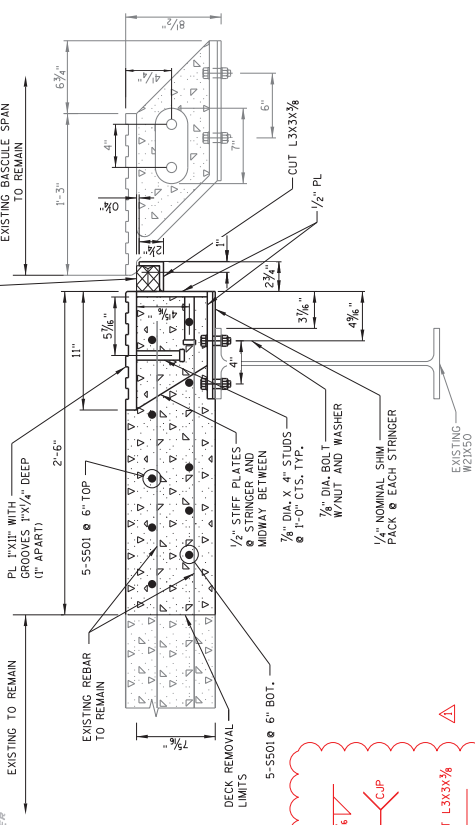


[Signature]
02/06/25



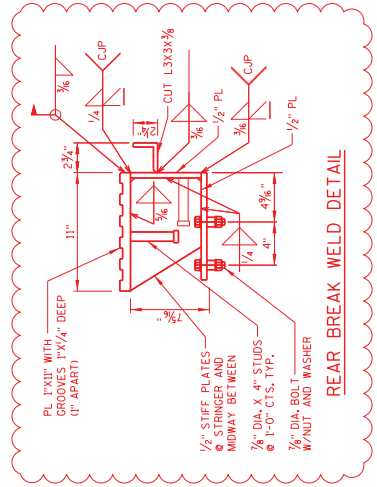
PLAN OF ROADWAY REAR BREAK

SECTION 2



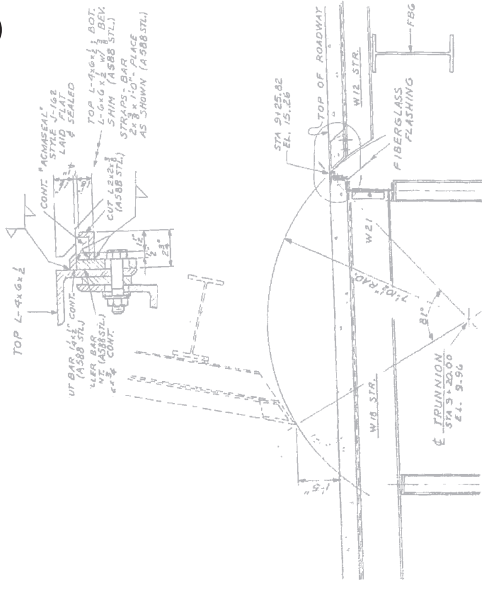
**PROPOSED REAR BREAK
EXPANSION JOINT DETAIL**

**Addendum No. 01
ID 2652-05-70
Revised Sheet 65
February 6, 2025**



REAR BREAK WELD DETAIL

SECTION 1



NO.	DATE	REVISION	SSR
1	2/5/25	ADDENDUM NO. 1 WELD DETAILS	

STATE OF WISCONSIN
DEPARTMENT OF TRANSPORTATION

STRUCTURE **B-40-548**

REAR BREAK
EXPANSION JOINT
DETAIL

NOTE:
SANDBLAST AND PAINT ALL
EXISTING STEEL

PLOT NAME: B0101_2025_06_REAR-BREAK-EXPANSION JOINT DETAIL_REV1.dgn

PLOT BY:

PLOT DATE: 2/5/2025

FILE NAME: W:\ST\B0101_2025_Rehab\Project\Plans\B0101_2025_06_REAR-BREAK-EXPANSION JOINT DETAIL_REV1.dgn



Proposal Schedule of Items

Proposal ID: 20250211017 Project(s): 2652-05-70

Federal ID(s): WISC 2025315

SECTION: 0001 Contract Items

Alt Set ID: Alt Mbr ID:

Proposal Line Number	Item ID Description	Approximate Quantity and Units	Unit Price	Bid Amount
0120	SPV.0165 Special 501. Removing and Reinstalling Metal Plates for Bike Lanes	909.000 SF	_____.	_____.
0122	SPV.0165 Special 502. Fiberglass Sidewalk Floor Plates	1,928.000 SF	_____.	_____.
0124	SPV.0165 Special 596. Power Washing	7,129.000 SF	_____.	_____.
Section: 0001			Total:	_____.
			Total Bid:	_____.

