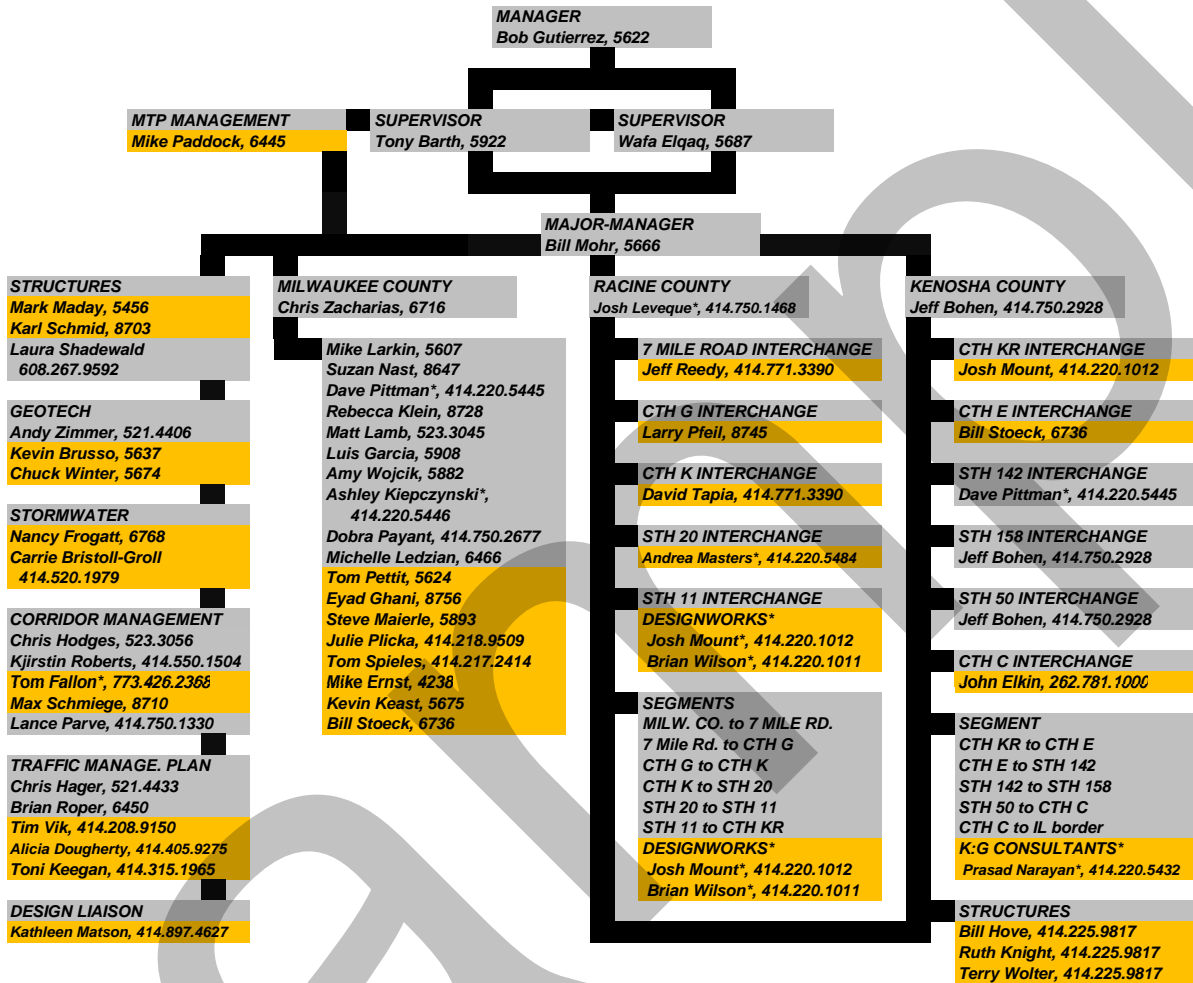


**NORTH - SOUTH CORRIDOR PROJECT
RESPONSIBILITY CHART AND PHONE NUMBERS
WISDOT AND CONSULTANT TEAMS**



DESIGN



*HOUSED AT MILWAUKEE ST. PAUL OFFICE
FRONT DESK # 414.227.2072

BARSTOW PREFIX: (262) 548 unless noted

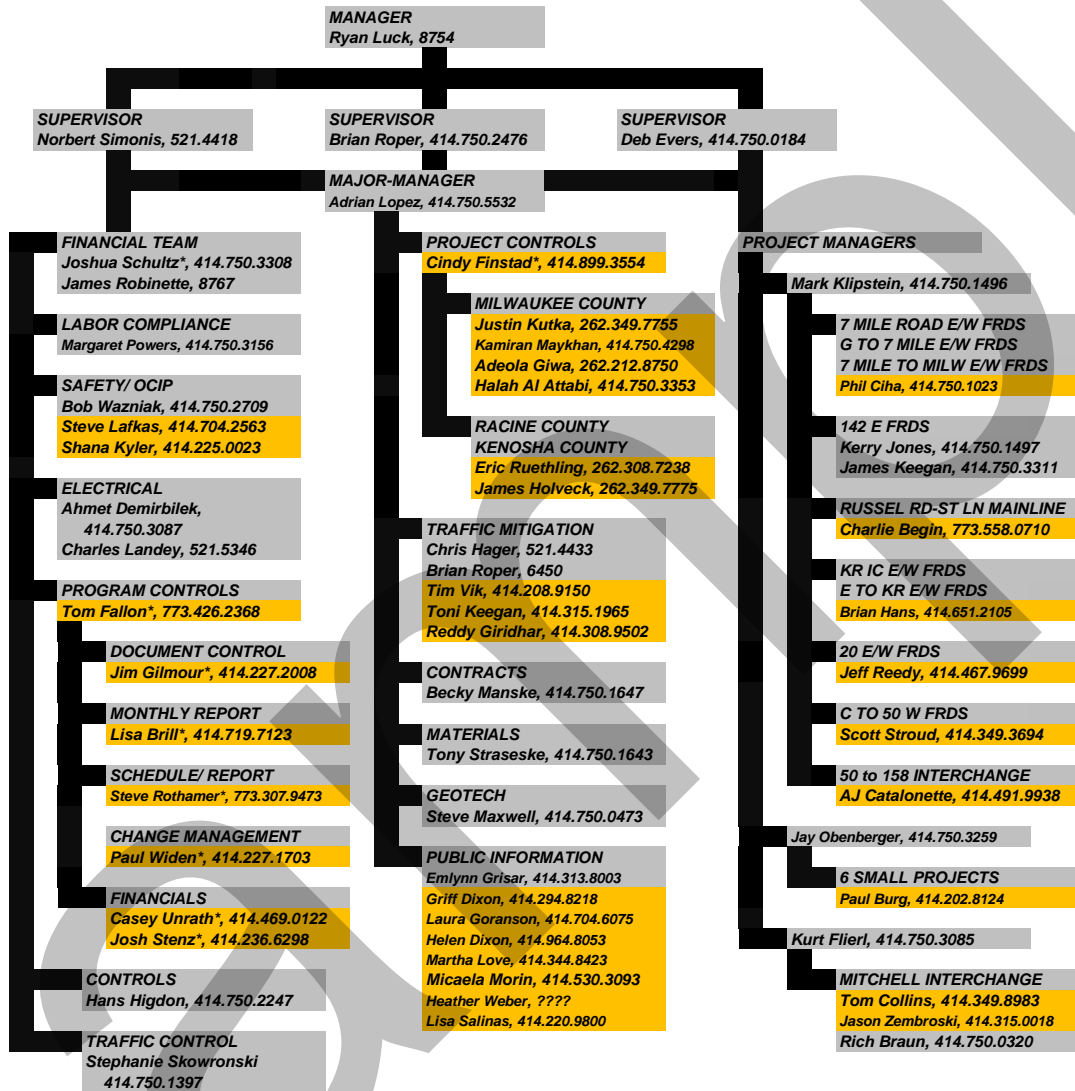
CONSULTANT STAFF
S:\DOT\MISCW-S Resp Phone MMDDYY.xls
GOOD THROUGH DEC 11



**NORTH - SOUTH CORRIDOR PROJECT
RESPONSIBILITY CHART AND PHONE NUMBERS
WISDOT AND CONSULTANT TEAMS**



CONSTRUCTION



*HOUSED AT MILWAUKEE ST. PAUL OFFICE
FRONT DESK # 414.227.2072

BARSTOW PREFIX: (262) 548 unless noted

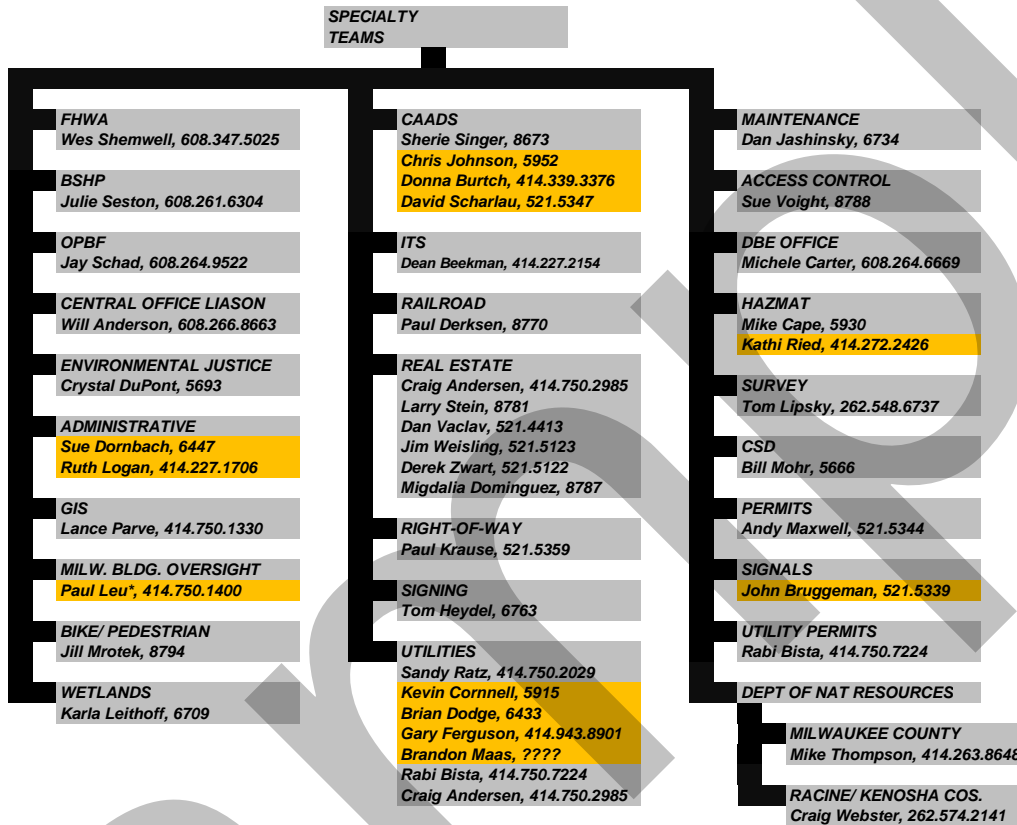
CONSULTANT STAFF
S:\DOT\MISC\W-S Resp Phone MDDYY.xls
GOOD THROUGH DEC 11



**NORTH - SOUTH CORRIDOR PROJECT
RESPONSIBILITY CHART AND PHONE NUMBERS
WISDOT AND CONSULTANT TEAMS**



SPECIALTY TEAMS



*HOUSED AT MILWAUKEE ST. PAUL OFFICE
FRONT DESK # 414.227.2072

BARSTOW PREFIX: (262) 548 unless noted

CONSULTANT STAFF

S:\DOT\MISC\W-S Resp Phone MMDDYY.xls
GOOD THROUGH DEC 11

