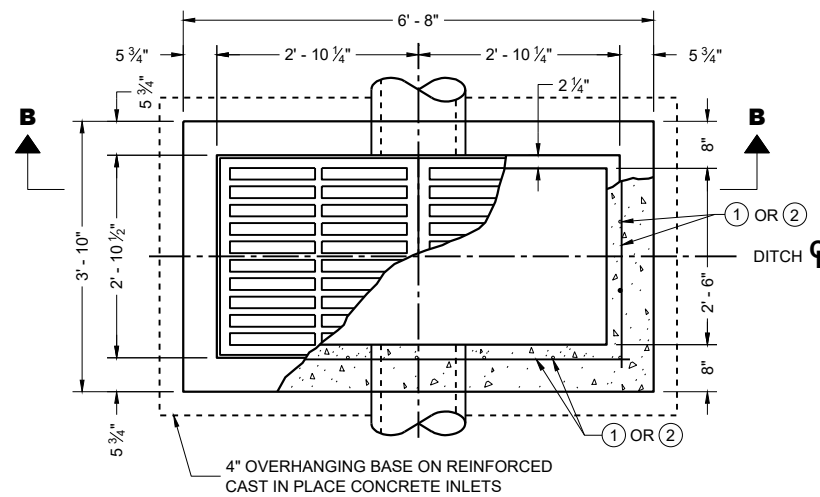
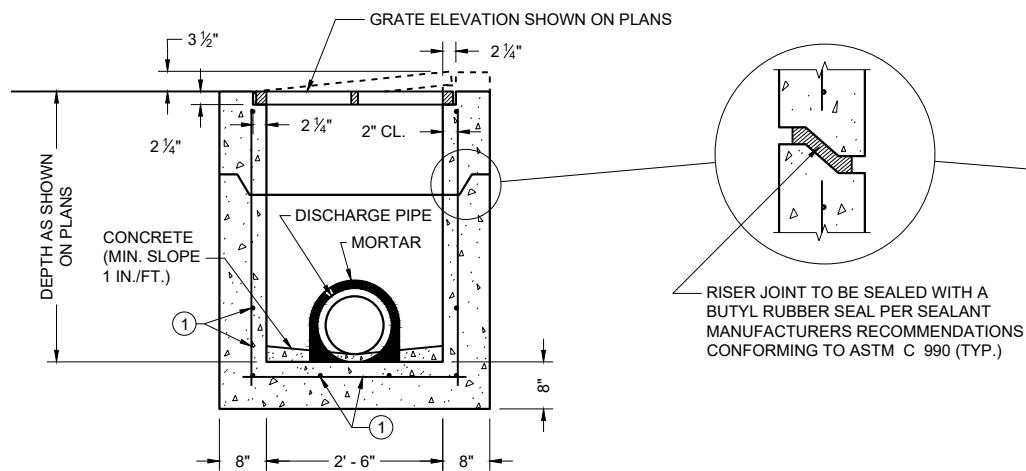
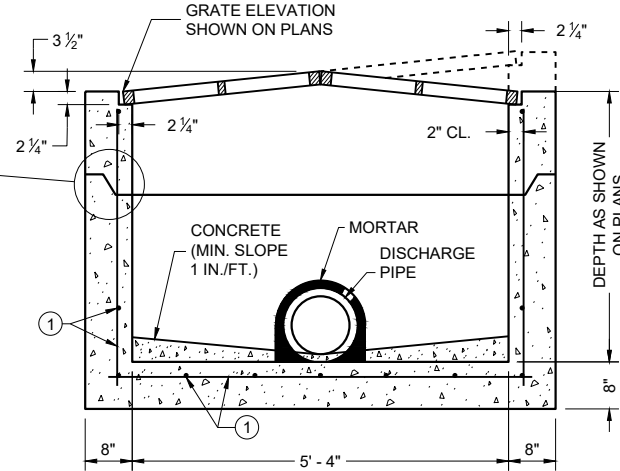
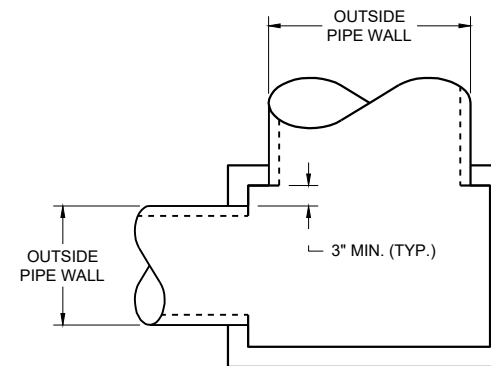


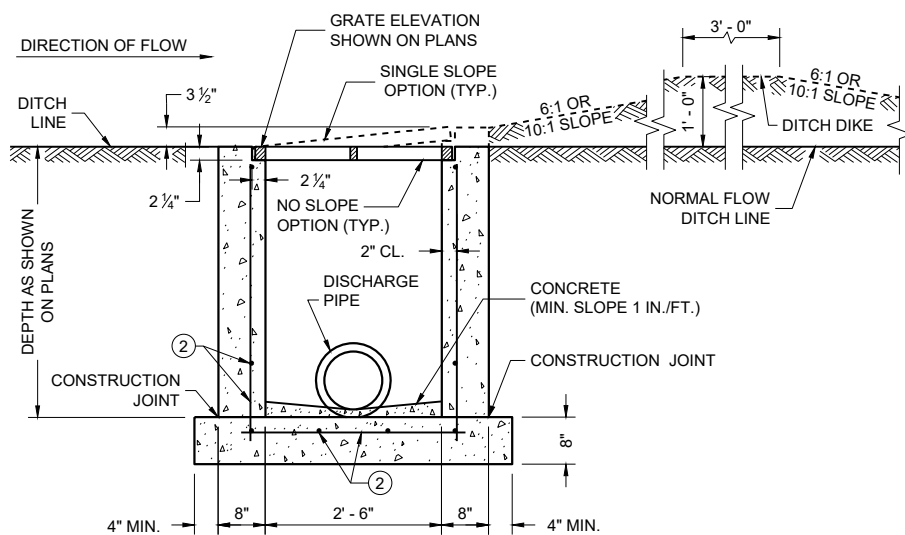
PLAN VIEW



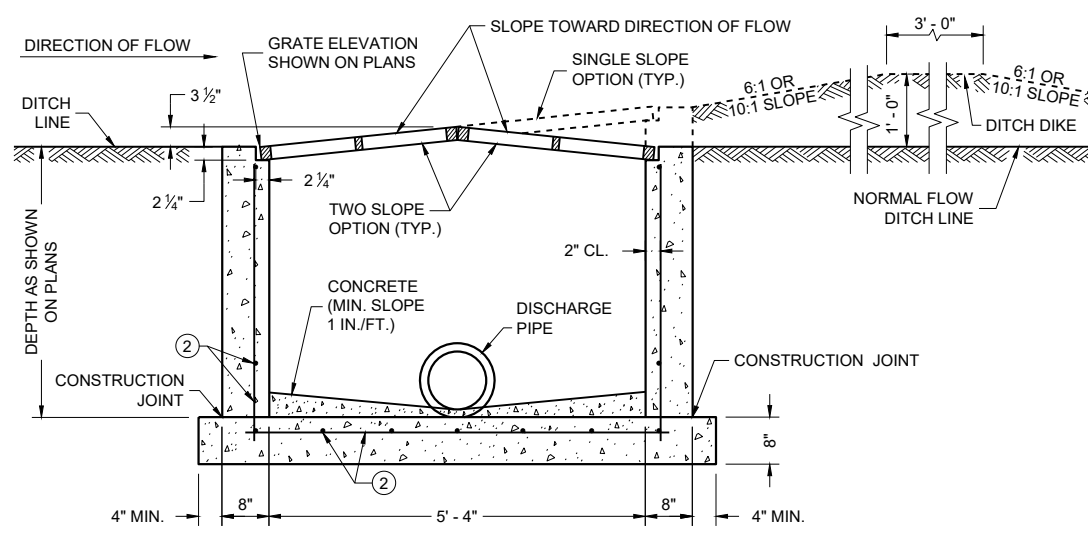
PLAN VIEW

PRECAST REINFORCED CONCRETE
SECTION A - APRECAST REINFORCED CONCRETE
SECTION B - B

DETAIL "A"

REINFORCED CAST IN PLACE CONCRETE
SECTION A - A

INLETS MEDIAN 1 GRATE

REINFORCED CAST IN PLACE CONCRETE
SECTION B - B

INLETS MEDIAN 2 GRATE

GENERAL NOTES

DETAILS OF CONSTRUCTION, MATERIALS AND WORKMANSHIP NOT SHOWN ON THIS DRAWING SHALL CONFORM TO THE PERTINENT REQUIREMENTS OF THE STANDARD SPECIFICATIONS AND THE APPLICABLE SPECIAL PROVISIONS.

UNLESS OTHERWISE AUTHORIZED IN WRITING BY THE ENGINEER, THE CONTRACTOR SHALL NOT ORDER AND DELIVER PRECAST INLET UNITS REQUIRED FOR THE PROJECT UNTIL A LIST OF SIZES IS FURNISHED BY THE ENGINEER.

DETAILED DRAWINGS FOR PROPOSED ALTERNATE DESIGNS FOR INLETS WHICH MAY INCLUDE PRECAST REINFORCED CONCRETE INLETS, SHALL BE SUBMITTED TO THE ENGINEER FOR APPROVAL PROVIDING THAT SUCH ALTERNATE DESIGNS MAKE PROVISION FOR EQUIVALENT CAPACITY AND STRENGTH.

ALL MEDIAN INLETS ARE DESIGNATED ON THE PLANS AS "INLETS, 1G-MS", ETC. THE FIRST NUMBER AND LETTER DESIGNATE THE TYPE OF STRUCTURE, AND THE FOLLOWING LETTERS DESIGNATE THE TYPE OF COVER TO BE USED TO COMPRISE THE COMPLETE UNIT.

BASES SHALL BE PLACED ON A BED OF MATERIAL AT LEAST 6 INCHES IN DEPTH, WHICH MEETS THE REQUIREMENTS OF FOUNDATION BACKFILL. THIS BEDDING SHALL BE COMPACTED AND PROVIDE UNIFORM SUPPORT FOR THE ENTIRE AREA OF THE BASE.

ALL PRECAST INLET UNITS SHALL CONFORM TO THE PERTINENT REQUIREMENTS OF ASTM C 913.

ALL BAR STEEL REINFORCEMENT SHALL BE EMBEDDED 2 INCHES CLEAR UNLESS OTHERWISE SHOWN OR NOTED.

PRECAST REINFORCED RISERS SHALL HAVE A TONGUE AND GROOVE JOINT WITH TONGUE UP OR DOWN.

MAXIMUM INSIDE PIPE DIAMETER DETERMINED BY 3" CLEARANCE ON EACH SIDE OF THE OUTSIDE WALL OF THE PIPE. SEE DETAIL "A". ASSUMES PIPE ENTERS PERPENDICULAR TO THE STRUCTURE.

- ① FOR PRECAST INLETS AND REINFORCED CONCRETE BASES PROVIDE REINFORCING STEEL IN ACCORDANCE TO ASTM C 913.
- ② CONTRACTOR TO PROVIDE DRAWING(S) STAMPED BY A PROFESSIONAL ENGINEER FOR STEEL REINFORCING DESIGN FOR CAST-IN-PLACE STRUCTURES.

PIPE MATRIX

INLET SIZE	MAXIMUM INSIDE PIPE DIAMETER	
	WIDTH (IN)	LENGTH (IN)
1 GRATE	18	18
2 GRATE	18	42

INLETS
MEDIAN 1 AND 2 GRATE

STATE OF WISCONSIN
DEPARTMENT OF TRANSPORTATION

APPROVED

December 2023
DATE

/S/ Rodney Taylor
ROADWAY STANDARDS DEVELOPMENT
UNIT SUPERVISOR

FHWA

*Inlets Median 1 and 2 Grate***References:**[FDM 13-25-30](#)**Bid items associated with this drawing:**

<u>ITEM NUMBER</u>	<u>DESCRIPTION</u>	<u>UNIT</u>
611.3901	Inlets Median 1 Grate.....	EACH
611.3902	Inlets Median 2 Grate.....	EACH
611.0642	Inlets Cover Type MS.....	EACH
611.0645	Inlets Cover Type MS-A	EACH

Standardized Special Provisions associated with this drawing:

<u>STSP NUMBER</u>	<u>TITLE</u>
NONE	

Other SDDs associated with this drawing:[SDD 8A5](#) Inlet cover sheet "b".**Design Notes:**

A pipe matrix on the front side of this SDD provides guidance for selecting the maximum inside pipe diameter. The inside pipe diameter was determined by the pipe entering perpendicular to the structure at 90°. Pipes entering as a skewed angle should be evaluated on a case by case basis.

For Inlets Median 1 Grate, the designer must specify the slope of the inlet cover as either single slope or no slope.

For Inlets Median 2 Grate, the designer must specify the slope of the two inlet covers as either single slope, two different slopes or no slope.

Designer must specify either a MS or MS-A inlet cover.

Inlets Median 1 and 2 Grate with MS or MS-A covers shall not be used in paved areas with traffic.

Grates shall be sloped no greater than 10 to 1.

Ditch Dikes shall be sloped at:

6:1 for design speeds less than 60 m.p.h.

10:1 for design speeds greater than or equal to 60 m.p.h.

Contact Person:

Ed Lilla (608) 266-2312