



# SDD 08D13 Slotted Corrugated Metal Pipe Surface Drains

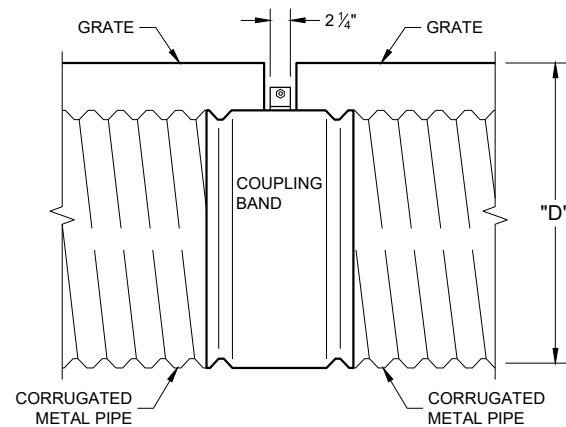
## GENERAL NOTES

DETAILS OF CONSTRUCTION, MATERIALS AND WORKMANSHIP NOT SHOWN ON THIS DRAWING SHALL CONFORM TO THE PERTINENT REQUIREMENTS OF THE STANDARD SPECIFICATIONS AND THE APPLICABLE SPECIAL PROVISIONS.

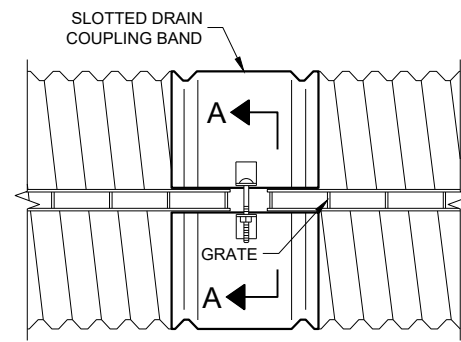
THE PIPE FOR THE SLOTTED DRAIN SHALL MEET AASHTO DESIGNATION M-36, AND THE GRATE ASSEMBLIES SHALL BE MADE FROM STRUCTURAL STEEL SUITABLY WELDED TO FORM THE OPEN SLOT AND HOT-DIP GALVANIZED TO MEET THE PROVISIONS OF AASHTO DESIGNATION M-111.

NORMAL PIPE SIZES ARE 12-INCH THROUGH 24-INCH DIAMETER IN 0.064 INCH THICKNESS, AND 30-INCH DIAMETER PIPE IN 0.079 INCH THICKNESS.

- ① 2 1/2" NORMAL GRATE DEPTH
- ② 6" SPECIAL GRATE DEPTH, WHEN SPECIFIED ON THE PLANS.
- ③ FOR SCREEDING DIRECTLY OVER THE SLOTTED DRAIN WITH ASPHALT PAVER. FOR CONCRETE SURFACE USE 3" WIDE TAPE OVER THE SLOT TO KEEP MATERIAL OUT OF THE PIPE.
- ④ WHEN THE SURFACE IS CONCRETE PAVEMENT THE GRADE AS SHOWN ON THE PLANS WILL BE FLUSH WITH THE TOP OF THE SLOTTED DRAIN.
- ⑤ ENCASE CORRUGATED METAL PIPE SURFACE DRAIN IN GRADE "A" CONCRETE CONFORMING TO STANDARD SPECIFICATION 501 AS MODIFIED IN STANDARD SPECIFICATION 716. PROVIDE QMP FOR CLASS III ANCILLARY CONCRETE PER STANDARD SPECIFICATION 716. UTILIZING EARLY STRENGTH (HES) CONCRETE CONFORMING TO STANDARD SPECIFICATION 710.4(5) IS ALLOWED AND MAY BE REQUIRED BY THE PLANS OR AS DIRECTED BY THE ENGINEER.



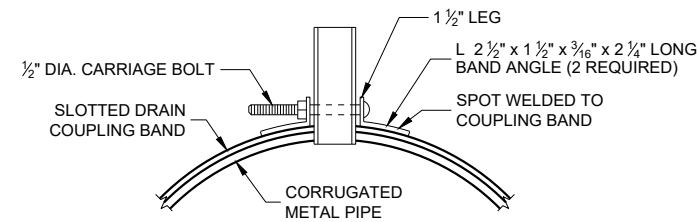
SIDE VIEW



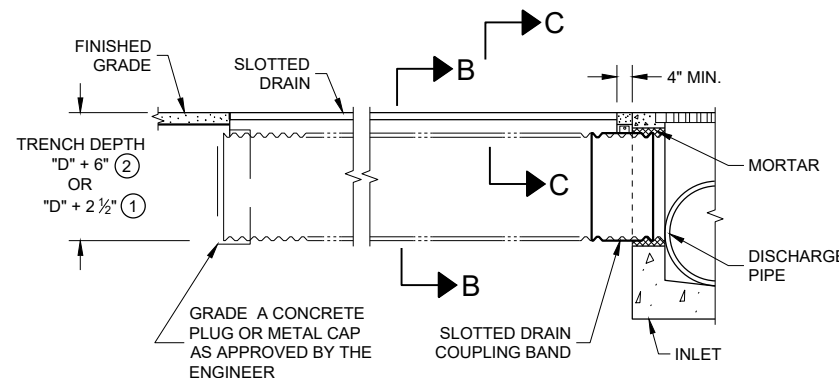
PLAN VIEW

### TYPICAL COUPLING BAND FOR SLOTTED DRAIN

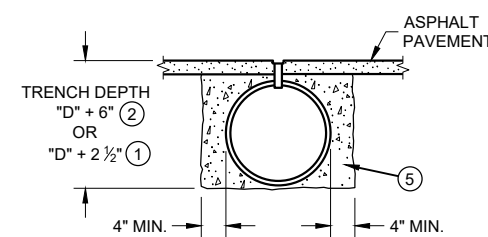
(ALTERNATES PERMITTED AS APPROVED BY THE ENGINEER)



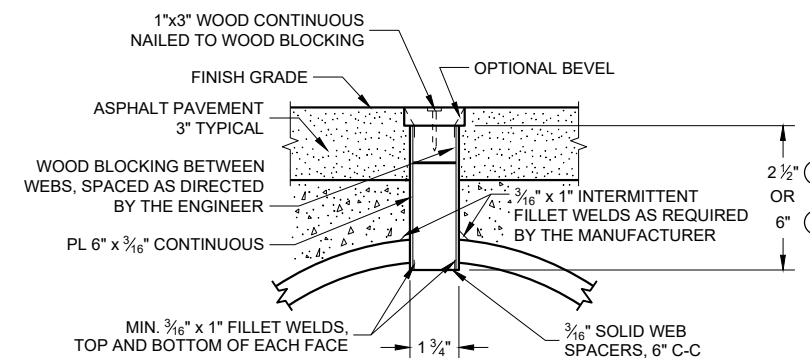
SECTION A - A



SLOTTED DRAIN INSTALLATION TYPE "A"

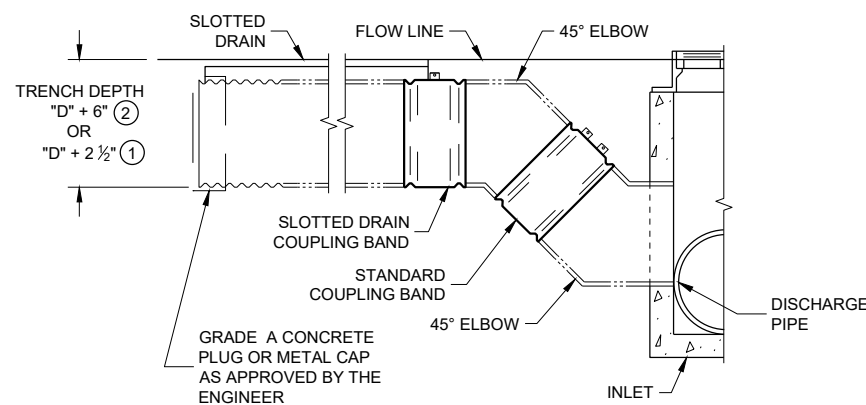


SECTION B - B

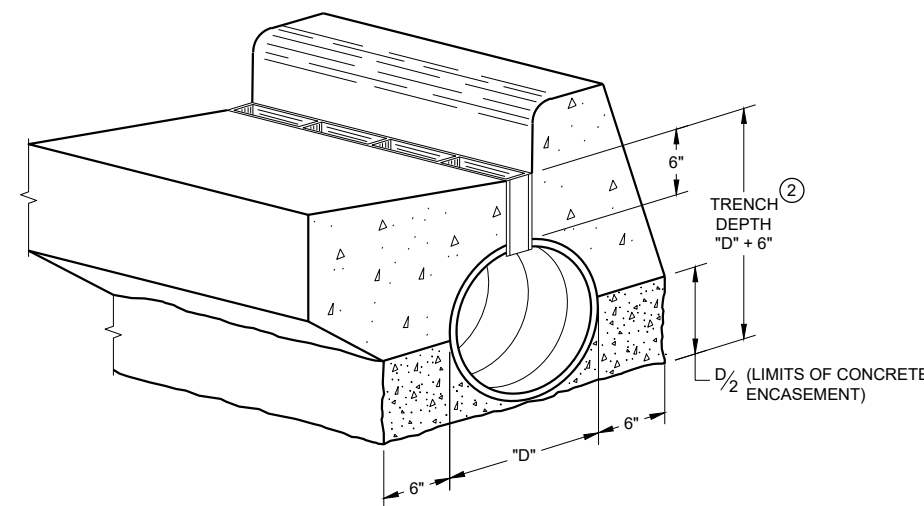


SECTION C - C GRATE SLOT DETAIL

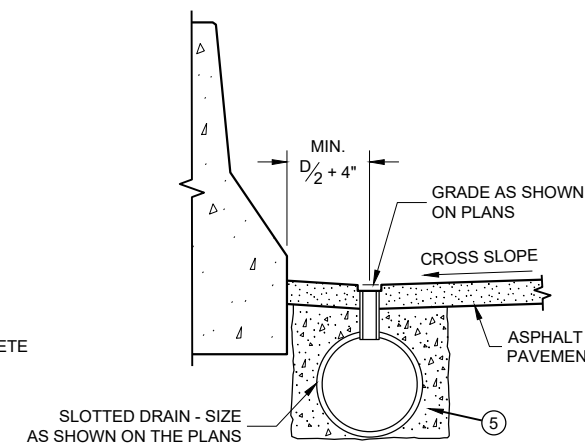
NOTE: TO PREVENT "FLOATING" OF THE SLOTTED DRAIN DURING BACKFILL OPERATIONS, PROVIDE ADEQUATE WEDGES OR POUR THE LEAN GROUT ON TOP OF THE PLUGGED SLOT ALLOWING IT TO SLOUGH TO THE SIDES OF THE PIPE. THIS WILL PROVIDE ENOUGH WEIGHT ON TOP TO KEEP THE PIPE FROM FLOATING



SLOTTED DRAIN INSTALLATION TYPE "B"



SLOTTED DRAIN INSTALLATION IN FLOW LINE OF CURB AND GUTTER TYPE "C"



SLOTTED DRAIN INSTALLATION AT MEDIAN BARRIER TYPE "D"

## SLOTTED CORRUGATED METAL PIPE SURFACE DRAINS

STATE OF WISCONSIN  
DEPARTMENT OF TRANSPORTATION

APPROVED  
DATE May 2022 /S/ Rodney Taylor  
ROADWAY STANDARDS DEVELOPMENT ENGINEER

FHWA

*Slotted Corrugated Metal Pipe Surface Drains*

**References:**

NONE

**Bid items associated with this drawing:**

<u>ITEM NUMBER</u>	<u>DESCRIPTION</u>	<u>UNIT</u>
NONE		

**Standardized Special Provisions associated with this drawing:**

<u>STSP NUMBER</u>	<u>TITLE</u>
521-005	Surface Drain Pipe Corrugated Metal Slotted (size).....IN

**Other SDDs associated with this drawing:**

NONE

**Design Notes:**

NONE

**Contact Person:**

Rodney Taylor (608) 261-8207