

**GENERAL NOTES**

DETAILS OF CONSTRUCTION, MATERIALS AND WORKMANSHIP NOT SHOWN ON THIS DRAWING SHALL CONFORM TO THE PERTINENT REQUIREMENTS OF THE CONTRACT.

FOUR (4) BOLTS SHALL BE FURNISHED WITH EACH TRANSFORMER BASE. BOLTS SHALL BE 1" DIAMETER, 4" IN LENGTH, WITH WASHERS, LOCK WASHERS AND NUTS. BOLTS, NUTS AND WASHERS SHALL BE MANUFACTURED IN ACCORDANCE WITH SECTION 531.2.2 OF THE STANDARD SPECIFICATIONS.

LEVELING SHIMS, IF NEEDED, SHALL BE DESIGNED FOR THE PURPOSE AND USED UNDER CAST BASES WHEN PLUMBING POLES OR STANDARDS DURING INSTALLATION. THE USE OF WASHERS IN LIEU OF PROPER LEVELING SHIMS IS NOT ACCEPTABLE.

SHIM LENGTH SHALL BE LONG ENOUGH TO COMPLETELY COVER THE AREA UNDER THE LENGTH AND WIDTH OF THE BASE MOUNTING FLANGE.

DOUBLE NUTTING IS NOT ACCEPTABLE FOR LEVELING OR MOUNTING PURPOSES.

A NEMA APPROVED, U.L. LISTED, COPPER WITH BRASS OR STAINLESS STEEL SET SCREW, DIRECT BURY RATED, MECHANICAL CONNECTOR (LUG), SIZED TO ACCEPT AWG. #10 TO #4 COPPER STRANDED WIRE SHALL BE FURNISHED AND INSTALLED IN THE PEDESTAL AND TRANSFORMER BASES.

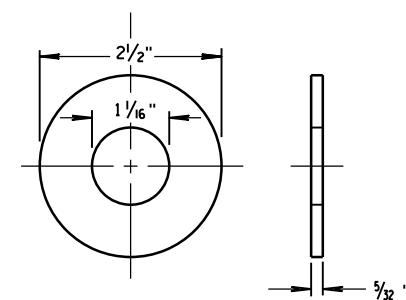
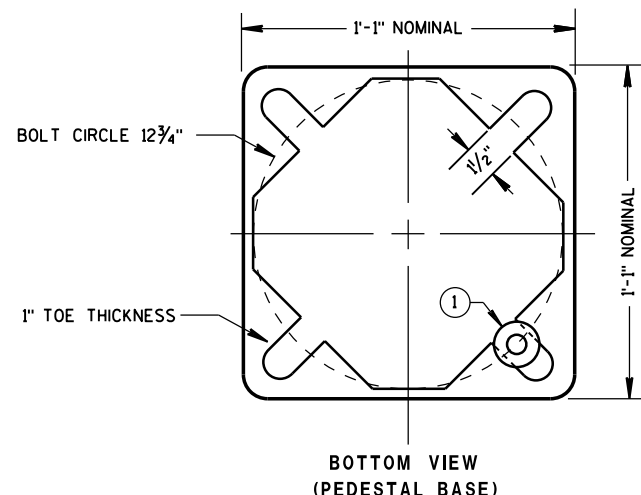
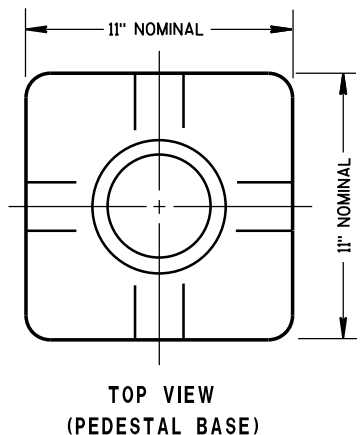
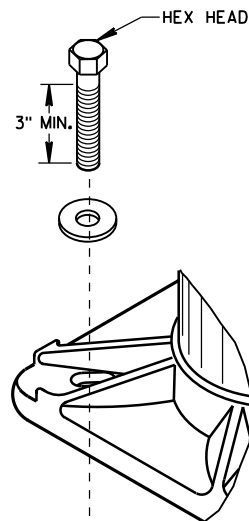
THE MECHANICAL CONNECTOR SHALL BE INSTALLED USING A 1/4" - 20 (TPI) STAINLESS STEEL HEX HEAD BOLT OF SUFFICIENT LENGTH TO FIRMLY ATTACH THE LUG TO THE BASE.

SHOULD THE MANNER OF ATTACHMENT OF THE LUG REQUIRE WASHERS, HEX NUTS, LOCK WASHER - THEY SHALL BE STAINLESS STEEL AS IS THE BOLT. THE MANNER OF ATTACHMENT SHALL NOT BLOCK ACCESSIBILITY TO WIRE PLACEMENT IN THE CONNECTOR.

PEDESTAL BASE COLLAR THREADING SHALL BE TAPERED AND IN ACCORDANCE WITH NATIONAL PIPE THREADING DIMENSIONS.

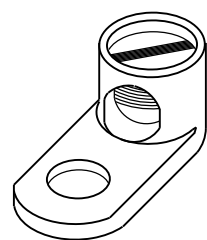
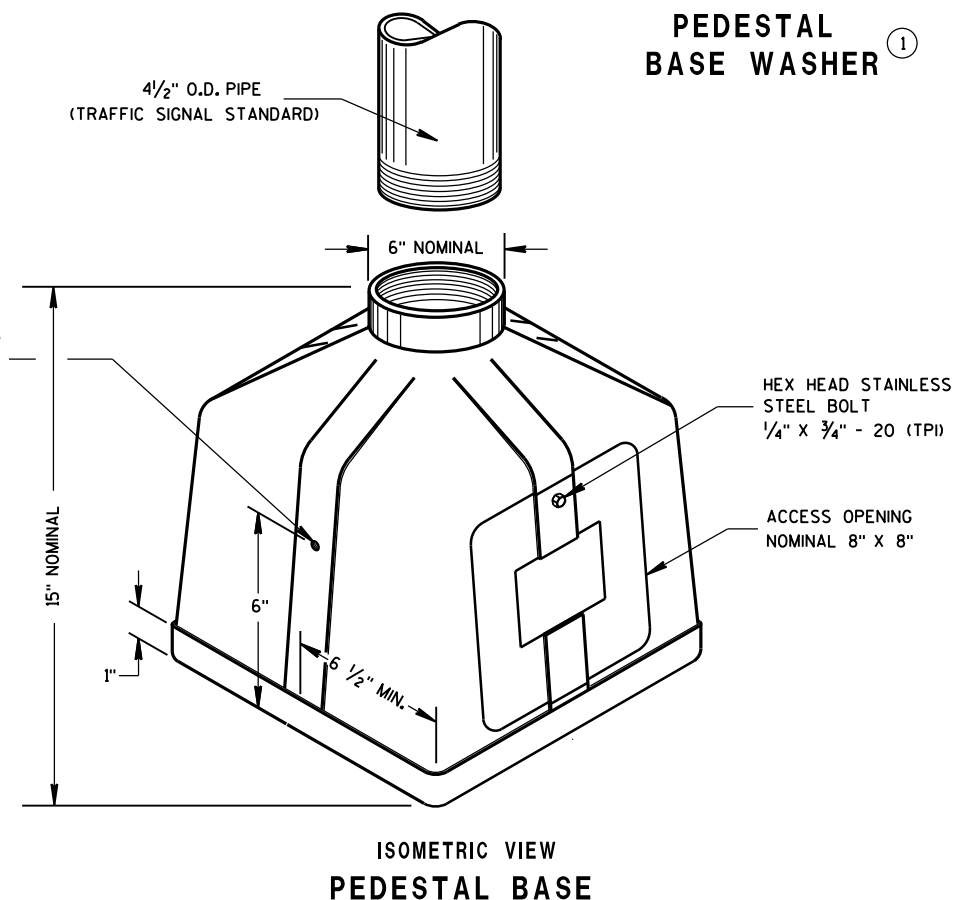
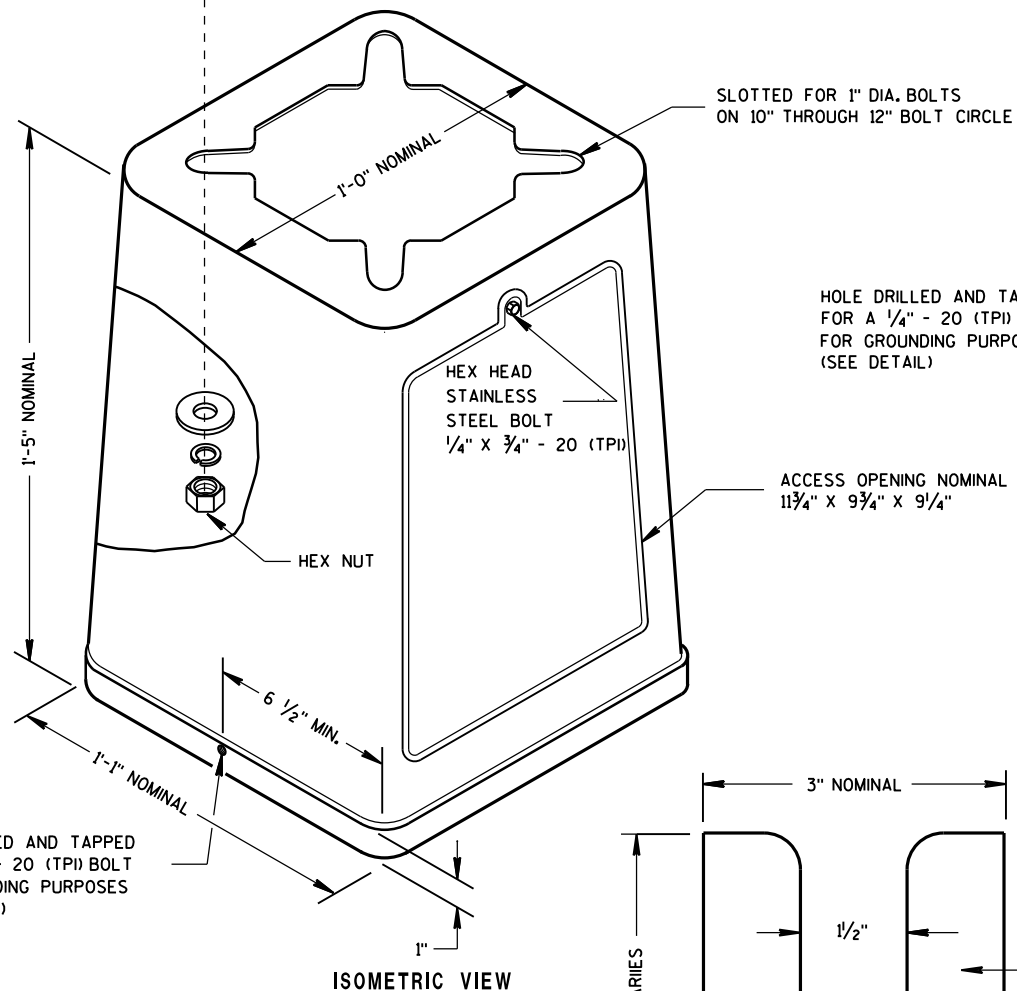
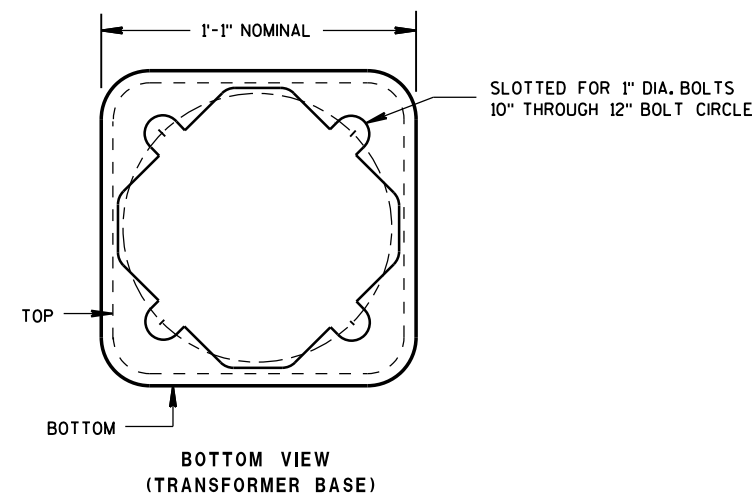
BASE COLLAR THREADING SHALL EXTEND INTO THE BASE COLLAR WITH SUFFICIENT DEPTH TO ACCEPT THE INSTALLATION OF TRAFFIC SIGNAL STANDARDS TO A DEPTH OF 1/2", THEN TIGHTENING TO A POINT OF BEING IMMOVABLE.

THE ACCESS DOOR SHALL BE OF THE SAME MATERIAL AS THE BASE.



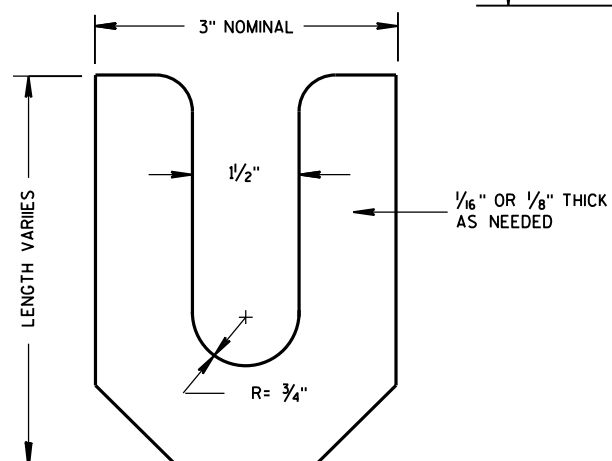
ZINC COATED STEEL WASHER TO BE PROVIDED BY THE CONTRACTOR

**PEDESTAL BASE WASHER** ①



**TYPICAL MECHANICAL CONNECTOR LUG**  
TO BE FURNISHED WITH EACH BASE

**TRANSFORMER BASE**  
INTENDED FOR USE WITH TYPE 2, 3, 4, 5 & 6 POLES



**LEVELING SHIM**

6

6

<b>TRANSFORMER/PEDESTAL BASES</b>	
STATE OF WISCONSIN DEPARTMENT OF TRANSPORTATION	
APPROVED Sept. 2014 DATE	/S/ Ahmet Demirbilek STATE ELECTRICAL ENGINEER
FHWA	

*Transformer/Pedestal Bases*

**References:**

- [FDM15-5 Attachment 30.5](#) and [30.6](#) for conventional symbols
- [Standard Spec 657](#) Poles, Arms, Standards and Bases
- [TEOpS Minimum Lateral Offsets](#)

**Bid items associated with this drawing:**

<u>ITEM NUMBER</u>	<u>DESCRIPTION</u>	<u>UNIT</u>
657.0100	Pedestal Bases .....	EACH
657.0255	Transformer Bases Breakaway 11 1/2-Inch Bolt Circle .....	EACH

**Standardized Special Provisions associated with this drawing:**

<u>STSP NUMBER</u>	<u>TITLE</u>
NONE	

**Other SDDs associated with this drawing:**

- [SDD 9C2](#) Concrete Bases Types 1, 2, 5 and 6
- [SDD 9E1](#) Pole Mountings
- [SDD 9E5](#) Traffic Signal Standard Ornamental Bracket Mountings (Typical) for 12 ft. or 15 ft.
- [SDD 9E6](#) Traffic Signal Standard Poly Bracket Mountings (Typical) for 12 ft. or 15 ft.
- [SDD 9E7](#) Traffic Signal Standard Pedestrian and Flasher Typical Mounting Details

**Design Notes:**

NONE

**Contact Person:**

Ahmet Demirbilek (414) 220-6801  
 (414) 322-9606 (Mobile)