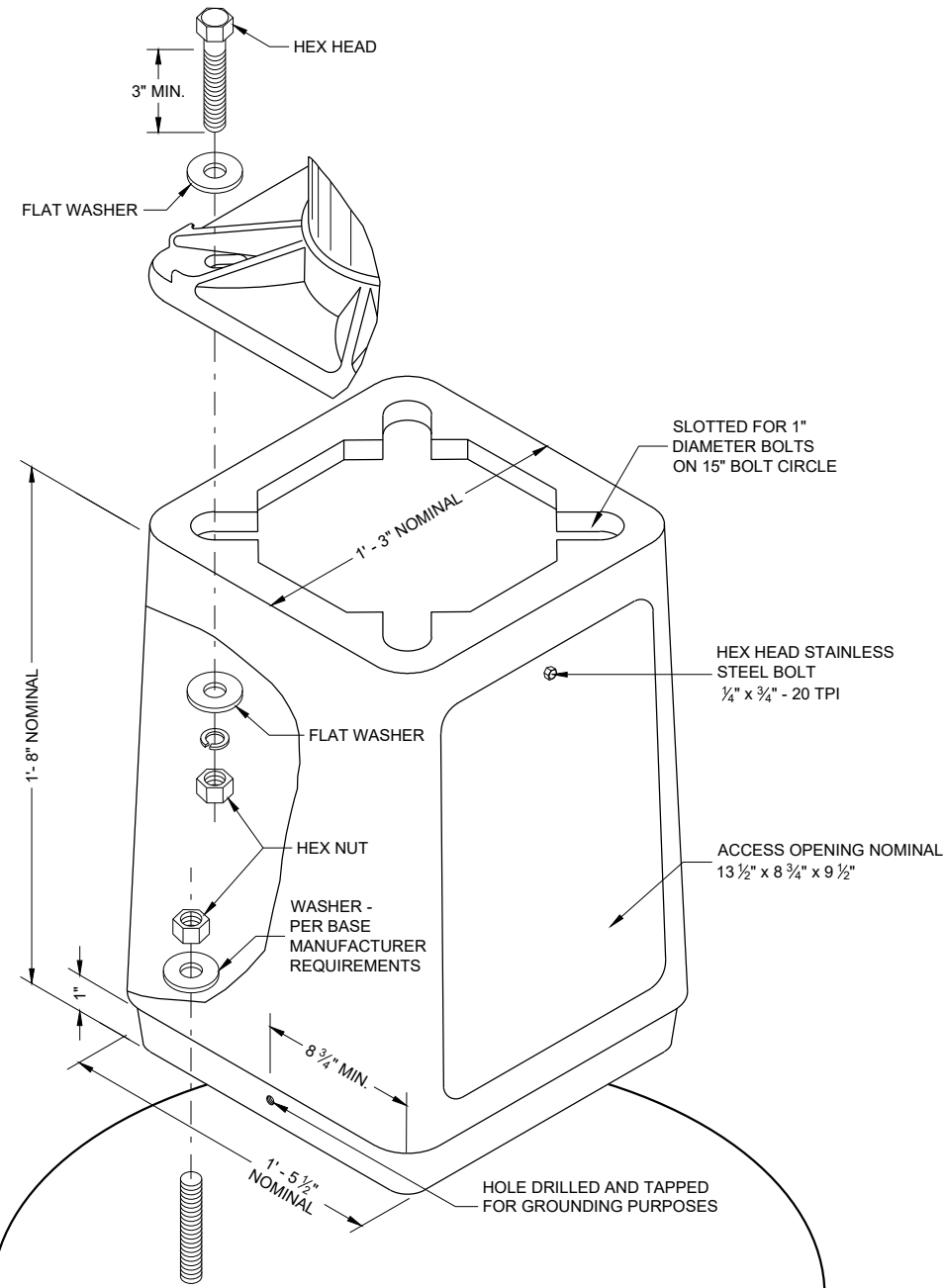
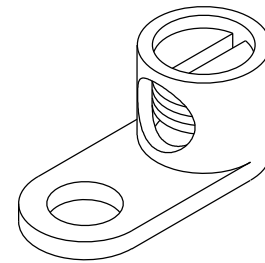




SDD 09C10 Transformer Base for 15" Bolt Circle

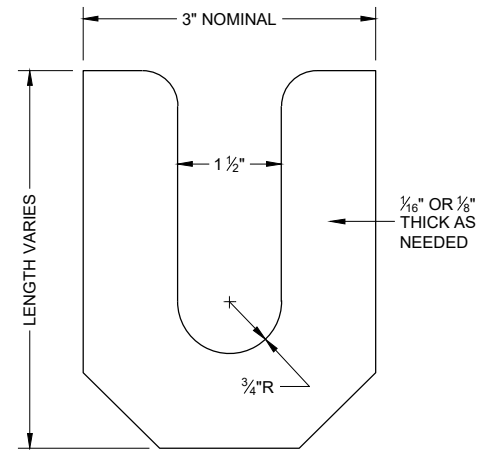


**ISOMETRIC VIEW
TRANSFORMER BASE**

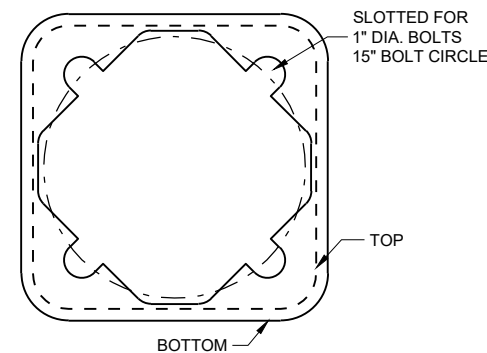


TYPICAL MECHANICAL CONNECTOR LUG

TO BE FURNISHED WITH EACH BASE



LEVELING SHIM



BOTTOM VIEW

GENERAL NOTES

DETAILS OF CONSTRUCTION, MATERIALS AND WORKMANSHIP NOT SHOWN ON THIS DRAWING SHALL CONFORM TO THE PERTINENT REQUIREMENTS OF THE CONTRACT.

BREAKAWAY BASES (WHERE REQUIRED) WILL BE MEASURED AND PAID AS SEPARATE ITEMS OF WORK IN ADDITION TO THE LIGHT POLE.

FOUR (4) BOLTS SHALL BE FURNISHED WITH EACH TRANSFORMER BASE. BOLTS SHALL BE 1" DIAMETER, 4" IN LENGTH, WITH WASHERS, LOCK WASHERS AND NUTS. BOLTS, NUTS AND WASHERS SHALL BE MANUFACTURED IN ACCORDANCE WITH SECTION 531.2.2 OF THE STANDARD SPECIFICATIONS.

LEVELING SHIMS, IF NEEDED, SHALL BE DESIGNED FOR THE PURPOSE AND USED UNDER CAST BASES WHEN PLUMBING POLES OR STANDARDS DURING INSTALLATION. THE USE OF WASHERS IN LIEU OF PROPER LEVELING SHIMS IS NOT ACCEPTABLE.

SHIM LENGTH SHALL BE LONG ENOUGH TO COMPLETELY COVER THE AREA UNDER THE LENGTH AND WIDTH OF THE BASE MOUNTING FLANGE.

A NEMA APPROVED, U.L. LISTED, COPPER WITH BRASS OR STAINLESS STEEL SET SCREW, DIRECT BURY RATED, MECHANICAL CONNECTOR (LUG), SIZED TO ACCEPT AWG. #10 TO #4 COPPER STRANDED WIRE SHALL BE FURNISHED AND INSTALLED IN THE PEDESTAL AND TRANSFORMER BASES.

THE MECHANICAL CONNECTOR (GROUNDING LUG) SHALL BE INSTALLED USING THE TAPPED HOLE PROVIDED BY THE MANUFACTURER. THE MOUNTING BOLT (HEX HEAD), NUT, WASHER AND LOCK WASHER SHALL BE STAINLESS STEEL, SIZED TO FIT THE THREADING AND HOLE SIZE, AND BE OF SUFFICIENT LENGTH TO FIRMLY ATTACH THE LUG TO THE BASE.

SHOULD A GROUNDING LUG MOUNTING HOLE NOT BE PROVIDED, THE MECHANICAL CONNECTOR SHALL BE INSTALLED USING A 1/4" x 3/4" - 20 (TPI) STAINLESS STEEL HEX HEAD BOLT OF SUFFICIENT LENGTH TO FIRMLY ATTACH THE LUG TO THE BASE. IT SHALL BE MOUNTED IN THE SAME LOCATION AS IS SHOWN ON THE DRAWING.

SHOULD THE MANNER OF ATTACHMENT OF THE LUG REQUIRE WASHERS, HEX NUTS, LOCK WASHER, THEY SHALL BE STAINLESS STEEL AS IS THE BOLT. THE MANNER OF ATTACHMENT SHALL NOT BLOCK ACCESSIBILITY TO WIRE PLACEMENT IN THE CONNECTOR.

THE ACCESS DOOR SHALL BE OF THE SAME MATERIAL AS THE BASE.

6

6

SDD 09C10 - 03

SDD 09C10 - 03

TRANSFORMER BASE FOR 15" BOLT CIRCLE

STATE OF WISCONSIN
DEPARTMENT OF TRANSPORTATION

APPROVED
September 2014 DATE /S/ Ahmet Demerbilek
STATE ELECTRICAL ENGINEER

FHWA

Transformer Base for 15-Inch Bolt Circle

References:

[FDM15-5 Attachment 30.5](#) and [30.6](#) for conventional symbols
[Standard Spec 657](#) Poles, Arms, Standards and Bases
[TEOpS Minimum Lateral Offsets](#)

Bid items associated with this drawing:

<u>ITEM NUMBER</u>	<u>DESCRIPTION</u>	<u>UNIT</u>
657.0205	Transformer Bases Breakaway 13-15-Inch Bolt Circle	EACH

Standardized Special Provisions associated with this drawing:

<u>STSP NUMBER</u>	<u>TITLE</u>
NONE	

Other SDDs associated with this drawing:

- [SDD 9C8](#) Concrete Base, Type 7
- [SDD 9C9](#) Concrete Base, Type 8
- [SDD 9E1](#) Pole Mountings
- [SDD 10A17](#) Poles

Design Notes:

NONE

Contact Person:

Ahmet Demirbilek (414) 220-6801
(414) 322-9606 (Mobile)