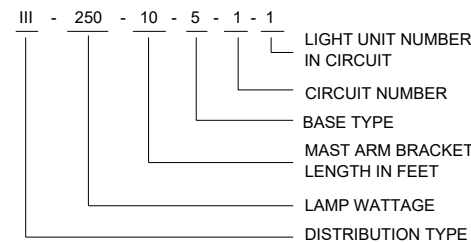
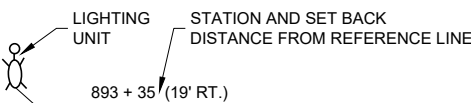


GENERAL NOTES

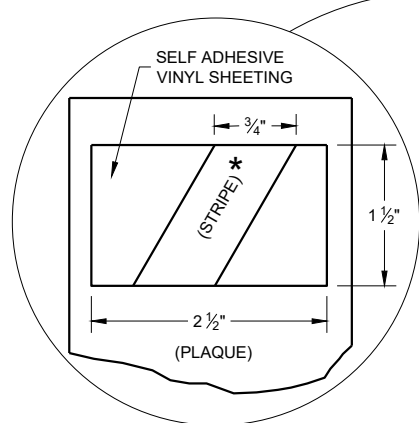
DETAILS OF CONSTRUCTION, MATERIALS AND WORKMANSHIP NOT SHOWN ON THIS DRAWING SHALL CONFORM TO THE PERTINENT REQUIREMENTS OF THE CONTRACT.

THE EQUIPMENT GROUND CONNECTOR SHALL BE TAPED WITH 3 WRAPS (MINIMUM) OF APPROVED RUBBER TAPE AND 3 WRAPS (MINIMUM) OF APPROVED VINYL TAPE TO COVER SHARP WIRE ENDS AFTER THE CONNECTION IS COMPLETED.

WHEN TRANSFORMER BASES ARE USED, ALL WIRING CONNECTIONS SHALL OCCUR WITHIN THE TRANSFORMER BASES.



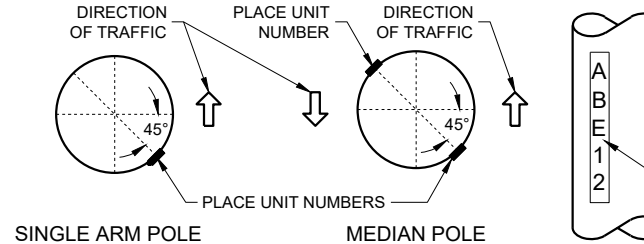
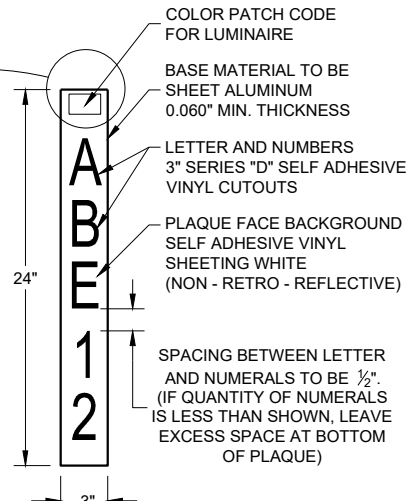
LIGHTING UNIT CODE (TYPICAL)



COLOR PATCH CODE FOR LUMINAIRES

(HIGH PRESSURE SODIUM)	(MERCURY VAPOR)
1000 WATT - NO PATCH	400 WATT - NO PATCH
400 WATT - ORANGE	250 WATT - YELLOW
310 WATT - BLUE	
250 WATT - ORANGE W / WHITE STRIPE *	
200 WATT - RED	
150 WATT - GREEN	
100 WATT - BROWN	

IDENTIFICATION PLAQUE

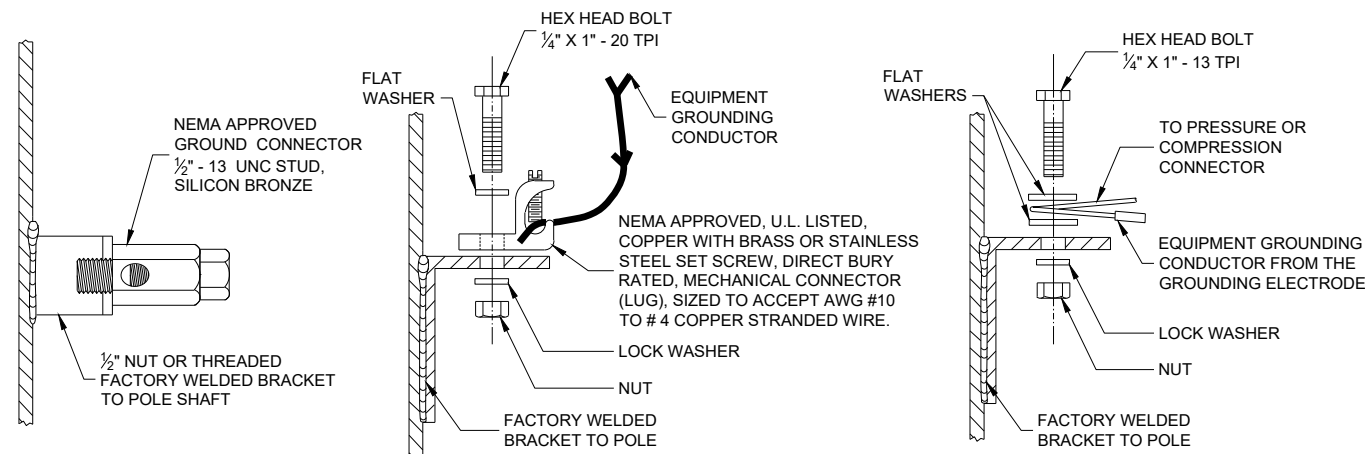


LIGHTING UNIT IDENTIFICATION PLAQUE REQUIREMENTS AND PLACEMENT (TYPICAL, ALL LIGHTING UNITS)

FURNISH PLAQUE WHEN CALLED FOR BY SPECIAL PROVISIONS

NOTES

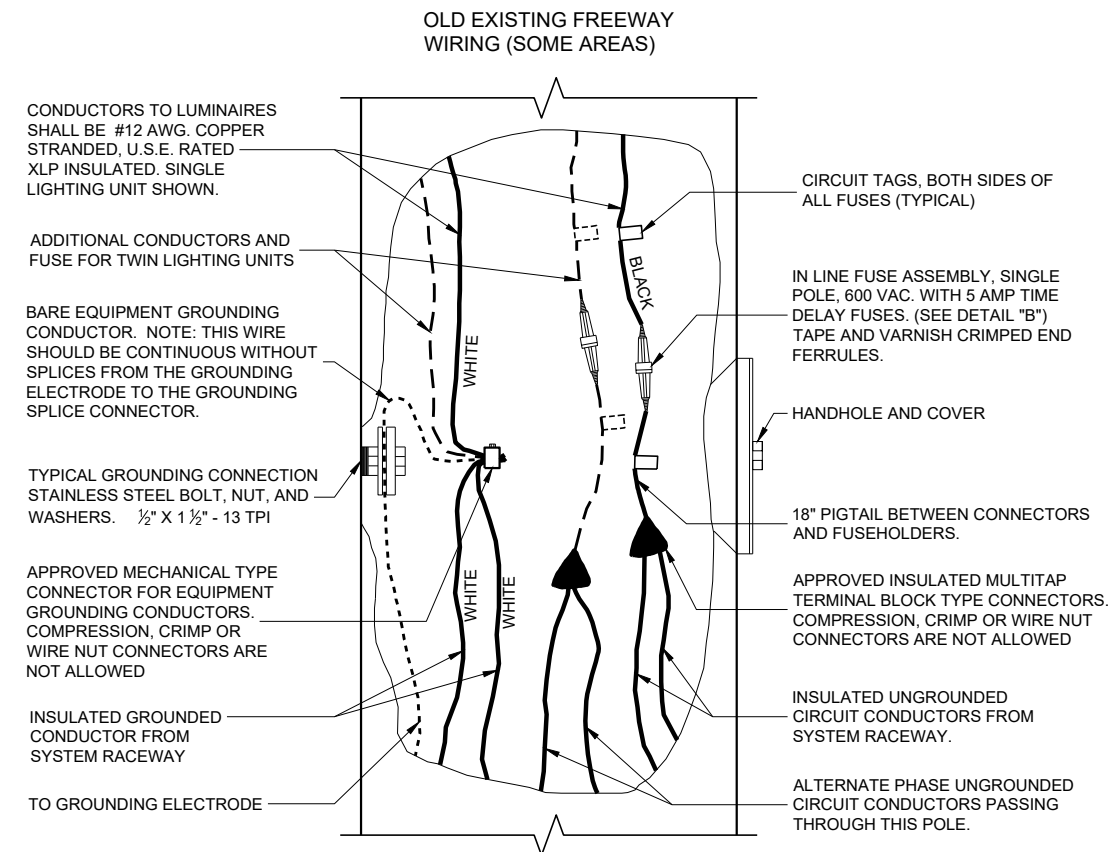
- 1) PLACE BOTTOM OF UNIT NUMBER PLAQUE 5'-0" ABOVE ELEVATION OF ADJACENT CURB OR SHOULDER.
 - 2) UNIT NUMBER: ONE REQUIRED FOR SINGLE ARM POLES. TWO REQUIRED FOR MEDIAN MOUNT POLES.
- FASTEN TOP, CENTER AND BOTTOM OF PLAQUE WITH 3 ALUMINUM POP RIVETS (ALUMINUM POLES) OR STAINLESS STEEL POP RIVETS (STEEL POLES).



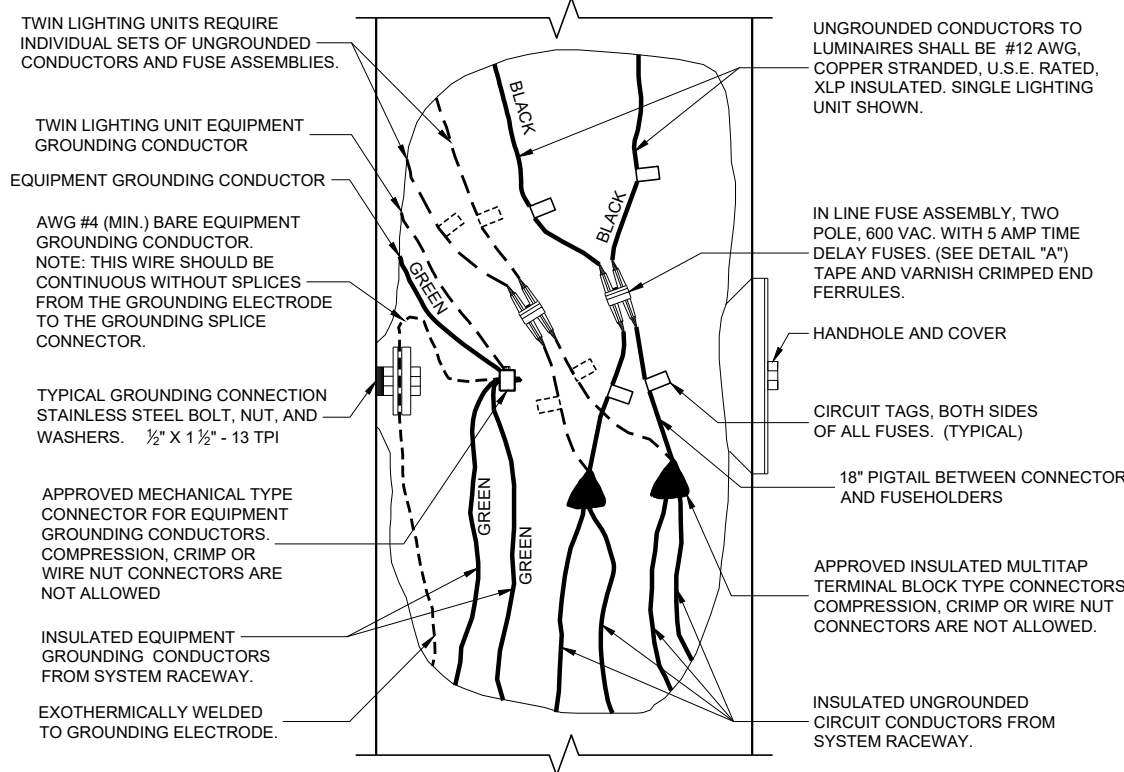
TYPICAL GROUNDING CONNECTIONS

NUT, BOLT AND WASHERS SHALL BE STAINLESS STEEL

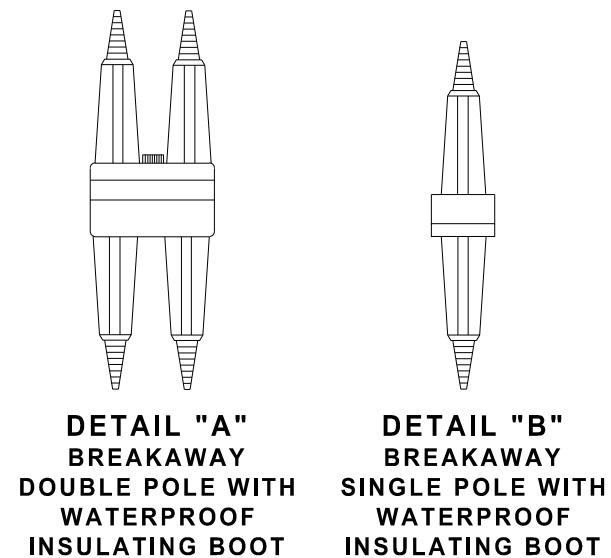
6



2 WIRE - 120, 240, OR 480 VAC TO GROUND



2 WIRE - 240 OR 480 VAC (UNGROUNDING CONDUCTORS) WITH EQUIPMENT GROUNDING CONDUCTOR



FREeway LIGHTING UNIT POLE WIRING

STATE OF WISCONSIN
DEPARTMENT OF TRANSPORTATION

APPROVED
November 2018 /S/ Ahmet Demirelek
DATE STATE ELECTRICAL ENGINEER

FHWA

Freeway Lighting Unit Pole Wiring

References:

- [FDM15-5 Attachment 30.5](#) and [30.6](#) for conventional symbols.
- [Standard Spec. 655](#) Electrical Wiring
- TEOpS X-X-X Cable and Wire Measurement Lengths

Bid items associated with this drawing:

<u>ITEM NUMBER</u>	<u>DESCRIPTION</u>	<u>UNIT</u>
655.0600 - 0699	Electrical Wire Lighting (AWG)	LF

Standardized Special Provisions associated with this drawing:

<u>STSP NUMBER</u>	<u>TITLE</u>
NONE	

Other SDDs associated with this drawing:

- [SDD 9E1](#) Pole Mountings, sheets "a", "b", "c", "d", "e" and "f"
- [SDD 9E8](#) Type 9, Type 10, Type 9/10 Special, Type 12 and Type 13 Poles with Monotube Arms, sheets "e", "f", "g", "h", "j", and "k"
- [SDD 9E12](#) Over Height Poles and Monotube Arms, sheets, "b", "d", and "e"
- [SDD 10A1](#) Electrical Handhole Wiring
- [SDD 10A2](#) Identification Plaques Light Poles
- [SDD 10A3](#) Circuit Identification Plaques Sign Bridges
- [SDD 10A4](#) Identification Plaques Underdeck and High Mast Lighting
- [SDD 10A5](#) Electrical Details Ground Mount Light Poles Isolated Neutral Systems
- [SDD 10A6](#) Electrical Details Ground Mount Light Poles Phase-to-Phase Systems
- [SDD 10A7](#) Electrical Details Ground Mount Light Poles Phase-to-Phase Systems
- [SDD 10A8](#) Electrical Details Structure Mount Light Poles Isolated Neutral Systems
- [SDD 10A9](#) Electrical Details Median Mount Light Poles Isolated Neutral Systems
- [SDD 10A10](#) Electrical Details Structure Mount Light Poles Phase-to-Phase Systems
- [SDD 10A11](#) Electrical Details Median Mount Light Poles Isolated Neutral Systems
- [SDD 10A12](#) Electrical Details Median Mount Light Poles Grounded Neutral Systems
- [SDD 10A14](#) Electrical Details High Mast Lighting, sheets "a" and "b"
- [SDD 10A15](#) Electrical Details Underdeck Lighting, sheets "a" and "b"
- [SDD 10A17](#) Poles, sheets "a", "b", and "c"
- [SDD 10A18](#) Luminaire Arms, sheets "a" and "b"

Design Notes:

NONE

Contact Person:

Ahmet Demirbilek (414) 220-6801
 (414) 322-9606 (Mobile)