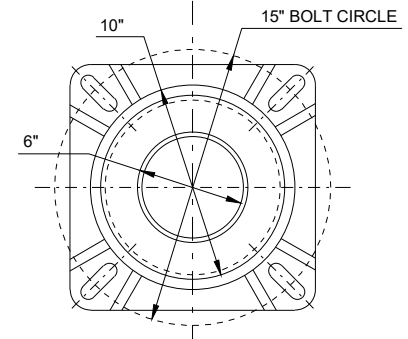
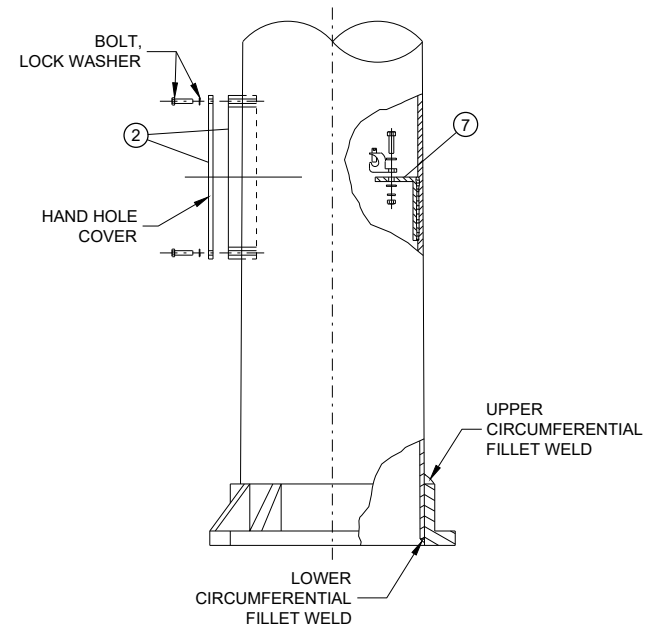
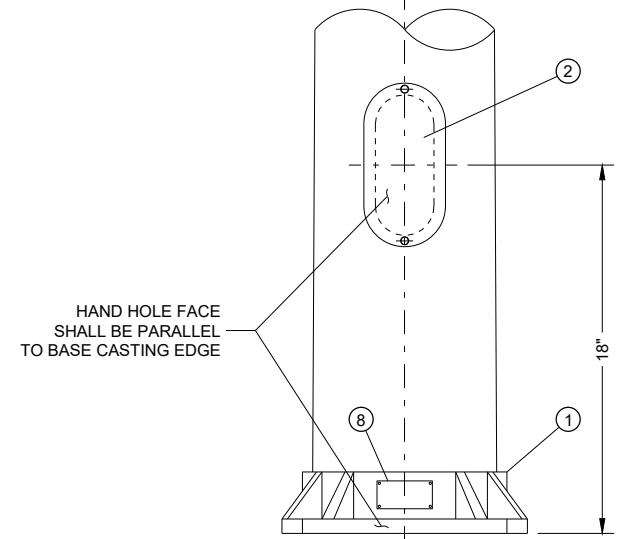
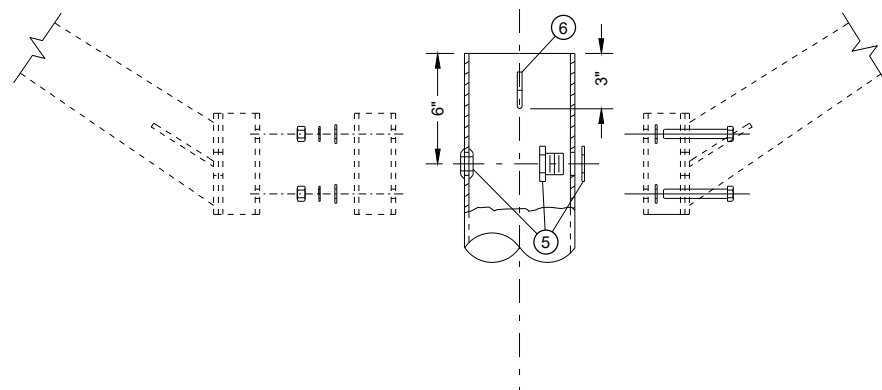
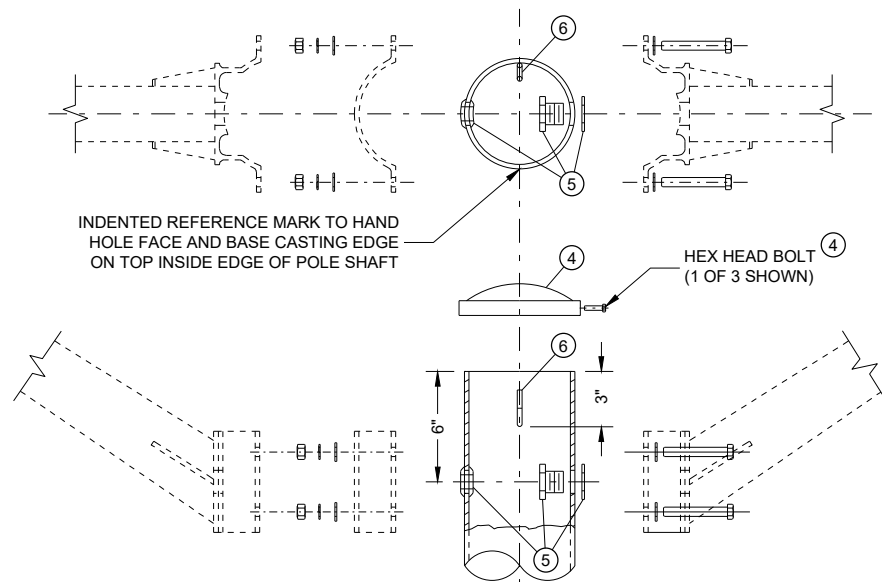


# SDD 10A17-a Poles, Type 7 Aluminum - 35' - 10" Shaft



(TOP VIEW)

## GENERAL NOTES

DETAILS OF CONSTRUCTION, MATERIALS, AND WORKMANSHIP NOT SHOWN ON THIS DRAWING SHALL CONFORM TO THE PERTINENT REQUIREMENTS OF THE CONTRACT.

SLOTTED ANCHOR ROD HOLES FOR 1"-8 UNC ANCHOR RODS (4 EACH, 15" BOLT CIRCLE) SHALL BE PROVIDED IN BASE CASTING.

POLES SHALL BE CONSTRUCTED OF 6063-T6 ALUMINUM. EXCEPT THAT BASE CASTINGS SHALL BE CONSTRUCTED OF 356-T6 ALUMINUM. THE SHAFT SHALL BE ROUND AND UNIFORMLY TAPERED FROM A 10" O.D. BUTT TO A 6" O.D. TOP.

HEAT TREATMENT OF WELDMENTS IN STRUCTURAL AREAS (e.g. BASE CASTING, HAND HOLE, BRACKET FOR GROUNDING LUG) REQUIRED.

ALL THREADED FASTENER COMPONENTS SHALL BE STAINLESS STEEL. NUTS SHALL BE HEX NUTS. BOLTS SHALL BE HEX HEAD. ALL THREADED SURFACES SHALL BE COATED WITH ANTI-SEIZE COMPOUND PRIOR TO INSTALLATION.

LUMINAIRE ARMS AND CLAMP ASSEMBLIES SHOWN FOR INFORMATION ONLY (PAID SEPARATELY).

LUMINAIRE LOADING FOR DESIGN CALCULATION SHALL BE 50 LBS. IN WEIGHT AND 1.5 SQ. FT. FOR E.P.A.

- ① SHOE BASE.
- ② 4" x 6" REINFORCED HANDHOLE & COVER ASSEMBLY SECURED BY TWO (2) 1/4" X 3/4"- 20 TPI STAINLESS STEEL HEX HEAD BOLTS.  
  
HANDHOLE SHALL BE 90 DEGREES FROM LUMINAIRE ARMS OF TWIN LUMINAIRE POLES; 180 DEGREES FROM LUMINAIRE ARM OF SINGLE LUMINAIRE POLES; 0 DEGREES FROM LUMINAIRE ARM FOR STRUCTURE MOUNTED POLES.
- ③ INTERNAL DUMBBELL-TYPE VIBRATION DAMPER.
- ④ FURNISH AND INSTALL CAST OR METALLIC (ALUMINUM ALLOY) POLE CAP. FASTEN CAP WITH THREE 1/4" X 3/4"- 20 TPI STAINLESS STEEL HEX HEAD BOLTS.
- ⑤ 1 3/8" FIELD DRILLED HOLE WITH 1" CHASE NIPPLE AND NUT (OR NEO- PRENE GROMMET), PER EACH REQUIRED LUMINAIRE ARM.
- ⑥ FACTORY-WELDED "J" HOOK FOR POLE WIRE STRAIN RELIEF.
- ⑦ FACTORY-WELDED BRACKET FOR GROUNDING LUG, OPPOSITE HANDHOLE. (LUG AND HARDWARE PAID UNDER SEPARATE ITEMS; SHOWN FOR INFORMATION ONLY). PROVIDE HOLE IN BRACKET FOR 1/4" X 3/4"- 20 TPI STAINLESS STEEL HEX HEAD BOLTS.
- ⑧ MANUFACTURER'S PLATE SHOWING WisDOT POLE TYPE, MANUFACTURER, AND DATE.

POLE TYPE (NOM. SHAFT LENGTH)	TYPICAL APPLICATION	ARM & LUMINAIRE LOADS (MAX.)	ADDITIONAL (MAX.) LOADS
TYPE 7 (35' - 10")	ARTERIALS	TWIN ARMS UP TO 10 FT. (SINGLE MEMBER)	UP TO 20 SQ. FT. OF TRAFFIC SIGNS, MOUNTED AS HIGH AS 15 FT. TO TOP OF SIGN, PLUS 1 - 3 SECTION, 1 - 5 SECTION, AND 2 - PED. TRAFFIC HEAD
	FREEWAY	SINGLE ARM, UP TO 20 FT. TRUSS TYPE	UP TO 20 SQ. FT. OF TRAFFIC SIGNS, MOUNTED AS HIGH AS 15 FT. TO TOP OF SIGN

POLE, TYPE 7

6

6

SDD 10A17 - 05a

SDD 10A17 - 05a

### POLES, TYPE 7 ALUMINUM - 35' - 10" SHAFT

STATE OF WISCONSIN  
DEPARTMENT OF TRANSPORTATION

APPROVED  
DATE: May 2022 /S/ Ahmet Demirbilek  
STATE ELECTRICAL ENGINEER

FHWA

*Poles, Type 7 Aluminum - 35'-10" Shaft***References:**

[FDM15-5 Attachment 30.5](#) and [30.6](#) for conventional symbols.  
[Standard Spec 657](#) Poles, Arms, Standards and Bases

**Bid items associated with this drawing:**

<u>ITEM NUMBER</u>	<u>DESCRIPTION</u>	<u>UNIT</u>
657.0330	Poles Type 7 .....	EACH
657.0620 - 0699	Luminaire Arms Single Member 6-Inch Clamp (feet).....	EACH
657.0720 - 0799	Luminaire Arms Truss Type 6-Inch Clamp (feet).....	EACH

**Standardized Special Provisions associated with this drawing:**

<u>STSP NUMBER</u>	<u>TITLE</u>
NONE	

**Other SDDs associated with this drawing:**

<a href="#">SDD 9C10</a>	Transformer Base for 15-inch Bolt Circle
<a href="#">SDD 10A1</a>	Electrical Handhole Wiring
<a href="#">SDD 10A5</a>	Electrical Details Ground Mount Light Poles Isolated Neutral Systems
<a href="#">SDD 10A6</a>	Electrical Details Ground Mount Poles Grounded Neutral Systems
<a href="#">SDD 10A7</a>	Electrical Details Ground Mount Light Poles Isolated Neutral Systems
<a href="#">SDD 10A8</a>	Electrical Details Structure Mount Light Poles Isolated Neutral Systems
<a href="#">SDD 10A9</a>	Electrical Details Structure Mount Light Poles Grounded Neutral Systems
<a href="#">SDD 10A10</a>	Electrical Details Structure Mount Light Poles Phase-to-Phase Systems
<a href="#">SDD 10A11</a>	Electrical Details Median Mount Light Poles Isolated Neutral Systems
<a href="#">SDD 10A12</a>	Electrical Details Median Mount Light Poles Grounded Neutral Systems
<a href="#">SDD 10A18</a>	Luminaire Arms, Single Member 6-inch Clamp sheets "a" and "b"

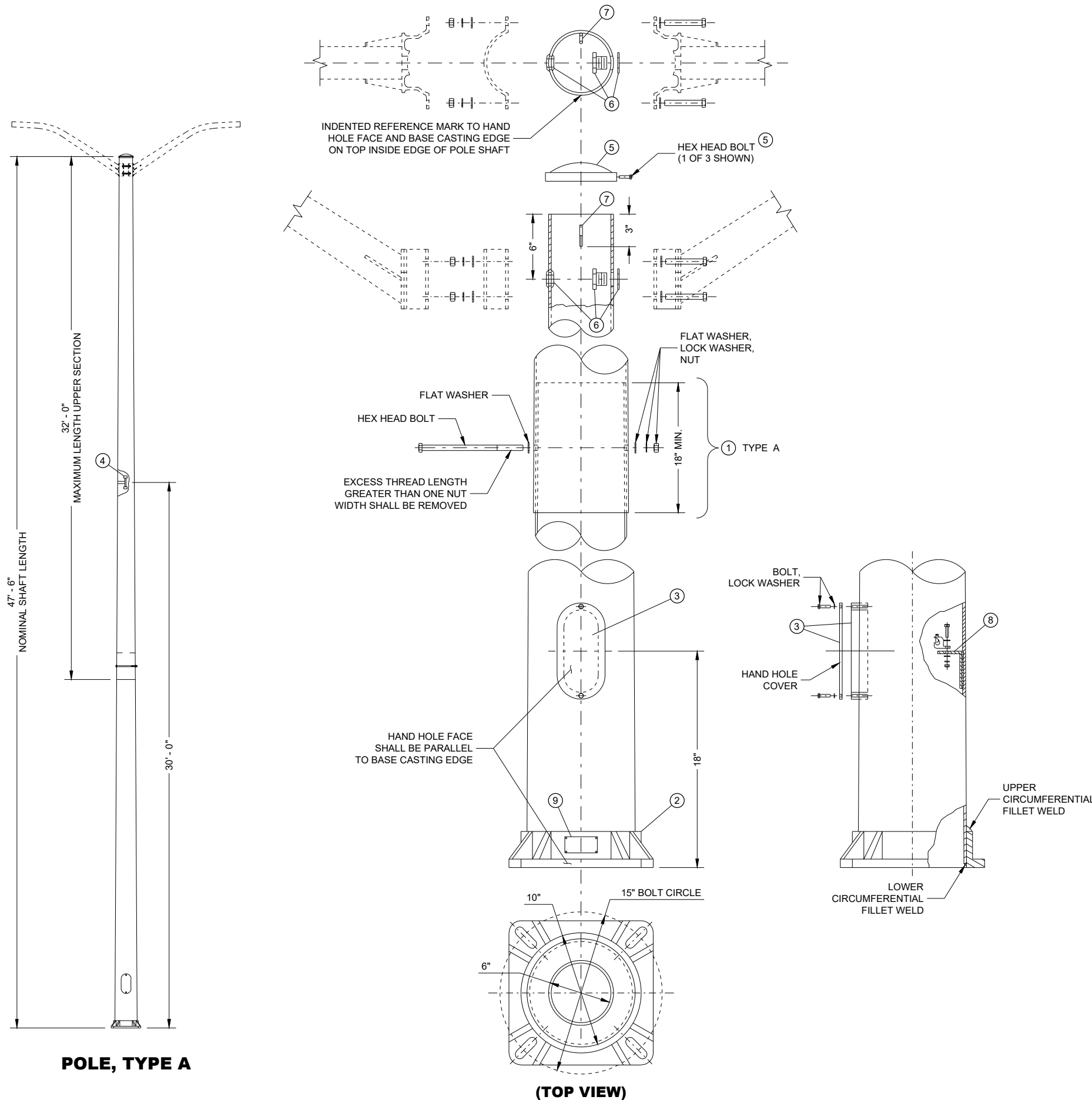
**Design Notes:**

NONE

**Contact Person:**

Ahmet Demirbilek (414) 220-6801  
 (414) 322-9606 (Mobile)

# SDD 10A17-b Poles, Type A Aluminum - 47' - 6" Shaft



## GENERAL NOTES

DETAILS OF CONSTRUCTION, MATERIALS, AND WORKMANSHIP NOT SHOWN ON THIS DRAWING SHALL CONFORM TO THE PERTINENT REQUIREMENTS OF THE CONTRACT.

POLES SHALL BE CONSTRUCTED OF 6063-T6 ALUMINUM, EXCEPT THAT BASE CASTINGS SHALL BE CONSTRUCTED OF 356-T6 ALUMINUM. THE SHAFT SHALL BE ROUND AND UNIFORMLY TAPERED FROM A 10" O.D. BUTT TO A 6" O.D. TOP.

HEAT TREATMENT OF WELDMENTS IN STRUCTURAL AREAS (e.g. BASE CASTING, HAND HOLE, BRACKET FOR GROUNDING LUG) REQUIRED.

ALL THREADED FASTENER COMPONENTS SHALL BE STAINLESS STEEL. NUTS SHALL BE HEX NUTS. BOLTS SHALL BE HEX HEAD. ALL THREADED SURFACES SHALL BE COATED WITH ANTI-SEIZE COMPOUND PRIOR TO INSTALLATION.

LUMINAIRE ARMS AND CLAMP ASSEMBLIES SHOWN FOR INFORMATION ONLY (PAID SEPARATELY).

LUMINAIRE LOADING FOR DESIGN CALCULATION SHALL BE 50 LBS. IN WEIGHT AND 1.5 SQ. FT. FOR E.P.A.

- ① OPTIONAL TELESCOPING FIELD JOINT SECURED BY A 5/8" - 11 TPI THROUGH BOLT OR STUD.
- ② SHOE BASE.
- ③ 4" x 6" REINFORCED HANDHOLE & COVER ASSEMBLY SECURED BY TWO (2) 1/4" X 3/4" - 20 TPI STAINLESS STEEL HEX HEAD BOLTS.  
HANDHOLE SHALL BE 90 DEGREES FROM LUMINAIRE ARMS OF TWIN LUMINAIRE POLES; 180 DEGREES FROM LUMINAIRE ARM OF SINGLE LUMINAIRE POLES; 0 DEGREES FROM LUMINAIRE ARM FOR STRUCTURE MOUNTED POLES.
- ④ INTERNAL DUMBELL-TYPE VIBRATION DAMPER.
- ⑤ FURNISH AND INSTALL CAST OR METALLIC (ALUMINUM ALLOY) POLE CAP. FASTEN CAP WITH THREE 1/4" X 3/4" - 20 TPI STAINLESS STEEL HEX HEAD BOLTS.
- ⑥ 1 3/8" FIELD DRILLED HOLE WITH 1" CHASE NIPPLE AND NUT (OR NEO-PRENE GROMMET), PER EACH REQUIRED LUMINAIRE ARM.
- ⑦ FACTORY-WELDED "J" HOOK FOR POLE WIRE STRAIN RELIEF.
- ⑧ FACTORY-WELDED BRACKET FOR GROUNDING LUG, OPPOSITE HANDHOLE. (LUG AND HARDWARE PAID UNDER SEPARATE ITEMS; SHOWN FOR INFORMATION ONLY). PROVIDE HOLE IN BRACKET FOR 1/4" X 3/4" - 20 TPI STAINLESS STEEL HEX HEAD BOLTS.
- ⑨ MANUFACTURER'S PLATE SHOWING WisDOT POLE TYPE, MANUFACTURER, AND DATE.

POLE TYPE (NOM. SHAFT LENGTH)	TYPICAL APPLICATION	ARM & LUMINAIRE LOADS (MAX.)	ADDITIONAL (MAX.) LOADS
TYPE A, (47' - 6")	FREEWAY MEDIAN OR STRUCTURE MOUNT	SINGLE ARM, UP TO 10 FT., OR TWIN 4 FT. ARMS	UP TO 20 SQ. FT. OF TRAFFIC SIGNS, MOUNTED AS HIGH AS 15 FT. TO TOP OF SIGN.

## POLES, TYPE A ALUMINUM - 47' - 6" SHAFT

STATE OF WISCONSIN  
DEPARTMENT OF TRANSPORTATION

APPROVED  
May 2022 /S/ Ahmet Demirelek  
DATE STATE ELECTRICAL ENGINEER

POLE, TYPE A

(TOP VIEW)

*Poles, Type A Aluminum 47-6" Shaft***References:**

[FDM15-5 Attachment 30.5](#) and [30.6](#) for conventional symbols.  
[Standard Spec 657](#) Poles, Arms, Standards and Bases

**Bid items associated with this drawing:**

<u>ITEM NUMBER</u>	<u>DESCRIPTION</u>	<u>UNIT</u>
657.0375	Poles Type A.....	EACH
657.0620 - 0699	Luminaire Arms Single Member 6-Inch Clamp (feet).....	EACH
657.0720 - 0799	Luminaire Arms Truss Type 6-Inch Clamp (feet).....	EACH

**Standardized Special Provisions associated with this drawing:**

<u>STSP NUMBER</u>	<u>TITLE</u>
NONE	

**Other SDDs associated with this drawing:**

<a href="#">SDD 9C10</a>	Transformer Base for 15-inch Bolt Circle
<a href="#">SDD 10A1</a>	Electrical Handhole Wiring
<a href="#">SDD 10A5</a>	Electrical Details Ground Mount Light Poles Isolated Neutral Systems
<a href="#">SDD 10A6</a>	Electrical Details Ground Mount Poles Grounded Neutral Systems
<a href="#">SDD 10A7</a>	Electrical Details Ground Mount Light Poles Isolated Neutral Systems
<a href="#">SDD 10A8</a>	Electrical Details Structure Mount Light Poles Isolated Neutral Systems
<a href="#">SDD 10A9</a>	Electrical Details Structure Mount Light Poles Grounded Neutral Systems
<a href="#">SDD 10A10</a>	Electrical Details Structure Mount Light Poles Phase-to-Phase Systems
<a href="#">SDD 10A11</a>	Electrical Details Median Mount Light Poles Isolated Neutral Systems
<a href="#">SDD 10A12</a>	Electrical Details Median Mount Light Poles Grounded Neutral Systems
<a href="#">SDD 10A18</a>	Luminaire Arms, Single Member 6-inch Clamp sheets "a" and "b"

**Design Notes:**

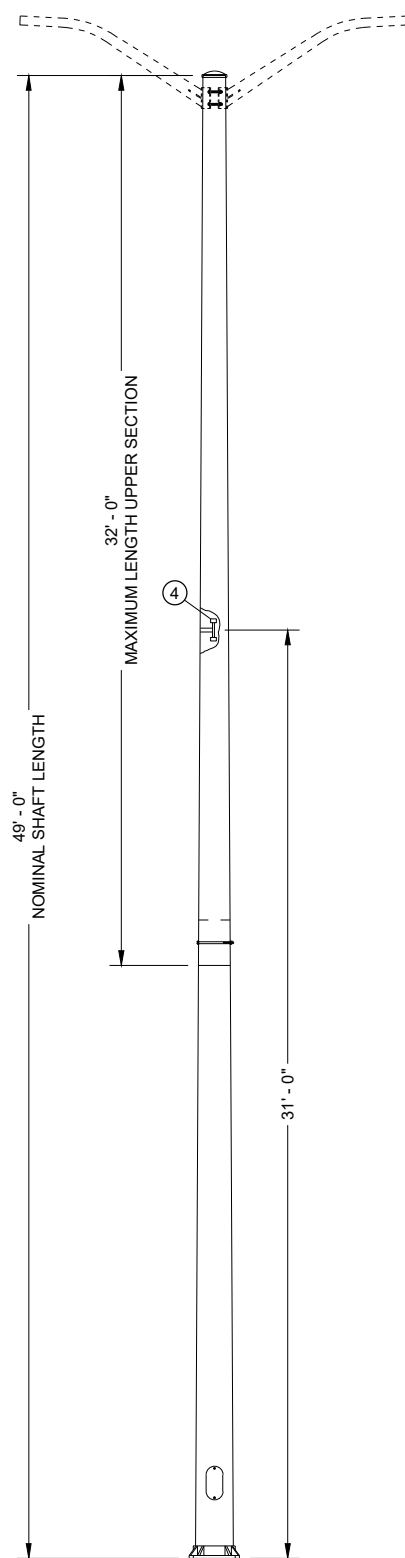
NONE

**Contact Person:**

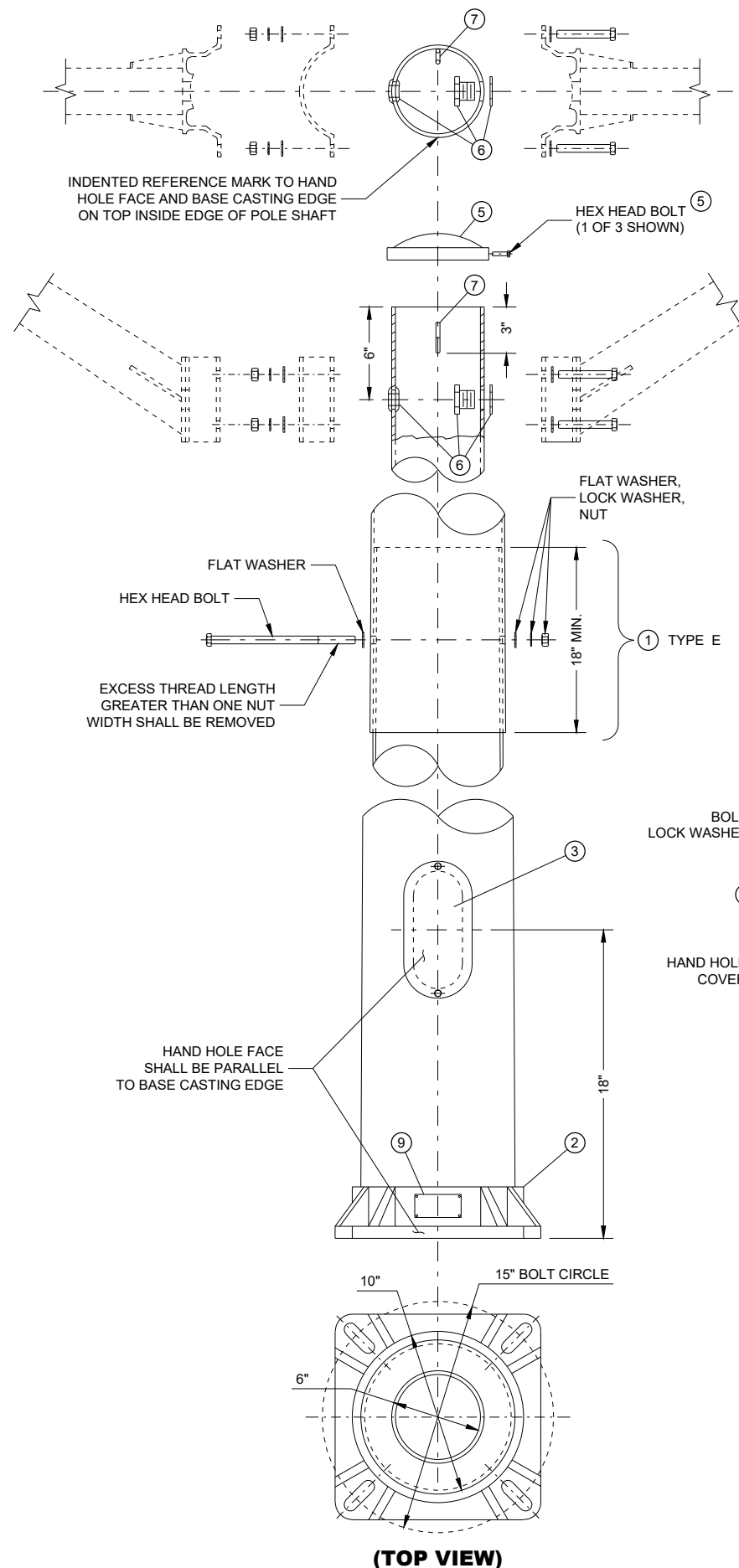
Ahmet Demirbilek (414) 220-6801  
 (414) 322-9606 (Mobile)



# SDD 10A17-c Poles, Type E Aluminum - 49' - 0" Shaft



**POLE, TYPE A**



**(TOP VIEW)**

## GENERAL NOTES

DETAILS OF CONSTRUCTION, MATERIALS, AND WORKMANSHIP NOT SHOWN ON THIS DRAWING SHALL CONFORM TO THE PERTINENT REQUIREMENTS OF THE CONTRACT.

POLES SHALL BE CONSTRUCTED OF 6063-T6 ALUMINUM, EXCEPT THAT BASE CASTINGS SHALL BE CONSTRUCTED OF 356-T6 ALUMINUM.

HEAT TREATMENT OF WELDMENTS IN STRUCTURAL AREAS (e.g. BASE CASTING, HAND HOLE, BRACKET FOR GROUNDING LUG) REQUIRED.

ALL THREADED FASTENER COMPONENTS SHALL BE STAINLESS STEEL. NUTS SHALL BE HEX NUTS. BOLTS SHALL BE HEX HEAD. ALL THREADED SURFACES SHALL BE COATED WITH ANTI-SEIZE COMPOUND PRIOR TO INSTALLATION.

LUMINAIRE ARMS AND CLAMP ASSEMBLIES SHOWN FOR INFORMATION ONLY (PAID SEPARATELY).

LUMINAIRE LOADING FOR DESIGN CALCULATION SHALL BE 50 LBS. IN WEIGHT AND 1.5 SQ. FT. FOR E.P.A.

- ① OPTIONAL TELESCOPING FIELD JOINT SECURED BY A 5/8" - 11 TPI THROUGH BOLT OR STUD.
- ② SHOE BASE.
- ③ 4" x 6" REINFORCED HANDHOLE & COVER ASSEMBLY SECURED BY TWO (2) 1/4" x 3/4" - 20 TPI STAINLESS STEEL HEX HEAD BOLTS.
- ④ INTERNAL DUMBBELL-TYPE VIBRATION DAMPER.
- ⑤ FURNISH AND INSTALL CAST OR METALLIC (ALUMINUM ALLOY) POLE CAP. FASTEN CAP WITH THREE 1/4" x 3/4" - 20 TPI STAINLESS STEEL HEX HEAD BOLTS.
- ⑥ 1 3/8" FIELD DRILLED HOLE WITH 1" CHASE NIPPLE AND NUT (OR NEO-PRENE GROMMET), PER EACH REQUIRED LUMINAIRE ARM.
- ⑦ FACTORY-WELDED "J" HOOK FOR POLE WIRE STRAIN RELIEF.
- ⑧ FACTORY-WELDED BRACKET FOR GROUNDING LUG, OPPOSITE HANDHOLE. (LUG AND HARDWARE PAID UNDER SEPARATE ITEMS; SHOWN FOR INFORMATION ONLY). PROVIDE HOLE IN BRACKET FOR 1/4" x 3/4" - 20 TPI STAINLESS STEEL HEX HEAD BOLTS.
- ⑨ MANUFACTURER'S PLATE SHOWING WISDOT POLE TYPE, MANUFACTURER, AND DATE.

POLE TYPE (NOM. SHAFT LENGTH)	TYPICAL APPLICATION	ARM & LUMINAIRE LOADS (MAX.)	ADDITIONAL (MAX.) LOADS
TYPE A, (49' - 0")	FREEWAY MEDIAN OR STRUCTURE MOUNT	SINGLE ARM, UP TO 20 FT., TRUSS TYPE OR TWIN ARMS UP TO 10' SINGLE MEMBER	UP TO 20 SQ. FT. OF TRAFFIC SIGNS, MOUNTED AS HIGH AS 15 FT. TO TOP OF SIGN.

6

6

SDD 10A17 - 05C

SDD 10A17 - 05C

### POLES, TYPE E ALUMINUM - 49' - 0" SHAFT

STATE OF WISCONSIN  
DEPARTMENT OF TRANSPORTATION

APPROVED  
May 2022 /S/ Ahmet Demirelek  
DATE STATE ELECTRICAL ENGINEER

FHWA

Poles, Type E Aluminum 49'- 0" Shaft

References:

FDM15-5 Attachment 30.5 and 30.6 for conventional symbols.
Standard Spec 657 Poles, Arms, Standards and Bases

Bid items associated with this drawing:

Table with 3 columns: ITEM NUMBER, DESCRIPTION, UNIT. Rows include Poles Type E, Luminaire Arms Single Member 6-Inch Clamp (feet), and Luminaire Arms Truss Type 6-Inch Clamp (feet).

Standardized Special Provisions associated with this drawing:

Table with 2 columns: STSP NUMBER, TITLE. Row: NONE

Other SDDs associated with this drawing:

- List of SDDs: SDD 9C10 Transformer Base for 15-inch Bolt Circle, SDD 10A1 Electrical Handhole Wiring, SDD 10A5 Electrical Details Ground Mount Light Poles Isolated Neutral Systems, SDD 10A6 Electrical Details Ground Mount Poles Grounded Neutral Systems, SDD 10A7 Electrical Details Ground Mount Light Poles Isolated Neutral Systems, SDD 10A8 Electrical Details Structure Mount Light Poles Isolated Neutral Systems, SDD 10A9 Electrical Details Structure Mount Light Poles Grounded Neutral Systems, SDD 10A10 Electrical Details Structure Mount Light Poles Phase-to-Phase Systems, SDD 10A11 Electrical Details Median Mount Light Poles Isolated Neutral Systems, SDD 10A12 Electrical Details Median Mount Light Poles Grounded Neutral Systems, SDD 10A18 Luminaire Arms, Single Member 6-inch Clamp sheets "a" and "b"

Design Notes:

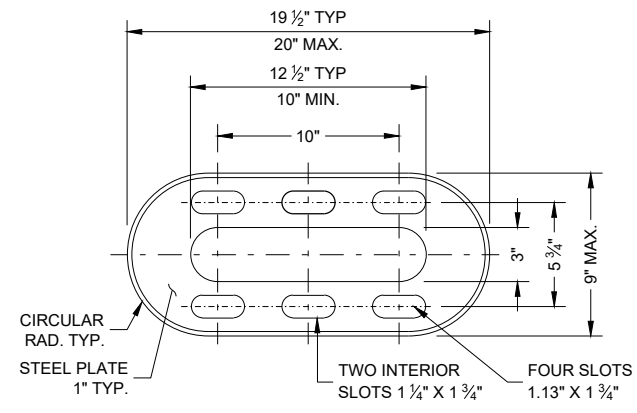
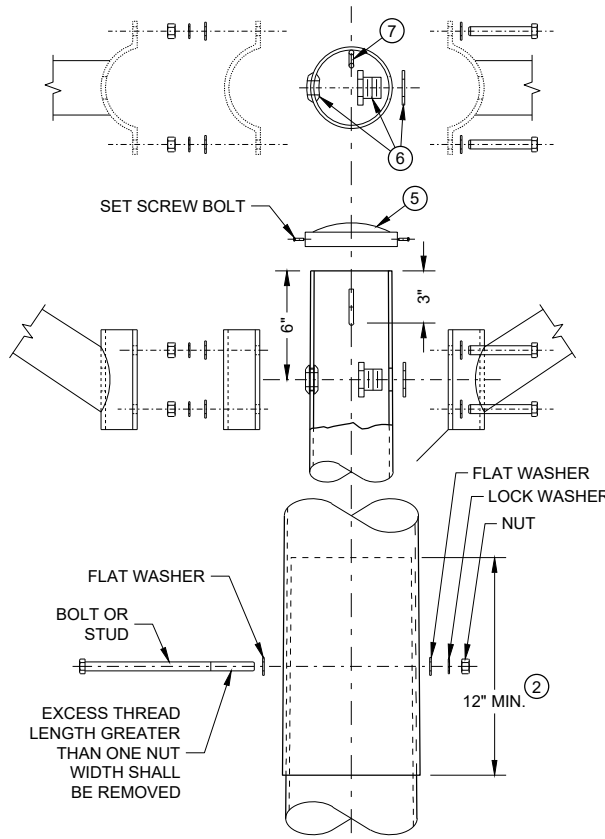
NONE

Contact Person:

Ahmet Demirbilek (414) 220-6801
(414) 322-9606 (Mobile)

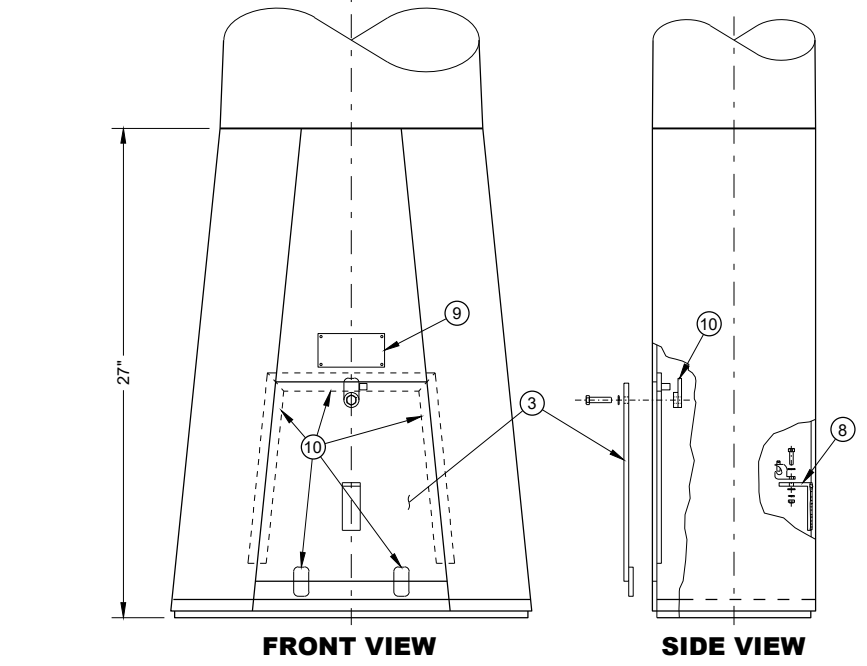


# 10A17-d Pole, Type F



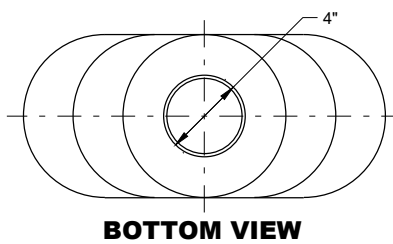
### BOTTOM VIEW

MAX DIMENSIONS AND BOLT PATTERN REQUIRED. OTHER DIMENSIONS AND SHAPES VARY. THIS VERSION SHOWN FOR ILLUSTRATIVE PURPOSES.



### FRONT VIEW

### SIDE VIEW

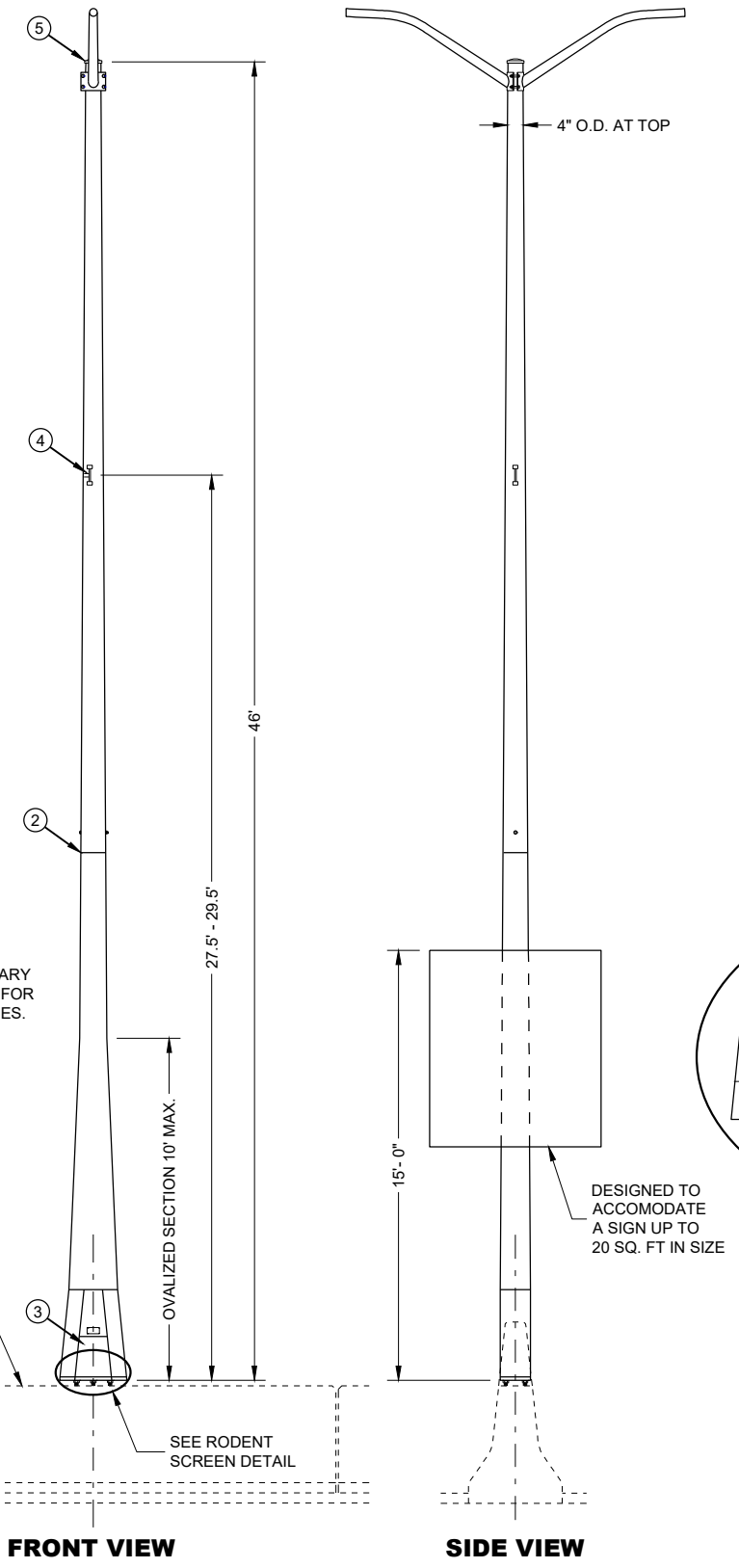


### BOTTOM VIEW

### POLE, TYPE F

50' NOMINAL HEIGHT POLE BASE DESIGNS VARY THIS VERSION SHOWN FOR ILLUSTRATIVE PURPOSES.

TOP OF SINGLE MEDIAN BARRIER. SEE STRUCTURAL DETAIL S56/S56A



### FRONT VIEW

### SIDE VIEW

### GENERAL NOTES

DETAILS OF CONSTRUCTION, MATERIALS, AND WORKMANSHIP NOT SHOWN ON THIS DRAWING SHALL CONFORM TO THE PERTINENT REQUIREMENTS OF THE STANDARD SPECIFICATIONS AND THE APPLICABLE SPECIAL PROVISIONS.

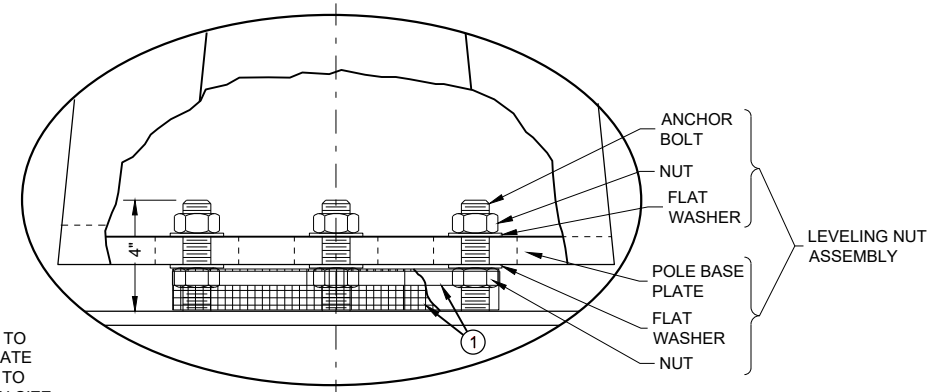
ALL THREADED FASTENER COMPONENTS SHALL BE STAINLESS STEEL. NUTS SHALL BE HEX NUTS. BOLTS SHALL BE HEX HEAD. ALL THREADED SURFACES SHALL BE COATED WITH ANTI-SEIZE COMPOUND PRIOR TO INSTALLATION.

COLLAR-MOUNT LUMINAIRE ARMS AND CLAMP ASSEMBLIES, MEDIAN BARRIER, AND ANCHOR BOLT ASSEMBLIES SHOWN FOR INFORMATION ONLY (PAID SEPARATELY).

POLES SHALL BE MOUNTED WITH ANCHOR BOLT ASSEMBLIES. ANCHOR BOLT ASSEMBLIES AND LEVELING PLATES ARE INCIDENTAL TO CONCRETE BASE OR STRUCTURE ANCHORAGE ITEM. THE REQUIRED RODENT SCREEN SHALL BE INCIDENTAL TO THE INSTALLATION OF THE POLE.

LUMINAIRE LOADING FOR DESIGN CALCULATIONS SHALL BE 50-LB., 1.5 SQ. FT. EPA.

- ① GALVANIZED STEEL MESH (RODENT SCREEN) AND 3/4" STAINLESS STEEL BANDING.
- ② OPTIONAL TELESCOPING FIELD JOINT SECURED BY A 5/8"-11 UNC THROUGH BOLT OR STUD. THE OVERLAP OF THE UPPER AND LOWER SECTIONS SHALL BE NOT LESS THAN 12".
- ③ HATCH COVER, SECURED BY 1/4"-20 UNC HEX HEAD BOLT. THE POLE SHALL BE INSTALLED SUCH THAT THE HATCH IS ON THE RIGHT SIDE OF THE BARRIER UNLESS OTHERWISE SHOWN IN THE PLANS.
- ④ INTERNAL DUMBBELL-TYPE VIBRATION DAMPER. MOUNT AT ELEVATION 27.5' TO 29.5' ±.
- ⑤ VENTILATED POLE CAP. SECURE WITH ONE OR MORE 1/4"-20 UNC SET SCREW BOLTS.
- ⑥ HOLE (FACTORY DRILLED PRIOR TO GALVANIZING, 2 EACH) AND 1" CHASE NIPPLE AND NUT (OR NEOPRENE GROMMET), PER EACH REQUIRED LUMINAIRE ARM.
- ⑦ FACTORY-WELDED "J" HOOK FOR POLE WIRE STRAIN RELIEF.
- ⑧ FACTORY-WELDED BRACKET FOR GROUNDING LUG, OPPOSITE HANDHOLE. (LUG AND HARDWARE PAID UNDER SEPARATE ITEMS; SHOWN FOR INFORMATION ONLY). PROVIDE HOLE IN BRACKET FOR 1/4" X 3/4" - 20 TPI STAINLESS STEEL HEX HEAD BOLTS.
- ⑨ MANUFACTURER'S PLATE SHOWING WISDOT POLE TYPE, MANUFACTURER, AND DATE.
- ⑩ HATCH COVER LOCKING CLIPS, BACKING STRAPS AND MOUNTING CLIPS VARY. SHOWN FOR ILLUSTRATIVE PURPOSES ONLY.



### RODENT SCREEN DETAIL

### POLE, TYPE F

STATE OF WISCONSIN  
DEPARTMENT OF TRANSPORTATION

APPROVED  
May 2022 /S/ Ahmet Demirelek  
DATE STATE ELECTRICAL ENGINEER

FHWA

SDD 10A17 - 05d

SDD 10A17 - 05d



Poles, Type F

References:

FDM15-5 Attachment 30.5 and 30.6 for conventional symbols.  
Standard Spec 657 Poles, Arms, Standards and Bases

Bid items associated with this drawing:

<u>ITEM NUMBER</u>	<u>DESCRIPTION</u>	<u>UNIT</u>
657.0381	Poles Type F.....	EACH
657.0609	Luminaire Arms Single Member 4-Inch Clamp (feet).....	EACH
657.0704	Luminaire Arms Truss Type 4-Inch Clamp (feet).....	EACH

Standardized Special Provisions associated with this drawing:

<u>STSP NUMBER</u>	<u>TITLE</u>
NONE	

Other SDDs associated with this drawing:

- [SDD 10A1](#) Electrical Handhole Wiring
- [SDD 10A5](#) Electrical Details Ground Mount Light Poles Isolated Neutral Systems
- [SDD 10A6](#) Electrical Details Ground Mount Poles Grounded Neutral Systems
- [SDD 10A7](#) Electrical Details Ground Mount Light Poles Isolated Neutral Systems
- [SDD 10A8](#) Electrical Details Structure Mount Light Poles Isolated Neutral Systems
- [SDD 10A9](#) Electrical Details Structure Mount Light Poles Grounded Neutral Systems
- [SDD 10A10](#) Electrical Details Structure Mount Light Poles Phase-to-Phase Systems
- [SDD 10A11](#) Electrical Details Median Mount Light Poles Isolated Neutral Systems
- [SDD 10A12](#) Electrical Details Median Mount Light Poles Grounded Neutral Systems
- [SDD 10A18](#) Luminaire Arms, Single Member 6-inch Clamp sheets "a" and "b"

Design Notes:

NONE

Contact Person:

Ahmet Demirbilek (414) 220-6801  
(414) 322-9606 (Mobile)